

**TKH
SECURITY**

**TKH Security
FD2024F IP
Fixed Dome
Camera**



TKH Security FD2024F IP Fixed Dome Camera User Guide

[Home](#) » [TKH SECURITY](#) » TKH Security FD2024F IP Fixed Dome Camera User Guide 

Contents

- [1 TKH Security FD2024F IP Fixed Dome Camera](#)
- [2 Product Usage Instructions](#)
- [3 Installation Notices](#)
- [4 Camera cabling](#)
- [5 Documents / Resources](#)
 - [5.1 References](#)
- [6 Related Posts](#)

**TKH
SECURITY**

TKH Security FD2024F IP Fixed Dome Camera



Specifications

- Resolution: 4MP
- Camera Type: IP Fixed Dome Camera
- Power Input: PoE / DC 12V
- Storage: SD Card
- Manufacturer: TKH Security B.V.

Product Usage Instructions

Unpacking and Installation

1. Unpack the camera and accessories.
2. Caution: Installation should be performed by qualified personnel following local procedures.
3. Ensure proper cabling for audio, alarm, PoE/network, and power connections.
4. Use only UL listed I.T.E. with PoE output for PoE connection.

Camera Operation

1. To tilt the camera, unscrew the TILT lock.
2. For pan adjustments, use the PAN controls.
3. To reset to factory defaults, press the Reset button while powering up for at least 10 seconds.

Accessing the Camera

1. Ensure DHCP is enabled on your network.
2. Access the camera with the provided IP address via a web browser.
3. Set a strong password for first-time camera login.

Storage Information

Avoid continuous recording on the micro SD card to prevent potential data read/write issues. Contact the micro SD card manufacturer for reliability and life expectancy details.

FAQ

- **Q: Can I replace the camera's batteries?**

- A: The camera contains batteries, but battery replacement is not recommended due to the risk of explosion. Dispose of used batteries according to instructions.

- **Q: Where can I find additional product resources?**

- A: Visit tkhsecurity.com for manuals, datasheets, firmware updates, and the EU Declaration of Conformity for this product.

Unpack

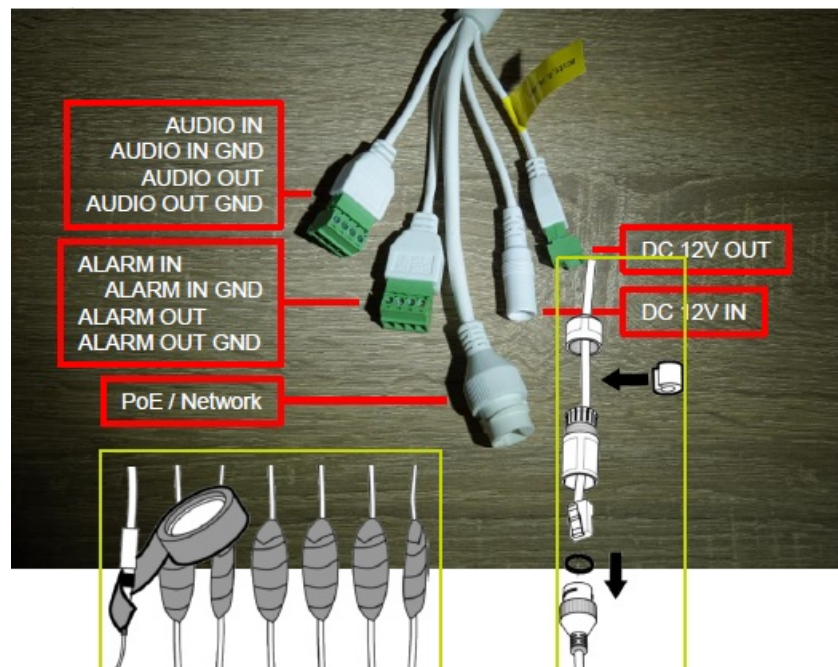


Subject to modification. Actual product and accessories may differ in appearance.

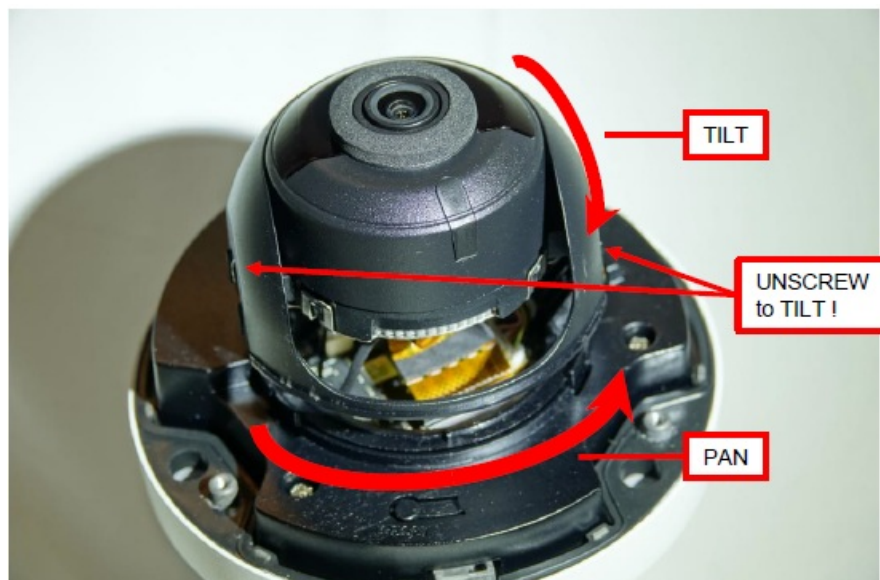
Installation Notices

- **Caution** installation shall be performed by qualified personnel only. Installation shall be in accordance with local procedures. The camera contains batteries.
- Battery replacement shall not be applied in view of the risk of explosion. Dispose of used batteries according to the instructions.
- For “PoE” input connection, use only with UL listed I.T.E. with “PoE” output. Description for the “PoE” is intended to be connected to not exposed (outside plant) networks or equivalent statement in installation instructions.

Camera cabling



Pan / Tilt

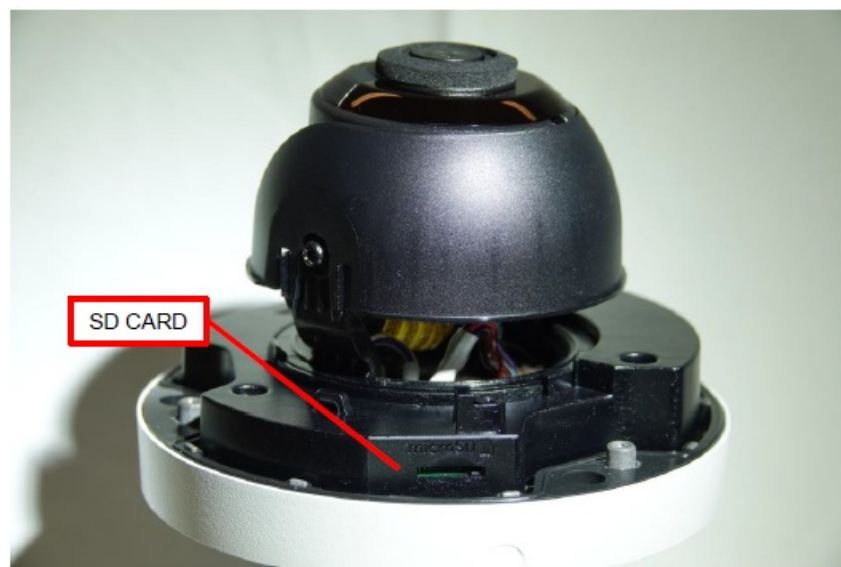


To restore camera to factory defaults, power up with Reset button pressed for at least 10s.

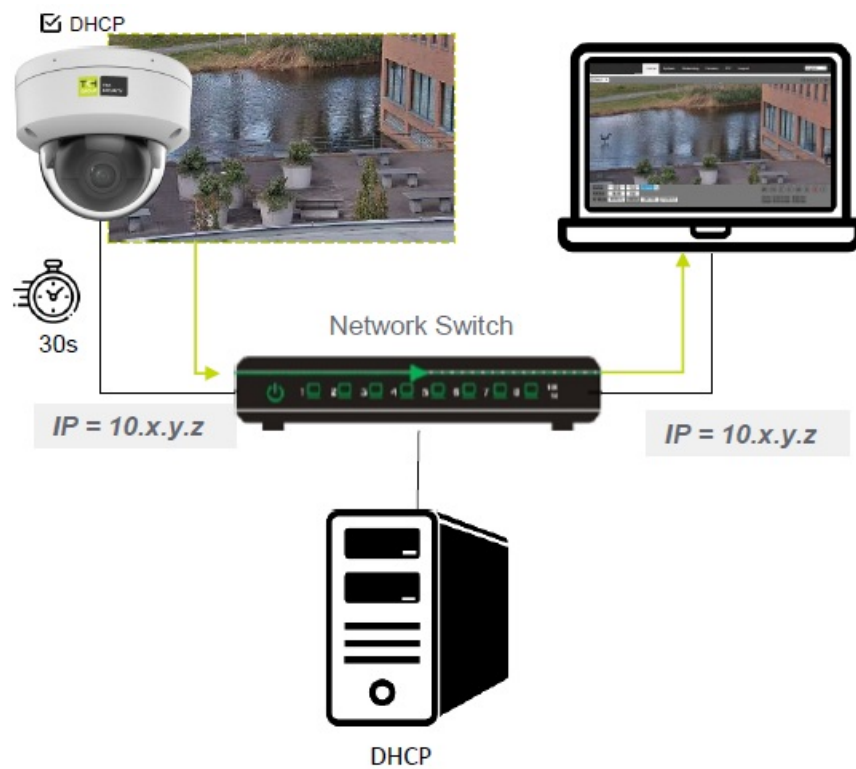
Reset button



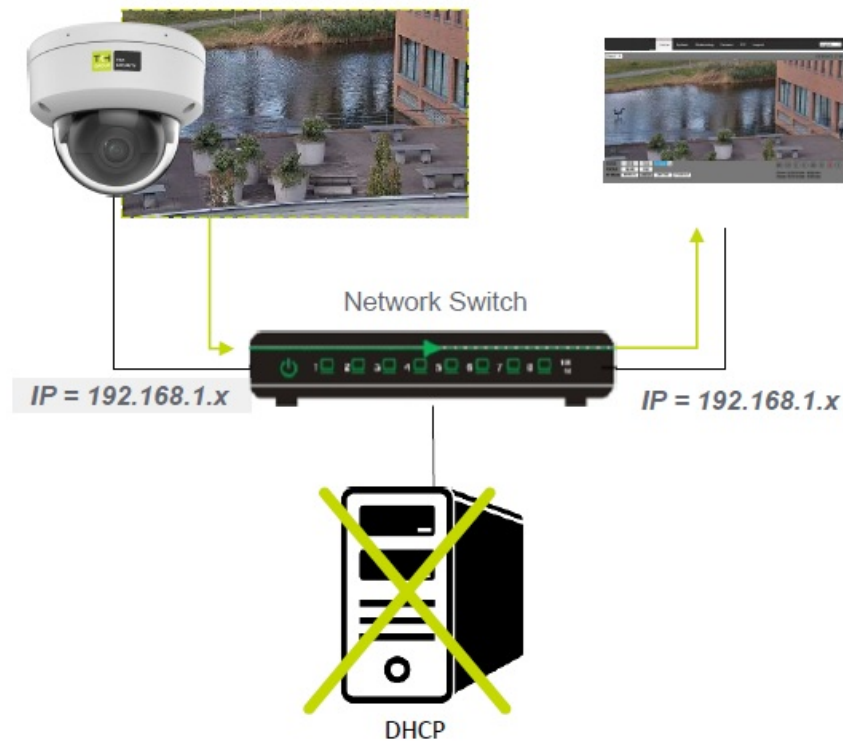
SD card



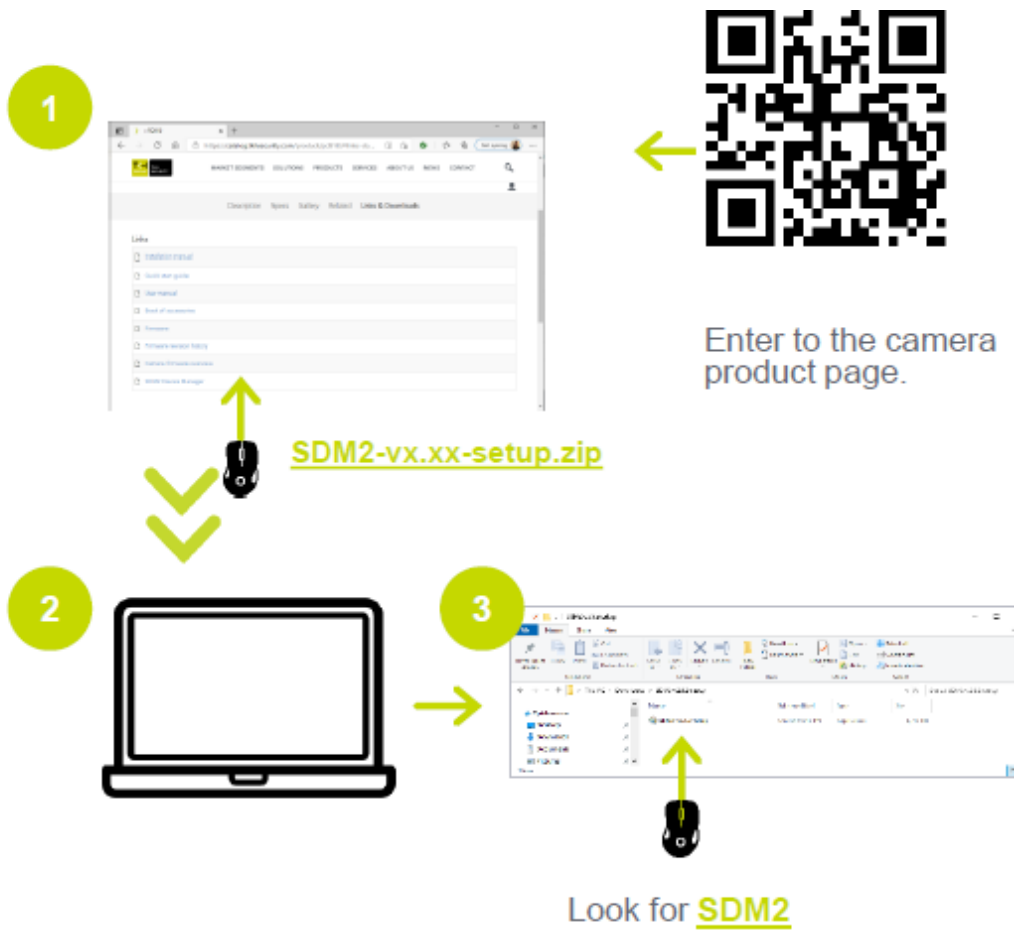
Accessing the camera – Fixed IP



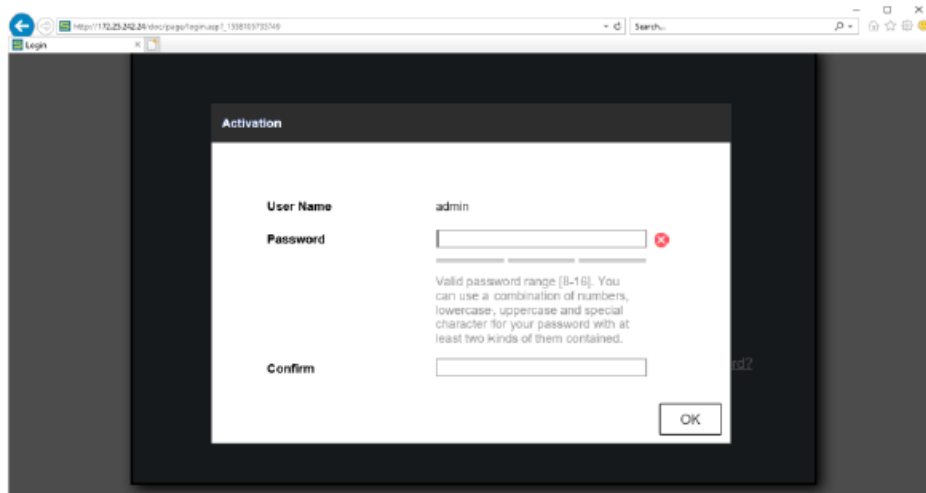
Accessing the camera – Fixed IP



Auto detect with SDM2



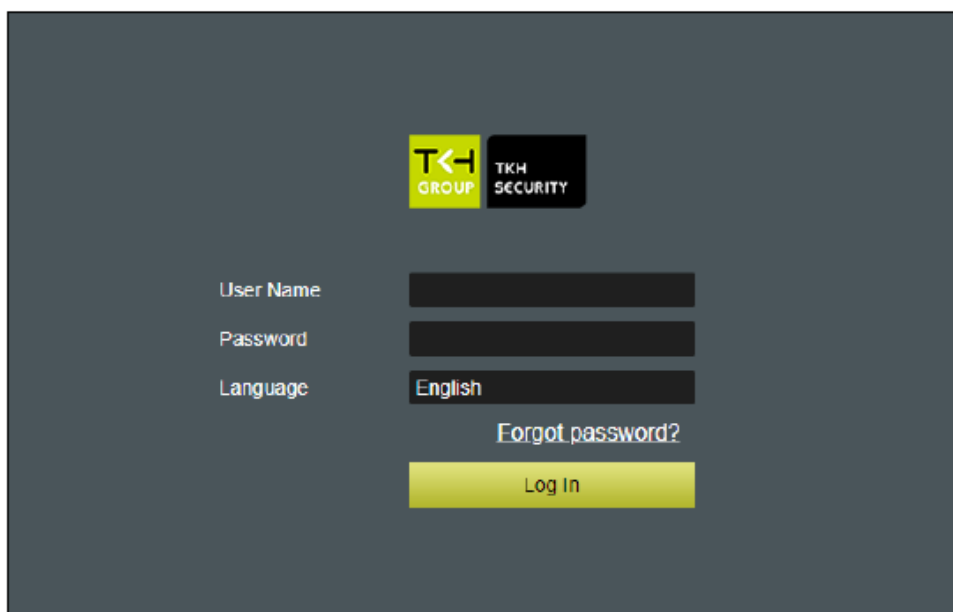
1st time camera login



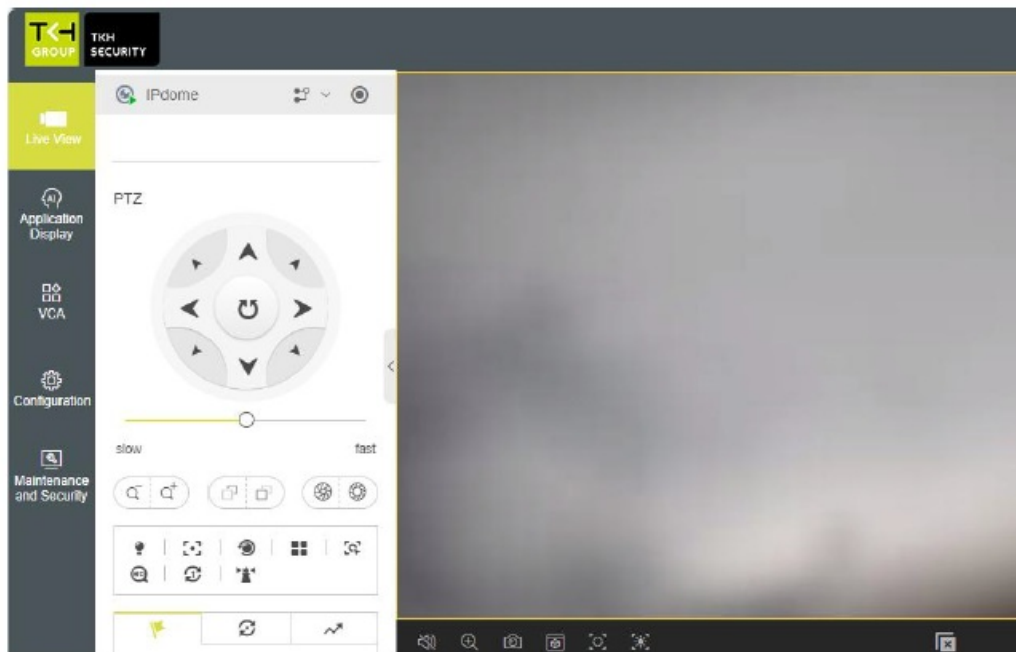
qwer1234 ❌

x6W@oM0a!9#F ✅

1st time camera login



Browser-based Viewer



It is not recommended to continuously (24/7) record with the micro SD card, as the card may not support long-term Continuous data read/write. Contact the manufacturer of the micro SD card for information regarding the reliability and the life expectancy.

Find additional manuals, the datasheet, the EU Declaration of Conformity, and the latest firmware for this product at: tkhsecurity.com



Manufacturer information:

- **Name:** TKH Security B.V.
- **Address :**Werner von Siemensstraat 7, 2712PN, Netherlands
- **Email:** info.nl@tkhsecurity.com

Documents / Resources

	<p>TKH Security FD2024F IP Fixed Dome Camera [pdf] User Guide FD2024F IP Fixed Dome Camera, FD2024F, IP Fixed Dome Camera, Fixed Dome Camera, Do me Camera, Camera</p>
--	--

References

- [> TKH Security - Home – TKH Security](#)
- [User Manual](#)

Manuals+. Privacy Policy

This website is an independent publication and is neither affiliated with nor endorsed by any of the trademark owners. The "Bluetooth®" word mark and logos are registered trademarks owned by Bluetooth SIG, Inc. The "Wi-Fi®" word mark and logos are registered trademarks owned by the Wi-Fi Alliance. Any use of these marks on this website does not imply any affiliation with or endorsement.