



# TKH SECURITY FD2002v2M 2MP Vandal Fixed Dome Camera User Guide

[Home](#) » [TKH SECURITY](#) » TKH SECURITY FD2002v2M 2MP Vandal Fixed Dome Camera User Guide 

## Contents

- [1 TKH SECURITY FD2002v2M 2MP Vandal Fixed Dome Camera](#)
- [2 Unpack](#)
- [3 Installation Notices](#)
- [4 Connectors](#)
- [5 Camera Cabling](#)
- [6 Waterproof Notice](#)
- [7 Accessing the Camera – DHCP](#)
- [8 Accessing the camera – Fixed IP](#)
- [9 Auto-detect with SDM2](#)
- [10 1st-time camera login](#)
- [11 1st time camera login](#)
- [12 Browser-based Viewer](#)
- [13 Documents / Resources](#)
- [14 Related Posts](#)



**TKH SECURITY FD2002v2M 2MP Vandal Fixed Dome Camera**



**FD2002v2M**  
**2MP Vandal Fixed Dome Camera Quick Start Guide**

**Unpack**

Subject to modification. Actual products and accessories may differ in appearance.



Camera Unit



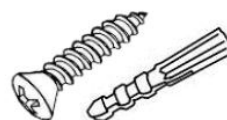
Mounting Plate



Duster



CAT-6 RJ45 conduit  
 & Pin pusher



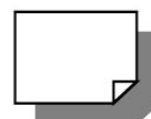
Screws(4x) &  
 Plastic Screw  
 Anchors (4x)



Conduit



Security Torx Quick Start Guide



## Installation Notices

### CAUTION

INSTALLATION SHALL BE PERFORMED BY QUALIFIED PERSONNEL ONLY. INSTALLATION SHALL BE IN ACCORDANCE WITH LOCAL PROCEDURES. THE CAMERA CONTAINS BATTERIES. DO NOT REPLACE IN RISK OF EXPLOSION. BATTERY REPLACEMENT SHALL NOT BE APPLIED IN VIEW OF THE RISK OF EXPLOSION. LE REMPLACEMENT DES PILES NE DOIT PAS ÊTRE APPLIQUÉ AU RISQUE D'EXPLOSION. DISPOSE OF USED BATTERIES ACCORDING TO THE INSTRUCTIONS. METTRE AU REBUT LES BATTERIES USAGÉES CONFORMÉMENT AUX INSTRUCTIONS.. FOR "PoE" INPUT CONNECTION, USE ONLY WITH UL LISTED I.T.E WITH "PoE" OUTPUT. DESCRIPTION FOR THE "PoE" IS INTENDED TO BE CONNECTED TO NOT EXPOSED (OUTSIDE PLANT) NETWORKS OR EQUIVALENT STATEMENT IN INSTALLATION INSTRUCTIONS. POUR LA CONNEXION D'ENTRÉE "PoE", UTILISER UNIQUEMENT AVEC UN I.T.E. LISTE AVEC UNE SORTIE "PoE". LA DESCRIPTION DE "POE" EST CONÇUE POUR ÊTRE CONNECTÉE À DES RÉSEAUX OR NON ÉNONCÉS (INSTALLATIONS EXTÉRIEURES), DANS LES INSTRUCTIONS D'INSTALLATION DE L'INSTALLATION.

### Connectors

### CAUTION

RESET BUTTON TAKES 10 SECONDS TO BE EFFECTIVE. IT WILL RESTORE FACTORY DEFAULT SETTINGS, INCLUDING IP ADDRESS, USERNAME, AND PASSWORD.

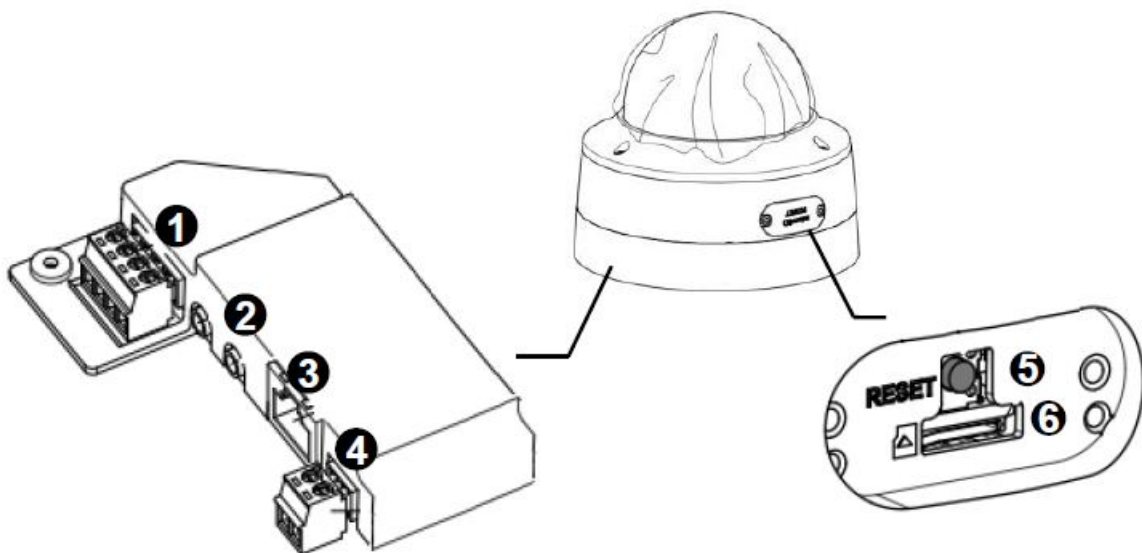


Figure 1 Camera Connectors

### Connector Definition

No.	Connector	Definition
1	Alarm I/O	Alarm I/O connection
2	Audio I/O	Line In and Line Out connection
3	RJ-45 Port (Contact Siquira for a compatible PoE injector.)	For network and PoE connections
4	Power(DC 12V)	Power Connection
5	Reset Button	Press the button with a proper tool for at least 20 seconds to restore the system.
6	Micro SD Card Slot	Insert the SD card into the card slot to store videos and snapshots. Do not remove the SD card when the camera is powered on.

## Camera Cabling

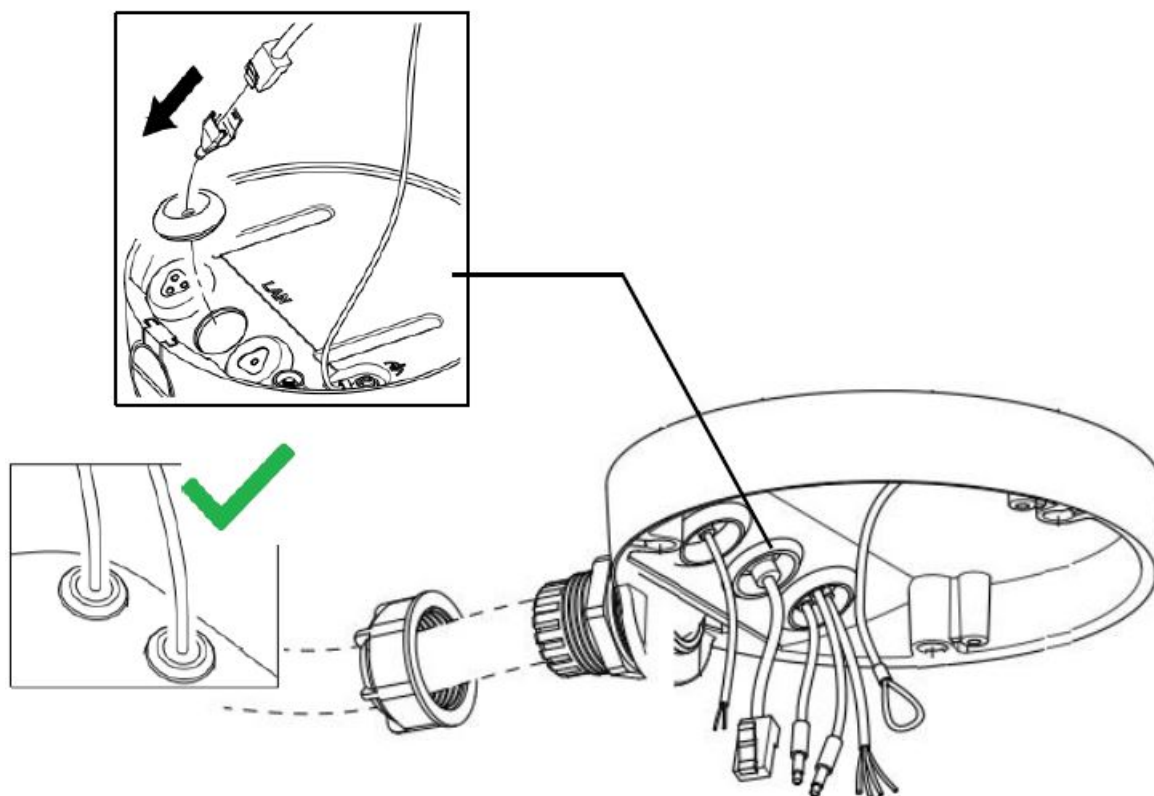
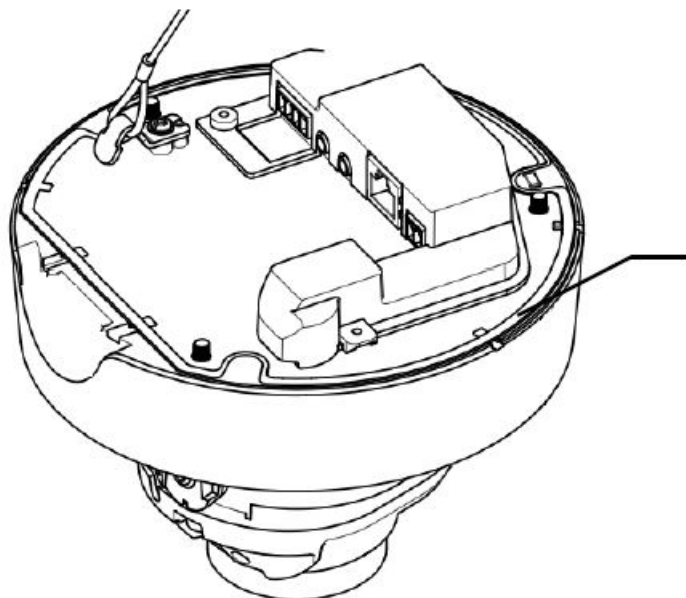


Figure 2 Cabling

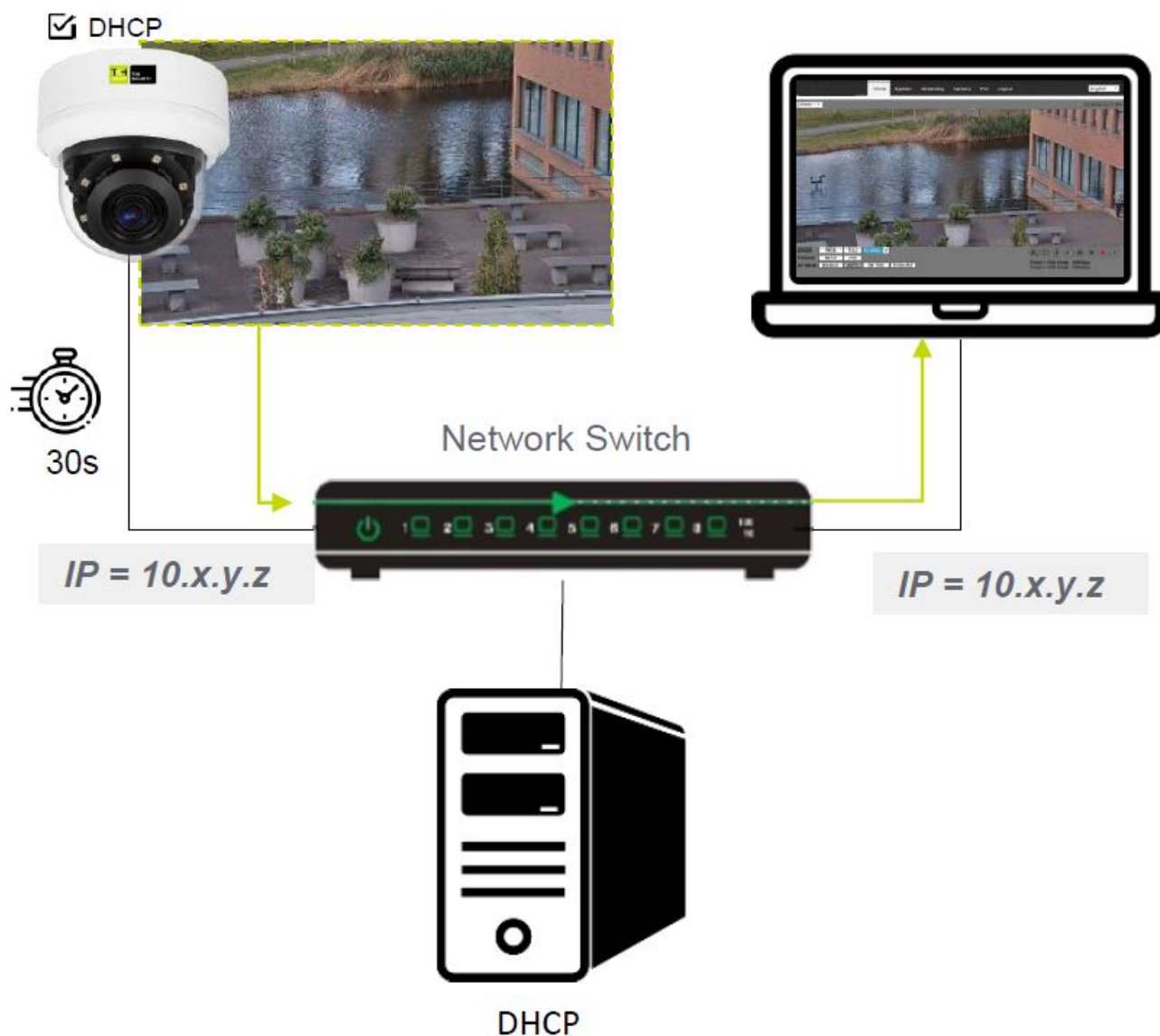
## Waterproof Notice



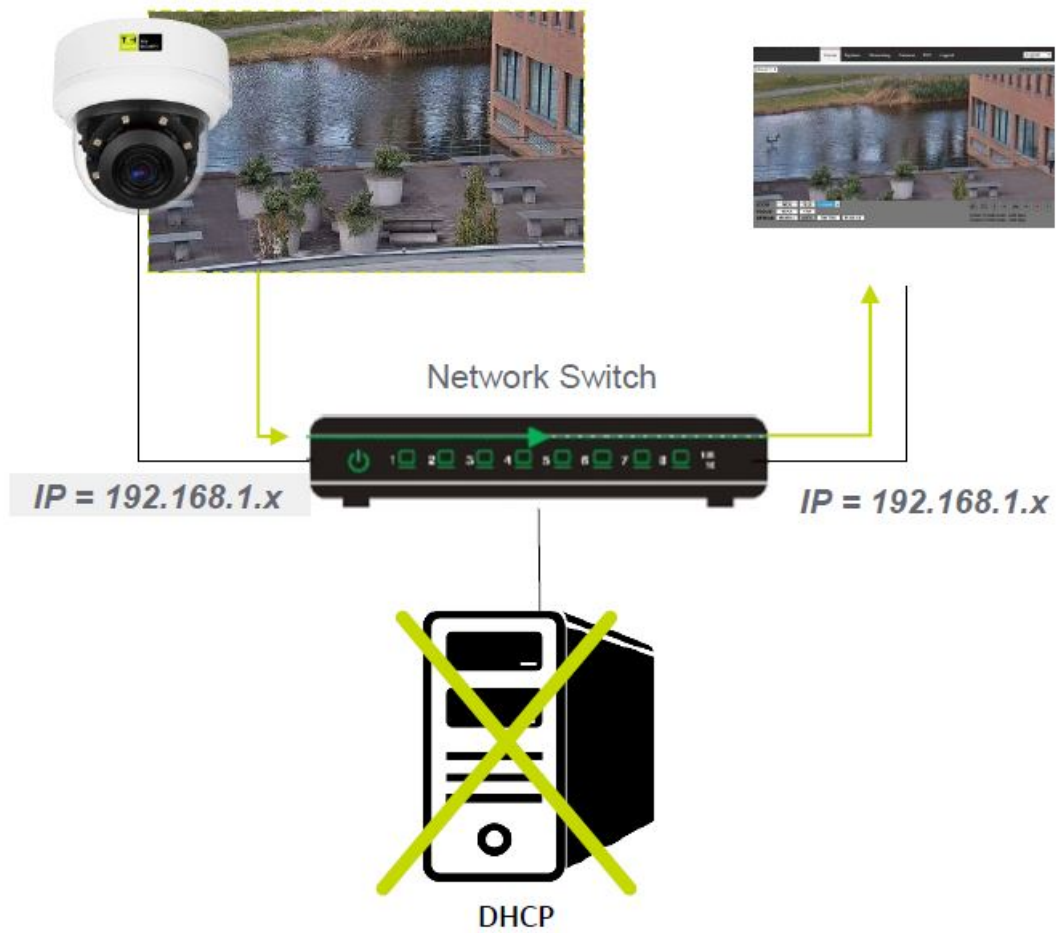
Please make sure the rubber is properly aligned during installation.

Figure 3 Rubber

### Accessing the Camera – DHCP

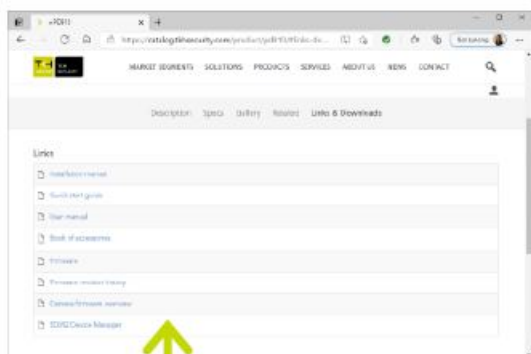


## Accessing the camera – Fixed IP



## Auto-detect with SDM2

1



[Tkhsecurity.com](https://tkhsecurity.com)

Enter to the camera  
product page, Link &  
Download section

[SDM2-vx.xx-setup.zip](#)

2



3



Look for [SDM2](#)

1st-time camera login

qwer1234



x6W@oM0a!9#F



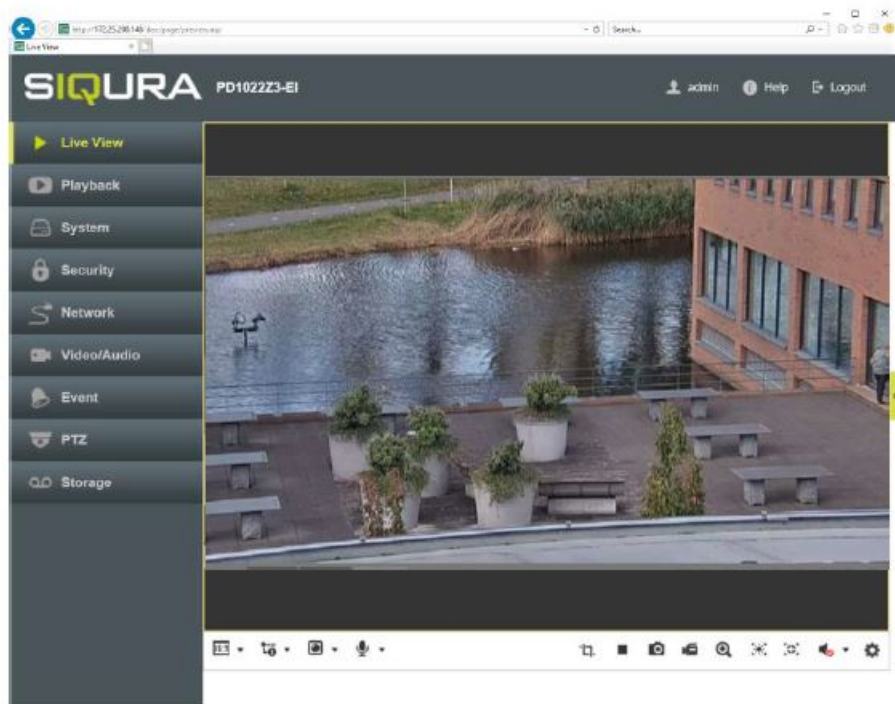
## 1st time camera login



## Browser-based Viewer

### CAUTION

IT IS NOT RECOMMENDED TO CONTINUOUSLY (24/7) RECORD WITH THE MICRO SD CARD, AS THE CAMERA MAY NOT SUPPORT LONG-TERM CONTINUOUS DATA READ/WRITE. CONTACT THE MANUFACTURER OF THE MICRO SD CARD FOR INFORMATION REGARDING THE RELIABILITY AND THE LIFE EXPECTANCY.



## Documents / Resources



[TKH SECURITY FD2002v2M 2MP Vandal Fixed Dome Camera](#) [pdf] User Guide  
FD2002v2M, 2MP Vandal Fixed Dome Camera

[Manuals+](#)