



TKH SECURITY BL2026M 6MP IP Bullet Camera User Guide

[Home](#) » [TKH SECURITY](#) » TKH SECURITY BL2026M 6MP IP Bullet Camera User Guide 

TKH SECURITY BL2026M 6MP IP Bullet Camera



Contents

- 1 Unpack
- 2 Connector Definition
- 3 Installation Notices
- 4 Camera Cabling
- 5 Connectors
- 6 Waterproof Notice
- 7 Accessing the Camera – DHCP
- 8 1st time camera login
- 9 Accessing the camera – Fixed IP
- 10 1st time camera login
- 11 Auto detect with SDM2
- 12 Browser-based Viewer
- 13 Customer Support
- 14 Documents / Resources
 - 14.1 References
- 15 Related Posts

Unpack

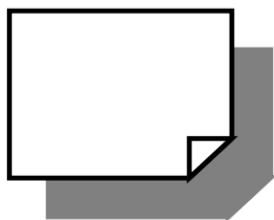
- Camera Unit



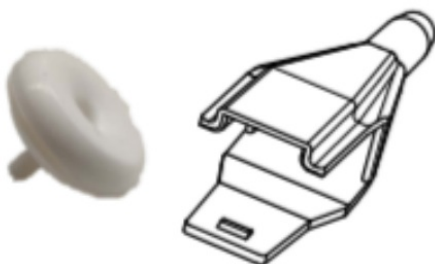
- Mounting Adapter



- Quick Start Guide



- CAT-6 RJ45 conduit & Pin pusher



- Screws(4x) & Plastic Screw Anchors (4x)



- Security Torx




Subject to modification. Actual product and accessories may differ in appearance.

Connector Definition

Table 1 Connector definition

No.	Connector	Definition
1	Alarm I/O	Alarm I/O connection
2	Audio I/O	Line In and Line Out connection
3	RJ-45 Port	For network and PoE connections. Please contact Siqua for a compatible PoE injector.
4	Power(DC 12V)	Power Connection
5	Micro SD Card Slot	Insert the SD card into the card slot to store videos and snapshots. Do not remove the SD card when the camera is powered on.
6	Reset Button	To restore camera to factory defaults, power up with Reset button pressed for at least 10s.

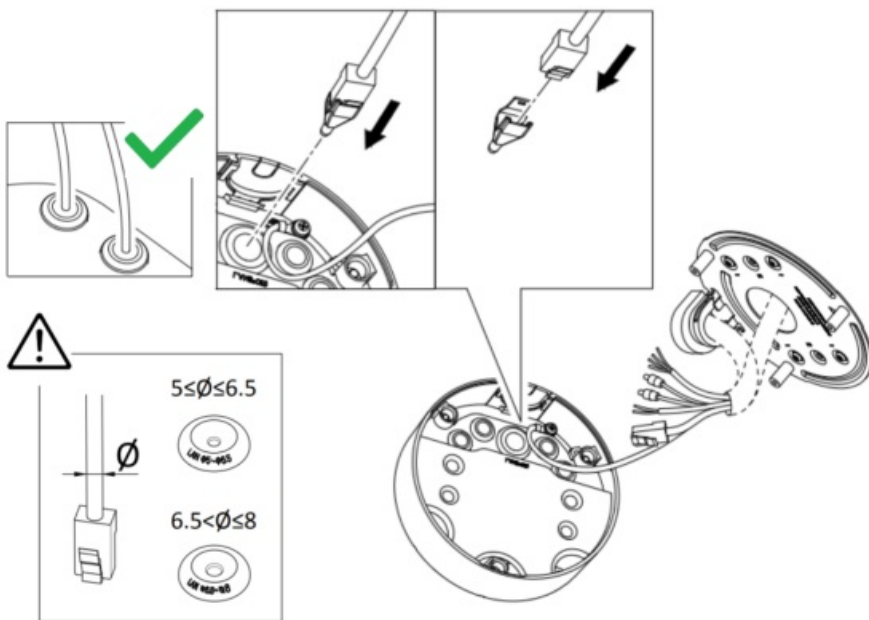
Installation Notices

 Caution installation shall be performed by qualified personnel only. Installation shall be in accordance with local procedures. The camera contains batteries. Battery replacement shall not be applied in view of the risk of explosion. Dispose of used batteries according to the instructions.

For “PoE” input connection, use only with UL listed I.T.E. with “PoE” output. Description for the “PoE” is intended to be connected to not exposed (outside plant) networks or equivalent statement in installation instructions.

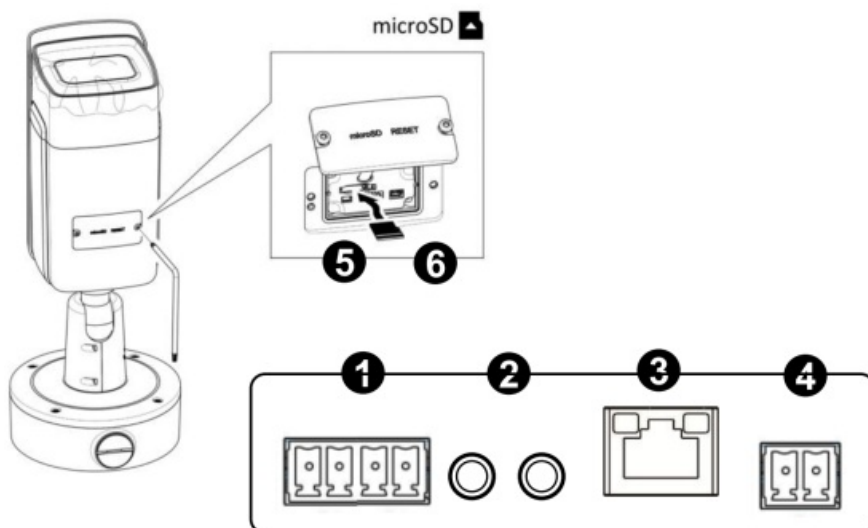
Camera Cabling

- **Figure 2 Cabling**



Connectors

• Figure 1 Camera Connectors



Waterproof Notice

Bullet camera is suggested to be mounted either by wall/pole mount or ceiling mount. Other mounting may cause potential water leakage at camera, which is not covered in warranty.

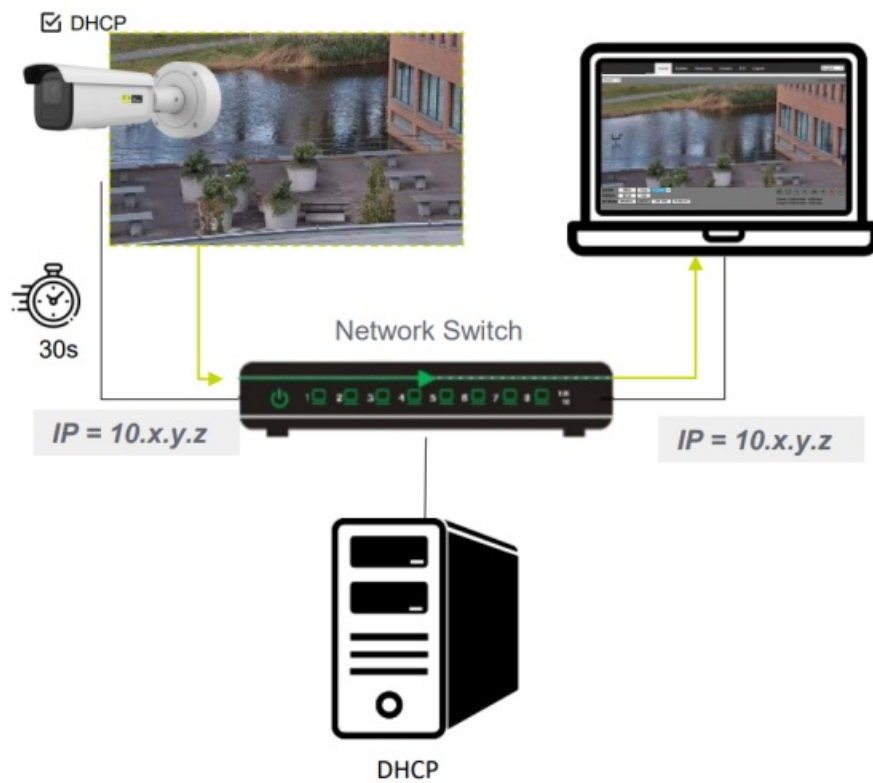
• Figure 3 Wall/Pole Mount



- **Figure 4 Ceiling Mount**



Accessing the Camera – DHCP



1st time camera login

Set a strong password

The screenshot shows the camera's activation page. The 'User Name' field is filled with 'admin'. The 'Password' field is empty, with a red 'X' icon next to it. The 'Confirm' field is also empty. Below the fields, there is a note: 'Valid password range [8-16]. You can use a combination of numbers, lowercase, uppercase and special character for your password with at least two kinds of them contained.' An 'OK' button is at the bottom right.

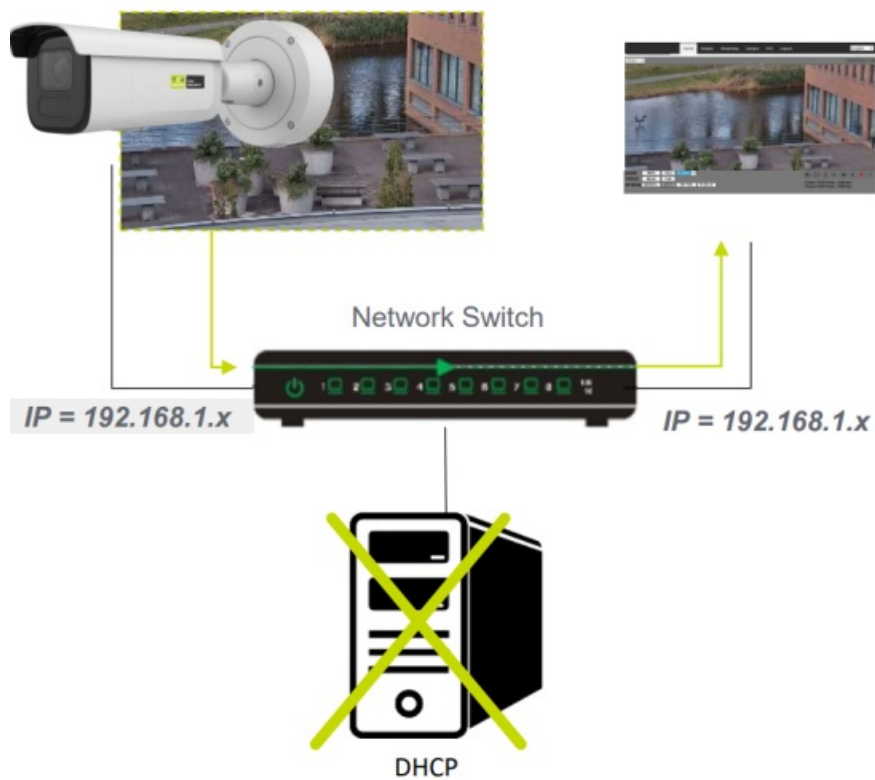
qwer1234



x6W@oM0a!9#F



Accessing the camera – Fixed IP



1st time camera login

TIKH GROUP TIKH SECURITY

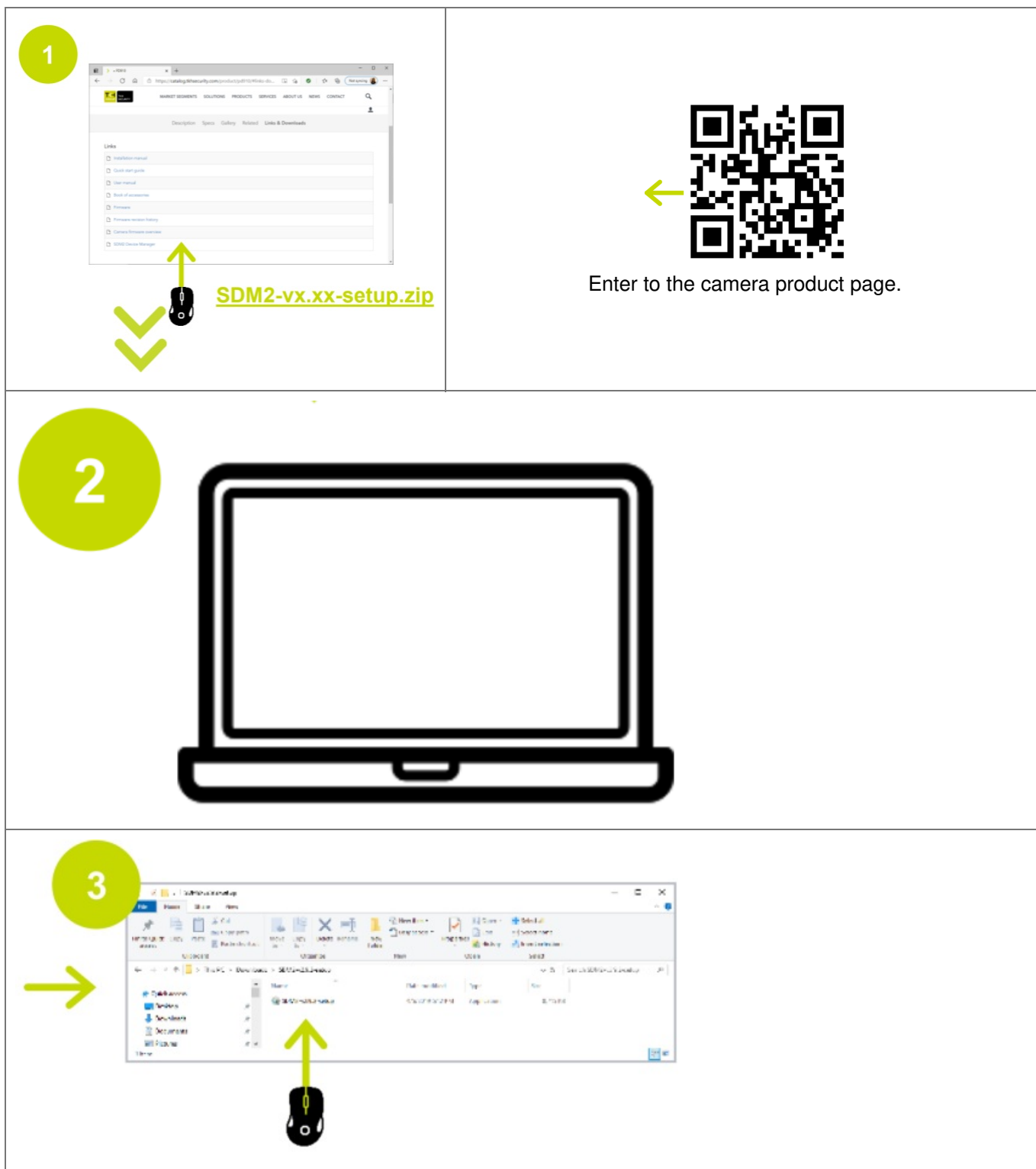
User Name

Password

Language

[Forgot password?](#)

Auto detect with SDM2



Browser-based Viewer

! It is not recommended to continuously (24/7) record with the micro-SD card, as the camera may not support long-term continuous data read/write. Contact the manufacturer of the micro-SD card for information regarding the reliability and the life expectancy.

Customer Support

i Find additional manuals, the datasheet, the EU Declaration of Conformity, and the latest firmware for this product at: tkhsecurity.com



Manufacturer information:

Name: TKH Security B.V.

Address: Werner von Siemensstraat 7, 2712PN, Netherlands

Email: info.nl@tkhsecurity.com



© TKH Security B.V. 2024 | Version 2 (20241209) | BL2026M-QS-EN

Documents / Resources



[TKH SECURITY BL2026M 6MP IP Bullet Camera](#) [pdf] User Guide

BL2026M 6MP IP Bullet Camera, BL2026M, 6MP IP Bullet Camera, Bullet Camera, Camera

References

- [> TKH Security - Home](#)
- [User Manual](#)

[Manuals+](#), [Privacy Policy](#)

This website is an independent publication and is neither affiliated with nor endorsed by any of the trademark owners. The "Bluetooth®" word mark and logos are registered trademarks owned by Bluetooth SIG, Inc. The "Wi-Fi®" word mark and logos are registered trademarks owned by the Wi-Fi Alliance. Any use of these marks on this website does not imply any affiliation with or endorsement.