



TITANIUM 58828 Unlimited 140 Professional Multiprocess Welder with 120V Input User Guide

[Home](#) » [TITANIUM](#) » TITANIUM 58828 Unlimited 140 Professional Multiprocess Welder with 120V Input User Guide

TITANIUM 58828 Unlimited 140 Professional Multiprocess Welder with 120V Input User Guide



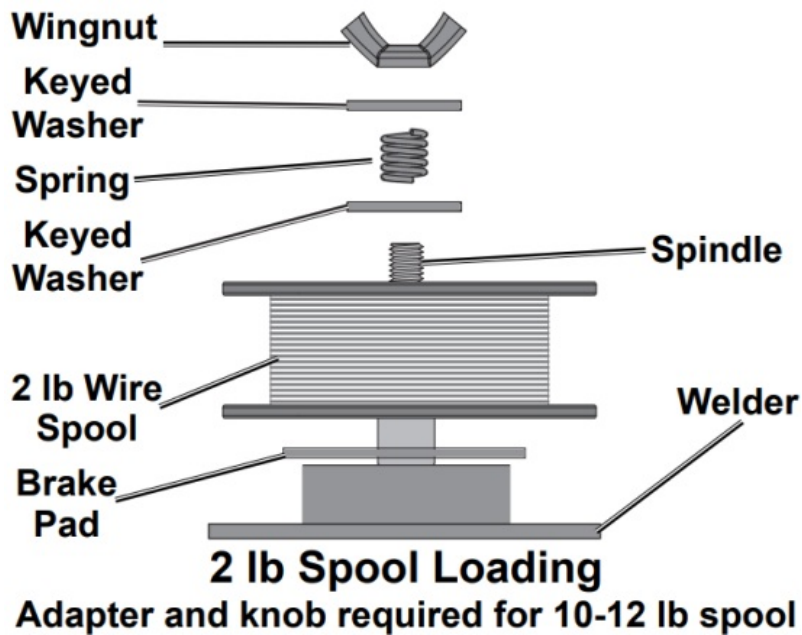
WARNING: To prevent serious injury, read manual warnings and instructions before use.

Contents [[hide](#)]

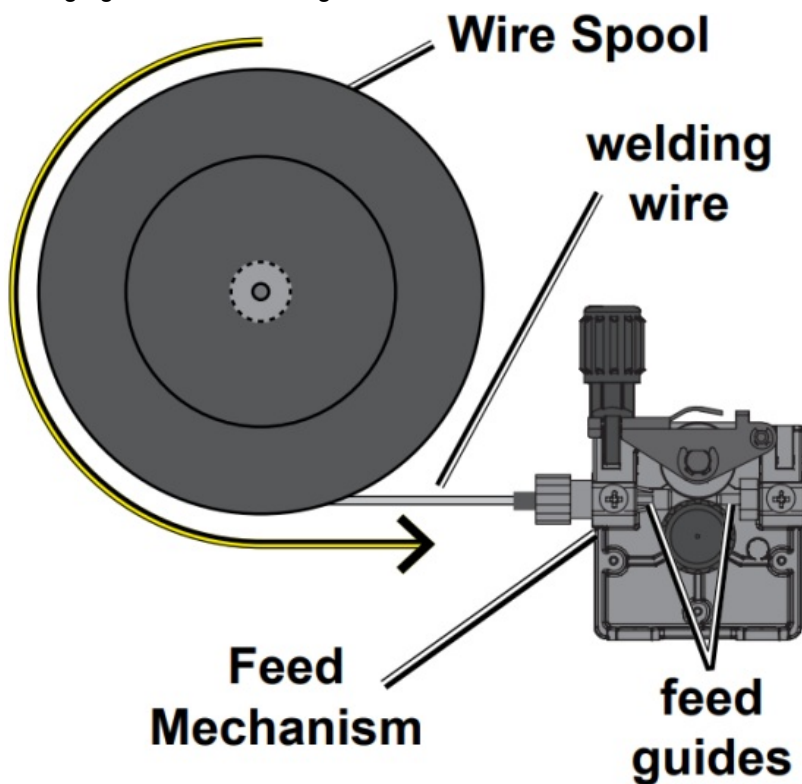
- [1 Installation Instructions](#)
- [2 STICK CABLE SETUP](#)
- [3 MIG CABLE SETUP](#)
- [4 FLUX CABLE SETUP](#)
- [5 TIG CABLE SETUP](#)
- [6 Documents / Resources](#)
- [7 Related Posts](#)

Installation Instructions

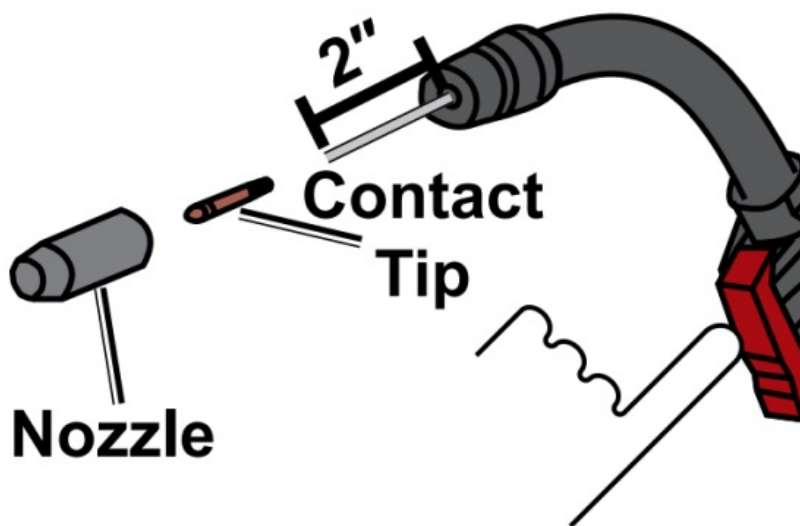
1. Connect cables as needed for flux I wire welding – see back of guide.



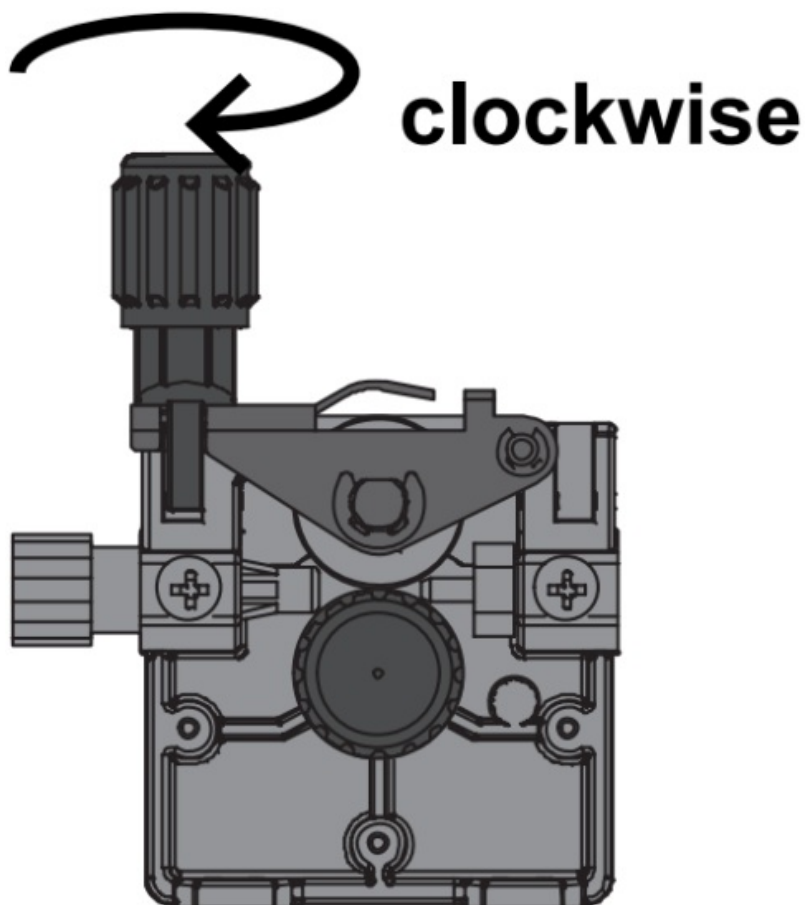
2. Install wire spool. Insert wire through both feed guides and clamp it into feed mechanism. See manual if changing wire size or using solid wire.

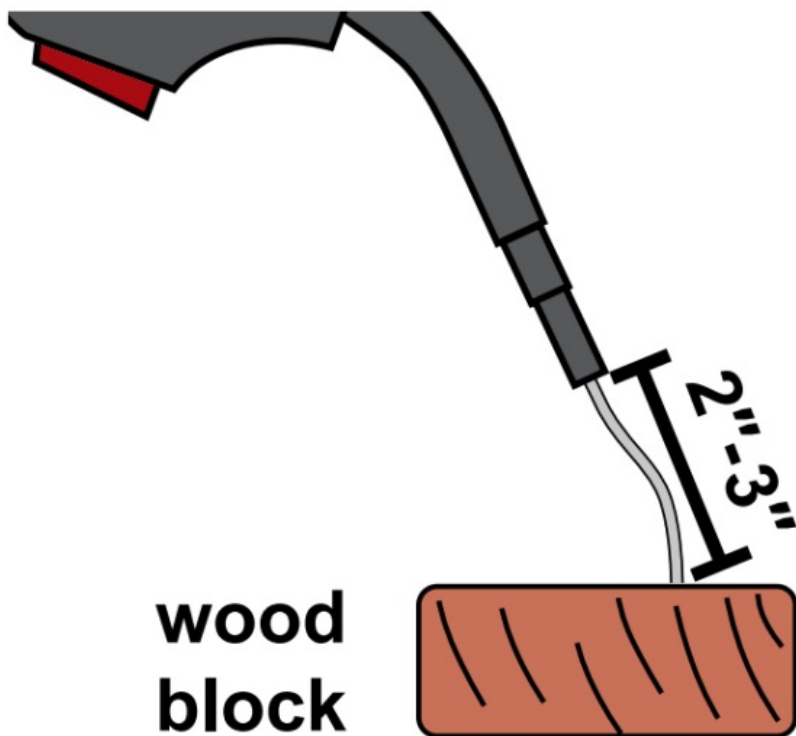


3. Take off nozzle and tip, plug welder in, turn it on, and press trigger until wire comes out.

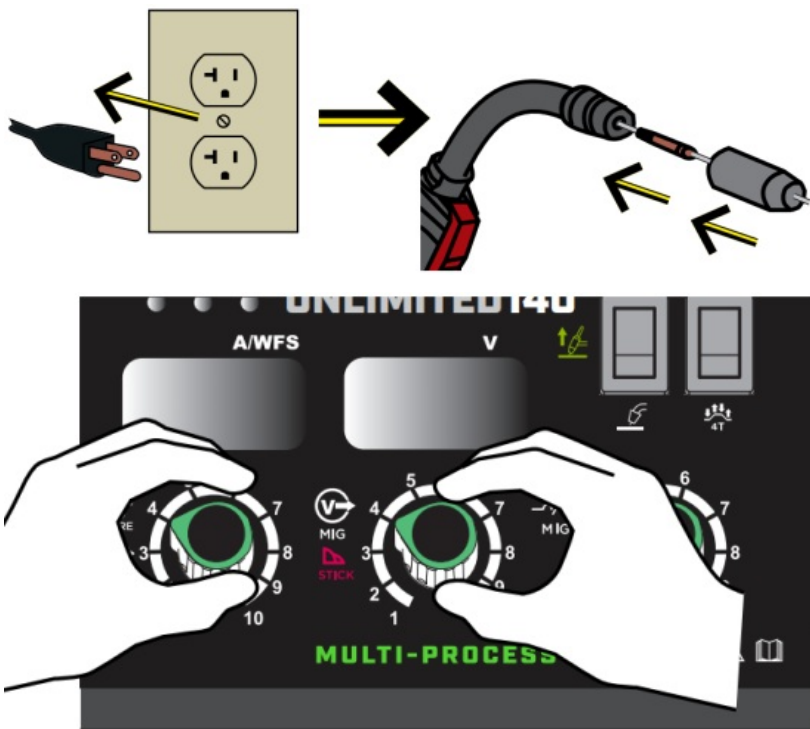


4. Incrementally tighten wire feed tension knob clockwise until wire will bend from feed tension at 2"-3".

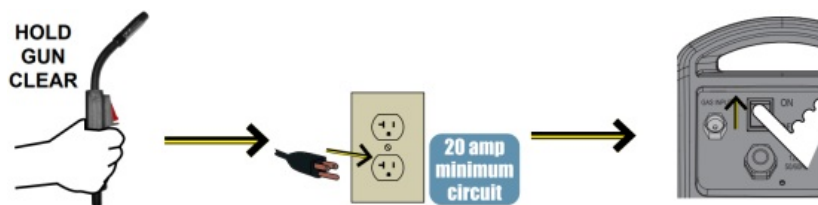




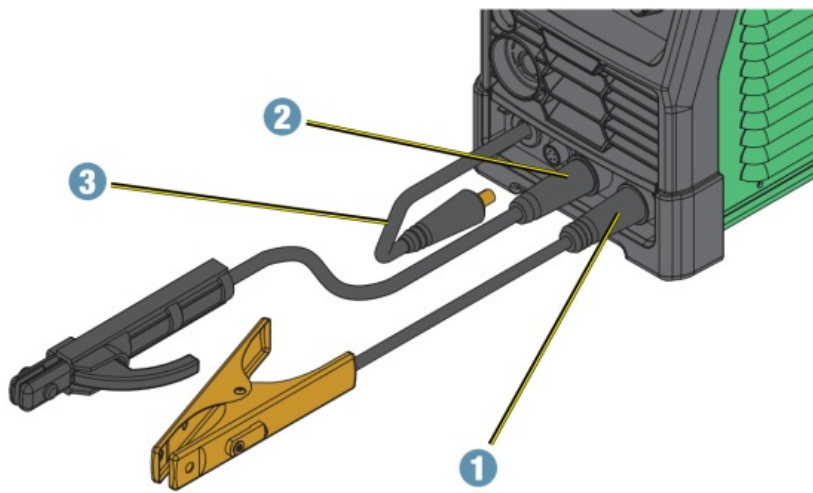
5. Unplug welder and replace nozzle and tip. Adjust welder settings according to chart.



6. Hold gun clear of workpiece, then plug in welder and turn it on.

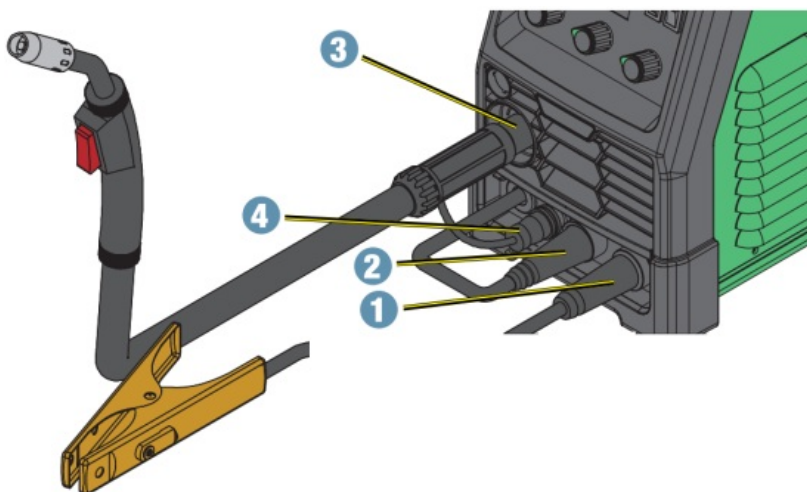


STICK CABLE SETUP



1. Connect ground clamp to negative terminal.
2. Connect electrode holder to positive terminal.
3. Leave wire feed power disconnected.

MIG CABLE SETUP

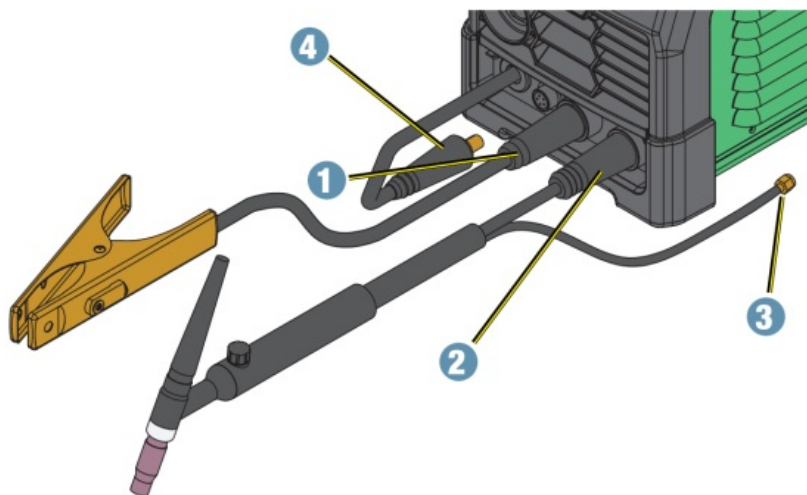


1. Connect ground clamp to negative terminal.
2. Connect wire feed power to positive terminal.
3. Connect MIG gun to wire feed.
4. Connect wire feed control.

FLUX CABLE SETUP

Follow MIG cable setup but connect ground clamp to positive terminal and wire feed power to negative terminal.

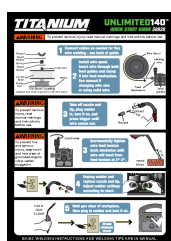
TIG CABLE SETUP



1. Connect ground clamp to positive terminal.
2. Connect TIG torch to negative terminal.
3. Connect gas line to gas regulator.
4. Leave wire feed power disconnected.



Documents / Resources



[TITANIUM 58828 Unlimited 140 Professional Multiprocess Welder with 120V Input](#) [pdf] User Guide

58828, Unlimited 140, Professional Multiprocess Welder with 120V Input, Unlimited 140 Professional Multiprocess Welder with 120V Input, 58828 Professional Multiprocess Welder with 120V Input, 58828 Unlimited 140 Professional Multiprocess Welder with 120V Input