

TISTAYA High Pressure Shower System



TISTAYA High Pressure Shower System Instruction Manual

[Home](#) » [TISTAYA](#) » TISTAYA High Pressure Shower System Instruction Manual 

Contents

- 1 TISTAYA High Pressure Shower System
- 2 Essential accessories list
- 3 Step 1: Install Shower Valve
- 4 Step 2: Test Valve and Piping
- 5 Step 3: Install Tub Spout
- 6 Step 4: Install Shower Arm and Shower Head
- 7 Warranty
- 8 Documents / Resources
 - 8.1 References

TISTAYA

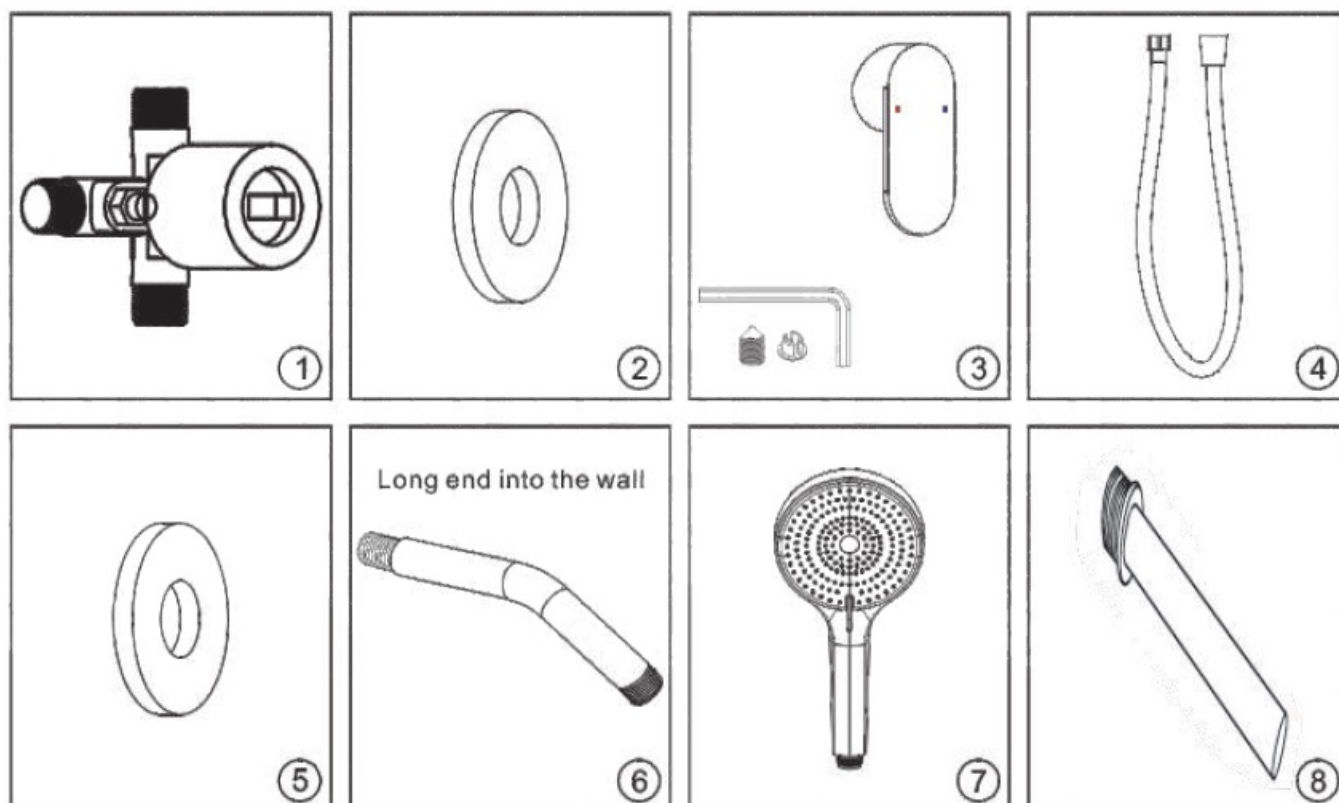
TISTAYA High Pressure Shower System

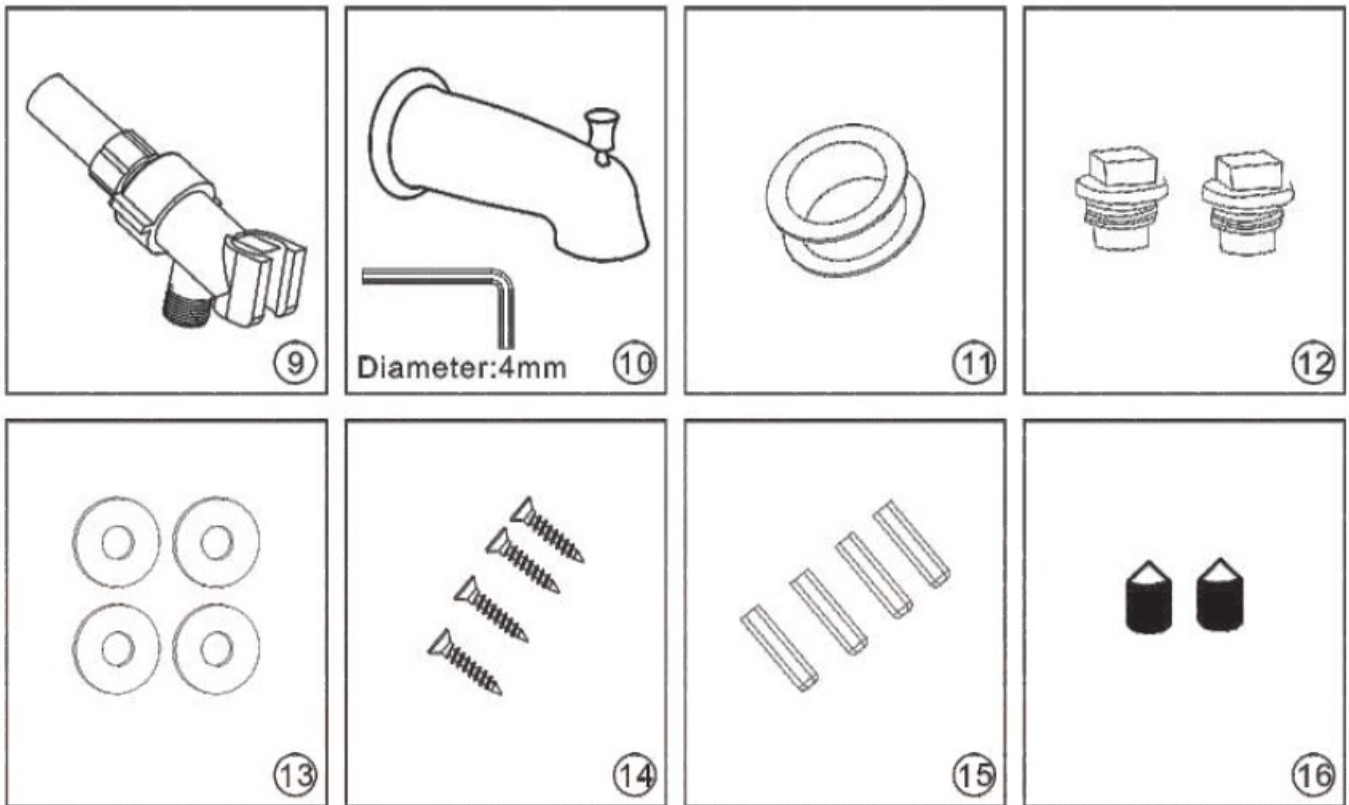


Installation Manual

Shower Faucet with Tub Spout

Essential accessories list



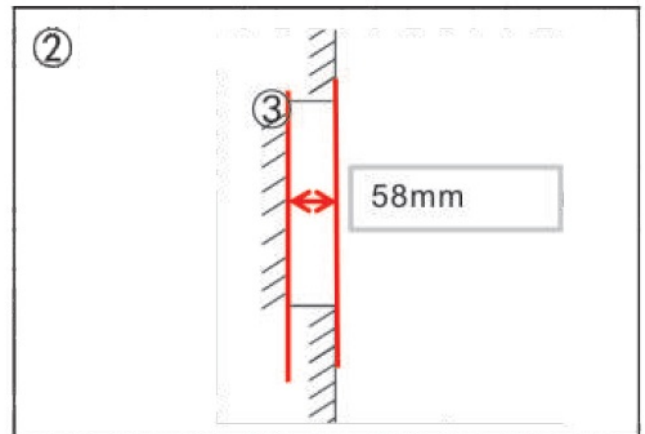
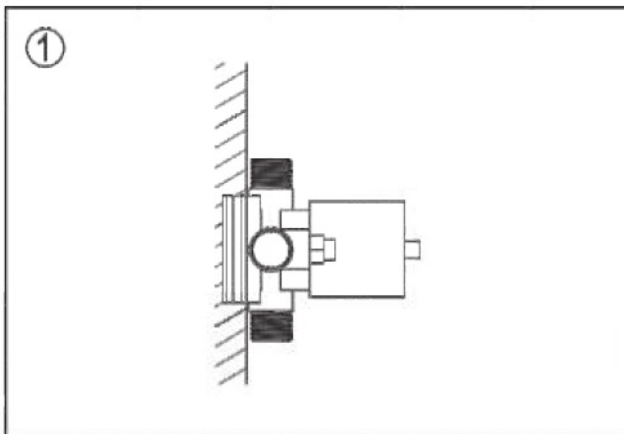


WARNING:

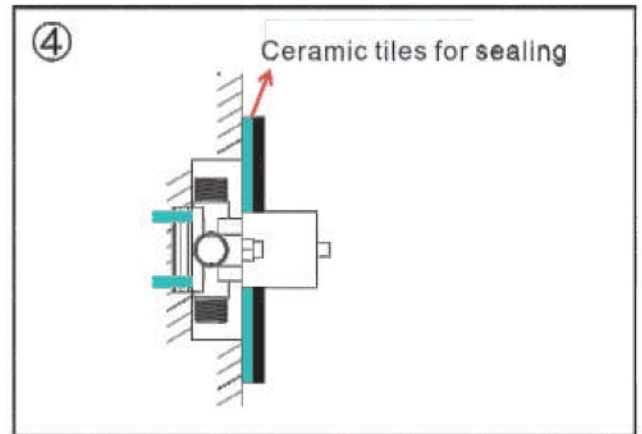
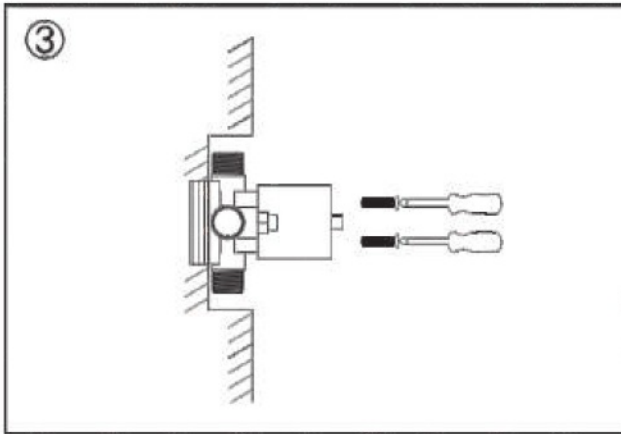
Choking hazards. Keep all small parts and plastic bags out of the reach of children and pets.

Step 1: Install Shower Valve

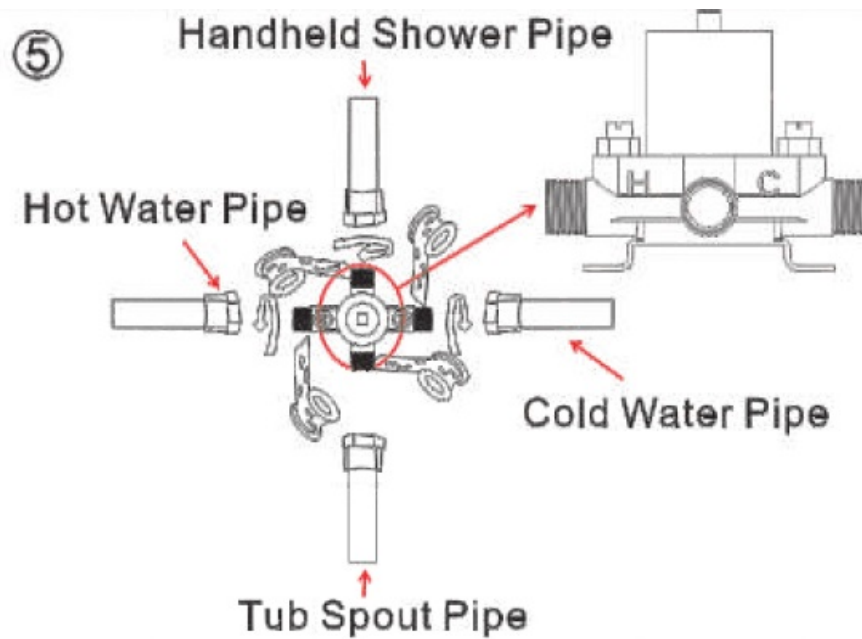
1. First, please find the appropriate fixed position of the valve, then draw the outline of the slot along the circumference of the valve with a marker.
2. Slot: range of depth is 58mm



3. Fixed valve: punch 4 holes (diameter size $<1>8$), install expansion screws and fixed the valve.
4. Tile sealing: holes diameter are $<1>90\text{mm}-<1>95\text{mm}$.

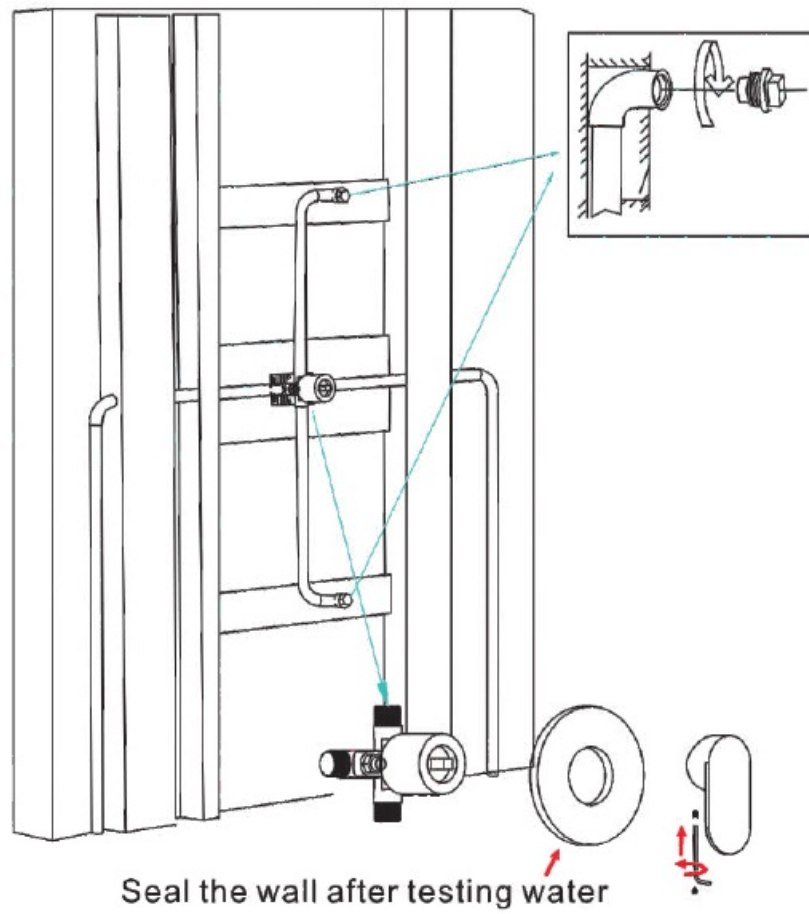


5. The Hand of the valve is connected to the hot water pipe, the C end is connected to the cold water pipe, the upper end is connected to the handheld shower pipe, and the lower end is connected to the tub spout pipe.

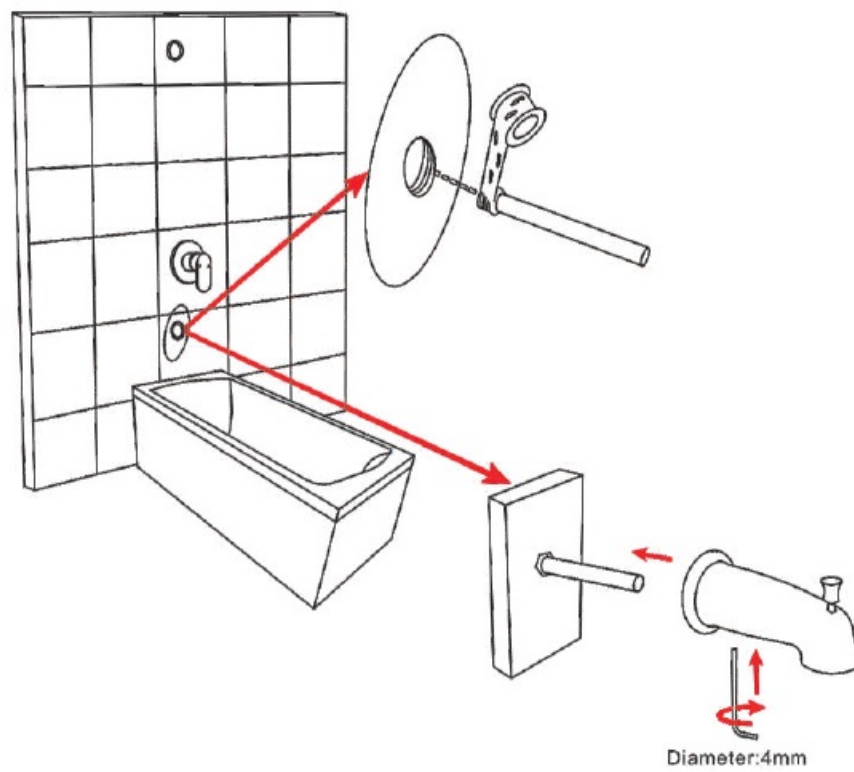


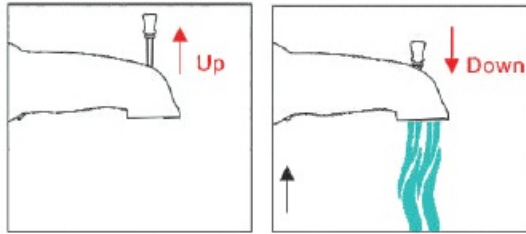
Step 2: Test Valve and Piping

- Test whether the shower valve is working properly before sealing the wall and check if there is any water leakage at the joint.
- Plug these two joints, running the shower system about 24 hours, and check for leaks.



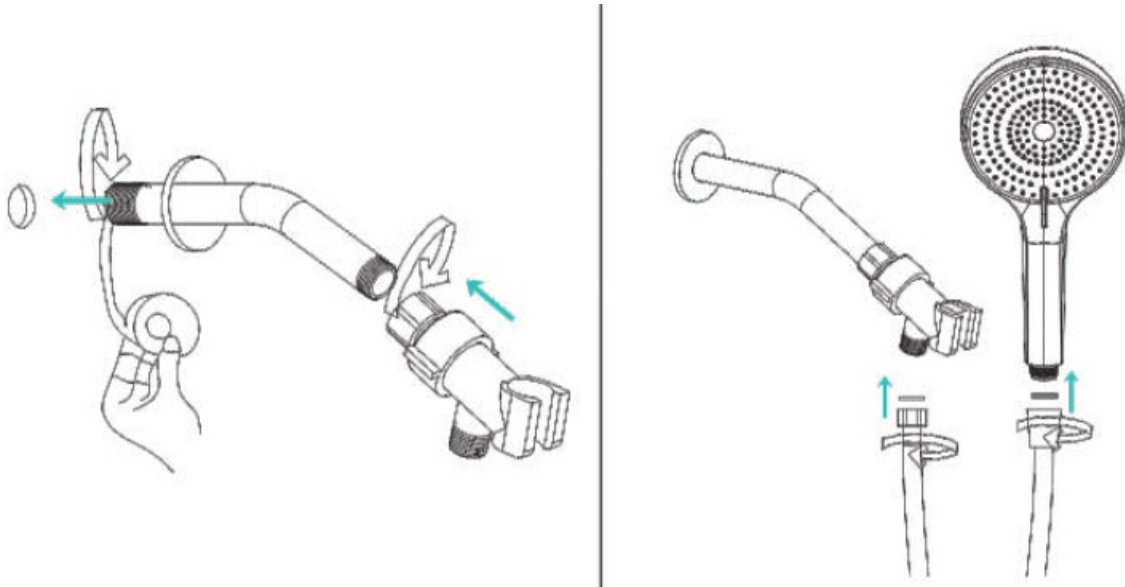
Step 3: Install Tub Spout



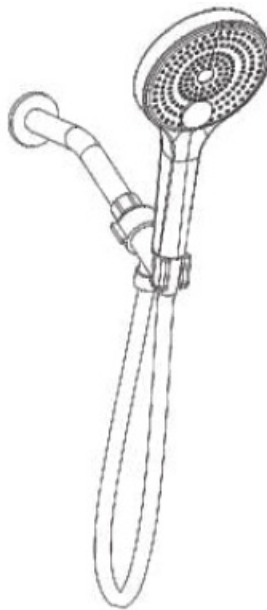


Step 4: Install Shower Arm and Shower Head

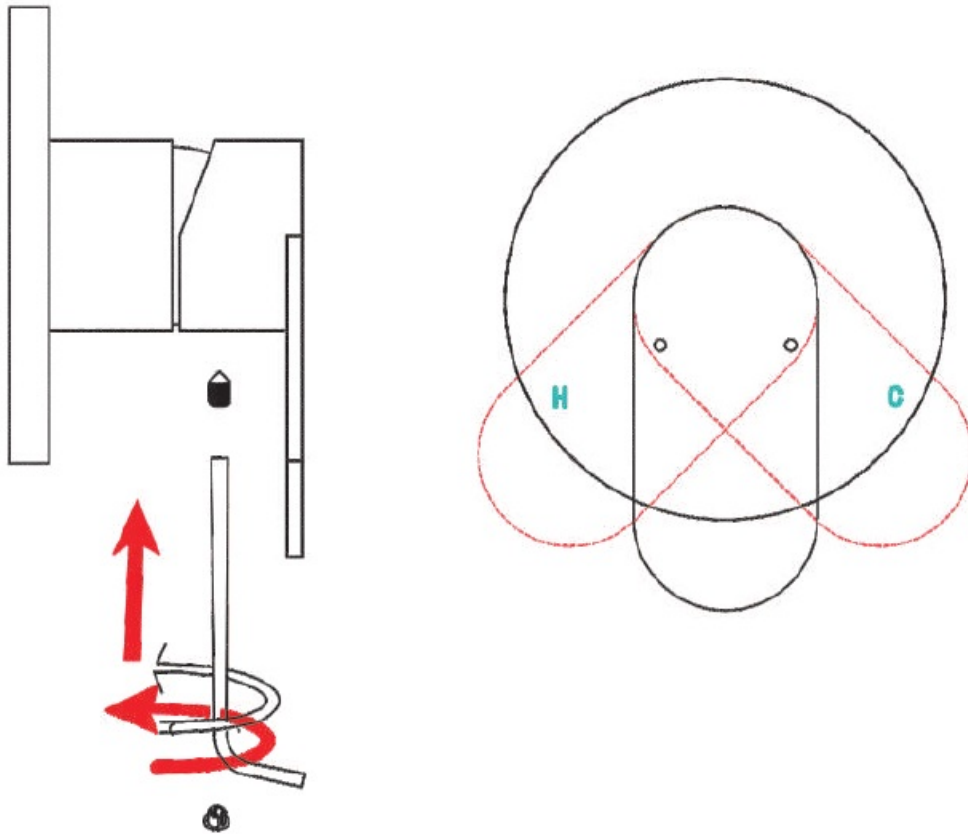
- Long end into the wall and connect the shower bracket to the short end.
- Make sure to put a washer into the conical and hex nut of hose and connect it to hand held shower head and bracket.



- Put your shower head on the bracket and test the ball up and down. Adjust the ball by tightening or loosening the adapter.




Adjust the red collar to limit the water temperature.



Warranty

- Before using the product, please read the “installation” carefully.
- We provide 5 years warranty. At any time during the warranty period of your purchase, if the product is damaged due to poor use material and workmanship.
- Any question, please timely contact us, we will answer you within 24 hours.

Documents / Resources

 <p>Installation Manual Shower Faucet with Tub Spout</p>	<p>TISTAYA High Pressure Shower System [pdf] Instruction Manual High Pressure Shower System, Pressure Shower System, Shower System</p>
---	--

References

- [User Manual](#)

