

Tiny Love
TO027
TAKE
ALONG
MOBILE



Tiny Love TO027 Take Along Mobile Instruction Guide

[Home](#) » [Tiny Love](#) » Tiny Love TO027 Take Along Mobile Instruction Guide 

Contents

- [1 Tiny Love TO027 Take Along Mobile](#)
- [2 BATTERY INFORMATION](#)
- [3 WARNING](#)
- [4 Product Key](#)
- [5 Attachments](#)
- [6 Operating the Take-Along Mobile™](#)
- [7 Care & Storage](#)
- [8 FCC STATEMENT](#)
- [9 FREQUENTLY ASKED QUESTIONS](#)
- [10 VIDEO – PRODUCT OVERVIEW](#)
- [11 References](#)
- [12 Related Posts](#)



Tiny Love TO027 Take Along Mobile



BATTERY INFORMATION

- We recommend alkaline batteries for longer battery life.
- Do not mix old and new batteries.
- Do not mix alkaline, standard (carbon-zinc) or rechargeable (nickel-cadmium) batteries.
- Nonrechargeable batteries are not to be recharged.
- Rechargeable batteries are to be removed from the unit before being charged.
- Rechargeable batteries are only to be charged under adult supervision.
- Only batteries of the same or equivalent type as recommended are to be used.
- Batteries are to be inserted with the correct polarity.
- The supply terminals are not to be short-circuited.
- Check that all contact surfaces are clean and bright before installing batteries.
- Batteries should be replaced by adults only.
- Exhausted batteries are to be removed from a product.
- Do not burn batteries. Dispose of batteries in a safe and appropriate manner.
- Install new batteries and retry the function before calling Consumer Relations on electronics.
- Uses 3 AA/LR6 (1.5V) batteries (not included).

WARNING

- Possible entanglement injury. Keep out of baby's reach.
- Remove the mobile from the crib or playpen when the baby begins to push up on his hands and knees.
- This toy is intended for visual stimulation and is not intended to be grasped by a child.
- Always attach all provided fasteners tightly to the crib or playpen according to the instructions. Check frequently.
- Do not add additional strings or straps to attach to the crib or playpen.
- Do not modify or alter this product in any way.
- Do not leave your children unattended for any time.
- **IMPORTANT!** We recommend attaching this toy to a crib side that is fixed and cannot move up or down.
- Adult assembly is required.
- Philips screwdriver required (not included).
- Remove all packaging materials before use. Suffocation Hazard.

Product Key

- A. Connector arm (2 parts)
- B. Mobile



A



B

Battery Installation:

- Loosen the battery compartment screw using a crosshead screwdriver (Fig. 1).
- Open the battery compartment and insert three new AA (1.5V) alkaline batteries (Fig. 2). Match the (+) and (-) symbols according to the diagram in the battery compartment.
- Position the battery compartment cover securely back in place and tighten it with the screwdriver.

This product can be used with:

- Pack & Plays/travel cots and bassinets
- Infant carrier
- Strollers

Attachments



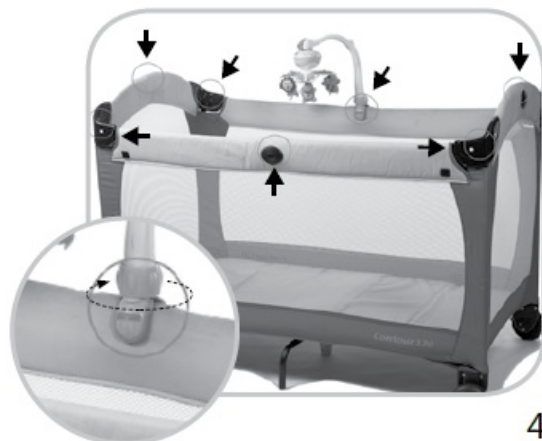
1



2



3



4

Attaching your Take-Along Mobile™ to your Pack & Play / travel cot or bassinet

(using the 2-part connector arm)

1. Click together the 2 parts of the connector arm (Fig. 3).
2. Locate a hard sturdy edge of the Pack & Play/travel cot or bassinet and clip the mobile to it (Fig. 4).

Note: Do not attach the mobile to a soft material edge.

3. Turn the ring at the bottom of the connector arm clockwise to tighten (Fig. 4).

Note: The universal connector arm fits most portable cribs. Check that the mobile is completely secure. Make sure that the connector arm is tightly secured to the Pack & Play / travel cot or bassinet and that it doesn't swing.

4. Loop the Velcro strap through the plastic handle of the mobile and secure it by pressing both sides together (Fig. 5).

Attaching your Take-Along Mobile™ to your infant carrier

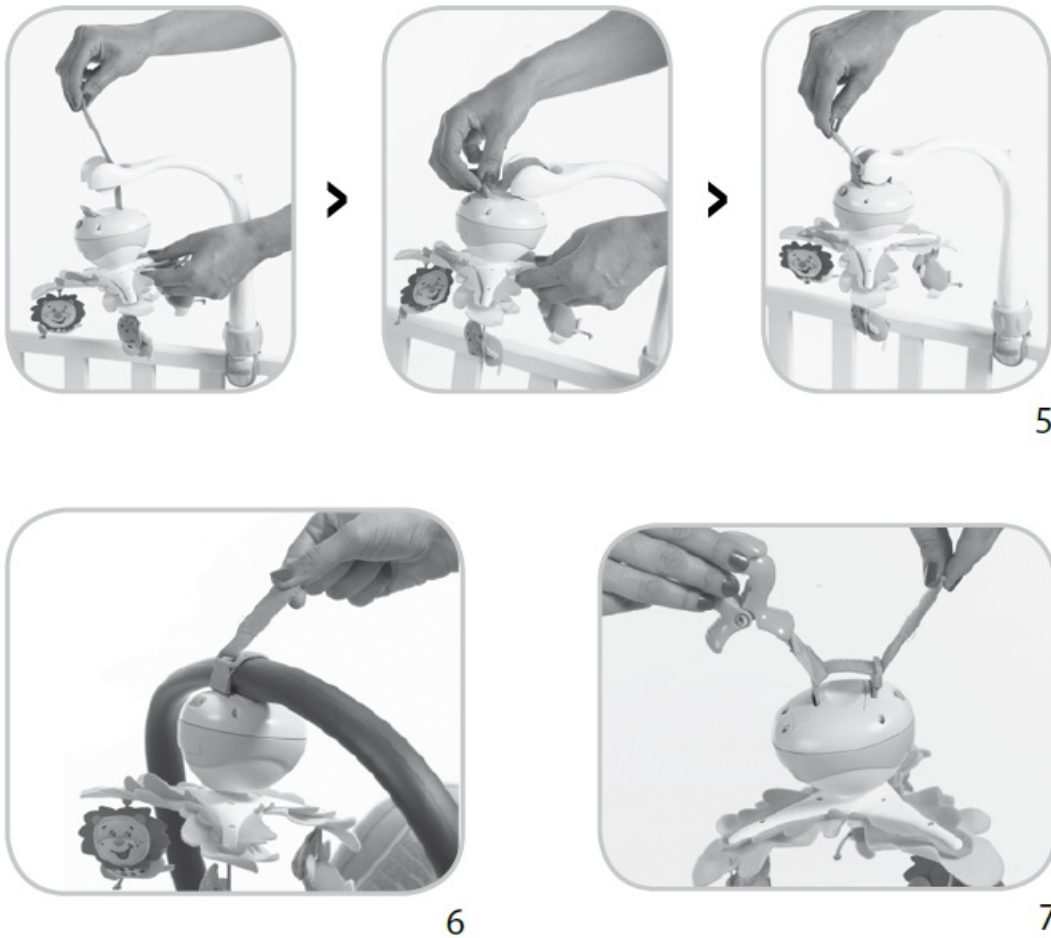
(using the Velcro straps)

Note: Do not use the connector arm. To dismantle the connector arm, open the Velcro strap and remove it.

1. Wrap the strap around the infant carrier handle and thread the end through the plastic buckle (Fig. 6).
2. Secure the strap by pressing both sides together.

Attaching your Take-Along Mobile™ to your stroller

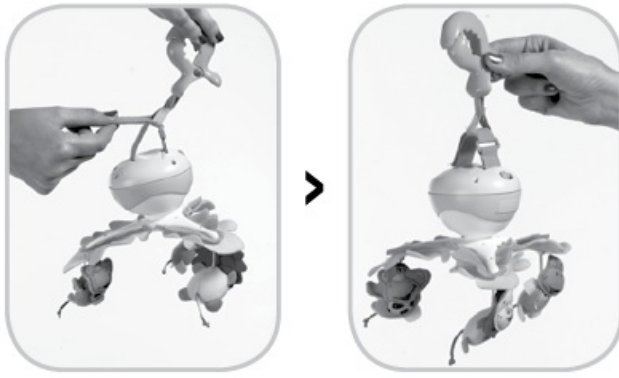
(using the alligator clip)



1. Thread the Velcro strap through the loop of the alligator clip (Fig. 7).
2. Thread the Velcro strap through the plastic buckle and secure it by pressing both sides together (Fig. 8).
3. You can now clip the Take-Along Mobile™ to the canopy of your stroller (Fig. 9).

Operating the Take-Along Mobile™

The mobile can be set to one of three modes: OFF / ON / MUTE (Fig. 10).



8



9



10

1. Slide the operating switch to the "ON" position. 30 minutes of continuous music will start playing and the mobile will start turning. All 5 tunes of approximately one minute each will play consecutively. At the end of 30 minutes of play, the mobile will turn itself off. To continue playing slide the switch to "OFF" and then to "ON" again.
2. To operate your mobile without music, slide the operating switch to the "MUTE" position. To stop the mobile, slide the switch back to the "OFF" position.
3. At the end of play, slide the switch to the "OFF" position.

Care & Storage

- Use a damp cloth to wipe clean.
- DO NOT submerge any part of the product in water.
- Remove batteries when stored for long periods of non-use.

FCC STATEMENT

(UNITED STATES ONLY)

This device complies with Part 15 of the FCC Rules. Operation is subject to the following two conditions:

1. This device may not cause harmful interference, and
2. This device must accept any interference received, including interference that may cause undesired operation.

RADIO AND TELEVISION INTERFERENCE

This equipment has been tested and found to comply with the limits for a Class B digital device, pursuant to Part 15 of the FCC rules. These limits are designed to provide reasonable protection against harmful interference in a residential installation. This equipment generates uses and can radiate radio frequency energy and, if not installed and used in accordance with the instructions, may cause harmful interference to radio communications. However, there is no guarantee that interference will not occur in a particular installation. If this equipment does cause harmful interference to radio or television reception, which can be determined by turning the equipment off and on, the user is encouraged to try to correct the interference by one or more of the following measures:

- Reorient or relocate the receiving antenna.
- Increase the separation between the equipment and the receiver.
- Connect the equipment to an outlet on a circuit different from that to which the receiver is connected.
- Consult the dealer or an experienced radio/TV technician for help.
- Changes and Modifications not expressly approved by the manufacturer or registrant of this equipment can void your authority to operate this equipment under the Federal Communications Commission's rules.

©2017. Tiny Love LTD.

www.djgusa.com | [800-544-1108](tel:800-544-1108) www.tinylove.com

Made in China.

Distributed by: Dorel Juvenile Group, Inc., 2525 State St., Columbus, IN 47201-7494

Dorel Juvenile Canada, 2855 Argentia Road, Unit 4, Mississauga, ON, L5N 8G6

E3031IS658 0D

FREQUENTLY ASKED QUESTIONS

What is the Tiny Love TO027 Take Along Mobile designed for?

The Tiny Love TO027 Take Along Mobile is designed to entertain and soothe babies while in their crib, stroller, or car seat.

How does the Tiny Love TO027 Take Along Mobile attach to different surfaces?

The Tiny Love TO027 Take Along Mobile features a universal attachment clip that allows it to be securely fastened to cribs, strollers, and play yards.

What types of music does the Tiny Love TO027 Take Along Mobile play?

The Tiny Love TO027 Take Along Mobile plays a variety of melodies, including classical music and lullabies, to help calm and engage infants.

What are the visual features of the Tiny Love TO027 Take Along Mobile?

The Tiny Love TO027 Take Along Mobile includes colorful hanging toys that are visually stimulating for babies, encouraging visual tracking.

What age range is the Tiny Love TO027 Take Along Mobile suitable for?

The Tiny Love TO027 Take Along Mobile is suitable for infants from birth up to approximately 5 months old or until they can reach for the toys.

How does the Tiny Love TO027 Take Along Mobile promote development?

The Tiny Love TO027 Take Along Mobile promotes sensory development through music, movement, and visual stimulation from its colorful toys.

What materials are used in the construction of the Tiny Love TO027 Take Along Mobile?

The Tiny Love TO027 Take Along Mobile is made from safe, non-toxic materials that are suitable for babies.

How long do the melodies last on the Tiny Love TO027 Take Along Mobile?

The melodies on the Tiny Love TO027 Take Along Mobile typically play for about 20 minutes before automatically shutting off.

Can you adjust the height of the Tiny Love TO027 Take Along Mobile?

The height of the Tiny Love TO027 Take Along Mobile can be adjusted based on where it is attached (crib or stroller).

How does the design of the Tiny Love TO027 Take Along Mobile benefit parents?

The design of the Tiny Love TO027 Take Along Mobile allows parents to keep their baby entertained easily while they attend to other tasks.

What should I do if the Tiny Love TO027 Take Along Mobile does not turn on?

If your Tiny Love TO027 Take Along Mobile does not turn on, first check if the batteries are installed correctly and replace them with new AA batteries if necessary.

Why is the music on my Tiny Love TO027 Take Along Mobile too quiet?

The Tiny Love TO027 Take Along Mobile has a fixed volume level. If it seems too quiet, ensure that the mobile is placed in an area where ambient noise is minimal to enhance sound perception.

How can I fix the spinning mechanism of the Tiny Love TO027 Take Along Mobile if it stops working?

If the spinning mechanism of your Tiny Love TO027 Take Along Mobile stops, check for any obstructions around the mobile and ensure that the batteries are fresh and properly installed.

What should I do if the attachment clip of my Tiny Love TO027 Take Along Mobile doesn't secure properly?

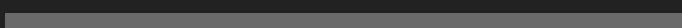
Ensure that you are attaching the Tiny Love TO027 Take Along Mobile to a sturdy, hard edge rather than a soft surface. If it still doesn't secure well, consider using the Velcro strap for added stability.

Why does my Tiny Love TO027 Take Along Mobile make a loud noise while playing music?

A loud noise may indicate a malfunction within the speaker system of your Tiny Love TO027 Take Along Mobile. Try replacing the batteries and see if that resolves the issue; otherwise, contact customer support.



00:00



00:00



[Download the PDF Link](#) [Entire updated 2024 Take A Long Mobile Instruction Guide](#)
[Along-Mobile-Instruction-Guide.mp4](#)

References

- User Manual

Manuals+, Privacy Policy

This website is an independent publication and is neither affiliated with nor endorsed by any of the trademark owners. The "Bluetooth®" word mark and logos are registered trademarks owned by Bluetooth SIG, Inc. The "Wi-Fi®" word mark and logos are registered trademarks owned by the Wi-Fi Alliance. Any use of these marks on this website does not imply any affiliation with or endorsement.