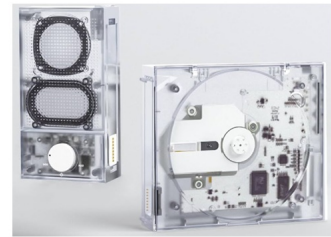


TiNYL
TiNLY Sp/lit
Bluetooth CD
Player



TiNLY Sp/lit Bluetooth CD Player Instruction Manual

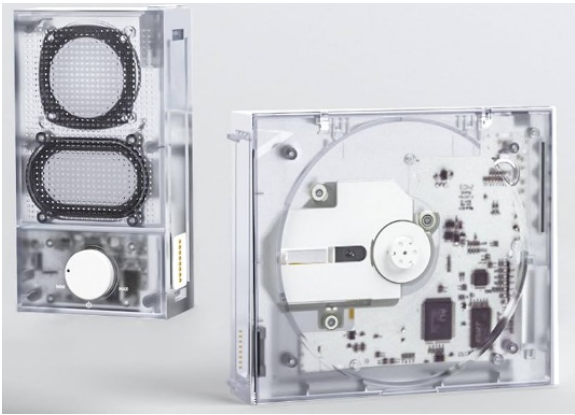
[Home](#) » [TiNLY](#) » TiNLY Sp/lit Bluetooth CD Player Instruction Manual 

Contents

- [1 TiNLY Sp/lit Bluetooth CD Player](#)
- [2 Products Overview](#)
- [3 Screen Display and Key Description](#)
- [4 Main Specifications](#)
- [5 Issues & Solutions](#)
- [6 FCC Statement](#)
- [7 Documents / Resources](#)
 - [7.1 References](#)
- [8 Related Posts](#)



TiNLY Sp/lit Bluetooth CD Player



Products Overview



CD Player



USB Cable



Product Manual



Warranty Card

Screen Display and Key Description

Play status display

0 102:43

Trcak Number Play Time

Play mode/Player mode

CD PLAY Cd

Bluetooth Input bt IN

Bluetooth output bt OUT

CD play mode

Random RAND

Repeat one REPI

Repeat all REPLL

Repeat off REPOFF

MIN

MAX

Volume Control/Power Control

MODE

Power/Play Mode/Player Mode

▶/||

Play/Pause/Stop/CD Play Mode

◀

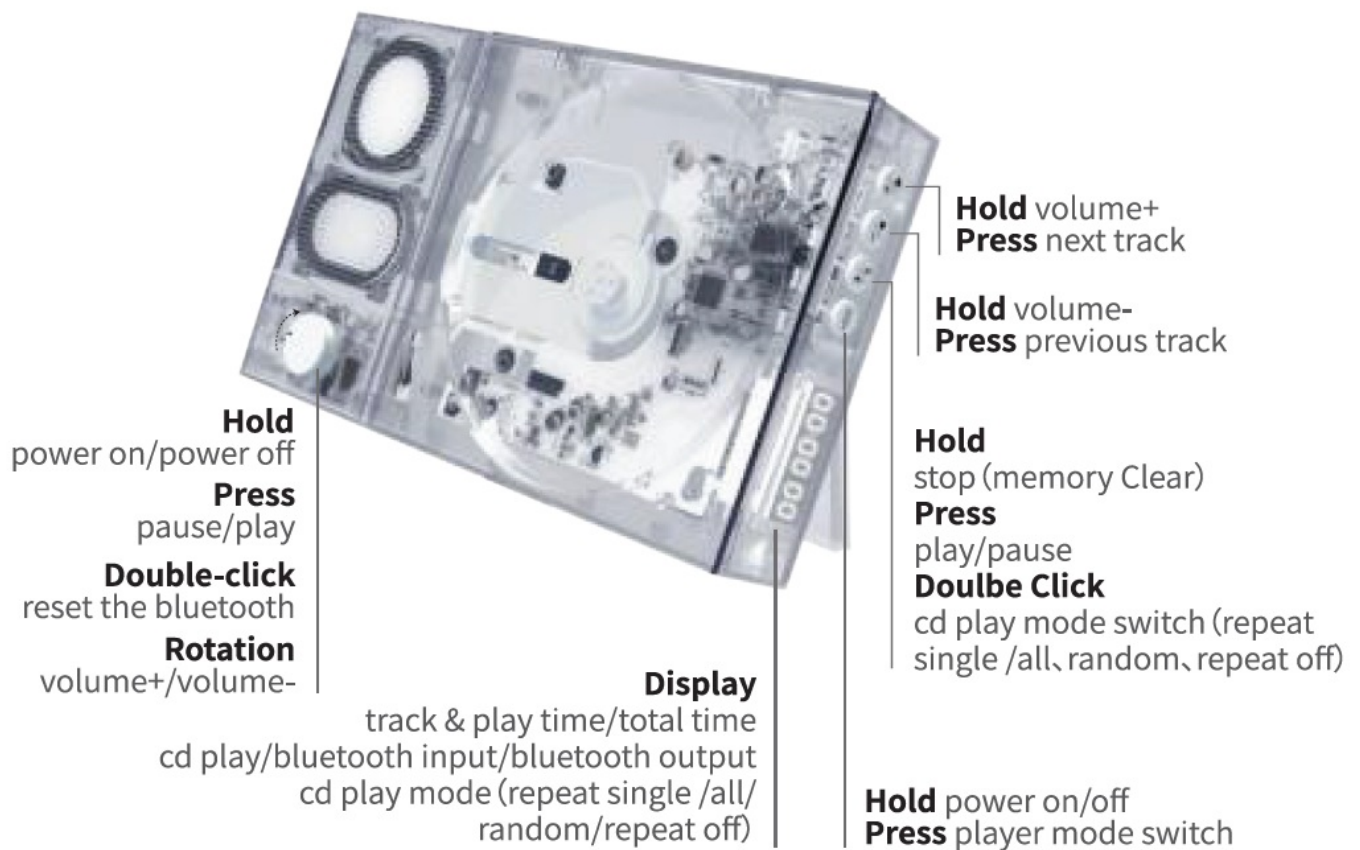
Decrease Volume/Previous Track

▶

Increase Volume/Next Track

CD player&Speaker all in one

Button Description



Complete Model

Bluetooth pair

Press the mode button to switch to the BT-IN mode.

Mobile phone connection

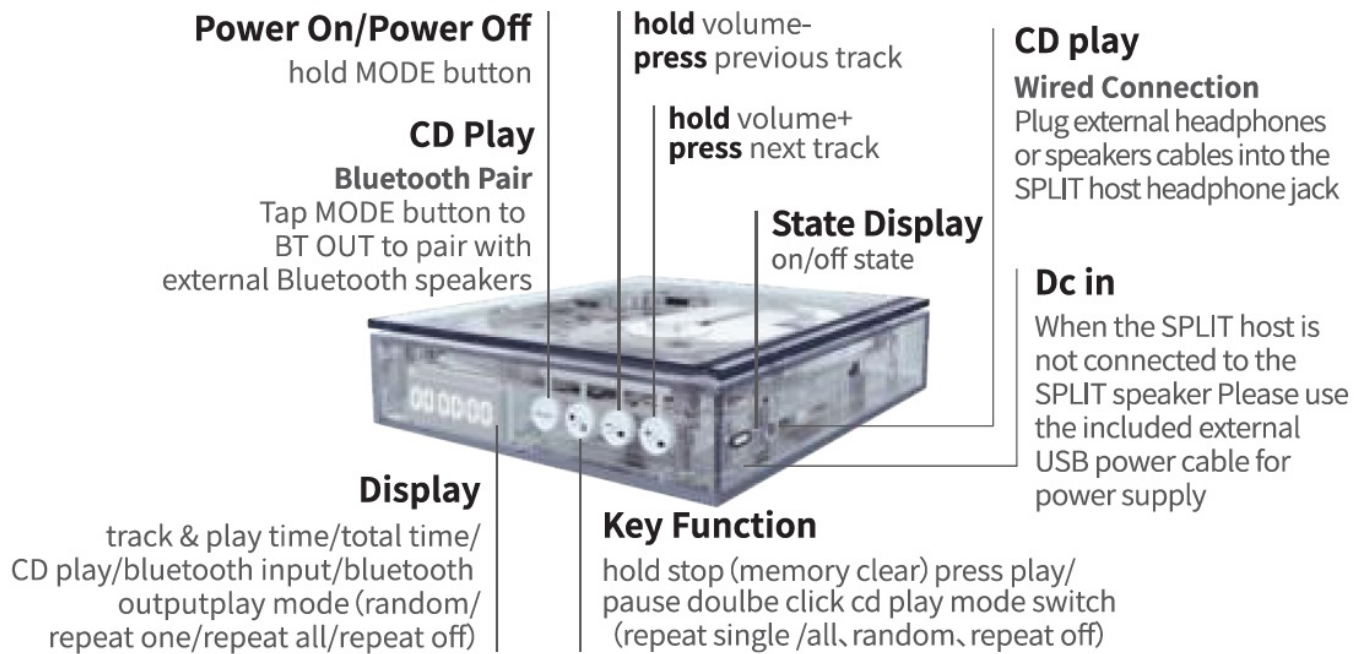
Bluetooth signal "SPLIT" CD PLAY Press MODE button to switch to CD PLAY mode. It will be playing the cd disk.

Bluetooth output

Press the MODE button to switch to BT-OUT mode. Connects to external Bluetooth devices.

CD Player

Button Description



CD Player Button Description

Wireless connection to external Bluetooth speaker devices

Note: If the device is independent, connect the power supply

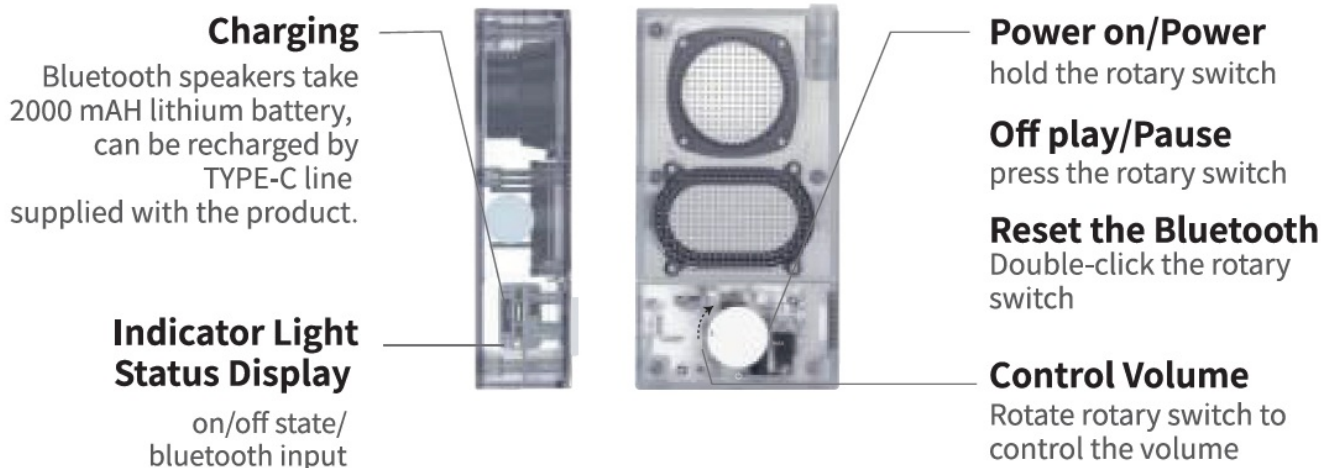
1. Step1 Press the MODE button to enter BT-OUT mode
2. Step 2 Turn on the external speaker, Adjust to Bluetooth pairing status
3. Step 3 Bluetooth connection successful

Wireless connection to SPLIT

1. Step 1 Press the MODE button to switch to BT-OUT mode
2. Step 2 Turn on the power, Verify that the speaker is in Bluetooth pairing mode (blue light flash)
3. Step 3 Bluetooth connection successful

Bluetooth speaker

Description



Bluetooth speaker Independent Use

Bluetooth input

1. Step 1 Automatically enter Bluetooth search mode after power on.
The indicator light is on and the blue light is flashing.
2. Step 2 Mobile phone connection Bluetooth signal “split”.

Main Specifications



- Supported formats CD-DA/MP3 (CDR-RW)
- CD-R/RW MP3 (32-320k bps)
- Bluetooth output protocol SBC and AAC
- Output (main unit) 3.5mm stereo audio output jack/Bluetooth 5.3
- Power 5W, standby power 0.5W
- Power Supply DC5V/2ATYPE-C interface/ built-in battery 2000mAh
- Maximum external dimensions 230mm*138mm*35mm
- Mass 595g
- Accessories 595g TYPE-C power cable *1, CD player *1

*This product does not support the use of dry batteries

Safety Precautions

1. Only CD discs containing the logo shown at the right can be played on this set.
2. Do not stick a label etc. on a disc.
3. Do not heat discs.
4. Do not use this apparatus near water.
5. Refer all servicing to qualified service personnel.
Servicing is required when the apparatus has been damaged in any way, such as power-supply cord or plug is damaged, liquid has been spilled or objects have fallen into the apparatus has been exposed to air or moisture, does not operate normally, or has been endropped.
6. Do not place heavy objects on the CD player.
7. Do not install near any heat sources such as radiators, heat registers, stoves, or other apparatus (including amplifiers) that produce heat.
8. Do not install near strong magnetic fields or electrical sources.
9. Spraying flammable insecticides near the unit.
10. Must recycle the processing battery correctly.
11. Do not place the battery in a place where it is exposed to strong light/where the fire source is overheated.

Issues & Solutions

Issue	Solution
Unable to power on, power indicator is not lit.	Please use a TYPE-C cable to connect an external power source to activate the battery.
The speaker has no sound.	Please press the MODE button to confirm if it's in CD mode (No sound in BT-OUT mode).
Skipping sound occurs at maximum volume during CD playback.	Low battery level, please charge promptly.
After connecting the headphones, the volume is low.	Please press and hold the  button to increase the volume.
The screen displays "  ".	Low battery level, please charge promptly.

FCC Statement

This device complies with Part 15 of the FCC Rules. Operation is subject to the following two conditions:

1. This device may not cause harmful interference, and
2. this device must accept any interference received, including interference that may cause undesired operation.

NOTE: This equipment has been tested and found to comply with the limits for a Class B digital device, pursuant to Part 15 of the FCC Rules. These limits are designed to provide reasonable protection against harmful interference in a residential installation. This equipment generates uses and can radiate radio frequency energy and, if not installed and used in accordance with the instructions, may cause harmful interference to radio communications. However, there is no guarantee that interference will not occur in a particular installation. If this equipment does cause harmful interference to radio or television reception, which can be determined by turning the equipment off and on, the user is encouraged to try to correct the interference by one of the following measures:

- Reorient or relocate the receiving antenna.
- Increase the separation between the equipment and receiver.
- Connect the equipment into an outlet on a circuit different from that to which the receiver is connected.
- Consult the dealer or an experienced radio/TV technician for help.

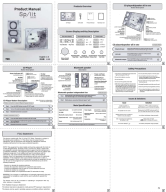
WARNING: Any changes or modifications not expressly approved by the party responsible for compliance could void the user's authority to operate this equipment.

The device must not be co-located or operating in conjunction with any other antenna or transmitter.

FCC Radiation Exposure Statement

The device has been evaluated to meet general RF exposure requirement. The device can be used in portable exposure condition without restriction

Documents / Resources



[TiNLY Sp/lit Bluetooth CD Player](#) [pdf] Instruction Manual
2BF9Y-SPLIT, 2BF9YSPLIT, Sp lit Bluetooth CD Player, Sp lit, Bluetooth CD Player, CD Player, Player

References

- [User Manual](#)

[Manuals+.](#) [Privacy Policy](#)

This website is an independent publication and is neither affiliated with nor endorsed by any of the trademark owners. The "Bluetooth®" word mark and logos are registered trademarks owned by Bluetooth SIG, Inc. The "Wi-Fi®" word mark and logos are registered trademarks owned by the Wi-Fi Alliance. Any use of these marks on this website does not imply any affiliation with or endorsement.