



time2 Olivia 2 Indoor Rotating WiFi Security Camera User Guide

[Home](#) » [Time2](#) » time2 Olivia 2 Indoor Rotating WiFi Security Camera User Guide 

*time2 Olivia 2 Indoor Rotating WiFi
Security Camera User Guide*



Olivia 2

Start Up Guide

Protect and monitor the things you love

Struggling to read?

View this start up guide online at time2technology.com/manuals

Contents

- 1 What's in the box
- 2 Get Started
- 3 Download App
- 4 Register
- 5 Add Home
- 6 Add Olivia 2
- 7 Live View
- 8 Playback
- 9 Add SD Card
- 10 Format SD Card
- 11 Reset
- 12 Installation
- 13 Documents / Resources
- 14 Related Posts

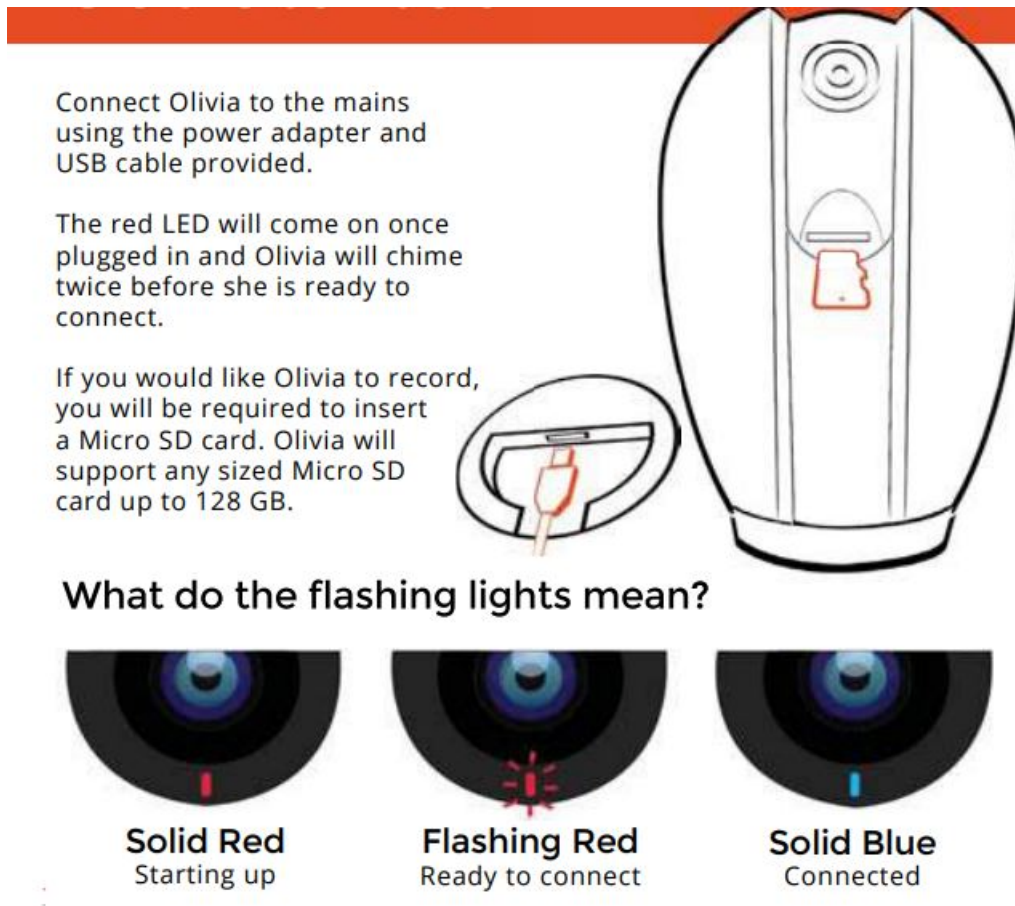
What's in the box



Be ready

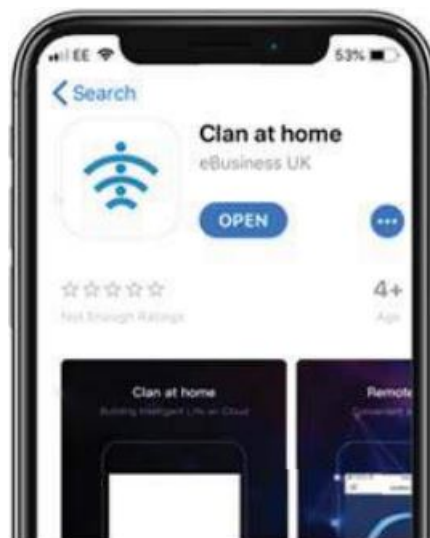
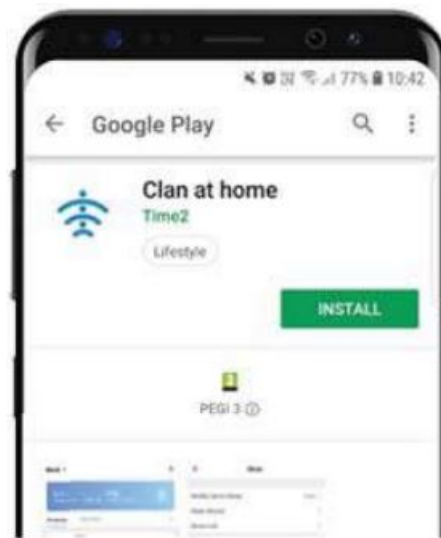
You will need your WiFi router password. Write it down below so its handy when you need it!

Get Started

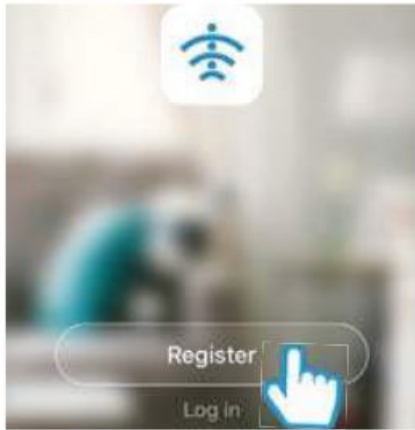


Download App

Download the "Clan at home" app from the iOS App Store or Google Play Store

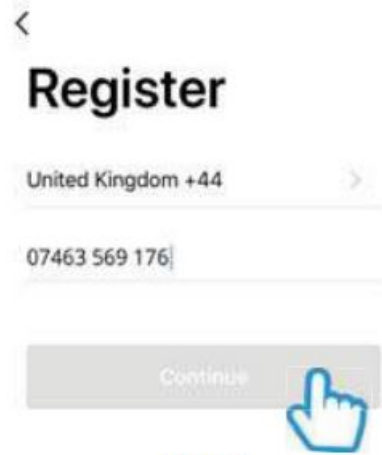


Register



Step 1

Open the app then select Register



Step 2

Enter your mobile phone number or email address

Please ensure you enter your full phone number including "0"



Step 3

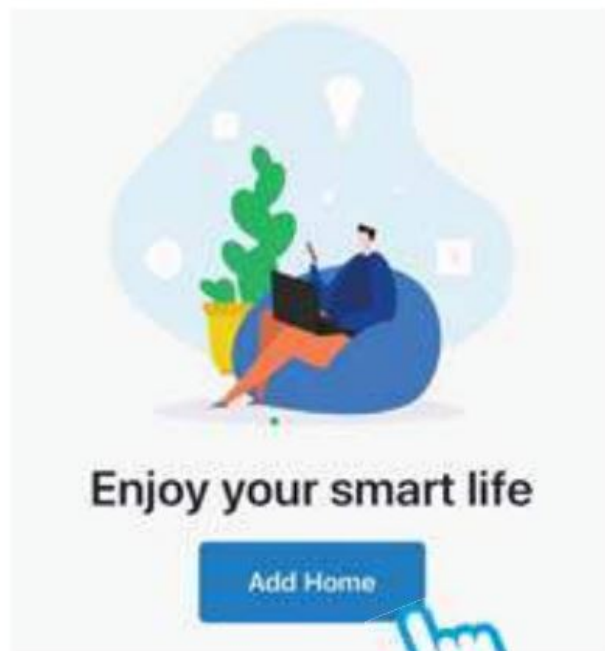
Enter the verification code sent via SMS or email



Step 4

Create your password to login

Add Home



Step 1

Select "Add Home"

Cancel Add Home Done

Name Hannah's Home

Location Sheffield

Smart devices in:

Living Room ☒

Bedroom ☒

Second Bedroom ☐

Step 2

Enter a name for your home and select location

Cancel Add Home Done

Name Hannah's Home

Location Sheffield

Smart devices in:

Living Room ☒

Bedroom ☒

Second Bedroom ☐

Dining Room ☐

Kitchen ☐

Step 3

Select rooms to add to your Home then press "Done" to save

Location Blackburn Challenge Court

Smart devices in:

Living Room ☒

Bedroom ☒

Second Bedroom ☐

Dining Room ☒

Kitchen ☒

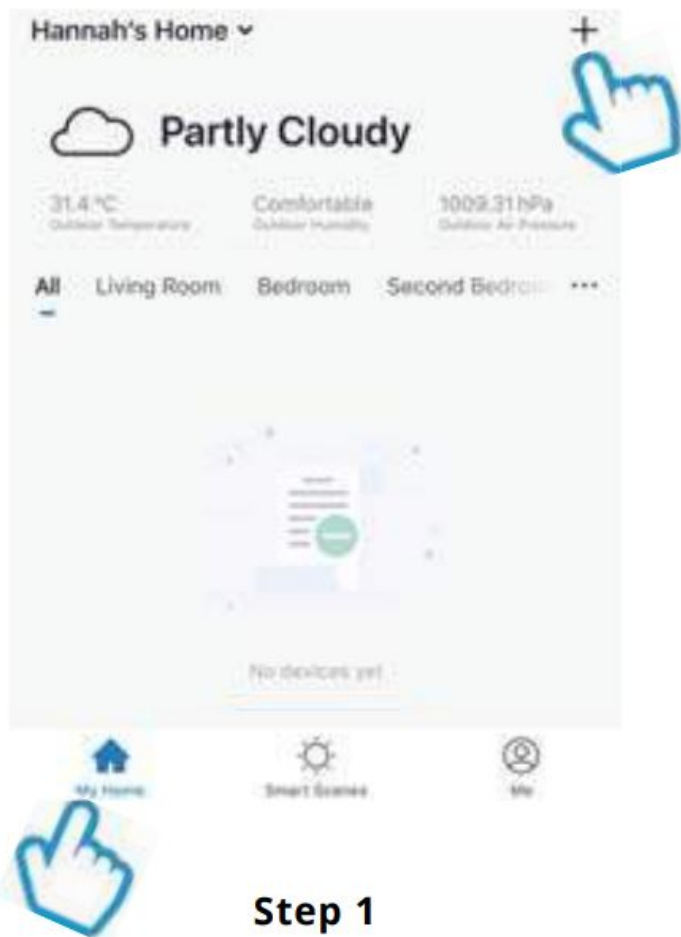
Home added successfully

View Home Done

Step 4

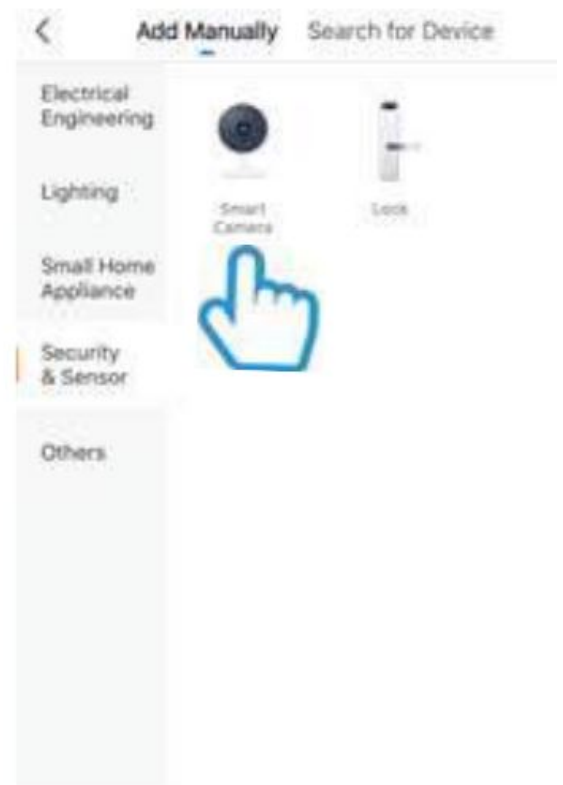
Once completed, press Done to add your Camera

Add Olivia 2



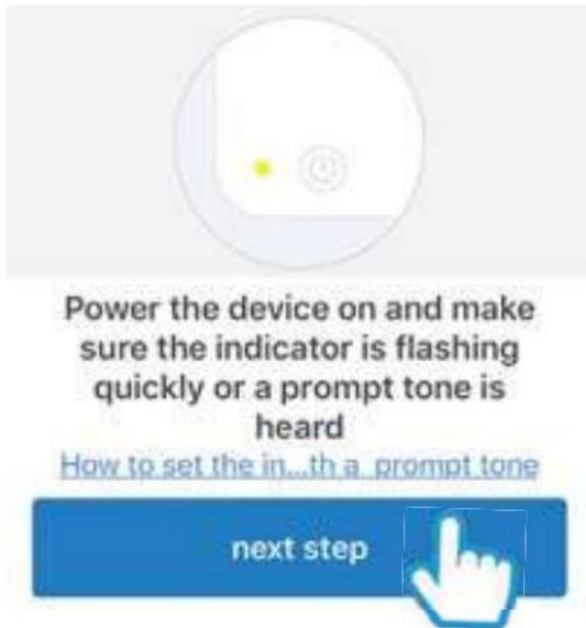
Step 1

In My Home, click the (+) icon in the top right-hand corner of the screen



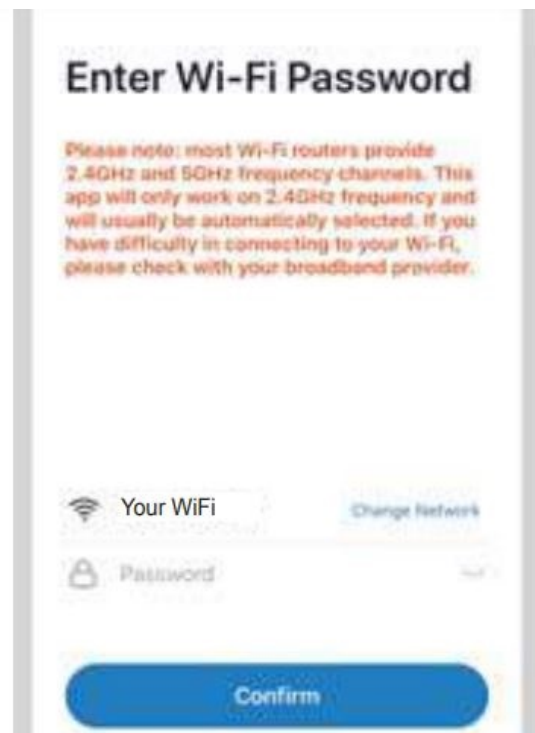
Step 2

Select Smart Camera



Step 3

Make sure the device is flashing red. (If it is not flashing, see the reset instructions on page 16)



Step 4

Enter your WiFi router password
Then press Confirm



Step 5

Remove the plastic film from the camera lens

Hold your phone up to Olivia



Step 6

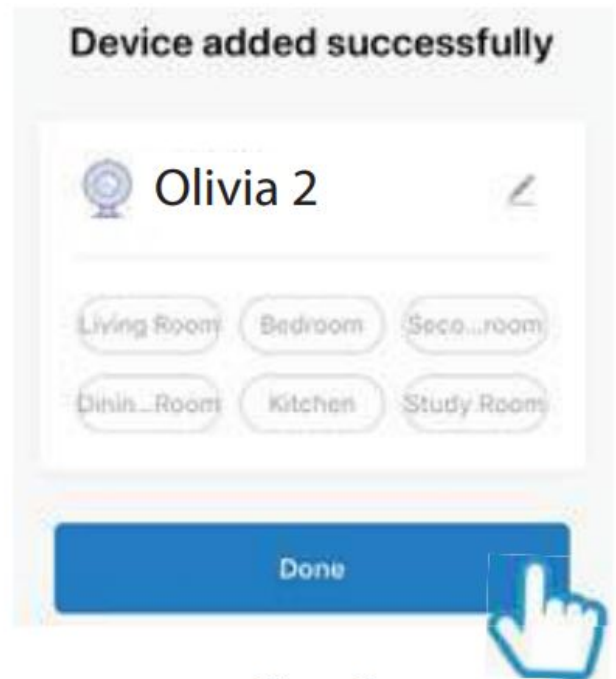
If you heard Olivia chime, press "I heard the beep"

If you don't hear the chime, reposition Olivia in front of the phone



Step 7

Olivia will then establish a connection to Clan.

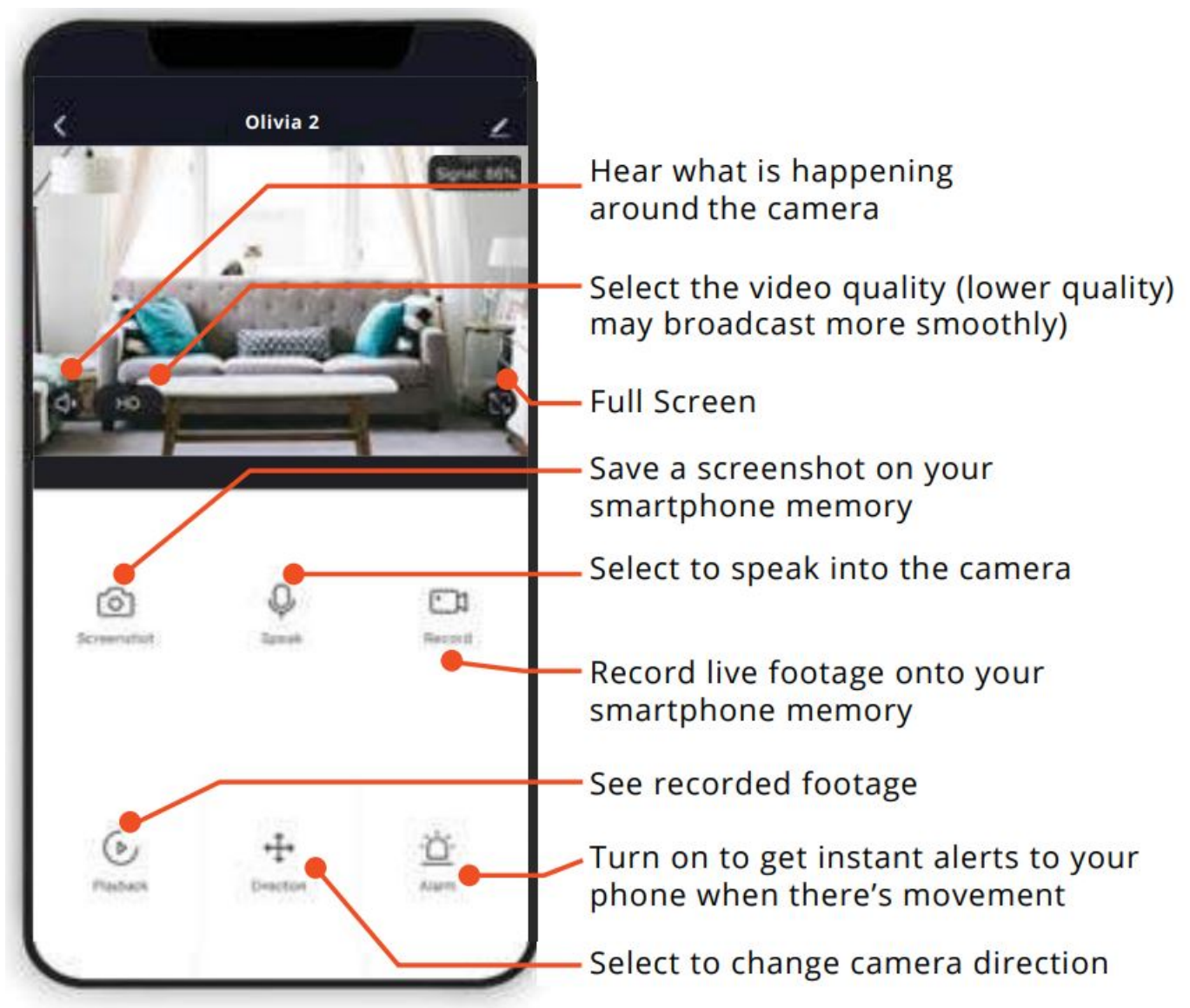


Step 8

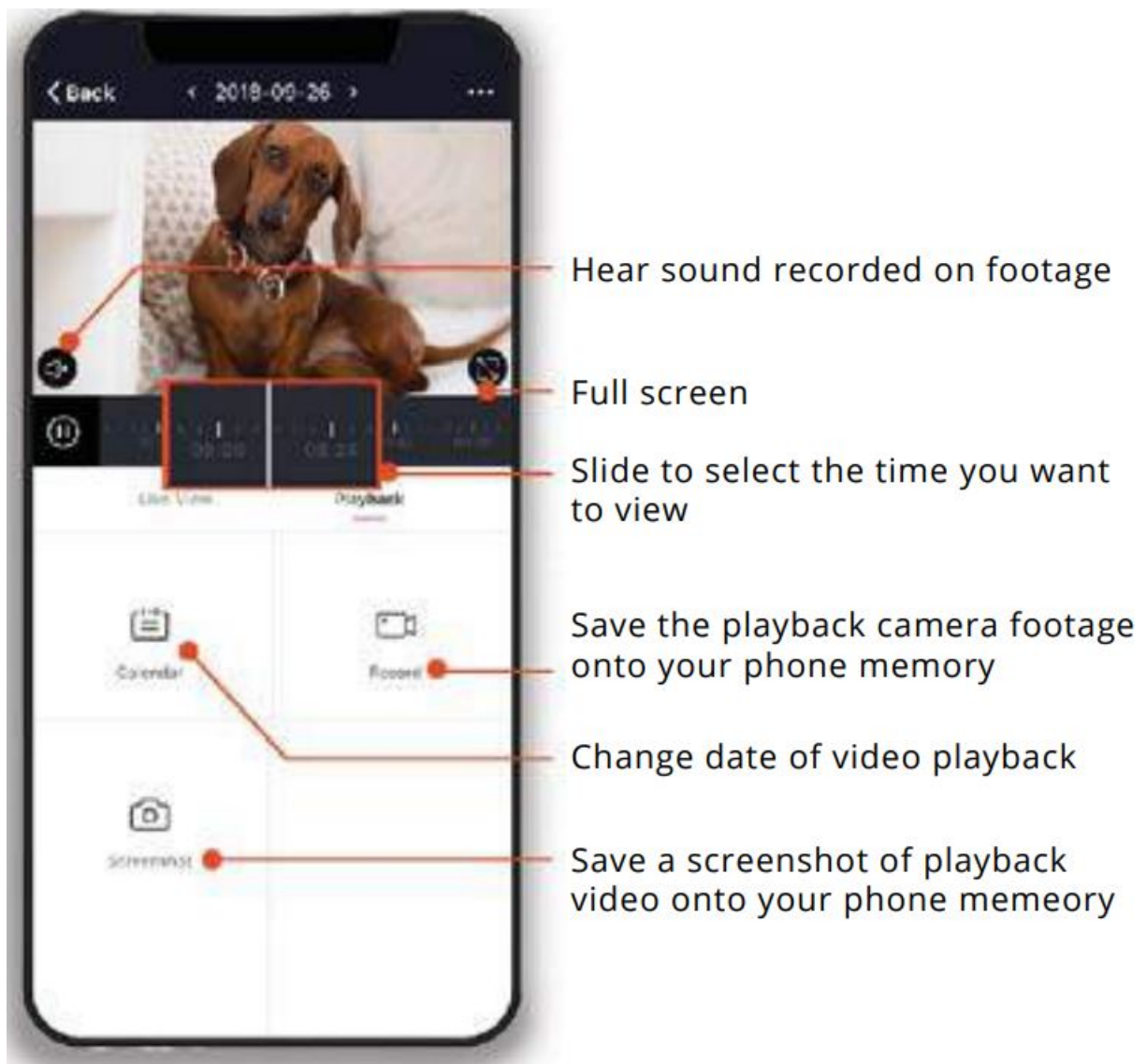
Once connected you can change Olivia's name and select the room she's in.

Press Done

Live View



Playback



Add SD Card

If you would like Olivia to record, you will be required to insert a Micro SD Card. Olivia will support any sized Micro SD Card up to 128GB

Step 1

Turn off power to Olivia

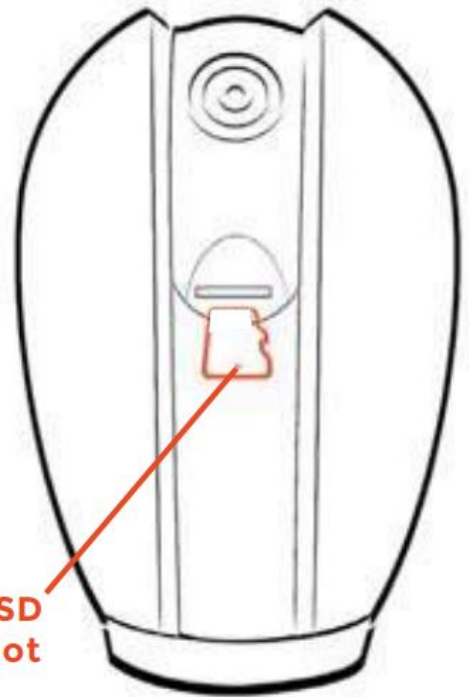
Step 2

Gently rotate the lens upwards to locate the Micro SD Card slot. Insert the card in to the slot far enough for it to click into place

Step 3

Turn the power to Olivia back on

Micro SD
Card Slot



Format SD Card

Before Olivia can start recording, you will have to format the Micro SD Card.

Before Olivia can start recording, you will have to format the Micro SD Card.



Step 1

Select your camera and click on "... " to bring up the settings.

Select SD Card Settings.



Step 2

Click Format SD Card and press confirm. Olivia will begin to format the Micro SD Card.

Please note: it will take a couple of minutes to format the card.

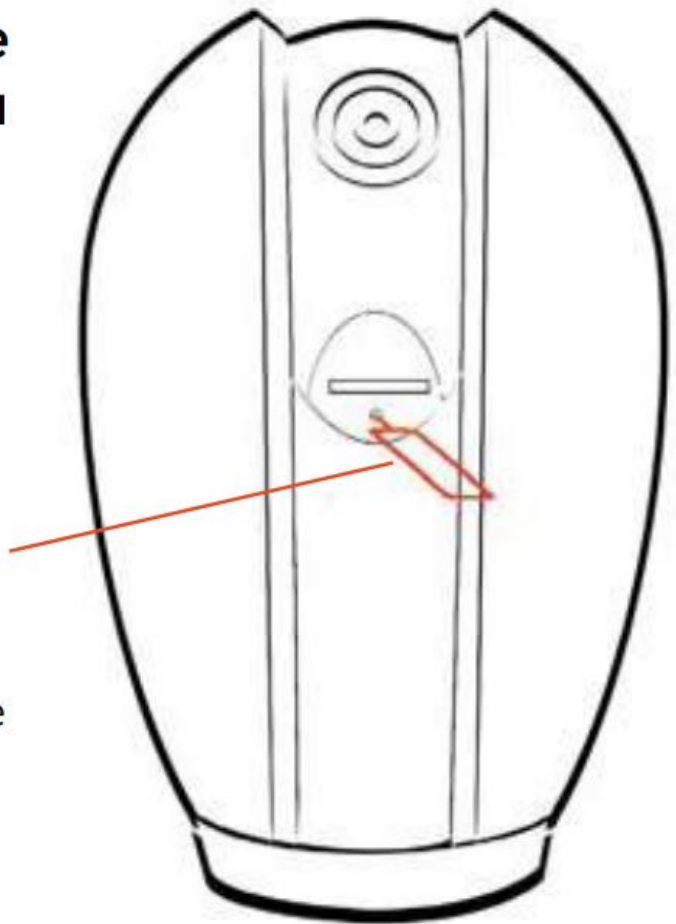
Reset

If you are having trouble connecting to Olivia you may need to do a reset.

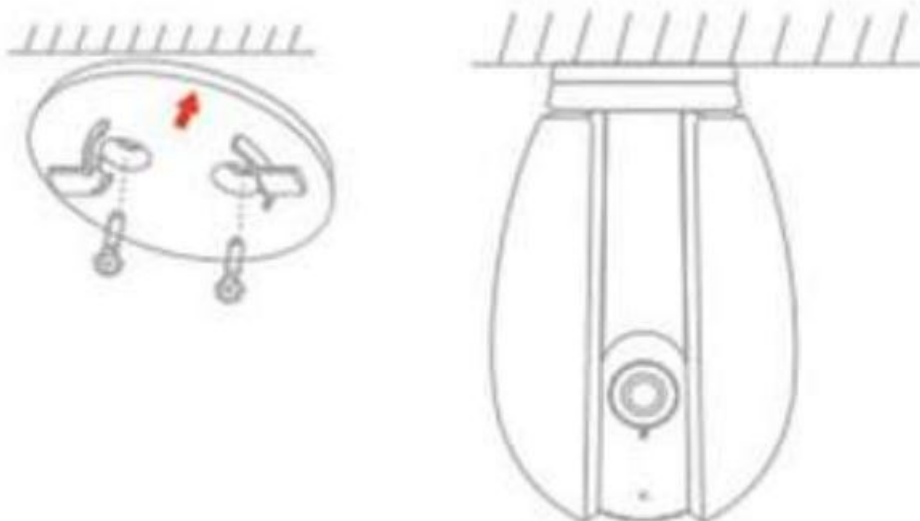
How to reset Olivia 2

Gently rotate the lens upwards to locate the reset button.

Use the reset pin provided to hold down the button on the front of the camera for up to 10 seconds until the camera chimes twice and the LED is flashing red.



Installation



Easy Mounting

Use the provided mounting bracket to mount the camera onto a surface, simply attach the bracket, ensuring its snugly on to the bottom of the camera. Then twist to the left. This locks the bracket into the camera.

Be a part of Clan

Are you on Facebook? Join our Clan to speak to other members of the Clan and our dedicated UK based support team:

www.facebook.com/groups/partoftheclan


Need further Help?

Contact our Customer Support team on Social Media



or visit our support page time2technology.com/support

Documents / Resources

	<p>time2 Olivia 2 Indoor Rotating WiFi Security Camera [pdf] User Guide Olivia 2, Indoor Rotating WiFi Security Camera</p>
--	--

[Manuals+](#).