



## Time2 Motion & Door + Window Sensor User Guide

[Home](#) » [Time2](#) » Time2 Motion & Door + Window Sensor User Guide 

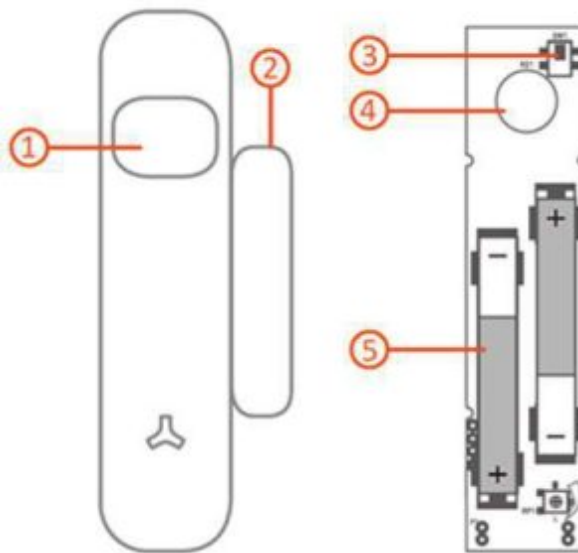
### Motion & Door + Window Sensor User Guide

The combined motion & door/window sensor can be installed on doors, windows, or even cupboards. The sensor transmits a signal to the Noah hub when the door or window is opened or when movement is detected, triggering an alarm.

#### Contents

- [1 Features](#)
- [2 Installation](#)
- [3 Normal Mode](#)
- [4 Pet-Friendly Mode](#)
- [5 Specification:](#)
- [6 Documents / Resources](#)
- [7 Related Posts](#)

### Features





1. Motion detection window
2. Magnet
3. Tamper switch
4. Infrared sensor
5. Battery compartment

### Tamper Alarm

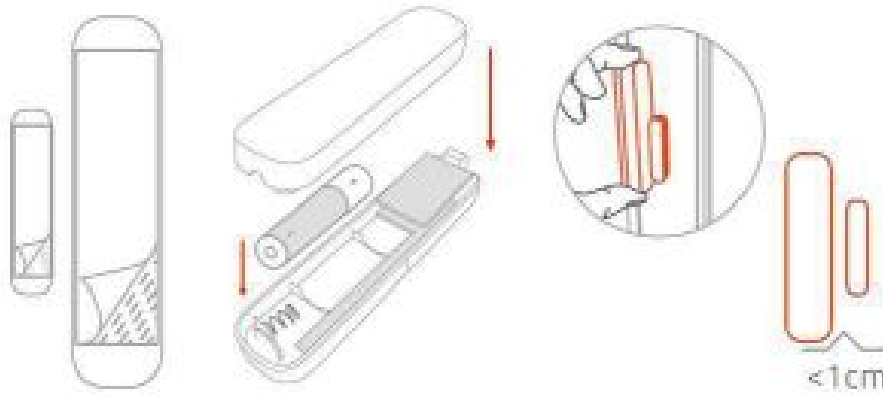
If an intruder attempts to remove or damage the sensor, a tamper alarm is triggered and the user is notified immediately.

### Working Status

	LED flashes once – Door or window has been opened. The alarm has been triggered
	LED flashes every 3 seconds – Low battery indicator. Replace batteries immediately

### Installation

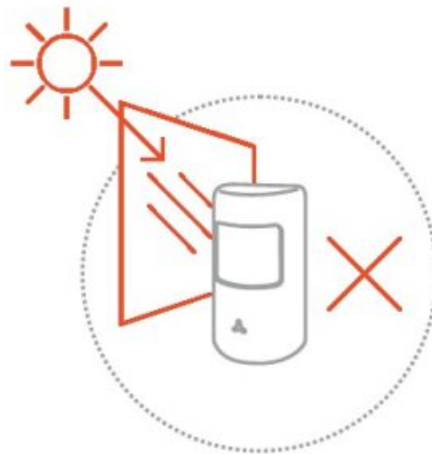
1. Remove the back cover from the sensor and pull out the battery tabs. Then replace the cover
2. Ensure the area that the sensor will be located is clean and free from dust and moisture. Avoid mounting the sensors in areas with lots of metal or electrical wiring
3. Use the adhesive strip to carefully mount the sensor onto the door/window frame
4. Mount the magnet onto the door/window no more than 1cm from the sensor



**Walk Test:** Walk across the detection area and watch the LED indicator – it will flash once when movement is detected. The sensor will detect once every minute.

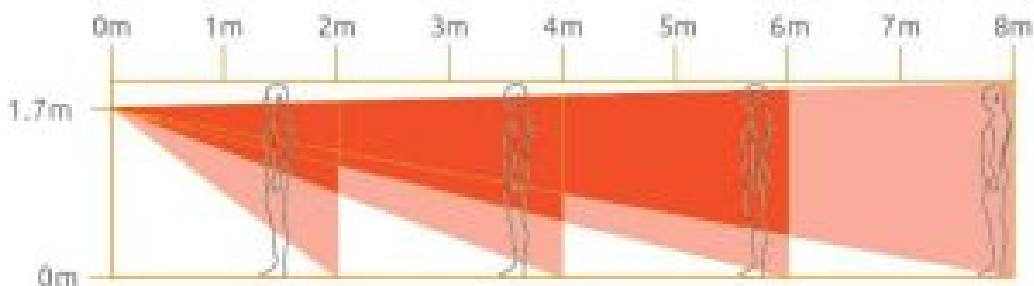
**Please note:**

Avoid mounting the sensor close to heaters, radiators, or air conditioning units. Avoid facing the sensors towards windows which could interfere with the infrared.



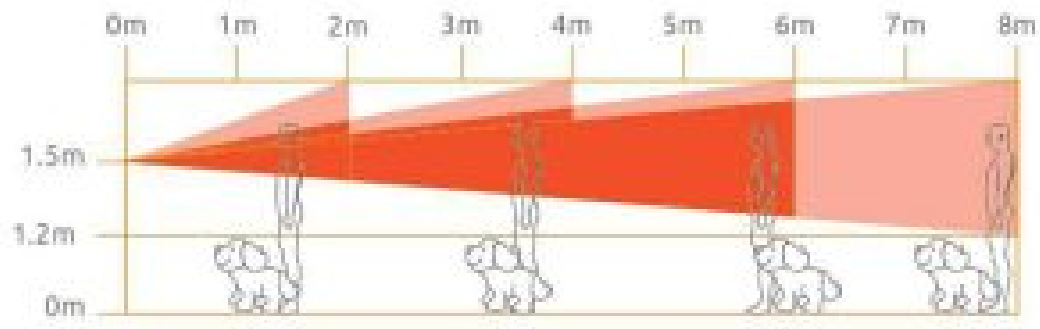
**Normal Mode**

We recommend mounting the sensor at approximately 1.7metres from ground level. The motion detection area is 90° with an 8metre range.



**Pet-Friendly Mode**

If you are a pet owner, we recommend mounting the sensor at approximately 1.5metres from ground level. Ensure the sensor is installed with the motion detection window at the bottom.



## Specification:

Power supply: DC 1.5V/AA battery

Standby current: <25 $\mu$ A

Alarm current: <70mA

Transmitting distance: <150m (in open area)

Wireless RF frequency: FHSS/433MHz

Working temperature: -10°C – 55°C

Humidity: Up to 80% (non-condensing)

Detector dimension (L/W/H): 24.5 x 96.5 x 19.55 mm

Magnet dimension (L/W/H): 14 x 48 x 11 mm

## Documents / Resources

<p><b>Motion &amp; Door + Window Sensor User Guide</b></p> <p>The combined motion &amp; door/window sensor can be installed on doors, windows or walls. The sensor transmits a signal to the host unit when the door or window is opened or when movement is detected, triggering an alarm.</p> <p><b>Features</b></p> <ul style="list-style-type: none"> <li>1. Motion detection</li> <li>2. Tamper</li> <li>3. Tamper alarm</li> <li>4. Motion sensor</li> <li>5. Battery replacement</li> </ul> <p><b>Tamper alarm</b></p> <p>When the sensor attempts to remove or damage the sensor, a tamper alarm is triggered and the user is notified immediately.</p> <p><b>Working status</b></p> <ul style="list-style-type: none"> <li>LED Red light on: Door or window has been opened. Alarm has been triggered.</li> <li>LED Red light on 2 seconds: Low battery indication. Replace battery immediately.</li> </ul>	<p><a href="#">Time2 Motion &amp; Door + Window Sensor [pdf] User Guide</a></p> <p>Time2, Motion, Door, Window, Sensor</p>
--	--