




## timberk T-HB42F01 Blender Instruction Manual

[Home](#) » [TIMBERK](#) » timberk T-HB42F01 Blender Instruction Manual 

### timberk T-HB42F01 Blender Instruction Manual



#### **Dear customer!**

We thank you for your wise choice and for a purchase of this timberk blender. It will serve you for a long time.

## Contents

- 1 IMPORTANT INFORMATION
- 2 PRECAUTIONS
- 3 DESIGNATION
- 4 SPECIFICATIONS
- 5 DESCRIPTION OF THE DEVICE
- 6 DELIVERY SET
- 7 BEGINNING
- 8 OPERATION
- 9 CLEANING AND CARE
- 10 STORAGE
- 11 UTILIZATION RULES
- 12 Documents / Resources
  - 12.1 References
- 13 Related Posts

## IMPORTANT INFORMATION

Please, read this manual before using the device. This manual contains important information regarding your safety, as well as recommendations concerning the correct use and maintenance of this appliance. Keep this manual together with a warranty card, cash register receipt and, if possible, carton and packaging material. This instruction manual describes different types of this device. The device you purchased may differ slightly from the description in the manual, which does not affect the methods of use and operation. The manufacturer reserves the right to make minor changes to the device without additional notice which is not fundamentally affect its safety, performance and functionality. There may be some misprints in text and digital notations in the present manual.

### IMPORTANT!

Important safeguards and descriptions contained in this manual do not include all possible situations that you may experience using the device. The manufacturer is not responsible for damage of the appliance or its parts during transportation, as a result of incorrect installation or voltage fluctuations, as well as when any part of the appliance has been changed or modified.

### NOTE

There is a label on the device which has all the necessary technical data and other useful information about the device. Use the appliance only for the purpose specified in this manual.

## PRECAUTIONS

When using the blender, please observe the following precautions. Improper operation while ignoring these precautions can result in an injury to the user and others, as well as damage to their property.

1. Please read these operating instructions carefully before connecting your blender to the power supply, in order to avoid damage due to incorrect use.
2. Before the first switching on check that the voltage indicated on the rating label corresponds to the mains voltage in your house.
3. Incorrect operation and improper handling can lead to malfunction of the appliance and injuries to the user.
4. The appliance is intended for use only in domestic aims. The unit is not intended for industrial and commercial use, and also for use in: kitchen area for the stuff of shops, offices and the other industrial places farm houses hotels, motels, rest homes and other similar places by residents.
5. Do not use outdoors or in damp area.

6. Always unplug the appliance from the power supply before cleaning and when not in use.
7. To prevent risk of electric shock and fire, do not immerse the appliance in water or any other liquids.
8. The appliance is not intended for use for physically, sensory or mental disabled person (including children) or for person with lack of life experience or knowledge, if only they are under supervision or have been instructed about the use of the unit by responsible person.
9. Appliances can be used by persons with reduced physical, sensory or mental capabilities or lack of experience and knowledge if they have been given supervision or instruction concerning use of the appliance in a safe way and if they understand the hazards involved.
10. This appliance shall not be used by children. Keep the appliance and its cord out of reach of children.
11. Children must be under control in order not to be allowed to play with the appliance.
12. Do not leave the appliance switched on when not in use.
13. Do not use other attachments than those supplied.
14. In case of power cord is damaged, its replacement should be done by the manufacture or service department or the other high-skill person to avoid any danger.
15. Keep the cord away from sharp edges and hot surfaces.
16. Do not pull, twist, or wrap the power cord around the appliance.
17. When you have finished, before extracting the products and tips, unplug the appliance and wait until the motor.
18. **WARNING:** The blades are extremely sharp and therefore dangerous. Handle with caution!
19. **WARNING:** It is prohibited to overfill the unit or use it without ingredients. Do not exceed the continuous operating time.
20. Never place hot ingredients into the bowl(> 70 °C).
21. Do not attempt to repair, adjust or replace parts in the appliance. Repair the malfunctioning appliance in the nearest service center.
22. If the product has been exposed to temperatures below 0°C for some time it should be kept at room temperature for at least 2 hours before turning it on.
23. The manufacturer reserves the right to introduce minor changes into the product design without prior notice, unless such changes influence significantly the product safety, performance, and functions.
24. Manufacturing date is indicated on the unit and/or on packing as well as in accompanying documents in the following format XX.XXXX where first two figures XX is the month of production, and following four figures XXXX is the year of production.

## DESIGNATION

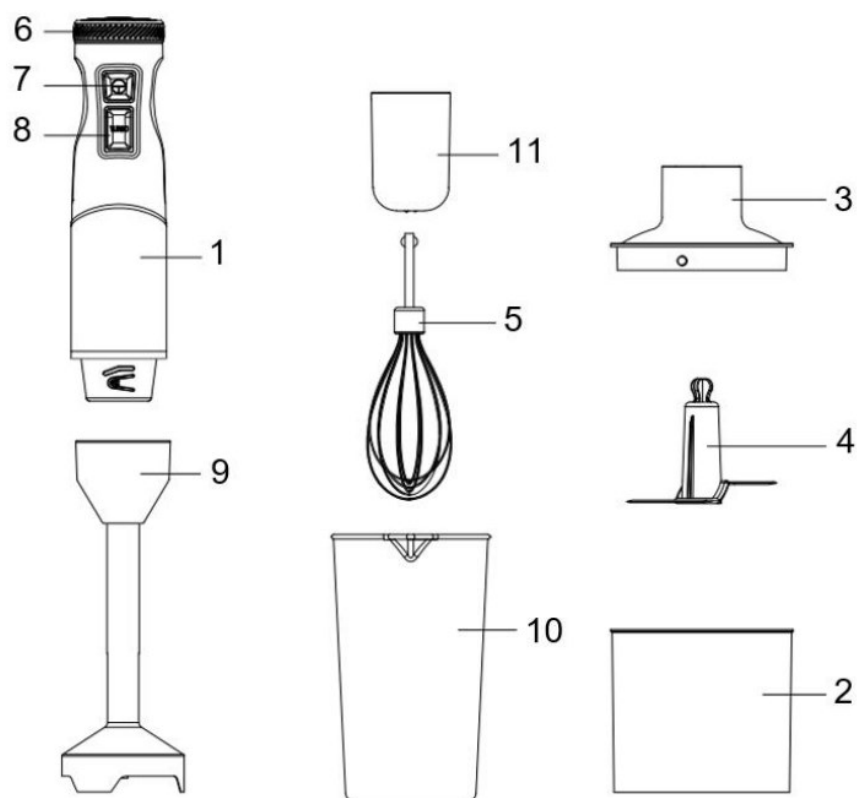
This appliance is perfect for making soups, purées, various sauces, gravies, baby food, as well as for mixing a variety of cocktails. The beater attachment will help in the preparation of various desserts. The chopper is ideal for herbs, vegetables, cheese, meat and most varieties of nuts.

## SPECIFICATIONS

Specifications of the device are shown in Table 1.

Parameter	Unit	T-HB42F01
Power supply	V/Hz	220-240~/50
Maximum power	W	1500
Nominal power	W	600
Speed modes number	–	9
TURBO mode	–	+
Blender attachment	–	+
Chopper	l	0.5
Whisk for fluffing	–	0.7
Beaker	l	0.5
Electrical protection class	–	Class II
Net weight	kg	1.1
Device dimensions	mm	66x66x376

## DESCRIPTION OF THE DEVICE



1. Motor unit
2. Bowl (500 ml)
3. Bowl drive shaft
4. Chopper/grinder.
5. Whisk stick
6. Variable speed control switch

7. Pulse button
8. TURBO button
9. Hand blender
10. Measuring cup (700 ml)
11. Accessory adapter

\* The picture is for reference only and may differ from the actual product

## **DELIVERY SET**

1. Motor part – 1 pc.
2. Blender attachment – 1 pc.
3. Whisk attachment – 1 pc.
4. Chopper – 1 pc.
5. Measuring cup – 1 pc.
6. Chopper bowl – 1 pc.
7. Bowl drive shaft – 1 pc.
8. Warranty card – 1 pc.
9. Instruction manual – 1 pc.
10. Packaging – 1 pc.

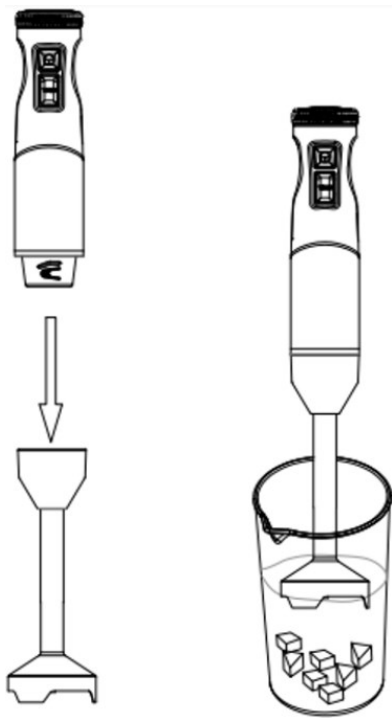
## **BEGINNING**

- Prior to initial use wash all removable parts with warm water with cleansing agent and dry up carefully. Wipe the outside of the motor base with moist tissue.
- It is strongly prohibited to immerse the motor base into any liquids and/or to clean it with water.

## **OPERATION**

### **IMMERSION BLENDER**

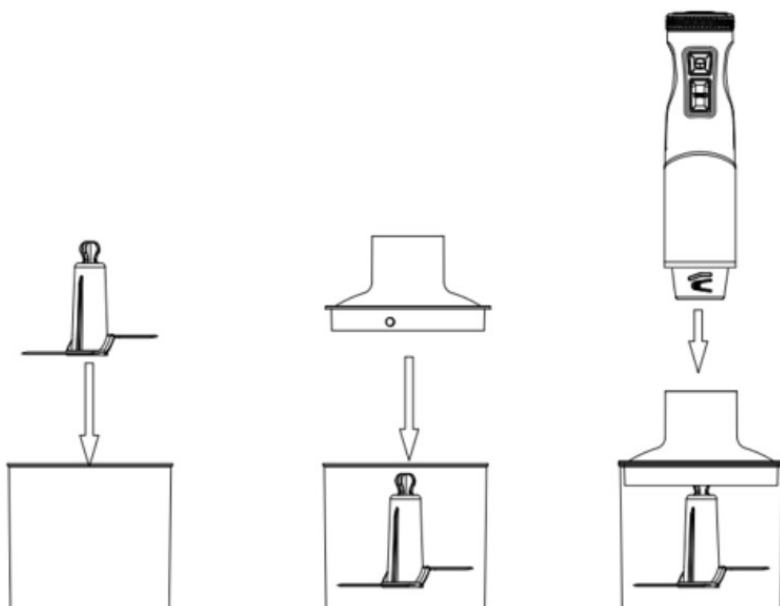
- Place the immersion blender on the motor base.



- To prevent splashing, immerse the blender into products to be blended prior to switching it.

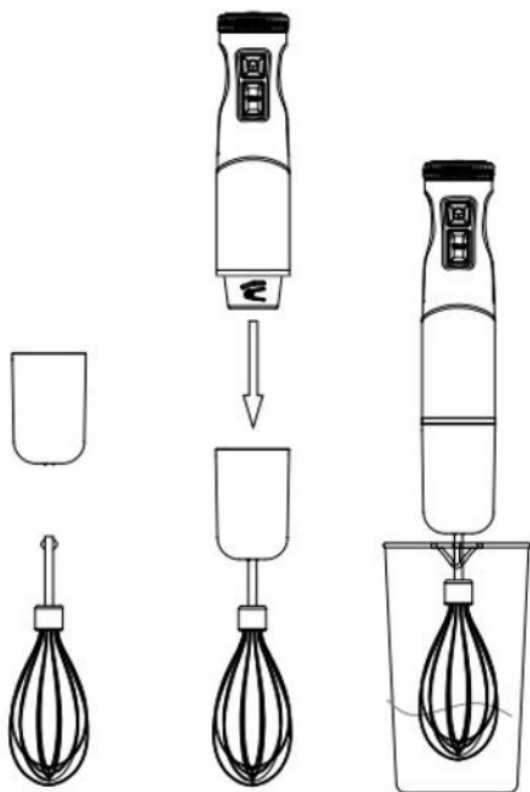
## CHOPPER

1. Hard products, such as meat, onion, carrots, need to be cut before processing. Nutshells must be removed, meat must be separated from bones and tendons.
2. **Caution!** The chopping blade is very sharp! Hold the blade by the top plastic area only!
3. Place the blade on the central finger in the jar.
4. Add ingredients into the jar.
5. Cover the jar with the drive. Place the motor base into the jar drive until tightened.
6. While chopping, hold the motor base with one hand, accessory jar – with the other hand.
7. When finished, remove the motor base first. Then remove the jar drive.
8. Remove the blade carefully.
9. At this point you may remove chopped ingredients from the jar.



## ACCESSORY FOR WHISKING / LIQUID PRODUCTS BLENDING

- Use the whisk for creaming, egg beating, desserts blending. Never use this accessory for kneading.
- Insert the accessory into adapter and place them on the motor base.
- Prior to start processing, immerse the whisk into the jar with ingredients. Start processing at low speed.

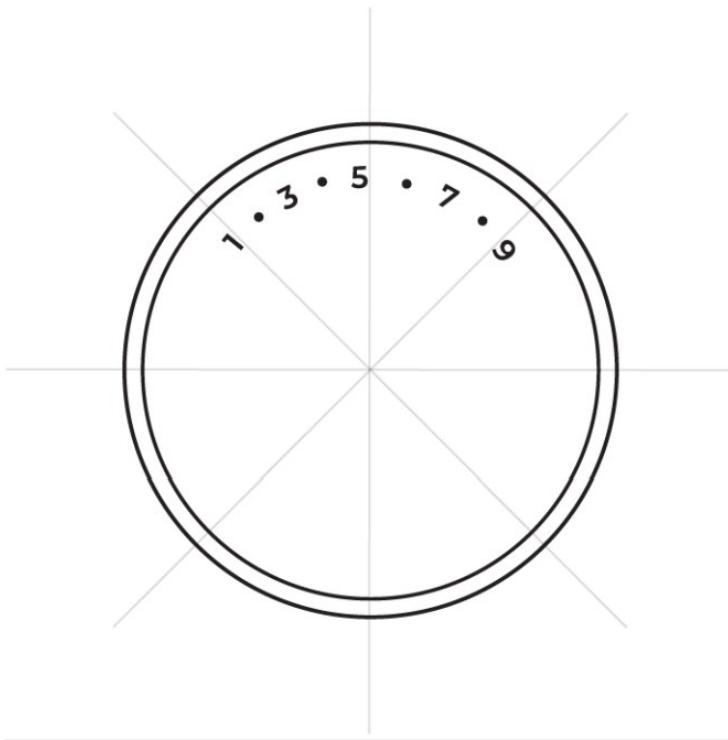


### Operation

- Make sure you have assembled the unit completely and in a proper way.
- Plug the unit to power supply.
- Select the desired speed with the switch.
- The blender is equipped with “TURBO” mode. Press and hold TURBO button to increase the power in maximum. To return to normal speed, release the button.

### Speed modes

This device has the speed mode knob on the upper part of the body. Choose the desired speed, according to the hardness of the product.



## PULSE MODE

- Press and hold the pulse button. The unit will operate while the button is held pressed.

**NOTE:** continuous operation time of the processor must not exceed 1 minute, rest time between operations must be at least 4 minutes (for chopper 0.5 min / 3 min).

- It is strongly prohibited to remove any of accessories while the unit is operating.

## CLEANING AND CARE

- Switch off and unplug the appliance.
- Wash the accessories immediately and avoid soaking them in water for long periods; wash in warm sudsy water after each use. Dry all accessories with a clean soft cloth.
- Wipe the housing with a damp cloth.
- Do not use scouring pads, abrasive and harsh detergents

## STORAGE

- Be sure that the appliance is unplugged.
- Complete all requirements of Chapter CLEANING AND CARE.
- Keep the appliance in a dry clean place.

## UTILIZATION RULES



The symbol on the unit, packing materials and/or documentations means used electrical and electronic units should not be tossed in the garbage with ordinary household garbage. These units should be passed to special



receiving point. For additional information about actual system of the garbage collection, address to the local authority. Valid utilization will help to save valuable resources and avoid negative work on the public health and environment which happens with incorrect using garbage. After the lifetime of the device expires, it should be recycled in compliance with the laws, rules and methods in region of recycling. Detailed information about the recycling of the device, you can receive from a representative of the local authorities, after providing full information about the device. The manufacturer and authorized organization of the manufacturer do not carry responsibility for the fulfillment by the Buyer of the requirements of legislation on utilization and methods of utilization of the device selected by the Buyer. The lifetime of the device is indicated in the warranty card. Warranty period for the device and warranty terms are specified in the warranty card. The warranty card is an integral part of the documentation supplied with this unit. If there is no warranty card in the delivery set, ask for it from the Seller. The warranty card provided by the Seller must conform to the manufacturer's form. The manufacturer and the authorized organization of the manufacturer remove responsibility for any possible harm which can be caused to people, animals or property directly or indirectly, if this harm occurred as a result of noncompliance with the rules and operating conditions, installation of the device, intentional or reckless actions of the user- and / or third parties, as well as in situations caused by natural and / or anthropogenic accidents.

## Documents / Resources

## References

- [!\[\]\(f15d3c54be60b4fd0ce1da9fb3f67256\_img.jpg\) Timberk - Официальный сайт бренда бытовой техники](#)
- [!\[\]\(7bf135d42c40a6430c927b2fd03d7659\_img.jpg\) Dictionary](#)