



Tilvision QL-G001 Fingerprint Door Lock Instruction Manual

[Home](#) » [Tilvision](#) » Tilvision QL-G001 Fingerprint Door Lock Instruction Manual 

Tilvision QL-G001 Fingerprint Door Lock



Contents

- [1 What's included?](#)
- [2 Name for parts](#)
- [3 Prepare Door before Installation](#)
- [4 How to install smart lock](#)
- [5 Device settings](#)
- [6 How to use smart lock](#)
- [7 Specifications](#)
- [8 CUSTOMER SUPPORT](#)
- [9 Documents / Resources](#)
- [9.1 References](#)

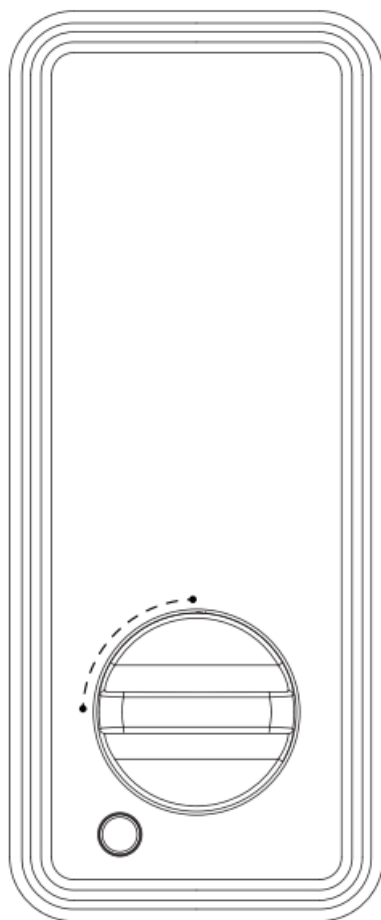
What's included?

It is very important to install and operate this product according to the following instructions. Failure to do so may render your guarantee void.

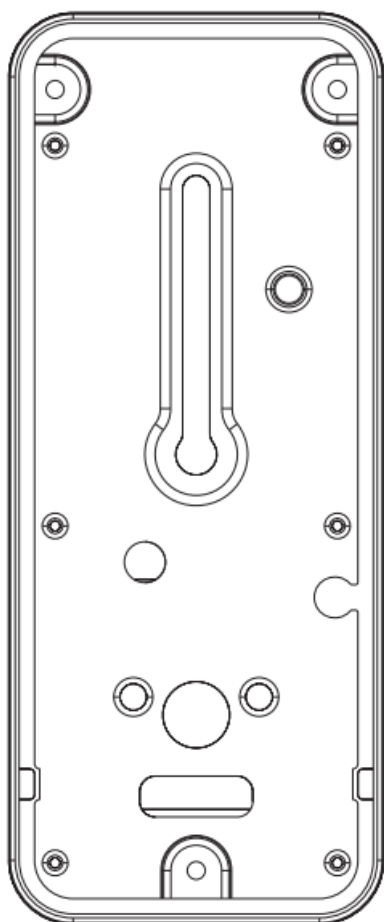
- Exterior assembly



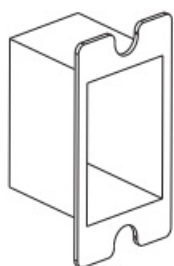
- Interior assembly



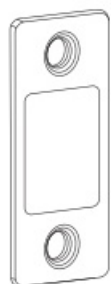
- Mounting plate



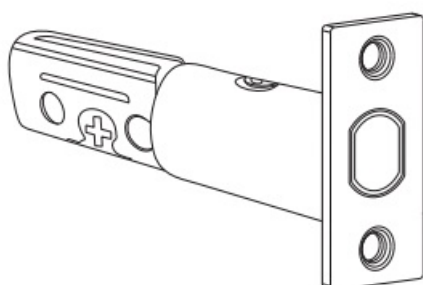
- Strike box



- Strike plate



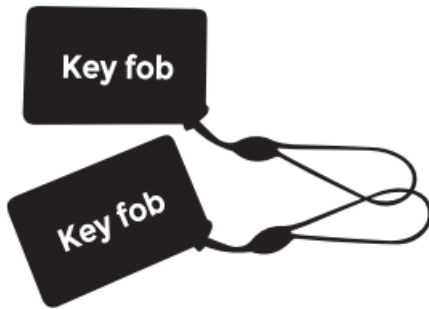
- Deadbolt



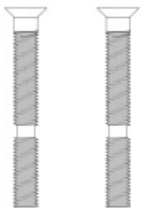
- Mechanical keys



- Key fob



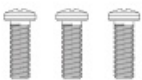
- Long mounting plate screws



- Short mounting plate screw



- Interior assembly screw



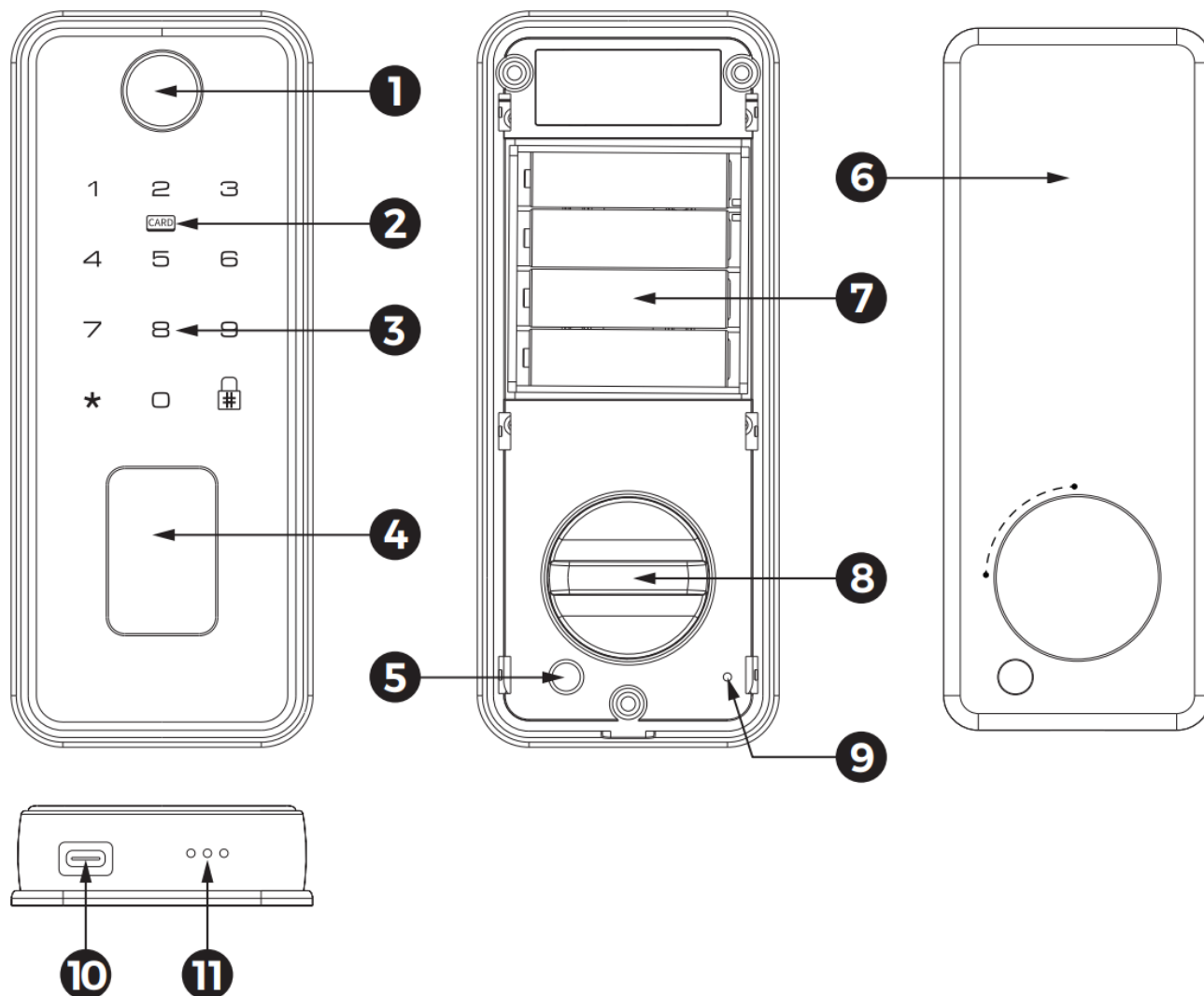
- Deadbolt / Strike screws



Name for parts

1. Fingerprint scanner
2. Key fob reading area
3. Keypad
4. Cylinder & Cylinder cover
5. Locked inside on / off

6. Battery cover
7. Battery compartment
8. Thumbturn
9. Reset button
10. Type C port
11. Speaker



Prepare Door before Installation

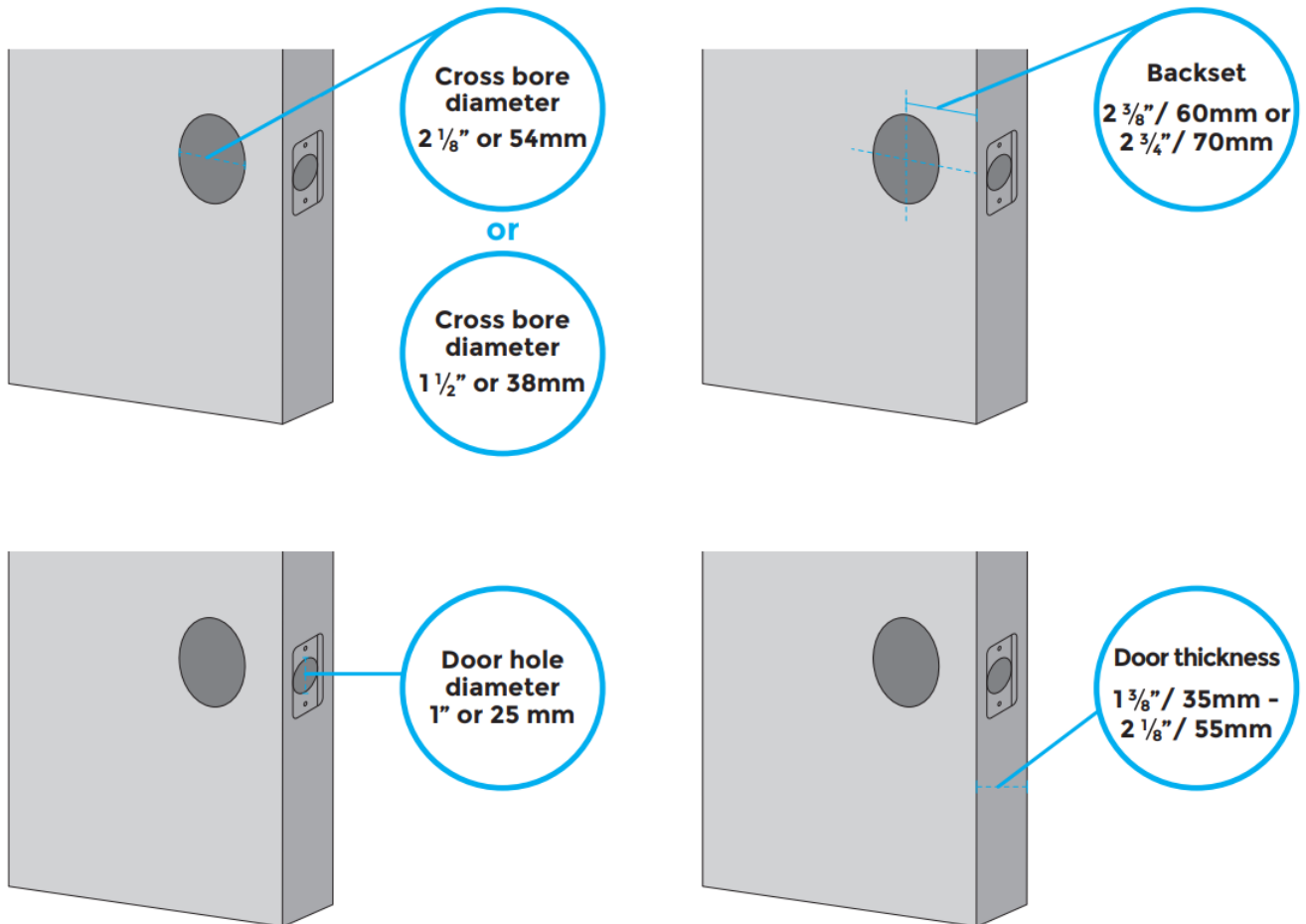
Make sure the following criteria are met so that the Smart Lock can be installed properly :

- Check the door status, make sure the door frame is aligned with the door.
- There are no obstructions stuck in the door frame.
- Leave enough space for the deadbolt to extend into the door frame when the door is locked.

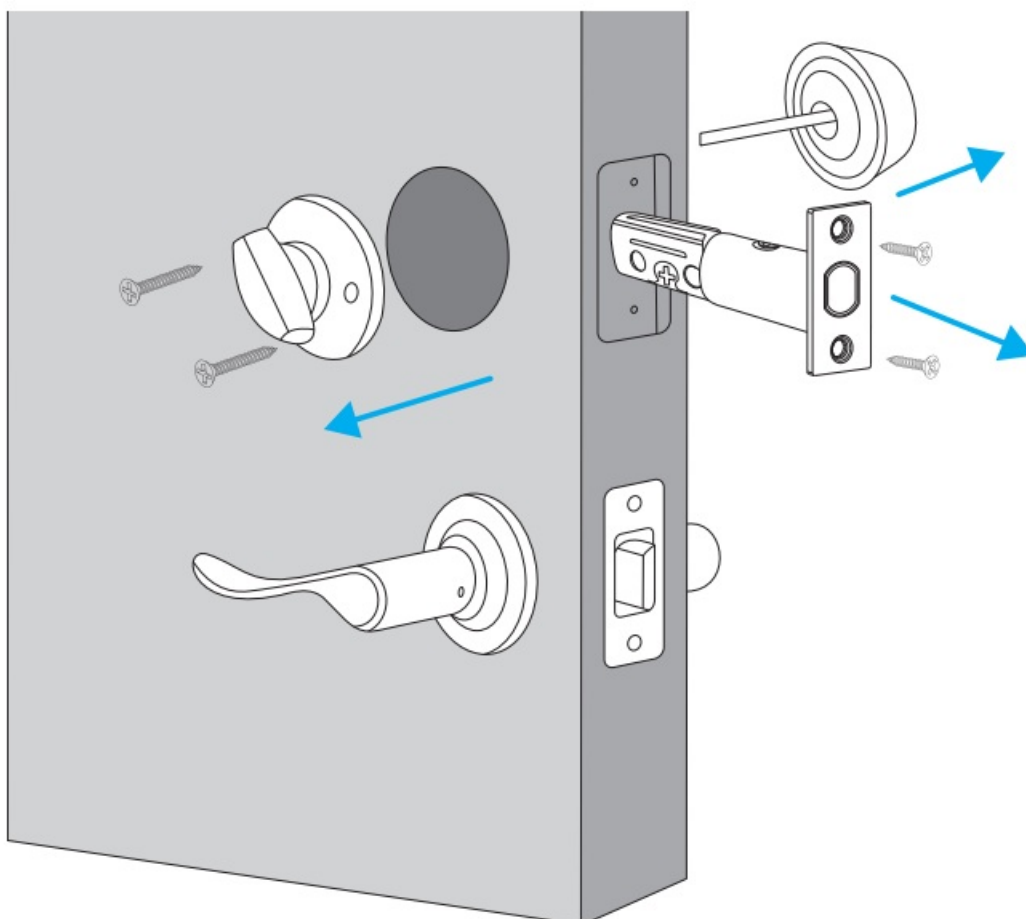
Check the door / frame dimensions to make sure they fit the following measurements before installation:

- The cross bore diameter (2 " / 54mm or 1 " / 38mm)
- Backset (2 " / 60mm or 2 " / 70mm)
- Diameter of the door hole (1" / 25mm). The door hole center and cross bore center should be aligned at the same horizontal level.

- Door thickness (1 " / 35mm – 2 " / 55mm)



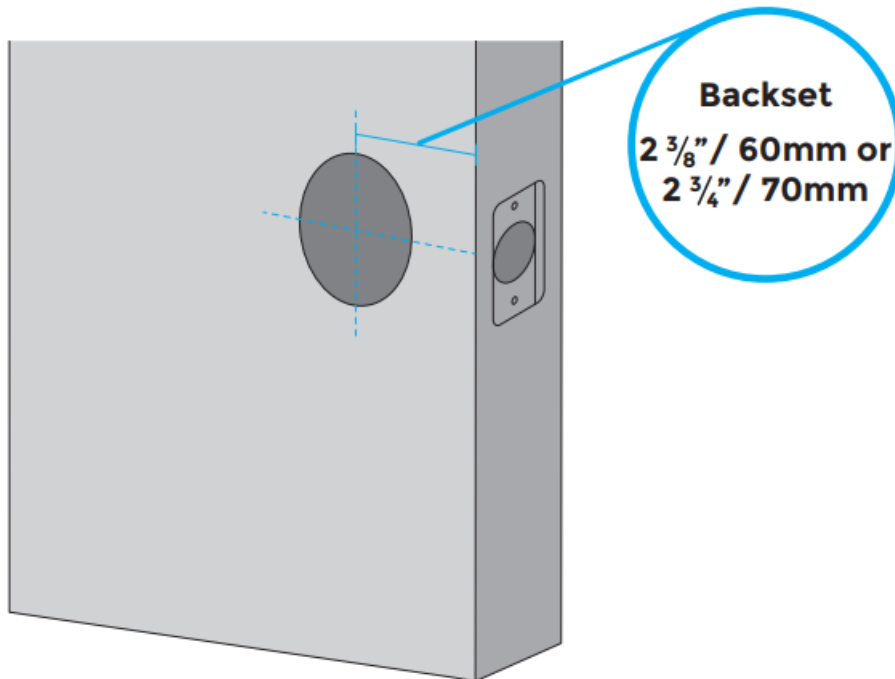
If you already have an existing lock, please remove it including the deadbolt.



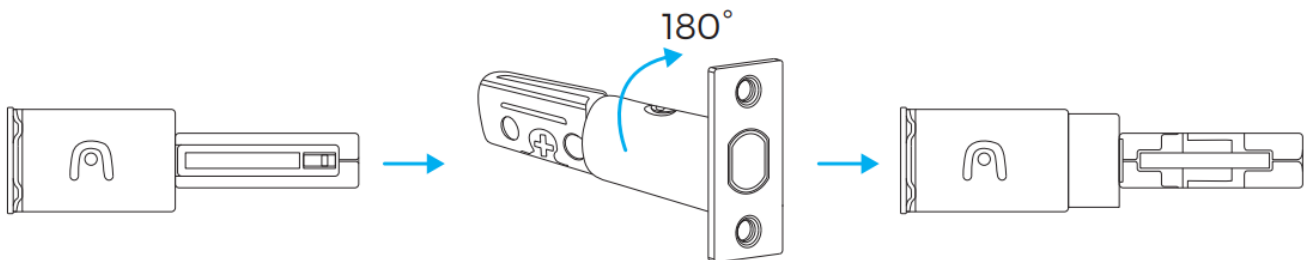
How to install smart lock

Step 1: Install the Deadbolt

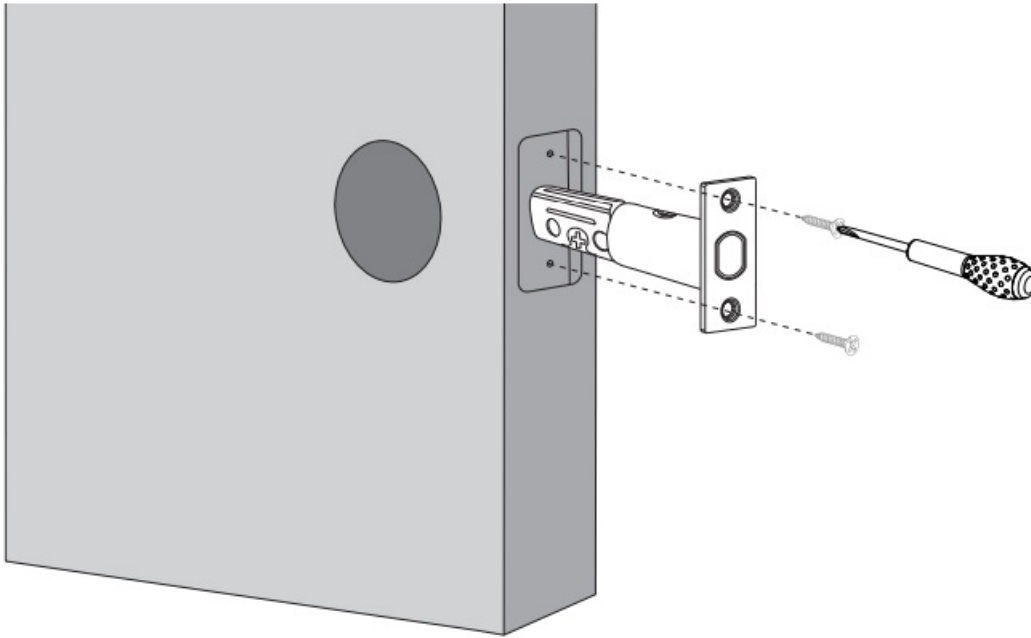
1. Measure your door's backset dimension: whether it is 2 " / 70 mm or 2 " / 60 mm.



2. If your door's backset dimension is 2 " / 60 mm, use the provided deadbolt to install. If your door's backset is 2 " / 70 mm, turn the faceplate 180° and pull to extend simultaneously until the deadbolt locks in position as the illustration shows below.



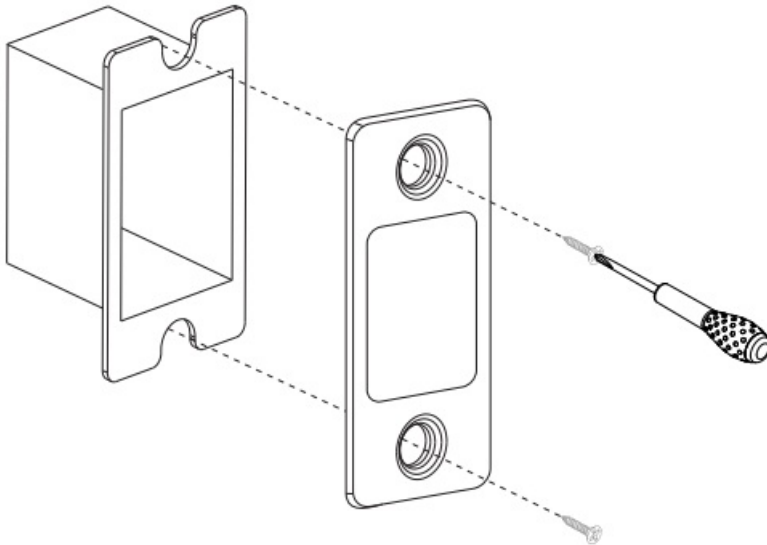
3. Insert the deadbolt into the doorframe and make sure the word "TOP" faces up as indicated on the deadbolt.
4. Screw into the doorframe with a screwdriver (not provided).



Step 2: Install Strike Box and Strike Plate

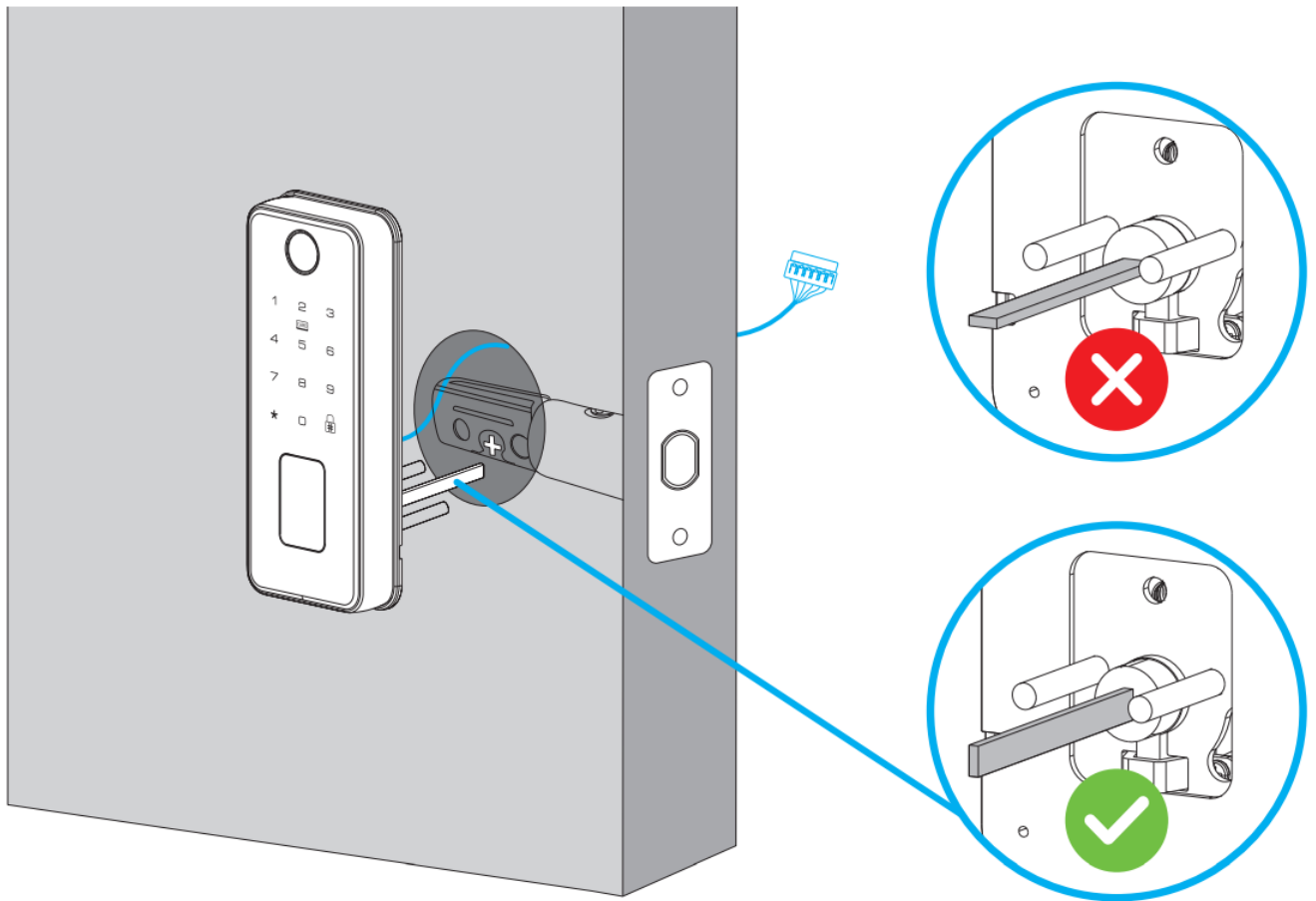
If you have an existing strike plate or strike box installed, skip this step.

1. Align the strike box with the center hole of the deadbolt.
2. Secure the strike box with strike plate and strike screws. Make sure it's placed in the correct direction.



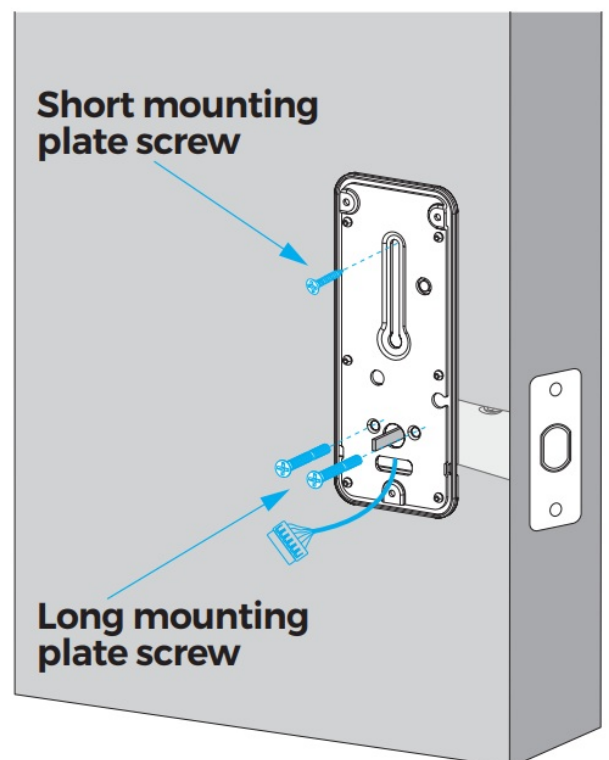
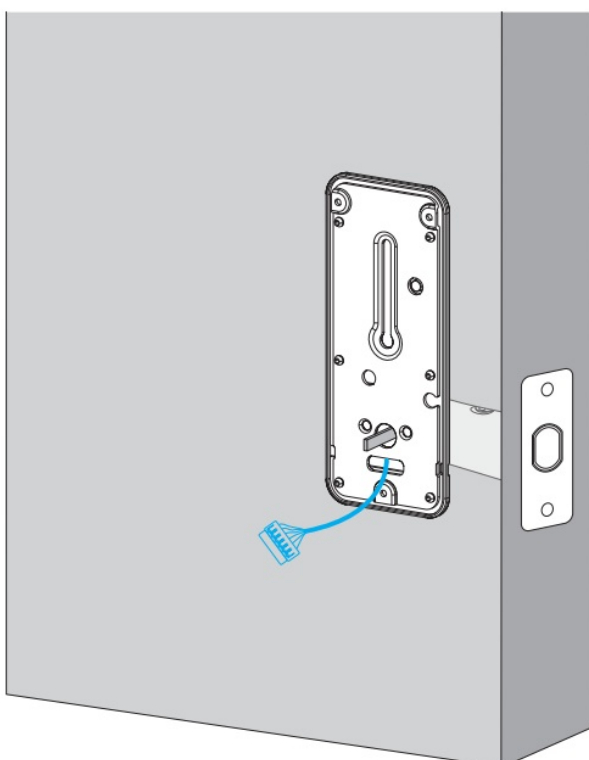
Step 3: Install the Exterior Assembly

1. Route the cable connected on the exterior assembly under the deadbolt.
2. Keep the tailpiece in vertical position and insert it into the center hole of the deadbolt.



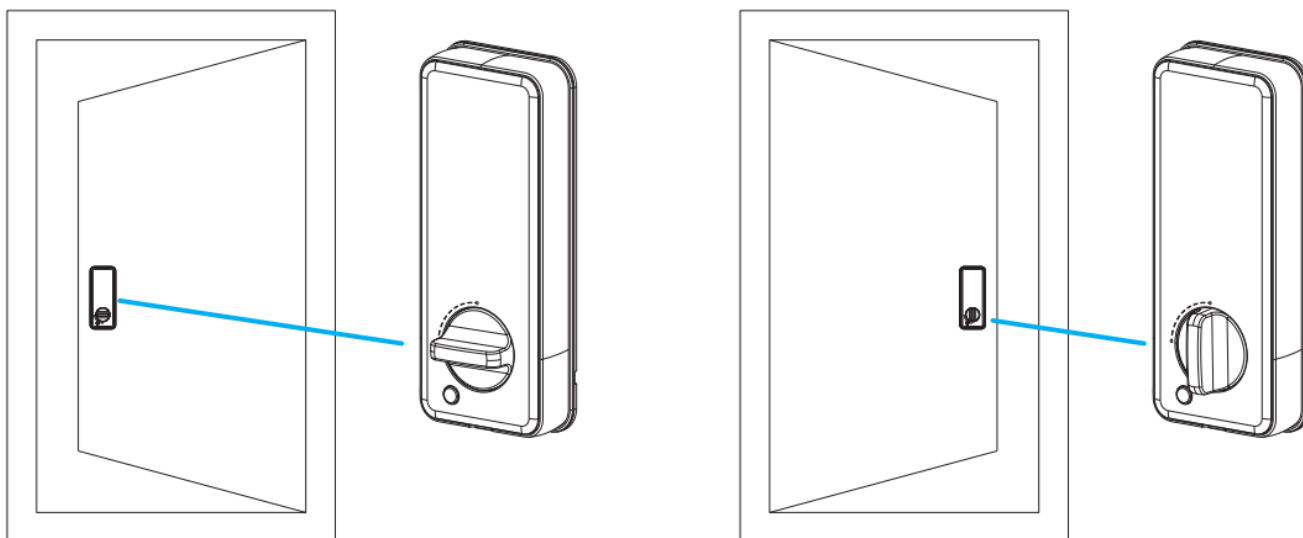
Step 4: Install the Mounting Plate

1. Route the cable through the mounting plate.
2. Fix the mounting plate onto the interior doorframes with the mounting plate screws. Make sure the long mounting plate screws go through the mounting plate and lock into the connecting pillars of the exterior assembly.

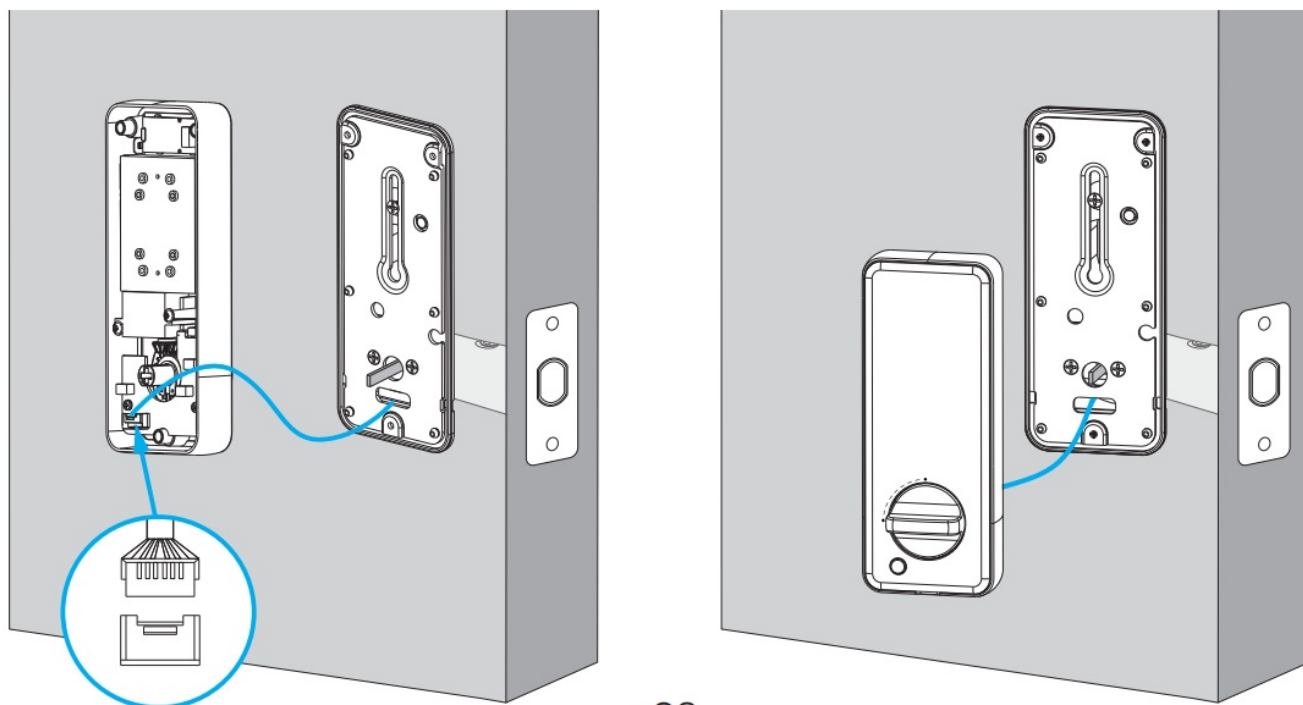


Step 5: Install the Interior Assembly

1. Check your existing door in the left or right and then turn the thumbturn in position as the illustration shows below.

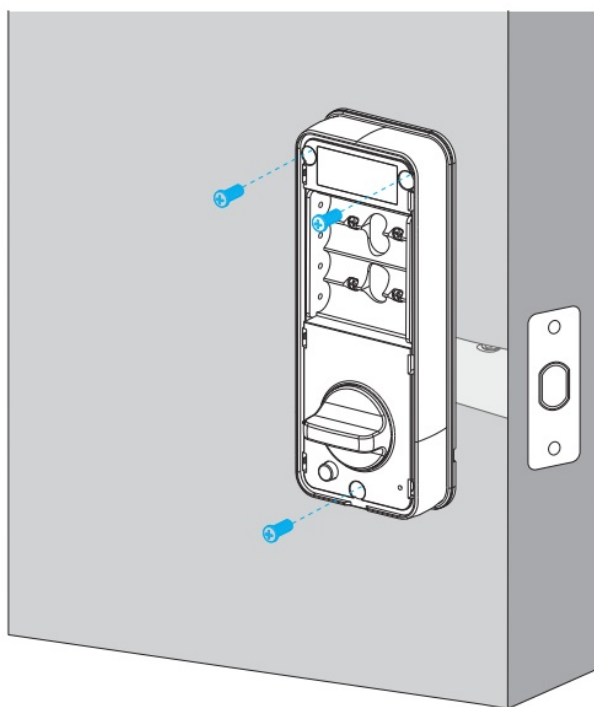
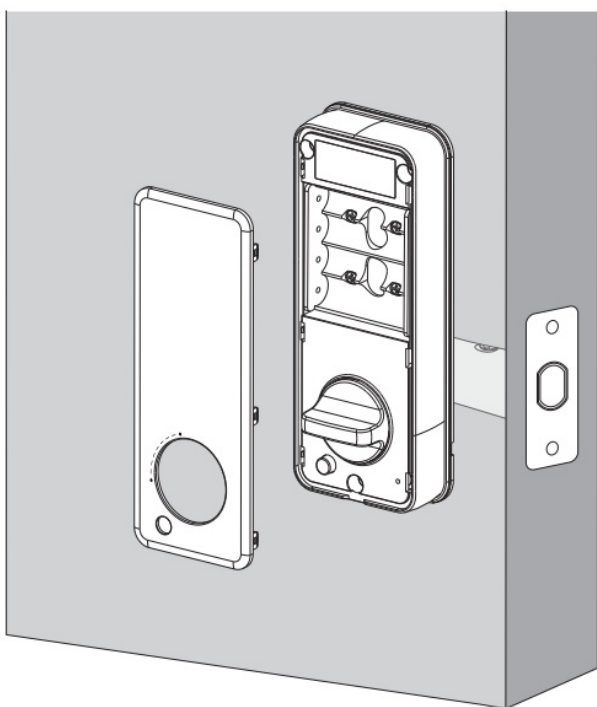


2. Match the wire connector from the circuit board with the one from the exterior assembly as illustrated. The wire connector can only be plugged into the socket in one way. Make sure you match the dot on the connector with the pin on the circuit board correctly.
3. Secure the tailpiece with the key cylinder. Put the cable inside the cross bore as much as possible, otherwise its exposure will cause inconvenience to the interior assembly installation.

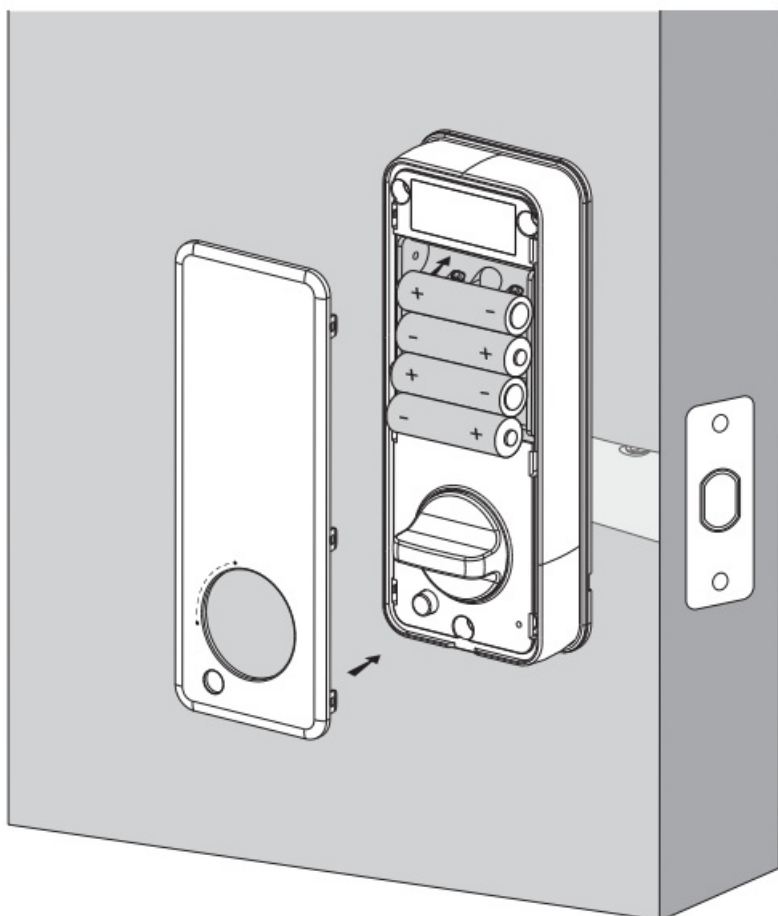


- 08 -

4. Remove the battery cover.
5. Secure the provided screws into the interior assembly.



6. Turn the thumbturn to check whether the deadbolt is retracted. If the deadbolt does not work smoothly, adjust the screws and install the mounting plate again.
7. Install 4AA batteries with correct polarity and then close the battery cover.

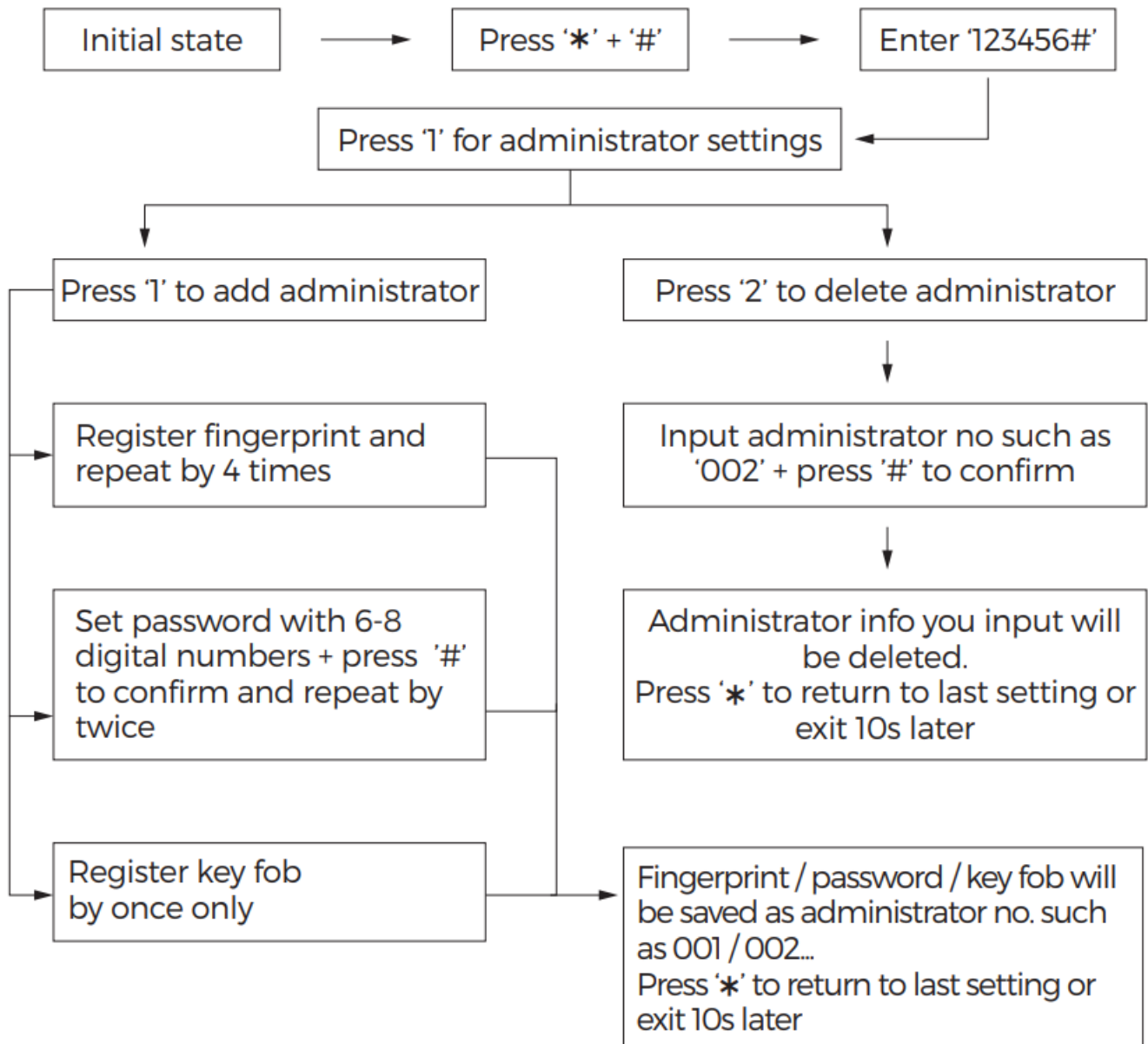


Device settings

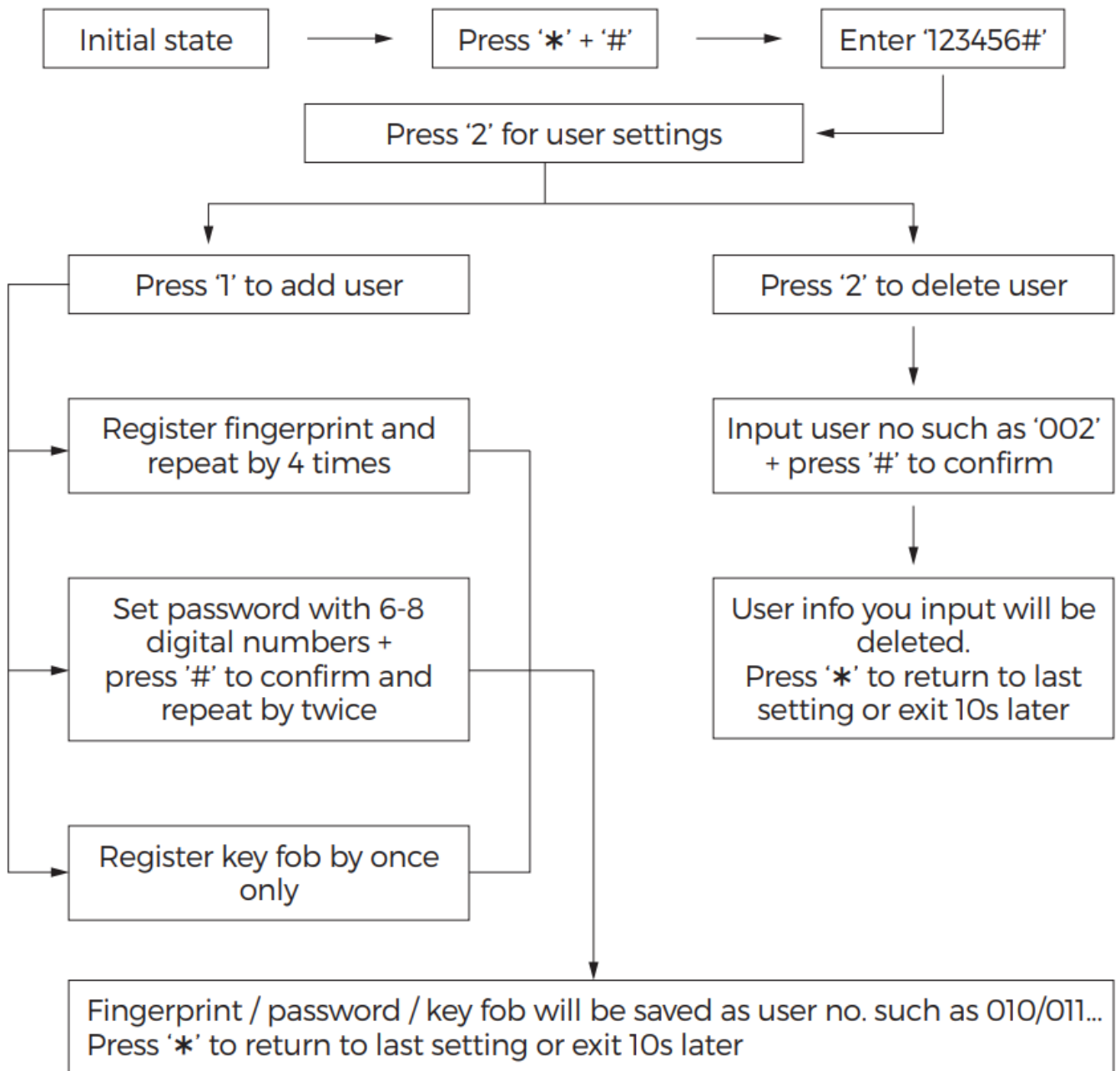
At factory default mode, press lock button '🔒', to check if the locking direction is correct. If it's incorrect, press '888#' to switch the direction.

Administrator setting

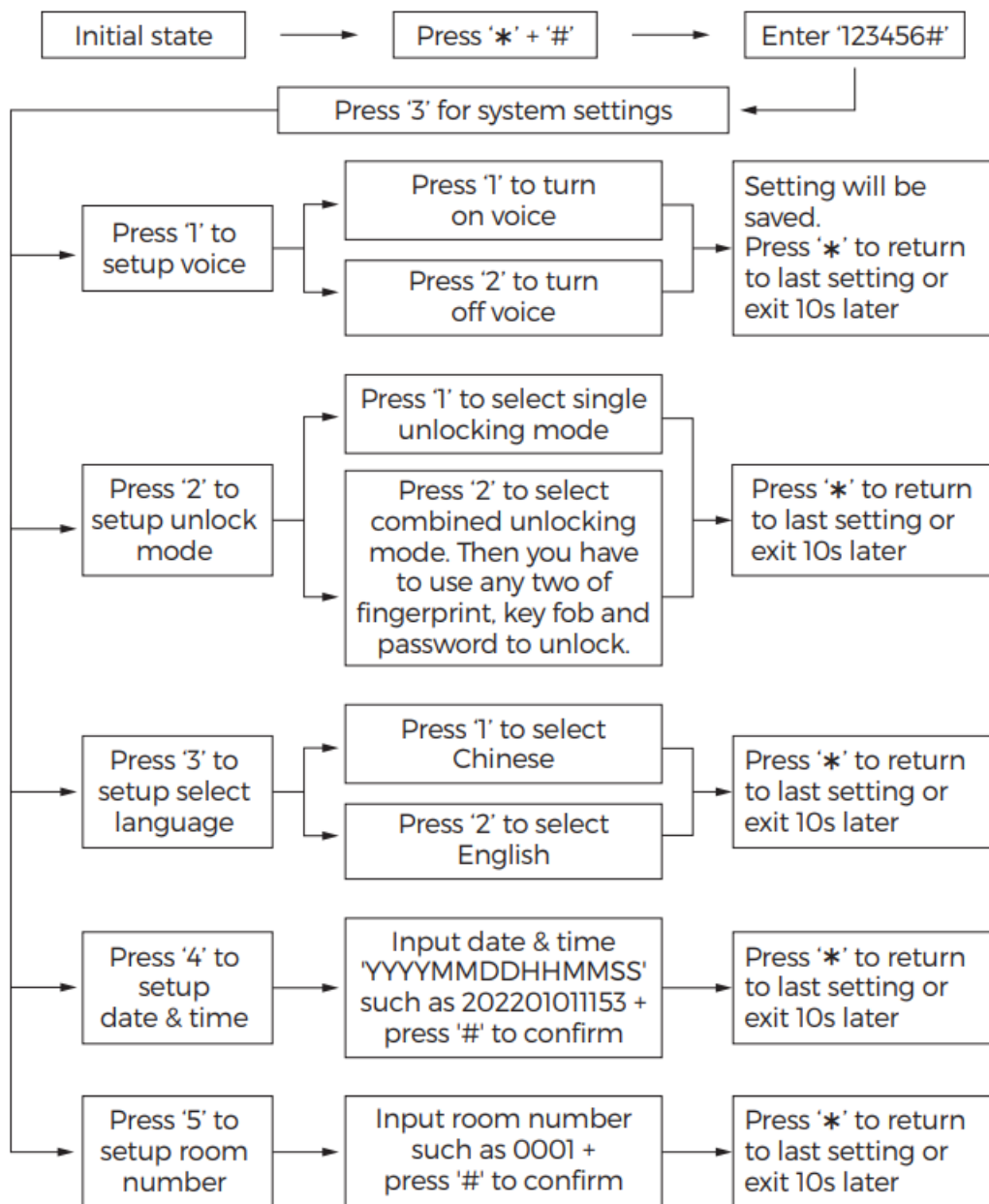
At factory default mode, the initial administrator password is '123456' and it's a must to change it following up steps as shown below.



User setting

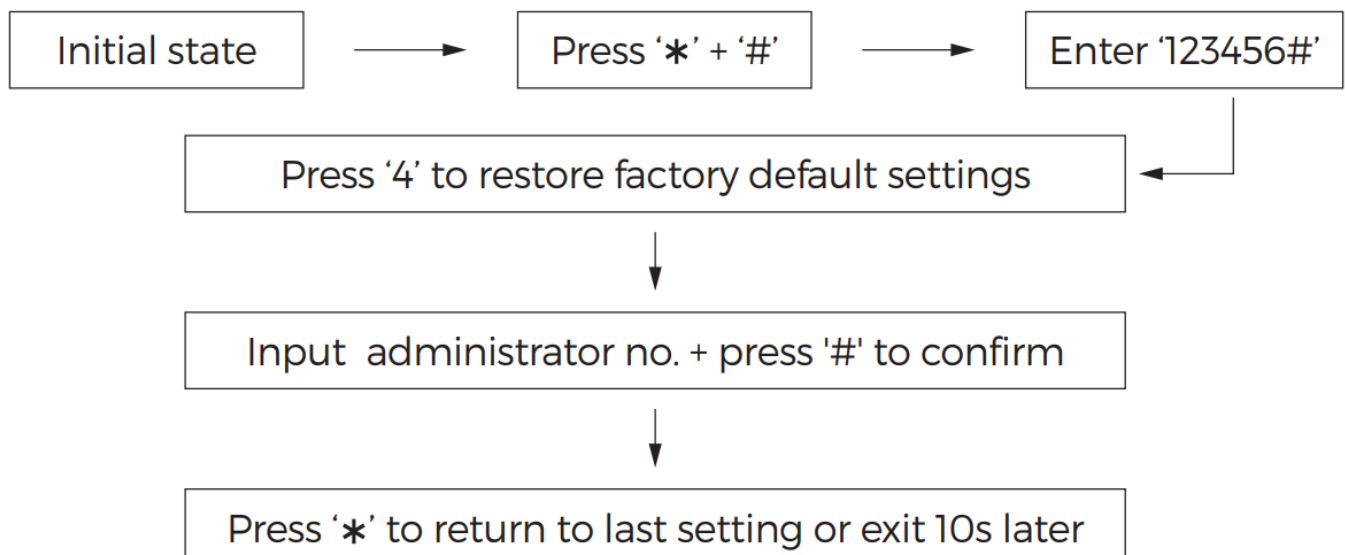


System setting



Factory default setting

Long press 'Reset' at back door or follow the steps as below.



How to use smart lock

Unlock the door

You can unlock the door using fingerprint, password, key fob, mobile app, or the provided key.

Option 1: fingerprint

Scan registered fingerprint and wait until the fingerprint breathing light breathes blue.

Option 2: password

Press any key or tap the touch panel to wake up the keypad and enter correct password to unlock the door. The system will be locked for 90 seconds if you have made more than five incorrect password attempts.

Anti-peep password is to protect your privacy, which supports up to 20-digit vague code. Just enter any 20-digit code, as long as a correct code is included in what you entered, you can open the door.

Example

User Code: 123456

Vague Code

1.

1	2	3	4	5	6	X	X	X	X	X	X
---	---	---	---	---	---	---	---	---	---	---	---
2.

X	X	X	X	X	X	1	2	3	4	5	6
---	---	---	---	---	---	---	---	---	---	---	---
3.

X	X	X	1	2	3	4	5	6	X	X	X
---	---	---	---	---	---	---	---	---	---	---	---

Option 3: key fob Swipe registered key fob on the reading field.

Option 4: mechanical keys Open the cylinder cover and use the provided mechanical keys to unlock the door.

Lock the door

At standby mode, press '' to lock the door directly

Low-power alert

Smart lock will alert you automatically when low power. You are able to unlock the door up to 200 times since you get the first alert. Please replace the batteries asap.

Locked inside on / off

Locked inside on: Only administrators and mechanical keys are able to unlock the door, while users can't.

Locked inside off: Both administrators and users are able to unlock the door.

Auto-lock

Input '555666777#' to enable Auto Lock and then the lock will relock automatically in 20s. Input '555666777#' again to disable Auto Lock. At factory default mode, it's enabled.

Alarm setting

Input '555666999#' to enable alarm and then the smart lock will sound loudly to scare the theft who wants to damage the smart lock and break in. Input '555666999#' again to disarm. At factory default mode, it's enabled.

Reset

- Long press 'Reset' at back door using phone pin until hear one short beep, wait for around 6 seconds and then press '#' to confirm it. Or,

- Refer to 'Factory default setting' on keypad.

Specifications

- **Power supply:** 4 AA batteries or 5VDC charger in an emergency
- **Standby current:** ≤50uA
- **Working current:** ≤180mA
- **Administrator qty:** Up to 10
- **Fingerprint capacity:** Up to 50
- **Fingerprint + password + key fob capacity:** Up to 250
- **Numeric keypad:** Touch buttons
- **Password length:** 6-8 digital numbers
- **Anti-peep password length:** Up to 20 digital numbers
- **Unlocking timing:** ≤1s
- **Working environment:** -25°C~60°C, 20%~90%RH
- **Material:** Aluminium ally case + tempering panel
- **Size:** 179mm x 73mm x 24mm (exterior)

CUSTOMER SUPPORT

SHENZHEN QIAOHUA INDUSTRIES LIMITED

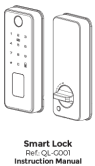
Add: Qiaohua Industrial Zone, LuoTian Forestry Center, Yan Luo, Bao An,
Shenzhen, China 518127

Customer Support: support1@tilvision.com

www.tilvision.com

Made in China

Documents / Resources

 <p>Smart Lock QL-G001 Instruction Manual</p>	<p>Tilvision QL-G001 Fingerprint Door Lock [pdf] Instruction Manual QL-G001 Fingerprint Door Lock, QL-G001, Fingerprint Door Lock, Door Lock, Lock</p>
--	--

References

- [User Manual](#)