



Tilvision HC-007 Wi-Fi Video Doorbell Camera Instruction Manual

[Home](#) » [Tilvision](#) » Tilvision HC-007 Wi-Fi Video Doorbell Camera Instruction Manual 

Contents

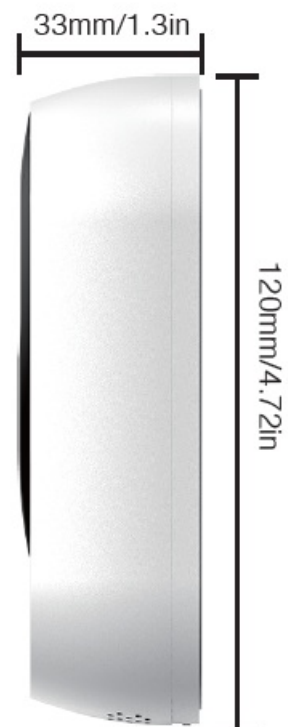
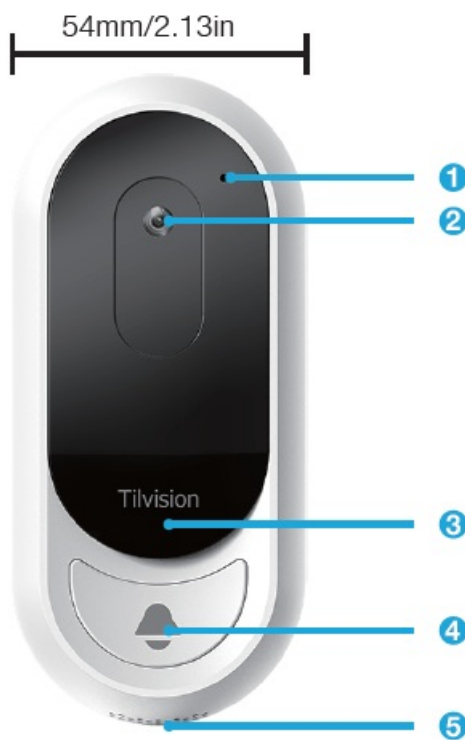
- [1 Tilvision HC-007 Wi-Fi Video Doorbell Camera](#)
- [2 Names For Parts & Product Size](#)
- [3 Product Features](#)
- [4 How to install device](#)
- [5 Where to download the app](#)
- [6 Register a new account and log in](#)
- [7 How to add device](#)
- [8 How to share devices](#)
- [9 Interface guide](#)
- [10 Specification](#)
- [11 Documents / Resources](#)
 - [11.1 References](#)
- [12 Related Posts](#)

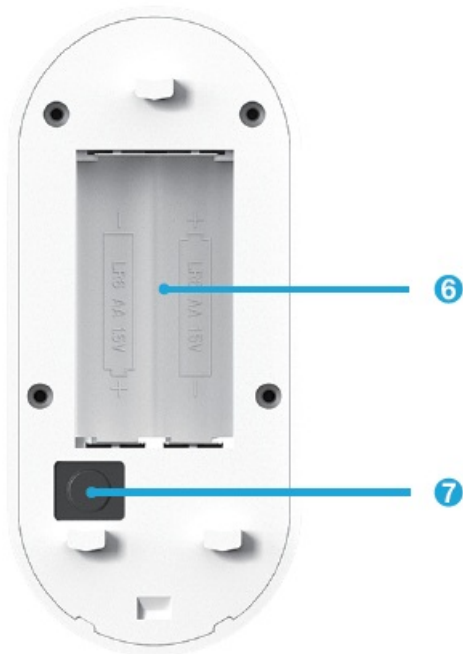
Tilvision

Tilvision HC-007 Wi-Fi Video Doorbell Camera



Names For Parts & Product Size





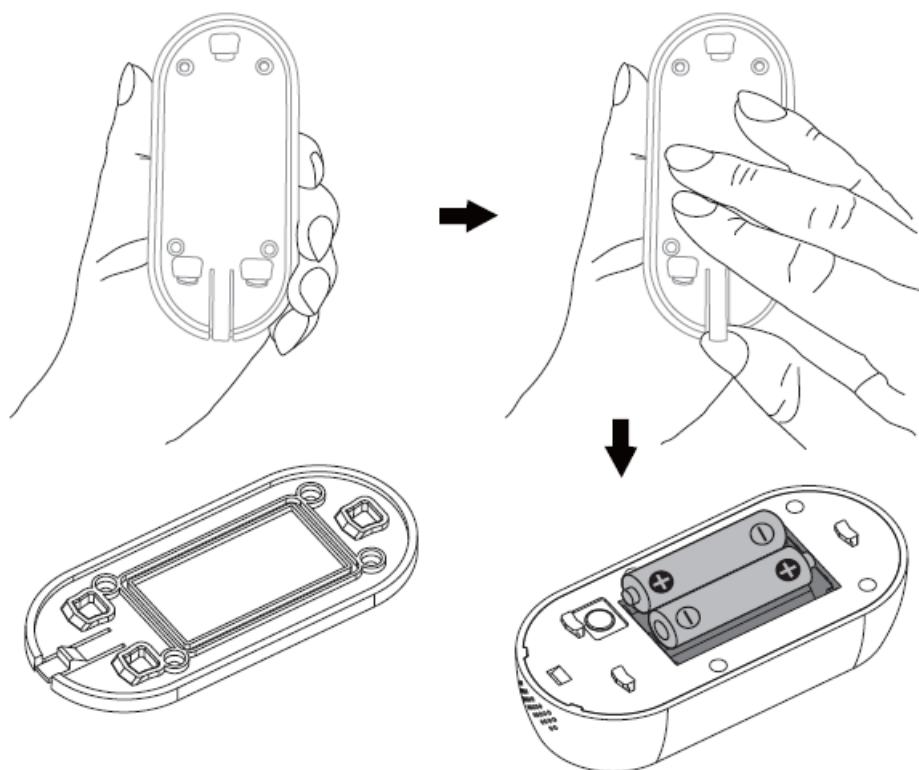
1. Mic
2. Camera
3. LED indicator
4. Calling button
5. Speaker
6. Battery compartment
7. Reset button

Product Features

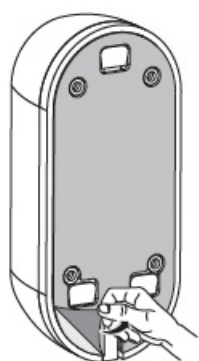
- 100% wireless & battery powered.
- Two-way audio talking with live video.
- Take a photo when the push button is pressed, the phone will get a notification too.
- Unlimited photos can be saved in a cloud server, with no monthly fees.
- Can be shared with a maximum of 8 family members(including the administrator).
- IP65 waterproof & high working temperature, suitable for outdoor use.

How to install device

1. Use a finger to push the bar toward the sky, and slide the mounting plate down, it'll be removed.

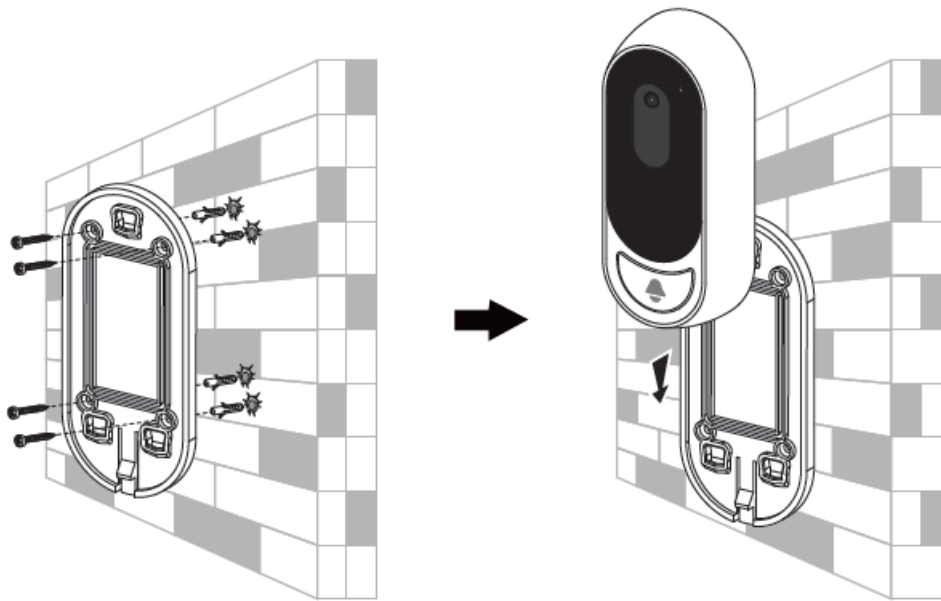


2. Fix it on a door with double-sided adhesive tape.



3. Fix the mounting plate on a wall with screws.

4. Attach the doorbell camera to the mounting plate (from top to bottom).



Where to download the app

1. Scan below QR code below.

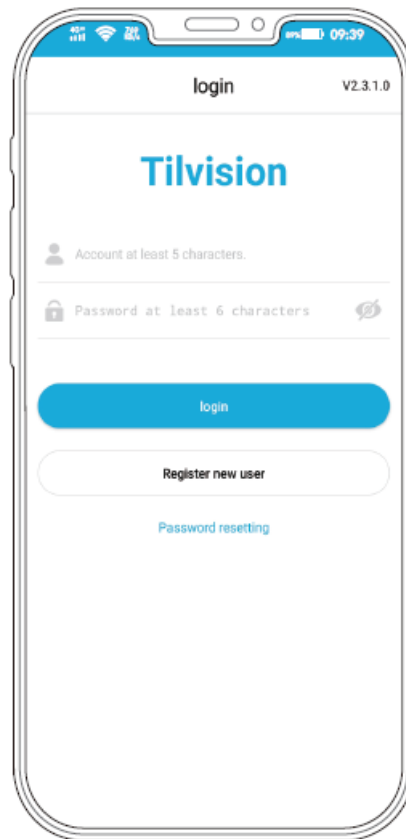


2. Download the "Tilvision" app in the App Store or Google Play.
3. Scan QR code on giftbox.

Once the App is installed, please check the App settings on the phone and allow all push notifications, then you won't miss any visitors.

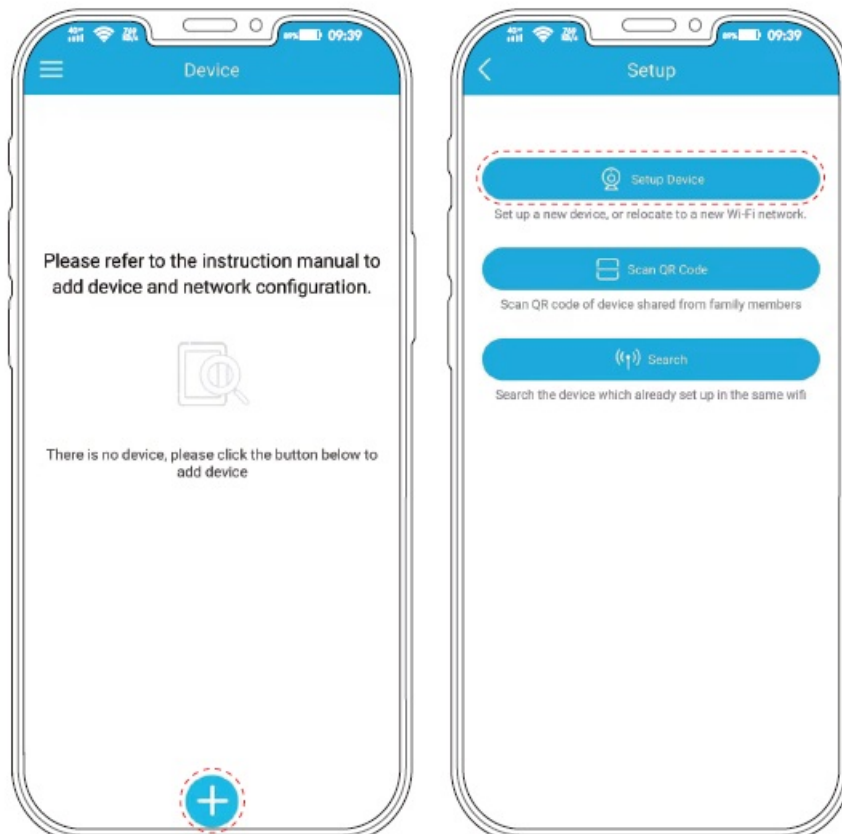
Register a new account and log in

You need to create a new account and login.



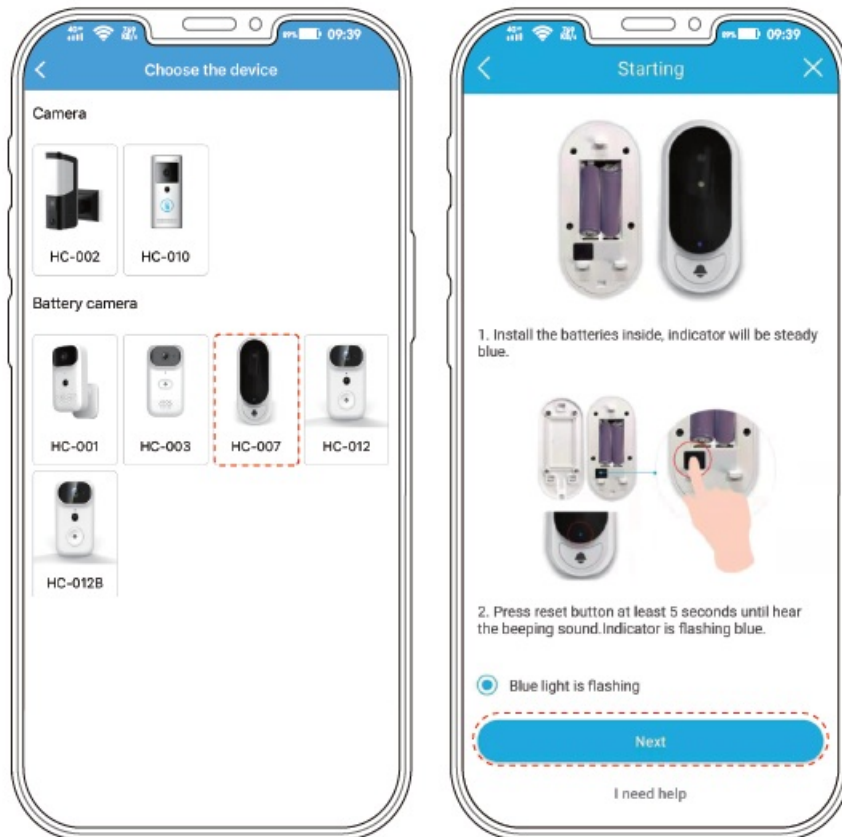
How to add device

1. Insert 2 x AA alkaline batteries into the device.
2. Open the app, click the button “+” at the bottom, then click the button “Setup Device”.

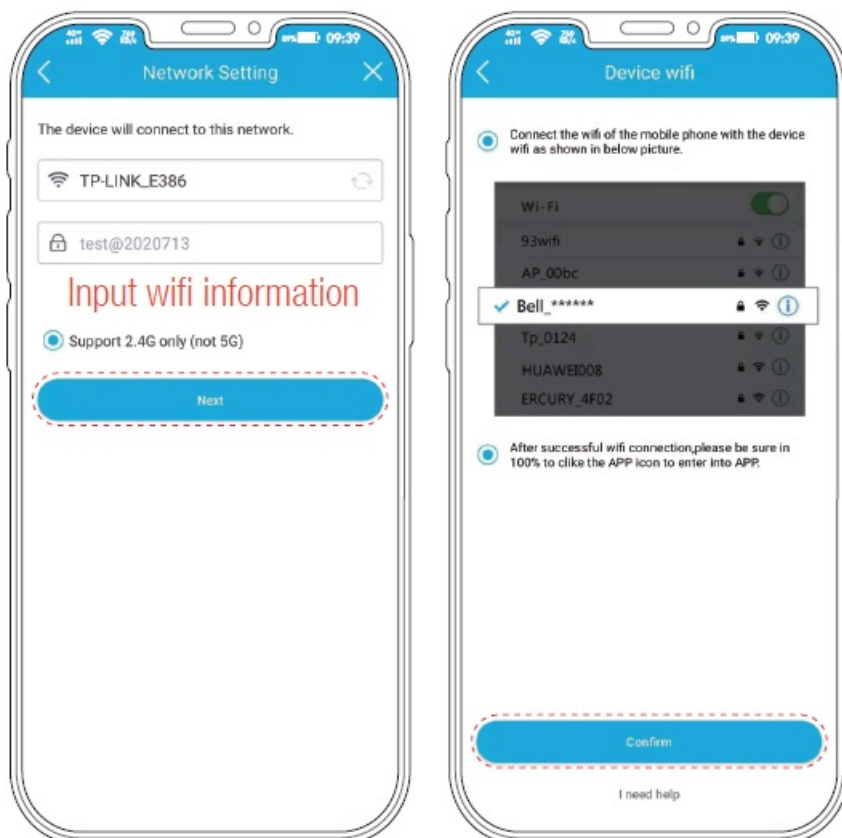


3. Click the product image that you've bought.
4. Pick up the device, hold, and keep pressing the “reset” button on the back for about 5 seconds until you hear a

“BEEP” sound. The blue indicator is flashing now. Then click “Next”.

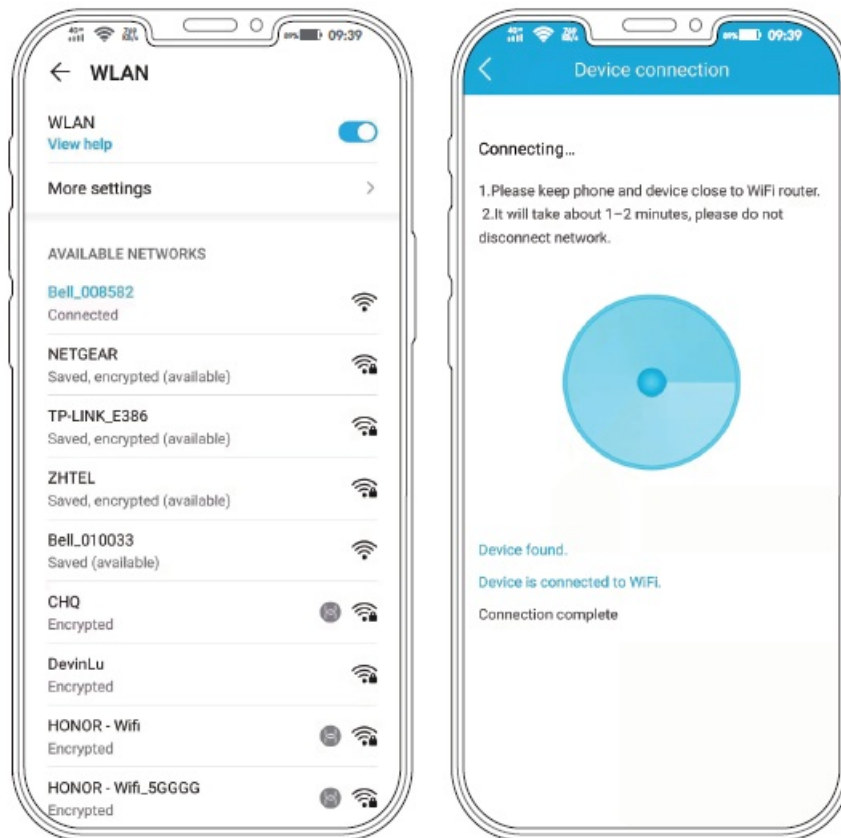


5. Input your wifi password,click “Next”,then click “Confirm”.



6. In the WLAN, select network “Bell_xxxxxx”.

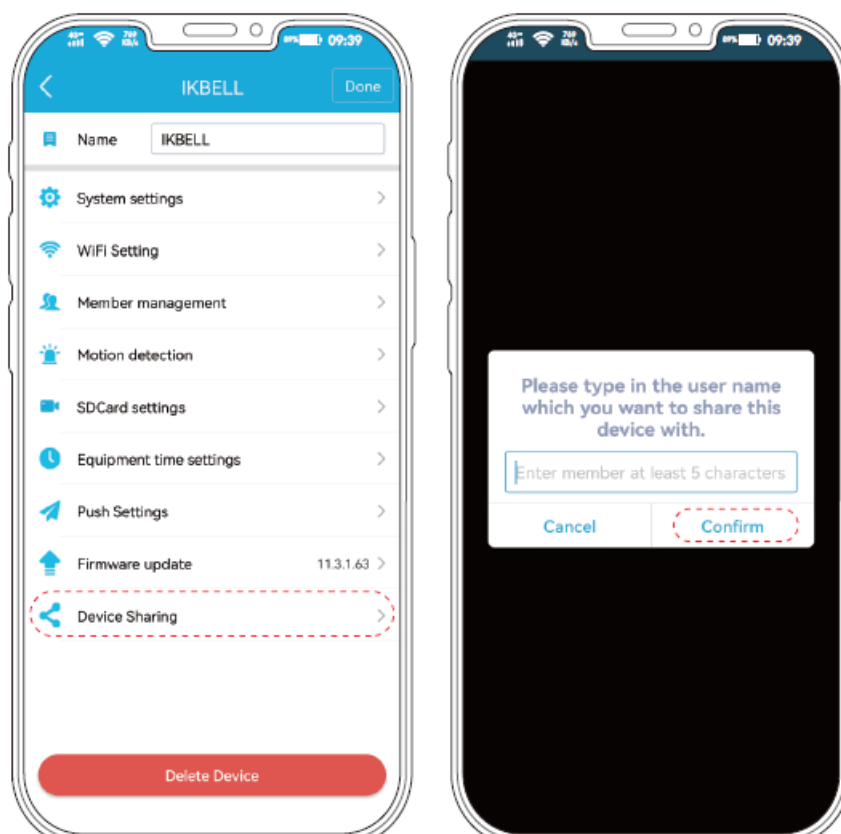
7. Reopen Tilvision app and wait,until the device is connected to wifi.



How to share devices

Method 1:

- **Step 1:** The administrator clicks “Device Sharing” inside the app, then input the user name that you’d like to share the device with.

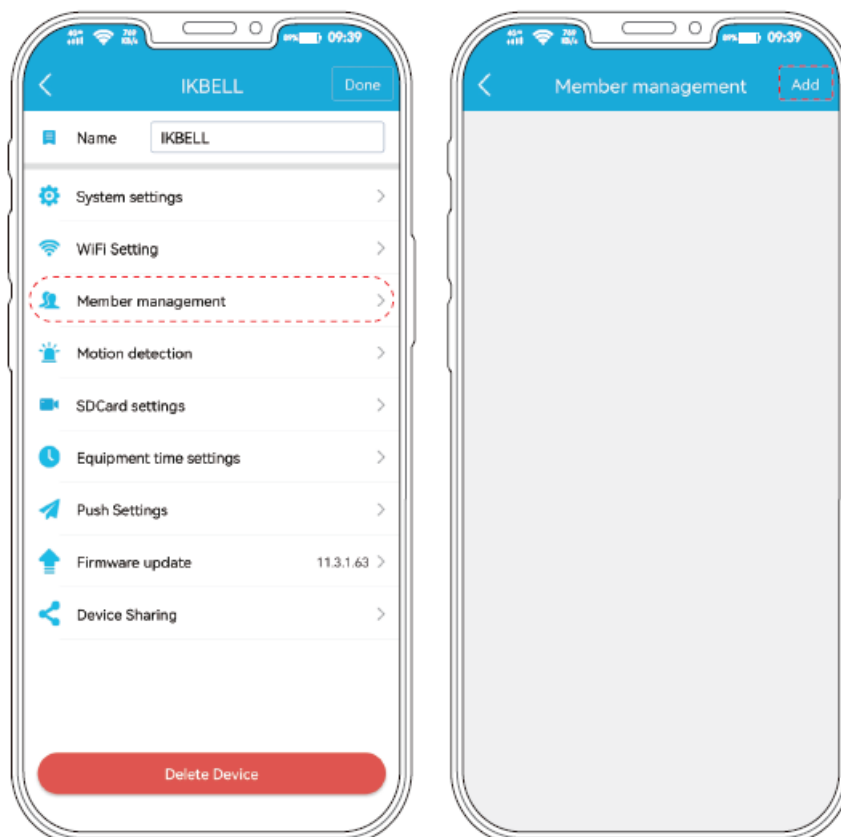


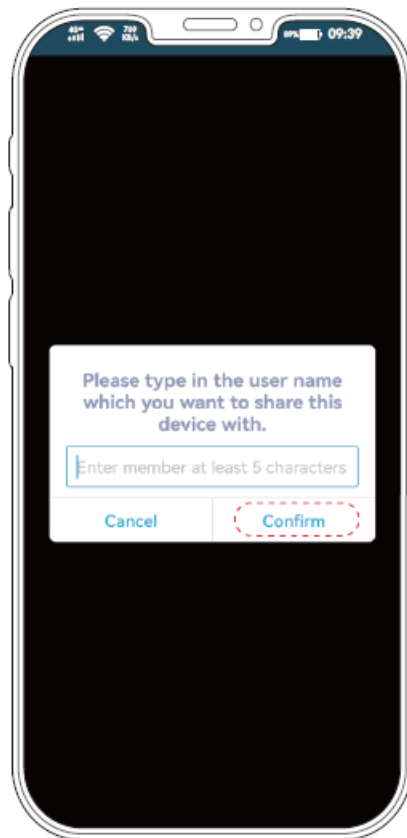
- **Step 2:** The family member click “Scan QR Code” on the app,and scan the shared QR code,the device will be added.



Method 2:

- **Step 1:** The administrator clicks “Member management” inside the app, and clicks “Add” on the top right corner, then inputs the user name that you’d like to share the device with.

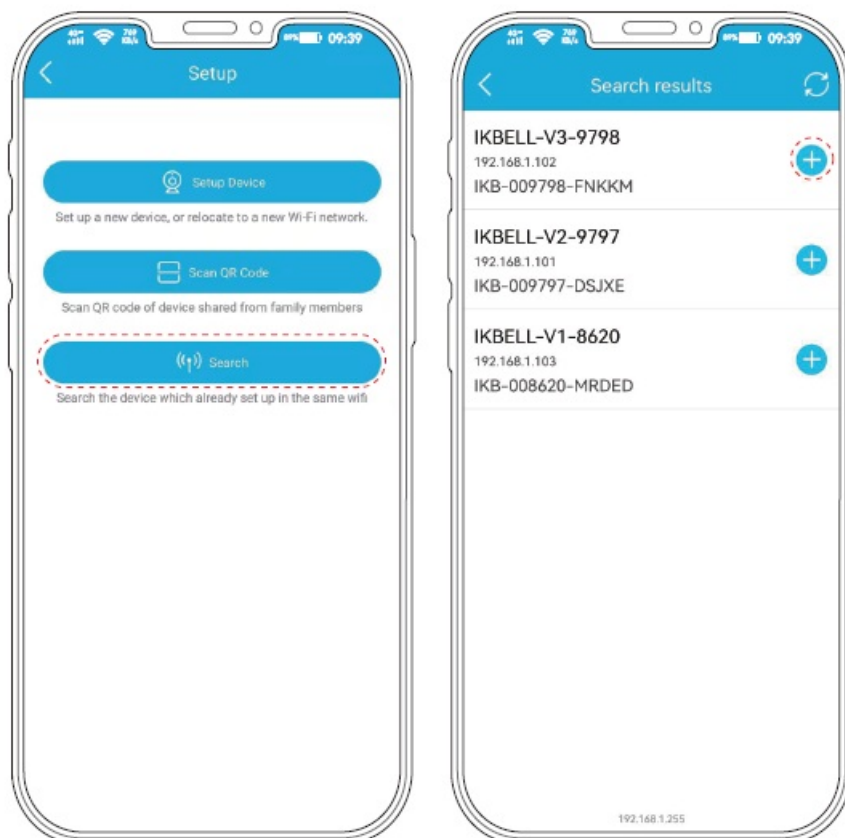


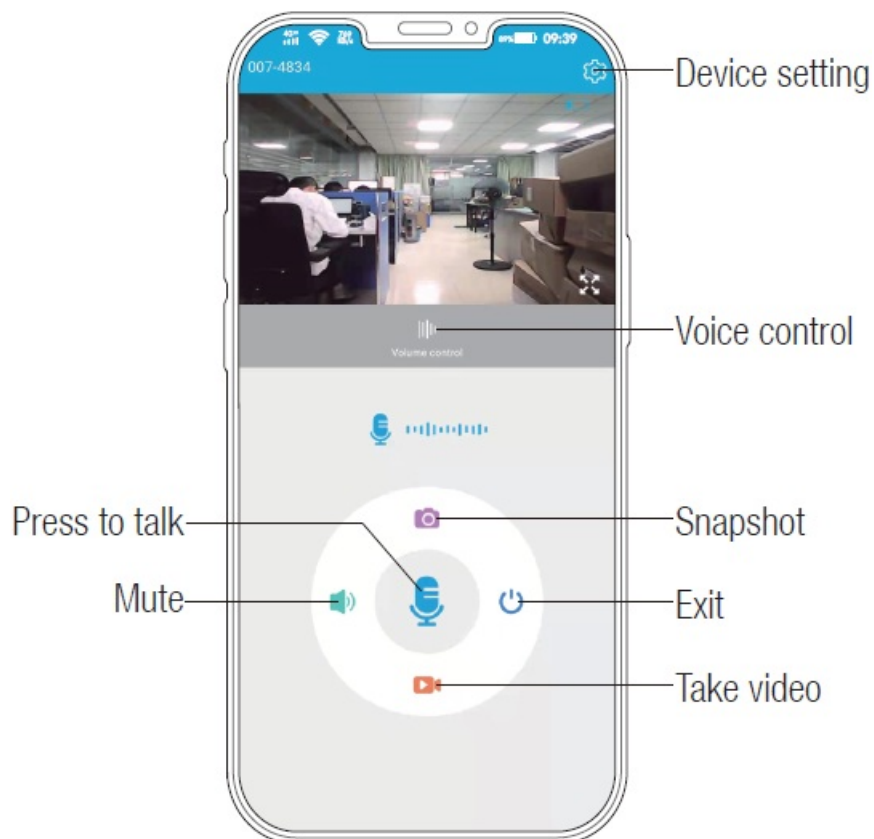
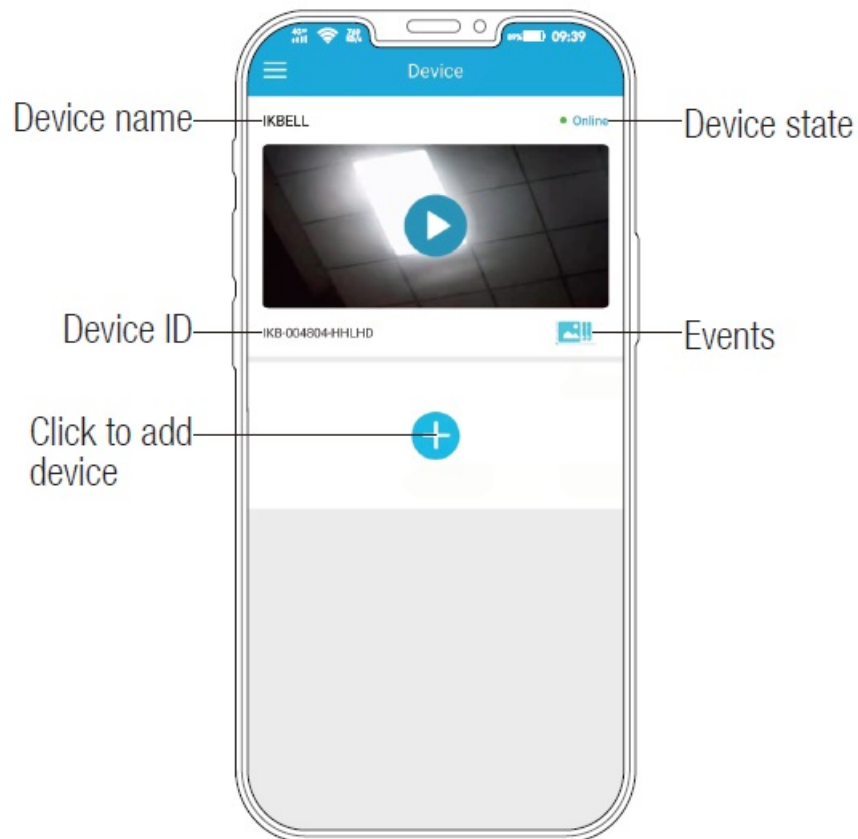


- **Step 2:** The family member clicks "Search" on the app, then click "+" to add a shared device.

Note:

The smartphone and shared device must be connected to the same wifi router.






Specification

Network	WiFi802.11b/g/n(2.4GHz)
433 frequency	433.92MHz+100KHz
Operating range	100m for 433 frequency and 50m for wifi network in the open air area.
Power supply	WiFi video doorbell 2 x 1.5V AA batteries (not included)
Audio	Half duplex
Camera	640 x 480, 90 degrees
Operating system	Android4.4, iOS8.0 or above
Water-proof	IP65
Environment	-20-50°C, 10-95% RH

Documents / Resources

	<p>Tilvision HC-007 Wi-Fi Video Doorbell Camera [pdf] Instruction Manual HC-007 Wi-Fi Video Doorbell Camera, HC-007, Wi-Fi Video Doorbell Camera, Video Doorbell Camera, Doorbell Camera, Camera</p>
---	---

References

- [User Manual](#)