

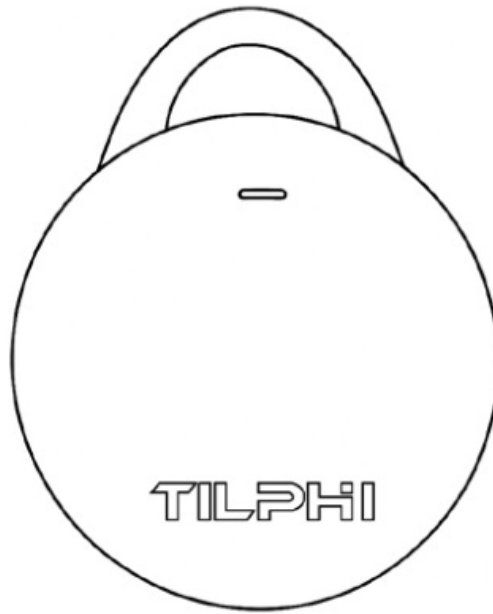


## **Contents** [ [hide](#) ]

- [1 TILPHI TP-A07 Item Finder](#)
- [2 Introduction](#)
- [3 Included in the Box](#)
- [4 Controls and Status](#)
- [5 Functions](#)
- [6 Pair with Find My App](#)
- [7 Battery Replacement](#)
- [8 Specifications](#)
- [9 Troubleshooting](#)
- [10 FCC Compliance Statement](#)
- [11 FAQ](#)
- [12 Documents / Resources](#)
  - [12.1 References](#)

# TILPHI

## **TILPHI TP-A07 Item Finder**



## Introduction

- The Tilphi G Tag works with Apple Find My to help you keep track of your stuff even further away.
- This tag is water-resistant and has a replaceable battery that lasts up to one year.
- The compact design makes it easy to attach to your important things, such as keys, bags, and suitcases.
- A simple setup can pair this item tracker with the Find My app on your Apple devices to track down your nearby items by playing a sound.
- The anonymous and encrypted Find My network also ensures your privacy and safety.

## Included in the Box

Item	Quantity
Tilphi G Tag	1
User Manual	1
Metal key ring	1

**Note:** To use the Apple Find My app or the Find Items app on Apple Watch to locate this item, the latest version of iOS, iPadOS, macOS, or watchOS is recommended.



Power Button



Battery Cover

## Controls and Status

Power Button	Status	Buzzer
Quickly press once	Power On	Long Beep
Press&hold for 3 seconds	Power Off	Two Short Beeps
Quickly press 5 times(Hold the 5th press until the ring)	Reset	Long Beep

\*This will restore the tag to factory settings and clear all the connection data. You must remove the item from the Find My app and add it back before using it again.

## Functions

### Long-distance Tracking

- If your item is lost outside the 70-metre Bluetooth range, the Find My network, connecting hundreds of millions of Apple devices worldwide, will help track your item. All the while, your privacy is protected at every step of the way.

### Left-behind Alerts

- If your item is left behind and disconnected from the Bluetooth of your Apple device, the Apple Find My app will instantly send you notifications without additional fees.

## Discourage Unwanted Tracking

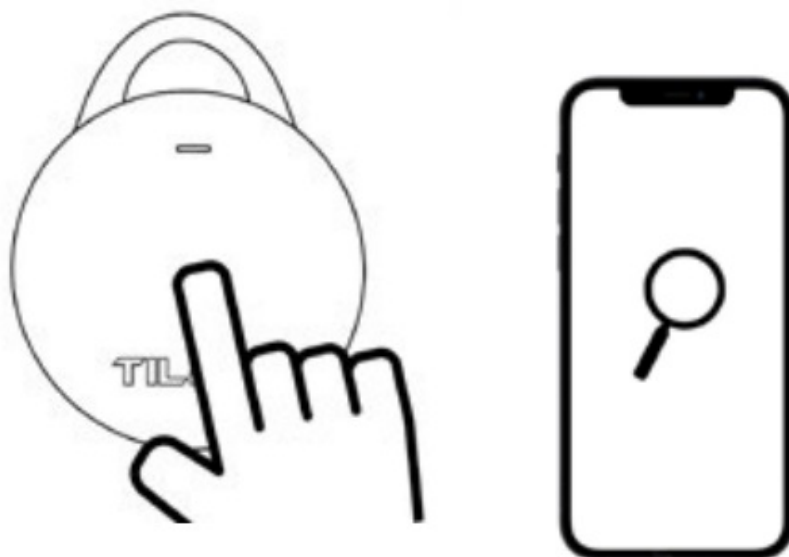
- If someone's tag lands on your items, your Apple device will automatically detect that tag and send you an alert to prevent unwanted tracking. If you still can't find it, the tag will make a sound to let you know.

## Pair with Find My App

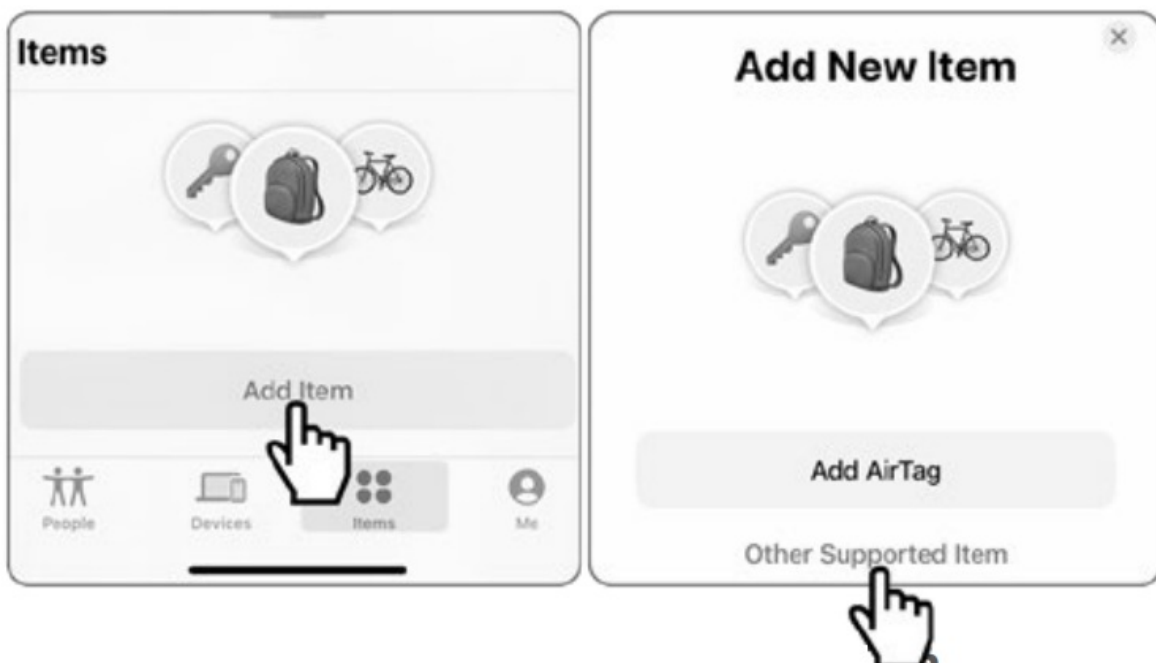
- Turn on your iOS device's Bluetooth. Make sure your iOS device is in the latest version.



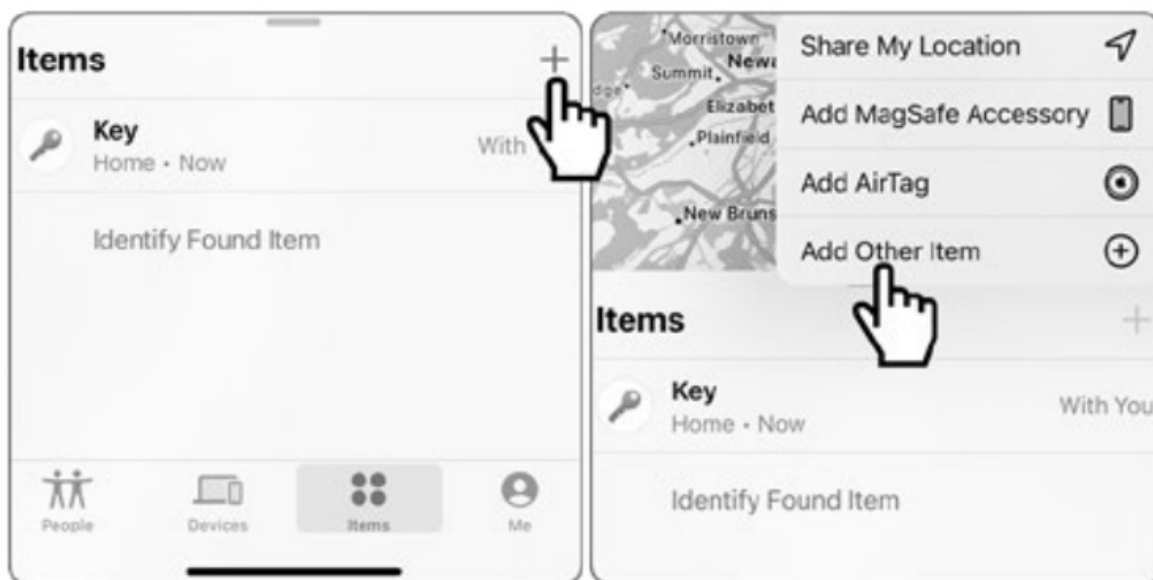
- Quick press the G tag's power button to turn it on and place it near to your iOS device.



- Open the “ Find My ” app, tap “Items”, and then “Add Item”. Select “Other Supported Item” and follow the in-app instructions to complete pairing.



- For subsequent pairing with other items, tap “+” and then “Add Other Item” to pair.

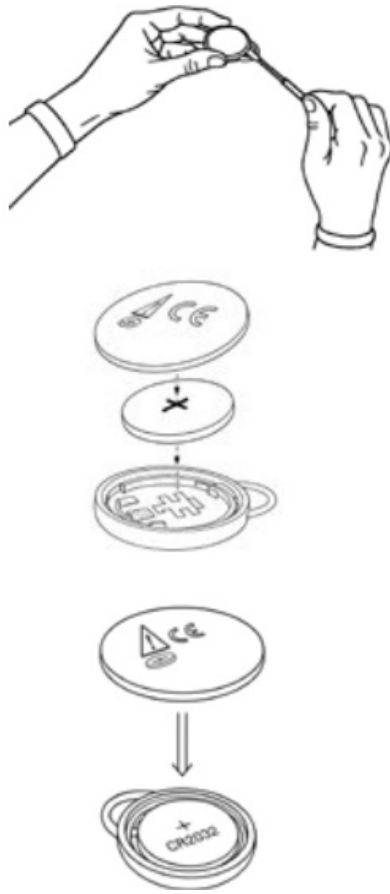


**Note:** To ensure the best user experience, please update the firmware whenever the update is available in the Find My app.

## Battery Replacement

Tilphi G Tag has a replaceable battery that lasts up to 1 year. If the battery runs down, you can replace it in 3 steps.

1. Insert a small tool into the gap or use your fingernail to open the battery cover.
2. Remove the old battery and replace it with a new one. Position the positive terminal facing up.
3. Close the battery cover by aligning the hole.



### Warning:

- Keep the battery out of reach of kids and pets. This tag contains a coin cell battery, which can be dangerous if chewed on or swallowed.
- Use batteries of the same type (CR2032) for replacement. Otherwise, it might cause damage.
- If you must discard the tag, take the battery out first.
- The used battery must be disposed of in a battery recycling bin.

### Specifications

Dimensions	38.75*32.36*9.06 mm
Weight	8 g
Range	Over 230 ft (70 m)
Battery	CR2032 , DC 3V, 240mAh
Frequency	2402~2480 MHz

Working Temperature	0~40°C(0~104°F)
Transmit Power	5 dBm
Connectivity	Bluetooth
Compatibility	iOS Devices
Firmware Update	Find My app
Voice Control	Siri

## Troubleshooting

### Failed to add the G Tag to the Find My app.

- Make sure the tag is powered on and near to the device.
- Make sure your iOS device is on the latest version and Bluetooth is turned on.
- Make sure the tag has not been paired with the Find My app on another iOS device.
- If you follow the previous steps and still fail to add, quickly press the power button 5 times (Hold the 5th press until the ring) to reset it and then try again.
- Alternatively, turn off Wi-Fi and Bluetooth, close the Find My app, wait 5 seconds, then turn everything back on and reopen the Find My app to search again.

### Possible reasons for delayed or missing Tag location updates.

- The tag's battery may be low or dead.
- The tag may have been powered off or had its battery removed.
- The iOS device bound to the tag may have disabled bluetooth, location services, or network connection.
- The app may have flagged the tag as being used for tracking others (determined by Apple's algorithm).
- The tag may be in a signal-blocked area, preventing it from communicating with nearby iOS devices.
- There may be no nearby iOS devices to help update the tag's location.
- If you have any further questions, please contact us: [support@tilphi.com](mailto:support@tilphi.com) .

## FCC Compliance Statement

This device complies with Part 15 of the FCC rules. Operation is subject to the following two conditions:

1. This device may not cause harmful interference.
2. This device must accept any interference received, including interference that may cause undesired operation.

**Note:** This equipment has been tested and found to comply with the limits for a Class B digital device, pursuant to part 15 of the FCC Rules. These limits are designed to provide reasonable protection against harmful interference in a residential installation. This equipment generates uses and can radiate radio frequency energy and, if not installed and used in accordance with the instructions, may cause harmful interference to radio communications. However, there is no guarantee that interference will not occur in a particular installation. If this equipment does cause harmful interference to radio or television reception, which can be determined by turning the equipment off and on, the user is encouraged to try to correct the interference by one or more of the following measures:

- Reorient or relocate the receiving antenna.
- Increase the separation between the equipment and receiver.
- Connect the equipment to an outlet on a circuit different from that to which the receiver is connected.
- Consult the dealer or an experienced radio/TV technician for help.

**Warning:** Changes or modifications not expressly approved by the party responsible for compliance could void the user's authority to operate the equipment.

## FCC Radiation Exposure Statement

This device complies with the FCC RF radiation exposure limits set forth for an uncontrolled environment. This transmitter must not be co-located or operating in conjunction with any other antenna or transmitter.



## CE Compliance Statement

- Hereby, Jeekon Inc. declares that this device is in compliance with the essential requirements and other relevant provisions of Directive 2014/53/EU.

## Legal Notice

- Use of the Works with Apple badge means that a product has been designed to work specifically with the technology identified in the badge and has been certified by the product manufacturer to meet Apple Find My network product specifications and requirements.

## WARNING

- **INGESTION HAZARD:** This product contains a button cell or coin battery.
- **DEATH** or serious injury can occur if ingested.
- A swallowed button cell or coin battery can cause Internal Chemical Burns in as little as 2 hours.
- **KEEP** new and used batteries **OUT OF REACH OF CHILDREN**.
- Seek immediate medical attention if a battery is suspected to be swallowed or inserted into any part of the body.



## KEEP BATTERIES OUT OF REACH OF CHILDREN

- Remove and immediately recycle or dispose of used batteries according to local regulations, as even used batteries may cause severe injury or death. Pls keep away from children.
- If you think batteries might have been swallowed or placed inside any part of the


body, seek medical attention immediately. Ingesting can cause severe chemical burns in just two hours and result in serious injury or death.

- The tag contains a CR2032 button cell or coin battery with a nominal voltage of 3V replace only with the same type (CR2032) and rating of battery, ensure correct polarity and make sure the positive (+) side is facing up, If replaced with an incorrect battery type, there may be a risk of fire or electric shock.
- Do not recharge non-rechargeable batteries.
- Do not forcibly discharge, recharge, disassemble, heat above 45°C, or incinerate the battery, as this may result in leakage, venting, or explosion, which can cause chemical burns and lead to injury.
- If the battery compartment does not close securely, stop using the device, remove the batteries, and keep them away from children.
- The tag contains components and radios that emit electromagnetic fields. These electromagnetic fields may interfere with pacemakers, defibrillators, or other medical devices. Maintain a safe distance of separation between your medical device and tag. Stop using the tag if you suspect it is interfering with your pacemaker, defibrillator, or any other medical device.

## FAQ

- What type of batteries does the G Tag use?
  - The G Tag uses CR2032 batteries for operation. It is important to replace them with the same type to avoid damage.
- How do I pair the G Tag with the Find My app?
  - To pair the G Tag with the Find My app, ensure your iOS device's Bluetooth is on and running the latest version. Follow the instructions provided in the user manual for troubleshooting steps if needed.

## Documents / Resources

	<a href="#">TILPHI TP-A07 Item Finder [pdf]</a> User Manual TP-A07, 2BOCCTP-A07, 2BOCCTPA07, TP-A07 Item Finder, TP-A07, Item Finder, Finder
---	---

## References

- [User Manual](#)

💎 2BOCCTP-A07, 2BOCCTPA07, Finder, Item Finder, TILPHI, TP-A07, TP-A07 Item

📁 TILPHI    Finder

---

## Leave a comment

Your email address will not be published. Required fields are marked \*

Comment \*

Name

Email

Website

☐ Save my name, email, and website in this browser for the next time I comment.

**Post Comment**

**Search:**

e.g. whirlpool wrf535swhz

**Search**

[Manuals+](#) | [Upload](#) | [Deep Search](#) | [Privacy Policy](#) | [@manuals.plus](#) | [YouTube](#)

This website is an independent publication and is neither affiliated with nor endorsed by any of the trademark owners. The "Bluetooth®" word mark and logos

are registered trademarks owned by Bluetooth SIG, Inc. The "Wi-Fi®" word mark and logos are registered trademarks owned by the Wi-Fi Alliance. Any use of these marks on this website does not imply any affiliation with or endorsement.