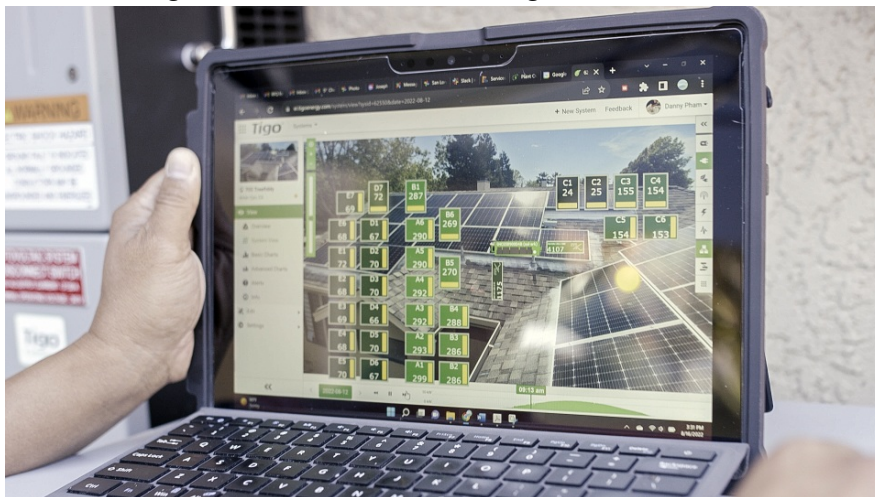




# Tigo Green Glove Service Program User Guide

[Home](#) » [Tigo](#) » **Tigo Green Glove Service Program User Guide** 

# Tigo Green Glove Service Program User Guide



## Contents

- 1 Green Glove Service Program
- 2 How it works
- 3 Documents / Resources
  - 3.1 References
- 4 Related Posts

## Green Glove Service Program

A premium support experience for select C&I and residential solar installers



## **DESIGN**

A comprehensive six-point system design review



## **INSTALL**

A dedicated on-call service advisor while you install



## **POST-INSTALL**

A post installation check-in, even at the site, to review how everything went\*

\*On-site visits are at the discretion of Tigo Energy (most issues can be reviewed remotely)

## **How it works**

After registering online, Green Glove support personnel will work with the installer to determine the scope of the engagement

For example, the 6-point design review includes:

1. System Design
2. Compatibility Design
3. Installation Plan
4. Powerflow Chart (post-install)
5. System View (post-install)
6. Electrical Charts (post-install)

## **GET STARTED TODAY**




“The Green Glove program extends our engineering and field experience to our installer customers”

<https://www.tigoenergy.com/green-glove-service>



## Documents / Resources

	<p><a href="#">Tigo Green Glove Service Program</a> [pdf] User Guide Green Glove Service Program, Green, Glove Service Program, Service Program, Program</p>
---	--

## References

- [Green Glove Service](#)
- [User Manual](#)