

# TIGHT AV APC-ENC-OLED DSP Control Panel User Guide

[Home](#) » [TIGHT AV](#) » TIGHT AV APC-ENC-OLED DSP Control Panel User Guide 

## Contents

- 1 APC-ENC-OLED DSP Control Panel
  - 1.1 DSP Control Panel with Encoder and OLED Display
  - 1.2 Quick Start guide
  - 1.3 Network Setup:
- 2 Documents / Resources
- 3 Related Posts

## APC-ENC-OLED DSP Control Panel



Quick Start Guide  
APC-ENC-OLED  
DSP Control Panel with Encoder and OLED Display  
All Rights Reserved  
Version: ACP-ENC-OLED\_2021V1.0

## DSP Control Panel with Encoder and OLED Display

### Quick Start guide

Panel and DSP should have an IP-address in the same network segment.

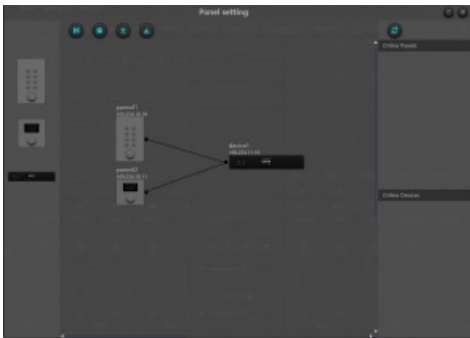
### Network Setup:

If the Control panel is Online, it will appear in the top right under [Online Panels] Click on the Panel to change the

default IP and subnet address. The Panel cannot use DHCP. It must have a fixed IP and subnet address.

Open the TightAV DSP software and open the Setting/Panel Setting menu.

Panels and DSP available for configuration is listed in the Online Panels section to the right. Drag and drop units onto the canvas and connect the dots with the virtual cables.



**Offline device:** Panels can be configured offline for later upload on-site. Drag offline device from the sidebar to panel design area and double click to edit it. Double click the panel in design area to enter panel configuration interface. After finishing configuration, click the toolbar download icon to download the panel configuration to hardware.

**OLED panel:** The OLED panel consists of a 1.3" OLED screen and a knob. The panel functions are added in a list, and a single encoder is used for selecting the function and parameter adjustment.




Click “add menu” to show menu selection box. Choose corresponding menu item and configure it. After finishing the setup, click toolbar download icon to download the configuration to panel hardware.

**Panel menu navigation:**

1. Display panel name and IP address on main interface and turn the knob left or right to select function.
2. Press the button on the knob, and the second row on menu interface starts to flash which indicates edit mode.
3. Turn the knob left or right to change value.
4. Press the button on the knob again to exit edit mode and go back to menu mode

**Documents / Resources**



Quick Start Guide  
APC-ENC-OLED  
DSP Control Panel with Encoder  
and OLED Display

[TIGHT AV APC-ENC-OLED DSP Control Panel](#) [pdf] User Guide  
APC-ENC-OLED, DSP Control Panel, APC-ENC-OLED DSP Control Panel, Control Panel, Panel