



# THUNDEROBOT ML602 Gaming Mouse Instruction Manual

[Home](#) » [THUNDEROBOT](#) » THUNDEROBOT ML602 Gaming Mouse Instruction Manual 



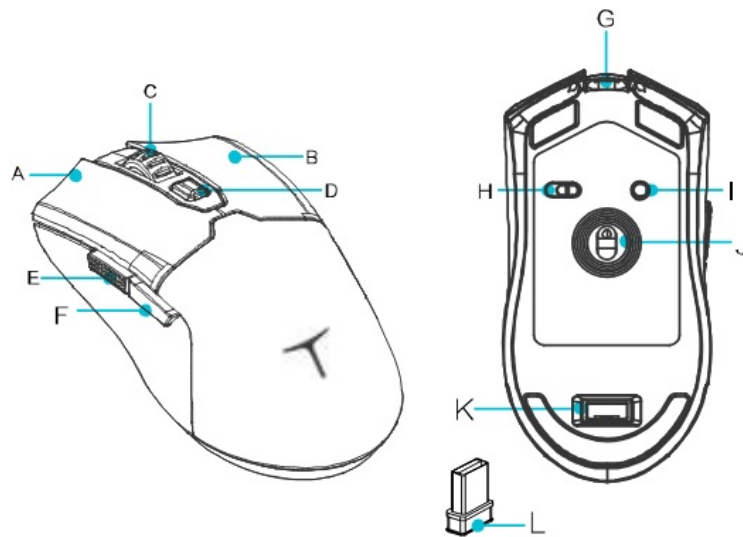
## THUNDEROBOT ML602 Gaming Mouse Instruction Manual

Please read the instructions carefully before using this product and keep it well for referent.

### Contents

- [1 LAYOUT](#)
- [2 OS SUPPORT](#)
- [3 SPECIFICATION](#)
- [4 INSTRUCTIONS FOR USE](#)
- [5 Documents / Resources](#)
  - [5.1 References](#)

### LAYOUT



**Size: 126 \* 63.8 \* 39.8 mm**

A. Left button	G. TypeC port
B. Right button	H. Mode switch
C. Scroll wheel	I. BT pairing button
D. DPI button	J. Optical sensor
E. Forward button	K. 2.4G wireless dongle compartment
F. Backward button	L. 2.4G wireless dongle

## OS SUPPORT

Windows 11/Windows 10/Windows 8/Windows 7/ Windowse Vista/WindowseXP

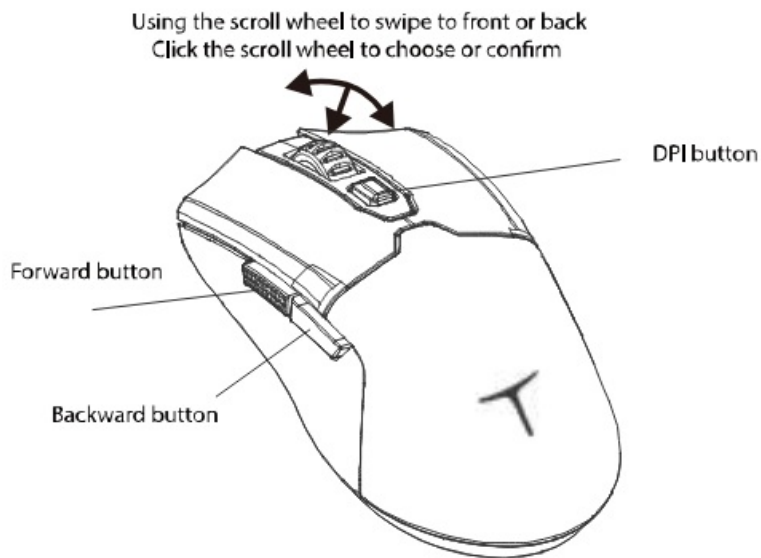
Mac OS X 10.8 – 10.11, iOS 13.1, Android 4.3 and newer

## WARNING

1. Do not disassemble, crush, heat, or incinerate the battery.
2. Do not allow sharp objects, screwdrivers, or similar items to touch or pry the battery.

\*The above operations may cause the battery to ignite or burn.

## SPECIFICATION



## DPI INDICATORS

	DPI	INDICATOR COLOR
1	800	RED
2	1600	GREEN
3	2400	BLUE
4	3200	YELLOW
5	6400	PINKY

## PACKING LIST

Mouse \* 1  
USB cable \* 1  
User manual / Certificate \* 1  
2.4G wireless dongle \* 1

## INSTRUCTIONS FOR USE

### Mouse Control Mode

Bottom three-stage switch:

1. Power off mode (OFF): Turn off directly in wireless mode.
2. Power on, 2.4G mode (2.4G): Scroll wheel green light flashes, insert the 2.4G receiver into the computer's USB port, and the mouse will work.
3. Power on, Bluetooth mode (BT): Scroll wheel blue light flashes, approach the device to be connected, press and hold the bottom Bluetooth pairing button for 3 seconds to enter pairing mode (scroll wheel blue light flashes rapidly), and then it can be paired with the device.

"Wired mode: Plug and play, not affected by the switch, default wired mode connection in simultaneous connection with wired and other modes. Default charging in wired mode.

## **Polling Rate Adjustment**

Default polling rate is 1000Hz; adjust to four gears by right click + forward side button: 125Hz (red light flashes on scroll wheel) – 250Hz (blue light flashes on scroll wheel) – 500Hz (green light flashes on scroll wheel) – 1000Hz (purple light flashes on scroll wheel).

## **Other Functions**

### **Auto Sleep Mode**

In 125Hz/250Hz/500Hz, the mouse enters sleep mode after one minute of inactivity and wakes up by moving.

In 1000Hz, the mouse enters sleep mode after 8 minutes of inactivity and wakes up by moving.

### **Low Voltage Warning**

When the mouse is low on battery, the indicator light near the scroll wheel will flash red to remind you to charge in time.

### **Charging Display**

During charging, the LED indicator light near the scroll wheel will be red. After the battery is fully charged, this LED indicator light will switch back to default Dp indication.

### **Safety reminder:**

Charging voltage supports up to 5V, and charging current should not exceed 1A.

## **FCC Warning**

This equipment has been tested and found to comply with the limits for a Class B digital device, pursuant to part 15 of the FCC Rules. These limits are designed to provide reasonable protection against harmful interference in a residential installation. This equipment generates, uses and can radiate radio frequency energy and, if not installed and used in accordance with the instructions, may cause harmful interference to radio communications. However, there is no guarantee that interference will not occur in a particular installation. If this equipment does cause harmful interference to radio or television reception, which can be determined by turning the equipment off and on, the user is encouraged to try to correct the interference by one or more of the following measures:

- Reorient or relocate the receiving antenna.
- Increase the separation between the equipment and receiver.
- Connect the equipment into an outlet on a circuit different from that to which the receiver is connected.
- Consult the dealer or an experienced radio/TV technician for help.

**Caution:** Any changes or modifications to this device not explicitly approved by manufacturer could void your authority to operate this equipment.

This device complies with part 15 of the FCC Rules. Operation is subject to the following two conditions:

1. This device may not cause harmful interference, and
2. this device must accept any interference received, including interference that may cause undesired operation.

The device has been evaluated to meet general RF exposure requirement. The device can be used in portable exposure condition without restriction.



THUNDEROBOT  
[www.thunderobot.com](http://www.thunderobot.com)

## **Documents / Resources**



**[THUNDERBOT ML602 Gaming Mouse](#)** [pdf] Instruction Manual  
2BFDF-ML602, 2BFDFML602, ml602, ML602 Gaming Mouse, ML602 Mouse, Gaming Mouse, Mouse

References

- [User Manual](#)

[Manuals+](#), [Privacy Policy](#)

This website is an independent publication and is neither affiliated with nor endorsed by any of the trademark owners. The "Bluetooth®" word mark and logos are registered trademarks owned by Bluetooth SIG, Inc. The "Wi-Fi®" word mark and logos are registered trademarks owned by the Wi-Fi Alliance. Any use of these marks on this website does not imply any affiliation with or endorsement.