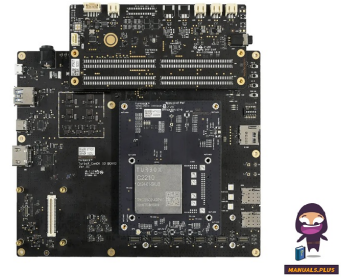


Thundercomm
C2210
Development
Kit



Thundercomm C2210 Development Kit User Guide

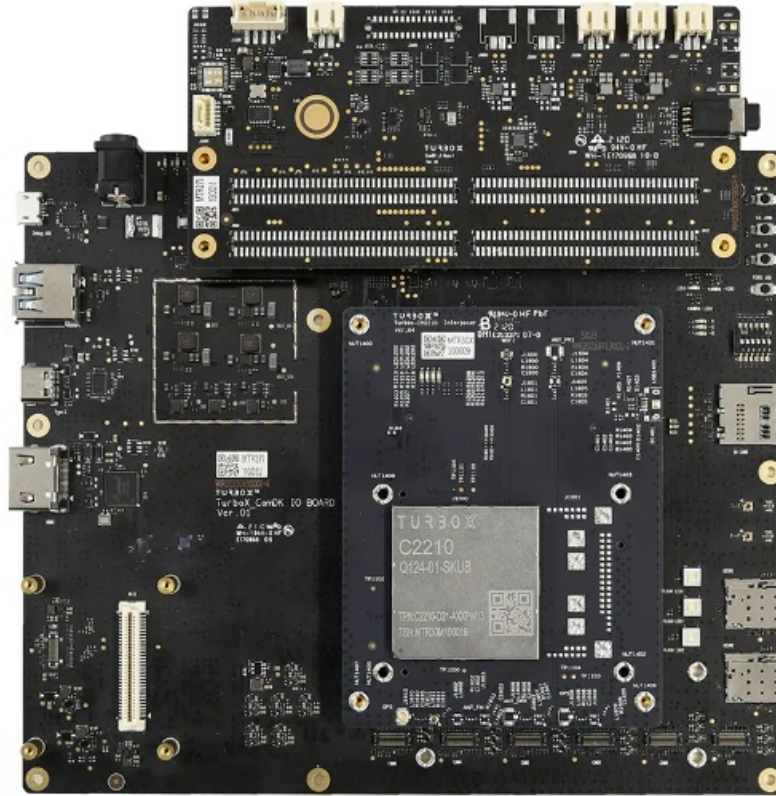
[Home](#) » [Thundercomm](#) » Thundercomm C2210 Development Kit User Guide 

Contents

- [1 Thundercomm C2210 Development Kit](#)
- [2 Specifications](#)
- [3 Product Usage Instructions](#)
- [4 Package List](#)
- [5 Interface List](#)
- [6 Let's Get Started](#)
- [7 FAQ](#)
- [8 Documents / Resources](#)
 - [8.1 References](#)

Thundercomm

Thundercomm C2210 Development Kit



Specifications

- **Product Name:** Thundercomm TurboX C2210 Development Kit
- **Package List:**
 - C2210 Interposer Board
 - Main Board
 - Audio Board + Sensor Board (assembly)
 - LCD Touch Panel* (not included in standard DK package)
 - Power Adapter
 - Wi-Fi/BT Antenna
 - GPS Antenna
 - Speaker (x2) (except Japan)
- **Voltage Input to DK:** 12V
- **Power Adapter:** 2A
- **DC in Jack Size:** 2.5mm x 5.5mm (inner diameter x outer diameter)

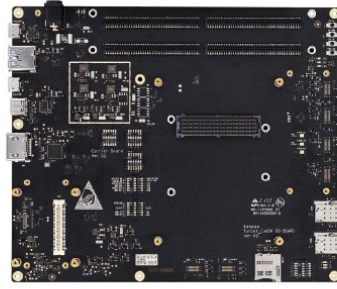
Product Usage Instructions

1. Take out the Interposer Board, Sensor Board, and Main Board carefully from the package.
2. Connect the Interposer Board to the Main Board.
3. Connect the Sensor Board and Audio Board to the Main Board.
4. Connect the power adapter to the board assembly via 12V DC input jack (connector 29).
5. Connect the board assembly to a computer via Type-C USB connector (connector 25) if adb tool is needed.
6. Connect to Micro USB port (for UART debug) (connector 28) if debug function is needed.
7. Press the Power on button (connector 1) to boot up the device.

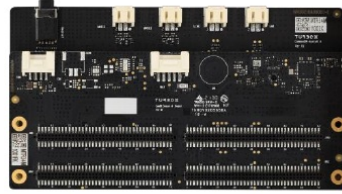
Package List



C2210 Interposer Board



Main Board



Audio Board + Sensor Board (assembly)



LCD Touch Panel^{*(1)}



Power Adapter
(except Japan)⁽²⁾



Wi-Fi/BT Antenna



GPS Antenna



Speaker (x2)



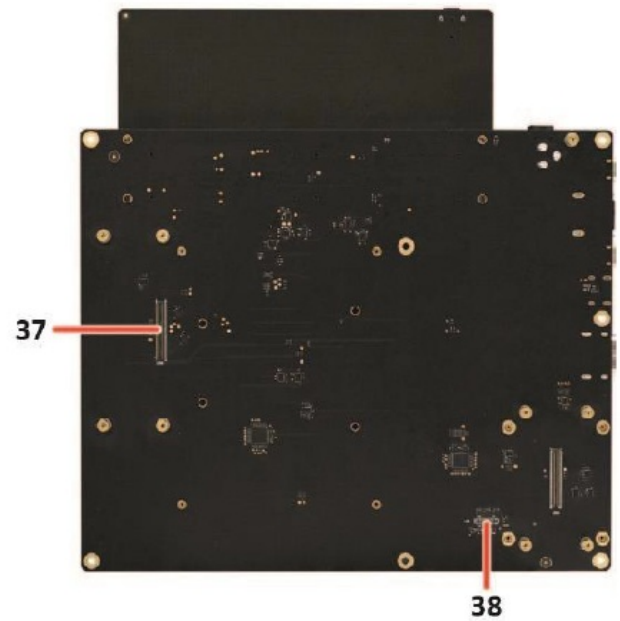
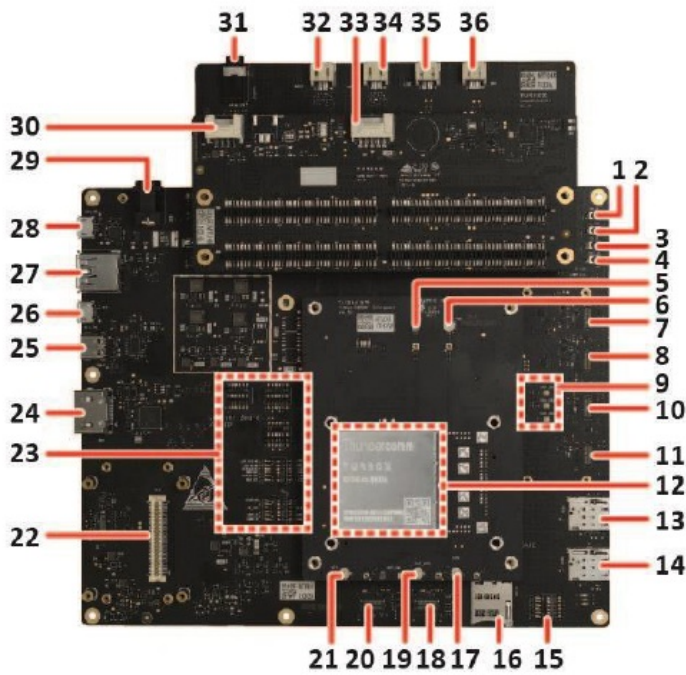
Camera Module

NOTES:

1. All parts are included in the advanced DK package. Parts marked * are not included in the standard DK package.
2. Due to PSE regulations, there is no inbox adapter for the products sold to Japan. Please contact your distributor if you have any needs.

- **Voltage input to DK:** typical 12V.
- **Power adapter:** $\geq 2A$.
- **DC in jack size:** 2.5mm x 5.5mm (inner diameter x outer diameter).

Interface List



1. Power on button
2. Volume down button
3. Volume up button
4. Force USB button
5. Wi-Fi antenna connector
6. Primary antenna connector
7. Camera module connector 1
8. Camera module connector 0
9. Flash LEDs
10. Camera module connector 3
11. Camera module connector 2
12. SOM plate
13. NA *
14. NA *
15. Boot config switch
16. SD card slot
17. NA *
18. NA *
19. Discontinuous reception antenna
20. NA *
21. GNSS signal-receiving antenna
22. NA *
23. DIP switch
24. HDMI out interface
25. Type-C USB port
26. Micro USB port
27. NA *
28. Micro USB port (for UART debug)

29. DC in jack
30. Fan connector *
31. Headset connector *
32. Analog microphone connector 3 *
33. Battery connector
34. Analog microphone connector 1 *
35. Line out speaker connector
36. Ear speaker connector
37. NA *
38. Display panel connector (for LCM)

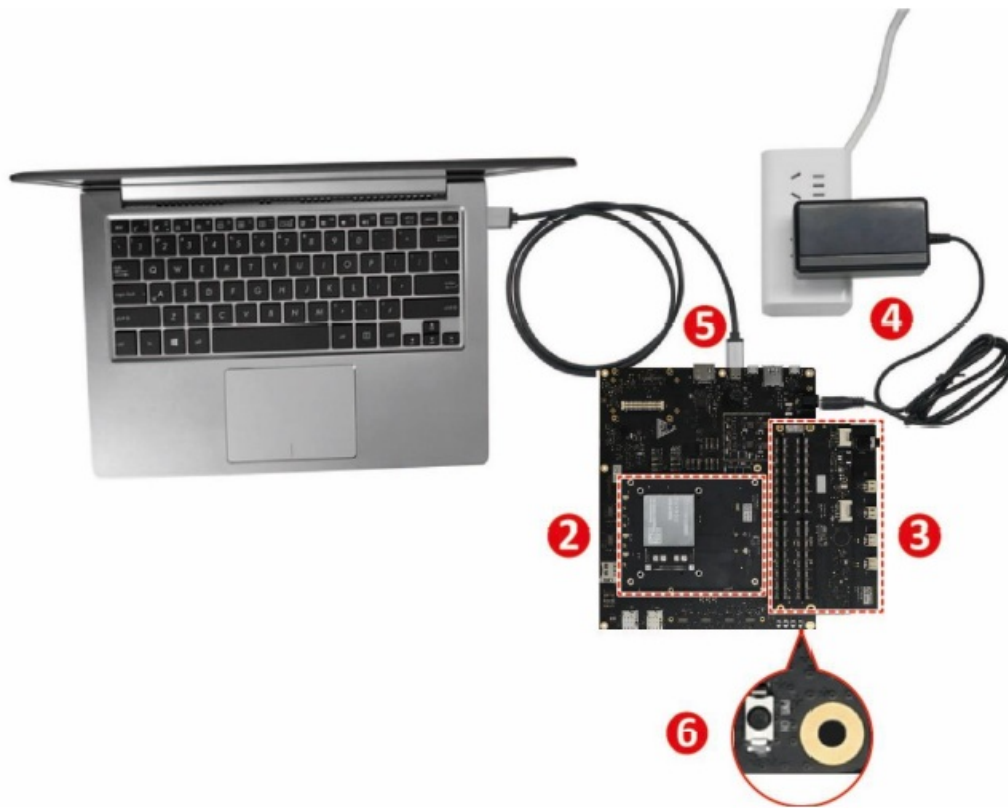
NOTES:

- indicates that these interfaces are unavailable on C2210.
- The above board layout is compliant with Common DK HW version v02. For v01 relevant quick start guide, please contact us at service@thundercomm.com.

Let's Get Started

Follow the steps below to boot up your device.

1. Take out the Interposer Board, Sensor Board, and Main Board carefully from the package.
2. Connect the Interposer Board to the Main Board.
3. Connect the Sensor Board and Audio Board to the Main Board.
4. Connect the power adapter to the board assembly via 12V DC in jack (connector 29).
5. Connect the board assembly to a computer via
 - Type-C USB connector (connector 25) if adb tool is needed.
 - Micro USB port (for UART debug) (connector 28) if debug function is needed.
6. Press the Power on button (connector 1) to boot up the device.



Contact us

- **Email:** service@thundercomm.com
- **Address:** 1601 McCarthy Blvd Suite R-12 Milpitas CA,95035
- **Support software and documentation downloads:** www.thundercomm.com

Notices and trademarks

- Thundercomm may have patents or pending patent programs covering subject matter described in this document. The furnishing of this document does not give you any license to these patents. You can send license inquiries to service@thundercomm.com.
THUNDERCOMM PROVIDES THIS PUBLICATION “AS IS” WITHOUT WARRANTY OF ANY KIND, EITHER EXPRESS OR IMPLIED, INCLUDING, BUT NOT LIMITED TO, THE IMPLIED WARRANTIES OF NON-INFRINGEMENT, MERCHANTABILITY OR FITNESS FOR A PARTICULAR PURPOSE. Some jurisdictions do not allow disclaimer of express or implied warranties in certain transactions; therefore, this statement may not apply to you.
- Changes are made periodically to the information herein; these changes will be incorporated in new editions of the publication. To provide better service, Thundercomm reserves the right to improve and/or modify the products and software programs described in the manuals, and the content of the manual, at any time without additional notice.
- The software interface and function, and hardware configuration described in the manuals included with your development board or system on module might not match exactly the actual configuration of what you have purchased. For the configuration of the product, refer to the related contract (if any) or product packing list, or consult the distributor for the product sales. Thundercomm may use or distribute any of the information you supply in any way it believes appropriate without incurring any obligation to you.

- The products described in this document are not intended for use in implantation or other life support applications where malfunction may result in injury or death to persons. The information contained in this document does not affect or change
- Thundercomm product specifications or warranties. Nothing in this document shall operate as an express or implied license or indemnity under the intellectual property rights of Thundercomm or third parties. All information contained in this document was obtained in specific environments and is presented as an illustration. The result obtained in other operating environments may vary.
- The information in this document should not be construed as an invitation for offer or any advice to the visitors. Please consult the professional comments from the sales consultant prior to taking any actions of investment or purchase.
- Thundercomm may use or distribute any of the information you supply in any way it believes appropriate without incurring any obligation to you.
- Any references in this publication to non-Thundercomm Web sites are provided for convenience only and do not in any manner serve as an endorsement of those Web sites. The materials at those Web sites are not part of the materials for this Thundercomm product, and use of those Web sites is at your own risk. Thundercomm shall not be responsible for the content of the third party.
- Any performance data contained herein was determined in a controlled environment. Therefore, the result obtained in other operating environments may vary significantly. Some measurements may have been made on development-level systems and there is no guarantee that these measurements will be the same on generally available systems. Furthermore, some measurements may have been estimated through extrapolation. Actual results may vary. Users of this document should verify the applicable data for their specific environment.
- This document is copyrighted by Thundercomm and the property right of the date mentioned in this document, including but not limited to trademarks, patents, copyrights, trade name, etc. are not covered by any open-source license. Thundercomm may update this document at any time without notice.
- Anyone who doesn't have the right to amend, reprint, republication, reproduce, transmit, distribute or use this document in business or public purpose without the prior written consent of Thundercomm.
- E-mail messages sent to Thundercomm via the Internet are not guaranteed to be completely secure. Thundercomm shall not be liable for any loss incurred by the surfer when transmitting any information over the Internet or for any loss incurred by Thundercomm when sending any information over the Internet at your request.
- Thundercomm has all rights under other relevant exemptions provided by laws and regulations, and Thundercomm's failure to claim or delay in claiming such rights shall not be deemed to be a waiver of such rights by Thundercomm.
- Thundercomm reserves the right of final interpretation of this document.
- Thundercomm, Thundercomm Turbox, TURBOX, Thundersoft turbox are trademarks of Thundercomm Corporation or its associate companies in China and/or other countries. All other trademarks are the property of their respective owners.

FAQ

Q: What is included in the advanced DK package?

A: The advanced DK package includes all parts listed in the package list, including the LCD Touch Panel.

Q: How can I obtain the relevant quick start guide for v01 hardware version?

A: Please contact Thundercomm at service@thundercomm.com for the v01 hardware version quick start guide.

Q: What are the power requirements for the device?

A: The device requires a typical 12V input voltage and a 2A power adapter.

Q: How can I contact Thundercomm for support?

A: You can reach Thundercomm via email at service@thundercomm.com or visit their address at 1601 McCarthy Blvd Suite R-12 Milpitas CA,95035.

Documents / Resources

	Thundercomm C2210 Development Kit [pdf] User Guide C2210 Development Kit, C2210, Development Kit, Kit
---	--

References

- [Thundercomm - World leading IoT product and solution provider](#)
- [Thundercomm - World leading IoT product and solution provider](#)
- [User Manual](#)

[Manuals+](#), [Privacy Policy](#)

This website is an independent publication and is neither affiliated with nor endorsed by any of the trademark owners. The "Bluetooth®" word mark and logos are registered trademarks owned by Bluetooth SIG, Inc. The "Wi-Fi®" word mark and logos are registered trademarks owned by the Wi-Fi Alliance. Any use of these marks on this website does not imply any affiliation with or endorsement.