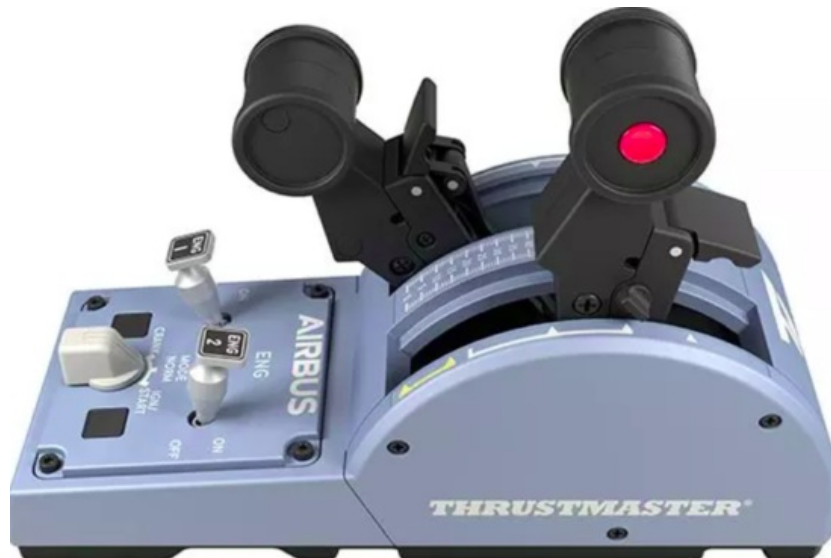




THRUSTMASTER TCA QUADRANT Airbus Edition User Manual

[Home](#) » [THRUSTMASTER](#) » THRUSTMASTER TCA QUADRANT Airbus Edition User Manual 

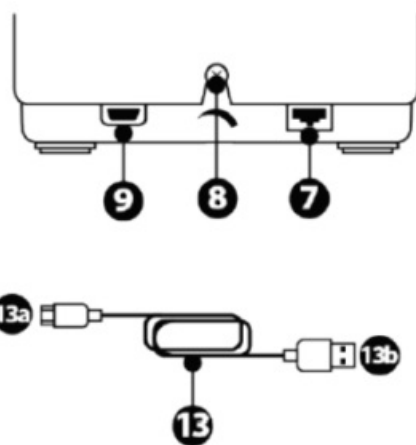
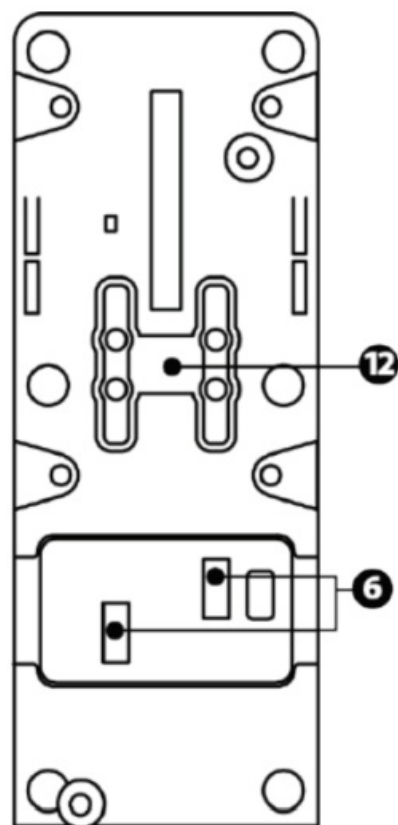
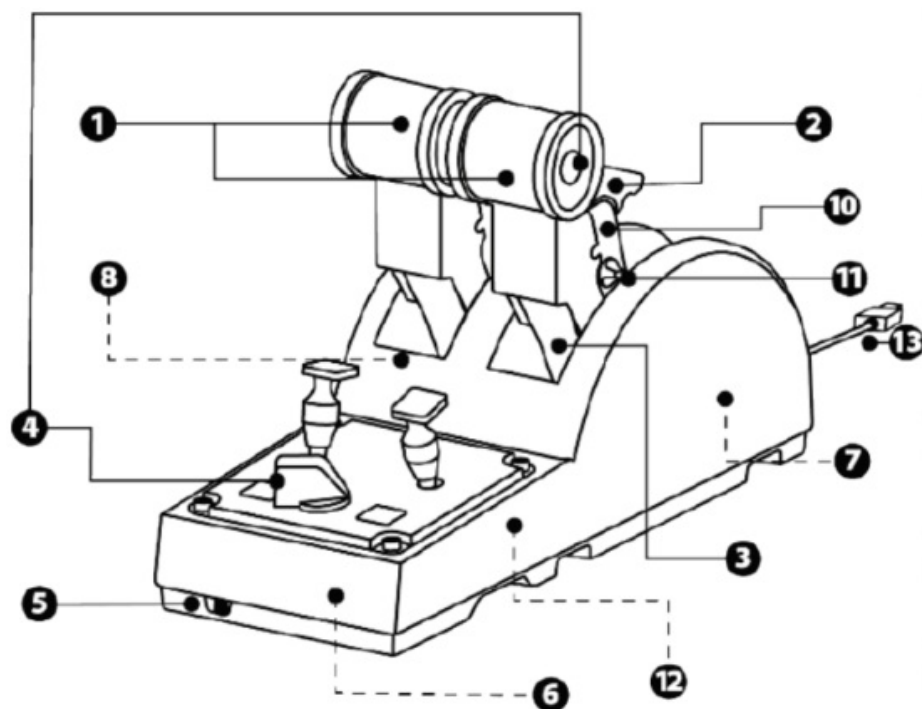
THRUSTMASTER TCA QUADRANT Airbus Edition User Manual



Contents

- [1 TECHNICAL FEATURES](#)
- [2 INSTALLATION ON PC](#)
- [3 ADJUSTING THE FRICTION](#)
- [4 TROUBLESHOOTING AND WARNING](#)
- [5 TECHNICAL SUPPORT](#)
- [6 Documents / Resources](#)
 - [6.1 References](#)
- [7 Related Posts](#)

TECHNICAL FEATURES



1. X and Y axes for throttle
2. Thrust reverser mechanism on each axis
3. 4 detents per axis — 4 virtual buttons per axis
4. 8 action buttons
5. **Selector switch for engines:** 1/2 or 3/4
6. SATA connectors for external TCA Quadrant Add-On Airbus Edition modules (add-on sold separately)
7. Connector for TFRP rudder system (sold separately)
8. Friction adjustment screw
9. USB connector (type C)
10. Crossbar location

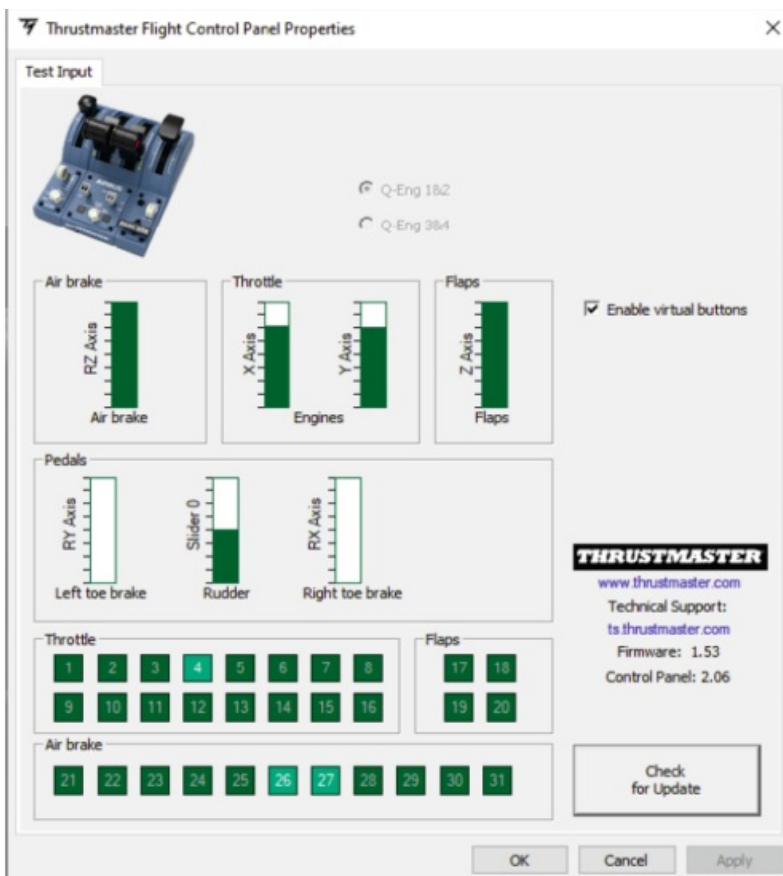
11. Mechanism for enabling/disabling thrust reverser on each axis
12. Mechanism for enabling/disabling detents on each axis
13. USB-A to USB-C cable*

*- Use only the USB cable (13) supplied with TCA Quadrant Airbus Edition.

- Do not use damaged cables.

INSTALLATION ON PC

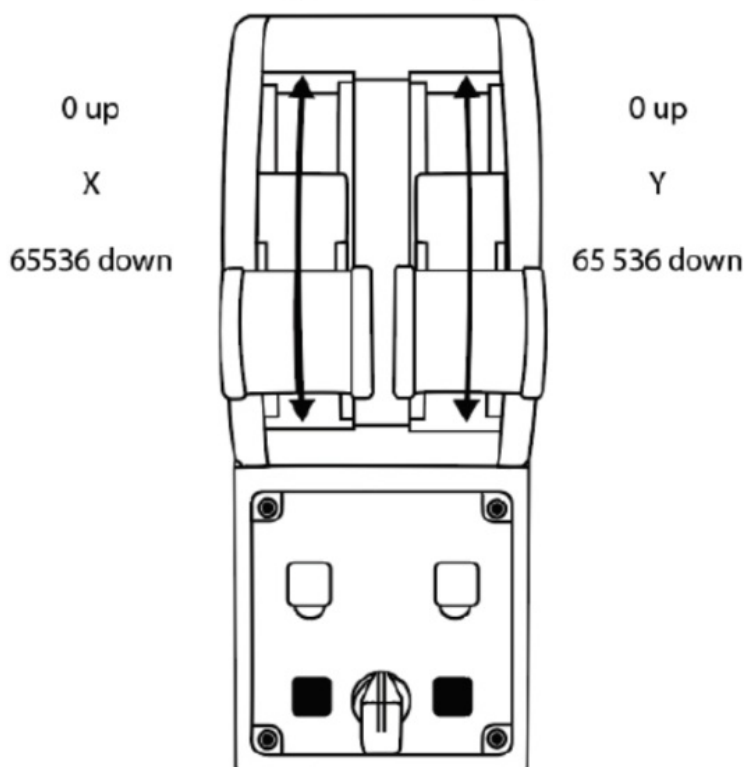
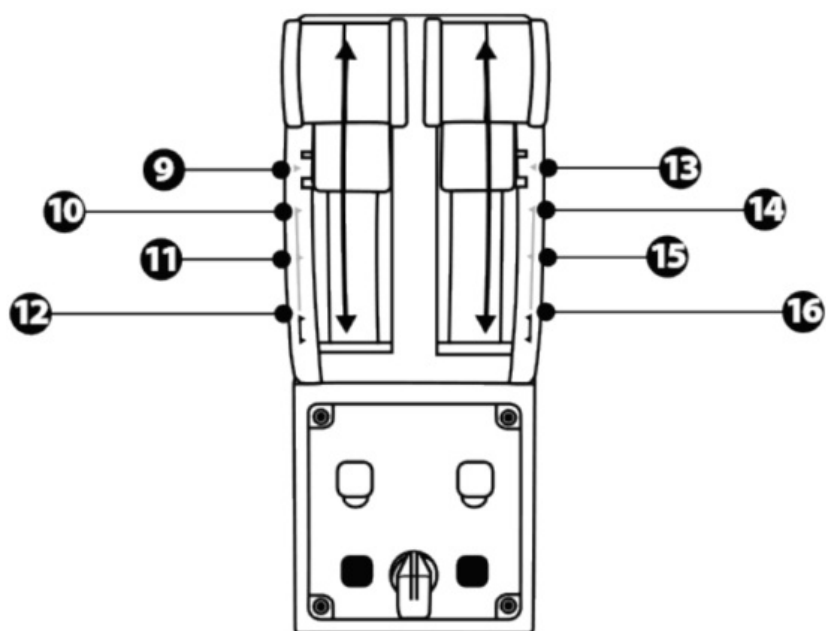
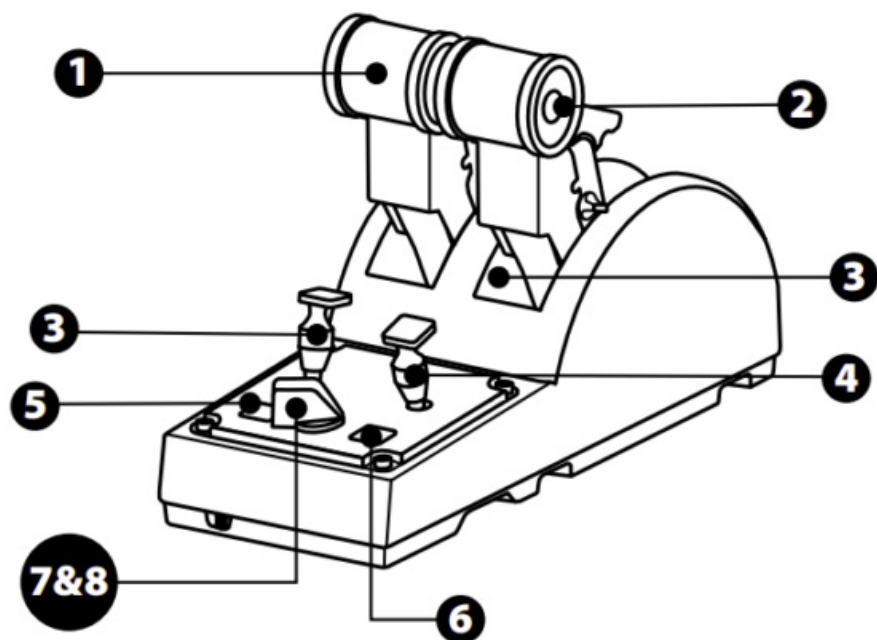
1. Please visit <https://support.thrustmaster.com/>. Click **Joysticks / TCA Quadrant Airbus Edition**, and select Drivers. Download and install the PC driver and its customized interface for the Windows Control Panel.
2. Once the PC driver has been installed, connect the device's USB connector to one of the USB ports on your PC.
3. To access the Control Panel, click **Start / Apps / Thrustmeter / Control Panel** (in Windows® 10 / 8.1 / 8).
*The **Game Controllers** dialog box appears.*
*The accessory is listed onscreen with the name **TCA Q-Eng. 1&2** (or **TCA Q-Eng. 3&4**, depending on the position of the selector switch for the engines [5]), along with **OK** status.*
4. In the **Game Controllers** dialog box, click **Properties** to test and view all features.

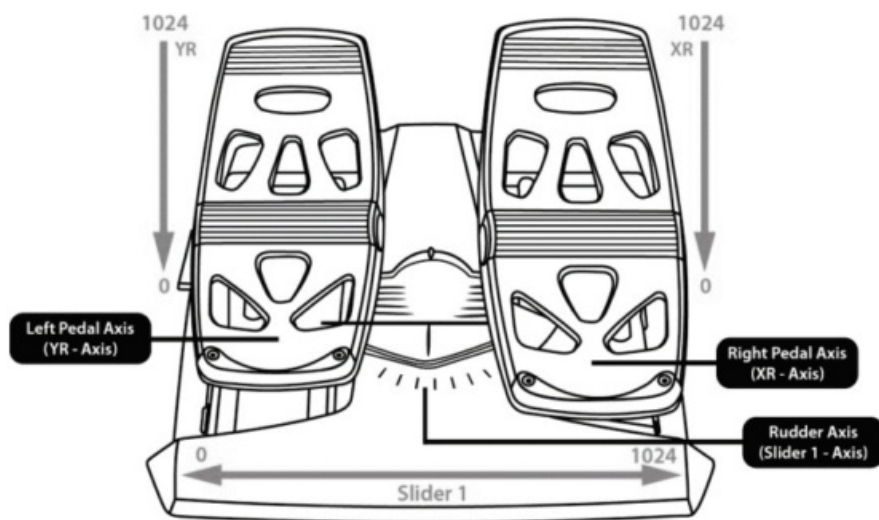


Enable virtual buttons: This feature allows to enable or disable the virtual buttons on the throttle's axes. Click Apply once you've selected your mode.

You are now ready to play!

MAPPING FOR THE 16 BUTTONS AND 2 AXES



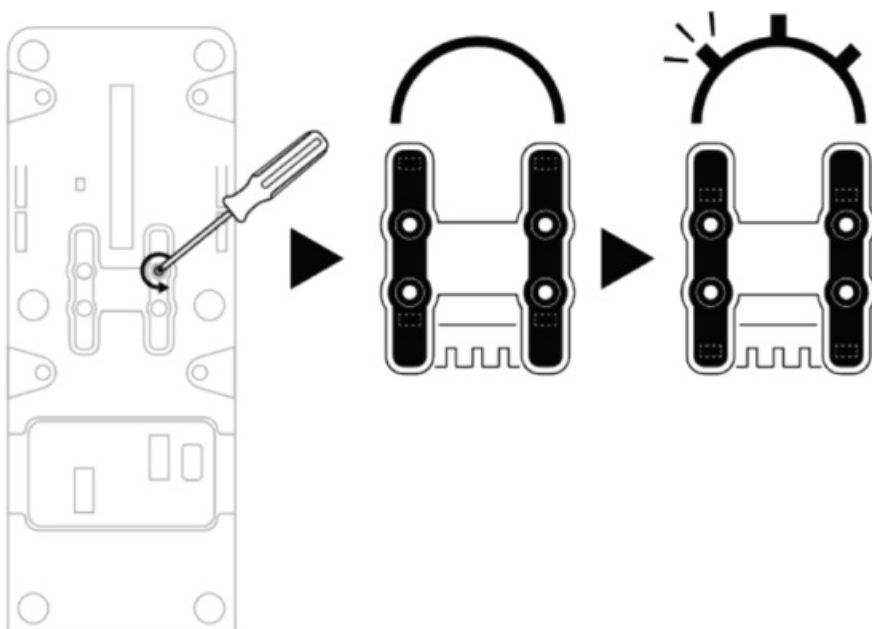


MAKING CHANGES TO THE AXES ON THE TCA QUADRANT AIRBUS EDITION THROTTLE QUADRANT

The TCA Quadrant Airbus Edition throttle quadrant features mechanical selectors allowing you to disable the detents/notches on each axis. Doing so allows you to have smooth axes, while maintaining virtual buttons 9 through 16.

This option lets you change the piloting sensations according to the type of aircraft being used in your simulation (commercial aircraft or civil aircraft).

1. Turn the TCA Quadrant Airbus Edition upside down, and unscrew the two screws for each of the selectors using a screwdriver with the corresponding head shape.
2. Switch the position of the selectors, using the indicators as a guide: this will let you choose either a smooth axis, or an axis with detents/notches, for each axis on the TCA Quadrant Airbus Edition throttle quadrant.

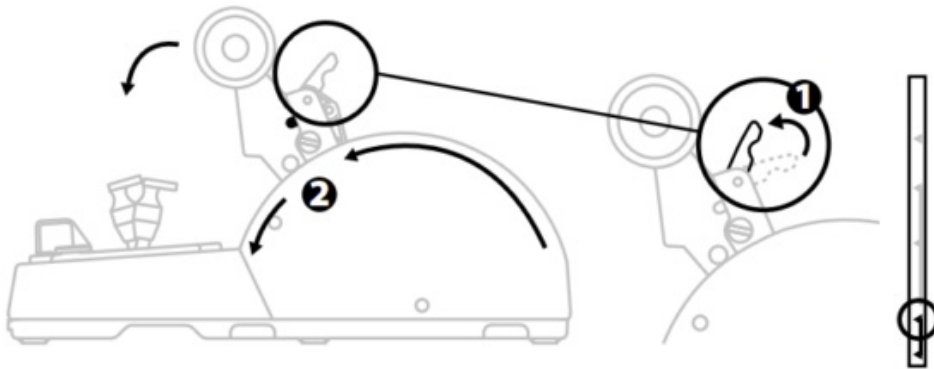


DISABLING THE THRUST REVERSERS ON THE TCA QUADRANT AIRBUS EDITION THROTTLE QUADRANT

The TCA Quadrant Airbus Edition throttle quadrant features functional thrust reversers, replicating those found on Airbus commercial aviation throttles. You can disable the thrust reverser mechanism, for piloting better suited to civil aviation.

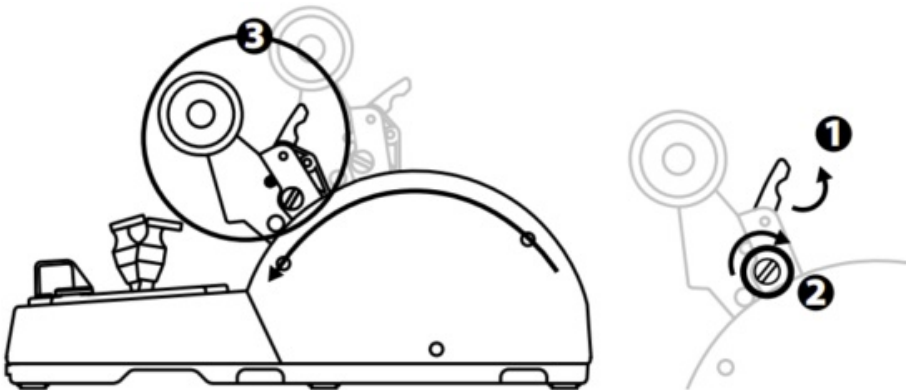
Commercial airliner mode:

1. At the stop, lift up the thrust reverser mechanism.
2. Moving past the stop lets you use the thrust reverser.

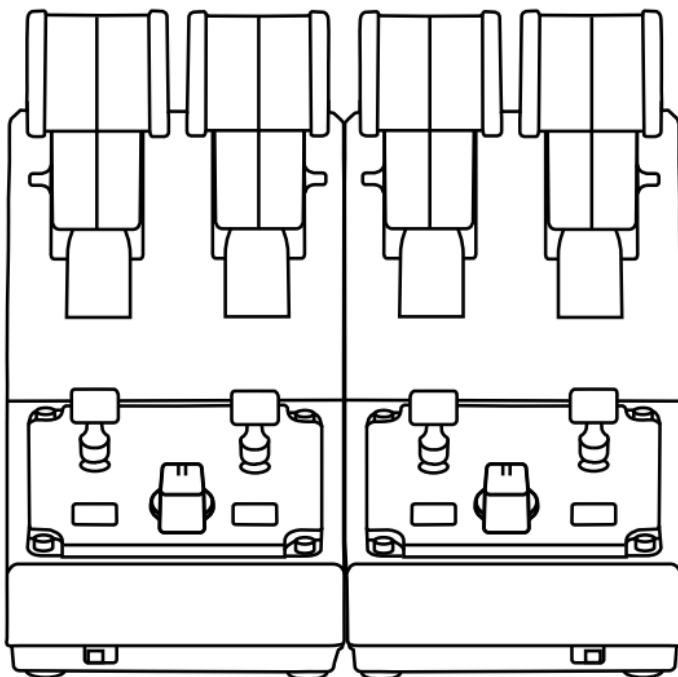


General and civil aviation mode:

1. Lift up the thrust reverser mechanism.
2. Turn the selector to position 0 to disable the thrust reverser mechanism.
3. The thrust lever can now move through the entire axis.

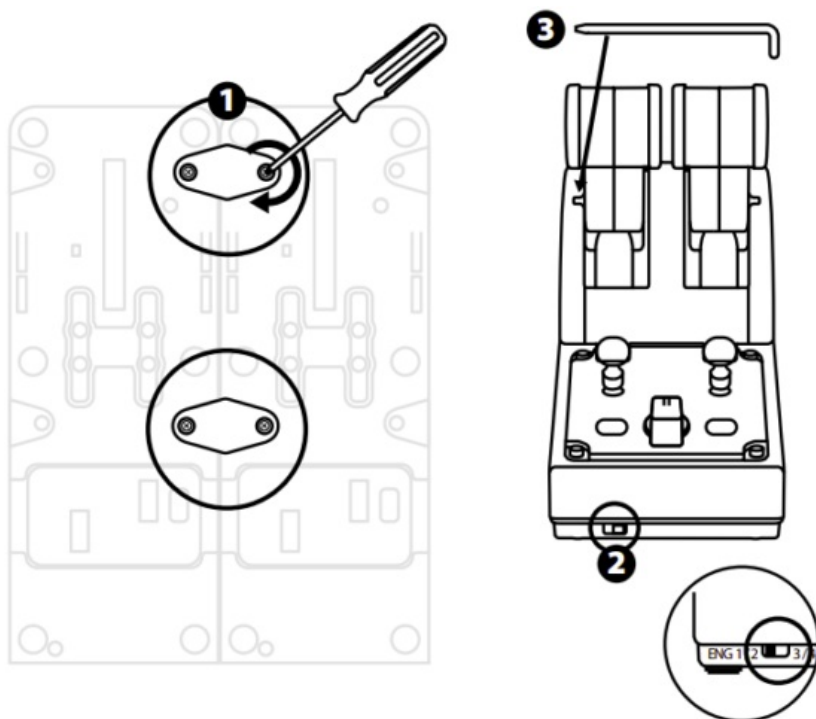


CONNECTING TWO TCA QUADRANT AIRBUS EDITION THROTTLE QUADRANTS

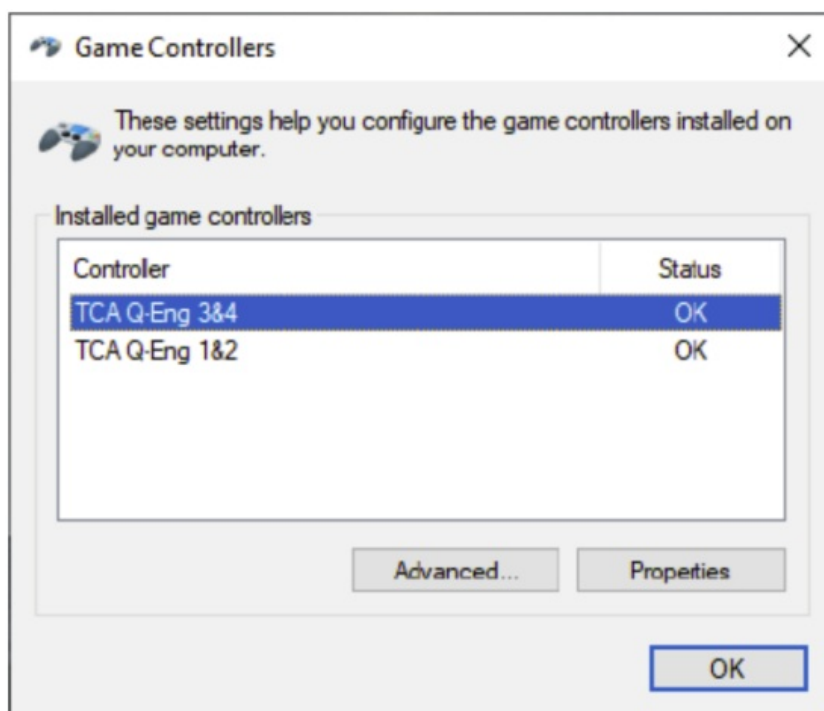


You can connect a second TCA Quadrant Airbus Edition throttle quadrant (sold separately):
this will allow you to use 4 axes in total, simulating a four-engine commercial airliner, for example.

1. Turn both TCA Quadrant Airbus Edition throttle quadrants upside down, and screw on the two attachment pieces included with the TCA Quadrant Airbus Edition to attach the two devices together.
2. On the second throttle quadrant, physically set the selector switch to 3/4 in order to associate engines 3 and 4 with the second throttle quadrant (in the Control Panel on PC).
3. Connect the axes together by pair (1/2 and 3/4) to make them easier to move in unison, using the crossbar included with each TCA Quadrant Airbus Edition.

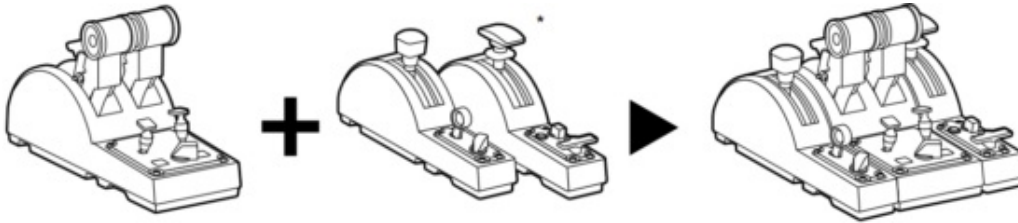


4. When both devices are connected to your PC via USB, they appear independently in the **Game Controllers** dialog box:



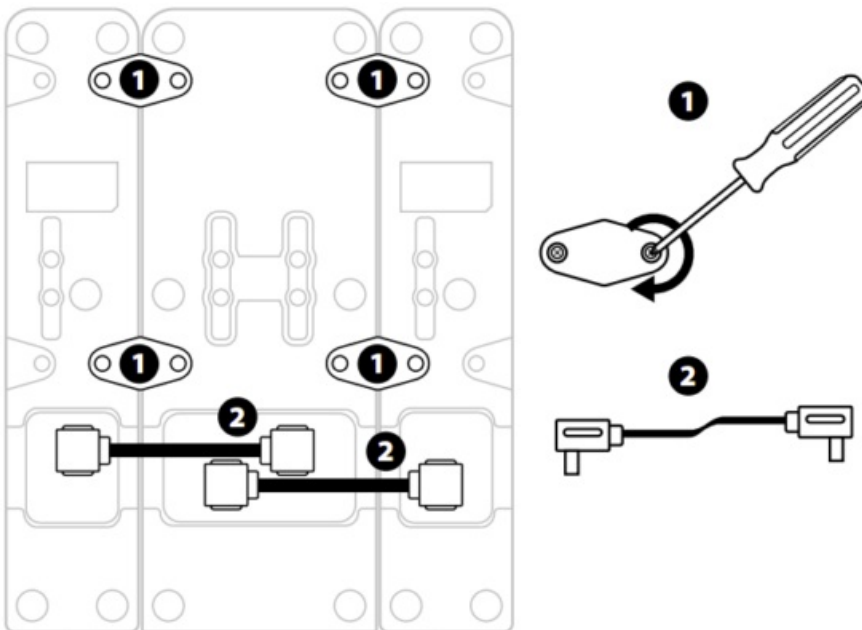
CONNECTING THE TCA QUADRANT AIRBUS EDITION THROTTLE QUADRANT TO THE TCA QUADRANT ADD-ON AIRBUS EDITION*


* Sold separately



The TCA Quadrant Airbus Edition throttle quadrant lets you connect the additional TCA Quadrant Add-On Airbus Edition modules (sold separately) on both sides of the TCA Quadrant Airbus Edition. This modularity adds new axes and action buttons and lets you expand the takeoff, in-flight and landing kinematics for the TCA Quadrant Airbus Edition throttle quadrant.

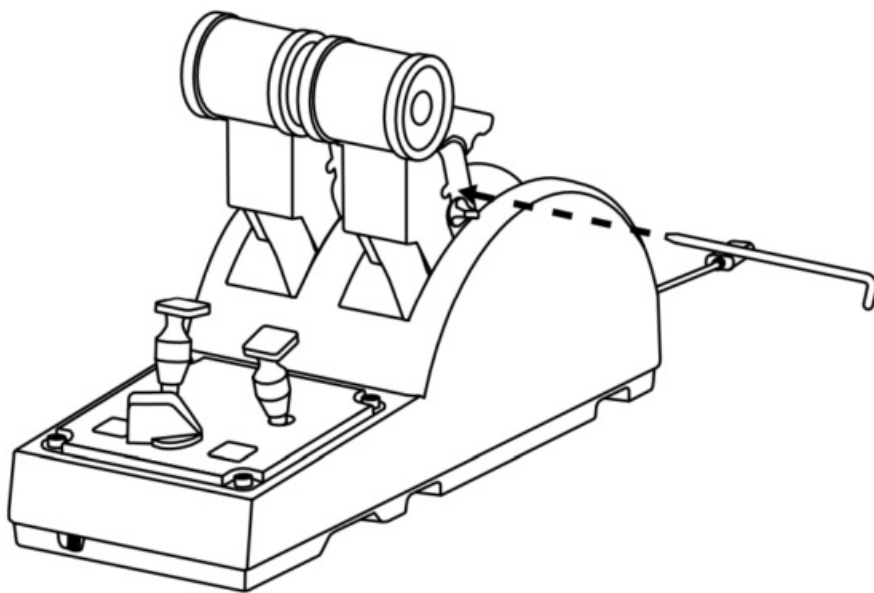
1. Turn the TCA Quadrant Airbus Edition throttle quadrant and the two additional TCA Quadrant Add-On Airbus Edition modules upside down, and (using a screwdriver with the corresponding head shape) screw on the four attachment pieces included with the TCA Quadrant Airbus Edition throttle quadrant and the TCA Quadrant Add-On Airbus Edition, attaching all three devices together: the Speed brake module to the left of the TCA Quadrant Airbus Edition, and the Flaps module to the right.
2. Connect the SATA cables included with the TCA Quadrant Add-On Airbus Edition to the SATA connectors on the TCA Quadrant Airbus Edition.



-  To avoid damaging the products, use a screwdriver with the corresponding head shape to tighten/untighten the screws.
- Only use the official cables provided by Thrustmeter.

ATTACHING/SEPARATING THE TWO THRUST LEVERS

Use the crossbar included with the TCA Quadrant Airbus Edition throttle quadrant to connect the two thrust levers together.

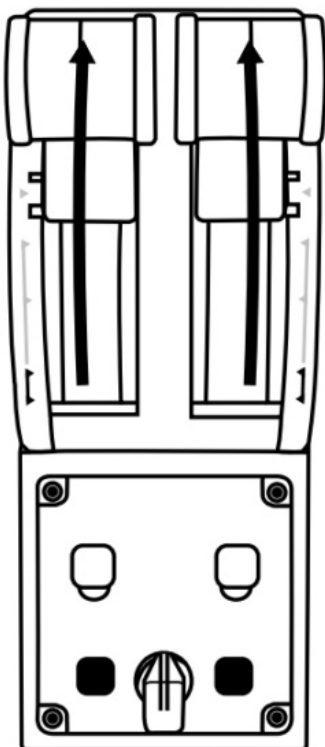


ADJUSTING THE FRICTION

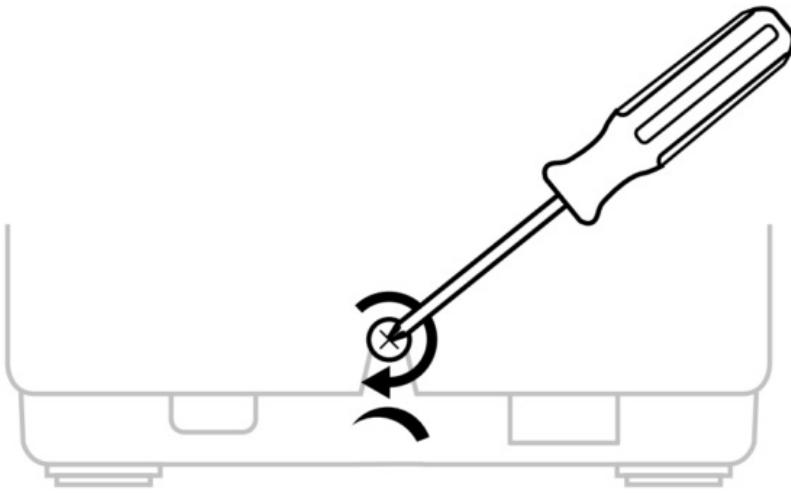
IMPORTANT NOTES:

- The friction for the two thrust levers is set to 50% by default.
- In order to allow for precise adjustment according to your preferences, you can use a screwdriver with the corresponding head shape — or the included crossbar — to turn the friction adjustment screw.

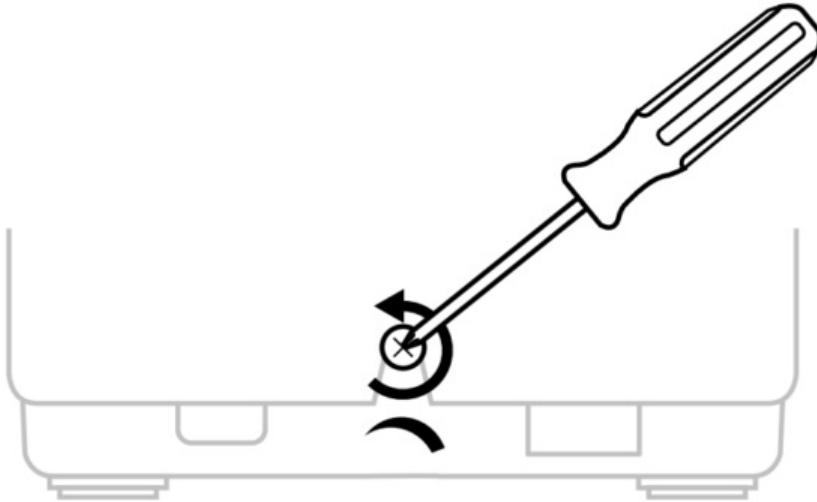
1. Push both thrust levers forward to their maximum values, and then access the friction adjustment screw at the back of the TCA Quadrant Airbus Edition.




2. To increase the friction, turn the friction adjustment screw clockwise.



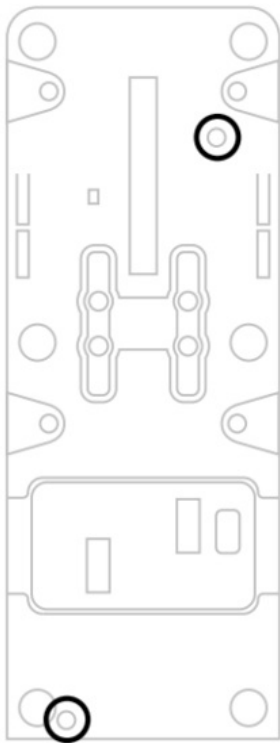
3. To decrease the friction, turn the friction adjustment screw counterclockwise.



-  To avoid damaging the friction system, be careful not to over-tighten the adjustment screw: stop turning the screw when you feel resistance.
- Never completely unscrew the adjustment screw, to avoid the screw falling inside the body of the TCA Quadrant Airbus Edition.

ATTACHING THE TCA QUADRANT AIRBUS EDITION THROTTLE QUADRANT TO A COCKPIT OR OTHER STATIONARY SURFACE

You can use the two perforations located on the underside of the TCA Quadrant Airbus Edition to attach it to a cockpit or other stationary surface, using M6 screws (not included).



CONNECTING THE TFRP* RUDDER SYSTEM TO THE TCA QUADRANT AIRBUS EDITION THROTTLE QUADRANT

** Sold separately*

The TCA Quadrant Airbus Edition throttle quadrant has 7 axes, with 3 of these axes being reserved for the TFRP rudder system.

The TFRP rudder system connects directly to the TCA Quadrant Airbus Edition throttle quadrant.

1. Connect the male RJ12 connector for the TFRP rudder system to the female RJ12 connector located at the back of the TCA Quadrant Airbus Edition throttle quadrant.
2. Connect the USB connector for the TCA Quadrant Airbus Edition throttle quadrant to one of the USB ports on your PC.

Important notes regarding automatic calibration of axes:

- Always leave the rudder axis centered when connecting the TFRP rudder system to the TCA Quadrant Airbus Edition throttle quadrant: never put your feet on the TFRP rudder system's pedals when doing so.
- The pedals' 3 axes automatically calibrate themselves after a few movements, and after having reached the physical stops for the rudder axis and the 2 differential brake axes.

T.A.R.G.E.T ADVANCED PROGRAMMING SOFTWARE

(Thrustmaster Advanced pProgramming Graphical EdiTor)

Please [visit https://support.thrustmaster.com](https://support.thrustmaster.com). Click **Joysticks / TCA Quadrant Airbus Edition**, then select **Software**. Download and install the T.A.R.G.E.T advanced programming software.

Main features of T.A.R.G.E.T

- Different possible configurations for the axes.

- Different possible programming levels: Basic, Advanced and Script.
- Use of the Drag and Drop principle.
- Ability to combine the TCA Quadrant Airbus Edition throttle quadrant with various Thrustmeter joysticks (HOTAS Cougar, HOTAS Warthog, T.16000M, MFD Cougar Pack, all of which are also compatible with T.A.R.G.E.T.), allowing them to be recognized as a single USB device.
- Access to advanced profiles created by the Thrustmeter community.



TROUBLESHOOTING AND WARNING

- **My TCA Quadrant Airbus Edition throttle quadrant isn't working properly, or seems to be improperly calibrated.**
 - Power off your PC, and disconnect the USB connector for the TCA Quadrant Airbus Edition throttle quadrant. Then reconnect the USB connector, power on your PC again, and restart your game.
 - When connecting the USB connector for the TCA Quadrant Airbus Edition throttle quadrant, always leave the rudder axis centered if you are using the TFRP rudder system (sold separately): never put your feet on the TFRP rudder system's pedals when doing so.
- **I can't configure my TCA Quadrant Airbus Edition throttle quadrant.**
 - In your game's Options / Controller / Gamepad or Joystick menu, select the appropriate configuration or completely reconfigure the controller's options.
 - For more information, please refer to your game's user manual or online help.
 - Use the T.A.R.G.E.T (Thrustmaster Advanced pRogramming Graphical EdiTor) advanced programming software.
- **My TCA Quadrant Airbus Edition throttle quadrant is too sensitive, or not sensitive enough.**
 - The axes for the TCA Quadrant Airbus Edition throttle quadrant automatically calibrate themselves after a few movements, and after having reached the physical stops for the axes.
 - In your game's Options / Controller / Gamepad or Joystick menu, adjust the sensitivity and dead zones for your controller (if these options are available).
 - Use the T.A.R.G.E.T (Thrustmaster Advanced pRogramming Graphical EdiTor) advanced programming software.



This device is intended for use with respect to gaming entertainment purposes only. It is strictly forbidden to use this device for professional training activities.

CONSUMER WARRANTY INFORMATION

Worldwide, Guillemot Corporation S.A., whose registered office is located at Place du Garnier, B.P. 97143, 35571 Chantepie, France (hereinafter “Guillemot”) warrants to the consumer that this Thrustmaster product shall be free from defects in materials and workmanship, for a warranty period which corresponds to the time limit to bring an action for conformity with respect to this product. In the countries of the European Union, this corresponds to a period of two (2) years from delivery of the Thrustmaster product.

In other countries, the warranty period corresponds to the time limit to bring an action for conformity with respect to the Thrustmaster product according to applicable laws of the country in which the consumer was domiciled on the date of purchase of the Thrustmaster product (if no such action exists in the corresponding country, then the warranty period shall be one (1) year from the original date of purchase of the Thrustmaster product).

Notwithstanding the above, rechargeable batteries are covered by a warranty period of six (6) months from the date of original purchase.

Should the product appear to be defective during the warranty period, immediately contact Technical Support, who will indicate the procedure to follow. If the defect is confirmed, the product must be returned to its place of purchase (or any other location indicated by Technical Support).

Within the context of this warranty, the consumer's defective product shall, at Technical Support's option, be either replaced or returned to working order. If, during the warranty period, the Thrustmaster product is subject to such reconditioning, any period of at least seven (7) days during which the product is out of use shall be added to the remaining warranty period (this period runs from the date of the consumer's request for intervention or from the date on which the product in question is made available for reconditioning, if the date on which the product is made available for reconditioning is subsequent to the date of the request for intervention). If permitted under applicable law, the full liability of Guillemot and its subsidiaries (including for consequential damages) is limited to the return to working order or the replacement of the Thrustmaster product. If permitted under applicable law, Guillemot disclaims all warranties of merchantability or fitness for a particular purpose.

This warranty shall not apply: (1) if the product has been modified, opened, altered, or has suffered damage as a result of inappropriate or abusive use, negligence, an accident, normal wear, or any other cause unrelated to a material or manufacturing defect (including, but not limited to, combining the Thrustmaster product with any unsuitable element, including in particular power supplies, rechargeable batteries, chargers, or any other elements not supplied by Guillemot for this product); (2) if the product has been used for any use other than home use, including for professional or commercial purposes (game rooms, training, competitions, for example); (3) in the event of failure to comply with the instructions provided by Technical Support; (4) to software, said software being subject to a specific warranty; (5) to consumables (elements to be replaced over the product's lifespan: disposable batteries, audio headset or headphone ear pads, for example); (6) to accessories (cables, cases, pouches, bags, wrist-straps, for example); (7) if the product was sold at public auction.

This warranty is nontransferable.

The consumer's legal rights with respect to laws applicable to the sale of consumer goods in his or her country are not affected by this warranty.

Additional warranty provisions

During the warranty period, Guillemot shall not provide, in principle, any spare parts, as Technical Support is the only party authorized to open and/or recondition any Thrustmeter product (with the exception of any reconditioning procedures which Technical Support may request that the consumer carry out, by way of written instructions – for example, due to the simplicity and the lack of confidentiality of the reconditioning process – and by providing the consumer with the required spare part(s), where applicable).

Given its innovation cycles and in order to protect its know-how and trade secrets, Guillemot shall not provide, in principle, any reconditioning notification or spare parts for any Thrustmeter product whose warranty period has expired.

In the United States of America and in Canada, this warranty is limited to the product's internal mechanism and external housing. In no event shall Guillemot or its affiliates be held liable to any third party for any consequential or incidental damages resulting from the breach of any express or implied warranties. Some States/Provinces do not allow limitation on how long an implied warranty lasts or exclusion or limitation of liability for consequential or incidental damages, so the above limitations or exclusions may not apply to you. This warranty gives you specific legal rights, and you may also have other rights which vary from State to State or Province to Province.

Liability

If permitted under applicable law, Guillemot Corporation S.A. (hereinafter “Guillemot”) and its subsidiaries disclaim all liability for any damages caused by one or more of the following: (1) the product has been modified, opened or

altered; (2) failure to comply with assembly instructions; (3) inappropriate or abusive use, negligence, an accident (an impact, for example); (4) normal wear; (5) the use of the product for any use other than home use, including for professional or commercial purposes (game rooms, training, competitions, for example). If permitted under applicable law, Guillemot and its subsidiaries disclaim all liability for any damages unrelated to a material or manufacturing defect with respect to the product (including, but not limited to, any damages caused directly or indirectly by any software, or by combining the Thrustmeter product with any unsuitable element, including in particular power supplies, rechargeable batteries, chargers, or any other elements not supplied by Guillemot for this product).

DECLARATION OF CONFORMITY

CANADIAN COMPLIANCE NOTICE: this Class B digital apparatus meets all requirements of the Canadian Interference-Causing Equipment Regulations.

USA COMPLIANCE NOTICE: this equipment has been tested and found to comply with the limits for a Class B digital device, pursuant to Part 15 of the FCC rules. Operation is subject to the following two conditions:

1. This device may not cause harmful interference, and
2. This device must accept any interference received, including interference that may cause undesired operation

These limits are designed to provide reasonable protection against harmful interference in a residential installation. This equipment generates, uses and can radiate radio frequency energy and, if not installed and used in accordance with the instructions, may cause harmful interference to radio communications. However, there is no guarantee that interference will not occur in a particular installation. If this equipment does cause harmful interference to radio or television reception, which can be determined by turning the equipment on and off, the user is encouraged to try to correct the interference by one or more of the following measures:

- Reorient or relocate the receiving antenna.
- Increase the separation between the equipment and receiver.
- Connect the equipment into an outlet on a circuit different from that to which the receiver is connected.
- Consult the dealer or an experienced radio/TV technician for help.

COPYRIGHT

© 2024 Guillemot Corporation S.A. All rights reserved. Thrustmeter® is a registered trademark of Guillemot Corporation S.A. Windows® is a registered trademark of Microsoft Corporation in the United States and/or other countries.

AIRBUS, its logo and product and service marks are registered trademarks of Airbus. All rights reserved.

© Airbus 2022. All rights reserved. Officially licensed by Airbus.

All other trademarks and brand names are hereby acknowledged and are property of their respective owners. Illustrations not binding. Contents, designs and specifications are subject to change without notice and may vary from one country to another. Made in China.

WARNING: this product can expose you to chemicals including Bisphenol A (BPA), which is known to the State of California to cause birth defects or other reproductive harm.

For more information go to www.P65Warnings.ca.gov

ENVIRONMENTAL PROTECTION RECOMMENDATION



In the European Union: At the end of its working life, this product should not be disposed of with standard household waste, but rather dropped off at a collection point for the disposal of Waste Electrical and Electronic Equipment (WEEE) for recycling.

This is confirmed by the symbol found on the product, user manual or packaging.
Depending on their characteristics, the materials may be recycled. Through recycling and other forms of processing Waste Electrical and Electronic Equipment, you can make a significant contribution towards helping to protect the environment.
Please contact your local authorities for information on the collection point nearest you.
For all other countries: Please adhere to local recycling laws for electrical and electronic equipment.

Retain this information. Colors and decorations may vary.
Plastic fasteners and adhesives should be removed from the product before it is used.
This product conforms to all standards regarding children 14 years of age and older. This product is not suitable for use by children less than 14 years of age.

www.thrustmaster.com

**Applicable to EU, UK and Turkey only*

Symbols



TECHNICAL SUPPORT

<https://support.thrustmaster.com>



THRUSTMASTER®

Documents / Resources

<p>Europe, Middle East FRANCE GERMANY NETHERLANDS POLAND PORTUGAL RUSSIA SPAIN UNITED KINGDOM USA CANADA AUSTRALIA NEW ZEALAND SOUTH AFRICA INDONESIA MALAYSIA SINGAPORE THAILAND VIETNAM JAPAN KOREA CHINA HONG KONG TAIWAN PHILIPPINES INDONESIA MALAYSIA SINGAPORE THAILAND VIETNAM JAPAN KOREA CHINA HONG KONG TAIWAN PHILIPPINES</p> <p>THRUSTMASTER®</p> <p>TCA QUADRANT AIRBUS EDITION</p>	<p>THRUSTMASTER TCA QUADRANT Airbus Edition [pdf] User Manual TCA QUADRANT Airbus Edition, TCA QUADRANT, Airbus Edition, Edition</p>
---	---

References

- [Thrustmaster – Technical support website](#)
- [Thrustmaster – Technical support website](#)
- [P65Warnings.ca.gov](https://www.p65warnings.ca.gov/)
- [Thrustmaster | Wheels, Joysticks and Gamepads for video games](#)
- [Thrustmaster – Technical support website](#)
- [Thrustmaster – Technical support website](#)
- [Thrustmaster –](#)
- [Thrustmaster — Сайт техподдержки](#)
- [User Manual](#)

Manuals+. Privacy Policy

This website is an independent publication and is neither affiliated with nor endorsed by any of the trademark owners. The "Bluetooth®" word mark and logos are registered trademarks owned by Bluetooth SIG, Inc. The "Wi-Fi®" word mark and logos are registered trademarks owned by the Wi-Fi Alliance. Any use of these marks on this website does not imply any affiliation with or endorsement.