



# THRUSTMASTER T128 SimTask Steering Kit User Manual

[Home](#) » [THRUSTMASTER](#) » THRUSTMASTER T128 SimTask Steering Kit User Manual 



## Contents

- [1 T128 SimTask Steering Kit](#)
- [2 Box contents](#)
- [3 Information regarding use](#)
- [4 Mounting SimTask Steering Kit](#)
- [5 Installation on a support](#)
- [6 Installing a T248 racing wheel on SimTask Steering Kit](#)
- [7 FAQ and technical support](#)
- [8 Documents / Resources](#)
  - [8.1 References](#)

## T128 SimTask Steering Kit

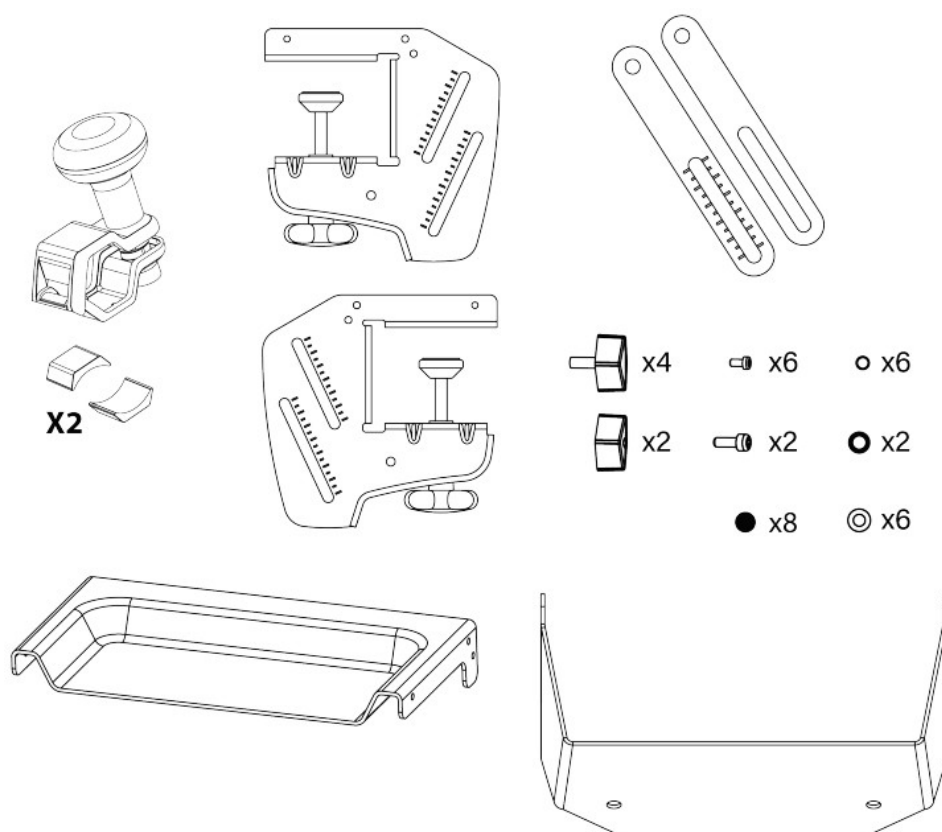


**Carefully** read the instructions provided in this manual before installing the product, before any use of the product and before any maintenance. Be sure to follow the safety instructions. Failure to follow these instructions may result in accidents and/or damage. Keep this manual so that you can refer to the instructions in the future.

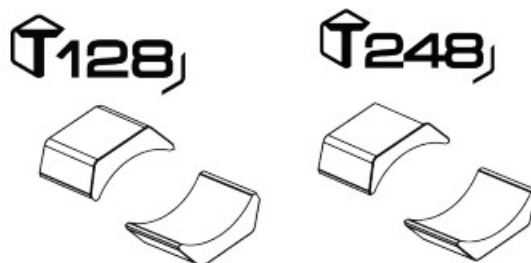
Thanks to SimTask Steering Kit adapt your driving position to any type of vehicle, with the adjustable system of inclination.

This manual will help you install and use your SimTask Steering Kit under the best conditions. Before starting, make sure to carefully read all of these instructions and warnings: they will help you get the most enjoyment out of your product.

## Box contents



Two sets of pads are supplied with the spinner knob: one set for the T128 racing wheel\*, the other set for the T248 racing wheel\*, each with a specific thickness and marking (T128 or T248).



## Information regarding use



### Documentation

Before using this product, carefully read this documentation again, and keep it for future reference.



### Securing the gaming area

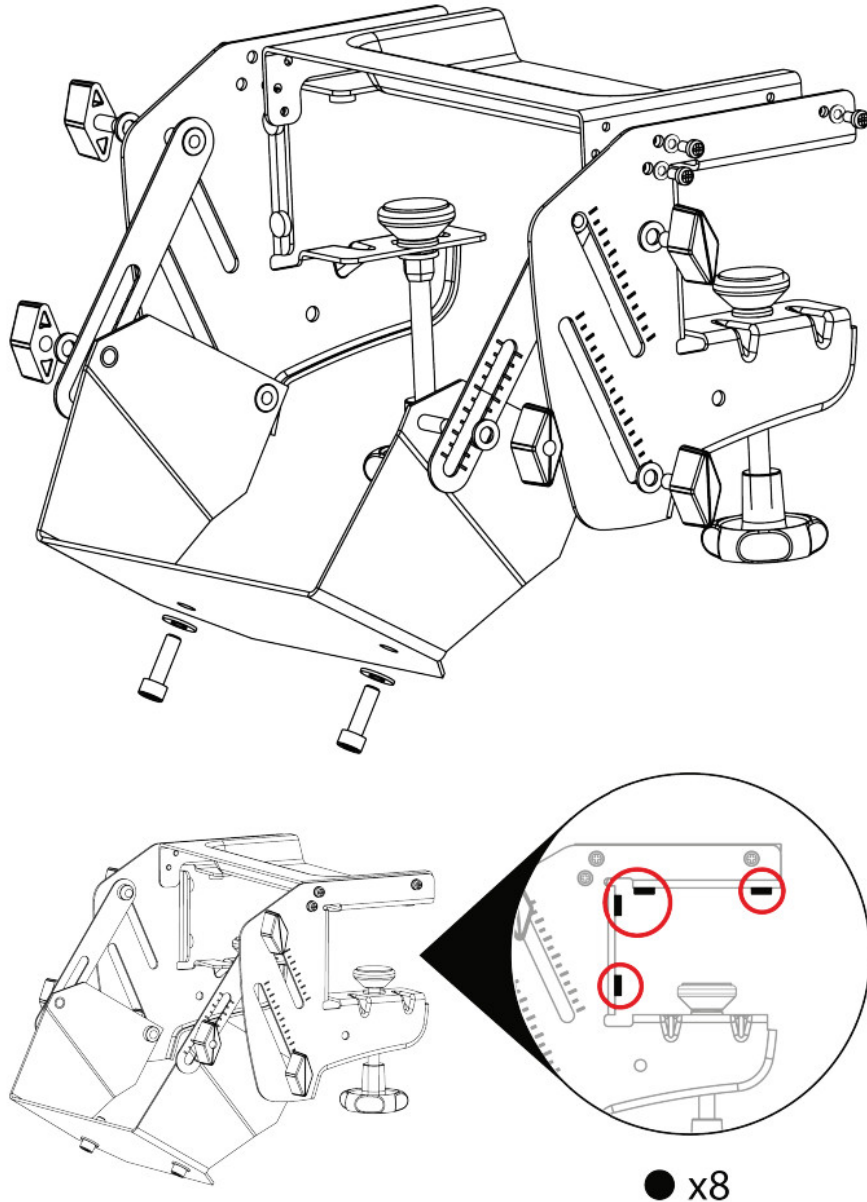
- Do not place any object in the gaming area which may disrupt the practice of the user, or which may provoke an inappropriate movement or an interruption by another person (coffee cup, telephone, keys, for example).
- Do not cover the power cables with a carpet or rug, blanket or covering or any other item, and do not place any cables where people will be walking.



### Risk of collision

When the racing wheel is powered on (plugged into a power outlet + USB port), the initialization of the force feedback causes the racing wheel to rotate, which may present a risk of collision when the spinner knob is mounted.

### Mounting SimTask Steering Kit



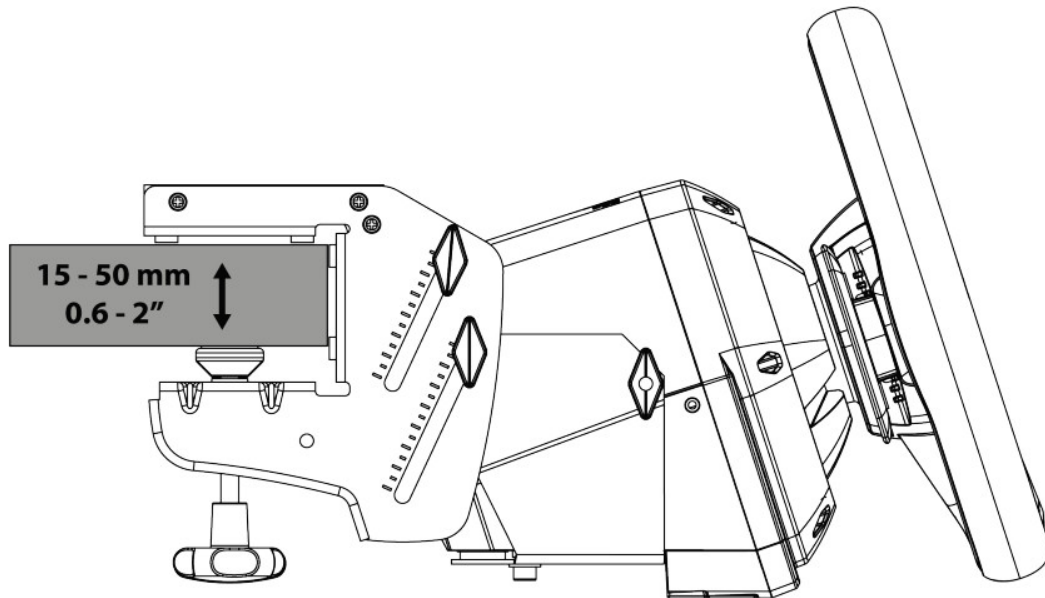
- Use only parts and screws supplied with your product.
- Assemble all components as shown in the diagram.
- During assembly, make sure that all parts are securely fastened.
- Once assembly is complete, check that all components are secure and that there is no play.
- Be careful not to overtighten the screws.

## Installation on a support

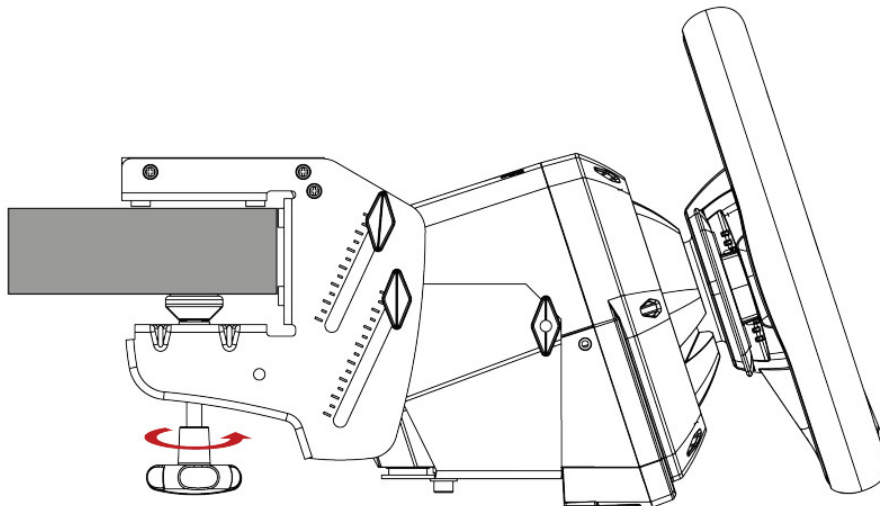


Before each use, verify that SimTask Steering Kit is still properly attached to the support (table, desk or shelf), as per this manual's instructions.

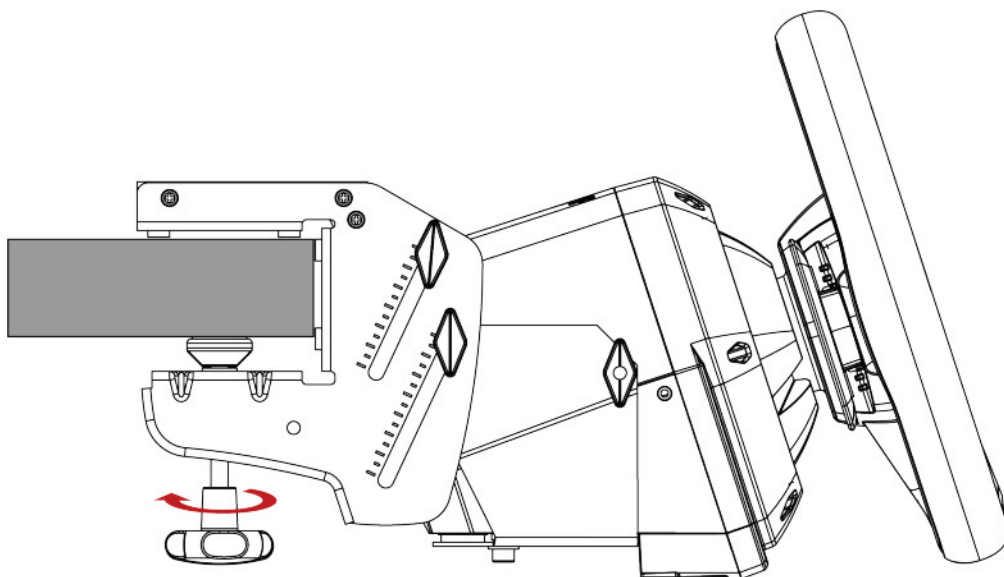
### Attaching SimTask Steering Kit to a table, a desk or a shelf



The clamping system is suitable for tables, desks and shelves whose thickness is between 15 and 50 mm (0.6 and 2").



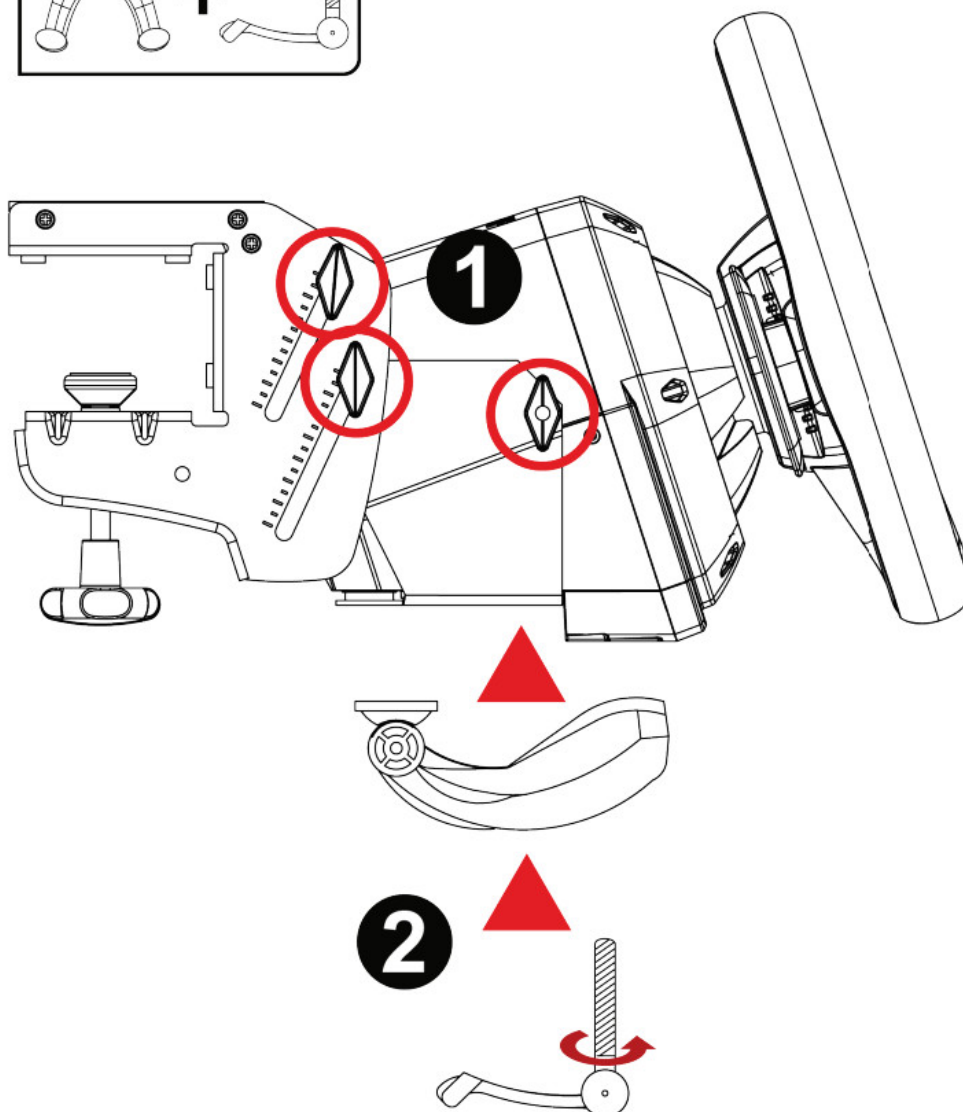
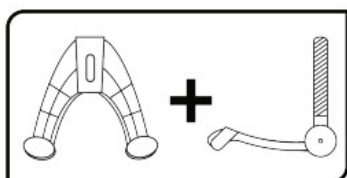
– To tighten: turn both knobs counterclockwise.



– To loosen: turn both knobs clockwise.



To avoid damaging the clamping system or the support, stop screwing when you feel a strong resistance.



1. Place the T128 racing wheel on the SimTask Steering Kit shelf and tighten the side screws to hold the racing wheel in position.
2. Insert the fastening screw in the clamp, then tighten the device by turning the screw counterclockwise, so that it feeds into the threaded hole located beneath the racing wheel, until the wheel is perfectly stable.



The clamp and the fastening screw are provided with the T128 racing wheel. For more information on attaching the racing wheel, please refer to the T128 user manual.

**Xbox One/Xbox Series/PC version:**

<https://support.thrustmaster.com/product/t128x/>

**PS4™/PS5™/PC version:**

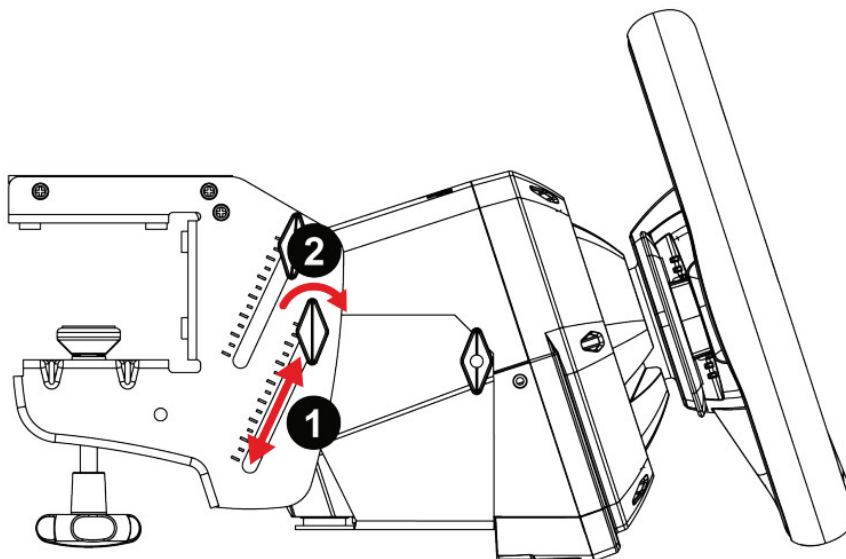
<https://support.thrustmaster.com/product/t128-ps/>



Never tighten the fastening screw alone without the clamp in place. This could damage the racing wheel.

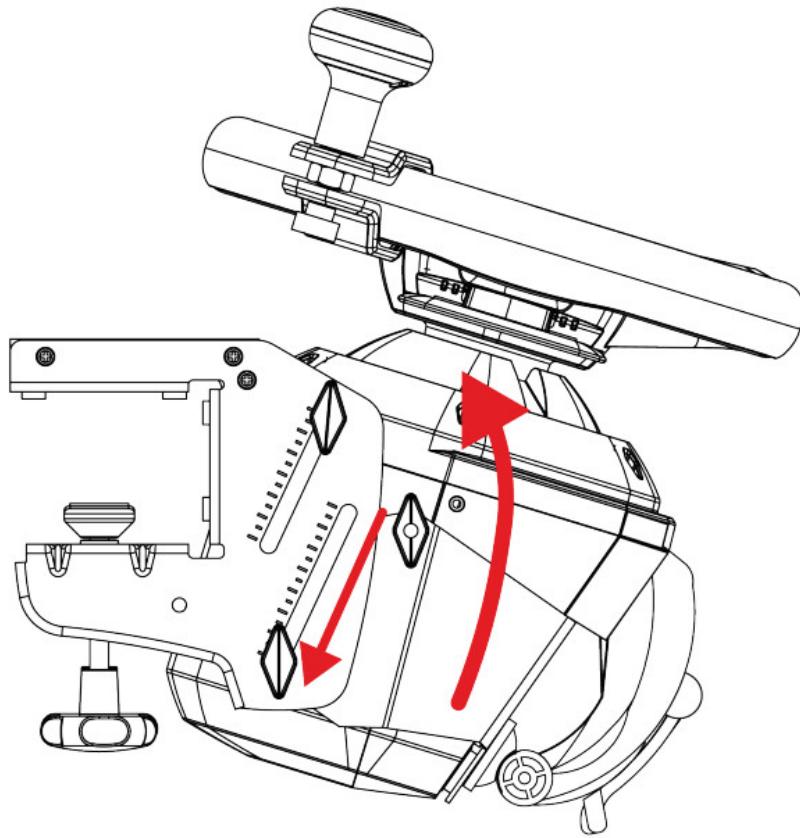
### Adjusting the inclination of the racing wheel

SimTask Steering Kit features sliding side rails that let you adjust precisely the inclination of the racing wheel to suit the type of vehicle you're driving.

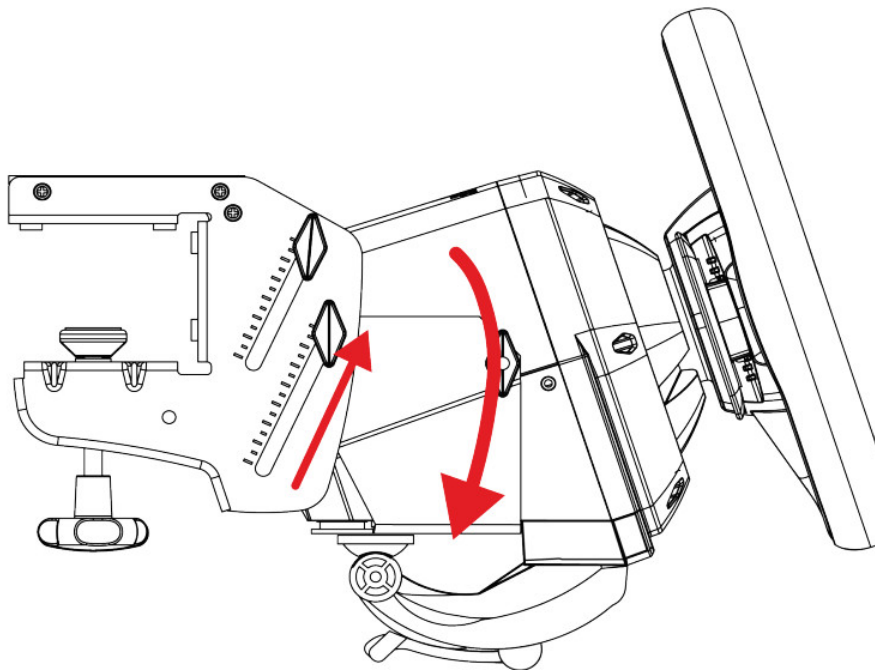


1. Loosen the side screws and slide them up or down to adjust the inclination of the racing wheel.
2. Tighten the side screws when you are satisfied with the inclination.



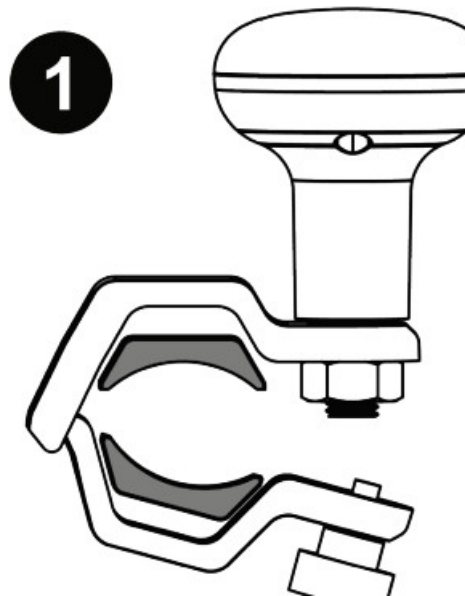


**Position for farm or construction machinery, truck, bus, with the spinner knob installed**



**Position for racing**

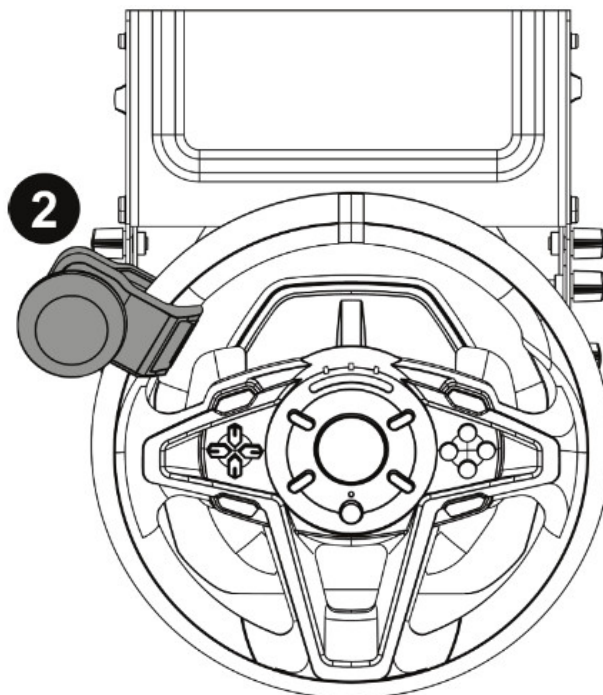
**Installing the spinner knob on the rim**



1. Insert a set of pads in the attachment system of the spinner knob.

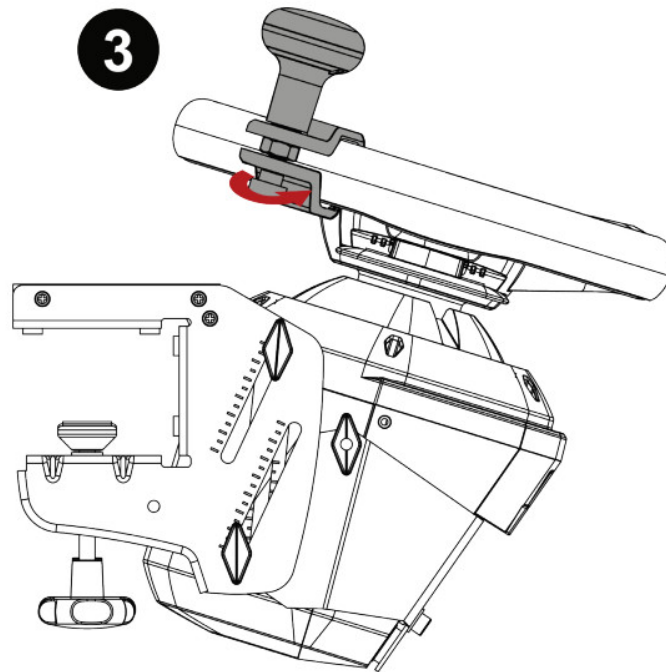


Use the set of pads corresponding to your T128 racing wheel.



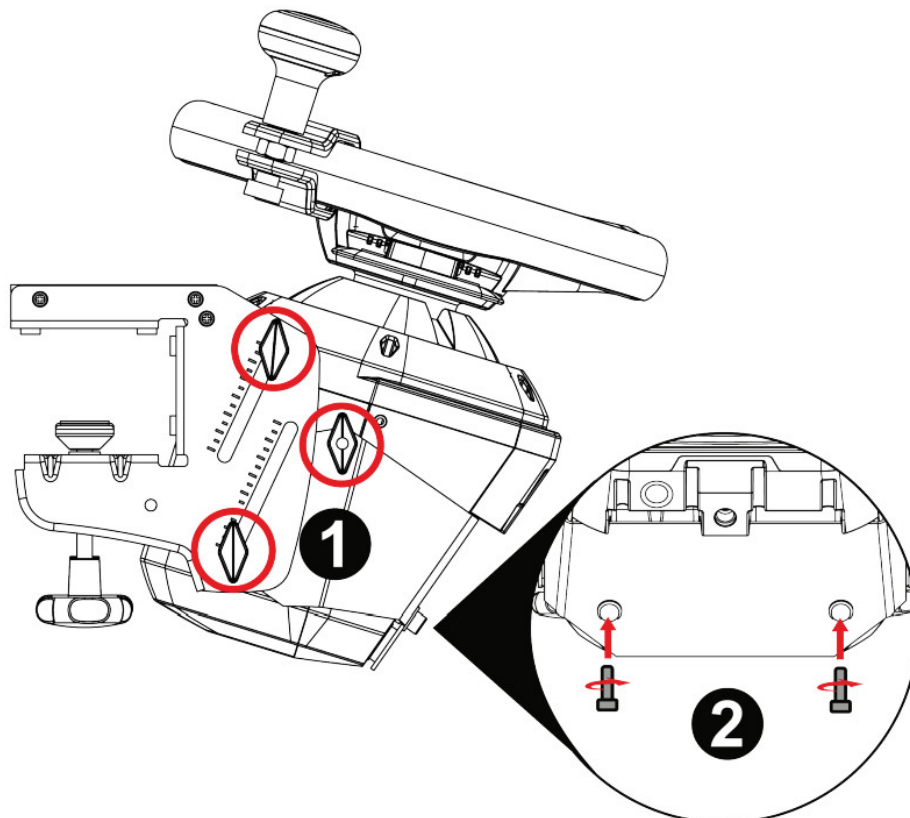
2. Place the attachment system of the spinner knob in the desired position on the rim.





3. Tighten the fastening system.

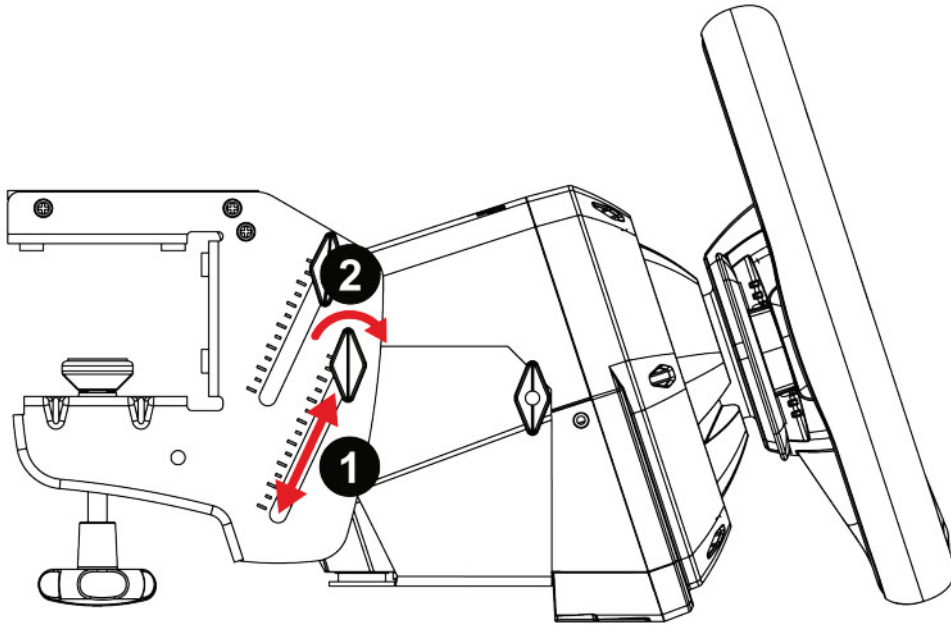
### Installing a T248 racing wheel on SimTask Steering Kit



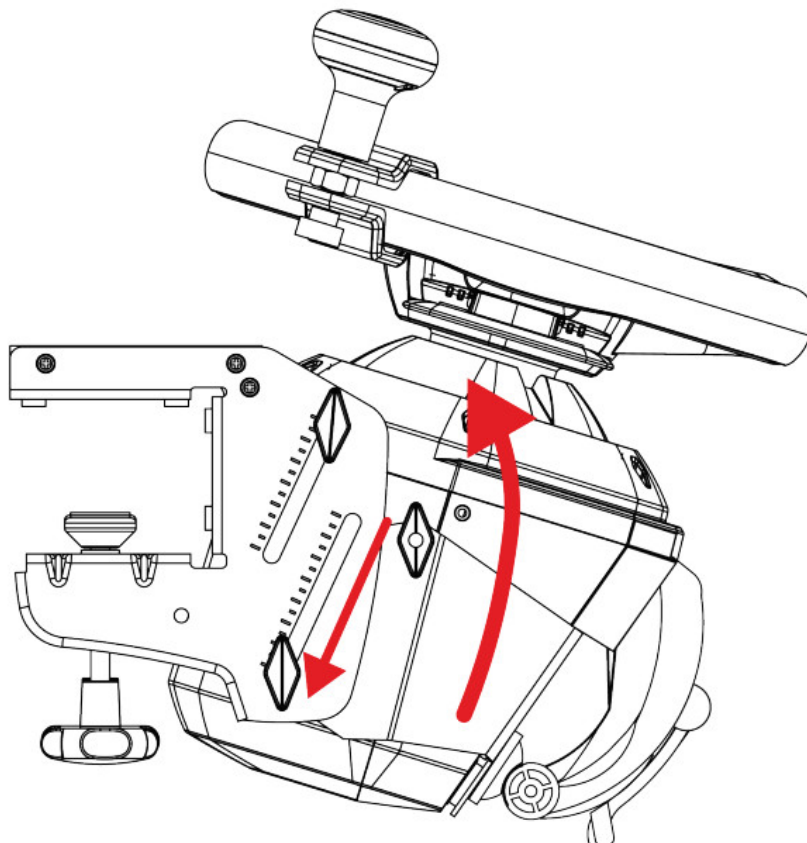
1. Place the T248 racing wheel on the SimTask Steering Kit shelf and tighten the side screws to hold the racing wheel in position.
2. Insert the two screws supplied in the clamping system, then tighten the device by turning the screws counterclockwise, so that they feed into the threaded holes located beneath the racing wheel, until the wheel is perfectly stable.

### Adjusting the inclination of the racing wheel

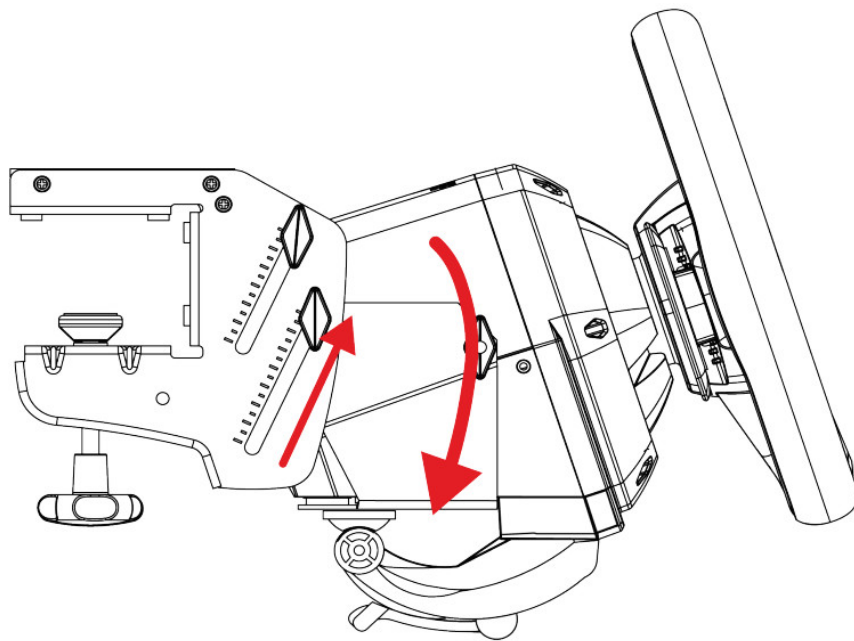
SimTask Steering Kit features sliding side rails that let you adjust precisely the inclination of the racing wheel to suit the type of vehicle you're driving.



1. Loosen the side screws and slide them up or down to adjust the inclination of the racing wheel.
2. Tighten the side screws when you are satisfied with the inclination.

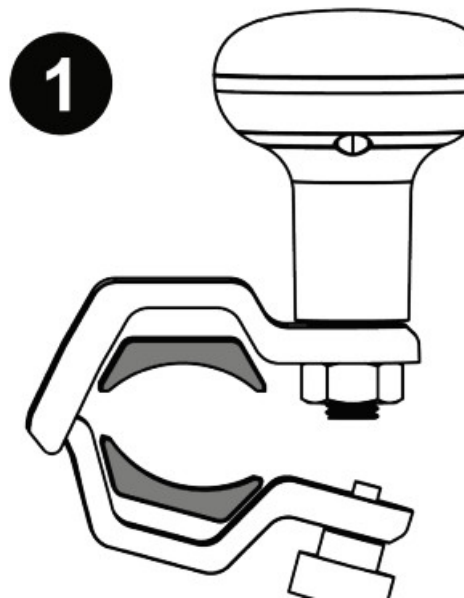


**Position for farm or construction machinery, truck, bus, with the spinner knob installed**



**Position for racing**

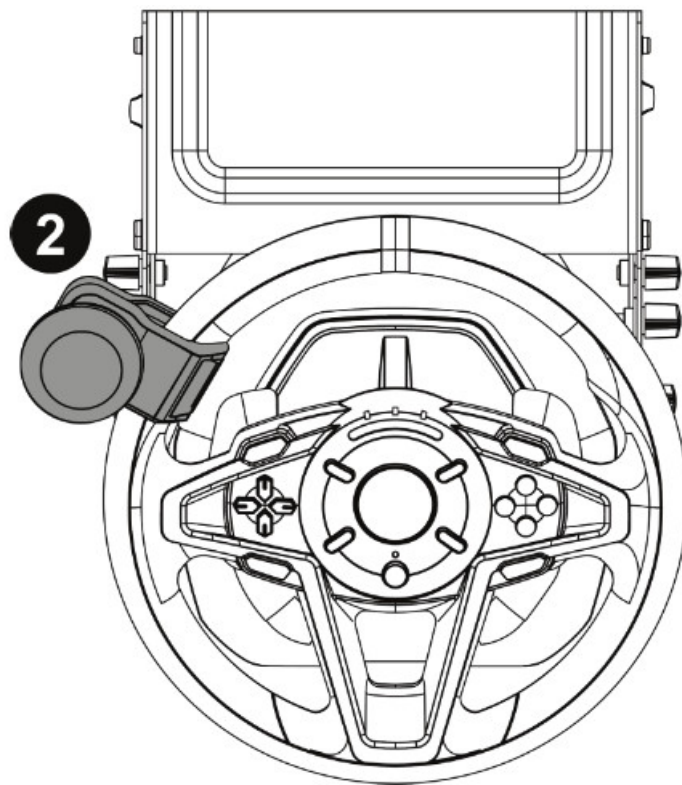
### Installing the spinner knob on the rim



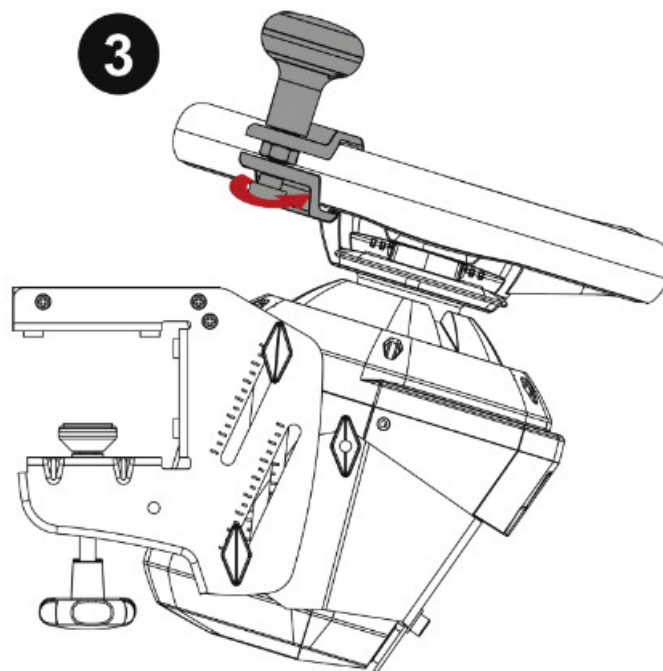
1. Insert a set of pads in the attachment system of the spinner knob.



Use the set of pads corresponding to your T248 racing wheel.



2. Place the attachment system of the spinner knob in the desired position on the rim.



3. Tighten the fastening system.

## FAQ and technical support

Do you have questions regarding SimTask Steering Kit, or are you experiencing technical problems? If so, visit the Thrustmaster technical support website: <https://support.thrustmaster.com/product/simtasksteering-kit/>





## Documents / Resources

<p>Europe, Middle East ENGLISH FRANÇAIS DEUTSCH NEDERLANDS ITALIANO ESPAÑOL PORTUGUÊS PCCZAR CESTINA TURKCE POLSKI SVEROKA SUOMI SLOVENČINA MAGYAR عربي</p> <p>North America/ Norteamérica ENGLISH FRANÇAIS ESPAÑOL Latin America/ América Latina ENGLISH ESPAÑOL PORTUGUÊS Asia Pacific 日本語 繁體中文 簡體中文 한국어 ENGLISH</p> <p><b>THRUSTMASTER</b> <b>SIMTASK</b> <b>STEERING KIT</b></p>	<p><a href="#">THRUSTMASTER T128 SimTask Steering Kit [pdf] User Manual</a> T128, T248, T128 SimTask Steering Kit, SimTask Steering Kit, Steering Kit, Kit</p>
--	--

## References

- [🌐 SimTask Farmstick - Thrustmaster - Technical support website](#)
- [📱 SimTask Farmstick - Thrustmaster - Technical support website](#)
- [📱 SimTask Steering Kit - Thrustmaster - Technical support website](#)
- [📱 T128 \(PS4/PS5/PC\) - Thrustmaster - Technical support website](#)
- [📱 T128 \(Xbox One/Xbox Series/PC\) - Thrustmaster - Technical support website](#)
- [📱 T128 \(Xbox One/Xbox Series/PC\) - Thrustmaster - Technical support website](#)