



THRUSTMAPPER eSwap X Pro Controller User Guide

[Home](#) » [THRUSTMAPPER](#) » THRUSTMAPPER eSwap X Pro Controller User Guide

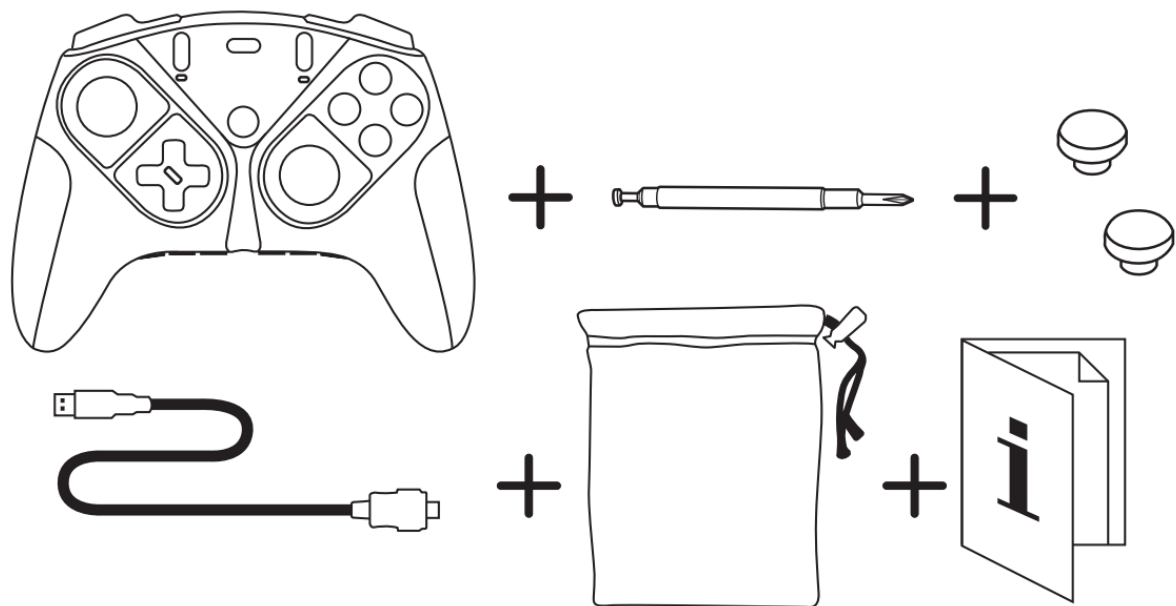
THRUSTMASTER® *eSwap X* **PRO CONTROLLER** Quick start guide



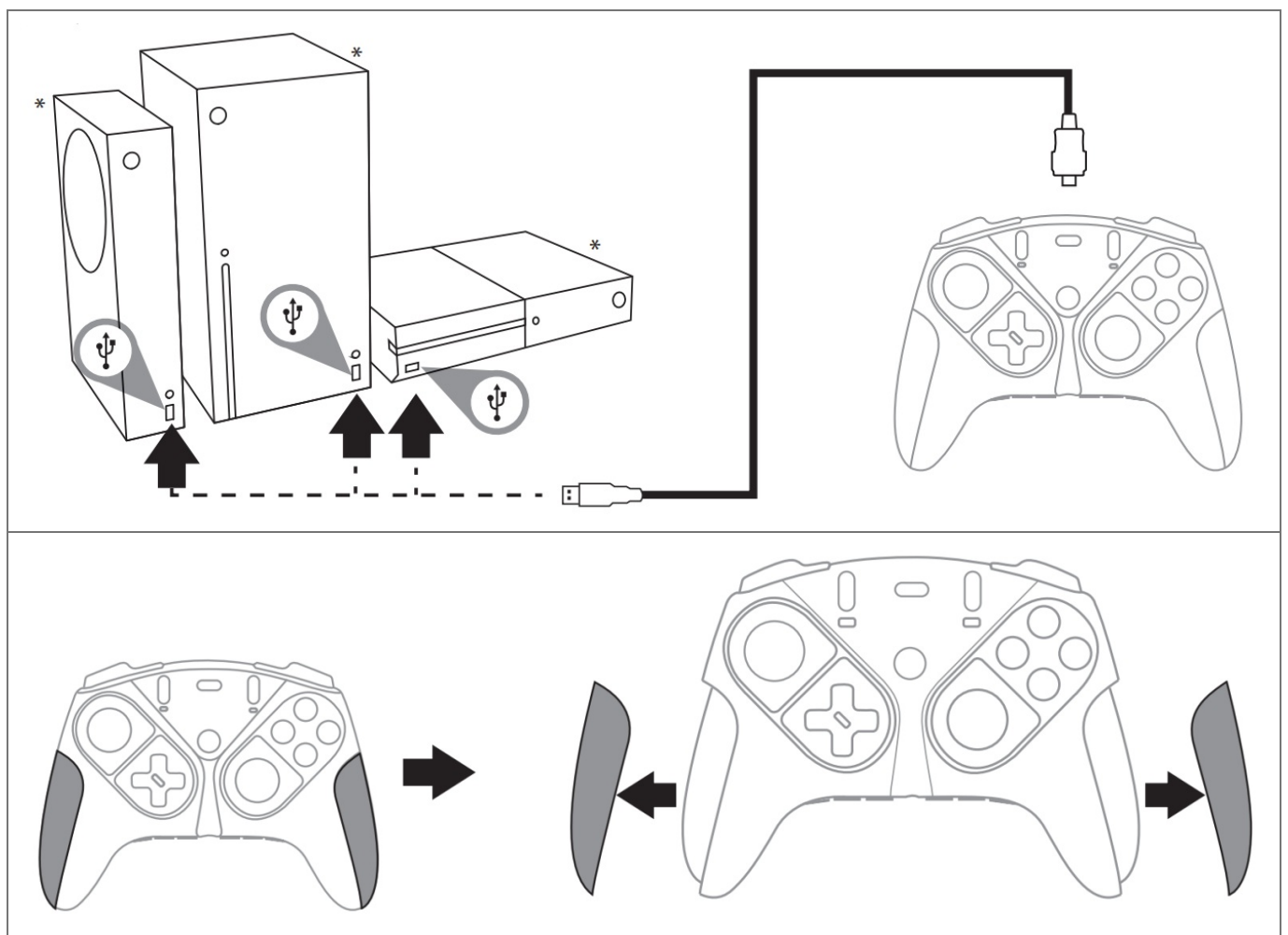
Contents [[hide](#)

- 1 [Box contents](#)
- 2 [Connection](#)
- 3 [Gamepad features](#)
- 4 [Swapping the grips](#)
- 5 [T-MOD technology](#)
- 6 [Swapping triggers RT](#)
- 7 [Swapping mini-stick caps](#)
- 8 [Selecting the mapping prole](#)
- 9 [Modifying the mapping of one of the two proles](#)
- 10 [Adjusting the trigger travel](#)
- 11 [Advanced mapping and customization](#)
- 12 [Updating your gamepad's firmware](#)
- 13 [Consumer warranty information](#)
- 14 [Documents / Resources](#)
 - 14.1 [References](#)
- 15 [Related Posts](#)

Box contents

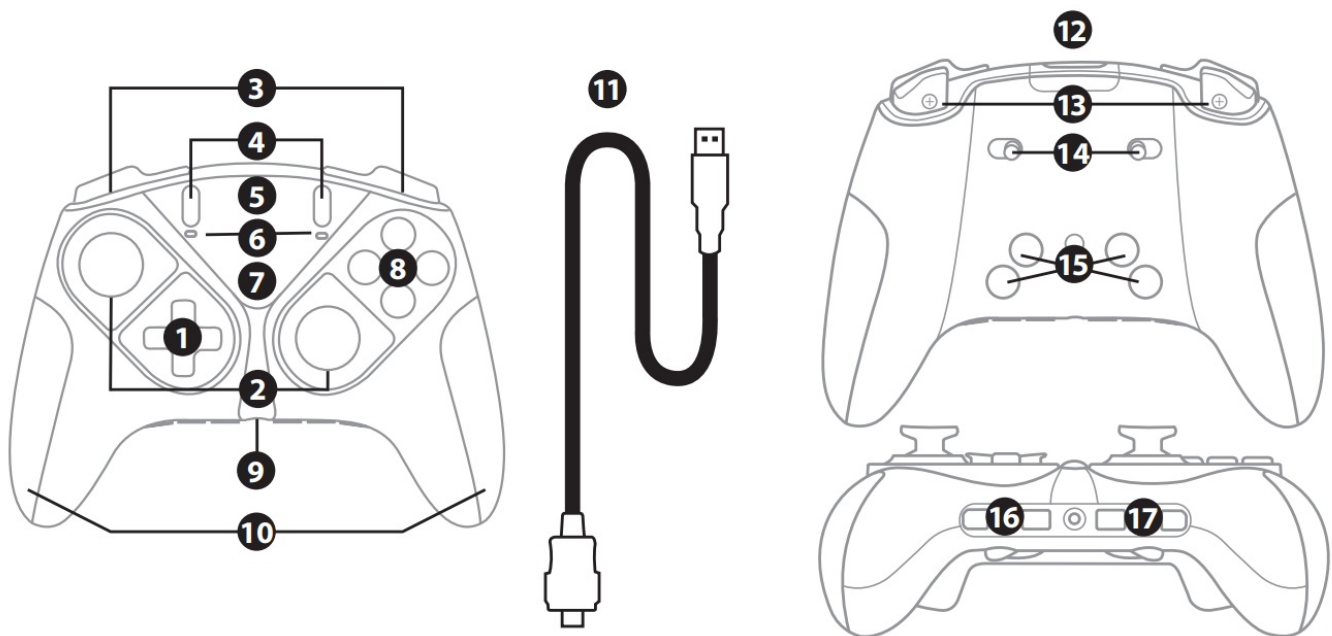


Connection



* Xbox Series X|S – Xbox One consoles not included

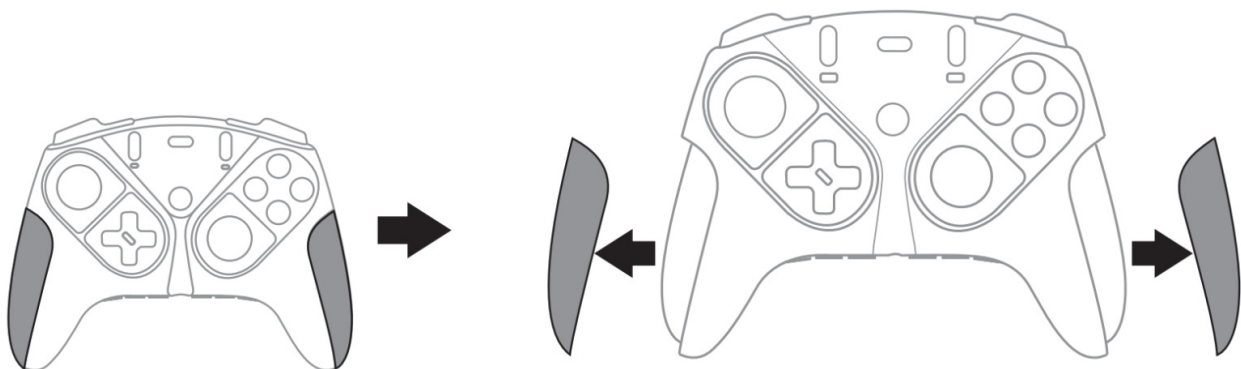
Gamepad features



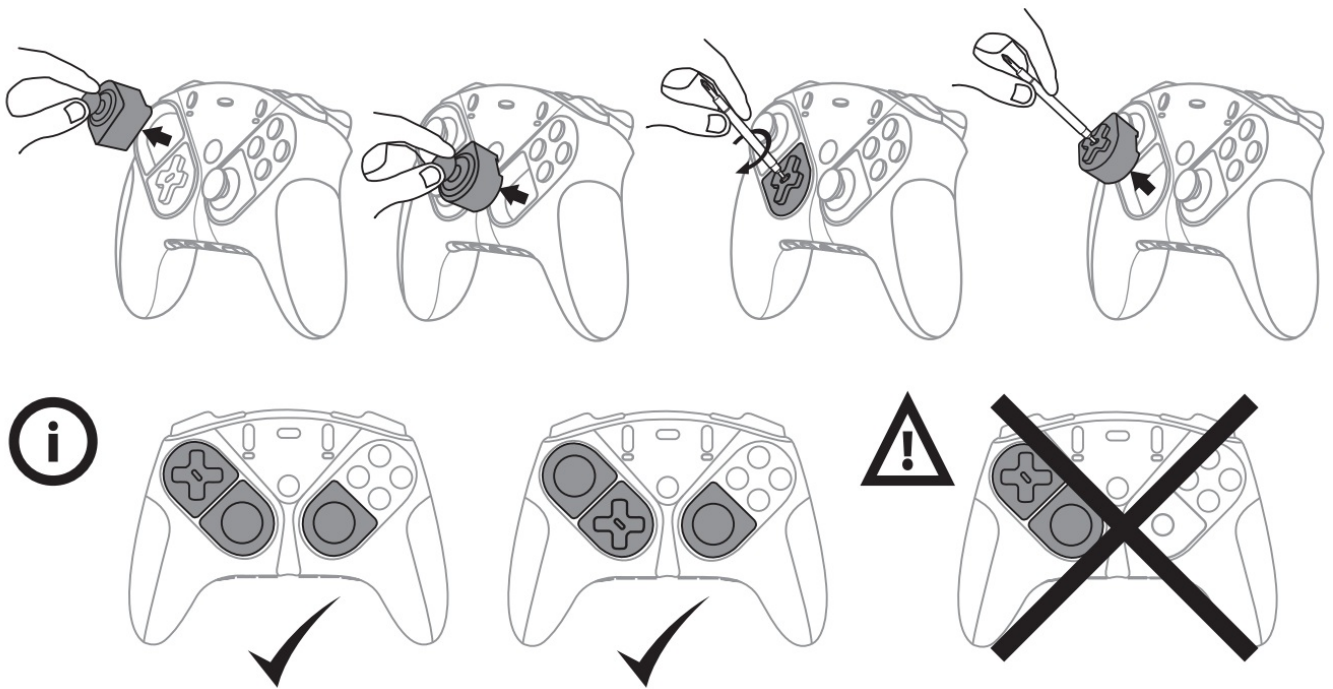
1. Swappable directional buttons module
2. Swappable stick modules
3. RB/LB buttons
4. VIEW/MENU buttons
5. SHARE button
6. Prole 1/Prole 2 leds
7. Xbox Guide button
8. Action buttons

9. 1/8" / 3.5 mm audio port
10. Swappable grips
11. Proprietary USB cable
12. Micro-USB port
13. Swappable progressive RT/LT triggers
14. RT/LT trigger locks
15. Buttons 1-2-3-4
16. Volume +/Volume -/Mic mute buttons
17. Prole 1/Mapping/Prole 2 buttons

Swapping the grips

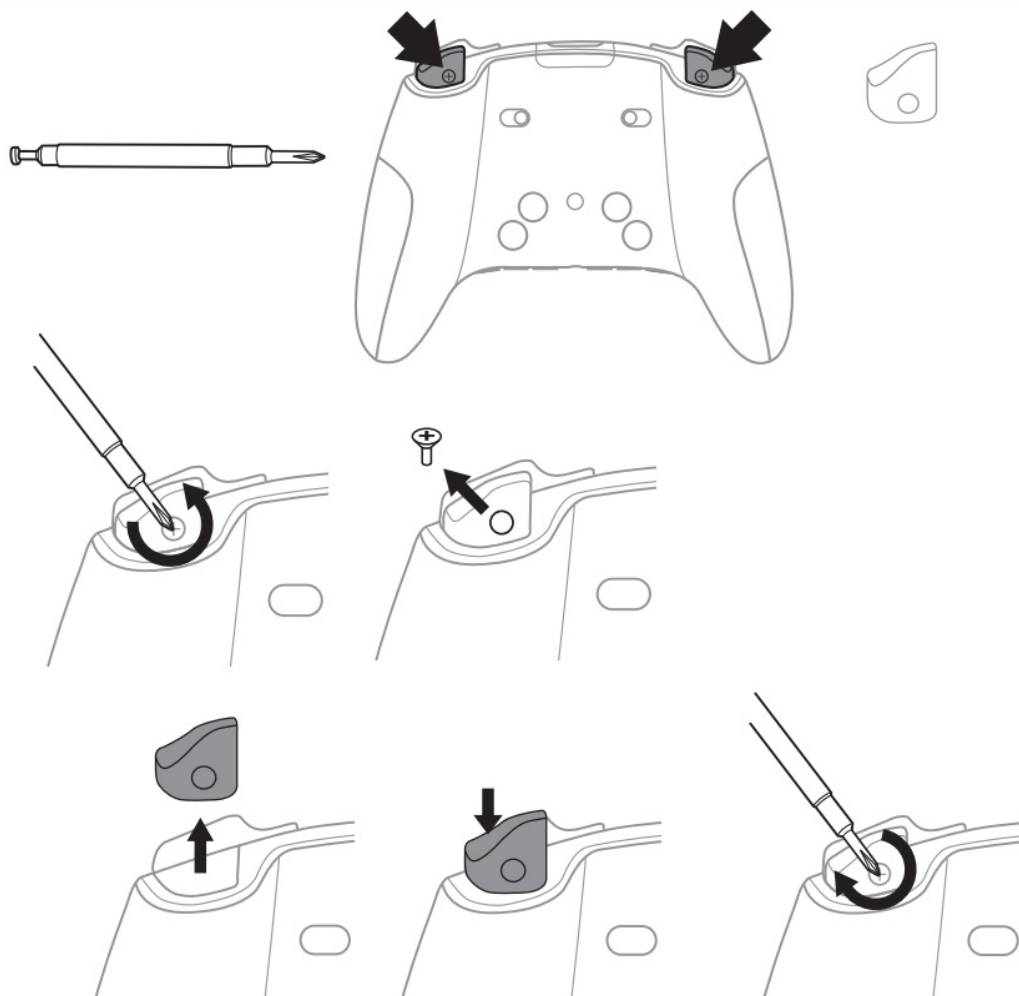


T-MOD technology

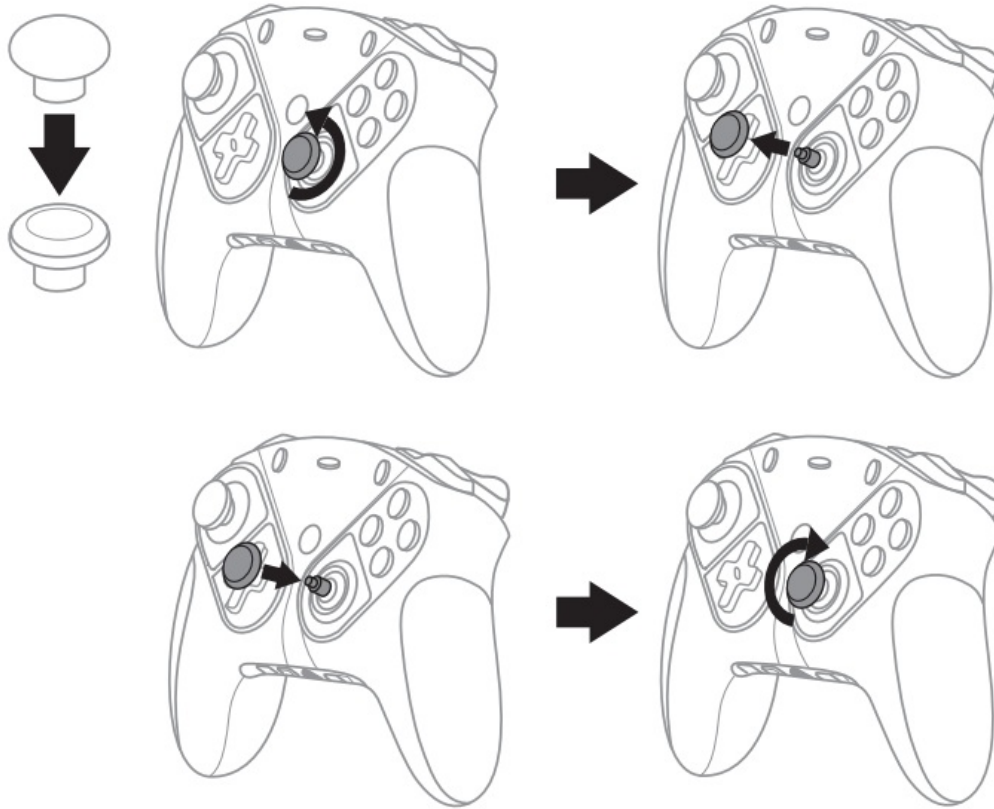


The above configurations have been approved and tested by Thrustmaster. All other module configurations are not tested nor endorsed by Thrustmaster. Make sure that all modules are connected before playing. Additional modules packs will be available soon, allowing for more possible configurations

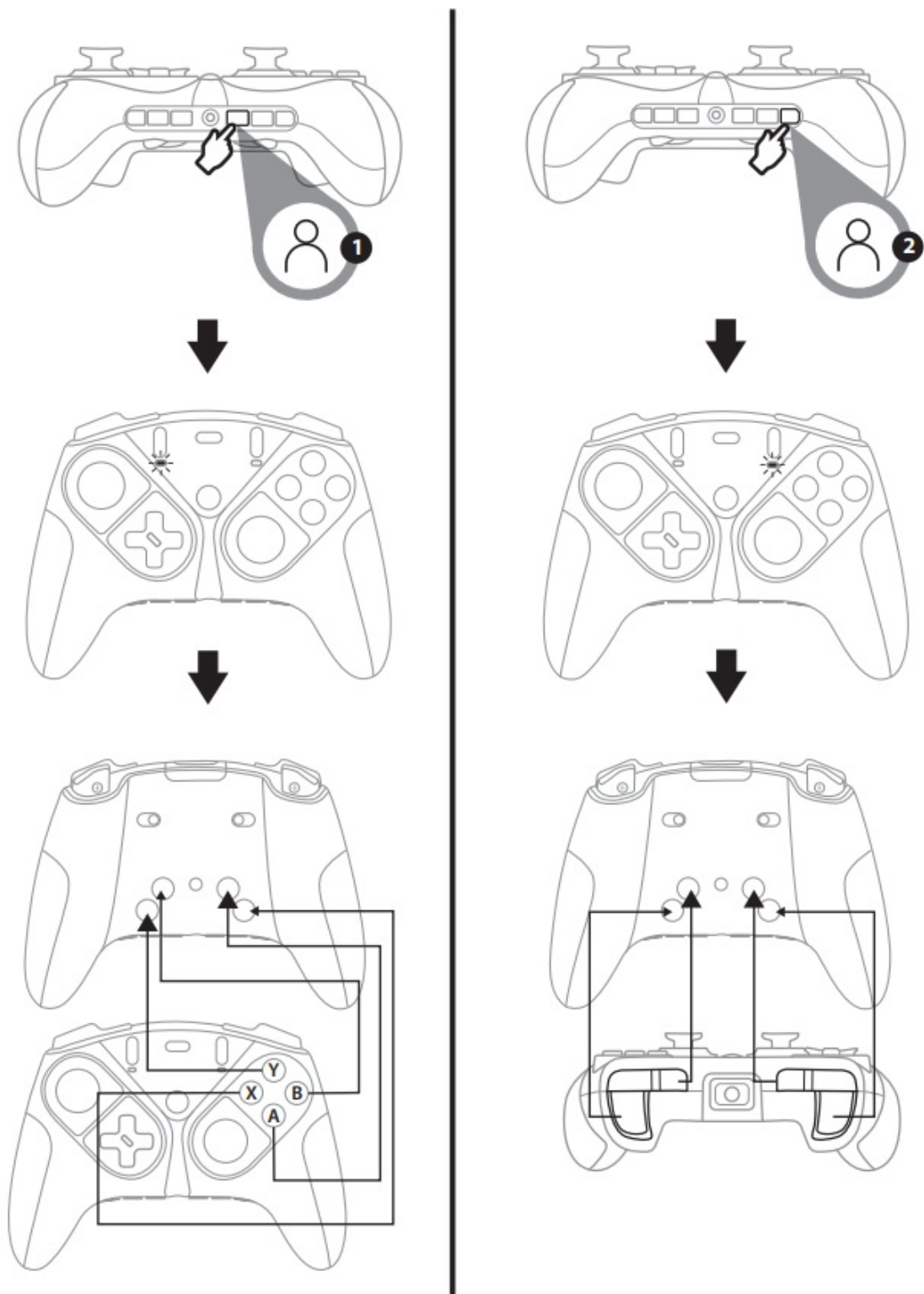
Swapping triggers RT



Swapping mini-stick caps

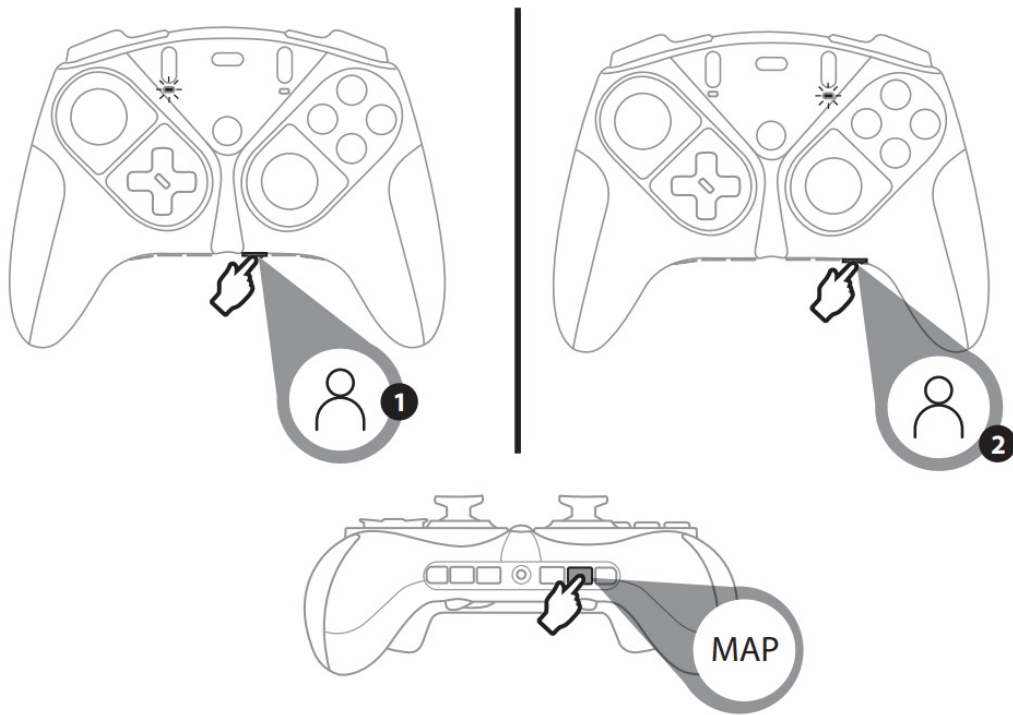


Selecting the mapping profile

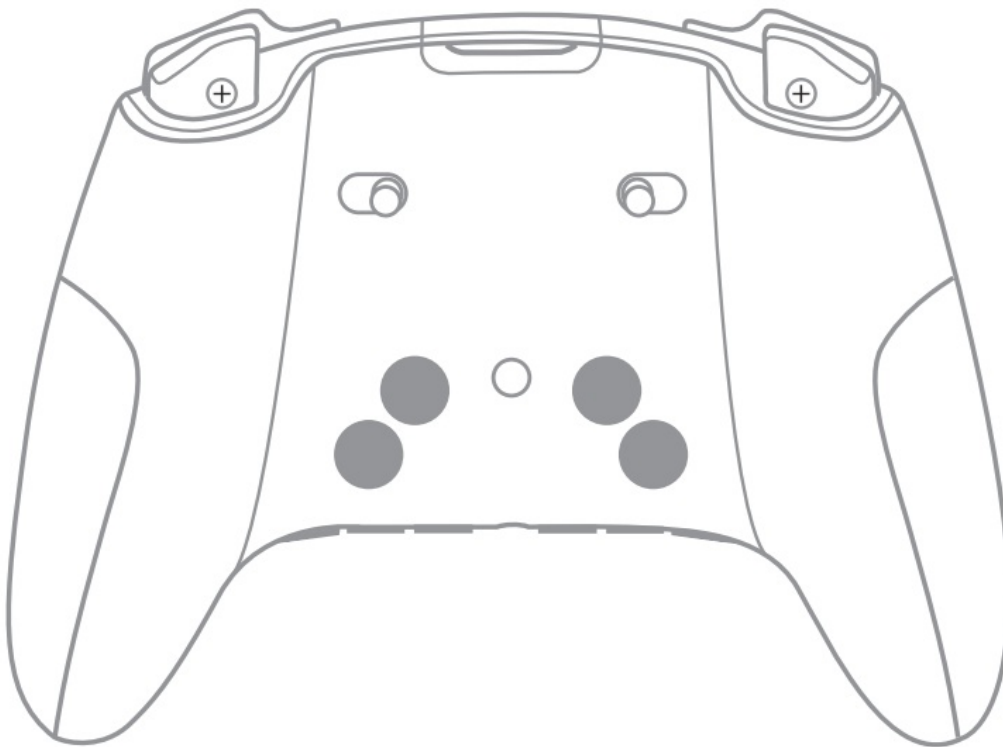


Modifying the mapping of one of the two proles

Step 1: Select the prole to modify, then press the MAP button. The prole LED flashes



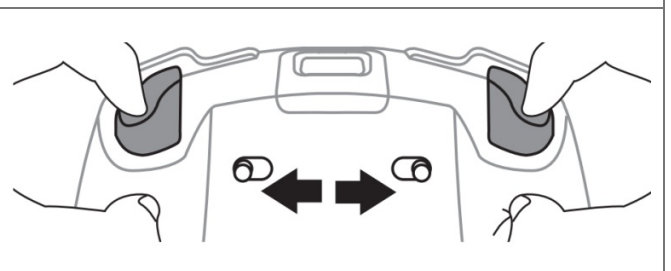
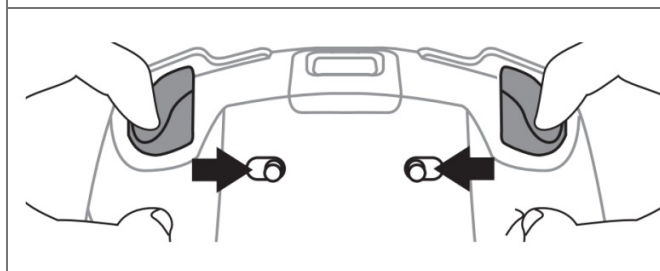
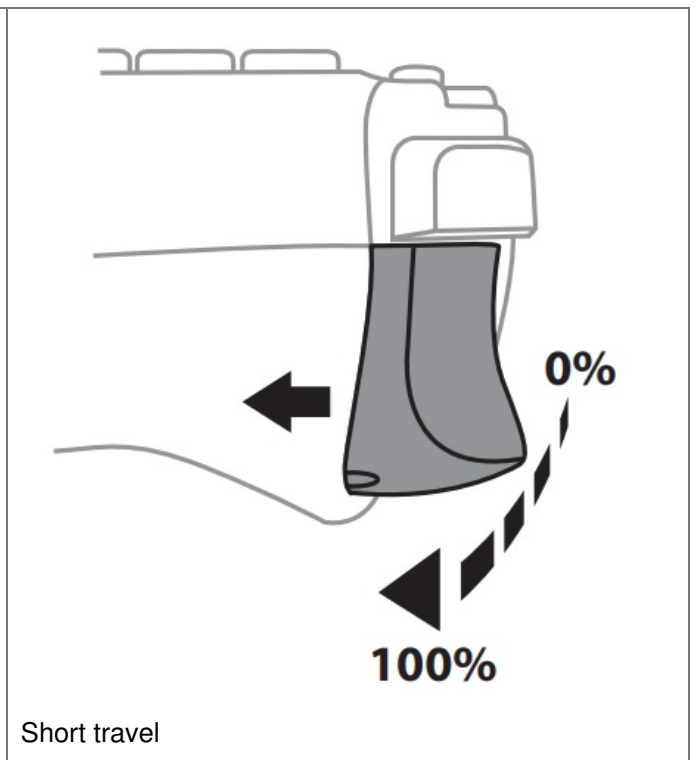
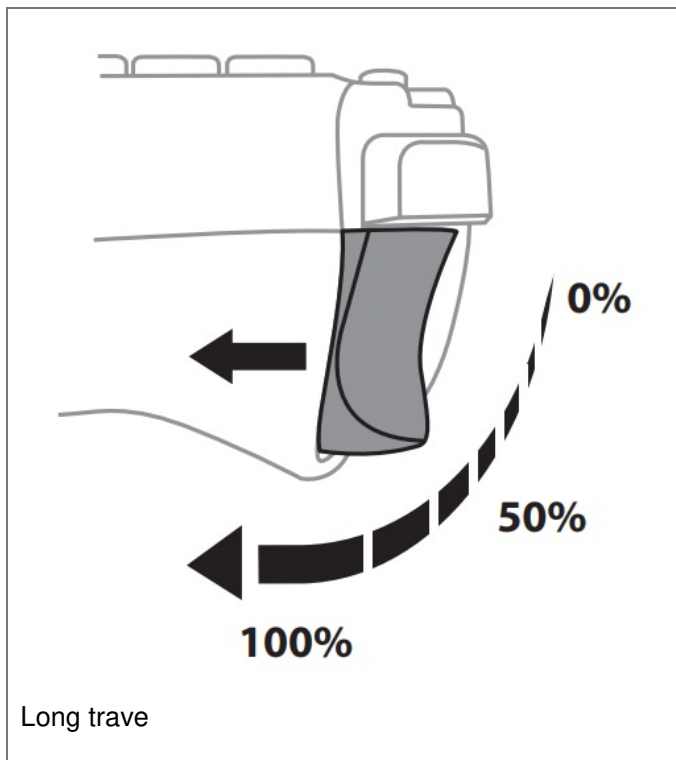
Step 2: Press and hold the button you want to modify (1, 2, 3 or 4).



Step 3: Press the button you want to assign. The gamepad vibrates to indicate that the change is applied. The prole LED stops

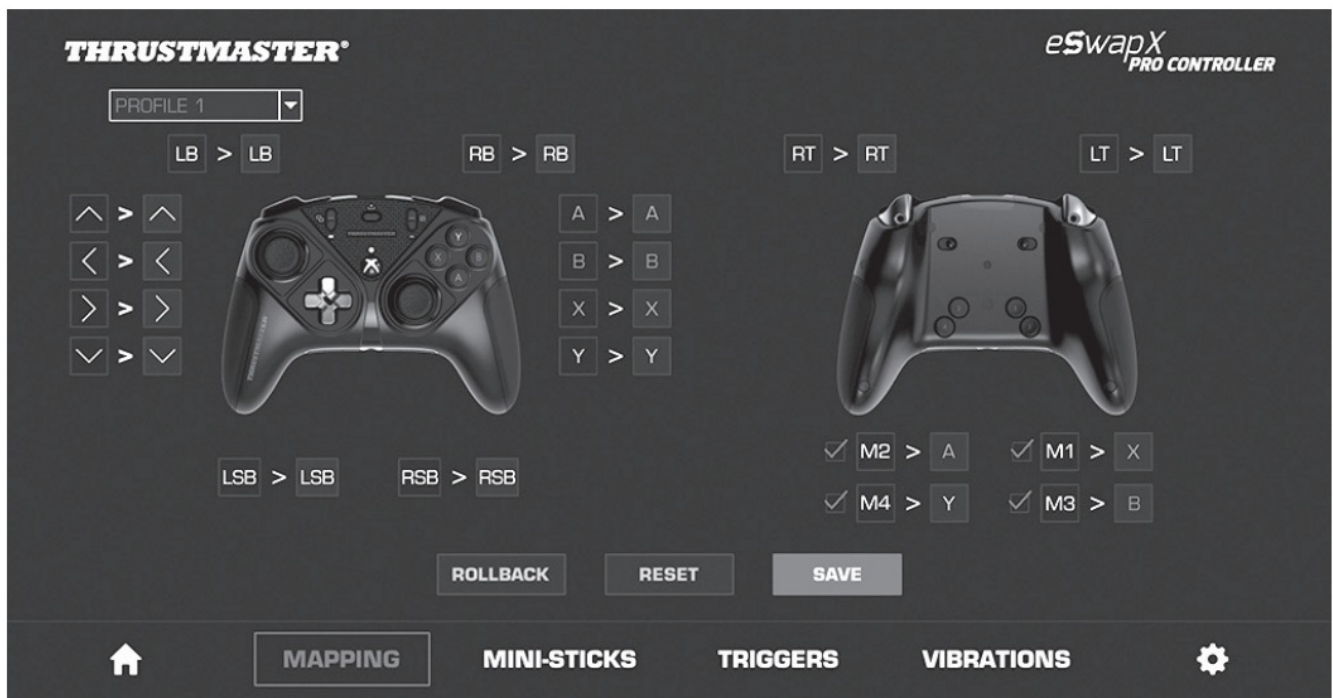


Adjusting the trigger travel



Advanced mapping and customization

Download and install the ThrustmapperX software for Xbox/Windows 10 on the Microsoft Store from your Xbox/PC



Design is subject to change. Design susceptible de varier

Updating your gamepad's firmware

The firmware included in your gamepad can be updated to a more recent version featuring product enhancements.

Consumer warranty information

Worldwide, Guillemot Corporation S.A., whose registered office is located at Place du Granier, B.P. 97143,35571 Chantepie, France (hereinafter "Guillemot") warrants to the consumer that this Thrustmaster product shall be free from defects in materials and workmanship, for a warranty period which corresponds to the time limit to bring an action for conformity with respect to this product. In the countries of the European Union, this corresponds to a period of two (2) years from the delivery of the Thrustmaster product. In other countries, the warranty period corresponds to the time limit to bring an action for conformity with respect to the Thrustmaster product according to applicable laws of the country in which the consumer was domiciled on the date of purchase of the Thrustmaster product (if no such action exists in the corresponding country, then the warranty the period shall be one (1) year from the original date of purchase of the Thrustmaster product).

Notwithstanding the above, rechargeable batteries are covered by a warranty period of six (6) months from the date of original purchase.

Should the product appear to be defective during the warranty period, immediately contact Technical Support, who will indicate the procedure to follow? If the defect is confirmed, the product must be returned to its place of purchase (or any other location indicated by Technical Support).

Within the context of this warranty, the consumer's defective product shall, at Technical Support's option, be either replaced or returned to working order. If during the warranty period, the Thrustmaster product is subject to such reconditioning, any period of at least seven (7) days during which the product is out of use shall be added to the remaining warranty period (this period runs from the date of the consumer's request for intervention or from the date on which the product in question is made available for reconditioning, if the date on which the product is made available for reconditioning is subsequent to the date of the request for intervention). If permitted under applicable law, the full liability of Guillemot and its subsidiaries (including for consequential damages) is limited to the return to working order or the replacement of the Thrustmaster product. If permitted under applicable law, Guillemot disclaims all warranties of merchantability or fitness for a particular purpose.

This warranty shall not apply: (1) if the product has been modified, opened, altered, or has suffered damage as a result of inappropriate or abusive use, negligence, an accident, normal wear, or any other cause unrelated to a material or manufacturing defect (including, but not limited to, combining the Thrustmaster product with any

unsuitable element, including in particular power supplies, rechargeable batteries, chargers, or any other elements not supplied by Guillemot for this product); (2) if the product has been used for any use other than home use, including for professional or commercial purposes (game rooms, training, competitions, for example); (3) in the event of failure to comply with the instructions provided by Technical Support; (4) to software, said software being subject to a specific warranty; (5) to consumables (elements to be replaced over the product's lifespan: disposable batteries, audio headset or headphone ear pads, for example); (6) to accessories (cables, cases, pouches, bags, wrist-straps, for example); (7) if the product was sold at public auction.

This warranty is nontransferable.

The consumer's legal rights with respect to laws applicable to the sale of consumer goods in his or her country are not affected by this warranty.

Additional warranty provisions

During the warranty period, Guillemot shall not provide, in principle, any spare parts, as Technical Support is the only party authorized to open and/or recondition any Thrustmaster product (with the exception of any reconditioning procedures which Technical Support may request that the consumer carry out, by way of written instructions – for example, due to the simplicity and the lack of confidentiality of the reconditioning process – and by providing the consumer with the required spare part(s), where applicable). Given its innovation cycles and in order to protect its know-how and trade secrets, Guillemot shall not provide, in principle, any reconditioning notification or spare parts for any Thrustmaster product whose warranty period has expired.

In the United States of America and in Canada, this warranty is limited to the product's internal mechanism and external housing. In no event shall Guillemot or its affiliates be held liable to any third party for any consequential or incidental damages resulting from the breach of any express or implied warranties. Some States/Provinces do not allow limitations on how long an implied warranty lasts or exclusion or limitation of liability for consequential or incidental damages, so the above limitations or exclusions may not apply to you. This warranty gives you specific legal rights, and you may also have other rights which vary from State to State or Province to Province.

Liability

If permitted under applicable law, Guillemot Corporation S.A. (hereinafter "Guillemot") and its subsidiaries disclaim all liability for any damages caused by one or more of the following: (1) the product has been modified, opened or altered; (2) failure to comply with assembly instructions; (3) inappropriate or abusive use, negligence, an accident (an impact, for example); (4) normal wear; (5) the use of the product for any use other than home use, including for professional or commercial purposes (game rooms, training, competitions, for example). If permitted under applicable law, Guillemot and its subsidiaries disclaim all liability for any damages unrelated to a material or manufacturing defect with respect to the product (including, but not limited to, any damages caused directly or indirectly by any software, or by combining the Thrustmaster product with any unsuitable element, including in particular power supplies, rechargeable batteries, chargers, or any other elements not supplied by Guillemot for this product).

ENVIRONMENTAL PROTECTION RECOMMENDATION



At the end of its working life, this product should not be disposed of with standard household waste, but rather dropped off at a collection point for the disposal of Waste Electrical and Electronic Equipment (WEEE) for recycling. This is confirmed by the symbol found on the product, user manual or packaging.

Depending on their characteristics, the materials may be recycled. Through recycling and other forms of processing Waste Electrical and Electronic

Equipment, you can make a significant contribution towards helping to protect the environment.

Please contact your local authorities for information on the collection point nearest you.

United States and Canada:

FCC STATEMENT

1. This device complies with Part 15 of the FCC Rules. Operation is subject to the following two conditions:
 - (1) This device may not cause harmful interference, and
 - (2) This device must accept any interference received, including interference that may cause undesired operation.
2. Changes or modifications not expressly approved by the party responsible for compliance could void the user's authority to operate the equipment

NOTE: This equipment has been tested and found to comply with the limits for a Class B digital device, pursuant to Part 15 of the FCC Rules. These limits are designed to provide reasonable protection against harmful interference in a residential installation. This equipment generates, uses, and can radiate radio frequency energy and, if not installed and used in accordance with the instructions, may cause harmful interference to radio communications. However, there is no guarantee that interference will not occur in a particular installation. If this equipment does cause harmful interference to radio or television reception, which can be determined by turning the equipment off and on, the user is encouraged to try to correct the interference by one or more of the following measures:

- Reorient or relocate the receiving antenna.
- Increase the separation between the equipment and receiver.
- Connect the equipment into an outlet on a circuit different from that to which the receiver is connected.
- Consult the dealer or an experienced radio/TV technician for help.

© 2021 Guillemot Corporation S.A. All rights reserved. Thrustmaster® is a registered trademark of Guillemot Corporation S.A. Microsoft, Xbox, Xbox “Sphere” Design, Xbox Series X|S, Xbox One and Windows are trademarks of the Microsoft group of companies. All other trademarks are the property of their respective owners. TouchSense® Technology Licensed from Immersion Software Ireland Limited.

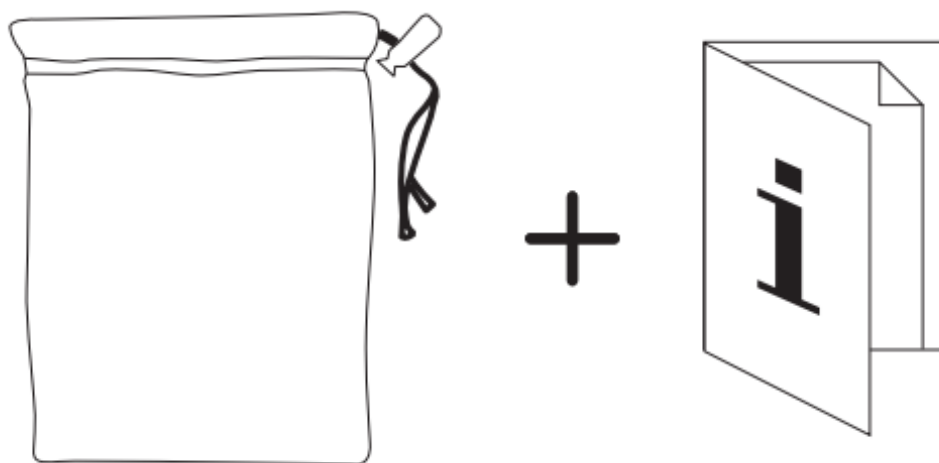
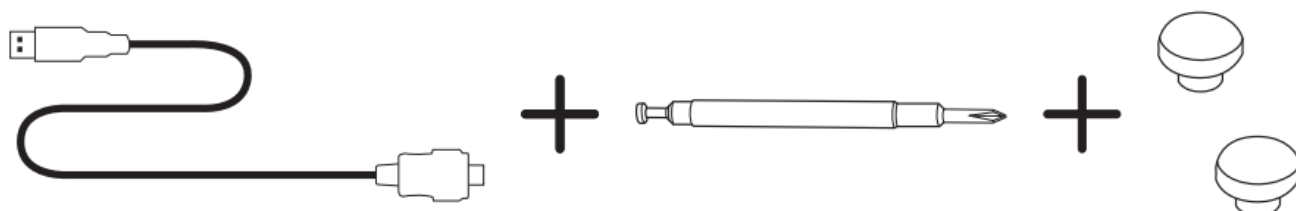
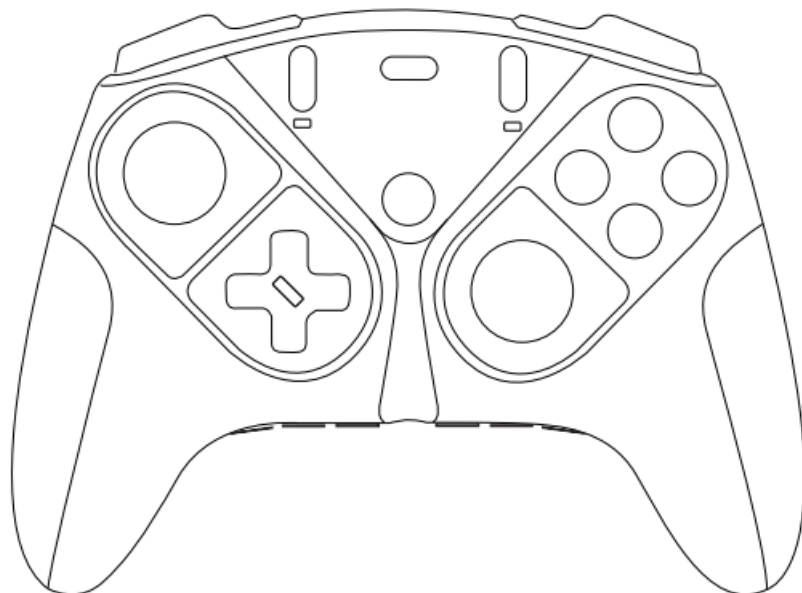
Protected by one or more of the U.S. Patents found at the following address www.immersion.com/patent-marking.html and other patents pending.

All other trademarks and brand names are hereby acknowledged and are the property of their respective owners. Illustrations not binding. Contents, designs, and specifications are subject to change without notice and may vary from one country to another. Made in China.

Manufactured and distributed by Guillemot Corporation S.A.

THRUSTMASTER®

eSwap X **PRO CONTROLLER**



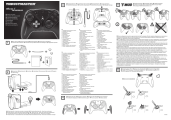
TECHNICAL SUPPORT
<https://support.thrustmaster.com>





www.thrustmaster.com

Documents / Resources



[THRUSTMAPPER eSwap X Pro Controller](#) [pdf] User Guide

THRUSTMAPPER, eSwap, X Pro, Controller

References

- [🌐 Thrustmaster - Technical support website](#)
- [📄 Legal - Immersion - Haptic Technology](#)
- [🎮 Thrustmaster | Wheels, Joysticks and Gamepads for video games](#)
- [📄 Thrustmaster - Technical support website](#)