

**THORN**  
**CETUS3**  
**Kaiser**  
**Casting**  
**Surround**



# THORN CETUS3 Kaiser Casting Surround Instruction Manual

[Home](#) » [THORN](#) » THORN CETUS3 Kaiser Casting Surround Instruction Manual 

## Contents

- [1 THORN CETUS3 Kaiser Casting Surround](#)
- [2 Product Information](#)
- [3 Product Usage Instructions](#)
- [4 FAQ](#)
- [5 WHAT'S IN THE BOX](#)
- [6 SPECIFICATION](#)
- [7 Installation and commissioning](#)
- [8 Documents / Resources](#)
  - [8.1 References](#)
- [9 Related Posts](#)

**THORN**

## THORN CETUS3 Kaiser Casting Surround



## Product Information

### Specifications

- **Product Name:** Kaiser Casting Surround #CETUS3
- **Model:** CETUS3 06980370
- **Mat.-Nr:** 06 980 388/4/01 12.23

### Product Usage Instructions

#### Installation

Installation and commissioning must be carried out by authorized specialists only. Follow the provided installation instructions carefully to ensure proper setup.

#### Usage

Once installed by authorized personnel, the Kaiser Casting Surround #CETUS3 can be used according to its intended purpose.

Make sure to follow any additional usage guidelines provided in the manual.

### FAQ

**Q: Can I install the product myself?**

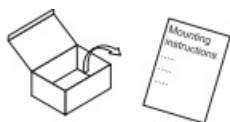
**A:** No, installation and commissioning must only be done by authorized specialists.

**Q: Where can I find more information about the product?**

**A:** Visit the official website at [Kaiser Elektro](https://www.kaiser-elektro.de/en_DE/) for detailed product information and support.

[https://www.kaiser-elektro.de/en\\_DE/](https://www.kaiser-elektro.de/en_DE/)

### WHAT'S IN THE BOX



HaloX



## SPECIFICATION

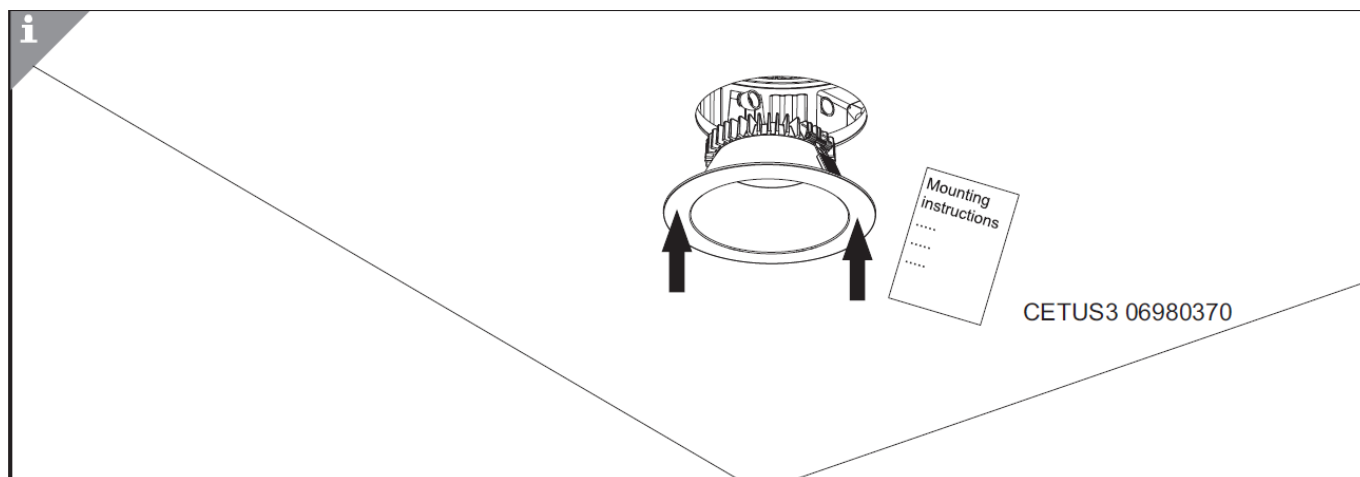
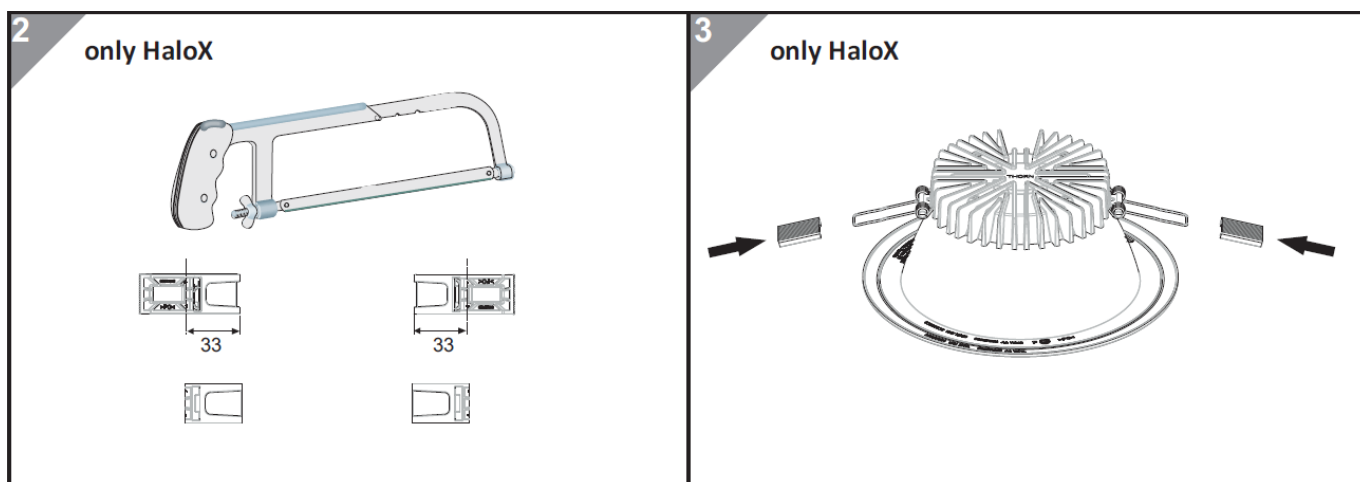
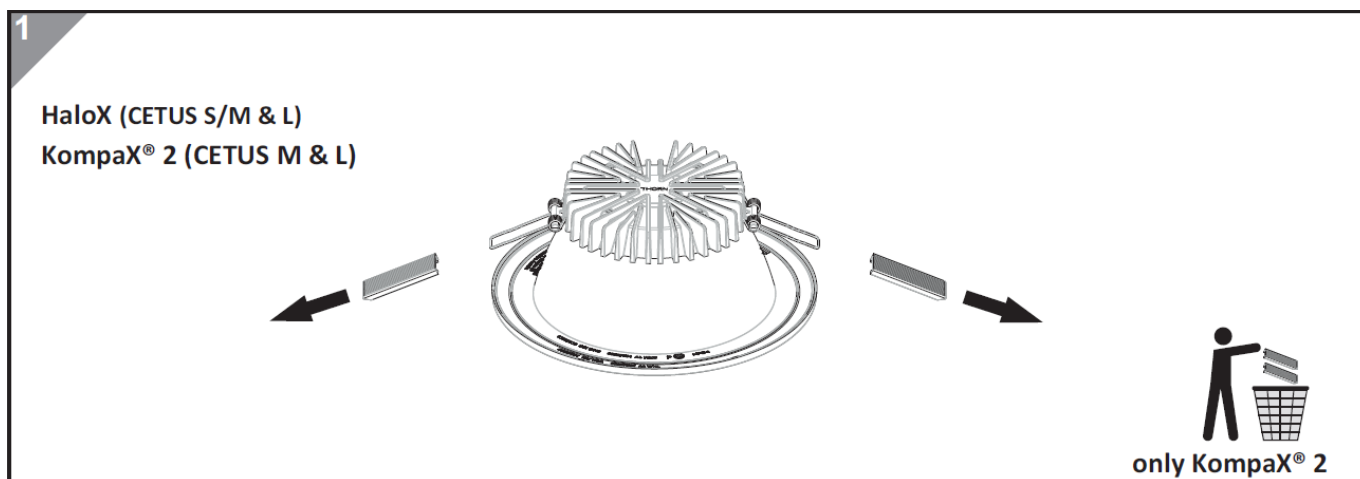
Luminaire	Concrete housing system KAISER
<b>CETUS3</b>	<b>HaloX®</b>
S all	HF, EHF, HFIX, COR, E3
M+L 1000/2000	E3
M+L 3000/LCS	
M+L all	HF, EHF, HFIX, COR

<b>Luminaire</b>	<b>CETUS3 S all HF, EHF, HFIX, COR, E3</b>
<b>KAISER system and components</b>	<b>HaloX® 180</b> HaloX® 180 with tunnel 325 for on-site mixed concrete, Order number: 1282-40 HaloX® 180 front parts - Ceiling exit (CE) Ø 100 mm, Order number: 1282-01
<b>Luminaire</b>	<b>CETUS3 M all HF, EHF, HFIX, COR and 1000/2000 E3</b>
<b>KAISER system and components</b>	<b>HaloX® 250</b> HaloX® 250 with tunnel 325 for on-site mixed concrete, Order number: 1283-40 HaloX® 250 front parts - Ceiling exit (CE) Ø 180 mm, Order number: 1283-01
<b>Luminaire</b>	<b>CETUS3 L all HF, EHF, HFIX, COR and 1000/2000 E3</b>
<b>KAISER system and components</b>	<b>HaloX® 250</b> HaloX® 250 with tunnel 325 for on-site mixed concrete, Order number: 1283-40 HaloX® 250 front parts - Ceiling exit (CE) Ø 200 mm, Order number: 1283-03

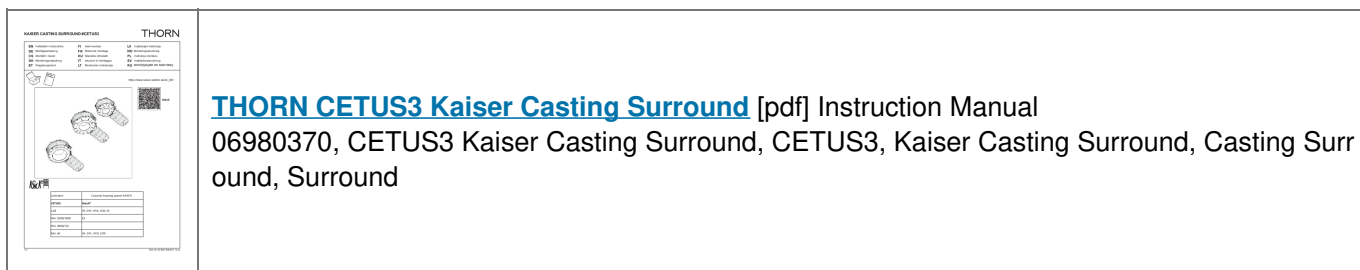
<b>Leuchte</b>	<b>CETUS3 S alle HF, EHF, HFIX, COR, E3</b>
<b>KAISER System und Komponenten</b>	<b>HaloX® 180</b> HaloX® 180 mit Tunnel 325 für Ortbeton, Artikel-Nummer: 1282-40 HaloX® 180 Frontteil Einbaudurchmesser 100 mm, Artikel-Nr.: 1282-01

<b>Leuchte</b>	<b>CETUS3 M alle HF, EHF, HFIX, COR und 1000/2000 E3</b>
<b>KAISER System und Komponenten</b>	<b>HaloX® 250</b> HaloX® 250 mit Tunnel 325 für Ortbeton, Artikel-Nr.: 1283-40 HaloX® 250 Frontteil Einbaudurchmesser 180 mm, Artikel-Nr.: 1283-01
<b>Leuchte</b>	<b>CETUS3 L alle HF, EHF, HFIX, COR und 1000/2000 E3</b>
<b>KAISER System und Komponenten</b>	<b>HaloX® 250</b> HaloX® 250 mit Tunnel 325 für Ortbeton, Artikel-Nr.: 1283-40 HaloX® 250 Frontteil Einbaudurchmesser 200 mm, Artikel-Nr.: 1283-03


Installation and commissioning may only be carried out by authorized specialists.



## Documents / Resources



## References

-  [KAISER Elektro](#)
- [User Manual](#)

[Manuals+](#), [Privacy Policy](#)

This website is an independent publication and is neither affiliated with nor endorsed by any of the trademark owners. The "Bluetooth®" word mark and logos are registered trademarks owned by Bluetooth SIG, Inc. The "Wi-Fi®" word mark and logos are registered trademarks owned by the Wi-Fi Alliance. Any use of these marks on this website does not imply any affiliation with or endorsement.