




THORN 96635243 S Insert UGR Instruction Manual

[Home](#) » [THORN](#) » THORN 96635243 S Insert UGR Instruction Manual 

Contents

- [1 THORN 96635243 S Insert UGR](#)
- [2 Product Information](#)
- [3 Product Usage Instructions](#)
- [4 Frequently Asked Questions \(FAQ\)](#)
- [5 WHAT IS IN BOX](#)
- [6 Installation instructions](#)
- [7 Documents / Resources](#)
 - [7.1 References](#)

THORN

THORN 96635243 S Insert UGR



Product Information

The CETUS3 ACCESSORY is a lighting fixture accessory that is designed to enhance the functionality and

performance of the CETUS3 lighting fixture. It is available in three different sizes: S, M, and L. The accessory is designed for easy installation and can be used with the CETUS3 lighting fixture to provide additional features such as UGR inserts and IP54 covers.

Specifications

- Available Sizes: S, M, L
- UGR Inserts: CETUS3 S UGR INSERT, CETUS3 M UGR INSERT, CETUS3 L UGR INSERT
- UGR Inserts (EM): CETUS3 S UGR INSERT EM, CETUS3 M UGR INSERT EM, CETUS3 L UGR INSERT EM
- IP54 Covers: CETUS3 S IP54 COVER, CETUS3 M IP54 COVER, CETUS3 L IP54 COVER

Product Usage Instructions

Installation

The installation and commissioning of the CETUS3 ACCESSORY should only be carried out by authorized specialists. Follow these steps for installation:

1. Prepare the CETUS3 lighting fixture for installation.
2. Choose the appropriate size of the CETUS3 ACCESSORY (S, M, or L) based on your requirements.
3. Insert the UGR insert or IP54 cover into the CETUS3 lighting fixture.
4. Ensure that the accessory is securely attached to the lighting fixture.

Demontage

The demontage process may be required for maintenance or replacement purposes. Follow these steps for demontage:

1. Turn off the power supply to the CETUS3 lighting fixture.
2. Remove the UGR insert or IP54 cover from the lighting fixture.
3. Carefully detach the CETUS3 ACCESSORY from the lighting fixture.

Frequently Asked Questions (FAQ)

Q: Who should carry out the installation of the CETUS3 ACCESSORY?

A: The installation and commissioning should only be carried out by authorized specialists.

Q: Can I use the CETUS3 ACCESSORY with any size of the CETUS3 lighting fixture?

A: Yes, the CETUS3 ACCESSORY is available in three different sizes (S, M, and L) to match the size of the CETUS3 lighting fixture.

Q: How do I remove the CETUS3 ACCESSORY from the lighting fixture?

A: To remove the CETUS3 ACCESSORY, first turn off the power supply to the lighting fixture. Then, carefully detach the accessory from the fixture.

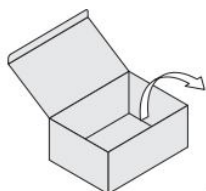
Q: Are UGR inserts and IP54 covers included with the CETUS3 ACCESSORY?

A: Yes, UGR inserts and IP54 covers are included with the CETUS3 ACCESSORY. The specific inserts and covers depend on the size of the accessory (S, M, or L).

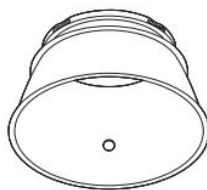
Q: Where can I find more information about the CETUS3 ACCESSORY?

A: For more information about the CETUS3 ACCESSORY, please visit our website at www.thornlighting.com.

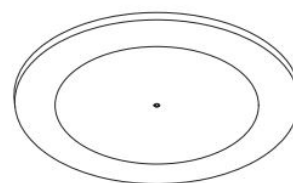
WHAT IS IN BOX



96635243 CETUS3 S UGR INSERT
96635244 CETUS3 M UGR INSERT
96635245 CETUS3 L UGR INSERT



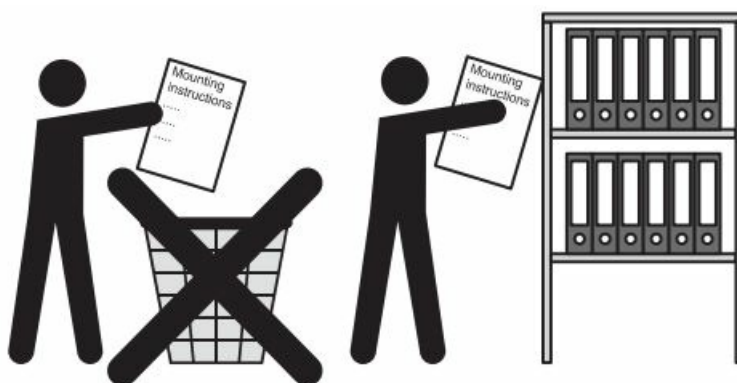
96635246 CETUS3 S UGR INSERT EM
96635247 CETUS3 M UGR INSERT EM
96635248 CETUS3 L UGR INSERT EM



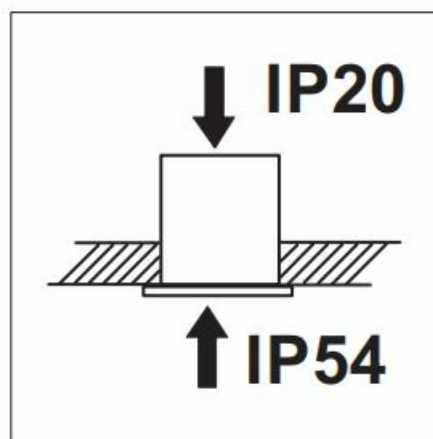
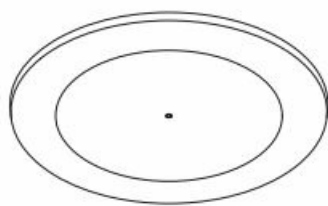
96635249 CETUS3 S IP54 COVER
96635250 CETUS3 M IP54 COVER
96635251 CETUS3 L IP54 COVER



Installation and commissioning may only be carried out by authorized specialists.

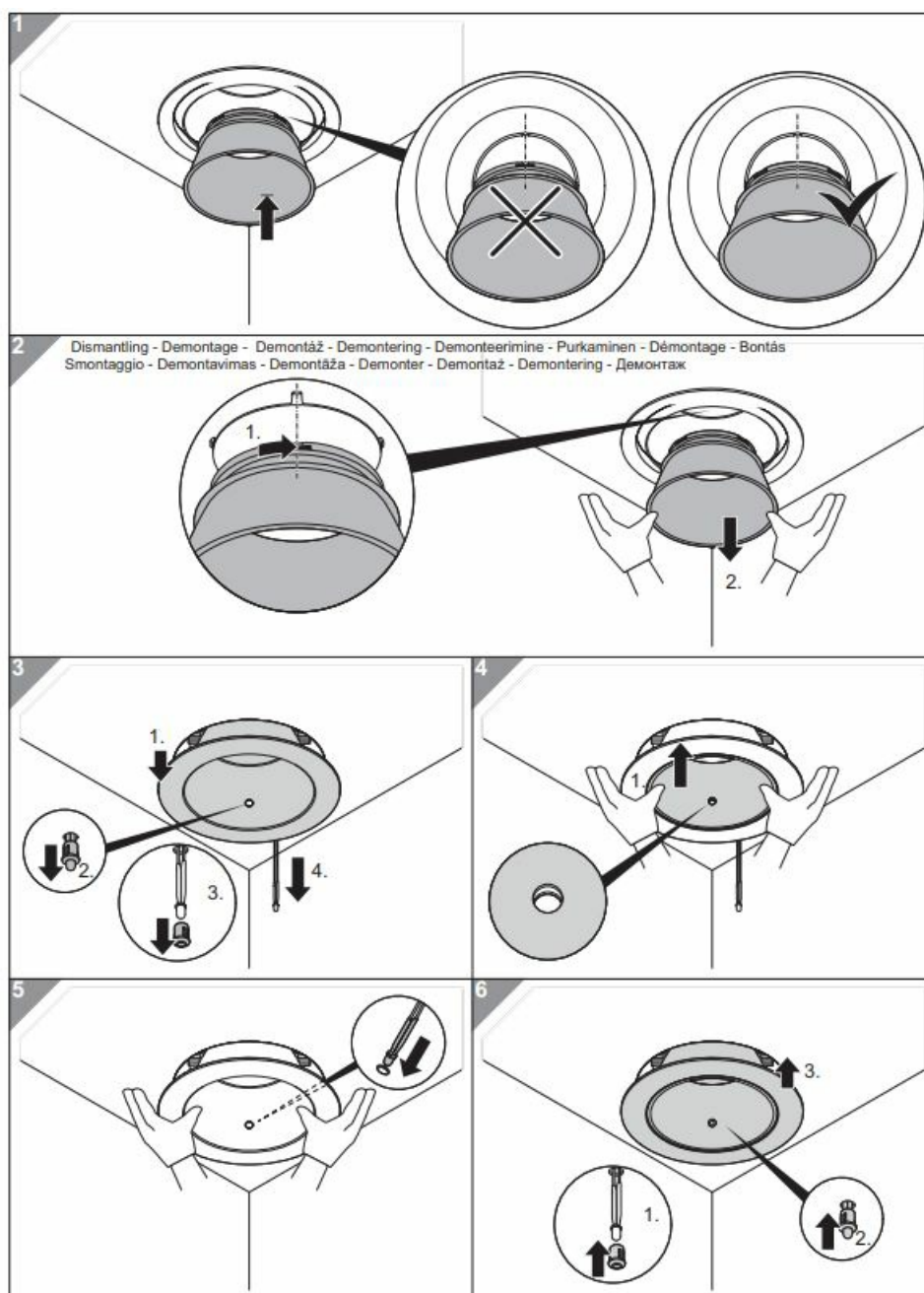


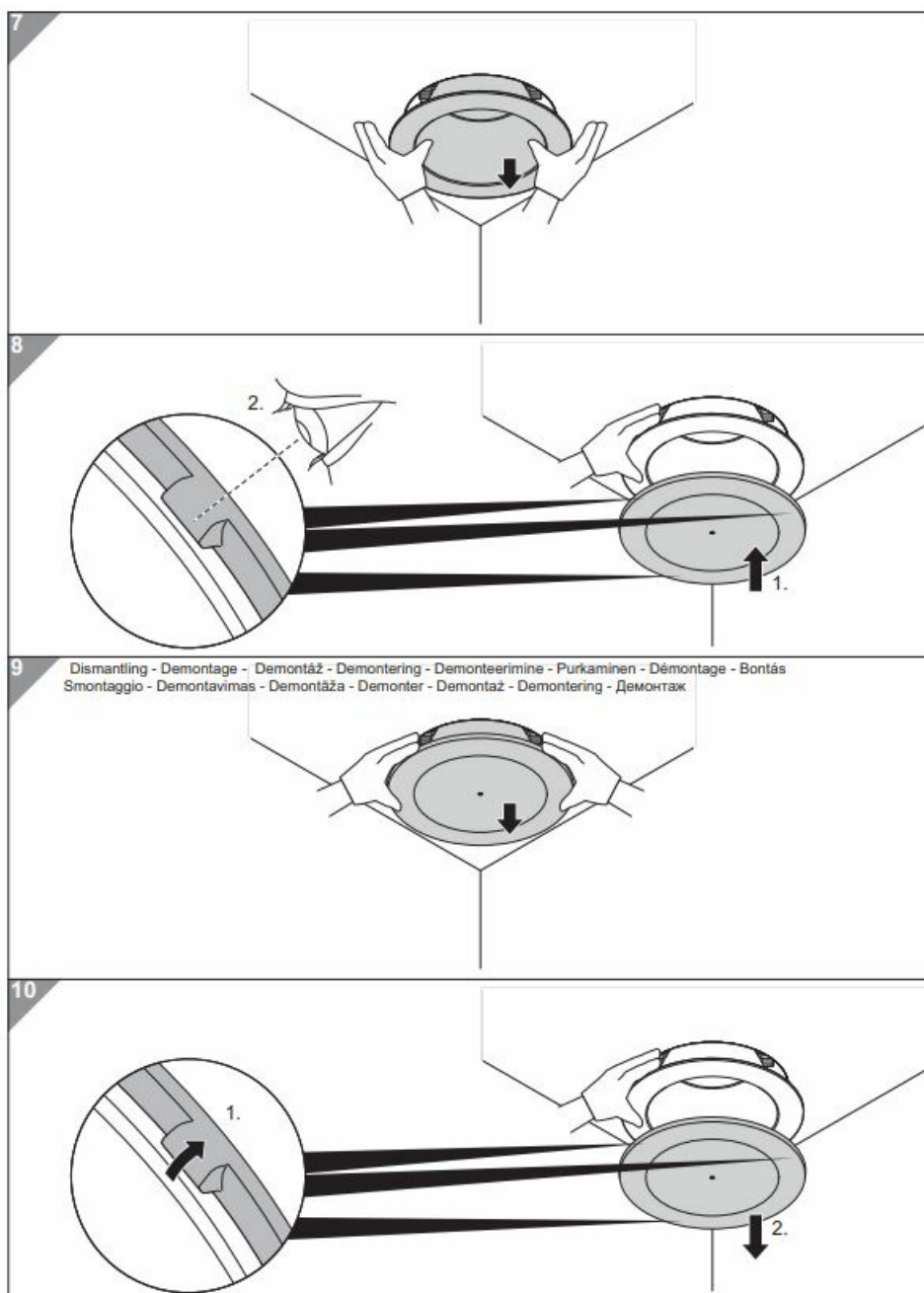
IP54 applies only to light outlet opening.



Installation instructions

Dismantling

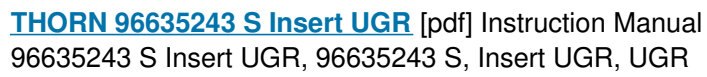




www.thornlighting.com

Mat.-Nr: 06 980 384/4/00 09.22

Documents / Resources



- [!\[\]\(27c3f183a8911a7dac26d53c513f13df_img.jpg\) Welcome to the Thorn Lighting website — English](#)
- [User Manual](#)

Manuals+,