



Thomann Native Instruments Instructions

[Home](#) » [Thomann](#) » Thomann Native Instruments Instructions 

Contents

[1 Thomann Native Instruments Instructions](#)

[1.1 Licensing and installation instructions](#)

[1.2 Customer Account](#)

[1.3 Further helpful links](#)

[2 Documents / Resources](#)

[3 Related Posts](#)

Thomann Native Instruments Instructions



Thomann GmbH

Hans-Thomann-Straße 1
96138 Burgebrach

Telephone: +49 (0)9546 9223 30

Fax: +49 (0)9546 9223 28

E-Mail: studio@thomann.de

Native Instruments

Licensing and installation instructions

After you buy downloadable software from Thomann, you'll receive an e-mail containing an activation code and a link to the web page where you can redeem this code. Alternatively, you'll find this information on a small card in the box the software comes in.

Usually, this is the software manufacturer's homepage, and you'll have to set up your own customer account there, so that a licence can be assigned to you personally.

You'll download your software directly from the manufacturer, too.

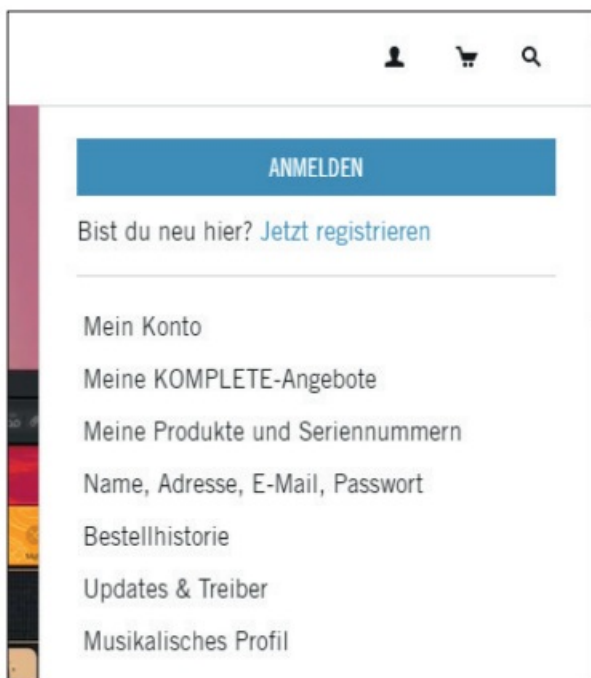
"Please note that all terms taken from the German-language screen shots have been translated and might differ slightly from terms used on the English-language website/programme"

Step 01

Customer Account

Navigate to the manufacturer's website and click on the head symbol top right:

<https://www.native-instruments.com/de/>

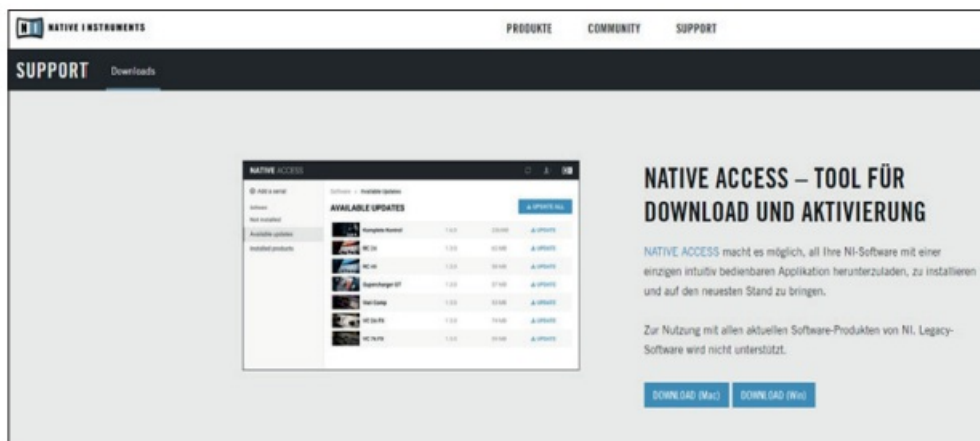


Create a new "Native ID" in "Register now" **Native Access**

Step 02

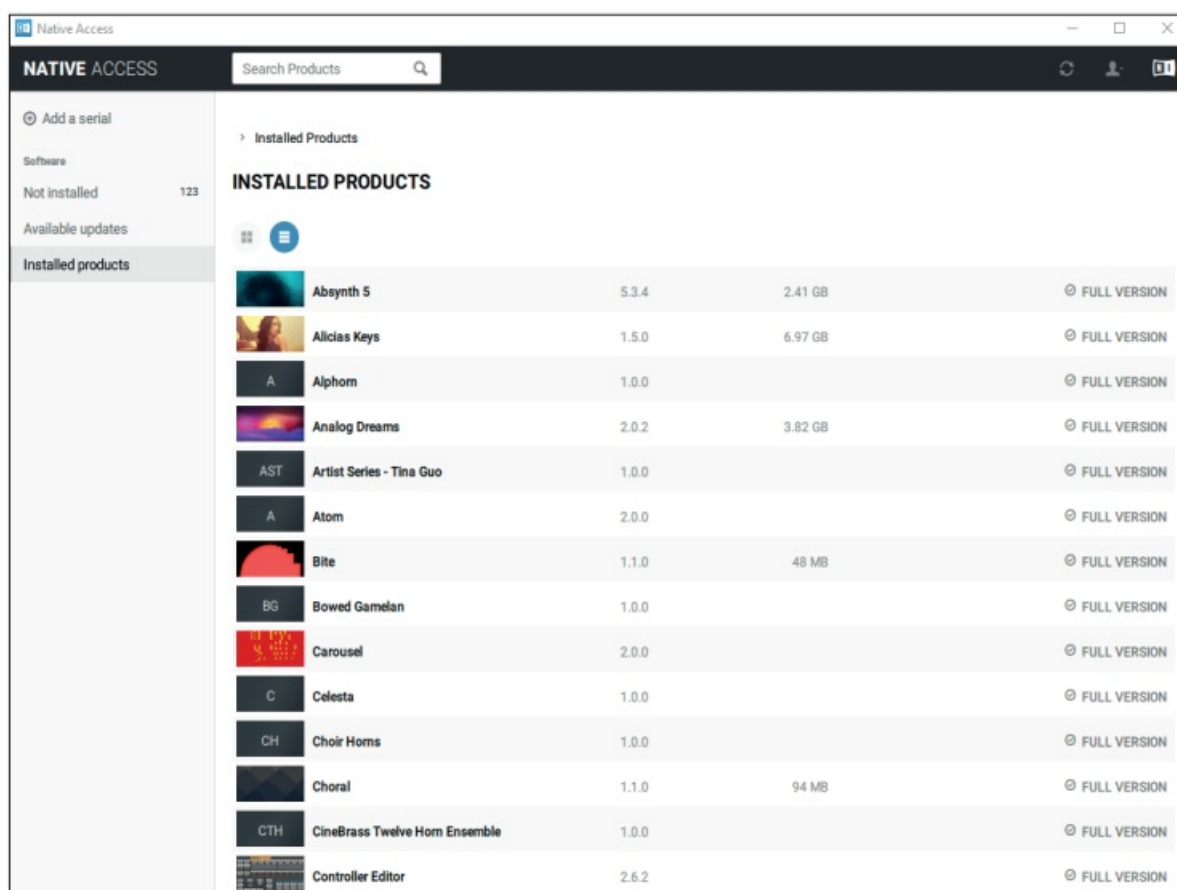
Please then download the "Native Access" programme from this address and install it:

<https://www.native-instruments.com/de/support/downloads/>



You can manage all your Native Instruments software products in the Native Access programme.

This includes, for example, installation, selecting or changing file paths, or notifications on updates.



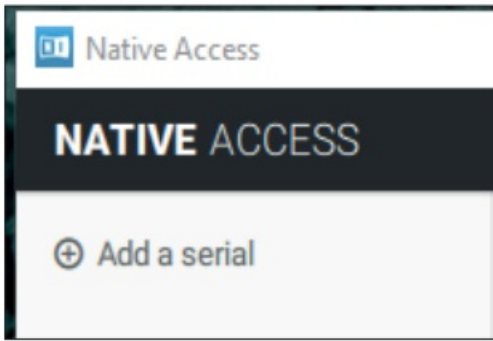
On first starting up Native Access, please log in using your customer information.

Alternatively, you can also create a new customer account using this programme.

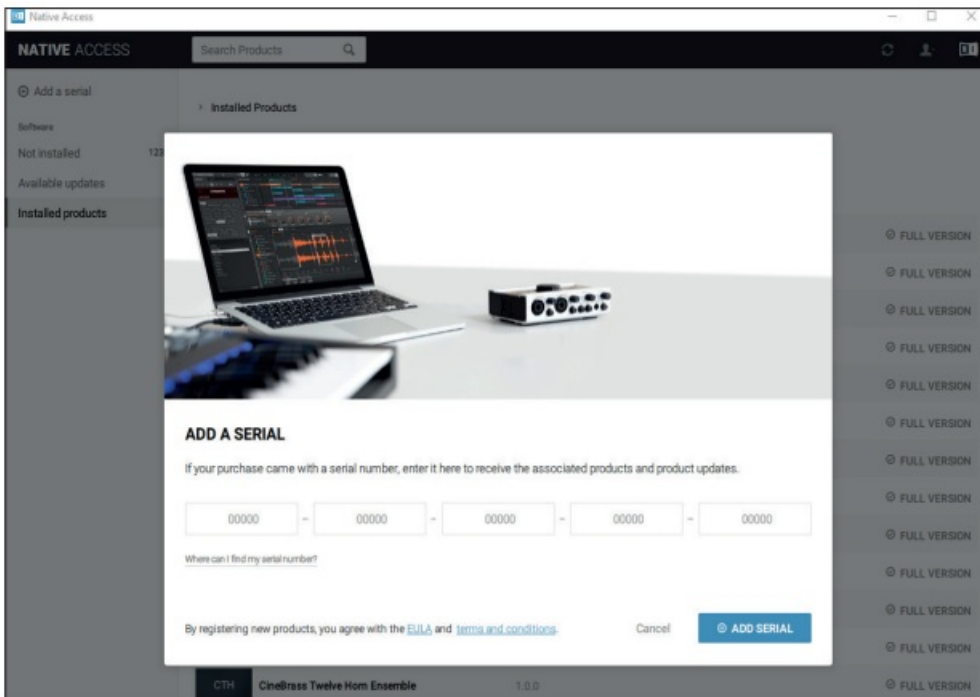
You'll find your activation code on a small card inside the box you have received from Thomann.

If you have purchased hardware, e.g. a controller, you'll likewise find a card with the device's serial number in the packaging.

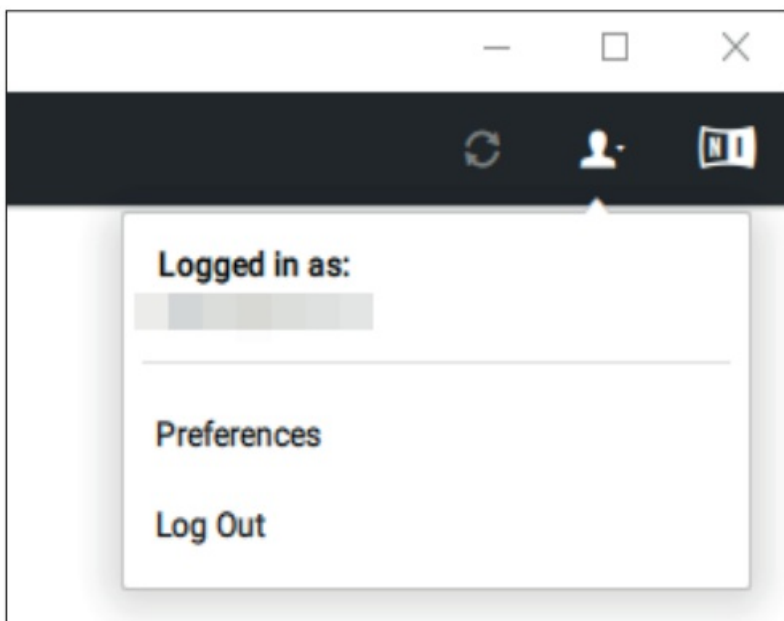
In Native Access, click on "ADD A SERIAL" top left to enter this code and thereby register the product you have bought.



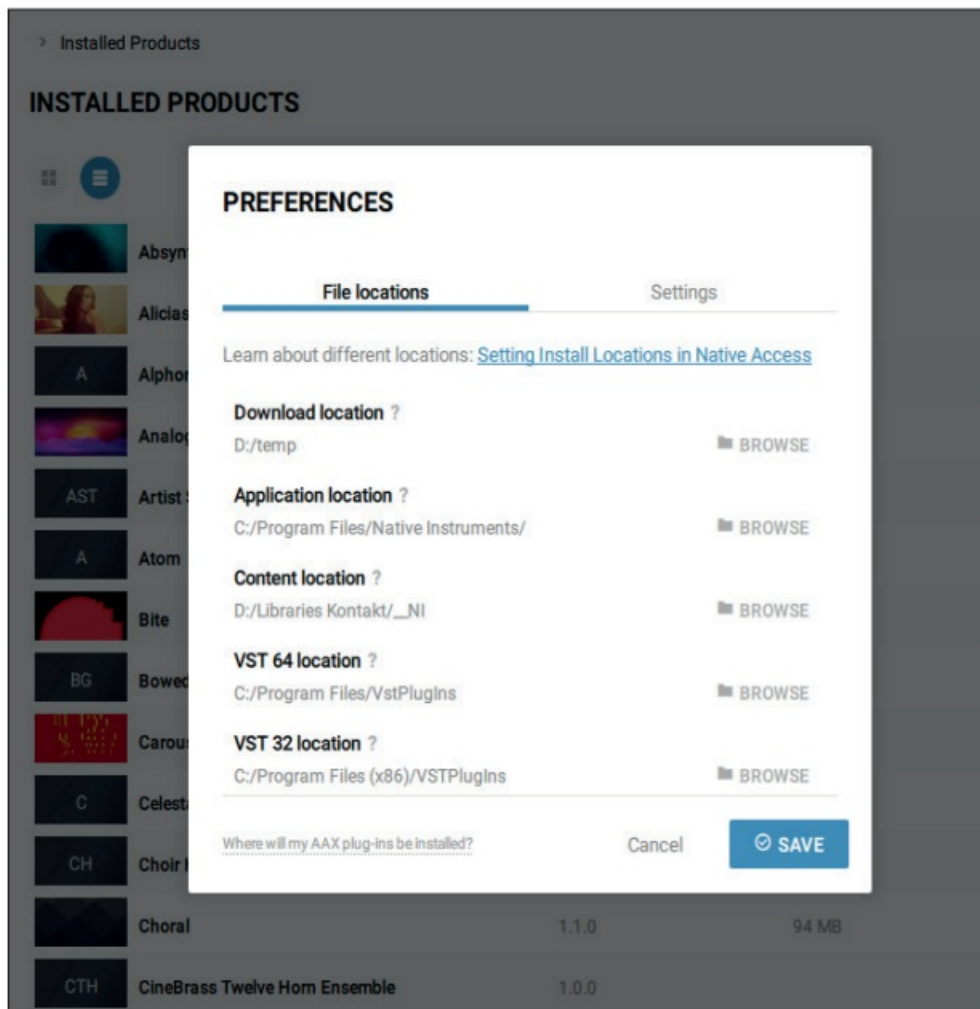
You'll find the blue "ADD SERIAL" button at bottom right in this window. By clicking it, a license will be activated for your code in your customer account by the manufacturer.



In Native Access, too, you'll find the head symbol at top right.



You can determine your settings in “Preferences”, e.g. set the standard path for installing your instrument libraries.



Please note that many instruments will require several gigabytes of storage space. It is therefore advisable to install a separate additional data hard disc of significant size in your computer and select it as the standard destination for downloads.

In “Not Installed”, you’ll find all products in Native Access which you have not currently installed on your computer.

To the right of each product, there will be an “Install” button. Clicking it will install the selected application in the pre-set destination in your computer. In order to save storage space, you may also choose to install only selected instruments, for example.

When you buy KOMplete from Thomann, you’ll also receive a drive (a USB flash drive, for example, with KOMplete SELECT) which contains the installation files.

If you connect this drive to your computer via USB, Native Access will recognize it automatically and you can install the library directly instead of having to download the library from the internet (which can take some time).

By the way, if you want to uninstall an application from your computer, you can do this using the regular uninstaller provided by your operating system.

Further helpful links

You might also want to watch this helpful YouTube video provided by the manufacturer:

Registering and Installing a Native Instrument Product

https://www.youtube.com/watch?v=pMlqfY6_cEM

And here you can contact the manufacturer's support directly:

<https://support.native-instruments.com/>

Should you encounter any problems with the validity of an activation code purchased from us, please contact our customer service:

By telephone:

09546-9223-68

By e-mail to:

sc.cc@thomann.de

Documents / Resources



[Thomann Thomann Native Instruments](#) [pdf] Instructions
Thomann, Native, Instruments