

 **THIRDREALITY**
**Zigbee Contact
Sensor**



THIRDREALITY Zigbee Contact Sensor Instruction Manual

[Home](#) » [THIRDREALITY](#) » THIRDREALITY Zigbee Contact Sensor Instruction Manual 

Contents

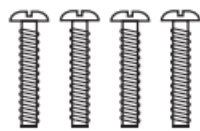
- [1 THIRDREALITY Zigbee Contact Sensor](#)
- [2 Mounting Kit](#)
- [3 Setting up your Door Sensor](#)
- [4 Pairing with Eero](#)
- [5 Pairing with Third Reality](#)
- [6 Troubleshooting](#)
- [7 Documents / Resources](#)
 - [7.1 References](#)
- [8 Related Posts](#)



THIRDREALITY Zigbee Contact Sensor



Mounting Kit



Screw x 4

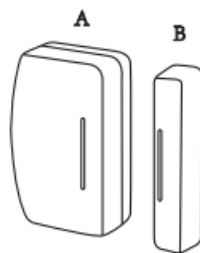


Battery x 2



Double-sided Tape

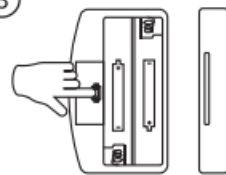
①



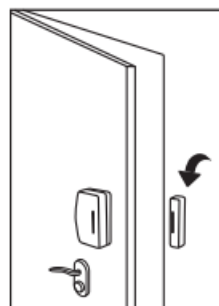
②



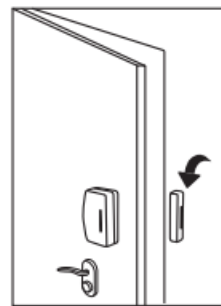
③



④



(Correct)



(Incorrect)

Setting up your Door Sensor

1. Follow the instructions and set up your compatible Zigbee hub.

2. The sensor comes with two parts, A and B (Fig. 1). Press to open part A (Fig. 2), install the batteries and close the back cover, the LED indicator flashes rapidly in blue, the sensor is now ready for setup. Long press the reset button (Fig. for 3 seconds to factory reset the sensor and put it into pairing mode again when needed.
3. Follow the instructions and pair the sensor with your Zigbee hub.

Pairing with Different Hubs Pairing with Amazon Echo

- **Compatible Device:** Echo V4, Echo Plus V1 & V2, Echo Studio, Echo Show 10 Gen2 & Gen3
- **App:** Amazon Alexa App



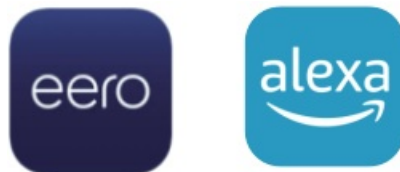
Pairing Steps

1. Make sure the app and the firmware of your Echo devices has been updated to the latest version.
2. Start adding devices by saying "Alexa, discover my devices", or open Alexa App, go to device page, tap "+" on top right, choose "Add Device", then click "other" by sliding down, tap "DISCOVER DEVICES", the sensor will be paired to Alexa within seconds.

Pairing with Eero

Compatible Devices: Eero 6 & Eero 6 Pro

App: Eero App Alexa App



Pairing Steps

1. Make sure that the Eero App account is logged in and the gateway is properly connected.
2. Open Alexa App and register your account, then enable Eero Skill to Alexa App.
3. Make sure the firmware of your Echo devices have been updated to the latest version, start adding devices by saying "Alexa, discover my devices", or open Alexa App, go to device page, tap "+" on top right, choose "Add Device", then click "other" by sliding down, tap "DISCOVER DEVICES", the sensor will be added within seconds.

Pairing with SmartThings

- **Compatible Devices:** SmartThings Hub 2015 & 2018 Aeotec
- **App:** SmartThings App



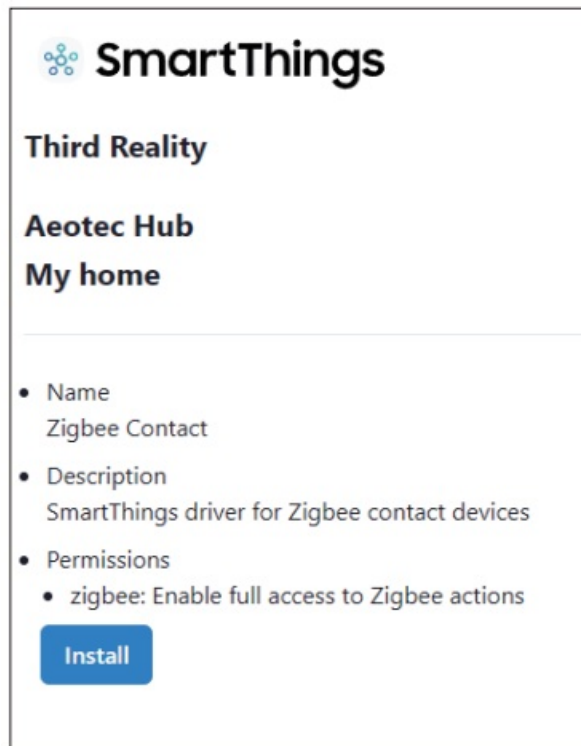
Pairing Steps

1. Make sure the app and the firmware of the SmartThings hub have been updated to the latest version before pairing.
2. Open the SmartThings App, and tap “+” on the top right. Then click “Add Devices” and choose “Scan nearby”, the sensor will be added within seconds.

How to add SmartThings drivers for Third Reality Contact Sensor

1. Open this link in your PC browser. <https://bestow-regional.api.smarththings.com/invite/adMKr50EXzj9>
2. Log in to your SmartThings.
3. Click “Enroll” –“Available Drivers” — “Install” to install the device driver as needed.

SmartThings	SmartThings
Channel Information <ul style="list-style-type: none">• Name Third Reality• Description SmartThings driver for Third Reality devices• Terms of Service	Channel Information <ul style="list-style-type: none">• Name Third Reality• Description SmartThings driver for Third Reality devices• Terms of Service
My Hubs Aeotec Hub My home Enroll	My Hubs Aeotec Hub My home Unenroll Available Drivers



4. Reboot your SmartThings hub by powering it off and power it on again.
5. "Scan for Nearby Devices" in SmartThings App to pair the THIRDRREALITY devices with your SmartThings hub.
6. You can change the driver of the sensor in SmartThings App.

Pairing with Home Assistant

ZigBee Home Automation(ZHA)

"Settings"->"Devices & Services"->"Zigbee Home Automation", then click "+ Add Device", the sensor will be added within seconds.

ZigBee2MQTT(Z2M)

Start ZigBee2MQTT addon, then click "Permit join" to start adding devices, the sensor will be added within seconds.

Pairing with Third Reality

- **Hub:** Third Reality Smart Hub
- **App:** Third Reality App



Pairing Steps

1. Make sure the app and the firmware of the hub have been updated to the latest version.
2. Open the Third Reality App, go to the device page, tap "+" in the upright, and follow the on-screen instructions to add a device.

Pairing with Habitat

Website: <http://find.hubitat.com/Pairing> Steps:

1. Log in the website, click "Connect to Hub".
2. Click "Devices", "Add", "Add Devices Manually", "ZigBee", then "Start ZigBee Pairing".

Mounting your Door Sensor


1. Make sure the installation surfaces are clean and dry before installation.
2. Attach Part A and B with double-sided tape separately, make sure the marks on two parts should be aligned and facing each other, the space in between should be less than 5/8 inches(16mm) when closed.

Troubleshooting

1. Why can't my Echo discover the door sensor? It has a ZigBee hub built-in.
 - Reboot your Echo by unplugging/plugging it back in.
 - Set the door sensor into pairing mode by long press the reset button inside the device, the blue LED flashes rapidly.
 - Keep the door sensor near the Echo with ZigBee hub build-in, then ask Alexa to "discover devices".
 - If it is still not working, please factory reset your Echo, re-add echo then re-discover device again, then pair it with your Echo device again.
2. I have a SmartThings hub, do I need a special hub for the door sensor?
 1. Enable the SmartThings Skill in your Alexa app and sign in to link your accounts on both platforms.
 2. Go to the Devices tab in your Alexa app and add devices to sync your devices under SmartThings to Alexa: "+" icon(on the upper right corner)->Add Device->Other. Create a routine for the door sensor and light switches in your Alexa app,
 3. you can use door open/close to trigger things like light on/off, or you can set an Alexa "custom message" when the door sensor detects a door is opened.
3. Why nothing shows up for devices or group on the Third Reality app? I am using a SmartThings hub.

Because you are using Echo (Alexa APP) and SmartThings (SmartThings APP), it will bypass Third Reality app. Only when you are using Third Reality Hub (which is equivalent to SmartThings Hub), then the Third Reality app is required and will show the device in the app.

Documents / Resources

 <p>Door Sensor</p>	<p>THIRDREALITY Zigbee Contact Sensor [pdf] Instruction Manual Zigbee Contact Sensor, Contact Sensor, Sensor</p>
--	--

References

- [User Manual](#)

[Manuals+](#), [Privacy Policy](#)

This website is an independent publication and is neither affiliated with nor endorsed by any of the trademark owners. The "Bluetooth®" word mark and logos are registered trademarks owned by Bluetooth SIG, Inc. The "Wi-Fi®" word mark and logos are registered trademarks owned by the Wi-Fi Alliance. Any use of these marks on this website does not imply any affiliation with or endorsement.