



THIRDREALITY B09STWVKS5 ZigBee Smart Blind User Manual

[Home](#) » [THIRDREALITY](#) » THIRDREALITY B09STWVKS5 ZigBee Smart Blind User Manual 

Contents

- 1 THIRDREALITY B09STWVKS5 ZigBee Smart Blind
- 2 Product Information
- 3 Product Usage Instructions
- 4 Using Buttons and LED Indicators
- 5 Product Instruction
- 6 Product Features
- 7 Product Details
- 8 Installation
- 9 Local Use of Smart Blind
- 10 Pairing with Different Brands
- 11 Using Smart Blind
 - 11.1 Pairing with Home Assistant
- 12 Using Smart Blind
- 13 Troubleshooting
- 14 FCC Regulatory Conformance
- 15 Documents / Resources
 - 15.1 References
- 16 Related Posts



THIRDREALITY B09STWVKS5 ZigBee Smart Blind



Product Information

Specifications

- **Compatibility:** Compatible with Echo devices with ZigBee hub built-in (including Echo 4th Gen, Echo Plus 1st Gen and 2nd Gen, Echo Show 10 2nd Gen and 3rd Gen, and Echo Studio)
- **Connectivity:** ZigBee
- **Compatible Platforms:** SmartThings, Home Assistant, Eero 6 & Eero 6 Pro, Third Reality Hub, and Hubitat Elevation
- **Design:** Bottom drive design
- **Height Adjustment Range:** Up to 72 inches
- **Power Source:** AA batteries (4 included)
- **Battery Life:** More than 6 months
- **Functions:** Schedule, group, and routine control via Alexa App
- **Material:** Non-woven fabric with aluminum foil
- **Safety Feature:** Cordless design
- **LED Indicator:** Yes

Product Usage Instructions

Compatibility and Setup

- The Smart Blind is a standard ZigBee device that can directly work with compatible Echo devices with the ZigBee hub built-in.
- It can also be connected to other platforms such as SmartThings, Home Assistant, Eero 6 & Eero 6 Pro, Third Reality Hub, and Hubitat Elevation.

Installation

Note: Ensure you have the necessary tools like a PH2 screwdriver and an electric drill with an M5 drill bit for installation.

Inside Mount Installation

1. Measure and mark the position of the bracket according to the provided diagram.
2. For wooden surfaces, use the PH2 screwdriver and provided screws to secure the bracket.
3. For masonry surfaces, use the M5 drill bit to drill a pilot hole and insert the provided plastic expansion bolt. Secure the bracket with the provided screw using the PH2 screwdriver.

Outside Mount Installation

Note: Make sure you have at least 4.3 inches of flat space above the window if you want to expose the whole window when the smart blind is fully closed.

1. Follow the same steps as inside mount installation to secure the brackets.

Operation

The Smart Blind can be controlled through compatible Echo devices or other supported platforms.

Using Alexa App

- Once connected, you can use the Alexa App to access multiple functions such as scheduling, grouping, and creating routines for your Smart Blind.
- For example, you can set your blind to open or close automatically based on sunset or sunrise time.

Using Buttons and LED Indicators

The Smart Blind features buttons and an LED indicator for manual control:

- **Up Button:** Retracts the blind
- **Setting Button:** Single press to stop, long Press to enter pairing mode
- **Down Button:** Extends the blind

The LED indicator provides visual feedback:

- **Fast blinking:** Pairing mode
- **Slow blinking:** Off-line
- **Double blinking:** Low power

Maintenance

To replace the batteries, locate the battery cover and ensure you pay attention to the positive and negative terminals of the batteries. The Smart Blind is powered by 4 AA batteries.

Safety Precautions

The Smart Blind's cordless design ensures safety for children and pets.

Usage Tips

- The non-woven fabric with aluminum foil material of the Smart Blind provides good thermal insulation, noise absorption, privacy protection, and light control.
- It is an ideal indoor window treatment for bedrooms, living rooms, patio sliding doors, etc.

FAQ (Frequently Asked Questions)

Q: What Echo devices are compatible with the Smart Blind?

- **A:** The Smart Blind is compatible with Echo devices with ZigBee hub built-in, including Echo 4th Gen, Echo Plus 1st Gen and 2nd Gen, Echo Show 10 2nd Gen and 3rd Gen, and Echo Studio.

Q: Can I control the Smart Blind using platforms other than Echo devices?

- **A:** Yes, the Smart Blind can also connect with SmartThings, Home Assistant, Eero 6 & Eero 6 Pro, Third Reality Hub, and Hubitat Elevation.

Q: How long do the batteries last?

- **A:** The Smart Blind has a battery life of more than 6 months.

Q: Is the Smart Blind safe for children and pets?

- **A:** Yes, the cordless design of the Smart Blind ensures safety for children and pets.

Q: What functions are available through the Alexa App?

- **A:** The Alexa App allows you to schedule, group, and create routines for your Smart Blind.
- You can set it to open or close based on sunset or sunrise time, among other functions.

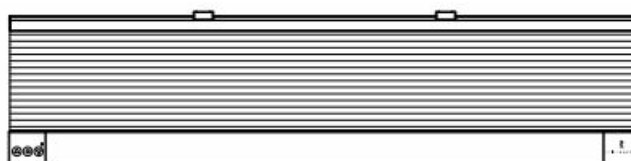
Product Instruction

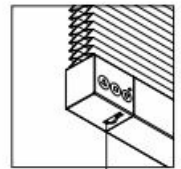
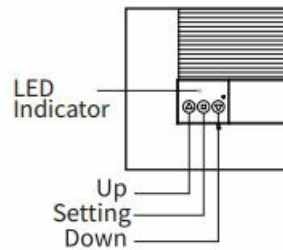
- THIRDREALITY ZigBee Smart Blind, a smart honeycomb curtain with simple installation and convenient control (both online and offline). We offer 20 sizes, choose the size according to the width of your window. No worry about the height. The Smart Blind has a thoughtful design on the bottom which can automatically detect the window sill and then stop. Smart Blind is designed to run on Alkaline battery power and the drive unit is at the bottom of the blind, making the battery replacement more convenient. Install the battery to realize the remote control and local control. More intelligent control like voice control, app control, creating routines, setting schedules/timers, and setting groups can be achieved by connecting to gateways.
- Such as compatible Echo devices(which have Zigbee hub built-in), SmartThings, Home Assistant, Eero 6 & Eero 6 Pro, Third Reality Hub, and Habitat.

Product Features

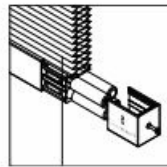
1. Directly work with compatible Echo devices Smart Blind is a standard ZigBee device. It can directly work with compatibility.
 - Echo devices with ZigBee hub built-in (including Echo 4th Gen, Echo Plus 1st Gen and 2nd Gen, Echo Show 10 2nd Gen and 3rd Gen, and Echo Studio).
2. **Work with multiple platforms.**
 - Smart Blind can also connect with SmartThings, Home Assistant, Eero 6 & Eero 6 Pro, Third Reality Hub, and Hubitat Elevation.
3. **Unique and novel design**
 - Smart blind uses a bottom drive design, which makes daily operation more convenient and easier to replace the battery. With the design of the bottom sensor, it's easier and more convenient to adjust the height of the blind within 72 inches at any time.
4. **No worry about power support**
 - With more than 6 months of life support, AA batteries are cheap and easy to change. No worry about whether your window is too high to charge or without an outlet. No worry about batteries being dead, but it is hard to find replacement batteries.
5. **Functions provided by the Alexa App**
 - Smart Blind works with Alexa and it has multiple functions, including schedule, group, and routine. Set your blind on or open according to the sunset or sunrise time, etc.
6. **Good shading and cordless design**
 - Non-woven fabric with aluminum foil provides good thermal insulation and noise absorption, as well as privacy protection and light control, which makes it an ideal indoor window treatment for bedrooms, living rooms, patio sliding doors, etc. The cordless design makes it safe for children and pets.

Product Details





Bottom Sensor



LED Status & Buttons

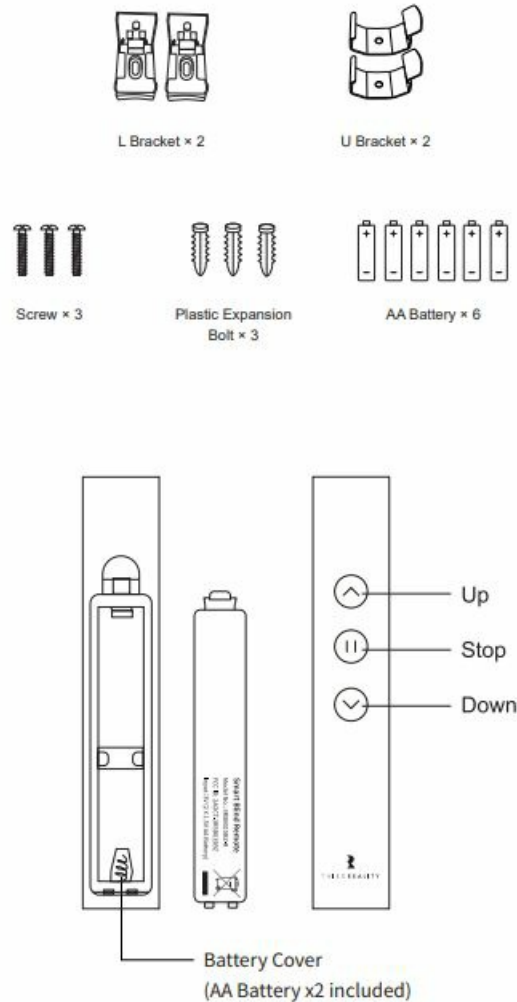
- **Fast blinking:** pairing
- **Slow blinking:** off-line
- **Double blinking:** low power Up retract
- **Setting:** single press to stop/long press to enter pairing mode Down: extend

Bottom Sensor

- When the Smart Blind is extending, if the Bottom Sensor hits any surface (like the window sill or your finger), it will stop at this position.
- The Bottom Sensor is also used to “Set the position where you want the bottom of your Smart Blind to rest”.

Battery Cover

- Pay attention to the positive and negative terminals of the Batteries.
- **Battery Cover** (AA Battery x4 included)



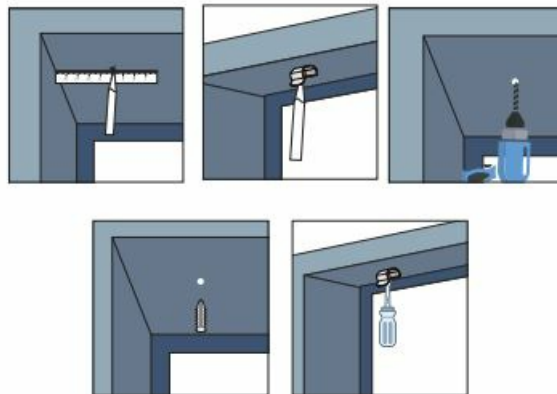
Installation

- **THIRDREALITY** Smart Blind supports both inside and outside mount, a pair of L brackets, and a pair of U brackets, screws, and plastic expansion bolts are provided.
- Please prepare a PH2 screwdriver for the mount; For the masonry surface please prepare an electric drill with an M5 drill bit.
- Make sure the THIRDREALITY logo of the Smart Blind and the button of the L brackets or the flange of the U brackets face in when installed.

1. Choose an inside or outside mount as needed. Make sure your window recess meets the minimum depth requirement of 2" for the inside mount.
 - For the outside mount, if you want to expose the whole window when the smart blind is fully closed, make sure you have at least 4.3" of flat space above the window.
 - **a. Inside Mount**

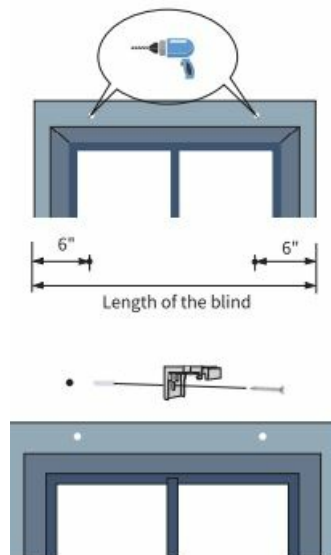


- According to the diagram, measure and mark the position;
- For wooden surfaces use a PH2 screwdriver and the provided screws to secure the bracket.
- For masonry surface use a M5 drill bit to drill a pilot hole for the provided plastic expansion bolt. Insert the plastic expansion bolt into the pilot hole, then use a PH2 screwdriver to secure the bracket with the provided screw.

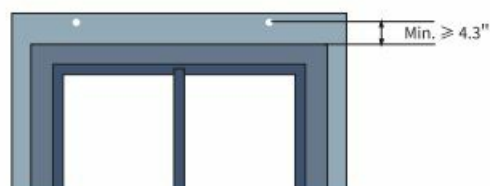
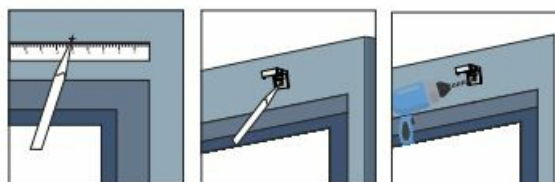


• **b. Outside Mount**

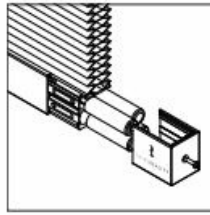
- According to the diagram, measure and mark the corresponding position.



- For wooden surfaces use a PH2 screwdriver and the provided screw to secure the bracket.
- For masonry surface use an M5 drill bit to drill a pilot hole for the provided plastic expansion bolt. Insert the plastic expansion bolt into the pilot hole, then use a PH2 screwdriver to secure the bracket with the provided screw.
- Insert the plastic expansion bolt into the hole, then use a PH2 screwdriver to fasten the bracket with the provided screw.

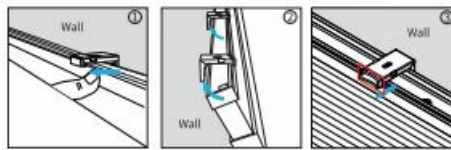


2. Unscrew the screw with the PH2 screwdriver to open the battery cover, install 4 provided AA batteries, and close and secure the battery cover with the screw.



3. Outside Mount/Inside Mount

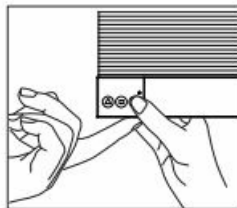
- **Outside Mount:** Firstly align the outside of the top rail with the brackets, then push up the smart blind to get it into place. The bracket's button pops up and makes a clicking sound, indicating it is secured. To uninstall the smart blind, push the button of the brackets and then pull down the smart blind.
- **Inside Mount:** Firstly align the inside of the top rail with the brackets, then push up the smart blind to get into place. To uninstall the smart blind, push the outside of the brackets and then pull down the smart blind.



- **Note:** Please shake the blind to ensure the blind and the Extension Bracket are in close contact.

4. Set the position where you want the bottom of your Smart Blind to rest

- Press the UP button and let the Smart Blind retract to the highest position, now the Smart Blind returns to the original zero percent.
- Press the DOWN button to let the Smart Blind extend, and stop the bottom rail at your desired position by pressing the setting/stop button.
- Now hold up the bottom sensor with your finger first, then press the DOWN button, after releasing the DOWN button first, release the bottom sensor, now you have set this position as the preset bottom position, the Smart Blind will stop at this position automatically next time when extending.



- Scan this QR code with your mobile device to watch the instruction video on YouTube.



Local Use of Smart Blind

Optimum height:

- The height of our ThirdReality Smart Blind support is 72 inches at maximum.

Local Control:

- Controlling buttons are provided on the blind body and IR remote. You can control the blind through these buttons.
- Our Smart Blinds also support App control or voice control by pairing with multiple devices, We have another manual to guide you with the pairing.

Pairing with Different Brands

Pairing with Amazon Echo

- **Compatible Device:** Echo V4, Echo Plus V1 & V2, Echo
- **Studio,** Echo Show 10 Gen2 & Gen3
- **App:** Amazon Alexa App



Pairing Steps:

1. Long press the setting button of the blinds for more than 5 seconds until the LED light flashes rapidly in red, indicating that the Smart Blind is in pairing mode.
2. Before pairing, make sure the Echo devices have been updated to the latest version. Then directly say "Alexa, discover my devices". Or you can open the Alexa App, go to the device page, tap "+" on the top right, choose "Add Device", then click "other" by sliding down, tap DISCOVER DEVICES", wait for a few seconds, the Smart Blind will be paired to Alexa.
3. After the pairing is successful, you can control the blinds by voice and App.

Using Smart Blind

Optimum Height:

- The height of our ThirdReality Smart Blind support is 72 inches at maximum.

Voice Control

- Alexa, turn on / off first blind."
- Alexa, set/turn on / turn off / turn up / turn down / open/close first blind to 50%."

Routines

- You can create routines in your Alexa App to turn on/off the Smart Blind or set any open percentage, for example, you can create a routine with a motion sensor as a trigger to open the Smart Blind when you enter the room, or you can create a routine to open/close your Smart Blind at sunrise/sunset.
- **Note:** A voice command "Alexa, turn on first blind." cannot be interrupted by a voice command "Alexa, turn off

first blind.” and vice versa.

- A voice command “Alexa, set first blind to 80%” can be interrupted by another voice command “Alexa, set first blind to 20%.”

Pairing with Eero

- **Compatible Devices:** Eero 6 & Eero 6 Pro
- **App:** Eero App Alexa App



Pairing Steps:

1. Make sure that the Eero App account is logged in and the gateway is properly connected.
2. Open the Alexa App and register your account, then enable Eero Skill to the Alexa App.
3. Long press the setting button of the blinds for more than 5 seconds until the LED light flashes rapidly in red, indicating that the Smart Blind is in pairing mode.
4. Before Pairing, make sure the Echo devices have been updated to the latest version, then directly say “Alexa, discover my devices”. Or you can open Alexa App, go to the device page, tap “+” on the top right, choose “Add Device”, then click “Other” by sliding down, tap “DISCOVER DEVICES”, and wait for a few seconds, the smart blinds will be paired to Alexa.
5. After the pairing is successful, you can control the blinds by voice and App.

Pairing with SmartThings

- **Compatible Devices:** SmartThings Hub 2015&2018, Aeotec
- **App:** SmartThings App



Pairing Steps:

1. Long press the setting button of the blinds for more than 5 seconds until the LED light flashes rapidly in red, indicating that the Smart Blind is in pairing mode.
2. Open the SmartThings App, tap “+” on the top right. Then click “Add Devices” and choose “Scan nearby”.
3. After the pairing is successful, it will be displayed as “Third Reality Smart Blind” on the page.
4. You can control the Smart Blind on its details page now.
5. You also can make your Smart Blind smarter by adding automation in the SmartThings App.

Pairing with Home Assistant

Pairing Steps:

1. Long press the setting button of blinds for more than 5 seconds until the LED flashes rapidly in red, indicating that the Smart Blind is in pairing mode.
2. Make sure Home Assistant Integrations ZigBee Home Automation Setup is ready, then click "+ Add Device" on the Device Page.
3. After the pairing is successful, it will be shown as Third Reality, Inc 3RSB015BZ" on the page.
4. Back to the "Devices & Services" page, click the device list under the "HubZ Smart Home Controller" button, and then you can find the Smart Blind added before. Click to enter in the control interface to operate the Smart Blind.
5. You can add "Automated Actions" and check the device status on the "Device" page.

Pairing with Third Reality

- **ZigBee Hub Prepare:** Third Reality Smart Hub
- **App:** Third Reality App



Pairing Steps:

1. Long press the setting button of the blinds for more than 5 seconds until the LED light flashes rapidly in red, indicating that the Smart Blind is in pairing mode.
2. Open the Third Reality App, go to the device page, tap "+" belongs to the Hub, choose "Smart Blind", then click "Pair".
3. After the pairing is successful, tap "Complete", and then back to the main interface.
4. Tap the "Smart Blind" icon on the device page, you can see the details, such as Battery, History Records and etc.
5. Follow the instructions to control Smart Blind.

Using Smart Blind

Enable Alexa Skill:

- After adding the Smart Blind to your Third Reality Smart Hub, enable Third Reality Skill and tap "DISCOVER DEVIC-ES" in your Alexa App, now you can use the voice assistant or create routines in your Alexa App to control the Smart Blind.

Pairing with Habitat

Website: <http://find.hubitat.com/>

Pairing Steps:

1. Long press the setting button of blinds for more than 5 seconds the LED light flashes rapidly in red, indicating that the Smart Blind is in pairing mode.

2. Log in to the website, and click "Connect to Hub".
3. After pairing with Hub, choose "Devices", then click "Discover Devices", Tap "ZigBee", and Choose "Start ZigBee Pairing".
4. After the pairing is successful, it will show on a page a "ThirdReality Smart Blind". Click "Label" to rename the Smart Blind and then tap "Save".
5. Go to the Device page, you will see the Smart Blind, and then click in, you will see the controlling buttons of "Close", "Open", "Set Level", and "Pause".

Troubleshooting

1. Factory Reset

- Press and hold the setting button of the blinds for more than 5 seconds until the LED light flashes rapidly in red, indicating that the Smart Blind is in pairing mode. Every time you factory reset the Smart Blind, your preset bottom position will be reset to default (72"), you need to reset your desired bottom position.

2. Fail to pair with Echo

- Make sure your Echo Speaker is compatible with Smart Blind (including Echo (4th Gen), Echo Plus (1st Gen and 2nd Gen), Echo Show 10 (2nd Gen and 3rd Gen), and Echo Studio) and updated to the latest version.
- Please ensure your Echo devices are set up before adding the Smart Blind.
- Reboot the Echo speaker by unplugging the power and plugging it back in, then try to pair the Smart Blind with it again.
- Factory reset the Echo speaker (Press and hold the Action button for 25 seconds. The light ring will pulse orange, then turn off. Wait for the light ring to turn back on and turn blue. The light ring then turns orange again and the device enters the setup mode), then tries to pair the Smart Blind with it again.

3. Smart Blind is not responding after pairing with an Echo device

- Check the LED indicator status of the smart blind, blinking once every 3 seconds meaning it is offline, please reboot the Echo speaker and factory reset the Smart Blind, then pair the Smart Blind with the Echo speaker.
- If still does not work, please try to deregister the Echo speaker and register back in, then try to pair the Smart Blind with it.

4. How to change the bottom position of the Smart Blind

- Press the UP button and let the Smart Blind move to the highest position and now the blind returns to the original 0 percent. Use a remote or press the DOWN button on the bottom rail to let the Smart Blind extend, stop the bottom rail at your desired position, hold up the bottom sensor with your finger, and press the DOWN button on the bottom rail simultaneously, you have set this position as the bottom position, the Smart Blind will stop at this position automatically next time when extending.

5. The "up" and "down" buttons of Smart blind reverse to the actual movement

- When this happens, press the "Up" button and let the Smart Blind move to the lowest position. After it reaches the lowest position, it will continue moving to the highest position. Meanwhile, the "Up" and "Down" buttons will correspond with the actual direction of moving.

6. Press the button no response after installation

- Please confirm whether the batteries are installed correctly.

7. How to stop the Smart Blind when it's extending/retracting?

- You can stop the Smart Blind from extending/retracting with a stop command by pressing the Stop button on the bottom rail or the remote, or in your Third Reality App.
- You can not stop it from extending/retracting with commands like pressing Up/Down on the bottom rail or the remote(or in the App), nor with voice command like turn On/Off and Open/Close will not stop the Smart Blind.

FCC Regulatory Conformance

This device complies with Part 15 of the FCC Rules.
Operation is subject to the following two conditions:

1. This device may not cause harmful interference.
2. This device must accept any interference received, including interference that may cause undesired operation.

For troubleshooting, warranty, and safety information, visit www.3reality.com/devicesupport

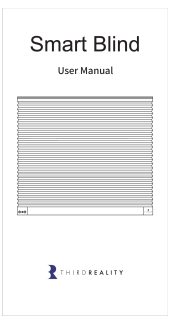
RF Exposure

- This equipment complies with FCC radiation exposure limits set forth for an uncontrolled environment.
- This equipment should be installed and operated with a minimum distance of 20 cm between the radiator and your body. This transmitter must not be co-located or operating in conjunction with any other antenna or transmitter.

Limited Warranty

- For a limited warranty, please visit www.3reality.com/devic-support
- For customer support, please contact us at info@reali-ty.com or visit www.3reality.com
- For help and troubleshooting related to Amazon Alexa, visit the Alexa app

Documents / Resources

 <p>Smart Blind User Manual</p> <p>THIRD REALITY</p>	<p>THIRDREALITY B09STWVKS5 ZigBee Smart Blind [pdf] User Manual B09STWVKS5 ZigBee Smart Blind, B09STWVKS5, ZigBee Smart Blind, Smart Blind, Blind</p>
---	---

References

- [User Manual](#)

[Manuals+](#), [Privacy Policy](#)