

THIRD REALITY MZ1 Smart Bridge Installation Guide

[Home](#) » [THIRD REALITY](#) » THIRD REALITY MZ1 Smart Bridge Installation Guide 

Contents

1

THIRD REALITY MZ1 Smart Bridge

2

Product Overview

3

LED Status

4

Setup with Apple Home

5

FCC regulatory conformance

6

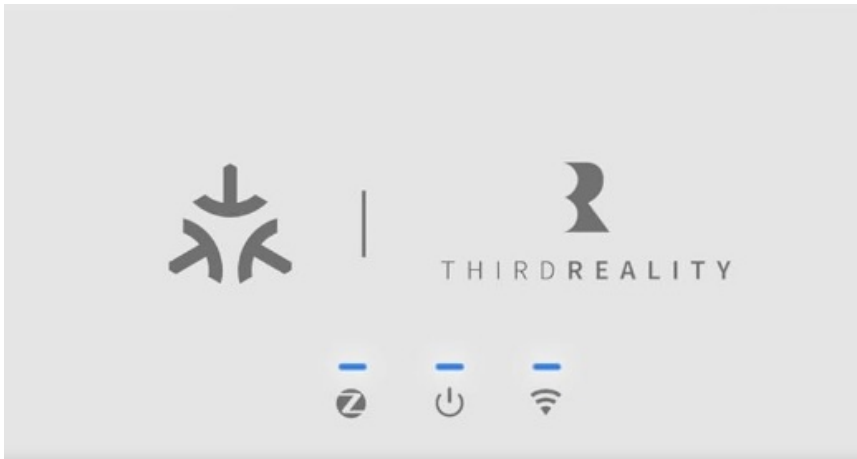
Documents / Resources

6.1

References



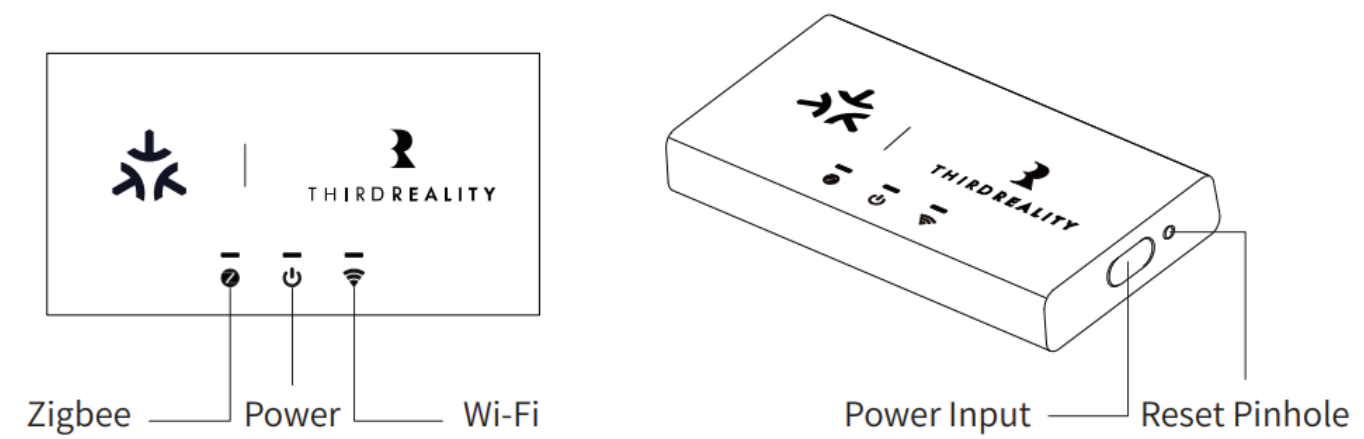
THIRD REALITY MZ1 Smart Bridge



Product Overview

Elevate your smart home with the Smart Bridge MZ1. Designed to bridge Zigbee devices to the Matter protocol, it offers effortless integration with leading smart home platforms. The 3R-Installer App ensures a smooth setup and easy device management. Whether you're at home or on the go, you can control your devices remotely or with simple voice commands. With its compact design, secure connection, and versatility, the Smart Bridge MZ1 is an essential addition to your smart home ecosystem.

LED Status



LED Status	Device Status
Zigbee LED On	Zigbee idle
Zigbee LED slow blinking	Zigbee ready for pairing
Wi-Fi LED fast blinking	Wi-Fi Idle/Ready for setup/Wi-Fi Matter reset
Wi-Fi LED Off	Wi-Fi connection 15 min timeout
Wi-Fi LED On	Wi-Fi connected
Wi-Fi LED slow blinking	Wi-Fi connection lost/resuming
Power LED On	Power on
Power LED slow blinking	Device OTA in progress
Power LED fast blinking	Device/Module self-test fault
All 3 LED fast blinking	Factory reset

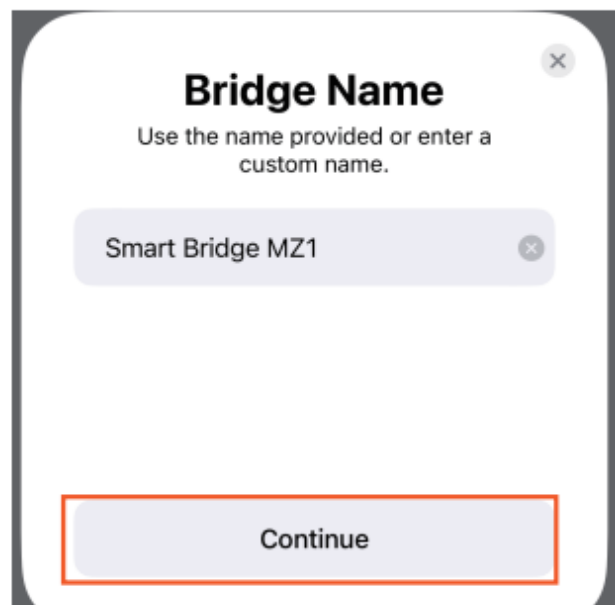
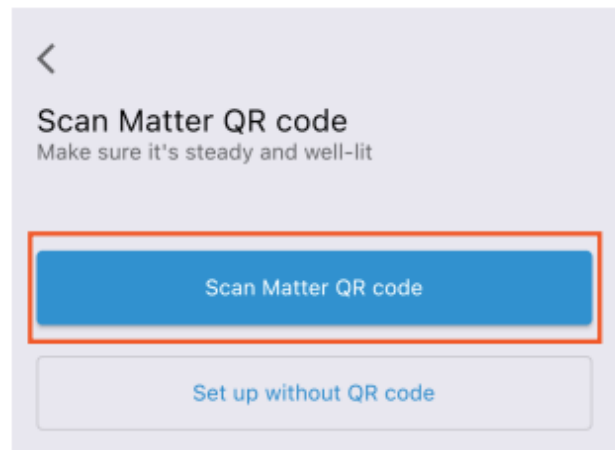
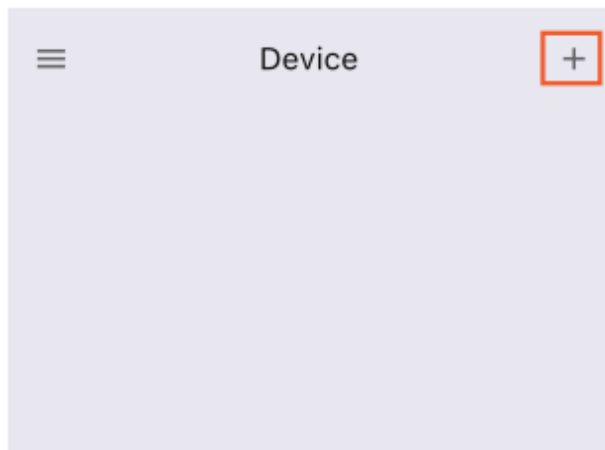
Factory Reset

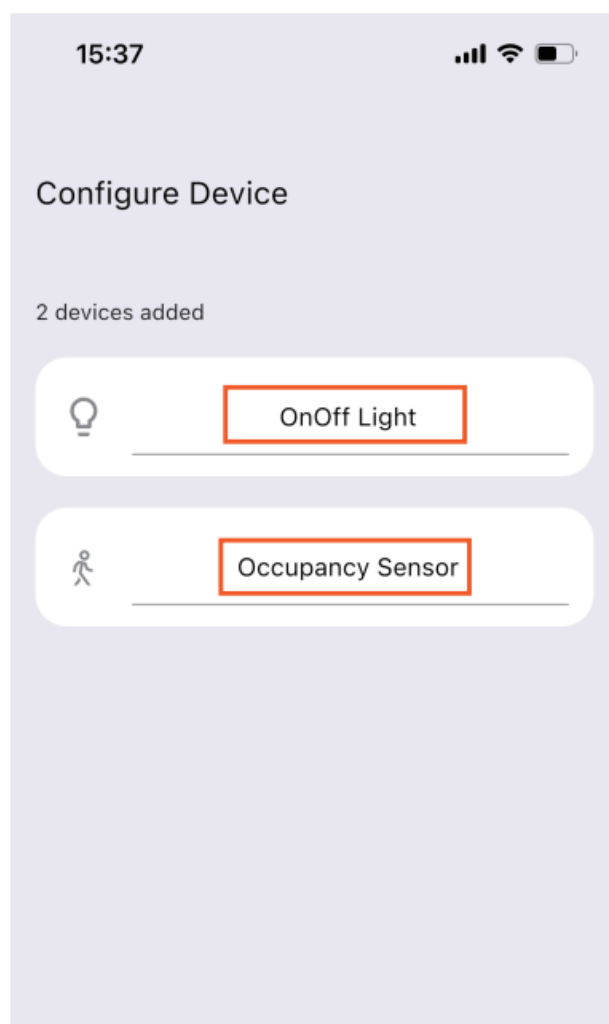
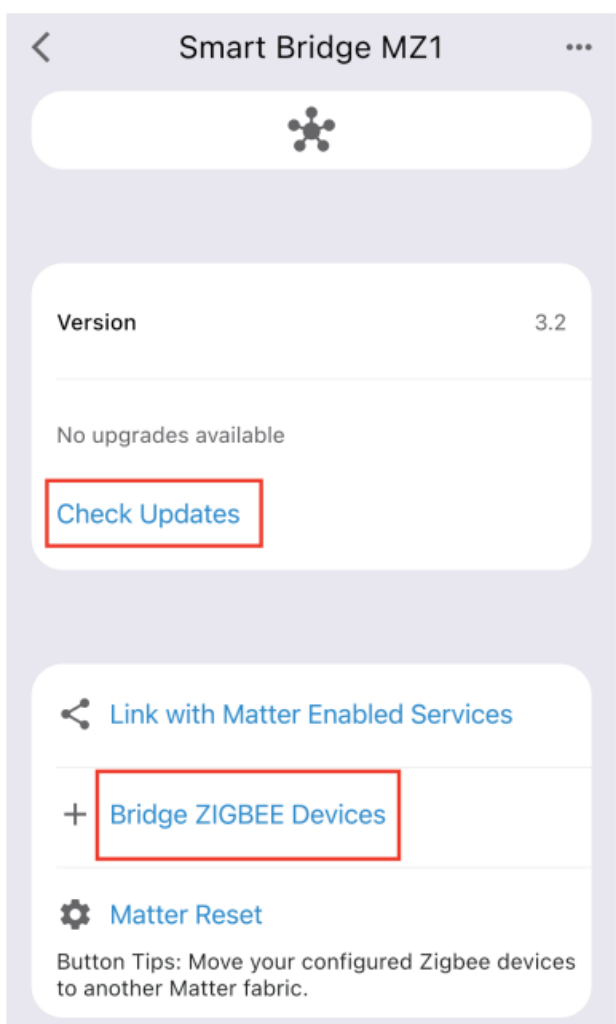
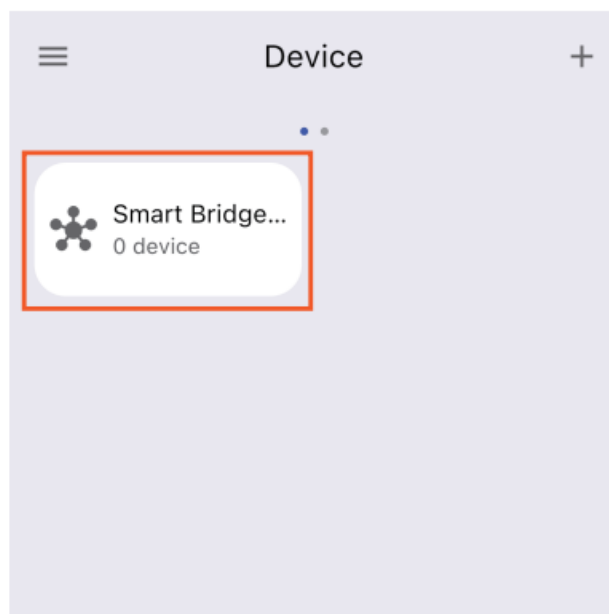
Long press the reset button with a pin through the pinhole until 3 LEDs turn fast blinking.

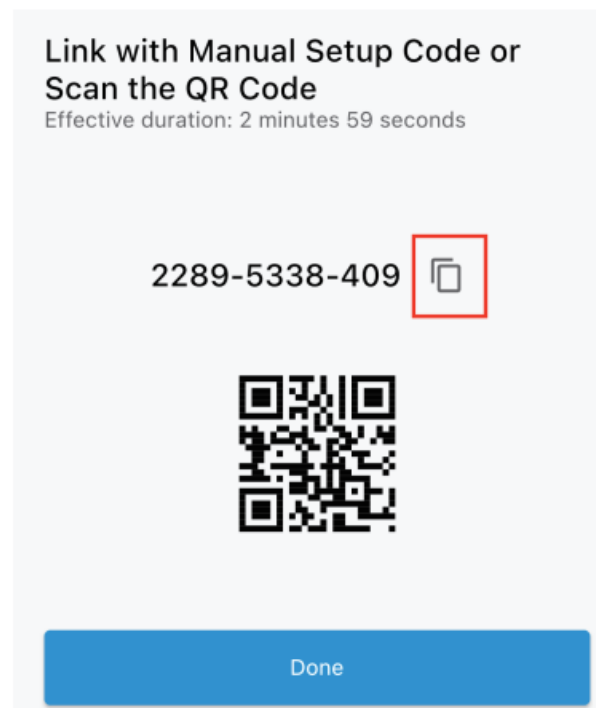
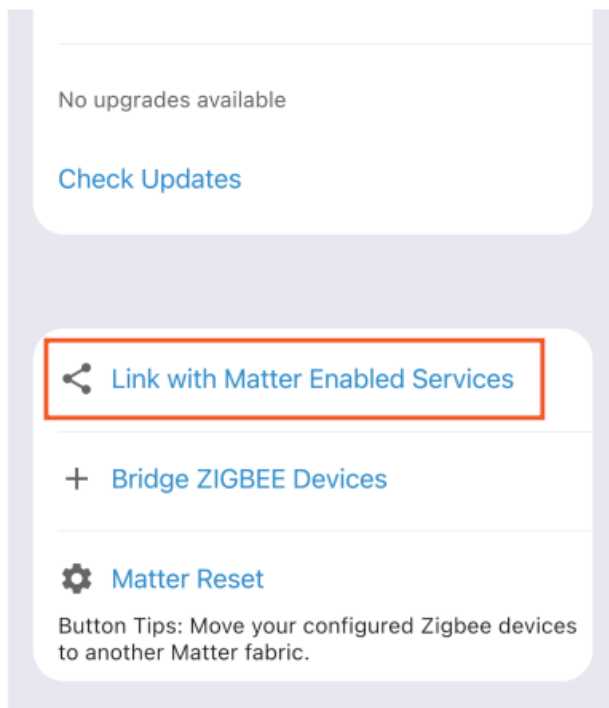
Setup with 3R-Installer



1. Download and install the 3R-Installer App(iOS/Android) on your phone.
2. Turn on Bluetooth on your phone, and make sure your phone has stable internet access through the IEEE 802.11 b/g/n 2.4GHz Wi-Fi network.
3. Power on the Matter Bridge with the power cable and adaptor, and the Wi-Fi LED indicator turns fast blinking, indicating it is ready for Wi-Fi setup.
4. Open the 3R-Installer App on your phone and tap + in the upper right corner.
5. Scan the Matter QR Code and follow the on-screen instructions to configure the Wi-Fi network.
6. After the network configuration is completed, tab the bridge icon to enter the device page, and tab Check Updates for firmware updates. Tab Bridge Zigbee Devices and put the Zigbee devices into pairing mode, pair the THIRDREALITY Zigbee end devices to this bridge. After device configuration, you can find the Zigbee devices on the Smart Bridge device page, tab the device icon to enter the device page, can Check Updates for firmware OTA.
7. Tab Link With Matter Enabled Services, copy the Manual Setup Code or Scan the QR Code within 3 min, then you can add the bridge to other Matter-supported ecosystems through multi-admin.
8. Tab Bridge ZIGBEE Devices to pair more THIRDREALITY Zigbee devices to the bridge.
9. Tab Matter Reset It is highly recommended to download and install the 3R-Installer app on your phone first, follow the instructions below to set the bridge in the 3R-Installer app, then get the setup code and add the bridge to other Matter-supported ecosystems through multi-admin. to remove the bridge from your Wi-Fi router. Zigbee devices connected to the bridge will remain connected. You can use this code to set up the Wi-Fi for the bridge through the 3R-Installer App on your phone connected with another Wi-Fi router.







Setup with Apple Home

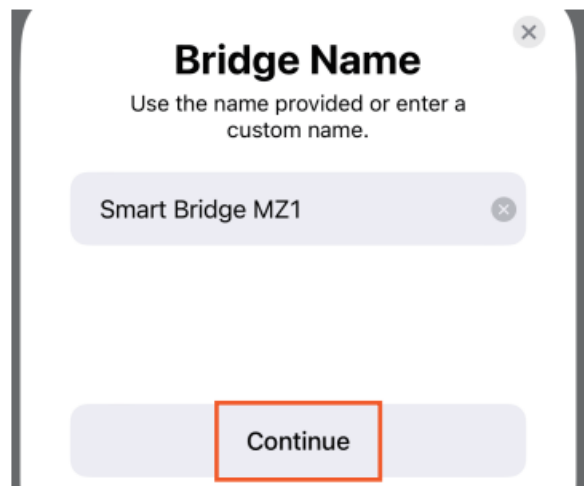
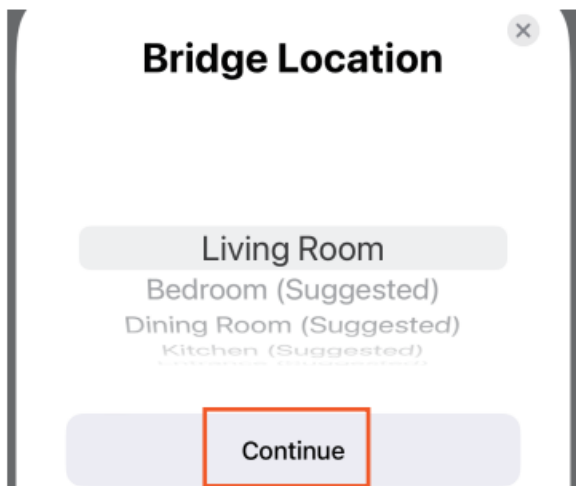
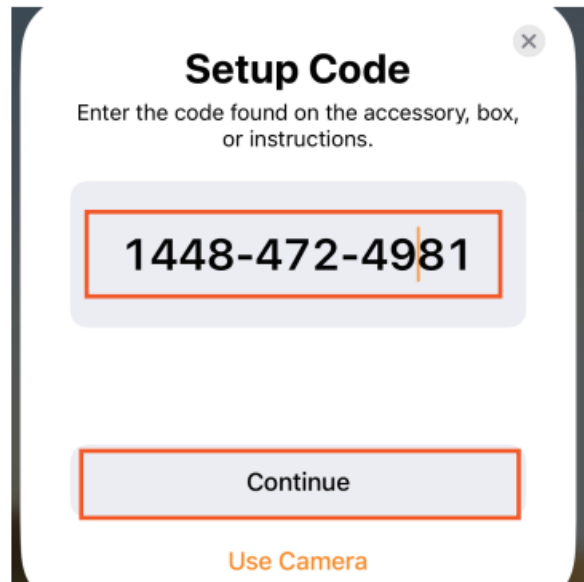
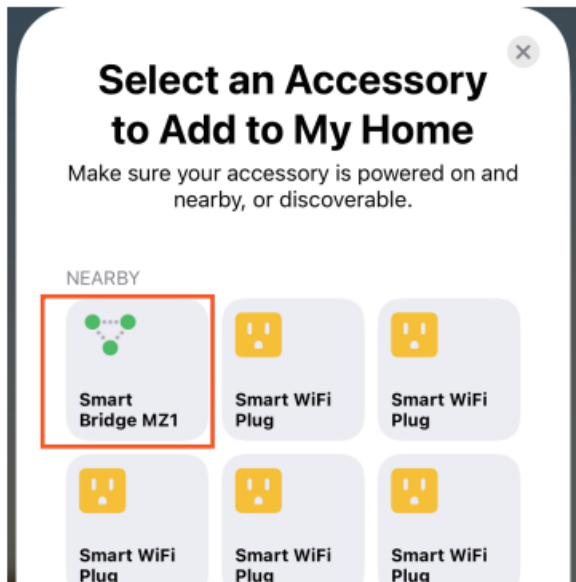
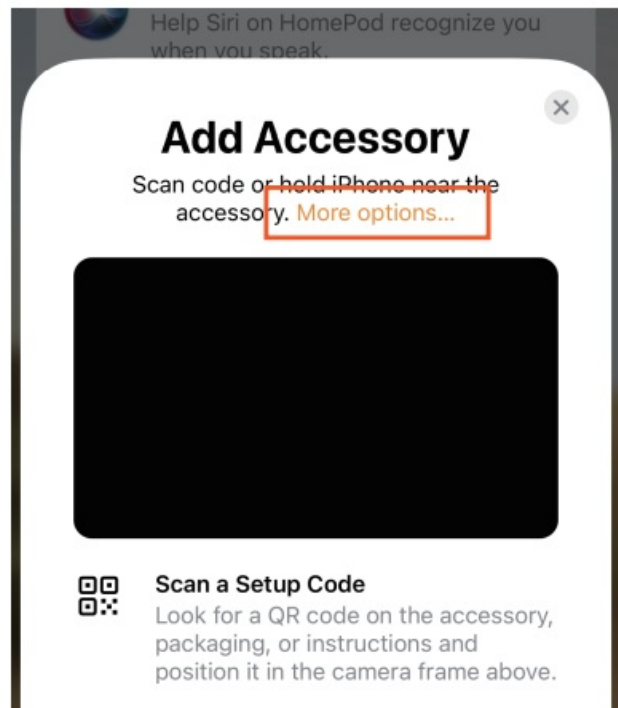
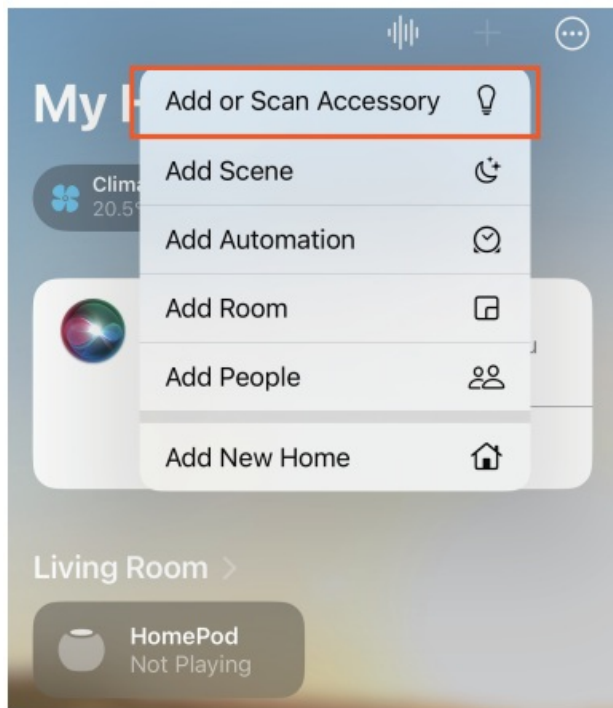


- **Compatibility:**
- **iOS system:** Version 16.6 or later.

Matter-supported Controller: Home Pod, Home Pod mini, or Apple TV. Note: It is highly recommended to download and install the 3R-Installer app on your phone first, follow the instructions below to setup the bridge in the 3R-Installer app, then get the setup code and add the bridge to your Apple Home through multi-admin. You can also Scan the QR code to add the bridge to your Apple Home directly.


1. Setup the Bridge with the 3R-Installer App, copy the setup code of the Matter bridge in the 3R-Installer App.
(Code effective Duration: 3 min, see Setup with 3R-Installer App)
Make sure your Apple Home Controller is connected to the same Wi-Fi network, and launch your Home App. Tap + and then tap Add or Scan Accessory to add a new device. Tap More Options, Select the Smart Bridge MZ1 to Add device, paste the Setup Code copied from 3R-Installer App to Continue, set the location and name for the bridge, the bridge will be added to My Home.
2. Pre-connected accessories attached to the Bridge through the 3R-Installer will be automatically updated. (To add more THIRDREALITY Zigbee devices to the bridge, press the reset button through the pin-hole with a pin to enable Zigbee pairing, the Zigbee indicator of the Matter bridge turns into blue blinking, put THIRDREALITY Zigbee devices into pairing mode to add devices.)
3. Set the location and name for the accessories, then create automation for the accessories.
4. To connect the device to another Matter certified ecosystem app, long press any attached accessories and tap Accessory Settings to enter the accessory page, tap Bridge to enter the Smart Bridge MZ1 device page, tap Turn On Pairing Mode to generate and copy a new setup code.
Launch the app of another Matter certified ecosystem, follow the setup instructions to paste the setup code,

and follow the app instructions to complete the setup.



×

Bridge Added to My Home




Continue

×

OnOff Light

This light is connected to Smart Bridge MZ1.



Continue

×

Light Location

Living Room

Bedroom (Suggested)

Dining Room (Suggested)

Kitchen (Suggested)

Continue

×

Light Name

Use the name provided or enter a custom name.

OnOff Light


×

Continue

×

Occupancy Sensor

This occupancy sensor is connected to Smart Bridge MZ1.



Continue

×

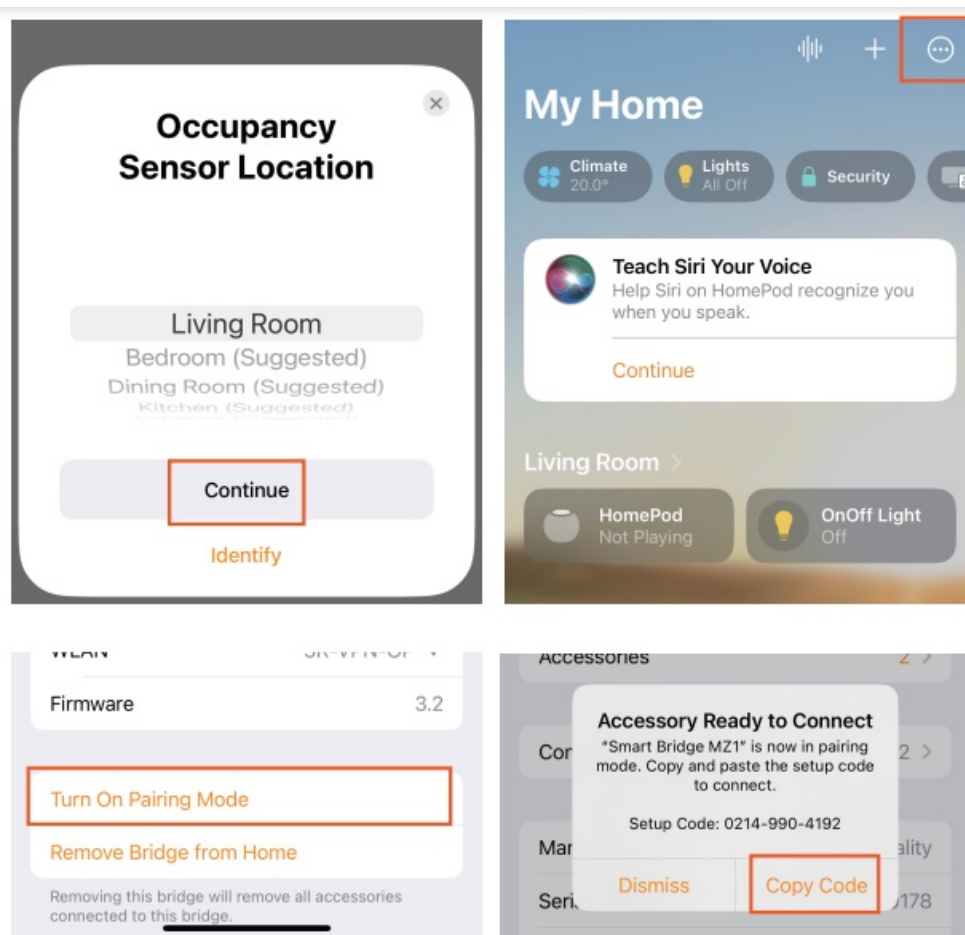
Occupancy Sensor Name

Use the name provided or enter a custom name.

Occupancy Sensor

×

Continue



Setup with Google Home



Compatibility Google Home App version:

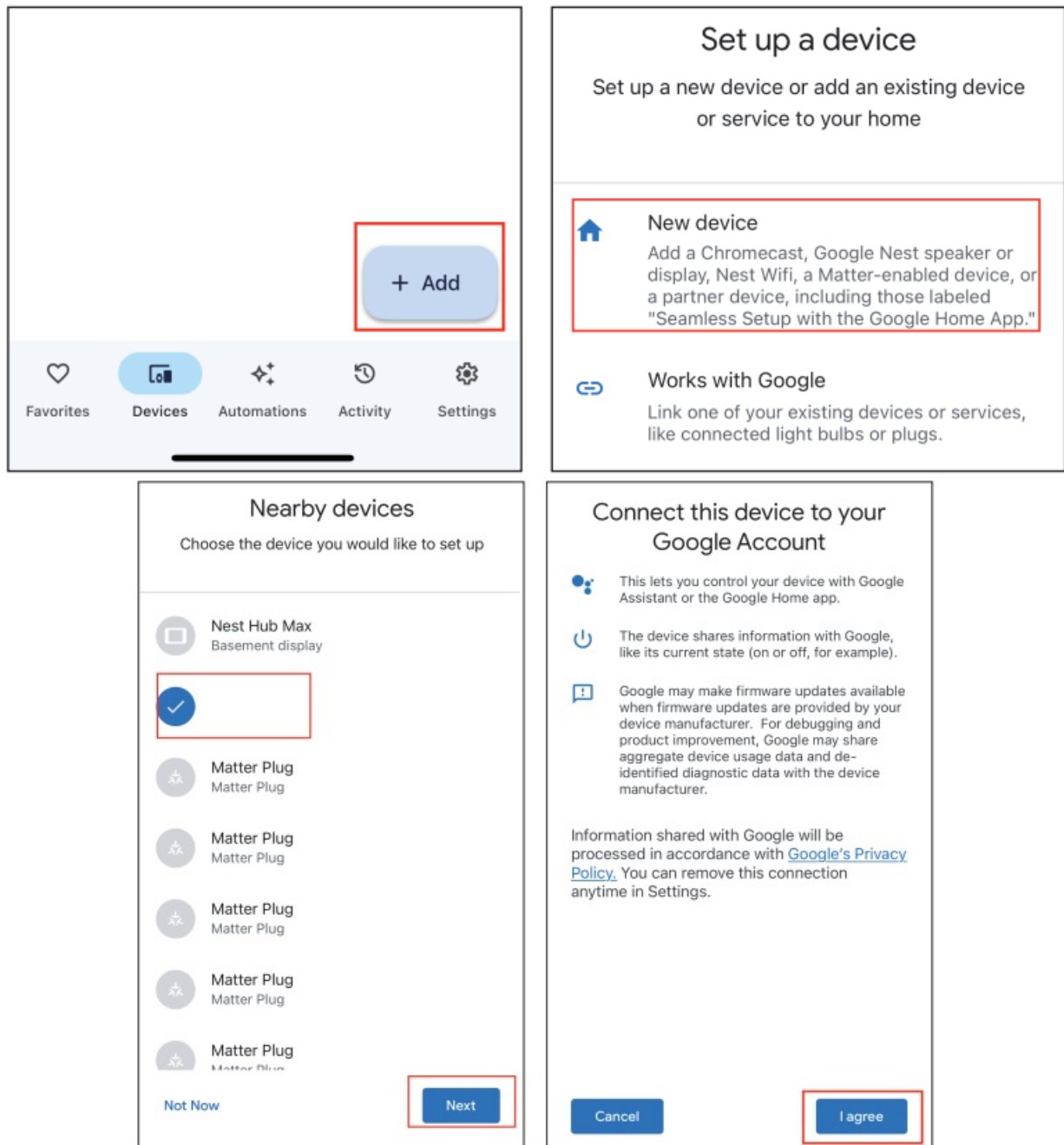
- **Android:** 3.3.1.4 or later
- **IOS:** 3.3.104 or later

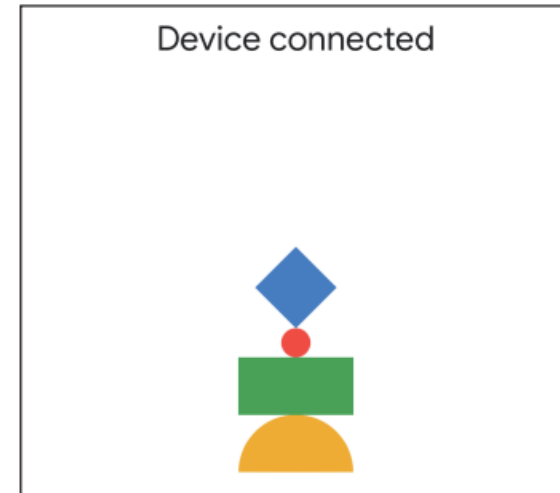
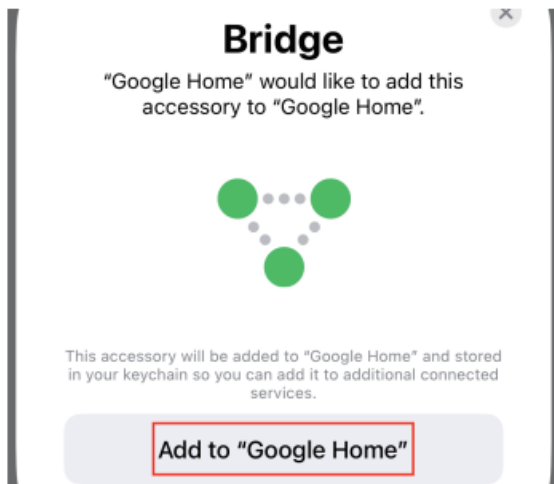
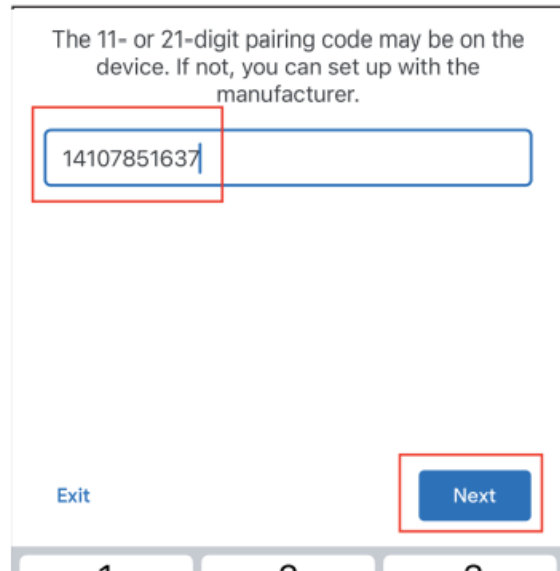
Note: It is highly recommended to download and install the 3R-Installer app on your phone first, follow the instructions below to setup the bridge in the 3R-Installer app, then get the setup code and add the bridge to your Google Home through multi-admin. You can also Scan the QR code to add the bridge to your Google Home directly.

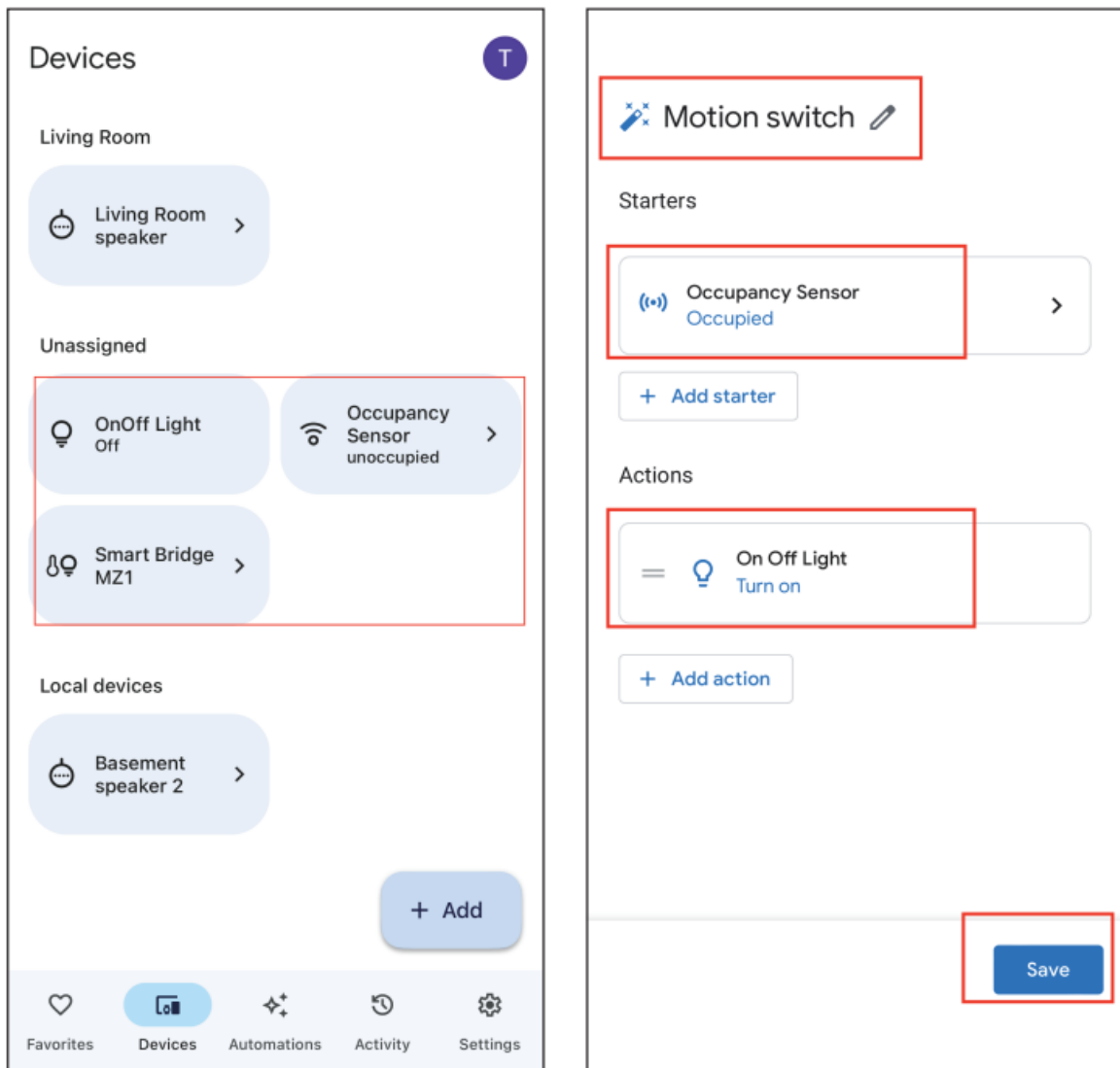
1. Setup the Bridge with the 3R-Installer App, copy the setup code of the Matter bridge in the 3R-Installer App. (Code effective Duration: 3 min, see Setup with 3R-Installer App)
2. Make sure your Google Home speaker is connected to the same Wi-Fi network, and launch your Google Home App. Tap + and then tap New device. Choose a home and tab Next, choose the Matter bridge then tab Next, Continue without scanning, paste the Setup Code to Continue, and create a name for the bridge, and the bridge will be added.
3. Pre-connected devices attached to the Matter Bridge will be auto-matically updated. (To add more THIRDDREALITY Zigbee devices to the bridge, press the reset button through the pinhole with a pin to enable Zigbee pairing, the Zigbee indicator of the Matter bridge turns into blue blinking, so put THIRDDREALITY Zigbee

devices into pairing mode to add devices.)

4. Create names and add the devices to Google Home, then create automation for the devices.







Setup with Alexa



Alexa App version:

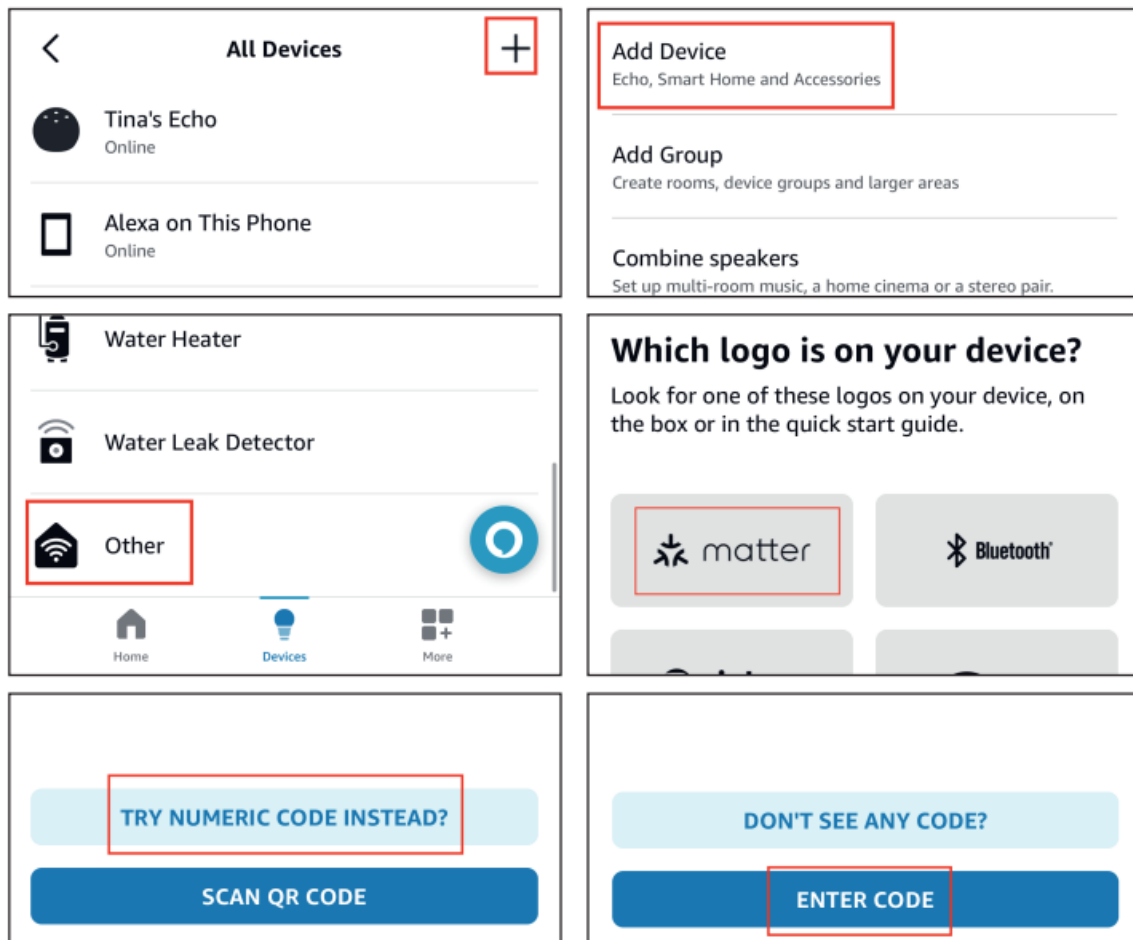
- **Android:** 2.2.521848.0 or later for the build version, and 2023.15 or later for the APP version
- **IOS:** 2.2.548660 or later for build version, and 2023.15 or later for APP version

Note: It is highly recommended to download and install the 3R-Installer app on your phone first, follow the instructions below to set up the bridge in the 3R-Installer app, then get the setup code and add the bridge to your Alexa through multi-admin. You can also Scan the QR code to add the bridge to your Alexa directly.

1. Setup the Bridge with the 3R-Installer App, copy the setup code of the Matter bridge in the 3R-Installer App.
(Code effective Duration: 3 min, see Setup with 3R-Installer App)
2. Make sure your Alexa speaker is connected to the same Wi-Fi network, launch your Amazon Alexa App, tab + in the upright on the device page to Add Device, scroll down the list and tab Other, choose Matter, try NUMERIC CODE INSTEAD to ENTER CODE, and follow the instructions to add the bridge and pre-connected

devices.

3. Create routines with the devices.
4. To connect the device to another Matter certified ecosystem app, go to the app of the first ecosystem to generate a new setup code. Go to the Device Settings page, tap Other Assistants and Apps, and Add another, then copy the setup code. Launch the app of another Matter certified ecosystem, follow the setup instructions to enter the setup code, and follow the app instructions to complete the setup.



Enter numeric code

You can find it inside the device's box, in the quick-start guide or on the device.

Numeric code

14820824517

Please enter 11- or 21-digit code

SCAN QR CODE?

NEXT

TIME SENSITIVE

Accessory Added to Amazon Alexa

Your Smart Bridge MZ1 Bridge has been added to your home.

now

Alexa is getting your device ready

This may take up to a minute

ThirdReality Hub and 2 devices found and connected

These devices have been added to your Alexa account. Next, continue setting up each of these devices one at a time.

Next

<

All Devices

+

First device

New Device

Occupancy Sensor

New Device

OnOff Light

New Device

Tina's Echo

Online

Alexa on This Phone

Online

Home

Devices

More

<

OnOff Light

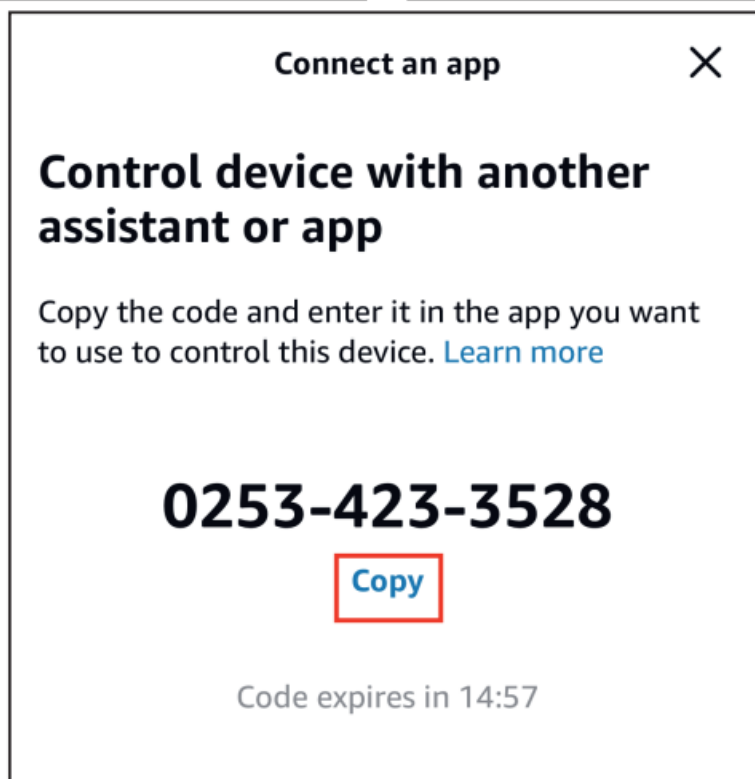
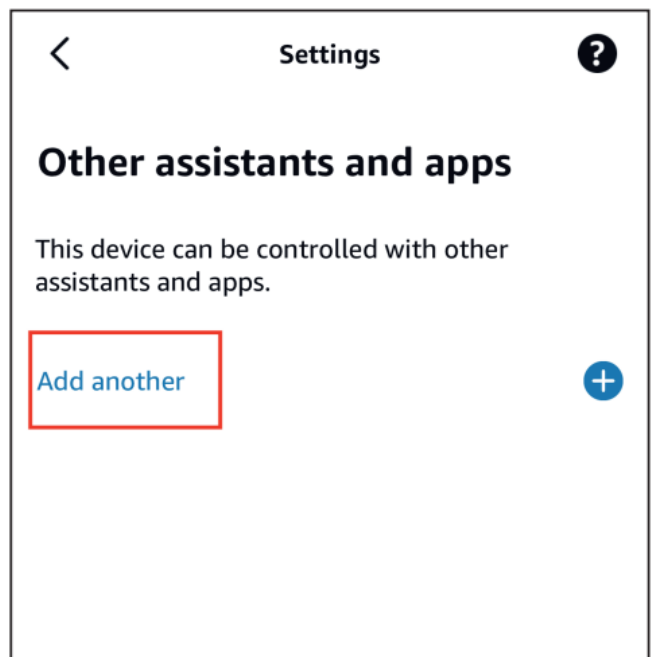
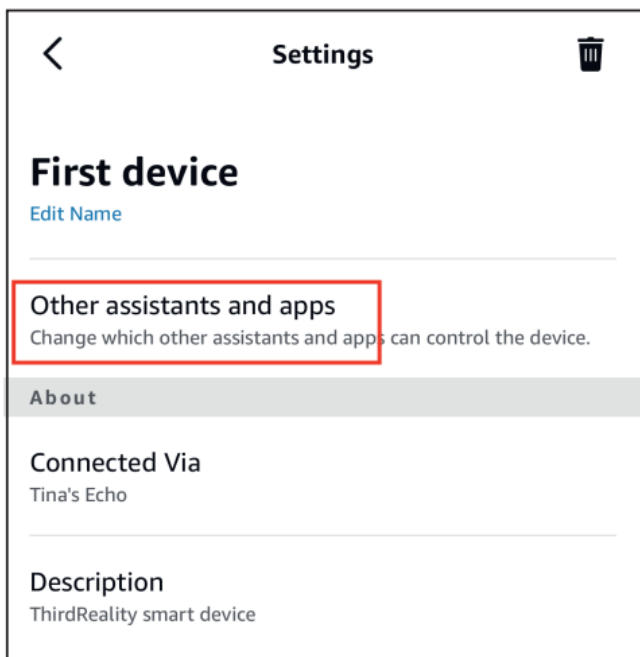
Power is Off

Create a Routine

Home

Devices

More



Setup with SmartThings



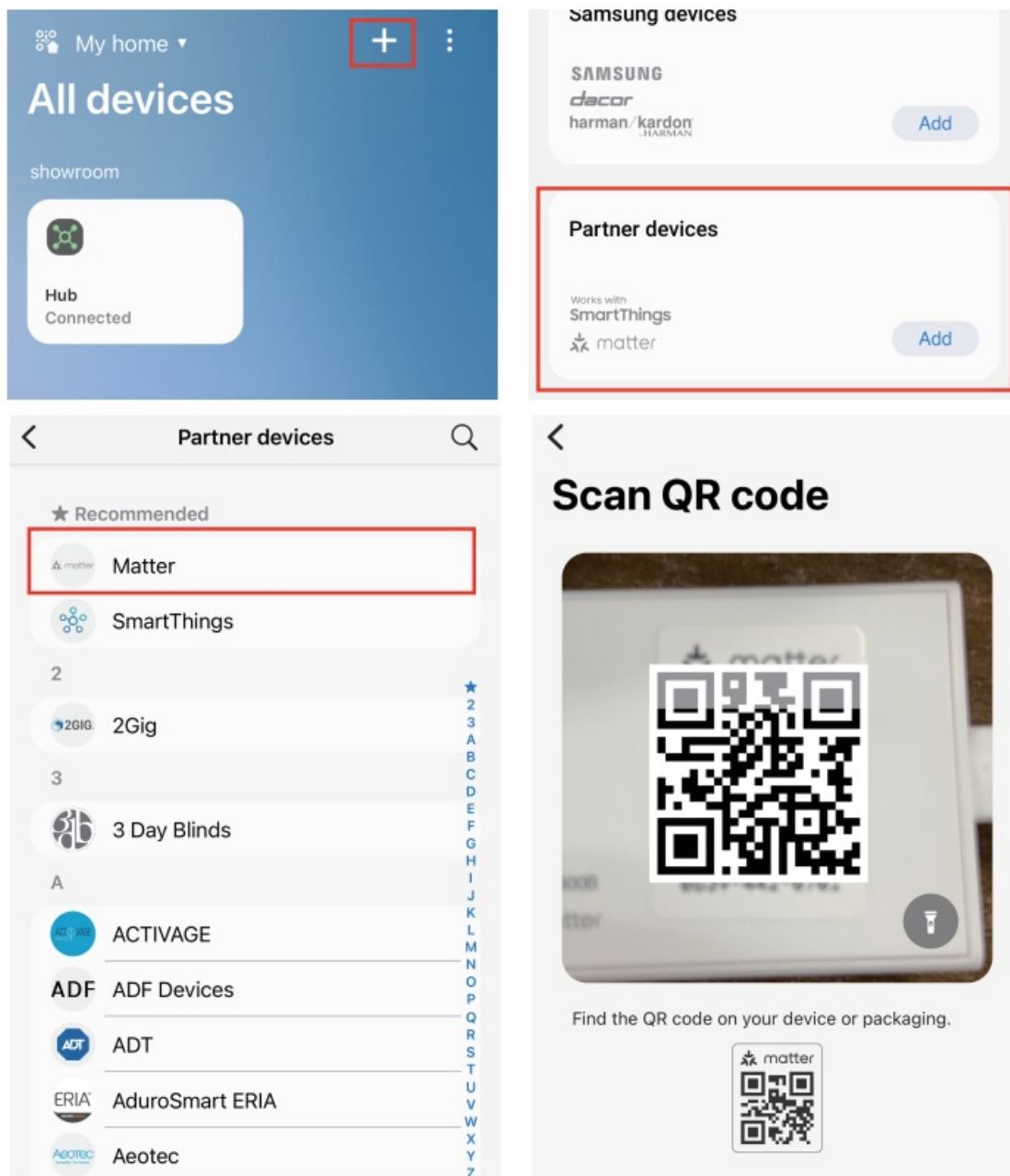
Compatibility:

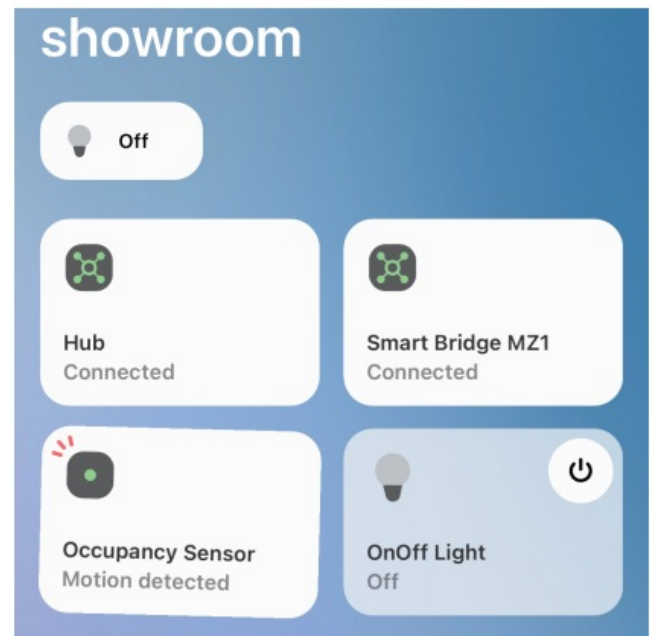
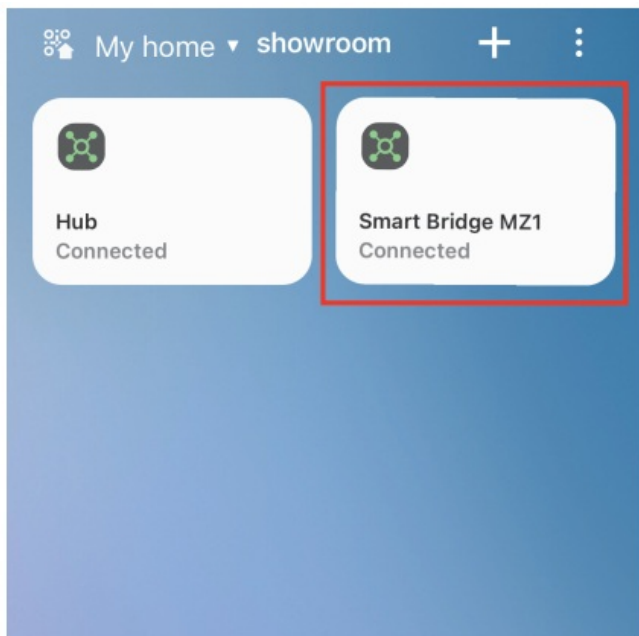
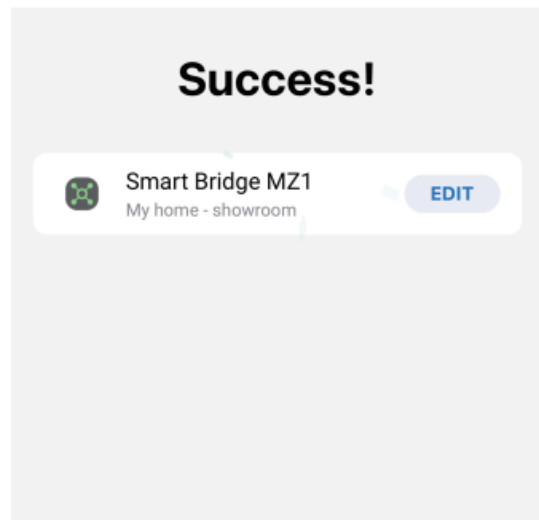
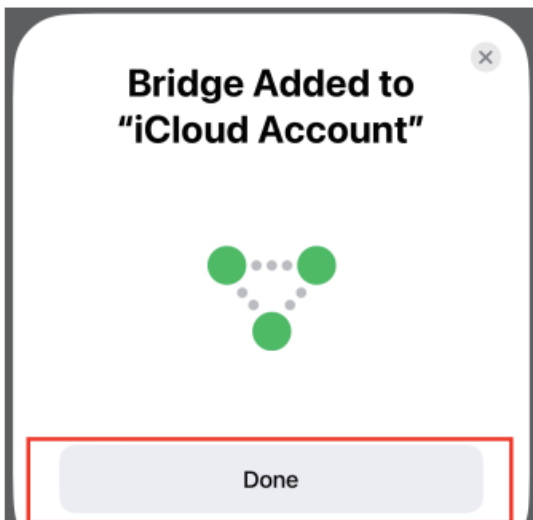
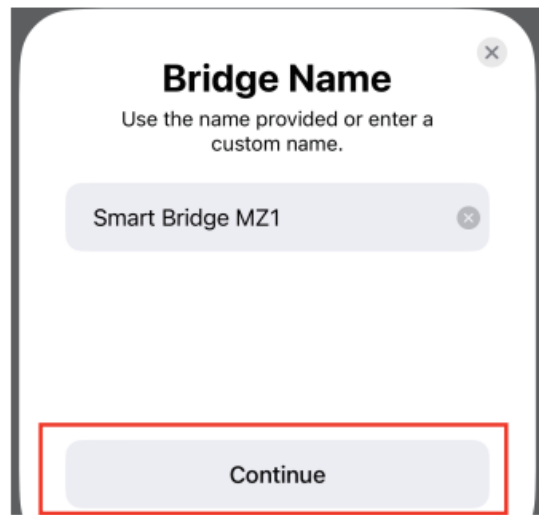
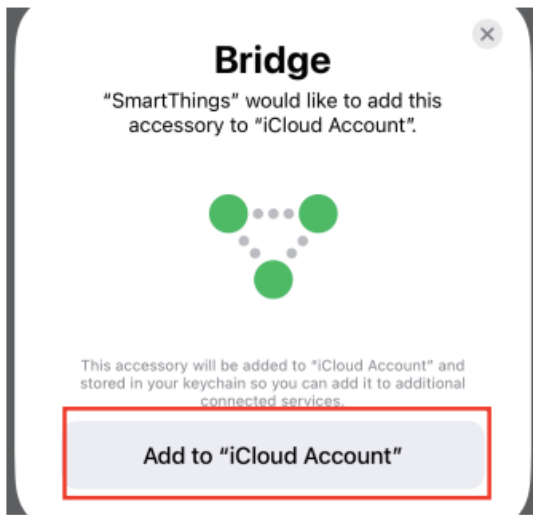
SmartThings App version 1.8.01.22 or higher. iOS SmartThings App version 1.7.02.16 Matter-supported Controller: SmartThings Hub V2& V3, Aeotec Smart Home Hub

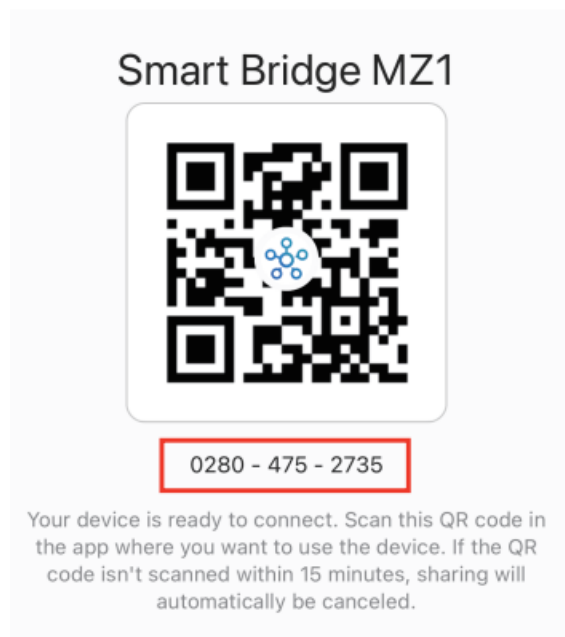
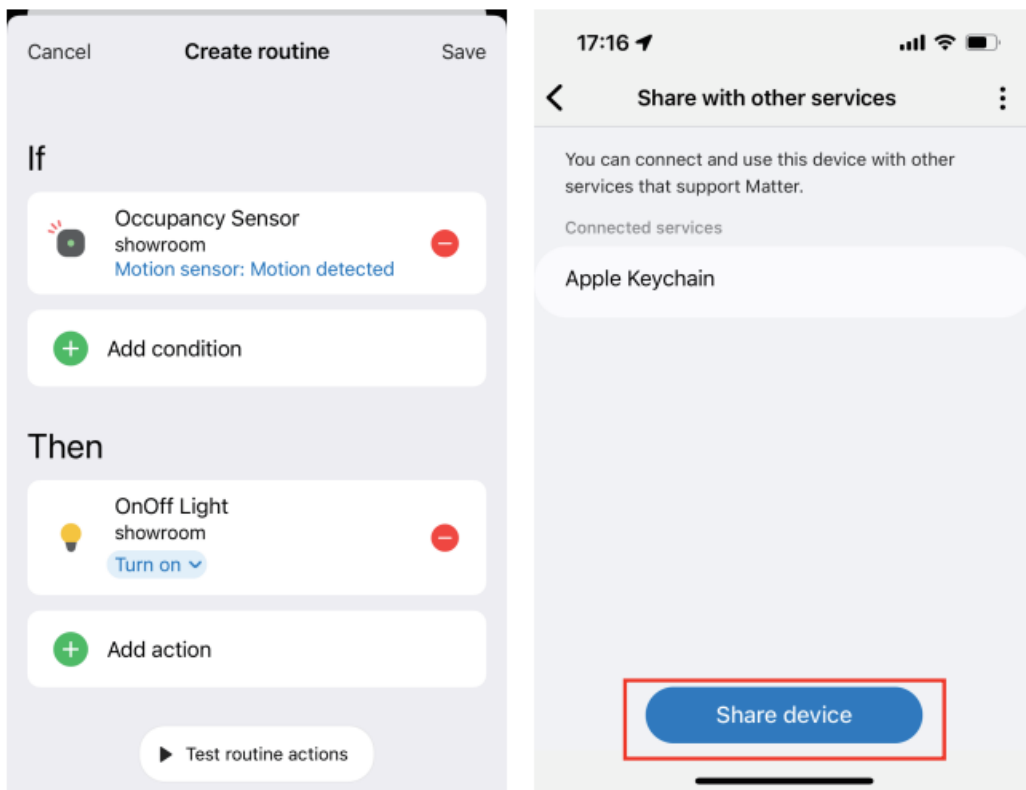
1. Launch your SmartThings App. Tap + to Add device., Choose Matter.
2. Scan the QR code on your device.
3. Select a hub to connect your device. (You need to Add to “iCloud Account” in IOS, then create an Accessory

Name, then Continue)

4. Set a name to add the device.
5. Press the reset button through the pinhole with a pin to enable Zigbee pairing, the Zigbee indicator of the Matter bridge turns into blue blinking, putting THIRDREALITY Zigbee devices into pairing mode to add devices.
6. Create a routine with the Zigbee devices added through the Matter bridge.
7. To connect the device to another Matter certified ecosystem app, go to the app of the first ecosystem to generate a new setup code. Go to the Device Settings page, tab Share with other services then Share device, there will be a QR code and a numeric code. Launch the app of another Matter certified ecosystem, follow the setup instructions to enter the setup code, and follow the app instructions to complete the setup.







FCC regulatory conformance

This device complies with part 15 of the FCC rules. Operation is subject to the following two conditions: (1) this device may not cause harmful interference, and (2) this device must accept any interference received, including interference that may cause undesired operation. Changes or modifications not expressly approved by the party responsible for compliance could void the user's authority to operate the equipment.

NOTE: This equipment has been tested and found to comply with the limits for a Class B digital device, under part 15 of the FCC Rules. These limits are designed to provide reasonable protection against harmful interference in a residential installation. This equipment generates uses and can radiate radio frequency energy and, if not installed and used by the instructions, may cause harmful interference to radio communications. However, there is no guarantee that interference will not occur in a particular installation. If this equipment does cause harmful interference to radio or television reception, which can be determined by turning the equipment off and on, the user is encouraged to try to correct the interference by one or more of the following measures:

- Reorient or relocate the receiving antenna.
- Increase the separation between the equipment and the receiver.
- Connect the equipment to an outlet on a circuit different from that to which the receiver is connected.
- Consult the dealer or an experienced radio/TV technician for help with important announcements.

NOTE: The manufacturer is not responsible for any radio or TV interference caused by unauthorized modifications to this equipment. Such modifications could void the user's authority to operate the equipment.

ISED Statement

This device complies with Industry Canada license-exempt RSS standard(s). Operation is subject to the following two conditions: (1) This device may not cause interference, and (2) This device must accept any interference, including interference that may cause undesired operation of the device. The digital apparatus complies with Canadian CAN ICES-3 (B)/NMB-3(B).

RF Exposure

This equipment complies with FCC radiation exposure limits set forth for an uncontrolled environment. This transmitter must not be co-located or operating in conjunction with any other antenna or transmitter.

Limited Warranty

For a limited warranty, please visit www.3reality.com/devicesupport For customer support, please contact us at info@3reality.com or visit www.3reality.com For help and troubleshooting related to Amazon Alexa, visit the Alexa app.

Documents / Resources

 <p>Smart Bridge MZ1</p> <p><small>matter 3 REALITY</small></p>	<p>THIRD REALITY MZ1 Smart Bridge [pdf] Installation Guide MZ1 Smart Bridge, MZ1, Smart Bridge, Bridge</p>
--	---

References

- [User Manual](#)

Manuals+, Privacy Policy

This website is an independent publication and is neither affiliated with nor endorsed by any of the trademark owners. The "Bluetooth®" word mark and logos are registered trademarks owned by Bluetooth SIG, Inc. The "Wi-Fi®" word mark and logos are registered trademarks owned by the Wi-Fi Alliance. Any use of these marks on this website does not imply any affiliation with or endorsement.