



## U3000 Desktop Thinkware Dash Cam User Guide

[Home](#) » [THINKWARE](#) » U3000 Desktop Thinkware Dash Cam User Guide 

### U3000 Desktop Thinkware Dash Cam User Guide



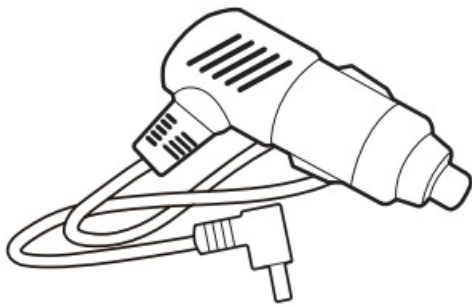
## Contents

- [1 Power the Dash Cam](#)
- [2 Download the App](#)
- [3 Connect to the App](#)
- [4 Install the Front Camera](#)
- [5 Install the Rear View Camera](#)
- [6 Dash Cam Settings in the App](#)
- [7 THINKWARE CONNECTED App](#)
- [8 FAQ & Help Desk](#)
- [9 Documents / Resources](#)
  - [9.1 References](#)
- [10 Related Posts](#)

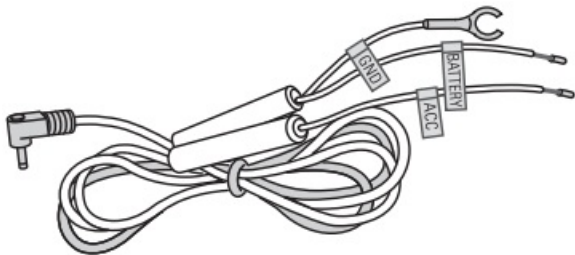
## Power the Dash Cam

### Use following one of the options

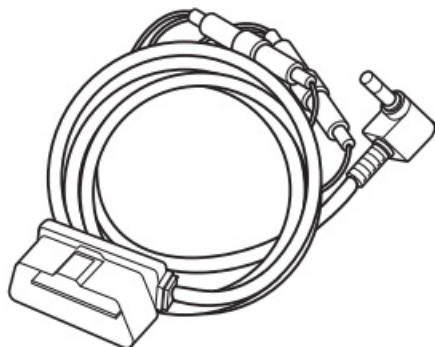
The included cable options vary depending on the dash cam model purchased.



12V Power Cable



Hardwiring Cable\*



OBD-II Cable\*



\*To enable Parking Surveillance mode, the dash cam needs to be powered by either the OBD-II Cable or Hardwiring Cable (professional installation recommended).

## Download the App

### **Download the THINKWARE DASHCAM LINK App**

On your smartphone, open the Google Play Store or Apple App Store and download and install THINKWARE DASH CAM LINK.



THINKWARE DASH CAM LINK



Apple Store (iOS)



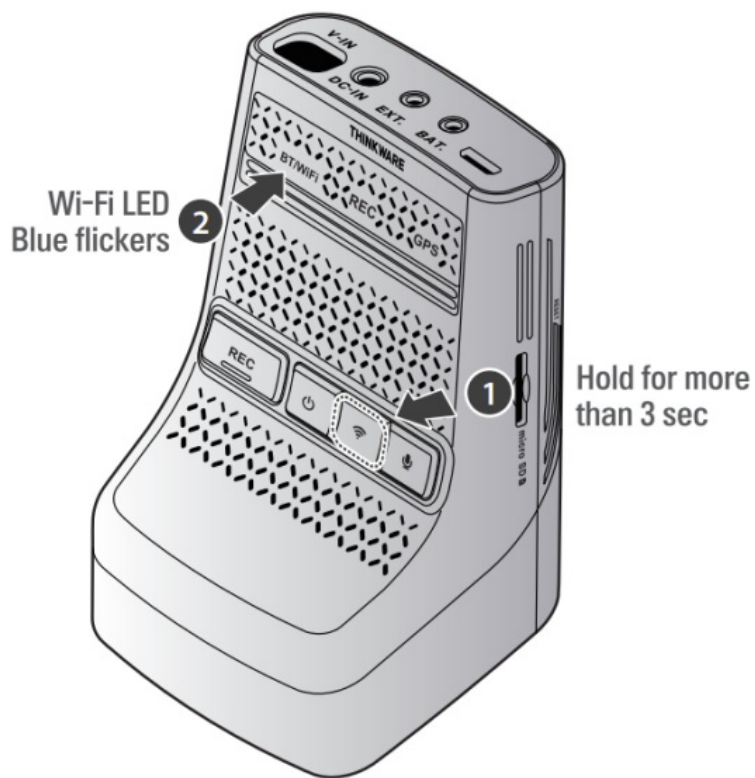
Google Play Store (Android)

## Connect to the App

### **Connect the product to a smartphone**

Tap Dash cam connection is required. At the bottom of the screen and follow the on-screen instructions to connect the product to a smartphone.

1. Press the Wi-Fi  button on the Dash Cam for at least 3 seconds.

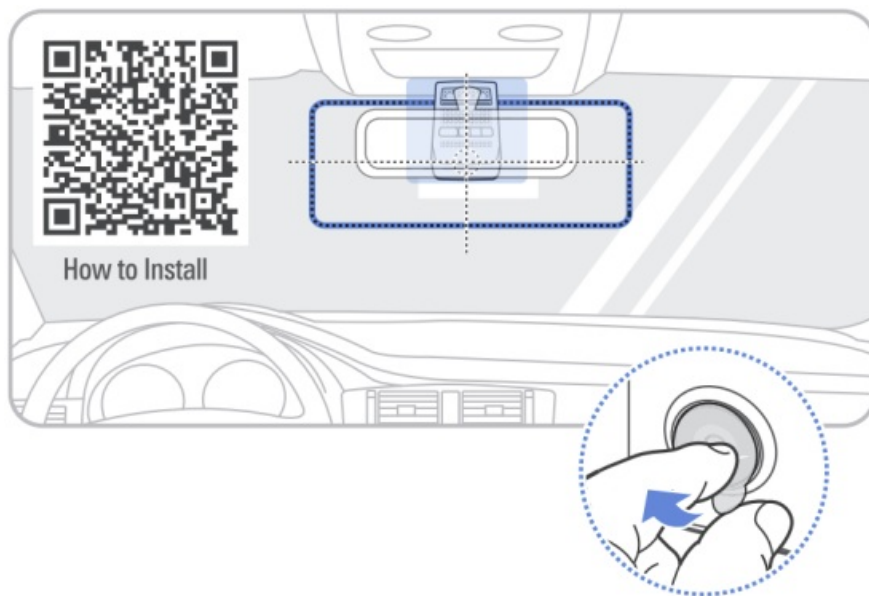


Won't connect to the App?



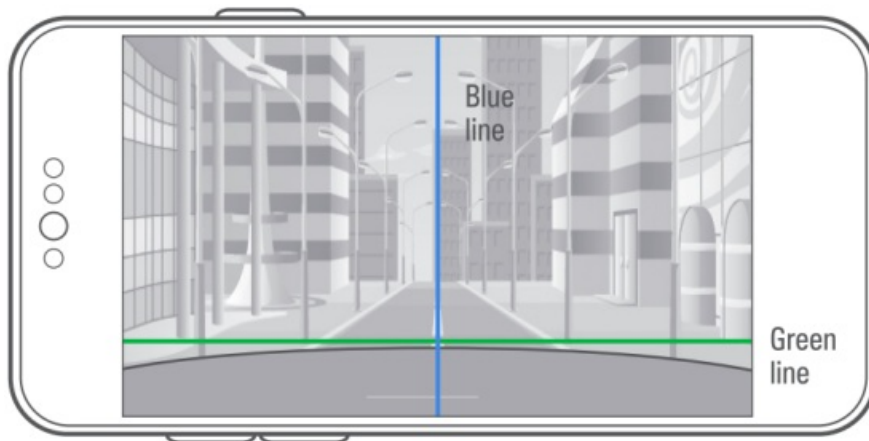
Install the Front Camera



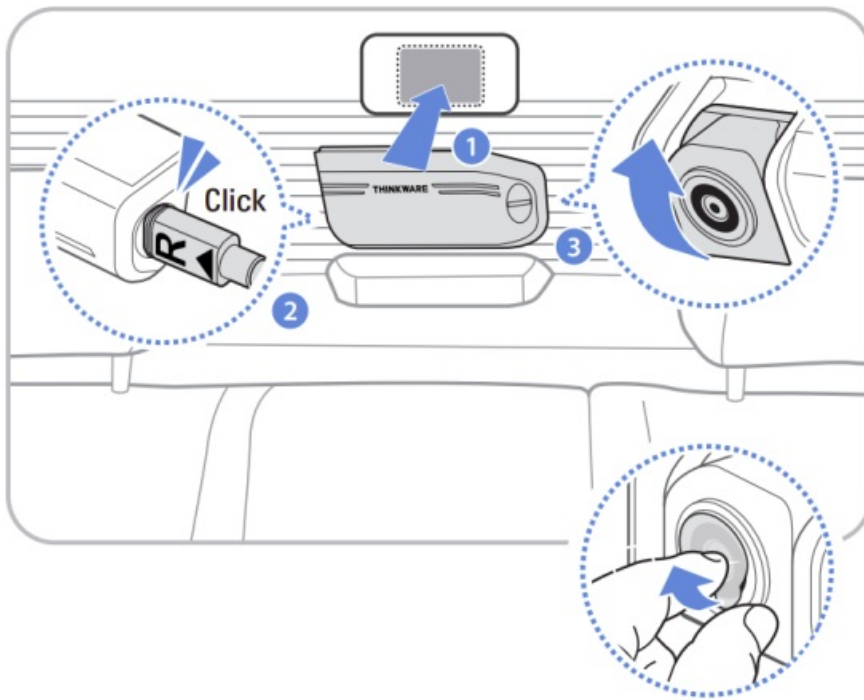


### **Open Live View in the app**

- Blue line with the center
- Green line with the front edge of the hood

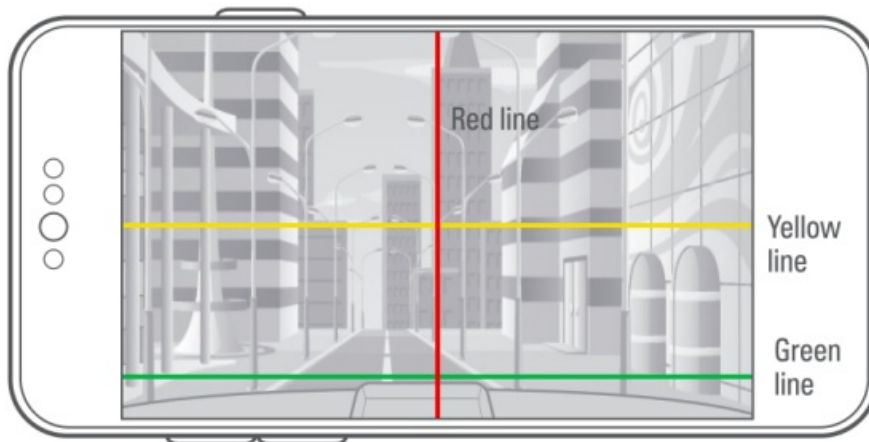


### **Install the Rear View Camera**



### **Open Live View Rear Camera in App**

- Red line with the trunk center
- Yellow line with the center of the horizon
- Green line with the trunk line



### **Dash Cam Settings in the App**

#### **Default settings out of the box**

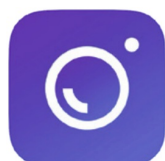
The default settings are as follows, and you have the option to adjust them according to your preference.

Options	Description
Voice Recording	Enabled
System Volume	0123
Parking Mot	RADAR
Smart Parking Mode	Thermal Protection – Enabled
	External Battery Saving – Enabled
Battery Protection	Enabled Vehicle Type : Regular
Super Night Vision	Parking Mode
ADAS	Disabled
Speed Stamp	Disabled
Safety Camera	Enabled
Use External Battery	Disabled

## THINKWARE CONNECTED App

### **Download the THINKWARE CONNECTED App**

On your smartphone, open the Google Play Store or Apple App Store and download and install **THINKWARE CONNECTED**



THINKWARE CONNECTED



How to Register Your Dash Cam



Apple Store (iOS)



Google Play Store (Android)

## FAQ & Help Desk

### Still have questions or issues?

For further assistance or to report any issues, please contact our support team.

- **North America**

1 [844-865-9273](tel:844-865-9273)

[support@thinkware.com](mailto:support@thinkware.com)

- **United Kingdom**

44 (0) 333-121-0008

[support.eu@thinkware.com](mailto:support.eu@thinkware.com)

- **European Union**

(+49) 69-943-22200

[support@thinkware.com](mailto:support@thinkware.com)






FAQs & Help Desk

Please refer to **CS** Information **QR** in the box for other countries.

**Documents / Resources**

	<p><b><a href="#">THINKWARE U3000 Desktop Thinkware Dash Cam</a></b> [pdf] User Guide U3000 Desktop Thinkware Dash Cam, U3000, Desktop Thinkware Dash Cam, Thinkware Dash Cam, Dash Cam</p>
---	---

**References**

- [User Manual](#)

[Manuals+](#), [Privacy Policy](#)

This website is an independent publication and is neither affiliated with nor endorsed by any of the trademark owners. The "Bluetooth®" word mark and logos are registered trademarks owned by Bluetooth SIG, Inc. The "Wi-Fi®" word mark and logos are registered trademarks owned by the Wi-Fi Alliance. Any use of these marks on this website does not imply any affiliation with or endorsement.