

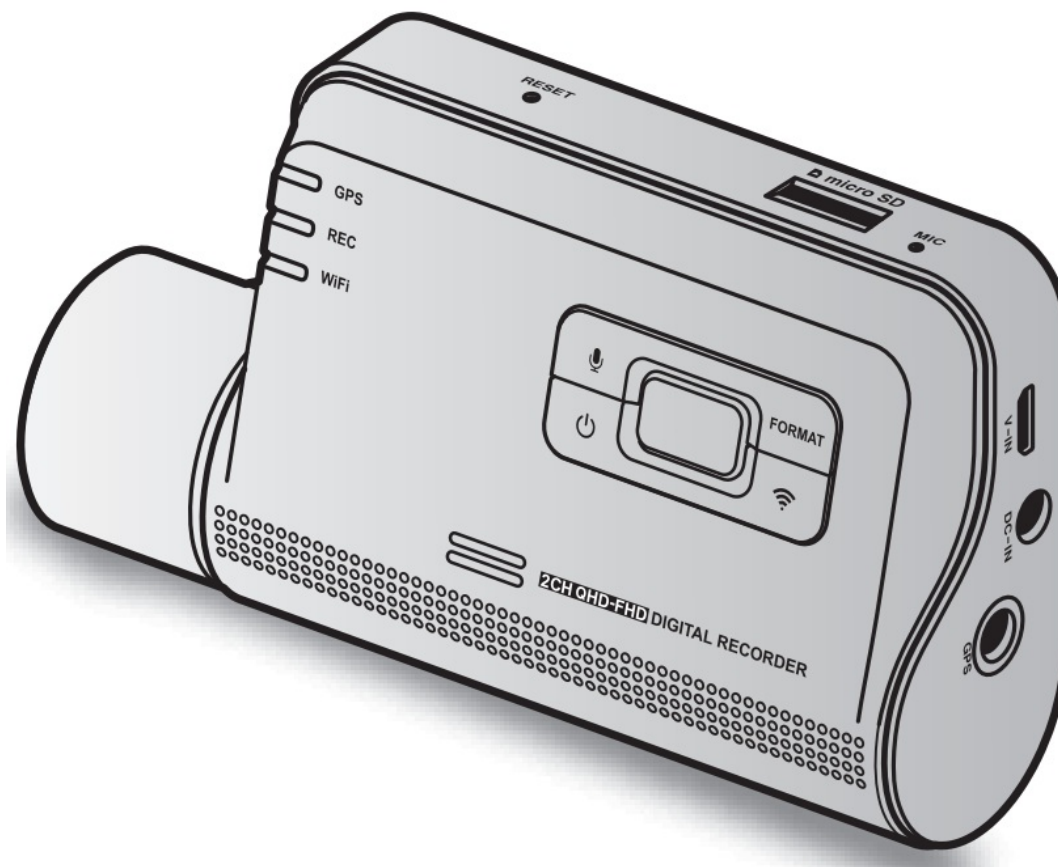


THINKWARE Q800 Pro WiFi Dash Cam User Guide

[Home](#) » [THINKWARE](#) » THINKWARE Q800 Pro WiFi Dash Cam User Guide 

THINKWARE™ DASH CAM

Q800 PRO
Quick Start Guide & Warranty



Contents

- 1 Quick Start Guide & Warranty
- 2 Safety information
- 3 Driving and product operation
- 4 FCC Statement
- 5 Included items
- 6 Inserting the memory card
- 7 Part names
- 8 Installing the product
- 9 Connecting and arranging the power cable
- 10 Using the continuous recording features
- 11 Upgrading the firmware
- 12 Using the mobile viewer
- 13 Warranty
- 14 LIMITED WARRANTY AND DISCLAIMERS
- 15 Documents / Resources
 - 15.1 References
- 16 Related Posts

Quick Start Guide & Warranty

This Dashboard Camera (dashcam) is a specialized onboard device that continuously records while the vehicle is in use.

This manual contains the basic steps required for F70 installation.

For detailed information, please refer to the user guide in the memory card included in the product package.

Before using the product

This product records videos while the vehicle is operating. Use this product only for reference when investigating

incidents or road accidents. This product is not guaranteed to record ALL events. The device may not properly record accidents with small impacts that are too minor to activate the impact sensor or accidents with massive impacts that cause the vehicle's battery voltage to deviate.

Video recording does not begin until the product is completely turned on (booted up). To ensure that all vehicle events are recorded, wait until the product is completely booted up after turning it on, and then begin operating the vehicle.

THINKWARE is not responsible for any loss caused by an accident, nor is it responsible for providing any support regarding the outcome of an accident.

Depending on the vehicle's configuration or operating conditions, such as the installation of remote door lock devices, ECU settings, or TPMS settings, some product features may not be supported, and different firmware versions may influence the product's performance or features.

Safety information

Read the following safety information to properly use the product.

Safety symbols in this guide



“Warning” – Indicates a potential hazard that, if not avoided, may result in injury or death.



“Caution” – Indicates a potential hazard that, if not avoided, may result in minor injury or property damage.



“Note” – Provides useful information to help users better utilize the product's features.

Safety information for proper use

Driving and product operation



- Do not operate the product while driving a vehicle.
- Install the product in places where the driver's view is not obstructed. Check with your state and municipal laws before mounting the product to the windshield.

Power supply



- Do not operate or handle the power cable with wet hands.
- Do not use damaged power cables.
- Keep the power cable away from all heat sources.
- Use the power cable with the correct connector and make sure the power cable is connected securely and is firmly in place.
- Do not modify or cut the power cable. Also, do not place heavy objects on the power cable or pull, insert, or bend the power cable using excessive force.
- Use only genuine accessories from THINKWARE or an authorized

THINKWARE dealer. THINKWARE does not guarantee compatibility and the normal operation of third-party accessories.

- When connecting the power cable to the product, ensure that the connection between the cable plug and the power cable connector on the product is secure.

Video recording is not available if the power connector is disconnected.

Children and pets



Ensure that the product is out of the reach of children and pets. If the product breaks, it may result in fatal damage.

Other information about the product Product management and operation



- Do not expose the product to direct sunlight or intense light. The lens or internal circuitry may fail otherwise.
- Use the product at a temperature between 14°F and 140°F (-10°C to 60°C) and store the product at a temperature between -4°F and 158°F (-20°C to 70°C). The product may not function as designed and some permanent physical damages may result if it is operated or stored out of the specified temperature ranges. Such damages are not covered by the warranty.
- Frequently check the product for the proper installation position. The impact caused by extreme road conditions may alter the installation position. Ensure that the product is positioned as instructed in this guide.
- Do not apply excessive force when pressing the buttons. Doing so may damage the buttons.
- Do not use chemical cleaners or solvents to clean the product. Clean the product using a clean, soft, and dry fabric.
- Do not disassemble the product or subject the product to impact.
Unauthorized disassembly of the product voids the product warranty.
- Handle with care. If you drop, mishandle, or expose the product to external shocks, it may cause damage and/or result in the malfunction of the product.
- Avoid excessive humidity and do not allow any water to enter the product.



- **Depending on the make and model of your car, the power may be constantly supplied to the dash cam even when the ignition is turned off. Installation of the device to a continuously powered 12V outlet could result in vehicle battery drainage.**
- This device is designed to record video while the vehicle is in operation. The quality of the video might be affected by weather conditions and the road environment, such as whether it is day or night, the presence of street lighting, entering/exiting tunnels, and the surrounding temperature.
- Although designed to withstand high-impact car collisions, THINKWARE does NOT guarantee the recording of accidents when the device is damaged as a result of the accident.
- Keep the windshield and camera lens clean for optimal video quality. Particles and substances on the camera lens or windshield may reduce the quality of the recorded videos.
- This device is intended to be used inside the vehicle only.

FCC Statement

This device complies with Part 15 of the FCC Rules. Operation is subject to the following two conditions: (1) This device may not cause harmful interference, and (2) this device must accept any interference received, including interference that may cause undesired operation.

This equipment has been tested and found to comply with the limits for a Class A digital device, pursuant to Part 15 of the FCC Rules. These limits are designed to provide reasonable protection against harmful interference in a residential installation. This equipment generates, uses, and can radiate radio frequency energy and, if not installed and used in accordance with the instructions, may cause harmful interference to radio communications. However, there is no guarantee that interference will not occur in a particular installation. If this equipment does cause harmful interference to radio or television reception, which can be determined by turning the equipment off and on, the user is encouraged to try to correct the interference by one or more of the following measures:

- Reorient or relocate the receiving antenna.
- Increase the separation between the equipment and receiver.
- Connect the equipment to an outlet on a circuit different from that to which the receiver is connected.
- Consult the dealer or an experienced radio/TV technician for help.
- This appliance and its antenna must not be co-located or operated in conjunction with any other antenna or transmitter.
- A minimum separation distance of 20cm must be maintained between the antenna and the person for this appliance to satisfy the RF exposure requirements.

FCC CAUTION:

Any changes or modifications to the equipment not expressly approved by the party responsible for compliance could void your authority to operate the equipment.

This Class A digital apparatus complies with Canadian ICES-003.

FCC ID: 2ADTG-Q800 PRO

IC: 12594A-Q800 PRO

Included items

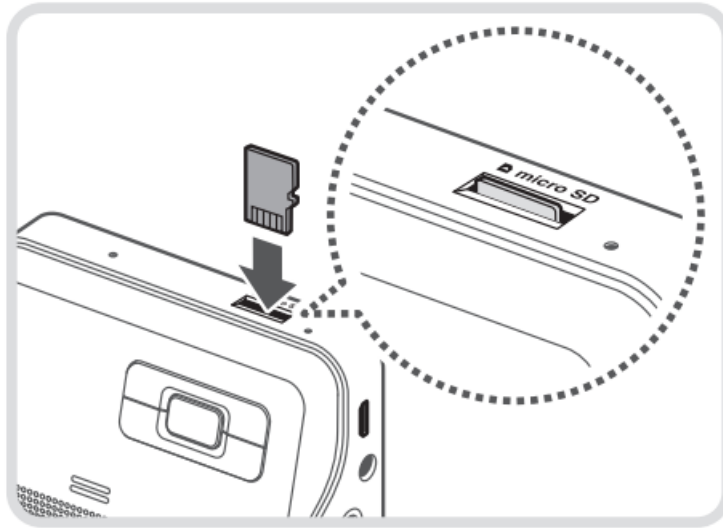
Ensure that all the items are included when you open the product box.

- Front camera (main unit)
- Mount
- Car charger
- Adhesive cable holder
- MicroSD memory card with adapter (consumable)
- Quick start guide & Warranty /CS information / User guide (stored in the MicroSD card)



Accessories

- Hardwiring cable
- Rear camera
- External GPS receiver

Inserting the memory card

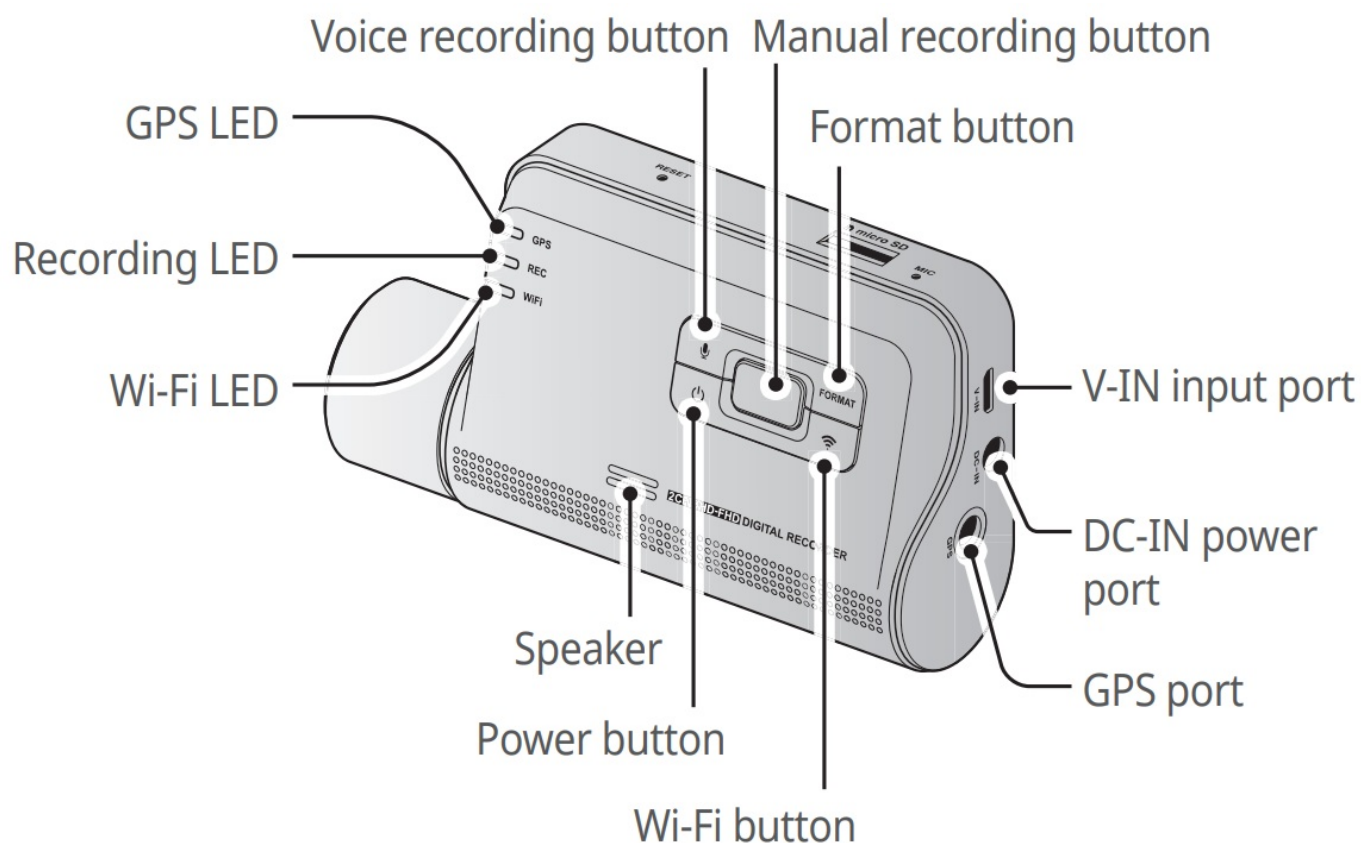


Insert the memory card into the memory card slot, paying attention to the direction of the memory card, and then push the memory card into the slot until you hear a click.
Before inserting the memory card, ensure that the metal contacts on the memory card are facing toward the lens of the product.

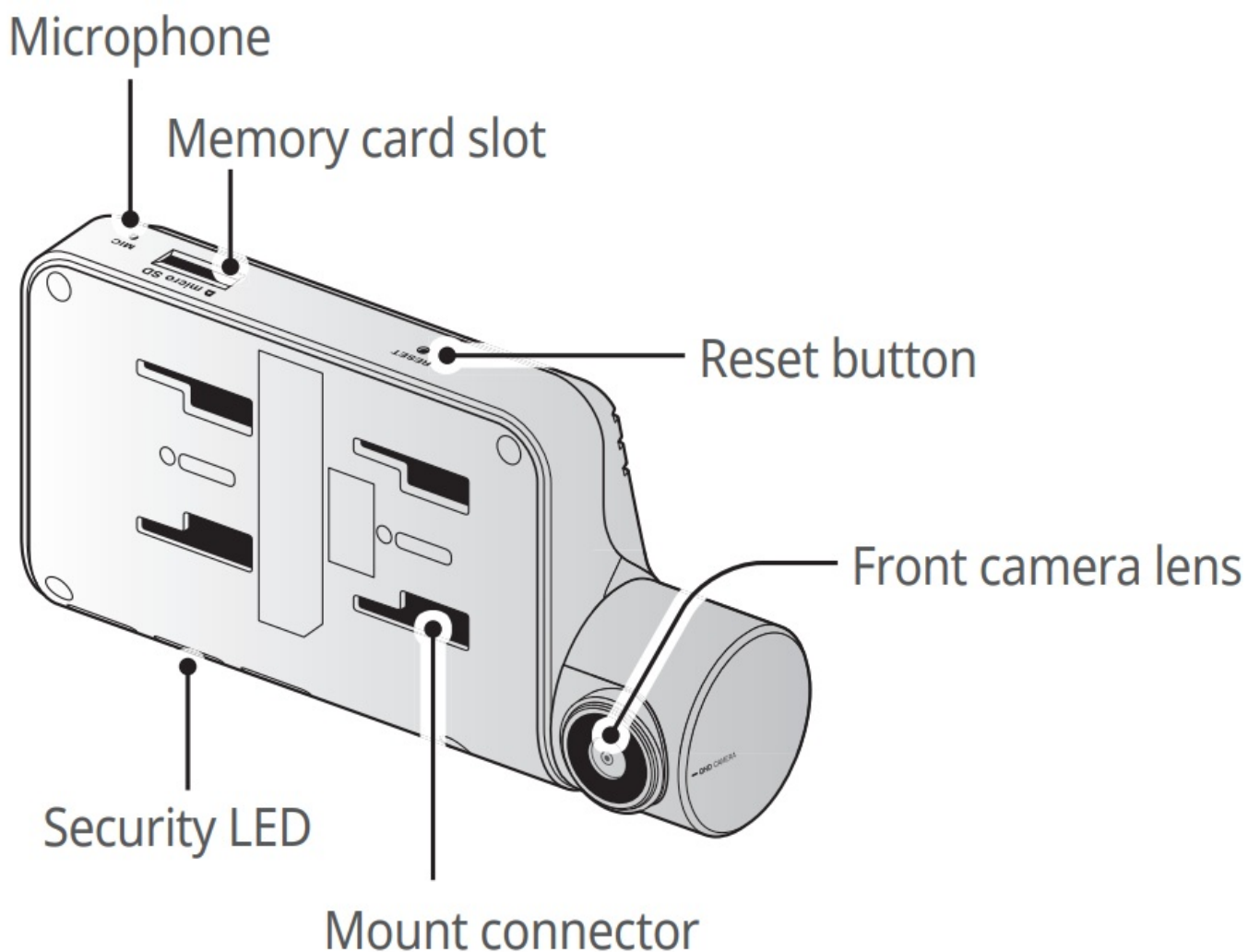
-  Ensure that the product is turned off before removing the memory card. The recorded video files may be corrupted or lost if you remove the memory card while the product is on.
- Ensure that the memory card is in the correct direction before inserting it into the product. The memory card slot or the memory card may be damaged if it is inserted incorrectly.
- Use only authentic memory cards from THINKWARE. THINKWARE does not guarantee compatibility and the normal operation of third-party memory cards.
-  To prevent loss of recorded video files, periodically back up the video files on a separate storage device.

Part names

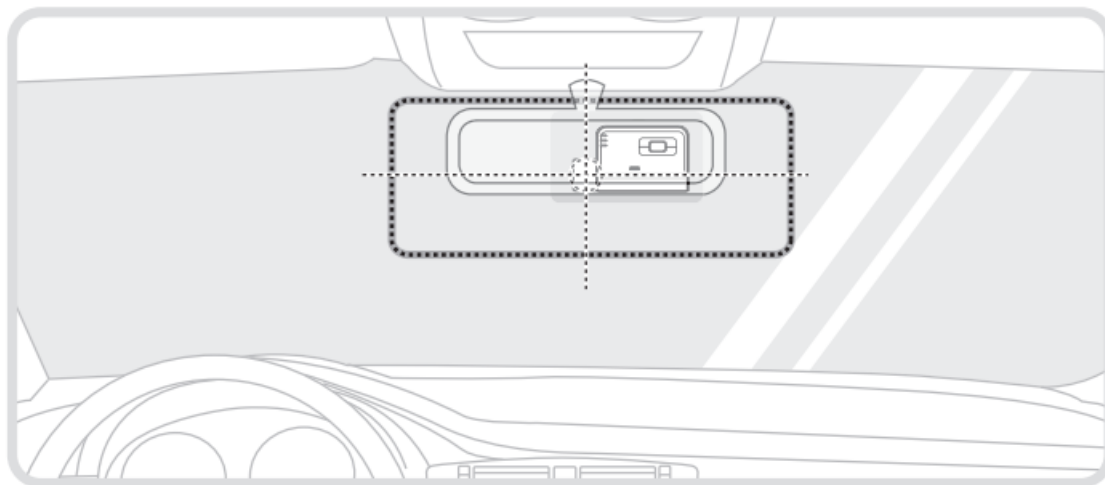
Front camera (main unit) – front view



Front camera (main unit) – rear view



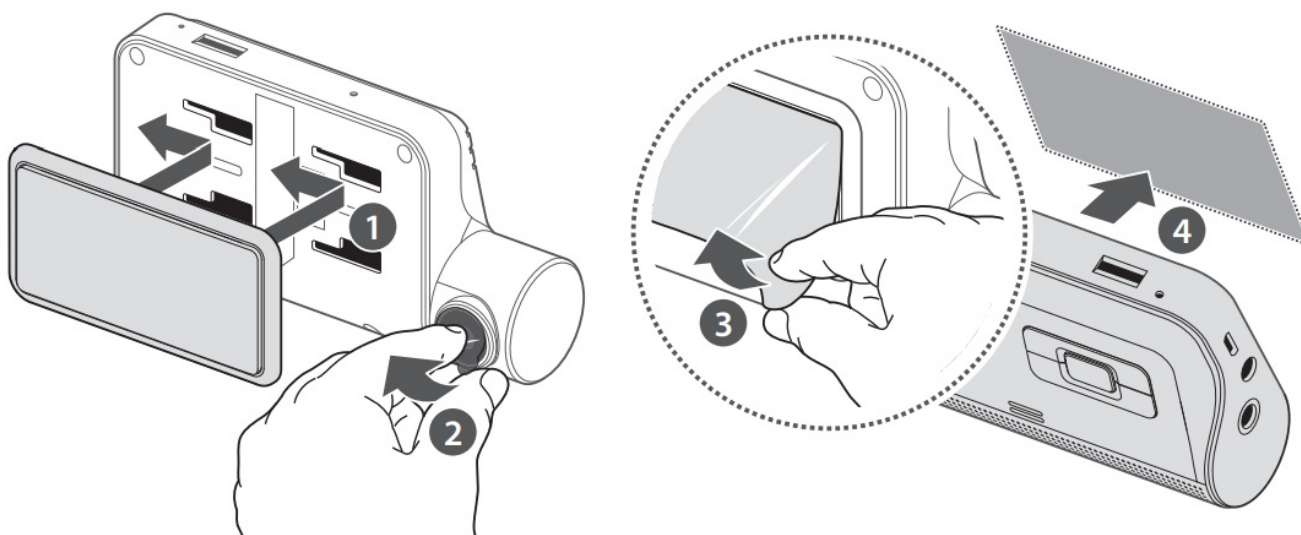
Installing the product



Select an installation location that can record the entire view in front of the vehicle without obstructing the driver's vision.

Ensure that the front camera lens is located in the center of the windshield.

1. Refer to the figures below to install the camera on the windshield.



2. Remove the product from the mount, and then push the mount against the windshield to fix it firmly.

3. Reattach the product to the mount, and then adjust the camera angle.

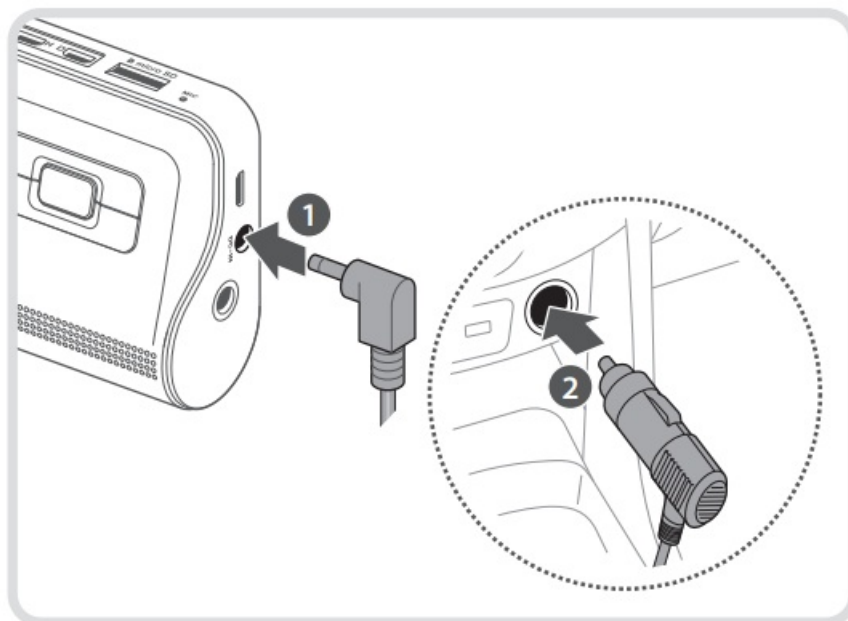


- To confirm the camera angle, record a video after installation and check the video using the mobile viewer or the PC viewer. If necessary, adjust the camera angle again.
- The product may fall and be damaged during vehicle operation if it is not firmly fixed to the mount.
- If you need to remove the mount from the windshield to alter the installation location, be careful not to damage the windshield's film coat.

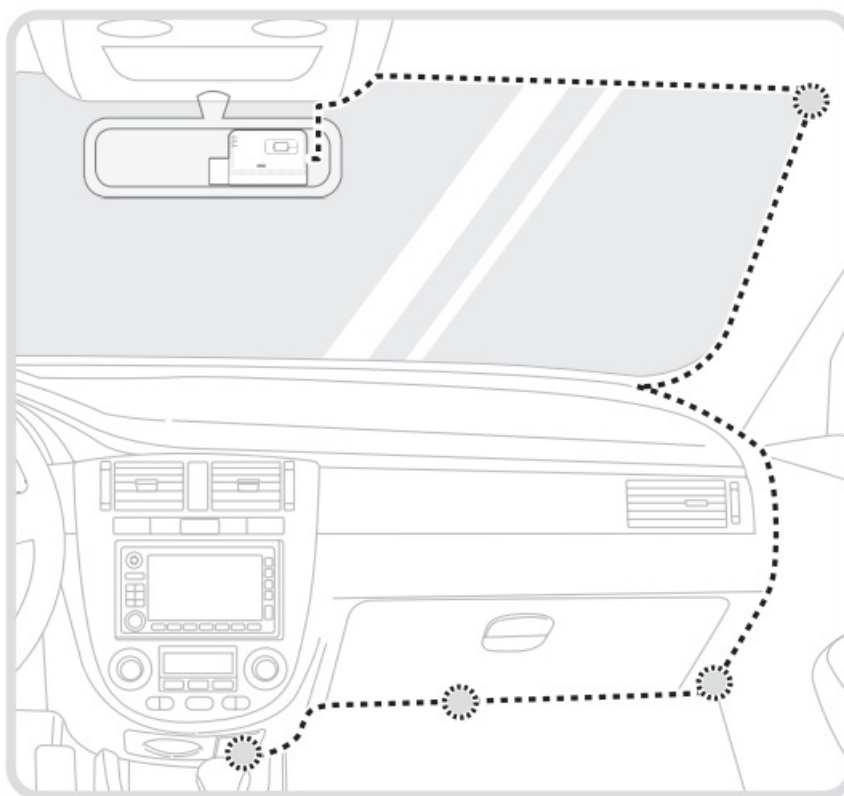
Connecting and arranging the power cable

When the engine and electrical accessories are turned off, connect the car charger.

1. Connect the car charger to the product's DC-IN power port and insert the cigar jack into the vehicle's power socket.



2. Arrange and fix the power cable using the adhesive cable holders. Refer to the figure on the left for the recommended locations for the adhesive cable holders.





- The hardwiring cable (optional) must be professionally installed on the vehicle by a trained mechanic.
- Use the authentic THINKWARE car charger. The use of third-party power cables may damage the product and result in electrical fire or electrocution due to the voltage difference.
- Do not cut or modify the power cable yourself. Doing so may damage the product or the vehicle.
- For safe driving, ensure that the cables do not obstruct the driver's vision or interfere with driving. For more

information about arranging cables, visit www.thinkware.com.

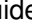
Using the continuous recording features



Connect the power cable to the product's DC-IN power port and then turn on the vehicle's electrical accessories or start the engine. The status LED and the voice guide are turned on, and the continuous recording starts.

Mode	Operation description	Recording LED (REC)
Continuous recording	During driving, videos are recorded in 1-minute segments and stored in the “ cont_rec ” folder.	On 
Incident continuous	When an impact to the vehicle is detected, a video is recorded for 20 seconds, from 10 seconds before the detection to 10 seconds after the detection, and stored in the “ evt_rec ” folder.	Flickers 

Recording manually

You can record a scene you want to capture while driving and store it as a separate file.

To start manual recording, press the REC button. Then, manual recording  will start with the voice guide. During manual recording, the product operates as follows.

Mode	Operation description	Recording LED (REC)
Manual recording	When you press the manual recording () button, a video will be recorded for 1 minute, from 10 seconds before to 50 seconds after pressing the button and stored in the “manual_rec” folder.	Flickers 

Upgrading the firmware

You can download the latest firmware upgrade file from <http://www.thinkware.com/Support/Download>. For detailed information about firmware upgrades, refer to the user guide.

You can also update the firmware from the PC Viewer. A notification popup will be displayed on the PC Viewer screen when a new update file becomes available.

Using the mobile viewer

You can view and manage the recorded videos and configure various product features on your smartphone.



One of the following environments is required to use the THINKWARE CLOUD application:

- Android 4.4 (KitKat) or higher
- iOS 8.0 or higher

Connecting the product to an Android device


1. On your Android device, open the Play Store, and download and install **THINKWARE CLOUD**.
2. Run **THINKWARE CLOUD**.
3. Tap Dash cam connection is required. at the bottom of the screen and follow the on-screen instructions to connect the product to an Android device.




The Wi-Fi password is required when you connect the product to a smartphone for the first time. Enter “123456789” in the password input field.

Connecting the product to an iOS device

Connecting via Wi-Fi

1. On your iOS device, open the App Store, and download and install **THINKWARE CLOUD**.
2. Run **THINKWARE CLOUD**.
3. Tap Dash cam connection is required. at the bottom of the screen.
4. Tap Wi-Fi connection.
5. On the product, press the Wi-Fi () button.
6. From the **THINKWARE CLOUD**, tap Next.
The Wi-Fi Settings screen will appear.
7. From the network list, select the Wi-Fi network starting with “Thinkware.”
8. Enter “123456789” in the Password field, and tap Join.
The product is connected to your iOS device via Wi-Fi.

Connecting via hotspot

1. On your iOS device, open the App Store, and download and install **THINKWARE CLOUD**.
2. Run **THINKWARE CLOUD**.
3. Tap Dash cam connection is required. at the bottom of the screen.
4. Tap Hotspot Connection > Configure New Connection.
5. On the product, press the Wi-Fi () button.
6. From the **THINKWARE CLOUD**, tap Next.
The Wi-Fi Settings screen will appear.
7. From the network list, select the Wi-Fi network starting with “Thinkware.”
8. Enter “123456789” in the Password field, and tap Join.
The product is connected to your iOS device via Wi-Fi.
9. Return to the **THINKWARE CLOUD**, enter the password for your hotspot, and tap Next.



To view the password for your hotspot, from the home screen of your iOS device, tap Settings > Personal Hotspot.

10. Tap Turn On Hotspot.

11. Confirm the pop-up message and tap OK.
12. Turn on the Personal Hotspot and wait until you hear “Connected to the Internet.”



Do not leave the personal hotspot settings screen. Connection is not completed if you leave the personal hotspot settings screen before you hear “Connected to the Internet.”

13. Return to the THINKWARE CLOUD.

The product is connected to your iOS device via hotspot.

Warranty

THINKWARE warrants to the original purchaser for the following period from your purchasing date against deficiencies in material and workmanship under normal use. Should this unit fail to operate in a satisfactory manner within the warranty period, THINKWARE will at its discretion, replace or repair the product. We may use functionally equivalent, similar (if the model is discontinued or out of stock), reconditioned, refurbished, remanufactured, pre-owned, or new products or parts.

MicroSD Card:
Main Dash Cam unit and all Accessories in Box:

If service is required

Should this unit fail to operate in a satisfactory manner, it is best to first check with the store where it was originally purchased. Should this fail to resolve the matter and if you believe your unit meets the criteria for warranty replacement or repair, please contact us at www.thinkware.com/Support.

What this warranty does not cover

This limited warranty does not cover:

1. If the device was not purchased from THINKWARE or its authorized retailers.
2. Device malfunction due to the normal wear and tear, misuse, lack of maintenance, accidents, modification, alteration, or repairs by an unauthorized person or entity.
3. Products that are operated in combination with ancillary or peripheral equipment not furnished or otherwise certified by THINKWARE for use with the product or any damage to the products or ancillary equipment as a result of such uses.
4. THINKWARE is not liable for any damages (properties, business, and/or indirect damages), loss or corruption of data for any reason, product damage, or personal injuries that occur due to accidents or natural disasters.
5. THINKWARE Dash Cam records and saves video of vehicle accidents. It does not however guarantee to record all accidents. Accidents with a light impact that is not enough to activate the impact detection sensor may not be recorded.

LIMITED WARRANTY AND DISCLAIMERS

THINKWARE warrants that the product will be free from defects in materials or workmanship under normal use for one (1) year starting from the original date of purchase. You may be required to provide proof of purchase as a condition of receiving warranty service. The obligations of THINKWARE and the right of the purchaser under this warranty is limited to repair or replacement at the option of THINKWARE authorized dealer. The purchaser must

provide notice of any defect within one (1) year from the date of purchase and the defective product must be returned to the store where it was originally purchased or THINKWARE authorized dealers, at your expense.

Where permitted by local law, THINKWARE Products and any replacement products or parts may be either new or refurbished to be functionally equivalent to new in performance and reliability. Replacement products or parts will have functionality at least equal to that of the product or part being replaced. Replacement products and parts are warranted to be free from defects in materials or workmanship for 90 days, or for the remainder of the warranty period for the THINKWARE Product which they are replacing or in which they are installed, whichever is longer. This Limited Warranty extends only to the original retail or wholesale Buyer.

This Limited Warranty does not cover cosmetic damage or damage resulting from (a) accident, abuse, misuse, natural disaster, insufficient or excessive electrical supply, abnormal environmental conditions, or other external causes; (b) repair, replacement, modification, unauthorized disassembly or service by anyone other than THINKWARE or THINKWARE authorized service provider; or (c) modification or conversion conducted at user's discretion, carelessness, or negligence. EXCEPT AS EXPRESSLY SET FORTH IN THIS LIMITED WARRANTY, THERE ARE NO OTHER WARRANTIES, EXPRESS OR IMPLIED, FOR YOUR THINK ARE PRODUCT. ALL IMPLIED WARRANTIES OF MERCHANTABILITY OR FITNESS FOR A PARTICULAR PURPOSE IMPOSED BY LAW ARE LIMITED IN DURATION TO THE APPLICABLE WARRANTY PERIOD. THINKWARE DISCLAIMS ALL OTHER WARRANTIES INCLUDING ANY IMPLIED WARRANTIES.

This Limited Warranty gives you specific legal rights, and it is governed by the laws of the jurisdiction in which your THINKWARE Product was purchased. Some jurisdictions do not allow any limitation on how long a limited warranty will last or the exclusion or limitation of incidental or consequential damages in which case, the exclusions or limitations stated in this Limited Warranty may not apply to you. You may also have other rights that vary by jurisdiction. To the extent allowed by local law, the remedies provided in this Limited Warranty are your sole and exclusive remedies. These terms and conditions supersede any prior agreements or representations, including statements made in sales literature or advice given in connection with your purchase.

EXCEPT AS EXPRESSLY SET FORTH IN THIS LIMITED WARRANTY, THERE ARE NO OTHER WARRANTIES, EXPRESS OR IMPLIED, FOR YOUR THINK ARE PRODUCT. ALL IMPLIED WARRANTIES OF MERCHANTABILITY OR FITNESS FOR A PARTICULAR PURPOSE IMPOSED BY LAW ARE LIMITED IN DURATION TO THE APPLICABLE WARRANTY PERIOD. THINKWARE DISCLAIMS ALL OTHER WARRANTIES INCLUDING ANY IMPLIED WARRANTIES.

This Limited Warranty gives you specific legal rights, and it is governed by the laws of the jurisdiction in which your THINKWARE Product was purchased. Some jurisdictions do not allow any limitation on how long a limited warranty will last or the exclusion or limitation of incidental or consequential damages in which case, the exclusions or limitations stated in this Limited Warranty may not apply to you. You may also have other rights that vary by jurisdiction.

To the extent allowed by local law, the remedies provided in this Limited Warranty are your sole and exclusive remedies. These terms and conditions supersede any prior agreements or representations, including statements made in sales literature or advice given in connection with your purchase.


TO THE EXTENT ALLOWED BY LOCAL LAW, AND EXCEPT AS SPECIFICALLY SET FORTH IN THIS LIMITED WARRANTY, IN NO EVENT SHALL THINKWARE OR ANY THINKWARE-AUTHORIZED SERVICE PROVIDER BE LIABLE FOR (1) ANY DAMAGES CAUSED BY THE PRODUCT OR THE FAILURE OF THE PRODUCT TO PERFORM, (2) ANY DAMAGES RESULTING FROM LOSS DATA, OR (3) ANY INCIDENTAL, CONSEQUENTIAL, CONTINGENT OR SPECIAL DAMAGES WHATSOEVER, (4) ANY OBLIGATIONS ARISING FROM TORT OR ANY OTHER LEGAL THEORY, AND WHETHER OR NOT ADVISED OF THE POSSIBILITY OF SUCH DAMAGES. THINKWARE MAKES NO OTHER WARRANTIES.

Limited 6 Month Warranty:

Product carrying a 6-month warranty against defects in materials and workmanship includes THINKWARE MicroSD card included in the product package.

In the event of a product defect that requires support during the warranty period, please contact THINKWARE Customer Support (www.thinkware.com) for assistance.

Documents / Resources

	THINKWARE Q800 Pro WiFi Dash Cam [pdf] User Guide Q800 Pro, WiFi Dash Cam, Q800 Pro WiFi Dash Cam
---	--

References

-  [Thinkware Dash Cam | Official Site](#)
-  [Private Site](#)