

## THINKWARE Q200 Dash Cam



# THINKWARE Q200 Dash Cam User Guide

[Home](#) » [THINKWARE](#) » THINKWARE Q200 Dash Cam User Guide 

### Contents

- 1 [THINKWARE Q200 Dash Cam](#)
- 2 [Power the Dash Cam](#)
- 3 [Download the App](#)
- 4 [Connect to the App](#)
- 5 [Install the Front Camera](#)
- 6 [Install the Rear View Camera](#)
- 7 [Dash Cam Settings in the App](#)
- 8 [FAQ & Help Desk](#)
- 9 [Documents / Resources](#)
  - 9.1 [References](#)
- 10 [Related Posts](#)

# THINKWARE™

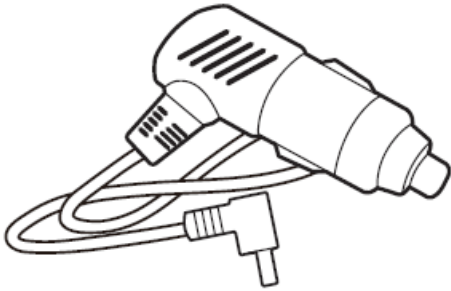
## THINKWARE Q200 Dash Cam



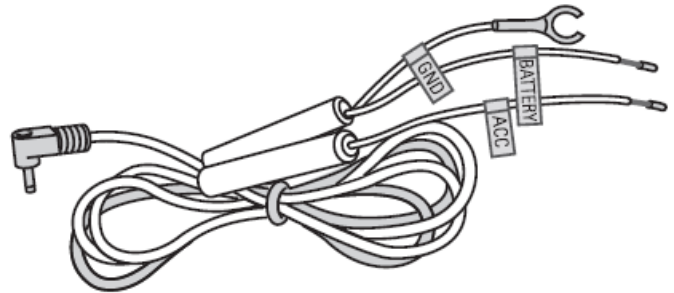
## Power the Dash Cam

### Use one of the following options

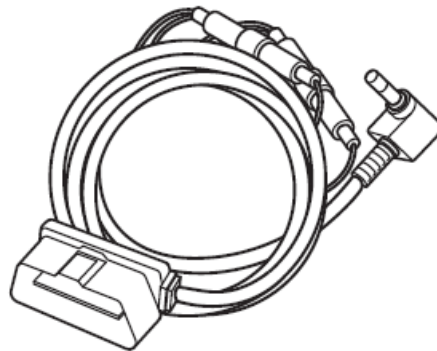
The included cable options vary depending on the dash cam model purchased.



**12V Power Cable**



**Hardwiring Cable\***



**OBD-II Cable\***

### Note

- To enable Parking Surveillance mode, the dash cam needs to be powered by either the OBD-II Cable or Hardwiring Cable (professional installation recommended).

### Download the App

Download the **THINKWARE DASHCAM LINK App**



## THINKWARE DASH CAM LINK



**Apple Store (iOS)**

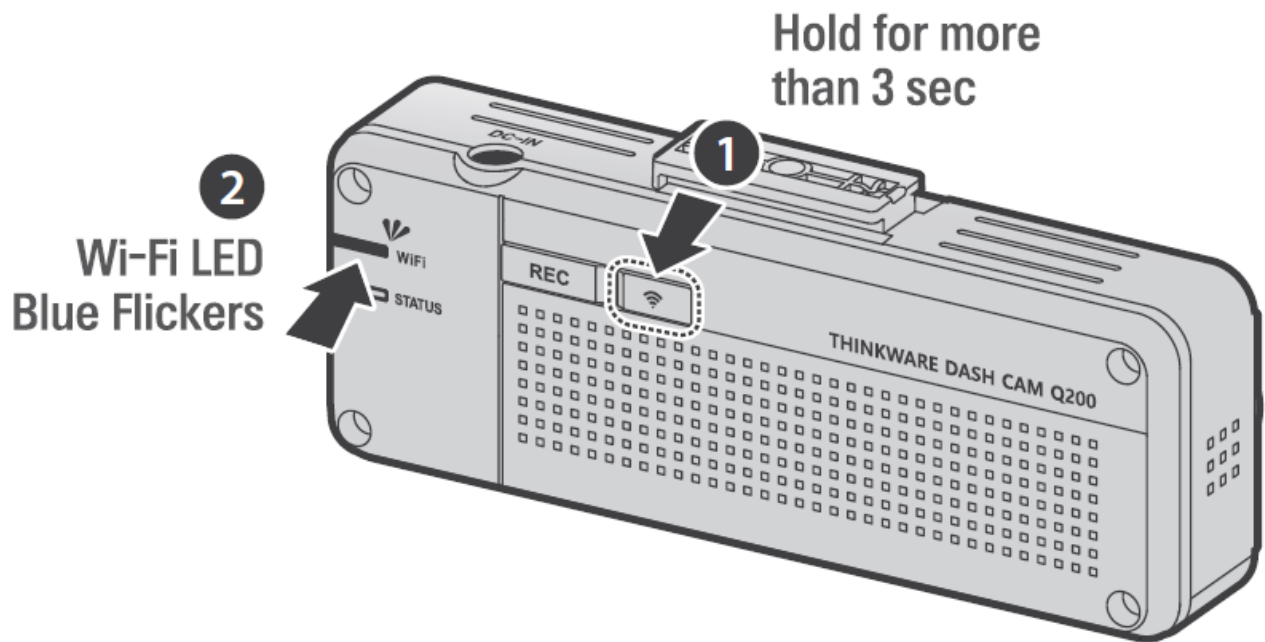



**Google Play Store (Android)**

- On your smartphone, open the Google Play Store or Apple App Store and download and install THINKWARE DASH CAM LINK.

**Connect to the App**

**Follow the on-screen instructions**

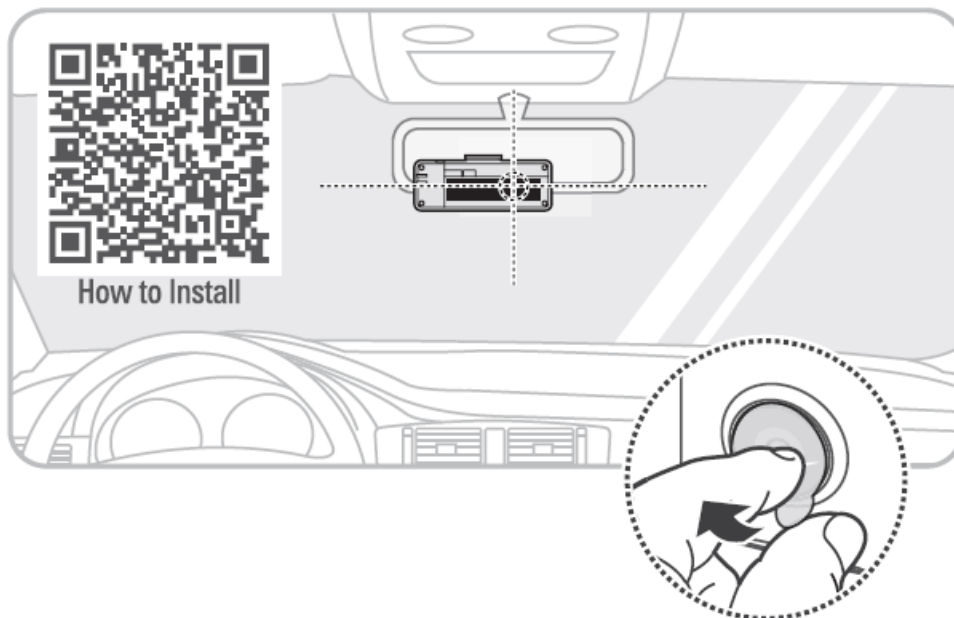


1. Press the Wi-Fi  button on the Dash Cam for at least 3 seconds.

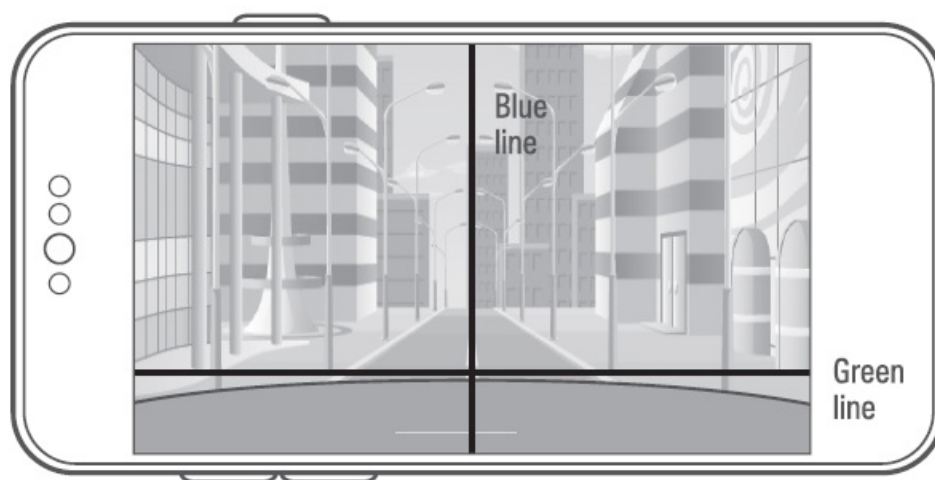
**Won't Connect to the App?**



**Install the Front Camera**

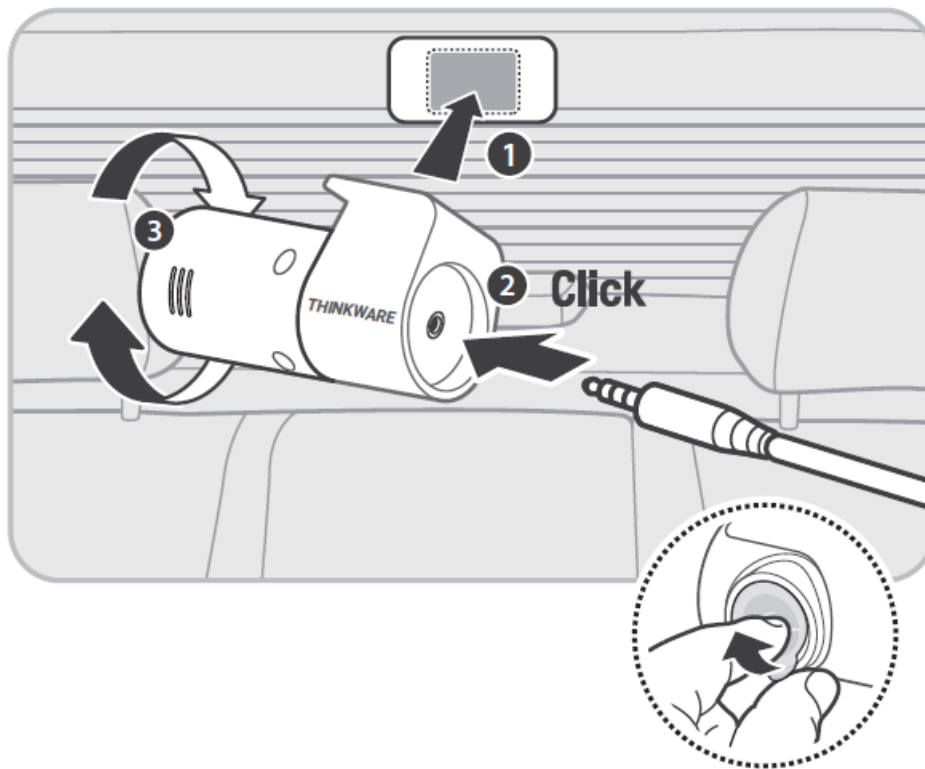


**Open Live View in the app**

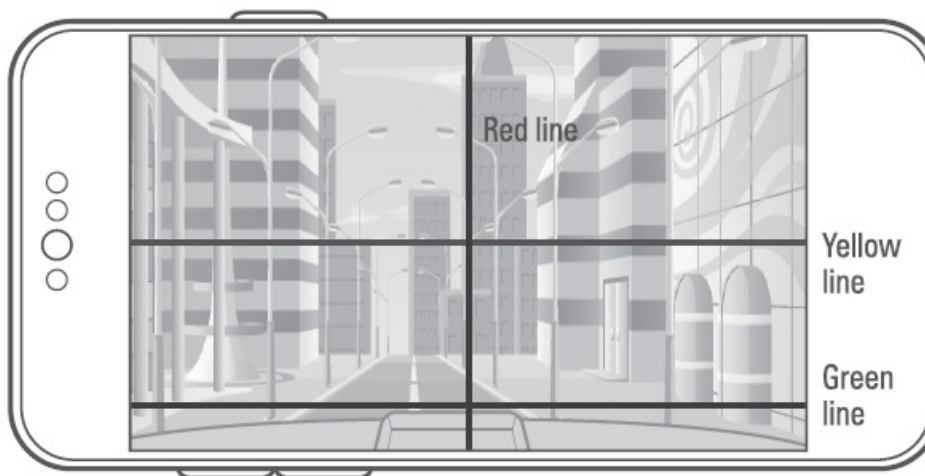


- Blue line with the center
- Green line with the front edge of the hood

**Install the Rear View Camera**



### Open Live View Rear Camera in App



ACMA-027PAM301

- Red line with the trunk center
- Yellow line with the center of the horizon
- Green line with the trunk line

### Dash Cam Settings in the App

#### Default settings out of the box

The default settings are as follows, and you have the option to adjust them according to your preference.

Options	Description
Voice Recording	Enabled
System Volume	0 1 2 3
Parking Mode	Disabled
Super Night Vision	Parking Mode
ADAS	Disabled
Speed Stamp	Disabled
Safety Camera	Enabled

## FAQ & Help Desk

### Still have questions or issues?

For further assistance or to report any issues, please contact our support team.

- **North America**

- 1 (844) 865-9273
- [support@thinkware.com](mailto:support@thinkware.com)

- **United Kingdom**

- 44 (0) 333-121-0008
- [support.eu@thinkware.com](mailto:support.eu@thinkware.com)

- **European Union**

- (+49) 69-943-22200
- [support@thinkware.com](mailto:support@thinkware.com)


## FAQs & Help Desk



Please refer to CS Information QR in the box for other countries.

---

## Documents / Resources

	<a href="#">THINKWARE Q200 Dash Cam</a> [pdf] User Guide ACMA-027PAM301, Q200 Dash Cam, Q200, Dash Cam, Cam
---	--

## References

- [User Manual](#)

### Manuals+, [Privacy Policy](#)

This website is an independent publication and is neither affiliated with nor endorsed by any of the trademark owners. The "Bluetooth®" word mark and logos are registered trademarks owned by Bluetooth SIG, Inc. The "Wi-Fi®" word mark and logos are registered trademarks owned by the Wi-Fi Alliance. Any use of these marks on this website does not imply any affiliation with or endorsement.