

THINKWARE ARC Dash Cam



THINKWARE ARC Dash Cam User Guide

[Home](#) » [THINKWARE](#) » THINKWARE ARC Dash Cam User Guide 

Contents

- 1 THINKWARE ARC Dash Cam
- 2 FAQ
- 3 Power the Dash Cam
- 4 Download the App
- 5 Connect to the App
- 6 Cameras Installing Instructions
- 7 Dash Cam Settings in the App
- 8 FAQ & Help Desk
- 9 Documents / Resources
 - 9.1 References
- 10 Related Posts

THINKWARE

THINKWARE ARC Dash Cam



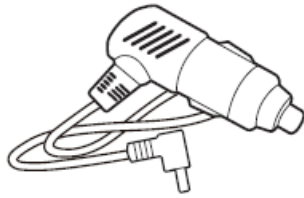
FAQ

- **Q:** How do I reset the device?
 - **A:** To reset the device, locate the reset button on the back panel and press it with a sharp object like a paperclip for a few seconds.
- **Q:** Can I use this product in extreme temperatures?
 - **A:** The product is designed to operate within a specific temperature range. Using it outside this range may affect performance and durability.

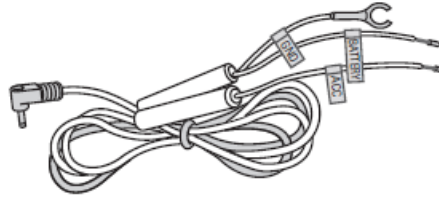
Power the Dash Cam

Use one of the following options

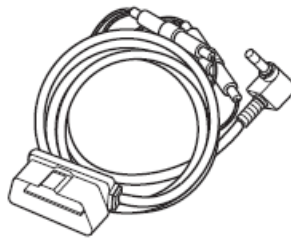
The included cable options vary depending on the dash cam model purchased.



12V Power Cable



Hardwiring Cable*



OBD-II Cable*

- To enable Parking Surveillance mode, the dash cam needs to be powered by either the OBD-II Cable or Hardwiring Cable (professional installation recommended).

Download the App

Download the THINKWARE DASHCAM LINK App



THINKWARE DASH CAM LINK



Apple Store (iOS)




Google Play Store (Android)

- On your smartphone, open the Google Play Store or Apple App Store and download and install THINKWARE DASH CAM LINK.

Connect to the App

Follow the on-screen instructions



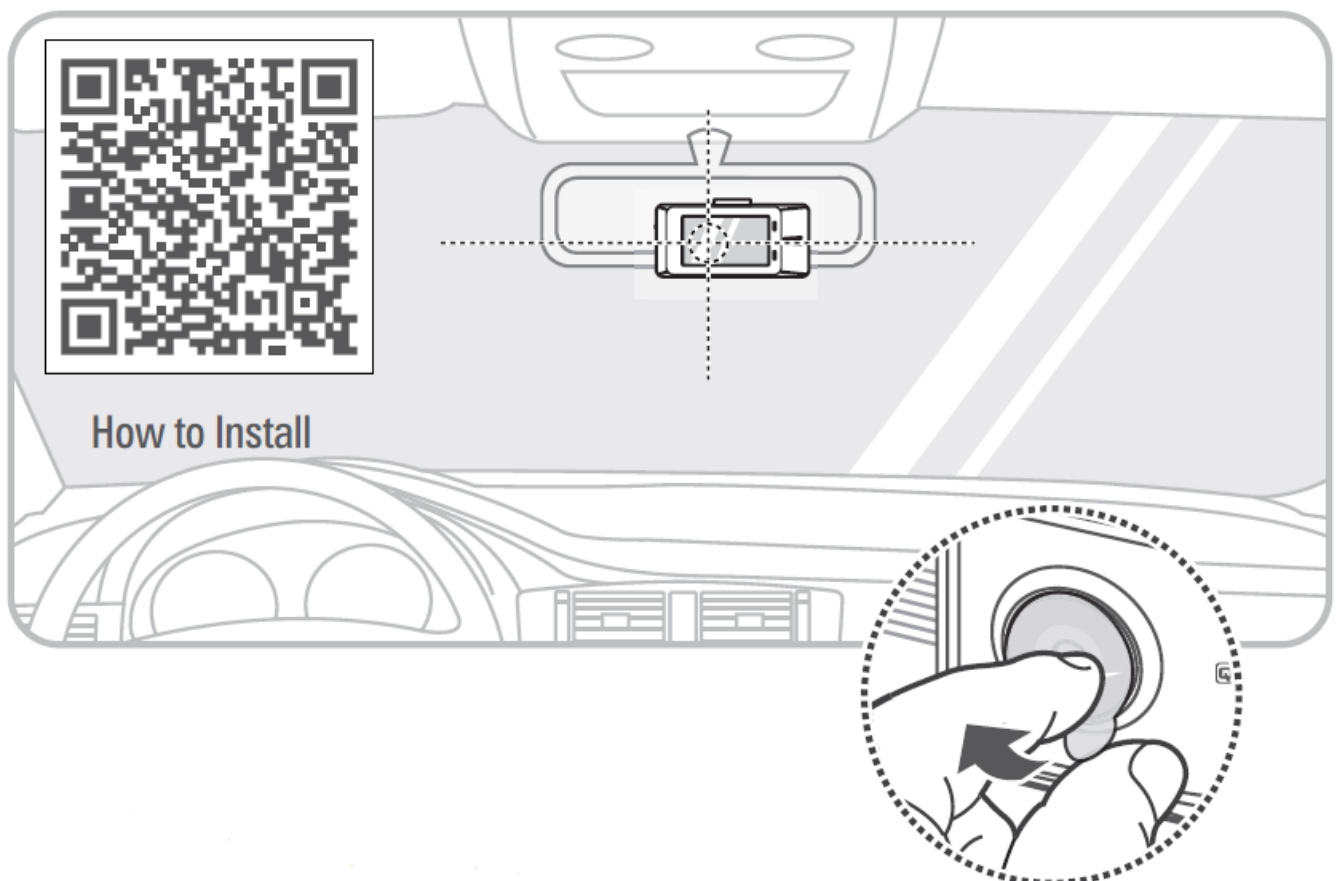
1. Press the Wi-Fi  icon on the dash cam you want to connect.



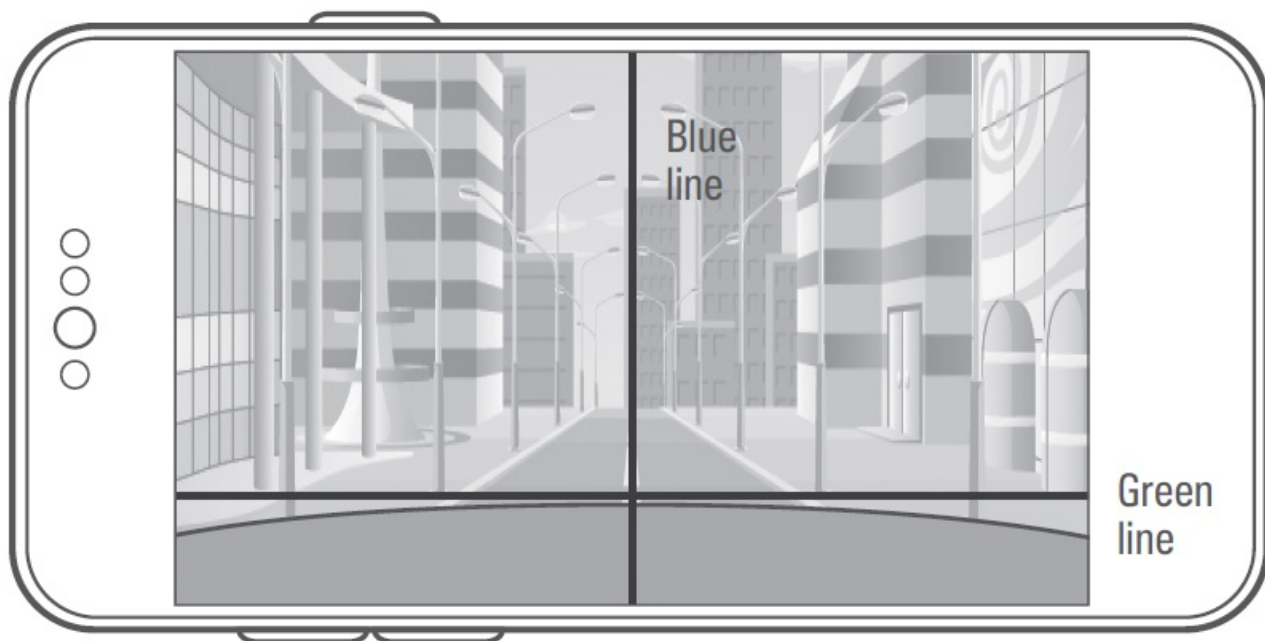
2. Scan the QR code and connect according to the app instructions.

Cameras Installing Instructions

Install the Front Camera

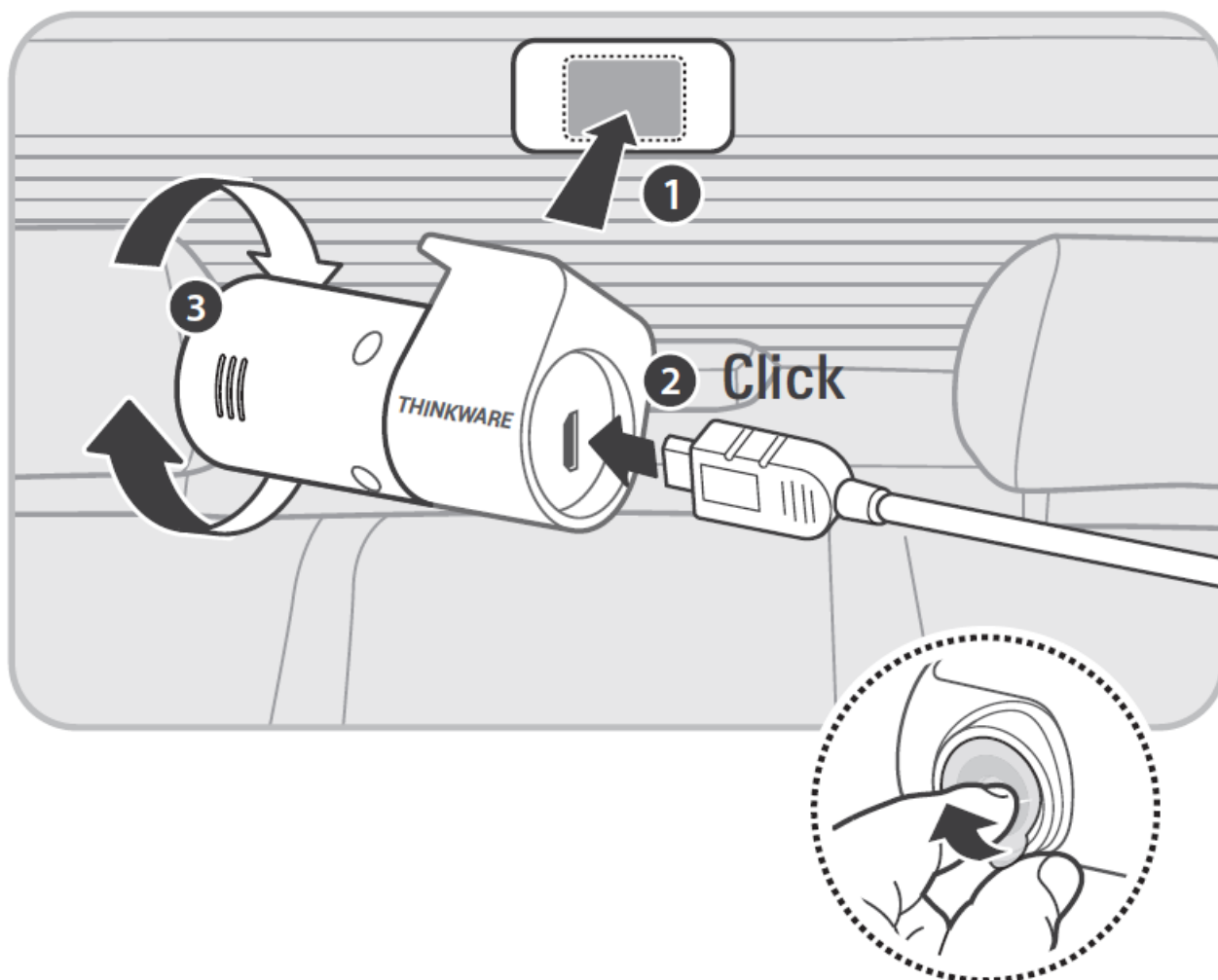


Open Live View in the app

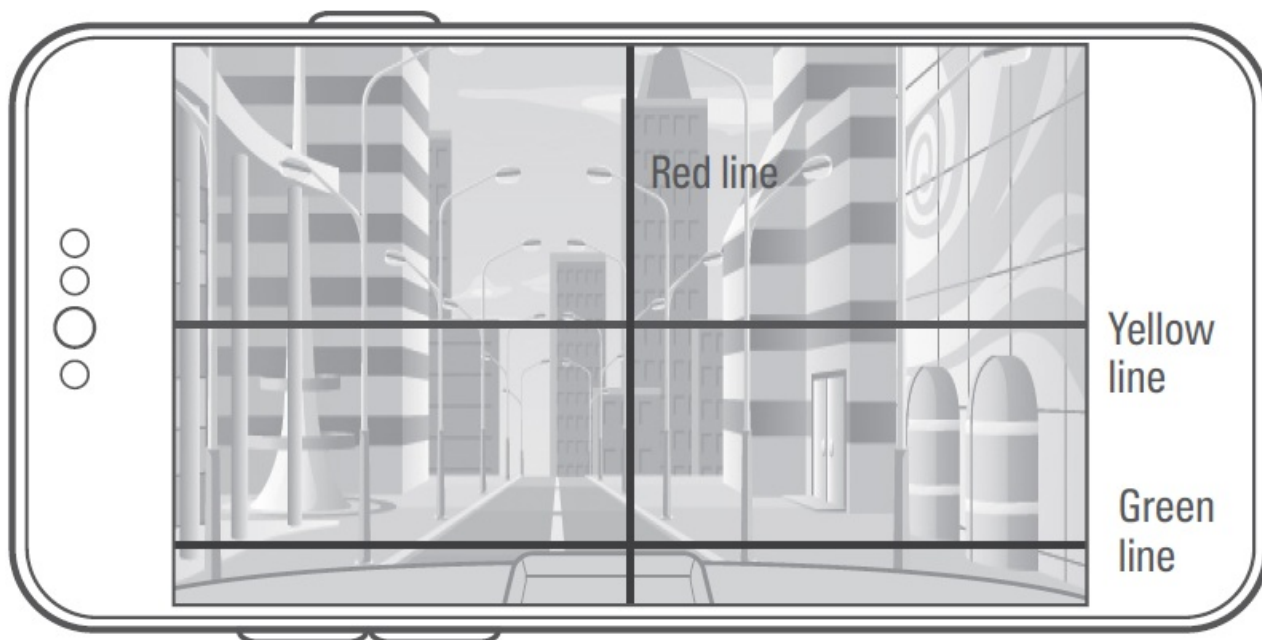


- Blue line with the center
- Green line with the front edge of the hood

Install the Rear View Camera



Open Live View Rear Camera in App



- Red line with the trunk center
- Yellow line with the center of the horizon
- Green line with the trunk line

Dash Cam Settings in the App

Default settings out of the box

The default settings are as follows, and you have the option to adjust them according to your preference.

Options	Description
Voice Recording	Enabled
System Volume	0 1 2 3
Parking Mode	Motion Detection
Smart Parking Mode	Thermal Protection – Enabled
	Long-Time Recording – Disabled
Battery Protection	Enabled
Super Night Vision	Parking Mode
ADAS	Disabled
Speed Stamp	Disabled
Safety Camera	Disabled

FAQ & Help Desk

Still have questions or issues?

For further assistance or to report any issues, please contact our support team.

North America

- 1 [844-865-9273](tel:844-865-9273)
- support@thinkware.com

United Kingdom

- 44 (0) 333-121-0008
- support.eu@thinkware.com

European Union

- (+49) 69-943-22200
- support@thinkware.com

[FAQs & Help Desk](#)



Please refer to CS Information QR in the box for other countries.

Documents / Resources

<div>THINKWARE DASH CAM™ Quick Start Guide</div> <div>ARC</div>	<div>THINKWARE ARC Dash Cam [pdf] User Guide</div> <div>4XLFN6WDUW, 93RZHU DEOH, DEOH, ARC Dash Cam, ARC, Dash Cam, Cam</div>
---	---

References

- [User Manual](#)

[Manuals+](#), [Privacy Policy](#)

This website is an independent publication and is neither affiliated with nor endorsed by any of the trademark owners. The "Bluetooth®" word mark and logos are registered trademarks owned by Bluetooth SIG, Inc. The "Wi-Fi®" word mark and logos are registered trademarks owned by the Wi-Fi Alliance. Any use of these marks on this website does not imply any affiliation with or endorsement.