



# THINKERRIDE Smart Bicycle Computer Meter User Guide

[Home](#) » [THINKERRIDE](#) » THINKERRIDE Smart Bicycle Computer Meter User Guide 



## Contents

- 1 [THINKERRIDE Smart Bicycle Computer Meter User Guide](#)
- 2 [INSTALLATION GUIDE](#)
- 3 [KEY INTRODUCTION AND OPERATION](#)
- 4 [STEPS OF APP CONNECTION](#)
- 5 [APP OPERATION GUIDE](#)
- 6 [FCC Statement](#)
- 7 [Documents / Resources](#)
- 8 [Related Posts](#)

## THINKERRIDE Smart Bicycle Computer Meter User Guide



## INSTALLATION GUIDE



### Step 1

Press the bracket on the handlebars with your hand



### Step 2

Use elastic rubber buckle to fix



### Step 3

Rotated 90° for the meter base in the card slot

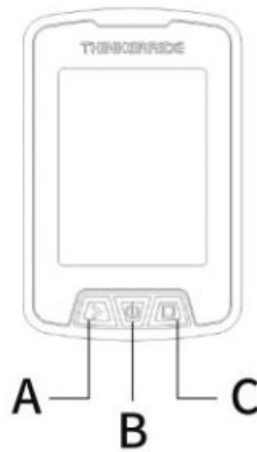


### Step 4

Complete installation

## KEY INTRODUCTION AND OPERATION

### SMART METER KEY



### A-key function

Instrument status	Press A-key for short time	Press A-key for long time
Standby	(Press for short time) start recording	(Press for long time) stop recording and generate riding report
riding record	(Press for short time) suspend recording	
Suspended	(Press for short time) continue recording	



### Tips: The APP can also control the recording

Click “Start riding” on the home page to enter the page of cycling data record ; Click start recording, suspend recording and stop recording; the meter will synchronize your operation , try it now ~

### B-key function

Instrument status	Press B-key for short time	Press B-key for long time
When the phone rings	(Press for short time) refuse the phone	(Press for long time) power on/off in any state
When you receive Wechat and short message	(Press for short time) turn off message reminders	
When you navigate	(Press for short time) turn off navigation	

#### C-key function

Press C-key for short time	Press C-key for long time
(Press for short time) switch the page	(Press for long time) disconnect the phone

#### CHARGING



Open the dust cover to perform USB charging.  
Provide support for charging and using

#### STEPS OF APP CONNECTION

##### CONNECT APP OF THINKERRIDE

Scan and download Thinkerride to complete the following operations



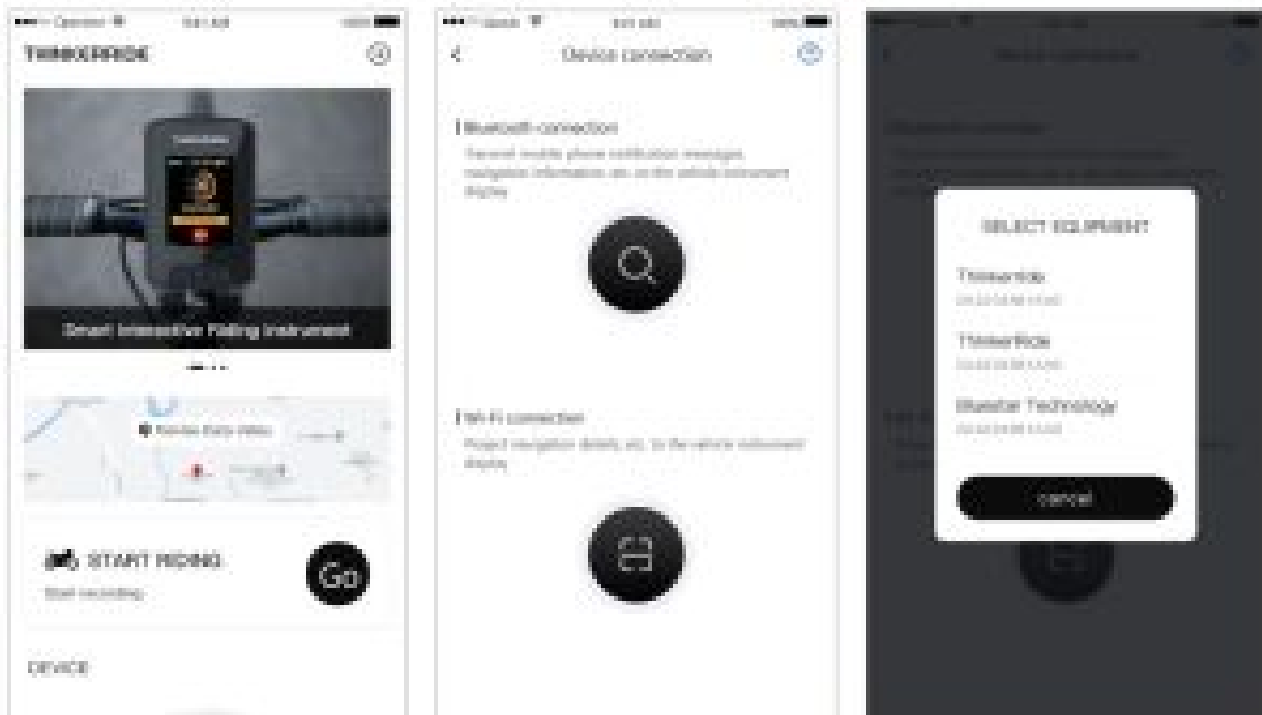
## 1. START THE SMART STOP-WATCH

Keep the cycling instrument power on, and press > for short time to open the Bluetooth connection information



## 2. MATCH WITH APP OF THINKERRIDE

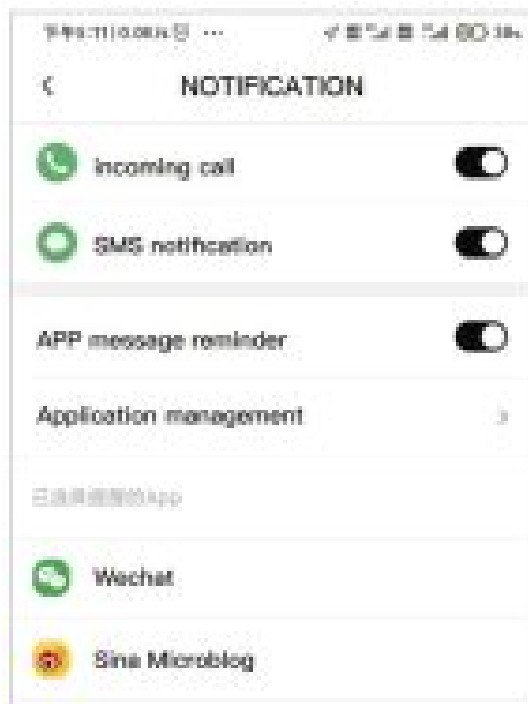
- Register and log in APP. Enter the home page and click the [+] button on the upper right corner to add device button
- Enter the device connection page and click and search Bluetooth button
- Select the Bluetooth address of the device in the device selection box, to connect



## APP OPERATION GUIDE

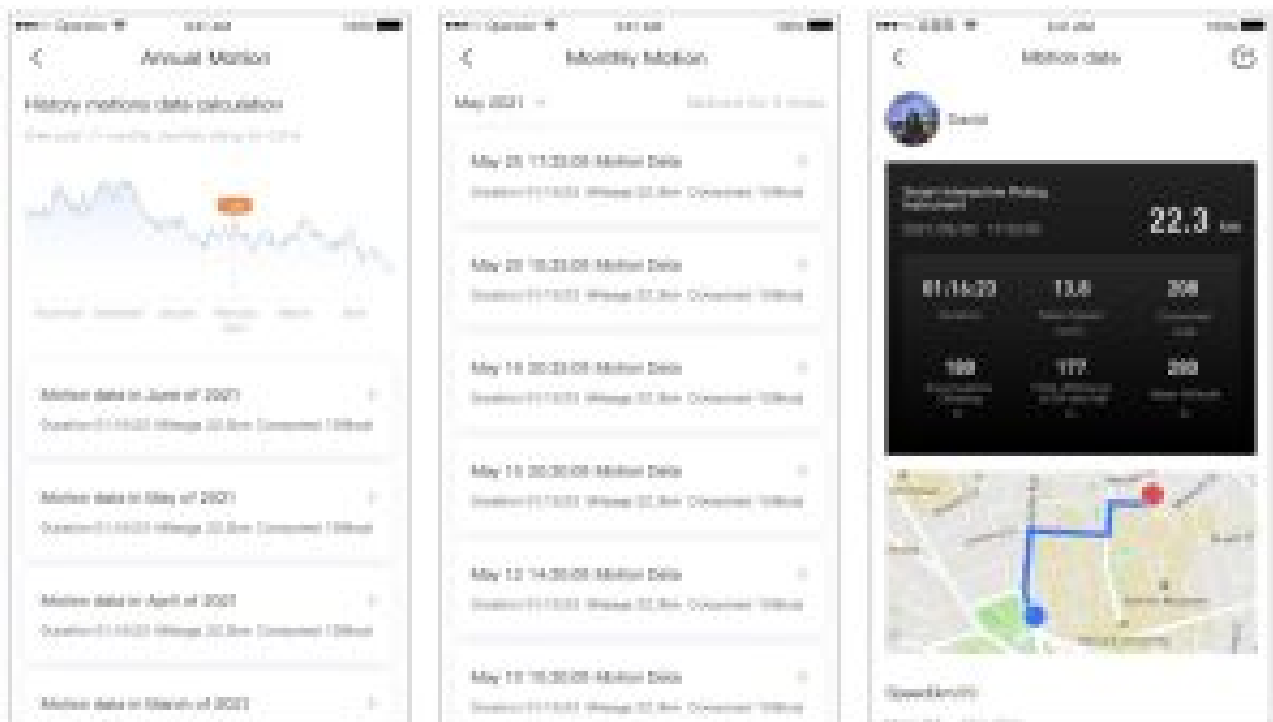
### CALLER AND MESSAGE SETTINGS

smart meter supports caller reminder, SMS reminder and mobile phone application reminder to let you not miss any important information on the way of riding and make your riding more safe. In APP- My Settings – Mobile Message Reminder, customize the reminder content.



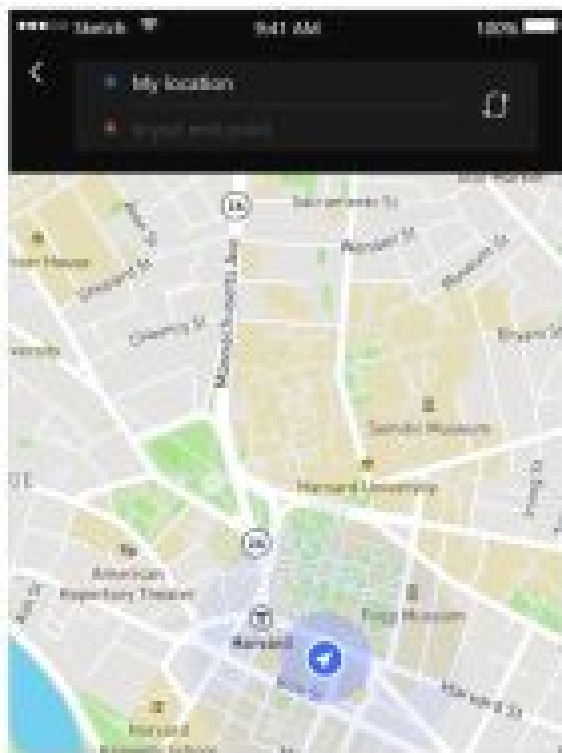
### CHECK THE RIDING DATA

After each riding, the APP will actively and synchronously store your riding data. In APP- Home Page – Sports Data Record, check all the sports data.



## HOW TO NAVIGATE DYNAMICALLY

Start APP to start navigation. Smart meter will display dynamic navigation synchronously. On the APP- Home – Map – Navigation page, plan the navigation destination.



## SETTINGS

When APP connects smart meter, In APP- Home – smart meter Settings, set the smart meter.

## FCC Statement

This device complies with part 15 of the FCC rules. Operation is subject to the following two conditions: (1) this device may not cause harmful interference, and (2) this device must accept any interference received, including interference that may cause undesired operation. Changes or modifications not expressly approved by the party responsible for compliance could void the user's authority to operate the equipment.

**NOTE:** This equipment has been tested and found to comply with the limits for a Class B digital device, pursuant to part 15 of the FCC Rules. These limits are designed to provide reasonable protection against harmful interference in a residential installation. This equipment generates uses and can radiate radio frequency energy and, if not installed and used in accordance with the instructions, may cause harmful interference to radio communications.

However, there is no guarantee that interference will not occur in a particular installation. If this equipment does cause harmful interference to radio or television reception, which can be determined by turning the equipment off and on, the user is encouraged to try to correct the interference by one or more of the following measures:

- Reorient or relocate the receiving antenna.
- Increase the separation between the equipment and receiver.
- Connect the equipment into an outlet on a circuit different from that to which the receiver is connected.
- Consult the dealer or an experienced radio/TV technician for help.

The device has been evaluated to meet general RF exposure requirement. The device can be used in portable exposure condition without restriction.

**Read More About This Manual & Download PDF:**

**Documents / Resources**



# SMART METER QUICKSTART GUIDE



## INSTALLATION GUIDE



Step 1 Press the bracket on the backboard with your hand



Step 2 Insert the rubber bracket in the backboard with your hand



Step 3 Repeat the step for the other back of the meter



Step 4 Complete installation

## KEY INTRODUCTION AND OPERATION

### SMART METER KEY

Key Function	Press Key for	Press Key for
Indication	Short Press	Press Key for long time
Standby	(Press for short time) short pressing	(Press for long time) long pressing
riding record	(Press for short time) short pressing	(Press for long time) long pressing and generate riding report
Expanded	(Press for short time) short pressing	(Press for long time) long pressing

Tip: The APP can also control the recording.

Click "Start riding" in the APP page to start the recording of riding data. Click "Stop recording" in the APP page to stop the recording of riding data. Click "View riding report" in the APP page to view the riding report.

Key Function	Press Key for	Press Key for
Indication	Short Press	Press Key for long time
Standby	(Press for short time) short pressing	(Press for long time) long pressing
riding record	(Press for short time) short pressing	(Press for long time) long pressing and generate riding report
Expanded	(Press for short time) short pressing	(Press for long time) long pressing

Key Function	Press Key for
Short Press	Press Key for long time
Long Press	Press Key for long time

### CHARGING

Insert the USB cable to perform USB charging. Please refer to the charging manual.

## STEPS OF APP CONNECTION

### CONNECT APP OF THINKERRIDE

Scan the QR code to connect the APP of Thinkerride.

### START THE SMART STOP-WATCH

Keep the riding mode power on, and press the "Start" button to start the riding mode.



### MATCH WITH APP OF THINKERRIDE

1. Register and log in APP. 2. Enter the APP page and click "Start riding". 3. Follow the APP page to complete the connection. 4. Enter the APP page and click "Start riding". 5. Follow the APP page to complete the connection.



## APP OPERATION GUIDE

### CALLER AND MESSAGE SETTINGS

1. Click "Settings" in the APP page. 2. Click "Caller and message settings". 3. Click "Caller and message settings". 4. Click "Caller and message settings".



### CHECK THE RIDING DATA

After each riding, the APP will automatically generate the riding data. You can click "View riding data" in the APP page to view the riding data.



### HOW TO NAVIGATE DYNAMICALLY

Click "Start riding" in the APP page to start the riding. Click "Stop riding" in the APP page to stop the riding. Click "View riding data" in the APP page to view the riding data.



### SETTINGS

Click "Settings" in the APP page to start the settings. Click "Caller and message settings" in the APP page to start the settings. Click "View riding data" in the APP page to start the settings.

**THINKERRIDE Smart Bicycle Computer Meter [pdf] User Guide**  
20201028, 2A2VZ-20201028, 2A2VZ20201028, Smart Bicycle Computer Meter, Smart Meter

