



Thinkbee CK1 Wireless Light Switch Kit User Manual

[Home](#) » [Thinkbee](#) » Thinkbee CK1 Wireless Light Switch Kit User Manual 

Thinkbee CK1 Wireless Light Switch Kit User Manual



***Note:** The product depicted in this manual may appear slightly different from what you receive in the box*

This device complies with part 15 of the FCC Rules. The user is cautioned that any changes or modifications not expressly approved by the party responsible for compliance could void the user's authority to operate the equipment.

Note: This equipment has been tested and found to comply with the limits for a Class B digital device, pursuant to Part 15 of the FCC Rules. These limits are designed to provide reasonable protection against harmful interference in a residential installation. This equipment generates, uses and can radiate radio frequency energy and, if not installed and used in accordance with the instructions, may cause harmful interference to radio communications. However, there is no guarantee that the interference will not occur in a particular installation. If this equipment does cause harmful interference to radio or television reception, which can be determined by turning the equipment off and on, the user is encouraged to try to correct the interference by one or more of the following

measures:

1. Reorient or relocate the receiving antenna.
2. Increase the separation between the equipment and receiver.
3. Connect the equipment into an outlet on a circuit different from that to which the receiver is connected.
4. Consult the dealer or an experienced radio/TV technician for help.

To maintain compliance with FCC's RF Exposure guidelines, this equipment should be installed and operated with minimum distance between 20cm the radiator your body: Use only the supplied antenna.

Contents

[1 Installation Warnings](#)

[2 Installation](#)

[3 Pairing](#)

[4 Add another switch from paired switch](#)

[5 Delete pairing for paired switch \(Please use cautiously\)](#)

[6 Delete pairing for paired receiver \(Please use cautiously\)](#)

[7 Application \(Home, hotel, inn or Factory etc.\)](#)

[8 Set Open/Close state of the receiver in combination use with traditional switch](#)

[9 Installation](#)

[10 The methods of open the switch and change battery](#)

[11 Specifications of Wireless receiver](#)

[12 Documents / Resources](#)

[12.1 References](#)

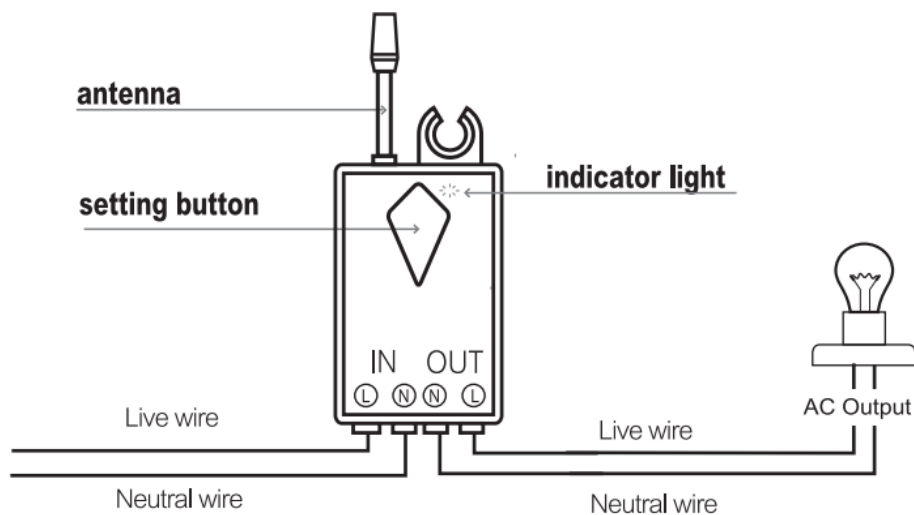
[13 Related Posts](#)

Installation Warnings

1. The receiver must be installed by professional who has got electrician
2. Had better program the switch from receiver for first installation.
3. Protect the receivers from damage by falling from height over 1m.
4. Do not touch the output live line with output neutral line after wiring, or receiver will be short circuit.
5. It is not advisable to install switch on metal surface or receiver in a metal confined cover, metal will shield wireless signal, thus shortening remote control distance.
6. Install the receivers where man cannot reach.

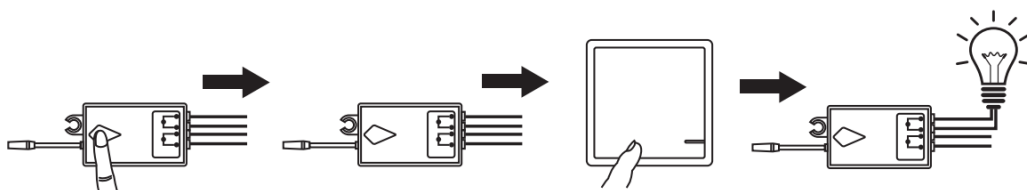
Installation

Remind: After install the receiver, you must pair the wireless switch and the receiver before use. Please refer to page 3, entitled "**Pairing**."



Pairing

1. Connect the receiver between the light and the power source.
2. Power on electricity, press and hold the setting button for 2 seconds. When the indicator light flashes, it enters into pairing mode, then loosen your finger.
3. Press the wireless switch that you want to pair. Light on, indicating that the pairing is successful.
4. Not recommended that 1 switch controls many receivers.

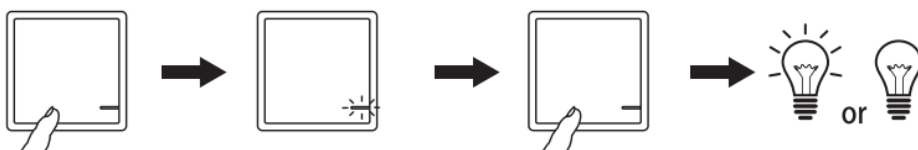


Add another switch from paired switch



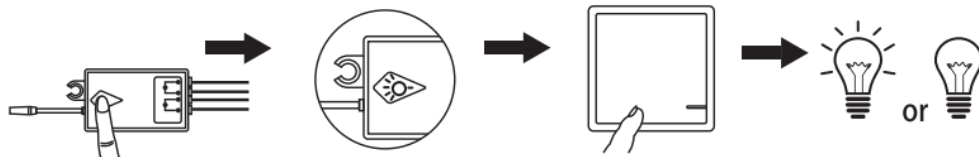
Press and hold paired switch panel for about 20s till LED indicator on switch blinks rapidly, then loosen your finger, press the new one, finally test whether it can turn on/off the lamps.

Delete pairing for paired switch (Please use cautiously)



1. Press and hold the paired key (about 35s);
2. The status of the LED indicator changes as follows: Fast flash → off slow flash for 8 times off slow flash (then loosen your grip), and then press the panel key again to complete the code deletion operation.

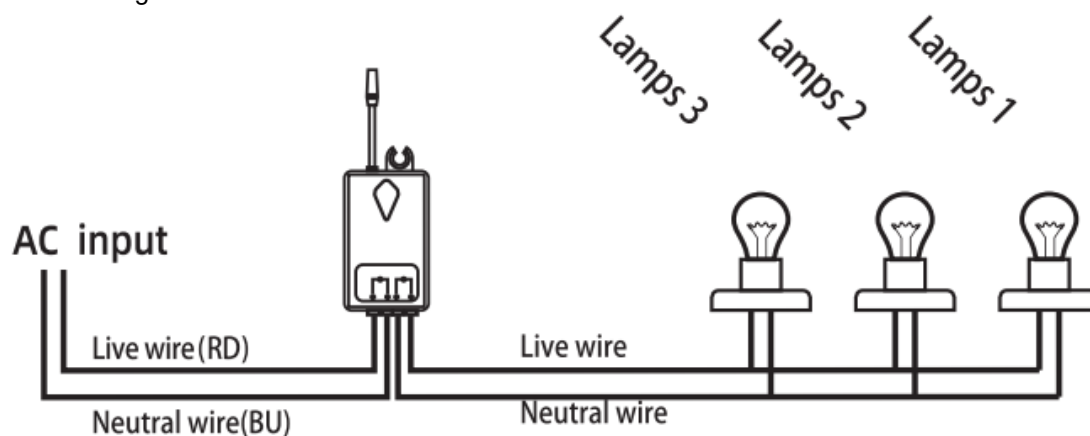
Delete pairing for paired receiver (Please use cautiously)



1. Press and hold the receiver button for about 10s
2. Receiver LED indicator status changes from rapid blinks to slow. Then loosen your finger.
3. Press the paired switch panel, light goes off and it won't control the lamp

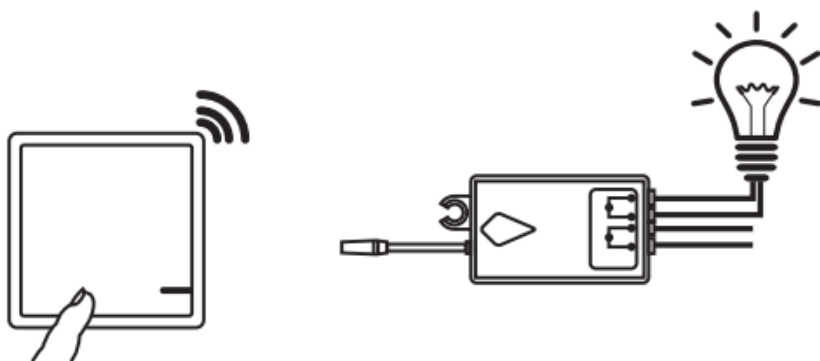
Application (Home, hotel, inn or Factory etc.)

- a. The integrated load of the wireless receiver is 1000W

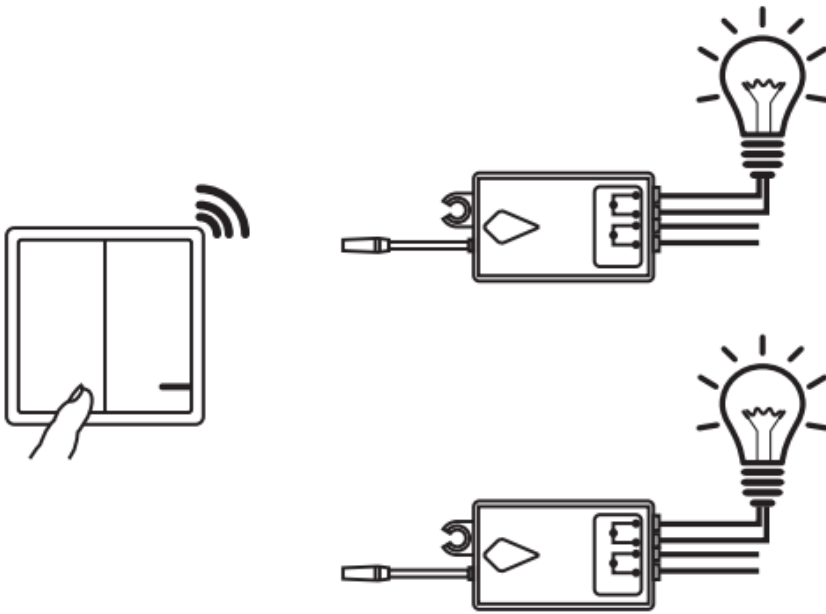


Lamps can be: LED lights, incandescent bulbs, exhaust fans, or WIFI devices etc

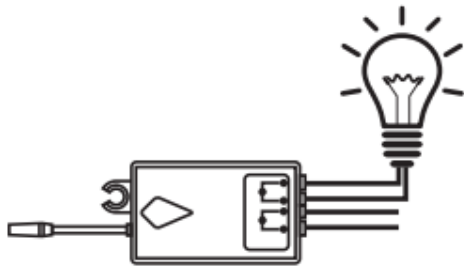
- b. A one-gang wireless switch controls a wireless receiver



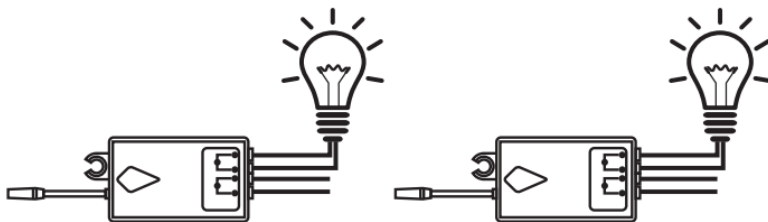
- c. A two-gang wireless switch controls 2 wireless receivers



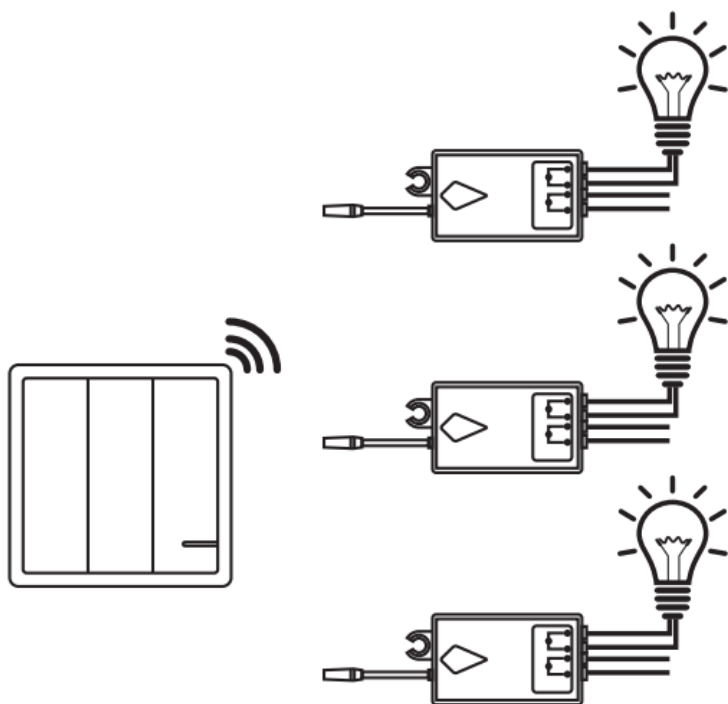
d. A receiver can be controlled by 8pcs of wireless switch panels at most.



e. Three two-gang wireless switches controls 2 wireless receivers.



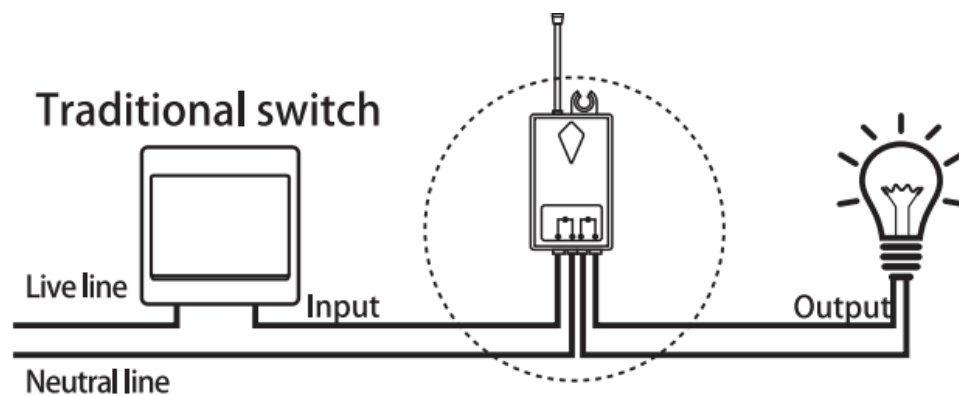
f. A three-gang wireless switch controls 3 wireless receivers



Set Open/Close state of the receiver in combination use with traditional switch

Note: The receiver is default in Close state when leaving the factory.

1. Power off electricity, install the receiver as the diagram, and distinguish live from neutral lines.
2. Power on electricity, then program receiver with the switch according to the Learning code Operation chapter



Wireless switch



Wiring diagram of add wireless switch to traditional switch.

What is the difference between Open and Close state?

In combination use with traditional switch, if the receiver is in "Open" state, turn on the traditional switch and the lamp lights up immediately; if the receiver is in "Close" state, turn on the traditional switch and you also need to press the wireless switch to turn on lights. No matter the receiver is in Open or Close state, only if turn on the traditional switch could you control lights using the wireless switch. Setting Open/Close state of receiver Press and hold setting button for 16s, loosen your finger when the indicator light is continuously bright. (During the 16s, the indicator light will change from quick flash to slower flash, after that, the indicator light will be off, then will be on.

Installation

Wireless Switch

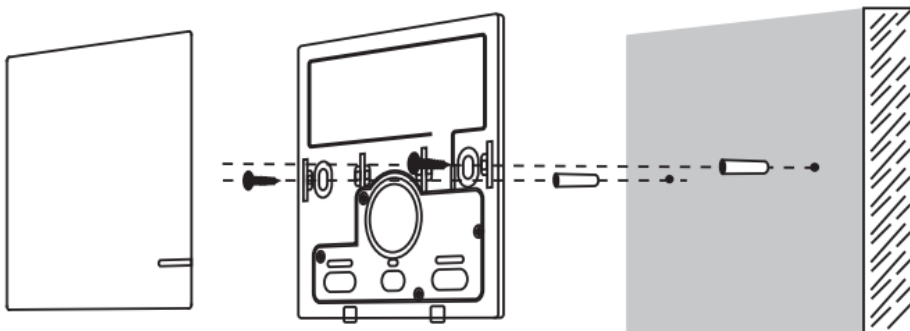
The switch can be surface mounted with screws or double-sided stickers. or set it on the table.

1. Install with Double-sided adhesive. (Included)

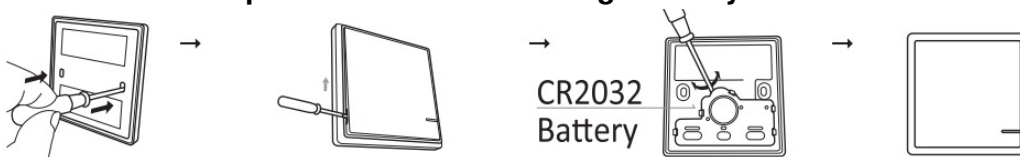


Pick up the area where you're going to place the switch, clean the surface with wet rag, post the adhesive rubber in the back of the switch, then attach the switch to the clean surface.

2. Install with screws (not included) First, take apart the button panel of the switch, Fix the switch base on the wall with two screws, then install the parts together.



The methods of open the switch and change battery

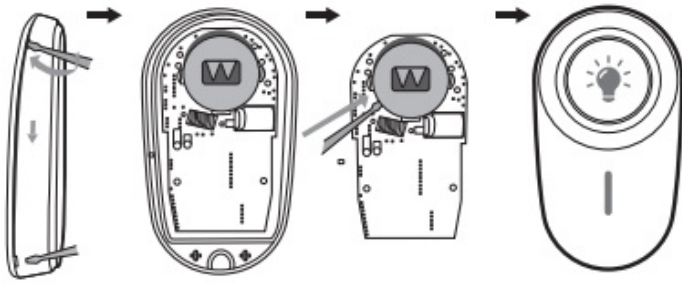


Method 1: Push the back hole forward with a small flat blade screwdriver to open the switch

Method 2: (if switch attached on the wall) Gently pry at the gap of the lower left with a small flat blade screwdriver, then slide up and down to expand and open

Change battery: Gently rotate at the position that icon shows with a flat-headed screwdriver and pry up, replace the CR2032 battery (ensure the positive and negative polarity of the battery is correct)

1. Pried at the gap with a small flat blade tool then slide up and down to open



- 2. Push out the battery with flat blade tool then replace CR2032 battery (ensure the positive and negative polarity of the battery is correct)
- 3. Install the panel and frame again.

CAUTION:


- 1. Please replace the battery strictly in accordance with the model requirements in user manual to avoid the risk of explosion;
- 2. Please put the replaced battery in a safe area and away from children’s reach to avoid burns and death risks caused by accidental ingestion;

Wireless Switch (Switch Panel)	Wireless Switch (Model: SW-CK1)
Product Size: 86x86x11(mm)	Product Size: 75x43x14 (mm)
Switching lifespan:600K times	Switching lifespan:300K times
Wireless Range:Indoor 30-100M Open Space 300-500 M	Wireless Range:Indoor 30-50M Open Space 200-400 M
Waterproof: IP66	
Working voltage: 3V (CR2032)	
Life of the battery: 6-8 years	
Working frequency: 433.92 MHz	
Standby current: 50.01 uA	
Fireproof level: VO	
Working temperature: -40 — +70 °C	
Working humidity: 0-90%	
Storage temperature: -40 — +80 °C	

Specifications of Wireless receiver

Product Size	43*23*23mm	Working frequency	433.92 MHz	
Switch times	400K times	Max current	10A	
Sensitivity	-116dB	Working voltage	AC 80-275V	
Working current	50.8W	Standby current	50.5W	
Temperature rise when working	℃isoc –	Material	Fireproof PC	
		Fireproof levelVO		
Signal light on the receiver	Red light	Package weight	32-35g	

Documents / Resources

	Thinkbee CK1 Wireless Light Switch Kit [pdf] User Manual CK1 Wireless Light Switch Kit, CK1, Wireless Light Switch Kit, Light Switch Kit, Switch Kit, Kit
---	--

References

- [User Manual](#)

Manuals+, Privacy Policy

This website is an independent publication and is neither affiliated with nor endorsed by any of the trademark owners. The "Bluetooth®" word mark and logos are registered trademarks owned by Bluetooth SIG, Inc. The "Wi-Fi®" word mark and logos are registered trademarks owned by the Wi-Fi Alliance. Any use of these marks on this website does not imply any affiliation with or endorsement.