



think smart MBA05 SIDEBBOARD User Manual

[Home](#) » [think smart](#) » think smart MBA05 SIDEBBOARD User Manual 

Contents

- 1 think smart MBA05 SIDEBBOARD product
- 2 Safety instructions
- 3 PARTS OVERVIEW
- 4 TOOLS REQUIRED
- 5 SCALE REQUIRED
- 6 PRODUCT VIEW
- 7 ASSEMBLING INSTRUCTIONS
- 8 Package Inside
- 9 Dimensions Required
- 10 How we fix it?
- 11 Wall Mounting Instructions
- 12 Cleaning and maintance
- 13 Documents / Resources
- 14 Related Posts

THINK SMART

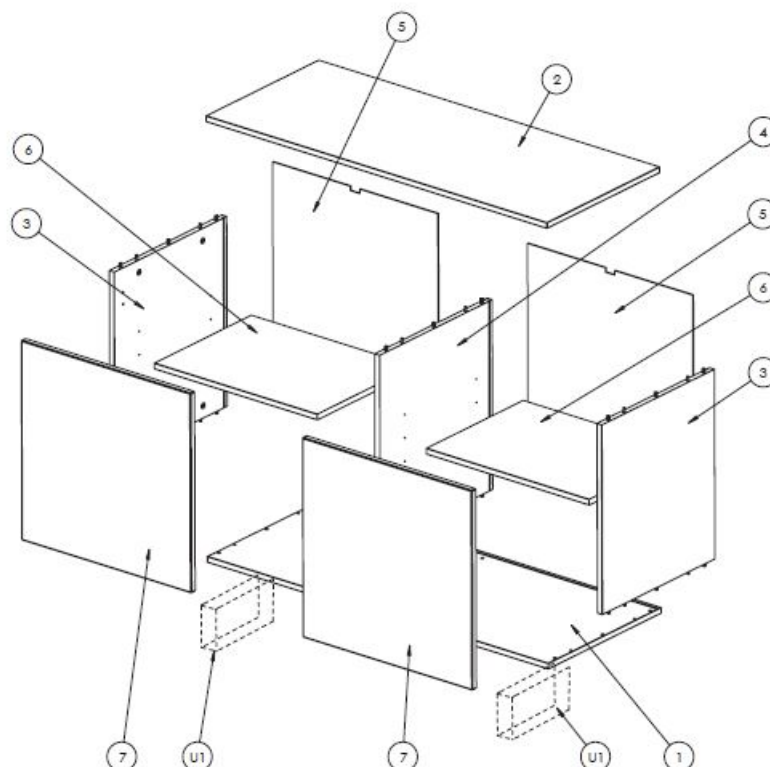
think smart MBA05 SIDEBBOARD product



Safety instructions

- Do not exceed the maximum loads specified.
- Otherwise, the furniture may sustain damage and be irreparable.
- Ensure that children do not put any small parts such as nuts, caps or the like in their mouth.
- They could swallow and choke on them.
- When assembling the product, please proceed with caution and comply with the assembly instructions.
- Assembly should be carried out by a qualified person, because wrong assembly may lead to the furniture toppling over and causing injury or damage.
- As wall materials vary, screws for fixing to wall are not included.
- For advice on suitable screw systems, contact your local specialized dealer.

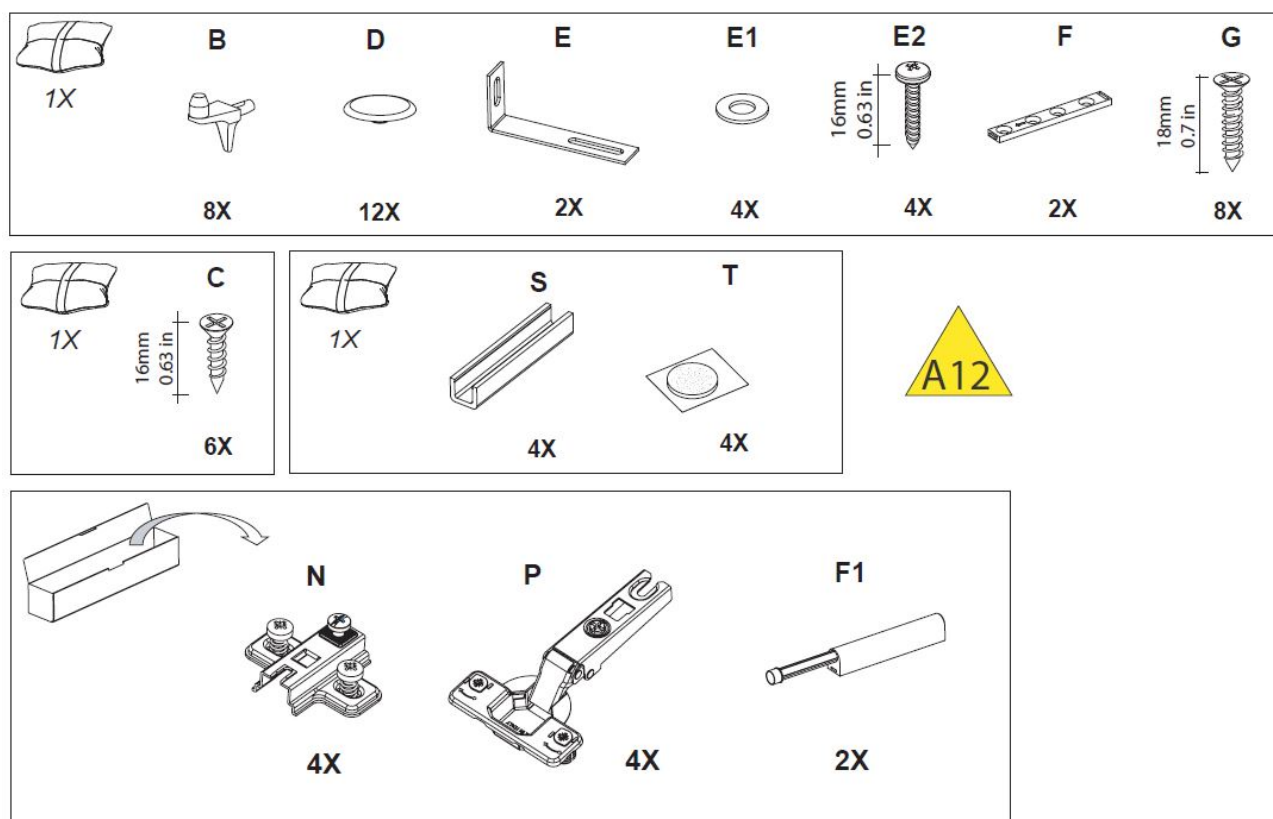
PARTS OVERVIEW



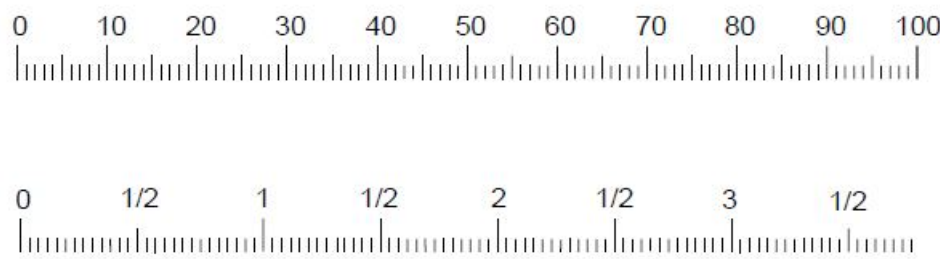
| nr | qt y | len gt h m m | len gt h i n c h | wi dt h m m | wi dt h i n c h | thi ck ne ss m m | thi ck ne ss i n c h | b ox nr |
|----|------|--------------------------|------------------------------------|-------------------------|-----------------------------------|---------------------------------|---|---------------|
| 1 | 1 | 10 99 | 43, 27 | 45 4 | 17, 87 | 16 | 0,6 3 | 2- 3 |
| 2 | 1 | 10 99 | 43, 27 | 45 4 | 17, 87 | 16 | 0,6 3 | 2- 3 |
| 3 | 2 | 51 9 | 20, 43 | 45 3 | 17, 83 | 16 | 0,6 3 | 1- 3 |
| 4 | 1 | 51 9 | 20, 43 | 45 3 | 17, 83 | 16 | 0,6 3 | 1- 3 |
| 5 | 2 | 53 2 | 20, 94 | 52 6 | 20, 71 | 3 | 0,1 2 | 2- 3 |
| 6 | 2 | 39 0 | 15, 35 | 52 5 | 20, 67 | 16 | 0,6 3 | 1- 3 |
| 7 | 3 | 54 7 | 21, 54 | 54 7 | 21, 54 | 16 | 0,6 3 | 3- 3 |
| U1 | 2 | | | | | | | 2- 2 |

A13

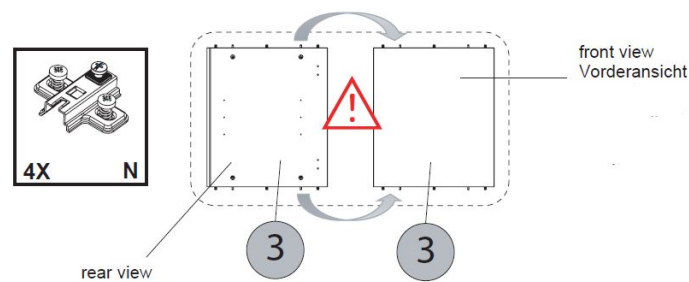
TOOLS REQUIRED



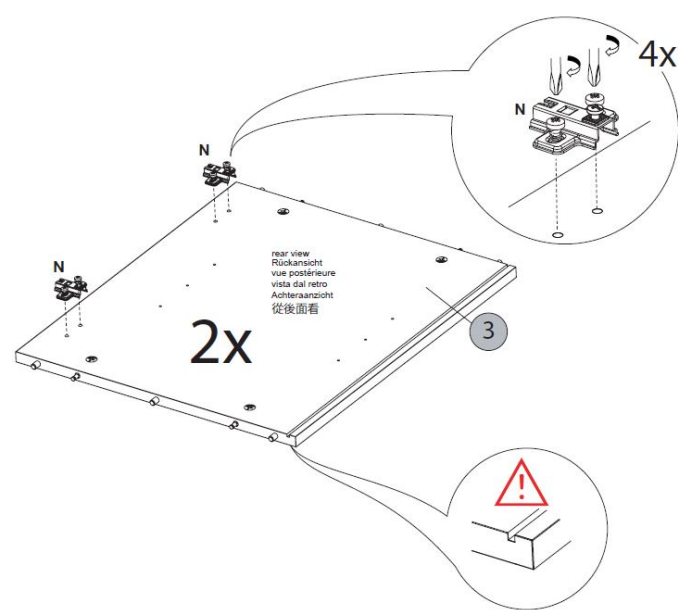
SCALE REQUIRED

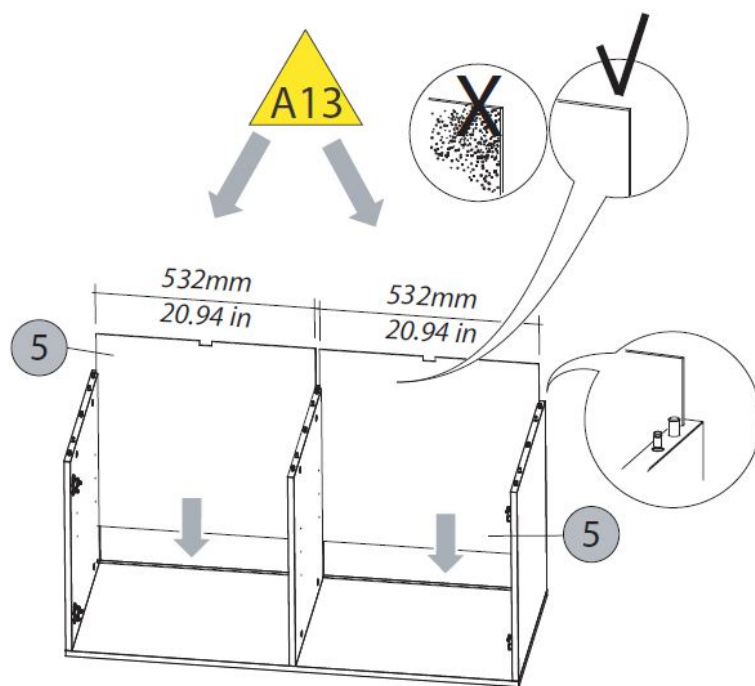
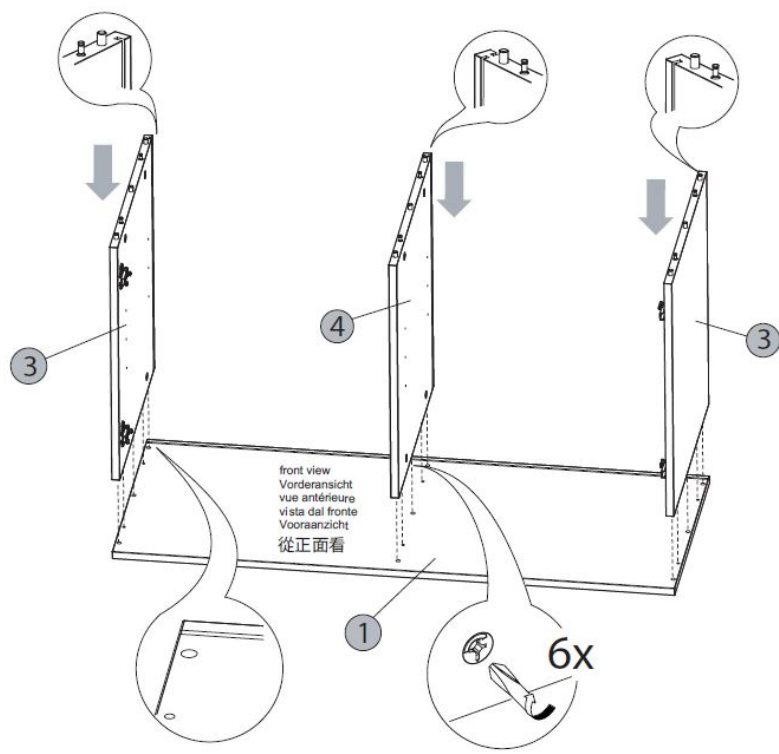


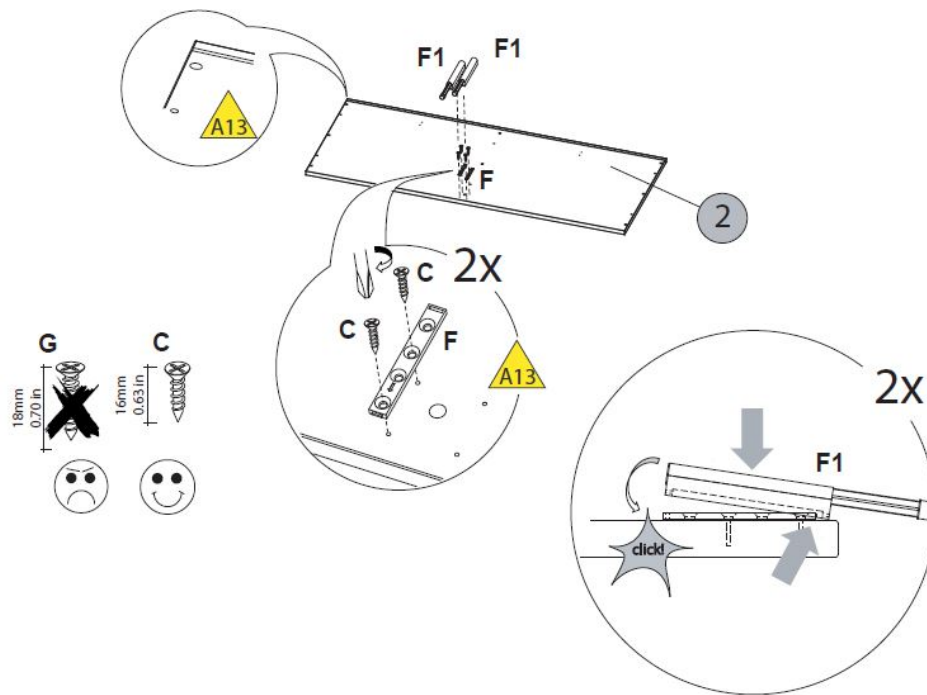
PRODUCT VIEW



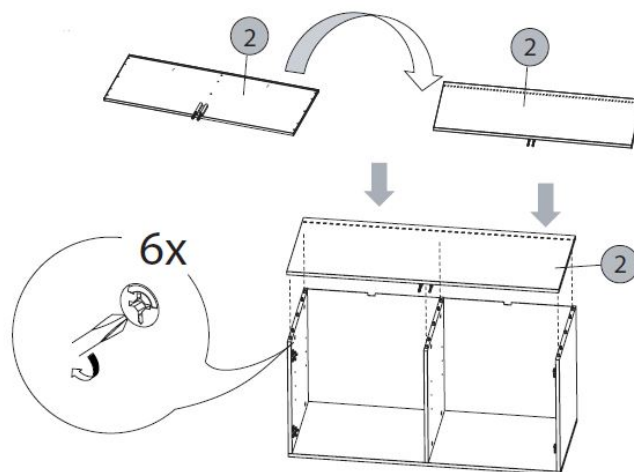
ASSEMBLING INSTRUCTIONS





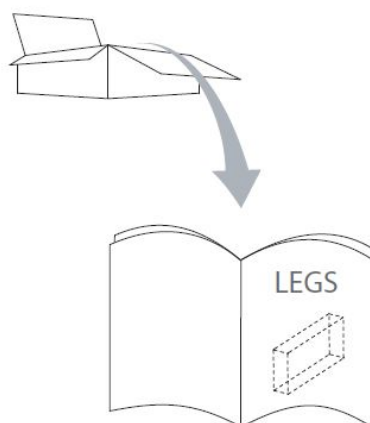


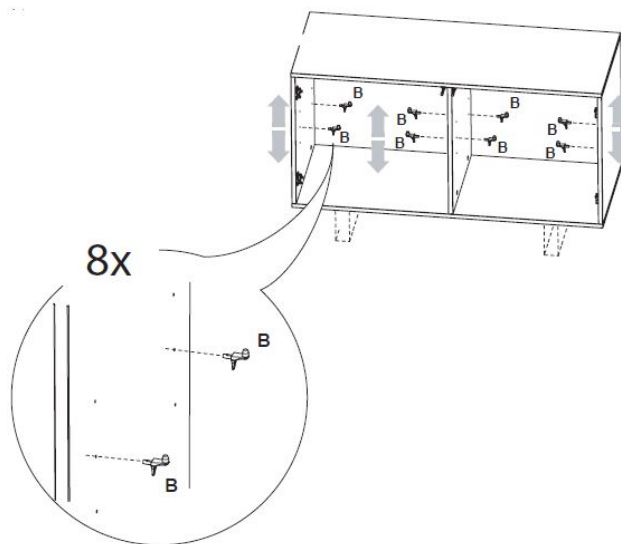
7



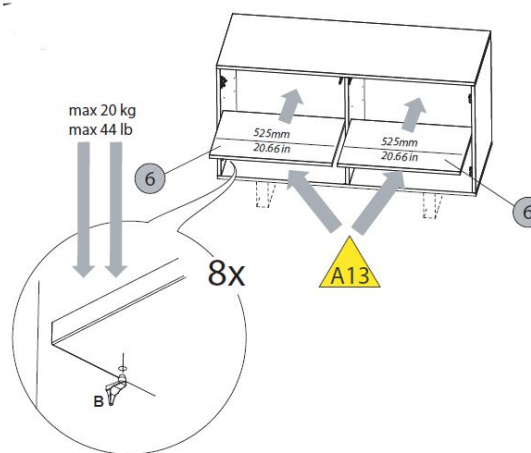
Package Inside

Cardboard box containing doors and legs.

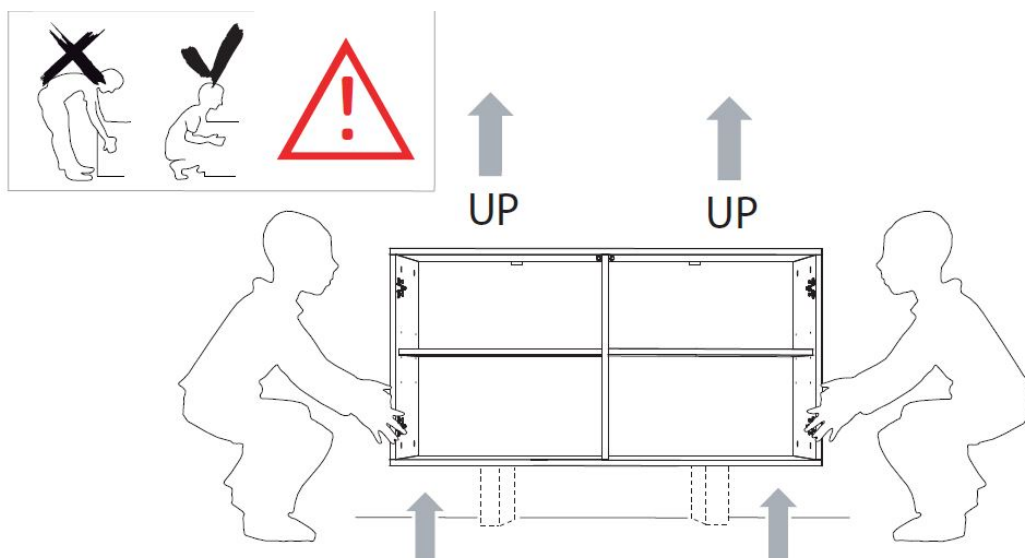




Dimensions Required

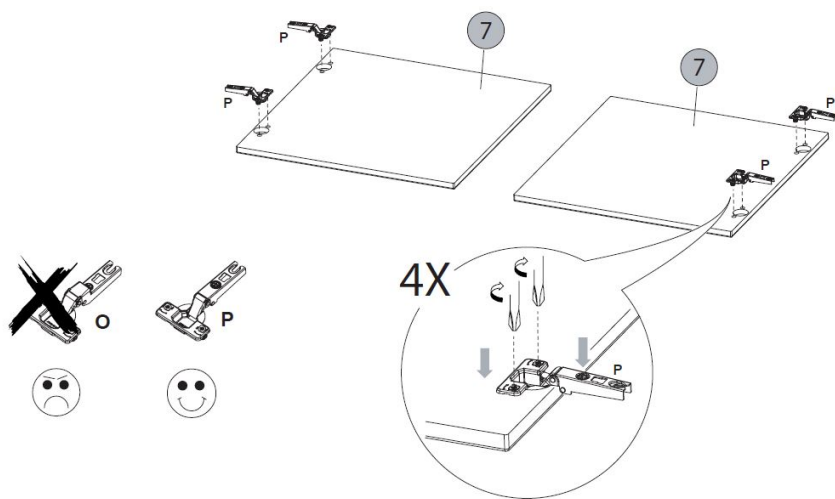
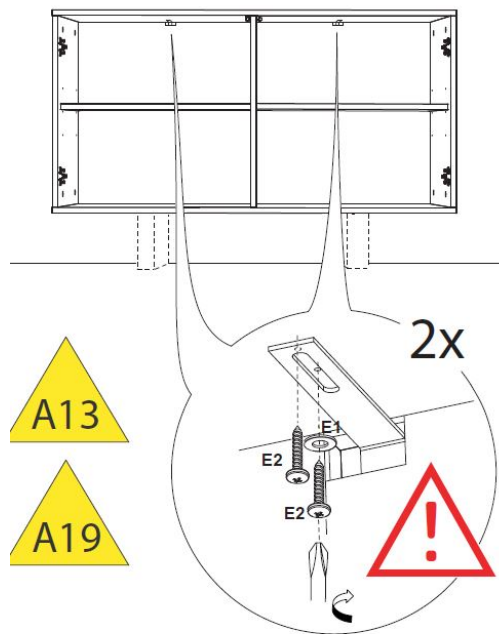
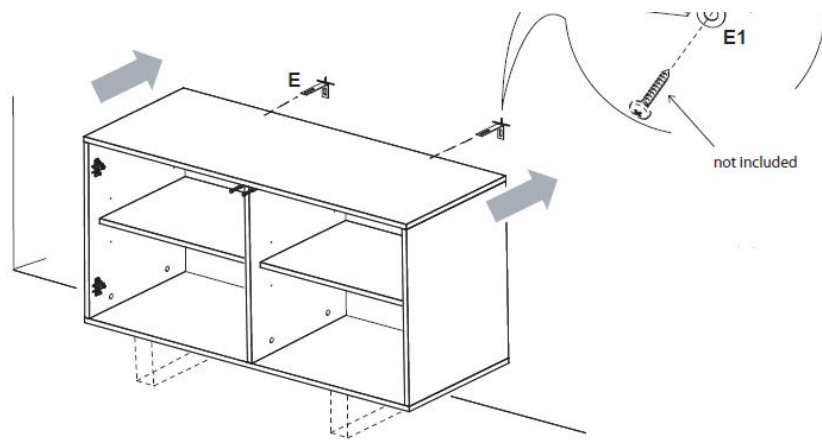


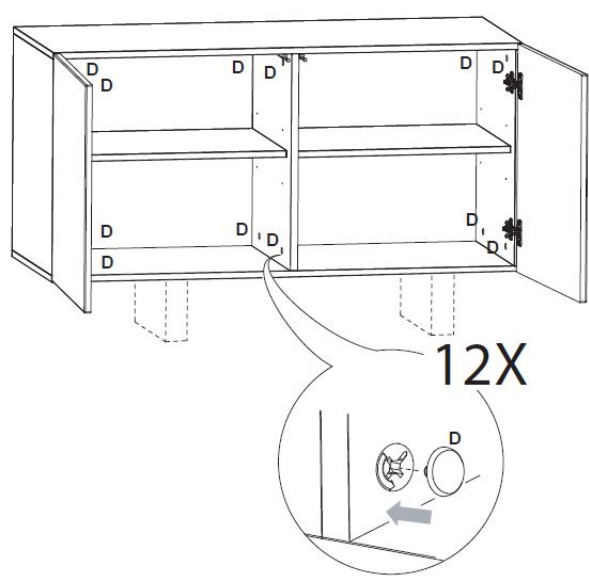
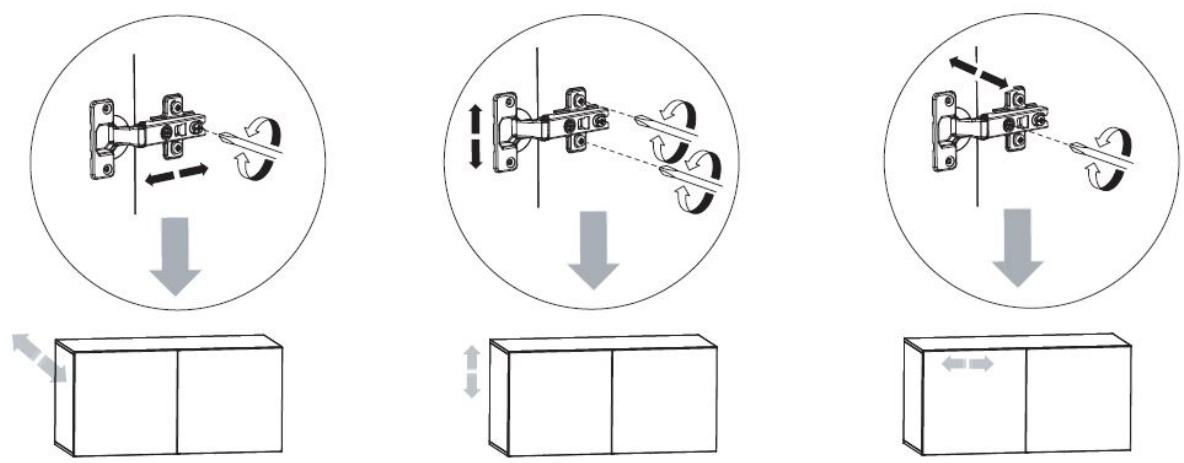
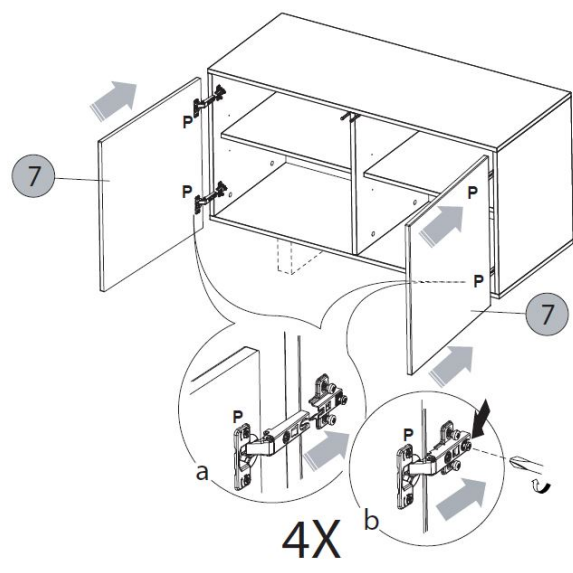
How we fix it?

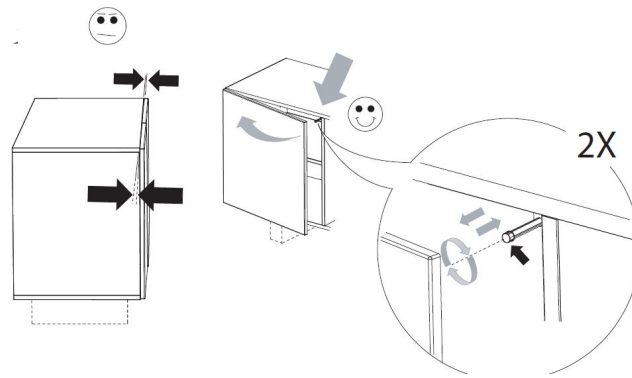


Always move carefully keeping the module raised off the ground in order not to damage the legs of the cabinet.

Wall Mounting Instructions

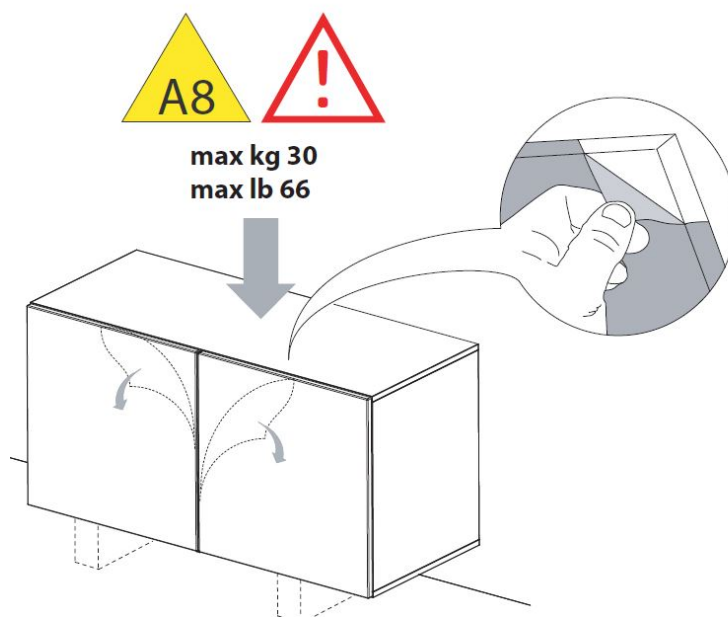






Cleaning and maintance

Please only clean with a duster or a damp cloth.



Documents / Resources

| | |
|--|--|
| | <p>think smart MBA05 SIDEBOARD [pdf] User Manual MBA05 SIDEBOARD</p> |
|--|--|