



ThermoTec IV18 Variable Speed Pool Circulation Pump Owner's Manual

[Home](#) » [ThermoTec](#) » ThermoTec IV18 Variable Speed Pool Circulation Pump Owner's Manual 

Contents

- [1 IV18 Variable Speed Pool Circulation Pump](#)
- [2 THERMOTEC VARIABLE SPEED CIRCULATION PUMP – IV23](#)
- [3 Inverter Technology](#)
- [4 Up to 12 Times Energy Saving](#)
- [5 Noise Down to 36dB](#)
- [6 Intuitive Touch Screen Controller](#)
- [7 Other Features](#)
- [8 Technical Parameter](#)
- [9 Performance Curve](#)
- [10 Overall Dimension](#)
- [11 Product Usage Instructions](#)
- [12 Documents / Resources](#)
- [13 Related Posts](#)



IV18 Variable Speed Pool Circulation Pump



THERMOTEC VARIABLE SPEED CIRCULATION PUMP – IV23

The THERMOTEC IV23 Variable Speed Circulation Pump utilizes inverter technology to precisely control the motor speed. This allows the pump to adjust its capacity based on the filtration demand, resulting in energy efficiency and quiet operation. The pump is equipped with Aquagem inverter technology, which extends its lifespan.

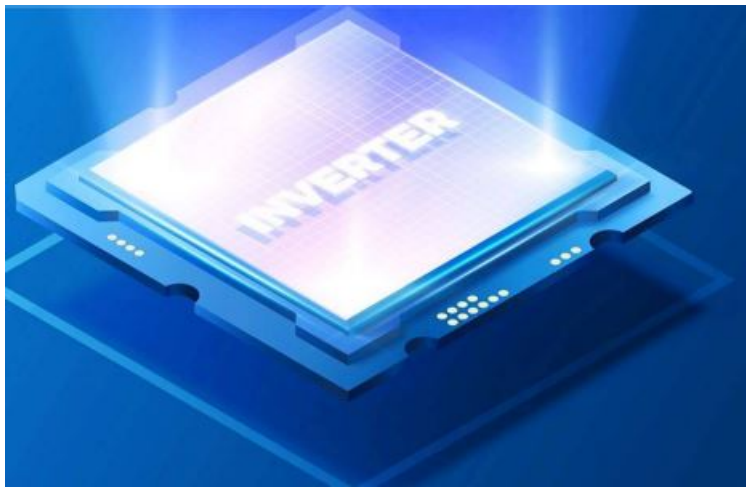
The IV23 pump offers up to 12 times energy saving compared to single-speed pumps. In a year, it can save up to 7446 kWh of energy consumption, while a single-speed pump consumes 8760 kWh. This significant energy saving can lead to reduced electricity bills.

The IV23 pump operates at a noise level as low as 36dB, making it whisper quiet. Its noise level is comparable to normal breathing or a quiet bedroom. This ensures a peaceful and comfortable pool environment.

The intuitive touchscreen controller of the IV23 pump allows for easy operation. It features 4 timers for daily operation, power consumption reading, and one-click backwash function. The pump also offers other features such as a special volute hydraulic design for increased efficiency and extreme silence performance, a superior PMS motor for maximum energy efficiency and reliability, and optional external control and Wi-Fi capabilities for remote control.

Inverter Technology

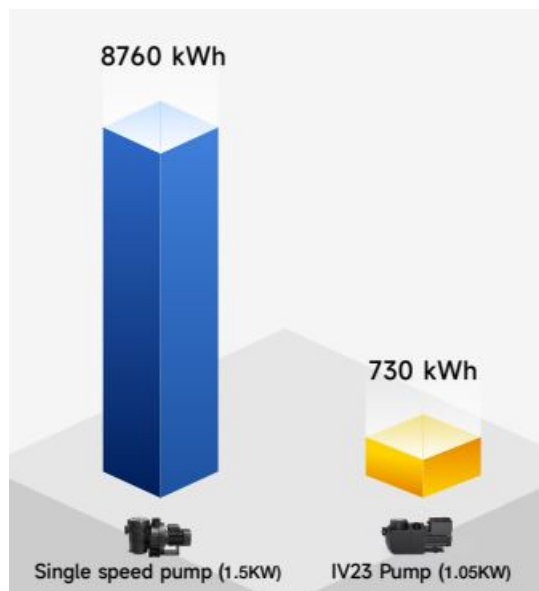
Thanks to inverter technology, the motor speed can be controlled precisely by 1 round. When users need a backwash, the pump can run at 100% capacity; For daily filtration demand, which needs small flow rate, the pump can run at low capacity, which is extremely quiet and energy efficient; The life span is also longer due to Aquagem inverter tech.



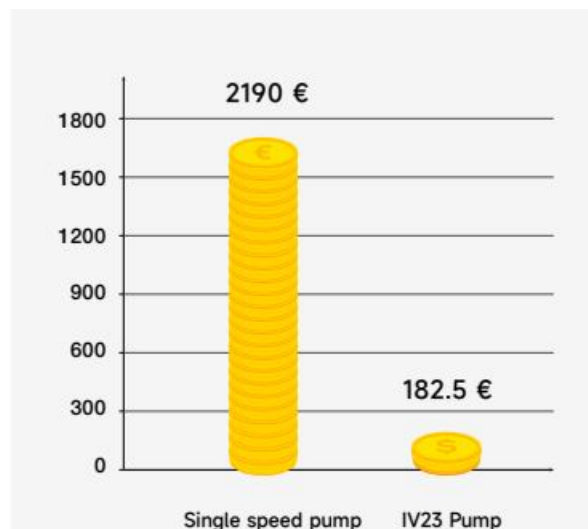
Up to 12 Times Energy Saving

One year save ener 7gy k446 Wh

Energy consumption comparison

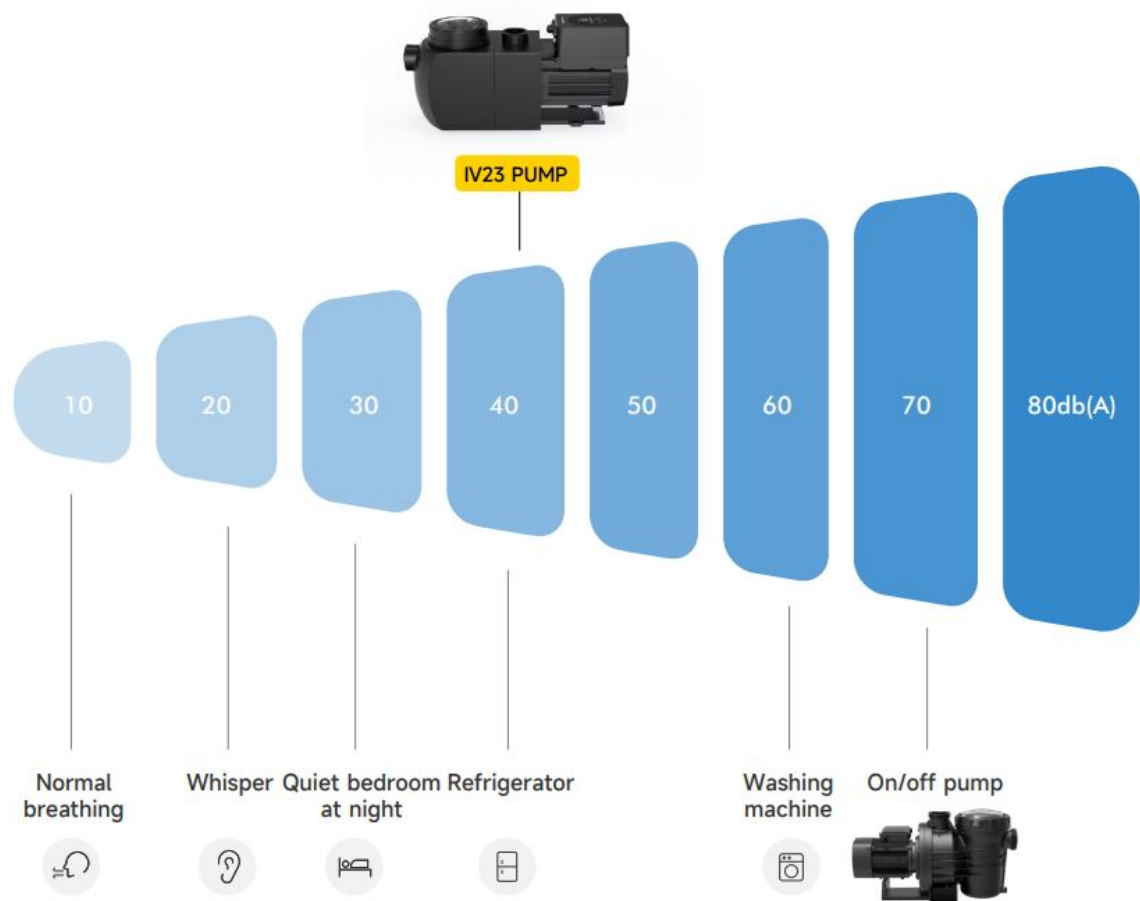


Electricity bill comparison



Assumption: A 4 season pool size averagely run 16 hours in 365 days. Electricity price is €0.25/kwh.

Noise Down to 36dB



Intuitive Touch Screen Controller

- 4 Timers for daily operation
- Running capacity from 30%~100%
- Power consumption reading
- One-click backwash

Other Features

- **Special Volute hydraulic design**
For increased efficiency and to reach extreme silence performance
- **Superior PMS motor**
Delivers maximum energy efficiency and more reliable
- **External control optional**
To control your pump anywhere anytime
- **WIFI optional**
The pump can be controlled at anytime, anywhere

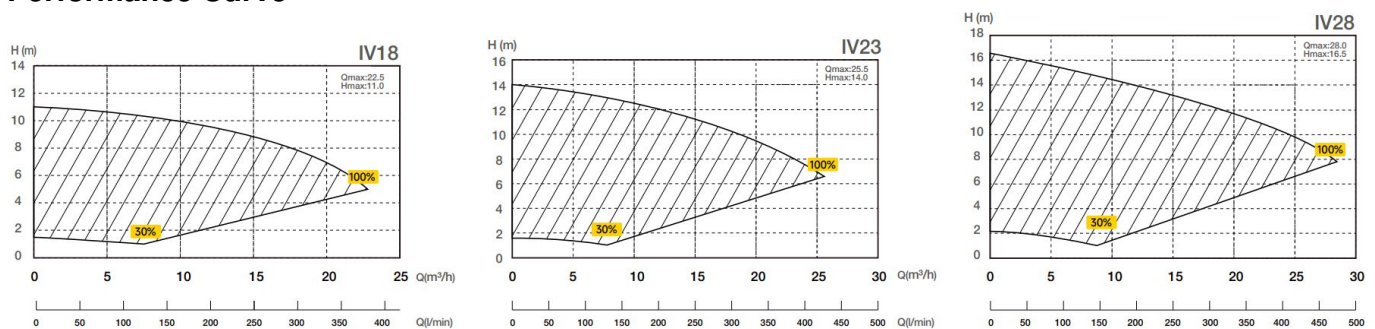
Technical Parameter

- Model: IV23
- P1 (kW): 1.10

- Voltage (V/Hz): 220~240/50/60
- Hmax (m): 14.0

Model	Advised pool volume (m³)	P1 (kW)	Voltage (V/Hz)	Qmax (m³/h)	Hmax (m)	Circulation Flow (m³/h) Max	
						8m	10m
IV18	30~50	0.77	220~240/ 50/60	22.5	11.0	18.0	10.0
IV23	40~70	1.10		25.5	14.0	23.0	18.5
IV28	50~80	1.40		28.0	16.5	28.0	24.5

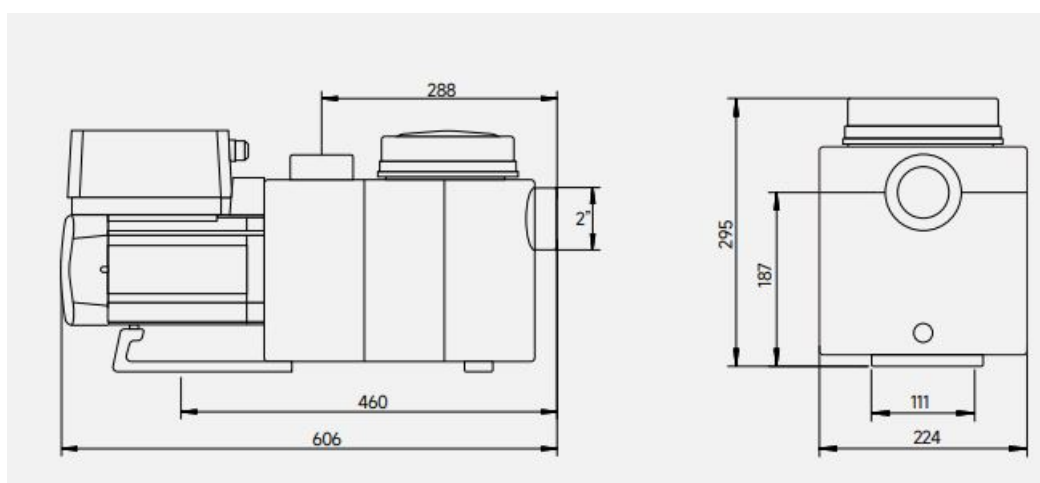
Performance Curve



Overall Dimension

- Packing Dimension (mm): 648*270*340

Model	Packing Dimension (mm)
IV18 / IV23 / IV28	648*270*340



Product Usage Instructions

1. Ensure that the pump is properly installed and connected to the pool system.
2. Connect the pump to a power source with the specified voltage (220~240V/50/60Hz).
3. Use the intuitive touch screen controller to set the desired operation mode and timers for daily operation.

4. Adjust the running capacity of the pump based on the filtration demand. For backwash, set the pump to run at 100% capacity. For daily filtration, set it to run at a lower capacity for energy efficiency and quieter operation.
5. Monitor the power consumption reading on the touch screen controller to track energy usage.
6. Use the one-click backwash function when needed.
7. If desired, utilize the optional external control or Wi-Fi capabilities for remote control of the pump.

Documents / Resources



[ThermoTec IV18 Variable Speed Pool Circulation Pump](#) [pdf] Owner's Manual
IV18, IV23, IV28, IV18 Variable Speed Pool Circulation Pump, IV18, Variable Speed Pool Circulation Pump, Speed Pool Circulation Pump, Circulation Pump, Pump

[Manuals+.](#)