



ThermElc TE-03 ETH Temperature Humidity Data Logger User Manual

[Home](#) » [ThermELC](#) » ThermElc TE-03 ETH Temperature Humidity Data Logger User Manual 

ThermElc

TE-03 TH
Temperature and Humidity
Data Logger
User Manual

Contents

- [1 Product Introductions](#)
- [2 Main Feature](#)
- [3 Quick Start](#)
- [4 Configuration of ThermElc TE-03 TH](#)
- [5 Operation Functions](#)
- [6 Battery Replacement](#)
- [7 Documents / Resources](#)
 - [7.1 References](#)
- [8 Related Posts](#)

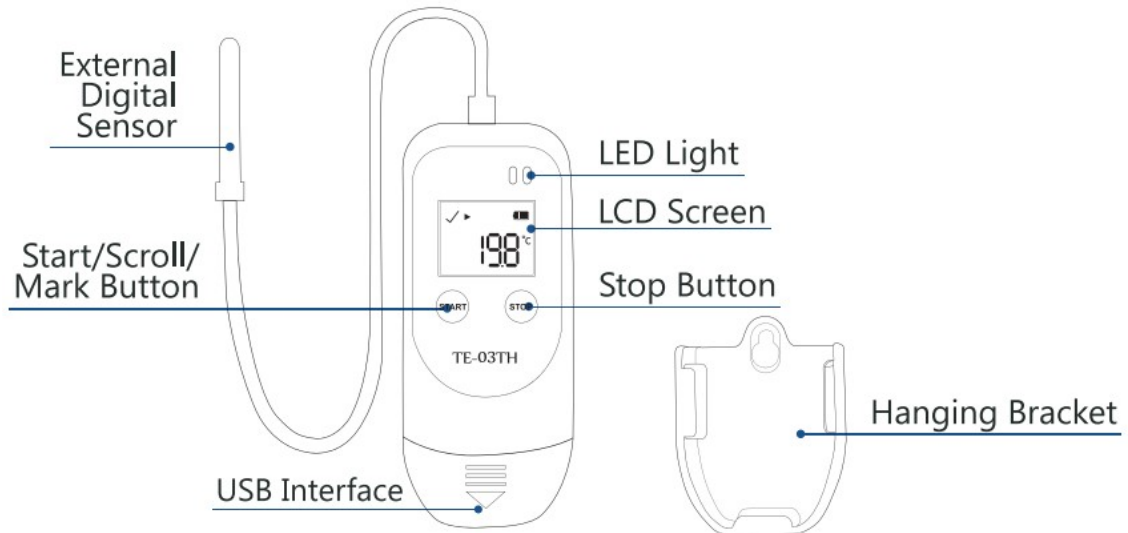
Product Introductions

ThermElc TE-03 TH is used for monitoring temperature and humidity of the sensitive goods during storage and transportation. After the recording is finished, the ThermElc TE-03 TH is connected to any USB port and automatically generates a PDF & CSV report with the temperature and humidity logging results. No additional software is required to read out the ThermElc TE-03 TH.

Main Feature

- Multiple use temperature & humidity logger

- External sensor and bracket
- Auto generates PDF reports
- Auto generates CSV reports
- Logging of 34560 points
- Recording Interval of 10 seconds to 99 hours
- No special device driver required
- Temperature and humidity over-limit alarm



Quick Start

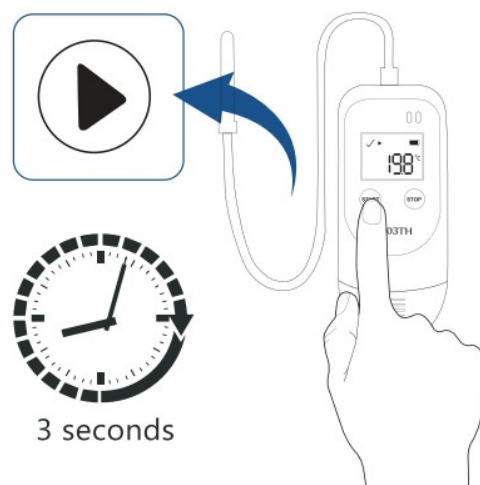
Quick Start ThermElc TE-03 ETH

1. Software Download

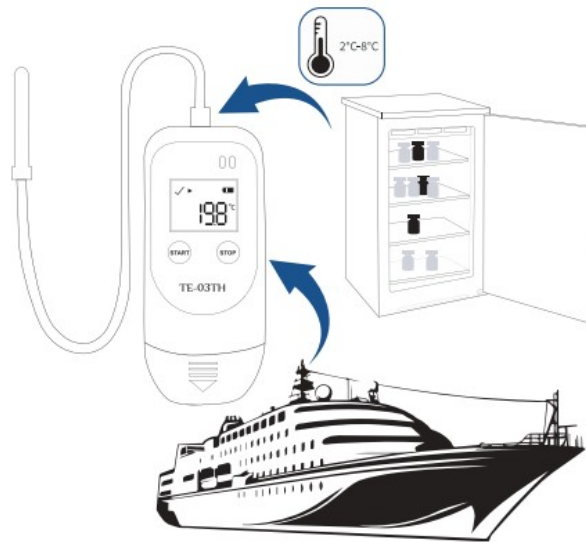


<https://www.thermelc.com/pages/download>

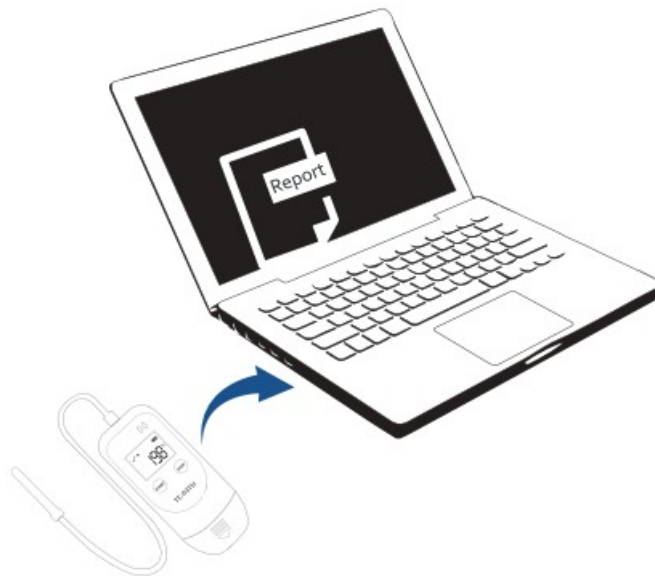
2. Press start 3 seconds



3. Measure Monitoring



4. Read USB



5. Report



Auto PDF. CSV Report Data & Graphic Comparison Available

6. Helps



<https://www.thermelc.com/pages/contact-us>

Configuration of ThermElc TE-03 TH

Temperature Management Software

Device Report Parameter Database Database Settings About Help Exit

Run as administrator

Device Information

Device ID: TZ2022102802

Device Time: 02/15/2023 08:28:25

System Time: 02/22/2023 07:34:31

Time Zone: UTC : 00

Temperature Scale: °C °F

LCD: Always bright Close after 01 M 00 S

Temperature Calibration: 0 [-5-5]°C

Humidity Calibration: 0 [-20-20]°C

Logging

Log Interval: 00 H 00 m 10 s

Start Delay: 00 H 00 m 00 s

Stop Mode: ☒ Button Stop

Time Format: MM/DD/YY HH:MM:SS

Graphic Format: Combine Temp & RH

Start Mode: ☒ Button ☐ Timed

Time Start: 2018 Y 01 M 01 D

Time: 00 H 00 M 00 S

Repeated Start: ☐ Enable

PDF Temporarily Stopped: ☐ Enable

Alarm

Temperature MIN: 2 [-40,85]°C

Temperature MAX: 8

More settings for temperature alarm

Humidity MIN: 40 [0-100]°C

Humidity MAX: 80

More settings for humidity alarm

Description
Temperature and Humidity Recorder

Template files: Open file Save file Delete Read Save Default

The device can be configured using the free data management software.

1	Time zone:	UTC
2	Temperature scales:	°C /°F
3	Screen display:	Always on/ Timed
4	Start delays:	0/timed (30min default)
5	Start delays:	0/ timed
6	Stop mode:	Press button/ disabled
7	Start mode:	Press button or Timed
8	Temperature and humidity over-limit alarm	
9	Alarm setting:	Upper Limit and Lower Limit
140	FDA Module:	To enable in settings

Operation Functions

1. Start Recording

Press and hold the START button for approximately 3sec. The OK light is on and the (▶) or (WAIT) on screen indicates the logger is started.

2. Mark

When the device is recording, press and hold the START button for more than 3sec, and the screen will switch to the "MARK" interface. The number of MARK' will increase by one, indicating data was marked successfully.

3. Stop Recording

Press and hold the STOP button for more than 3sec until the STOP (■) symbol displays on the screen, indicating stopping recording successfully.

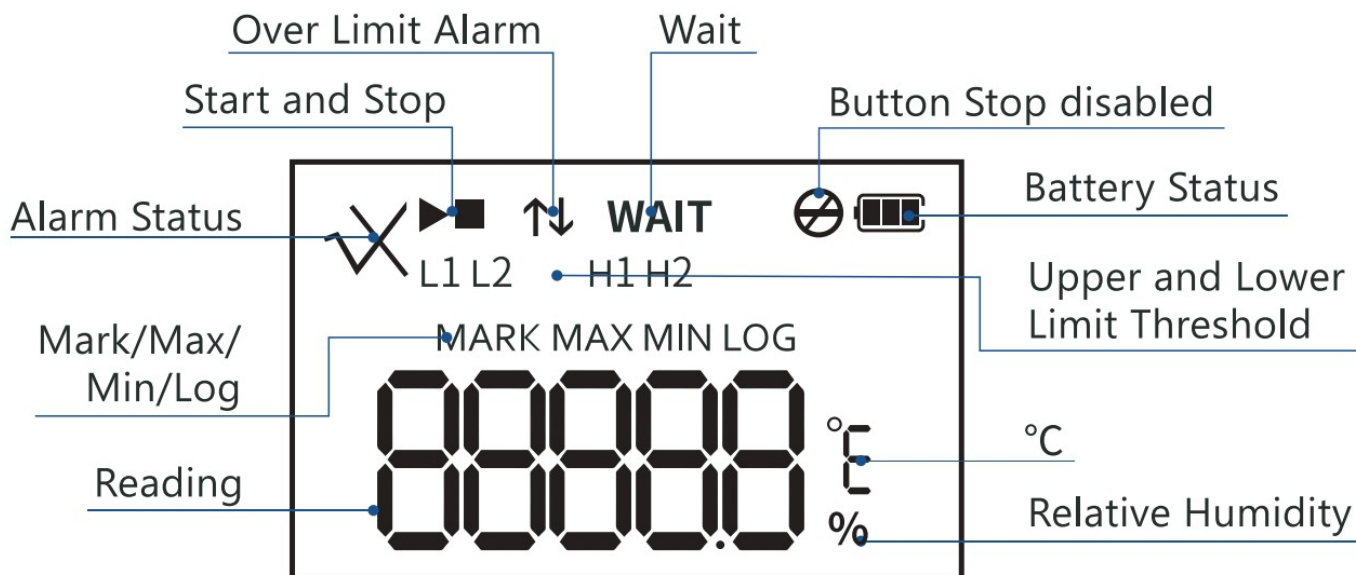
4. Switch the display

Shortly press START button to switch to different display interface. The interfaces shown in sequence are respectively: Real-time Temperature > Real-time Humidity > LOG > MARK > Temperature Upper Limit > Temperature Lower Limit > Humidity Upper Limit > Humidity Lower Limit.

5. Get Report

Connect the data logger to PC via USB, and it will auto-generate PDF and CSV reports.


LCD Display Descriptio



▶	Data logger is recording
■	Data logger has stopped recording
WAIT	Data logger is in Start Delay status.
✓	Temperature and Humidity is within the limited range
x&↑ H1/H2	Measured value exceeds its upper limit
x&↓ H1/H2	Measured value exceeds its lower limit

Battery Replacement




Technical Support	
	
https://thermelc.com/pages/support	https://www.youtube.com/channel/t

ThermElc

<https://www.thermelc.com>
sales@thermelc.com
+44 (0)207 1939 488

Documents / Resources

	ThermElc TE-03 ETH Temperature Humidity Data Logger [pdf] User Manual TE-03 ETH Temperature Humidity Data Logger, TE-03 ETH, Temperature Humidity Data Logge r, Humidity Data Logger, Data, Logger, Logger TE-03 ETH
---	--

References

- [User Manual](#)