



ThermElc TE-02 Temperature Data Logger User Manual

[Home](#) » [ThermELC](#) » ThermElc TE-02 Temperature Data Logger User Manual 

Contents

- 1 ThermElc TE-02 Temperature Data Logger
- 2 Product Introductions
- 3 Main feature
- 4 Quick start
- 5 Configuration of a ThermElc TE-02
- 6 Operation Functions
- 7 LCD Display Instructions
- 8 Battery Replacement
- 9 Technical Specifications
- 10 Documents / Resources
 - 10.1 References
- 11 Related Posts



ThermElc TE-02 Temperature Data Logger

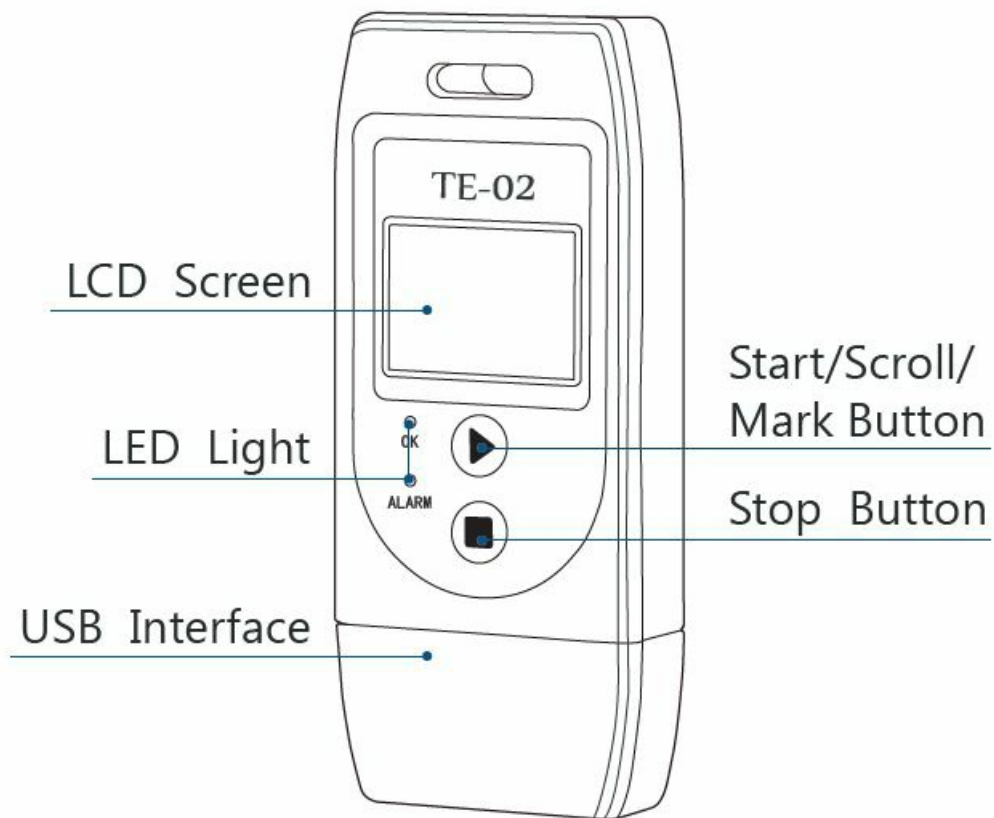


Product Introductions

ThermElc TE-02 is used for monitoring temperature of the sensitive goods during storage and transportation. After the recording is finished, the ThermElc TE-02 is connected to any USB port and automatically generates a PDF report with the temperature logging results. No additional software is required to read out the ThermElc TE-02.

Main feature

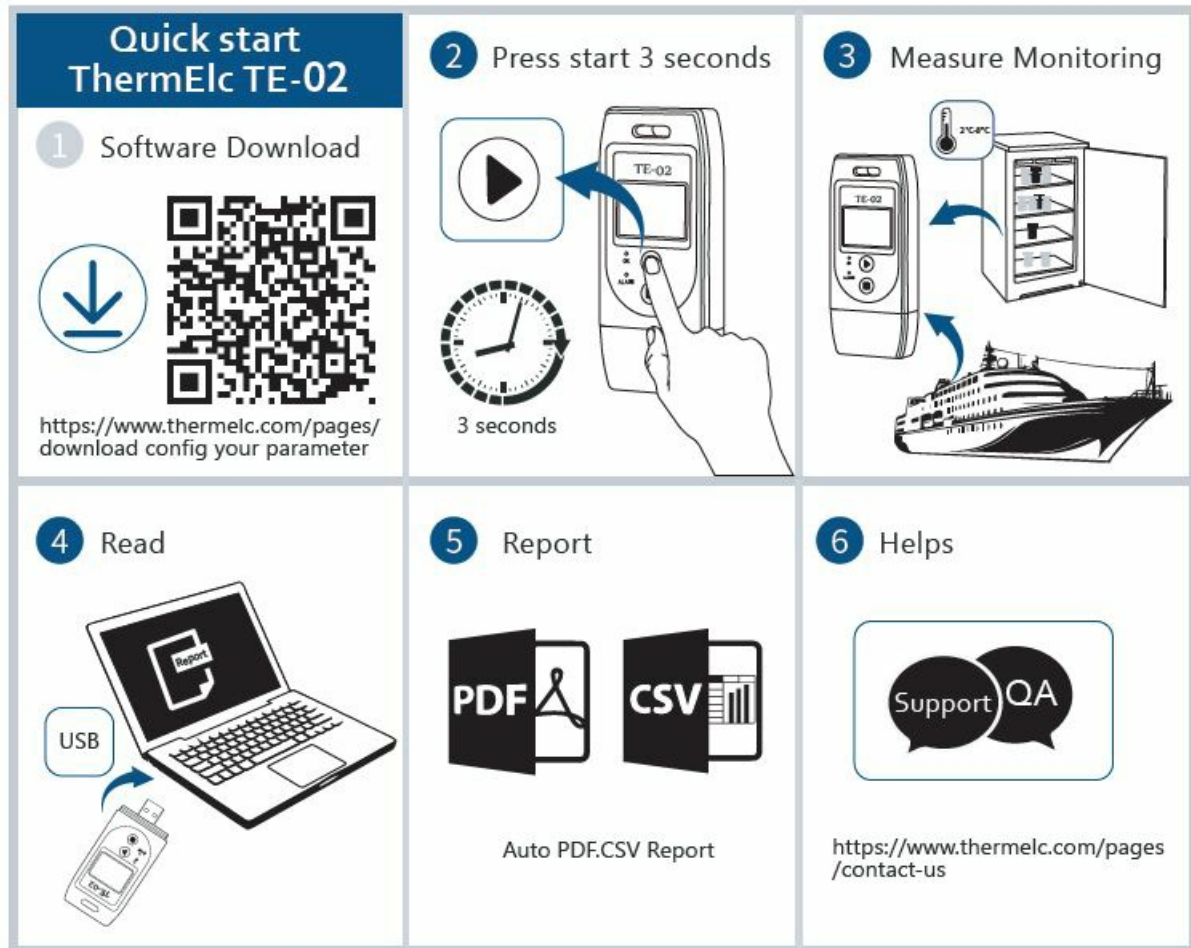
- Multiple use logger
- Auto PDF logger
- Auto generate CSV reports
- Logging of 32,000 values
- Interval of 10 seconds to 18 hours
- No special device driver required
- MKT alarm and Temperature Alarm



PLEASE NOTE:

After the device is configured for the first time or after re-configuration, please leave the device in an open environment over 30 minutes. This will ensure the device is calibrated with the accurate current temperature

Quick start



Software Download

<https://www.thermelc.com/pages/download> config your parameter

Helps <https://www.thermelc.com/pages/contact-us>

Configuration of a ThermElc TE-02

The device can be configured using the free Data Management software.

- Time zone: UTC
- Temperature scales: °C /°F
- Screen display: Always on / Timed
- Log interval: 10 to 18 hours
- Start delays: 0/ timed
- Stop mode: Press button/ disabled
- Time format: DD/MM/YY or MM/DD/YY
- Start mode: Press button or Timed
- Alarm setting: Upper Limit and Lower Limit
- Description: Your reference which will appear on the report

Operation Functions

1. Start Recording

Press and hold the PLAY (▶) button for approximately 3sec. The 'OK' light is on and the (▶) or (WAIT) indicates the logger is started.

2. Mark

When the device is recording, press and hold the PLAY (▶) button for more than 3sec, and the screen will switch to the 'MARK' interface. The number of 'MARK' will increase by one, indicating data was marked successfully.

(**Note:** One record interval can mark one time only, the logger can mark 6 times in one recording trip. Under the status of start delay, the mark operation is disabled.)

3. Stop Recording

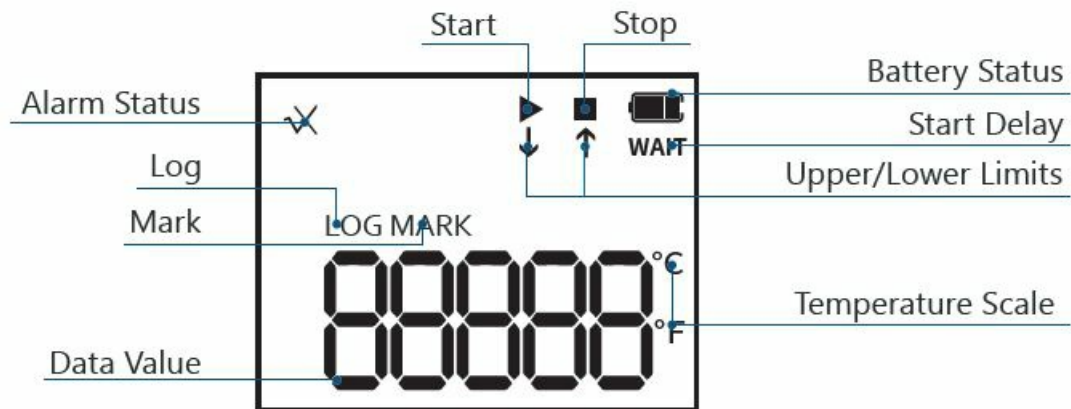
Press and hold the STOP (■) button for more than 3sec until the 'ALARM' light is on, and the STOP (■) symbol displays on the screen, indicating stopping recording successfully. (Note: If the logger is stopped during the status of start delay, a PDF report is generated when inserted into PC but without data.) During the normal recording process, press PLAY (▶) to switch to a different display interface.

4. The interfaces shown in sequence are respectively: Realtime Temperature > LOG > MARK > Temperature Upper Limit > Temperature Lower Limit.

5. Get Report

Connect logger to PC via USB, and it will auto-generate PDF and CSV file

LCD Display Instructions



▶	Data logger is recording
■	Data logger has stopped recording
WAIT	Data logger is in Start Delay status
✓	Temperature is within the limited range
x and ↑	Measured temperature exceeds its upper limit
x and ↓	Measured temperature exceeds its lower limit

Battery Replacement



Technical Specifications

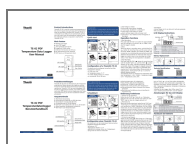


Youtube



<https://www.thermelc.com> sales@thermelc.com +44 (0)207 1939 488

Documents / Resources



[ThermElc TE-02 Temperature Data Logger](#) [pdf] User Manual
TE-02, TE-02 Temperature Data Logger, Temperature Data Logger, Data Logger, Logger

References

- [User Manual](#)

Manuals+.