



ThermELC TE-02 PRO Temperatuer and Humidity Data Logger User Manual

[Home](#) » [ThermELC](#) » ThermELC TE-02 PRO Temperatuer and Humidity Data Logger User Manual 

Therm^{ELC}

TE-02 PROH
Temperature and Humidity
Data Logger
User Manual



Contents

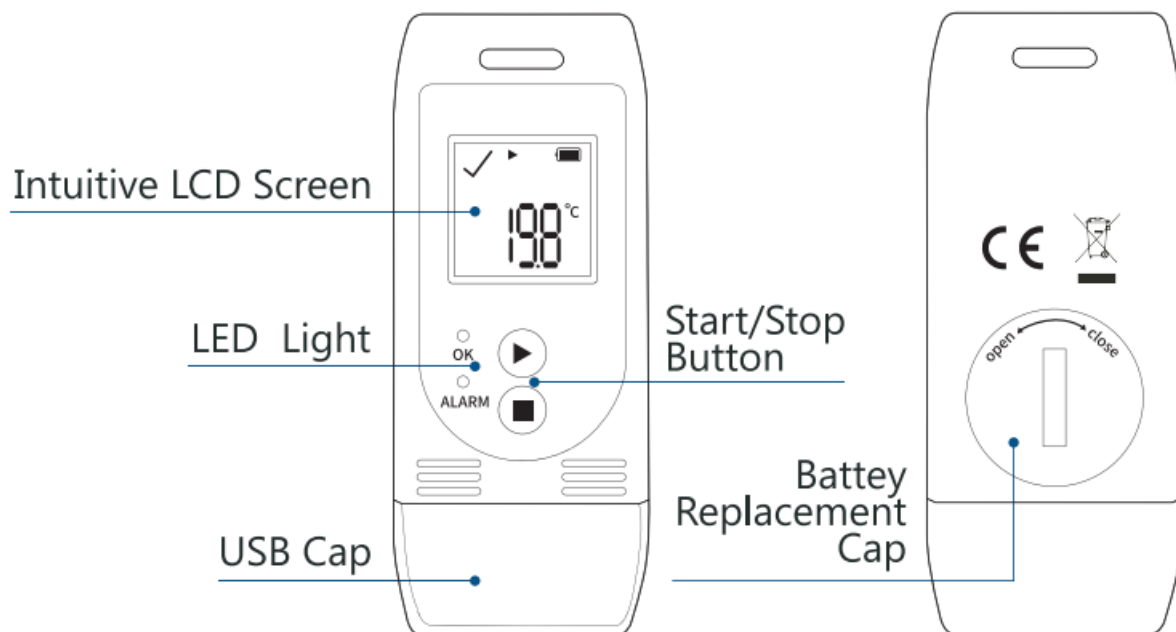
- 1 Product Introductions
- 2 Main Feature
- 3 Specification of ThermElc
- 4 Quick Start
- 5 Operation Functions
- 6 LCD Display Instructions
- 7 Battery Replacement
- 8 Documents / Resources
- 8.1 References

Product Introductions

ThermElc TE-02 PRO H is used for monitoring temperature and humidity of the sensitive goods during storage and transportation. TE-02 Pro H is integrated with USB & Plug-N-Play features for auto-generating secured PDF & CSV report without requiring additional Hardware (cable/interface) or software. TE-02 Pro H dataloggers are equipped with highly precise sensor with accuracy of $\pm 0.5^{\circ}\text{C}$ for entire range of -30°C to $+60^{\circ}\text{C}$ and $\pm 3\% \text{ rH}$

Main Feature

- Multiple use temperature & humidity logger
- Auto generates PDF reports
- Auto generates CSV reports
- Logging of 32000 points
- No special device driver required
- Temperature and humidity over-limit alarm



Specification of ThermElc

TE-02 PRO H

Type	Reusable / Multiple Use	Dimension	89 mm x 36 mm x 16 mm
Measurement Range	-30°C to +60°C	Weight	approx. 30 Grams
Accuracy	±0.5°C(-30°C to +60°C)	Certifications	EI112830, CE
Humidity Range	0% to 100% rH	Validation Certificate	Hard Copy Included
Humidity Accuracy	±3% rH	Report	Self-Generated PDF + CSV
Memory Capacity	32,000 Values	Alarm Range	High & Low Alarm
Recording Interval	10 sec to 18 Hrs (Customizable)	Connectivity	USB 2.0
Battery Type	3V / Replaceable CR2032	Protection Class	IP65

Quick Start

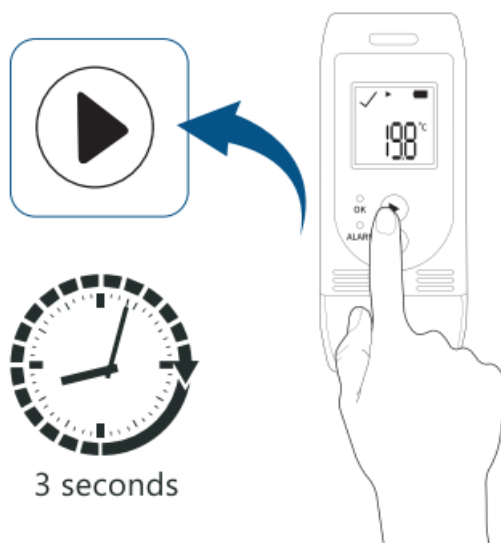
Quick Start ThermELC TE-02 PRO H

1. software Dowrioas.

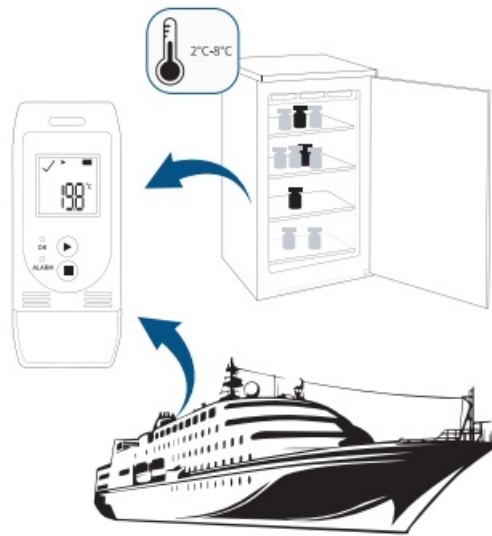


<https://www.thermelc.com/pages/download> config your parameter

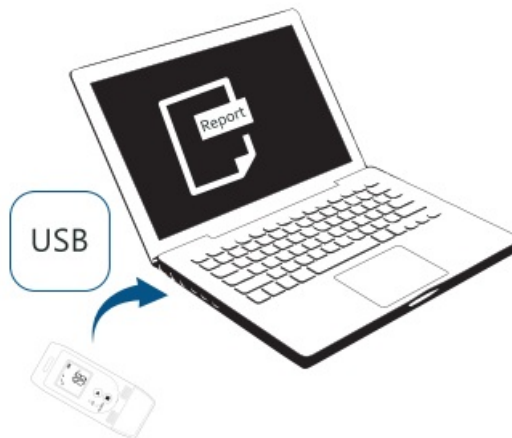
2. Press start 3 seconds



3. Measure Monitoring



4. Read



5. Report



Auto PDF. CSV Report Data & Graphic Comparison Available

6. Helps



<https://www.thermelc.com/pages/contact-us>

Operation Functions

1. Start Recording

Press and hold the START button for approximately 3sec. The OK light is on and the (▶) or (WAIT) on screen

indicates the logger is started.

2. Mark

When the device is recording, press and hold the START button for more than 3sec, and the screen will switch to the “MARK” interface. The number of MARK” will increase by one, indicating data was marked successfully.

3. stop Recording

Press and hold the STOP button for more than 3sec until the STOP (■) symbol displays on the screen, indicating stopping recording successfully.

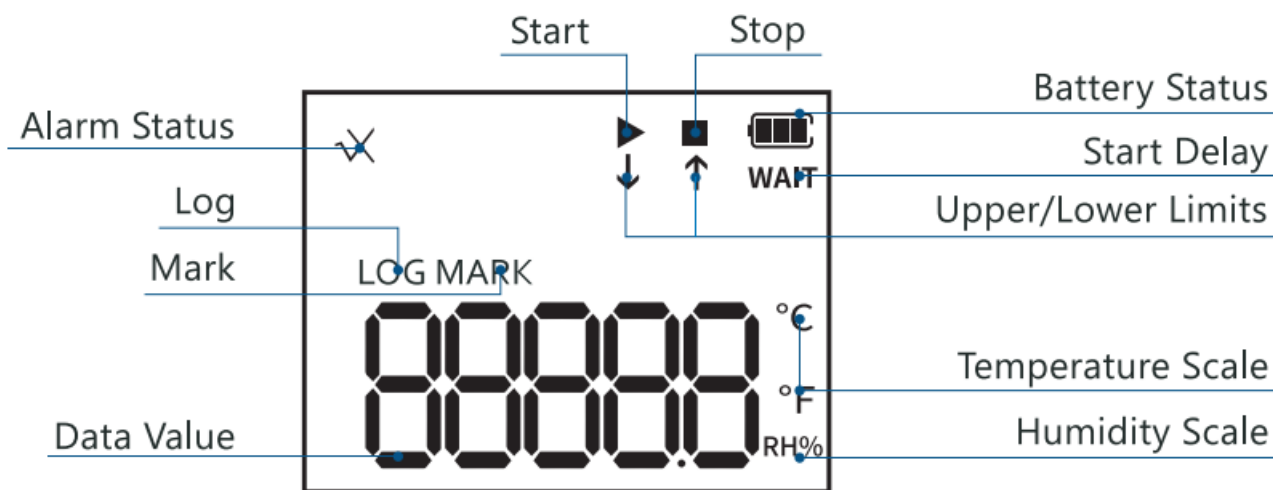
4. Switch the display

Shortly press START button to switch to different display interface. The interfaces shown in sequence are respectively: Real-time Temperature > Real-time Humidity > LOG > MARK > Temperature Upper Limit > Temperature Lower Limit > Humidity Upper Limit > Humidity Lower Limit.

5. Get Report

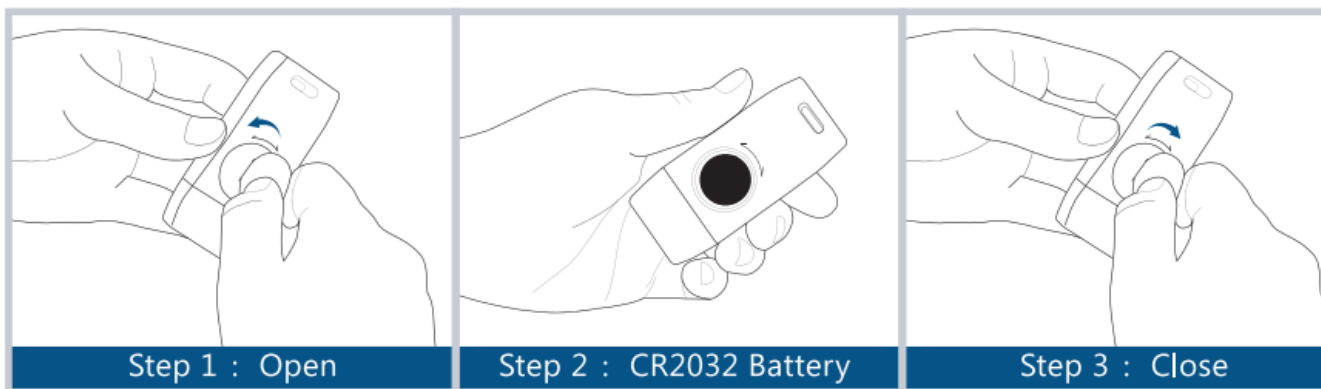
Connect the data logger to PC via USB, and it will auto-generate PDF and CSV reports.

LCD Display Instructions



▶	Data logger s recording
■	Data logger has stopped recording
WAIT	Data logger s in Sart Delay satus,
√	Temperature and Humidity ls within the limited range
Xand↑	Measured value exceeds it upper limit
Xand↓	Messured value exceeds s lower imit

Battery Replacement



Technical Support



<https://thermelc.com/pages/support>

Video Instruction



https://www.youtube.com/channel/UCVcVdaeDAISsSzAxqYYj_jw

<https://www.thermelc.com>

sales@thermelc.com

+44 (0)207 1939 488

Documents / Resources



[ThermELC TE-02 PRO Temperatuer and Humidity Data Logger](#) [pdf] User Manual
TE-02 PRO Temperatuer and Humidity Data Logger, TE-02 PRO, Temperatuer and Humidity D
ata Logger, and Humidity Data Logger, Humidity Data Logger, Data Logger, Logger

References

- [User Manual](#)