



ThermElc TE-02 PRO H Temperature and Humidity Data Logger User Manual

[Home](#) » [ThermELC](#) » ThermElc TE-02 PRO H Temperature and Humidity Data Logger User Manual 

ThermElc

User Manual
TE-02 PRO H
Temperature and Humidity
Data Logger

Contents

- [1 Product Introductions](#)
- [2 Main Feature](#)
- [3 Specification of ThermElc TE-02 PRO H](#)
- [4 Quick Start](#)
- [5 Operation Functions](#)
- [6 LCD Display Instructions](#)
- [7 Documents / Resources](#)
 - [7.1 References](#)

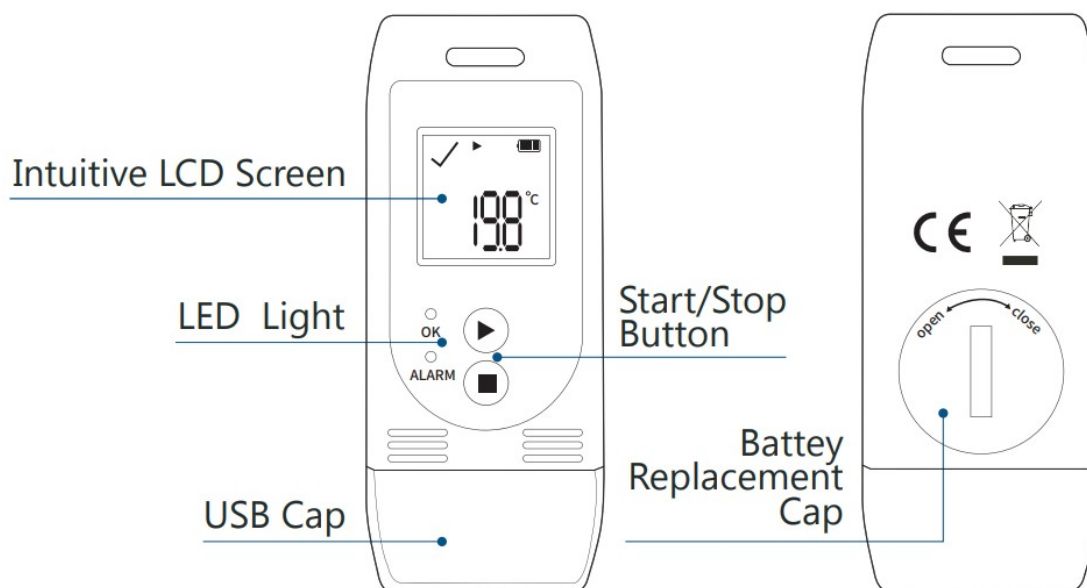
Product Introductions

ThermElc TE-02 PRO H is used for monitoring temperature and humidity of the sensitive goods during storage and transportation. TE-02 Pro H is integrated with USB & Plug-N-Play features for auto-generating secured PDF & CSV report without requiring additional Hardware (cable/interface) or software. TE-02 Pro H dataloggers are equipped with highly precise sensor with accuracy of $\pm 0.5^{\circ}\text{C}$ for entire range of 30°C to $+60^{\circ}\text{C}$ and $\pm 3\% \text{ rH}$.

Main Feature

- Multiple use temperature & humidity logger
- Auto generates PDF reports
- Auto generates CSV reports

- Logging of 32000 points
- No special device driver required
- Temperature and humidity over-limit alarm



Specification of ThermElc TE-02 PRO H

Type	Reusable / Multiple Use
Measurement Range	-30°C to +60°C
Accuracy	±0.5°C(-30°C to +60°C)
Humidity Range	0% to 100% rH
Humidity Accuracy	±3% rH
Memory Capacity	32,000 Values
Recording Interval	10 sec to 18 Hrs (Customizable)
Battery Type	3V / Replaceable CR2032
Dimension	IP65
Weight	89 mm x 36 mm x 16 mm
Certifications	approx. 30 Grams
Validation Certificate	EN12830, CE
Report	Hard Copy Included
Alarm Range	Self-Generated PDF + CSV
Connectivity	High & Low Alarm
Protection Class	USB 2.0

Quick Start

Quick start

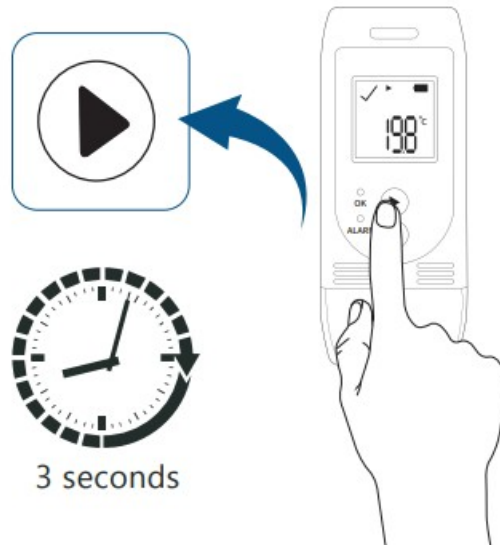
ThermElc TE-02 Pro H

1. Software Download

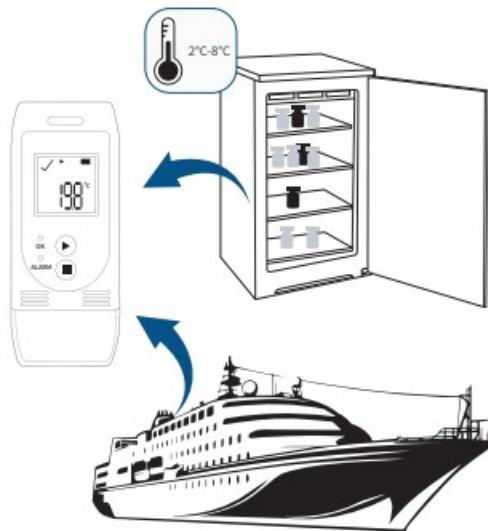


<https://www.thermelc.com/pages/download>

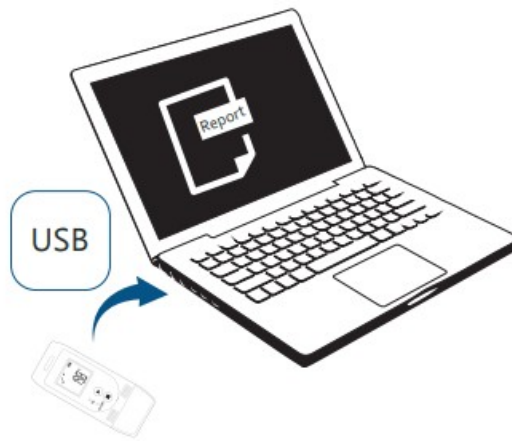
2. Press start 3 seconds



3. Measure Monitoring



4. Read



5. Report



Auto PDF, CSV Report
Data & Graphic Comparison
Available

6. Helps



<https://www.thermelc.com/pages/contact-us>

Operation Functions

1. Start Recording

Press and hold the START button for approximately 3sec. The OK light is on and the (▶) or (WAIT) on screen indicates the logger is started.

2. Mark

When the device is recording, press and hold the START button for more than 3sec, and the screen will switch to the "MARK" interface. The number of MARK' will increase by one, indicating data was marked successfully.

3. Stop Recording

Press and hold the STOP button for more than 3sec until the STOP (■) symbol displays on the screen, indicating stopping recording successfully.

4. Switch the display

Shortly press START button to switch to different display interface.

The interfaces shown in sequence are respectively:

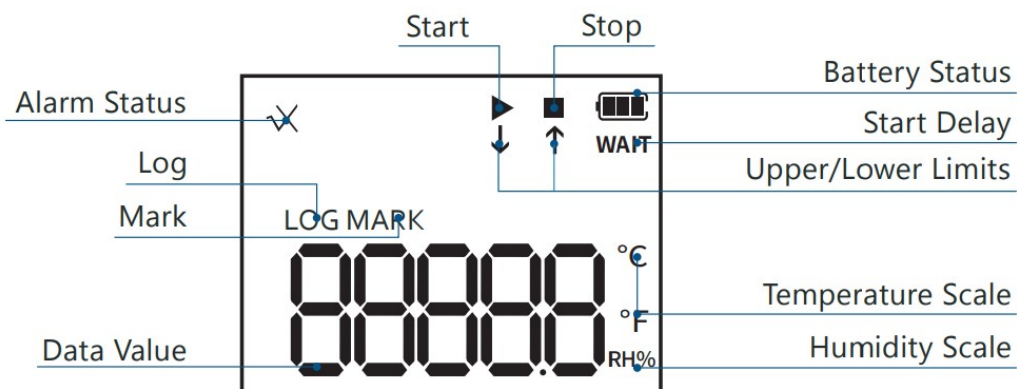
Real-time Temperature > Real-time Humidity > LOG > MARK > Temperature Upper Limit > Temperature Lower

Limit > Humidity Upper Limit > Humidity Lower Limit.

5. Get Report

Connect the data logger to PC via USB, and it will auto-generate PDF and CSV reports.

LCD Display Instructions



	Data logger is recording
	Data logger has stopped recording
WAIT	Data logger is in Start Delay status
	Temperature and Humidity is within the limited range
x and ↑	Measured value exceeds its upper limit
x and ↓	Measured value exceeds its lower limit

Battery Replacement



Technical Support



<https://thermelc.com/pages/support>

Video Instruction



https://www.youtube.com/channel/UCVcVdaeDAISsSzAxqYYj_jw

<https://www.thermelc.com>

sales@thermelc.com

+44 (0)207 1939 488

Documents / Resources



[ThermElc TE-02 PRO H Temperature and Humidity Data Logger](#) [pdf] User Manual
TE-02 PRO H Temperature and Humidity Data Logger, TE-02 PRO H, Temperature and Humidity Data Logger, Humidity Data Logger, Data Logger, Logger

References

- [Th Temperature Data Logger leading manufacturer – Therm ELC](#)
- [User Manual](#)

[Manuals+](#), [Privacy Policy](#)

This website is an independent publication and is neither affiliated with nor endorsed by any of the trademark owners. The "Bluetooth®" word mark and logos are registered trademarks owned by Bluetooth SIG, Inc. The "Wi-Fi®" word mark and logos are registered trademarks owned by the Wi-Fi Alliance. Any use of these marks on this website does not imply any affiliation with or endorsement.