



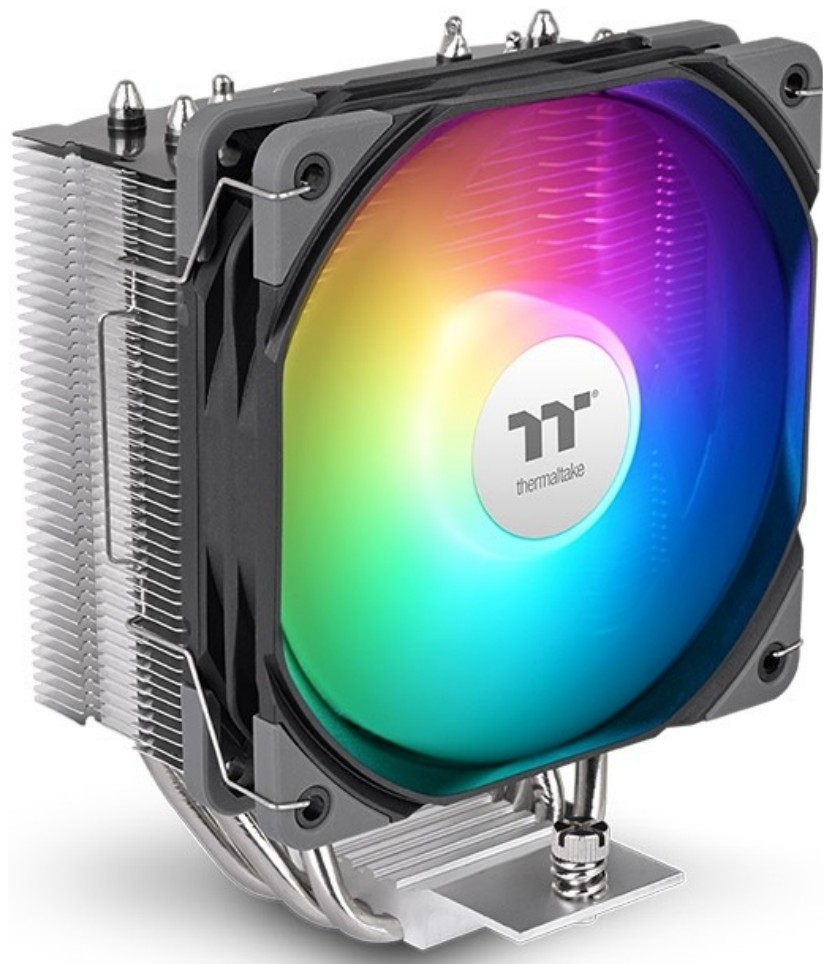
[Home](#) » [thermaltake](#) » **thermaltake UX400 ARGB Sync CPU Cooler Installation Guide** 

## Contents [ [hide](#) ]

- [1 thermaltake UX400 ARGB Sync CPU Cooler](#)
- [2 Specifications](#)
- [3 Fan Performance & Acoustics](#)
- [4 Build & Reliability](#)
- [5 ARGB & Lighting](#)
- [6 Mounting & Compatibility](#)
- [7 Installation Steps](#)
- [8 Parts List](#)
- [9 Intel Installation Guide](#)
- [10 AMD Installation Guide](#)
- [11 Fan Installation Guide](#)
- [12 FAQs](#)
- [13 Documents / Resources](#)
  - [13.1 References](#)



## **thermaltake UX400 ARGB Sync CPU Cooler**



## Specifications

Specification	Details
Cooling Capacity	240W TDP
Heat Pipes	4 × Ø6mm U-shaped (copper)
Fan Speed	700–1,800 RPM
Airflow	62.72CFM
Static Pressure	1.47mm-H <sub>2</sub> O
Noise Level	~25dBA
Bearing / Lifespan	Hydraulic, ~30,000hours
Power Input	Fan 3W; ARGB ~1.44W
Lighting	9 ARGB LEDs, 16.8M colors, 5V header

Specification	Details
Socket Support	Intel 115x/1200/1700/1851, AMD AM2–AM5
Connector Type	4-pin PWM fan + 3-pin 5V ARGB header

## Fan Performance & Acoustics

- **Fan Size:** 120×120×25mm
- **Speed (PWM-controlled):** 700–1,800RPM
- **Airflow:** 62.72CFM
- **Static Pressure:** 1.47mm-H<sub>2</sub>O
- **Noise Level:** Approx. 25.0dBA

## Build & Reliability

- **Bearing Type:** Hydraulic bearing with sealed cap
- **Fan Lifespan:** ~30,000hours
- **Rated Voltage:** 12V (fan) & 5V (ARGB)
- **Start Voltage:** 6.0V
- **Power Input:** Fan ~3.0W; ARGB ~1.44W

## ARGB & Lighting

- **ARGB LEDs:** 9 addressable LEDs in the fan
- **Color Support:** 16.8million colors
- **Compatibility:** Syncs with major motherboard RGB software using 5V ARGB header

## Mounting & Compatibility

- **Supported Intel Sockets:** LGA1851,1700,1200,115x series
- **Supported AMD Sockets:** AM5,AM4,AM3/AM3+,AM2/AM2+,FM1/FM2
- **Mounting Kit:** Includes brackets and standoffs for both Intel and AMD platforms

## Installation Steps

**Step 1:** Prepare the Components

- Unbox the cooler and confirm all included parts:
- Heatsink with pre-installed fan
- Mounting brackets (Intel & AMD)
- Backplate (Intel only)
- Screws & standoffs
- Thermal paste (if not pre-applied)
- ARGB and fan cables

### **Step 2:** Remove Existing Cooler (if applicable)

1. Shut down and unplug your PC.
2. Remove the old cooler from the CPU.
3. Clean any old thermal paste from the CPU using isopropyl alcohol and a lint-free cloth.

## **Intel Platform Installation (LGA 115x/1200/1700/1851)**

### **Step 3A:** Install the Backplate

1. Place the backplate behind the motherboard, aligning it with the socket holes.
2. Insert Intel standoffs through the motherboard into the backplate.
3. Secure the standoffs with screws from the top side.

### **Step 4A:** Attach Intel Mounting Brackets

1. Choose the correct hole position on the brackets according to your socket type.
2. Attach the brackets onto the standoffs and secure with screws.

## **AMD Platform Installation (AM4/AM5)**

### **Step 3B:** Prepare AMD Mount

1. Remove the factory-installed AMD plastic brackets from the motherboard.
2. Retain the default AMD backplate in place.

### **Step 4B:** Attach AMD Brackets

1. Use the included AMD standoffs to secure the AMD-specific brackets to the motherboard using the existing backplate.

### **Step 5: Apply Thermal Paste**

- Apply a small pea-sized amount of thermal paste to the center of the CPU.

### **Step 6: Mount the Heatsink**

1. Align the base of the heatsink over the CPU and bracket holes.
2. Secure it using the spring-loaded screws attached to the cooler.
3. Tighten the screws in a cross pattern (diagonally) to apply even pressure.

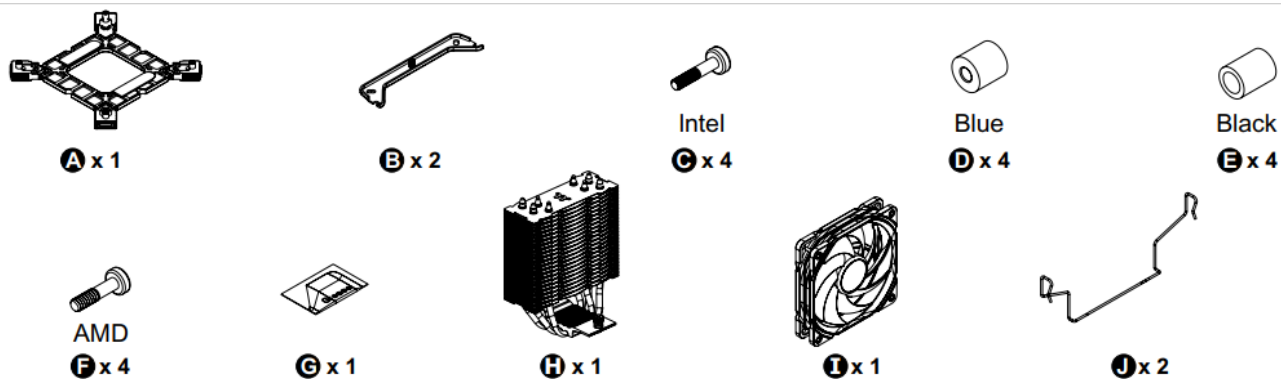
### **Step 7: Connect the Cables**

- Connect the 4-pin fan cable to the motherboard's CPU\_FAN header.
- Connect the 3-pin 5V ARGB cable to your motherboard's ARGB header (do not use a 12V RGB header).
  - Ensure correct orientation: 5V, Data, Ground.

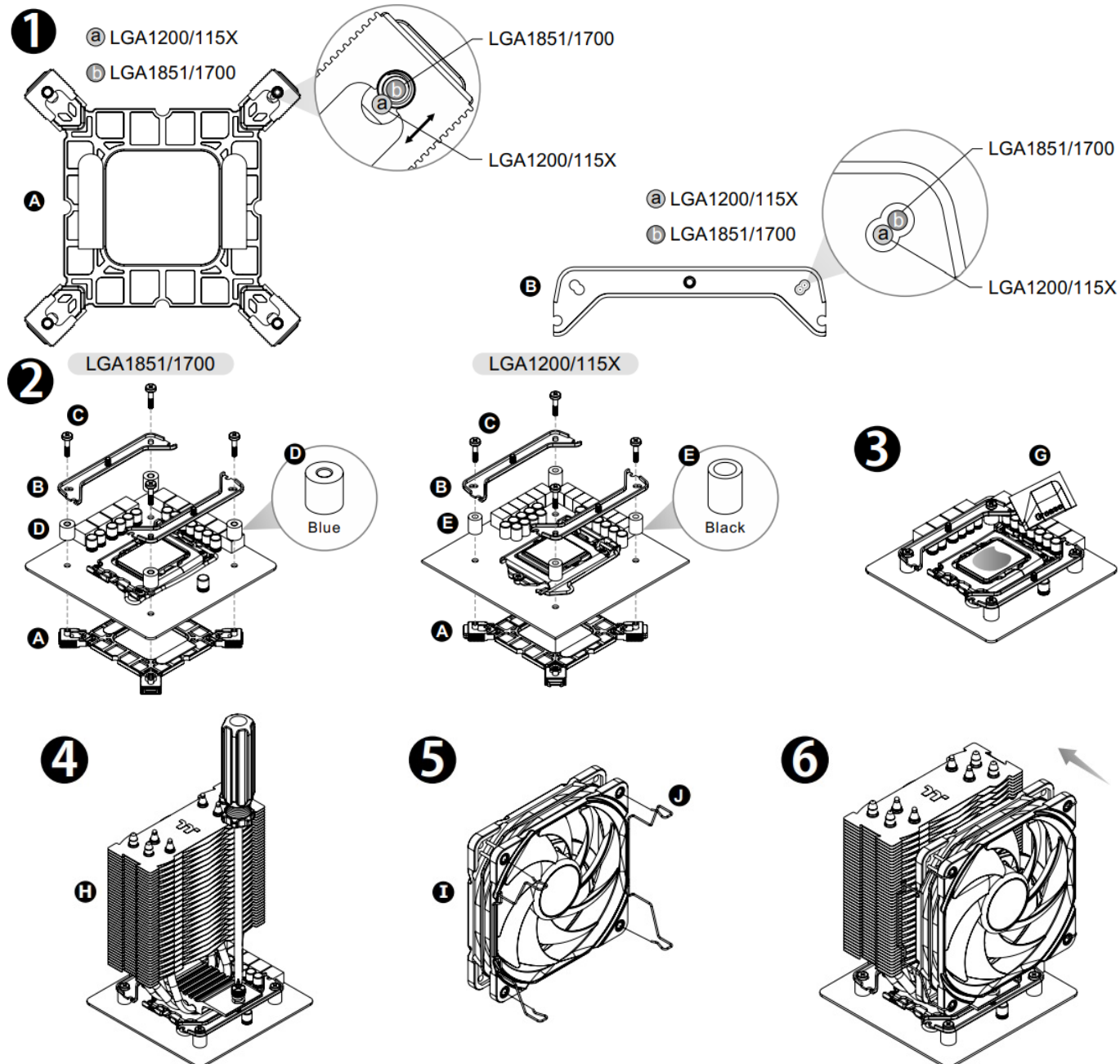
### **Step 8: Final Check and Power On**

- Confirm that the cooler is properly mounted and secure.
- Double-check all cable connections.
- Power on the system.
- Enter BIOS to confirm CPU fan operation and temperatures.
- Open your motherboard RGB control software to configure lighting effects if desired.

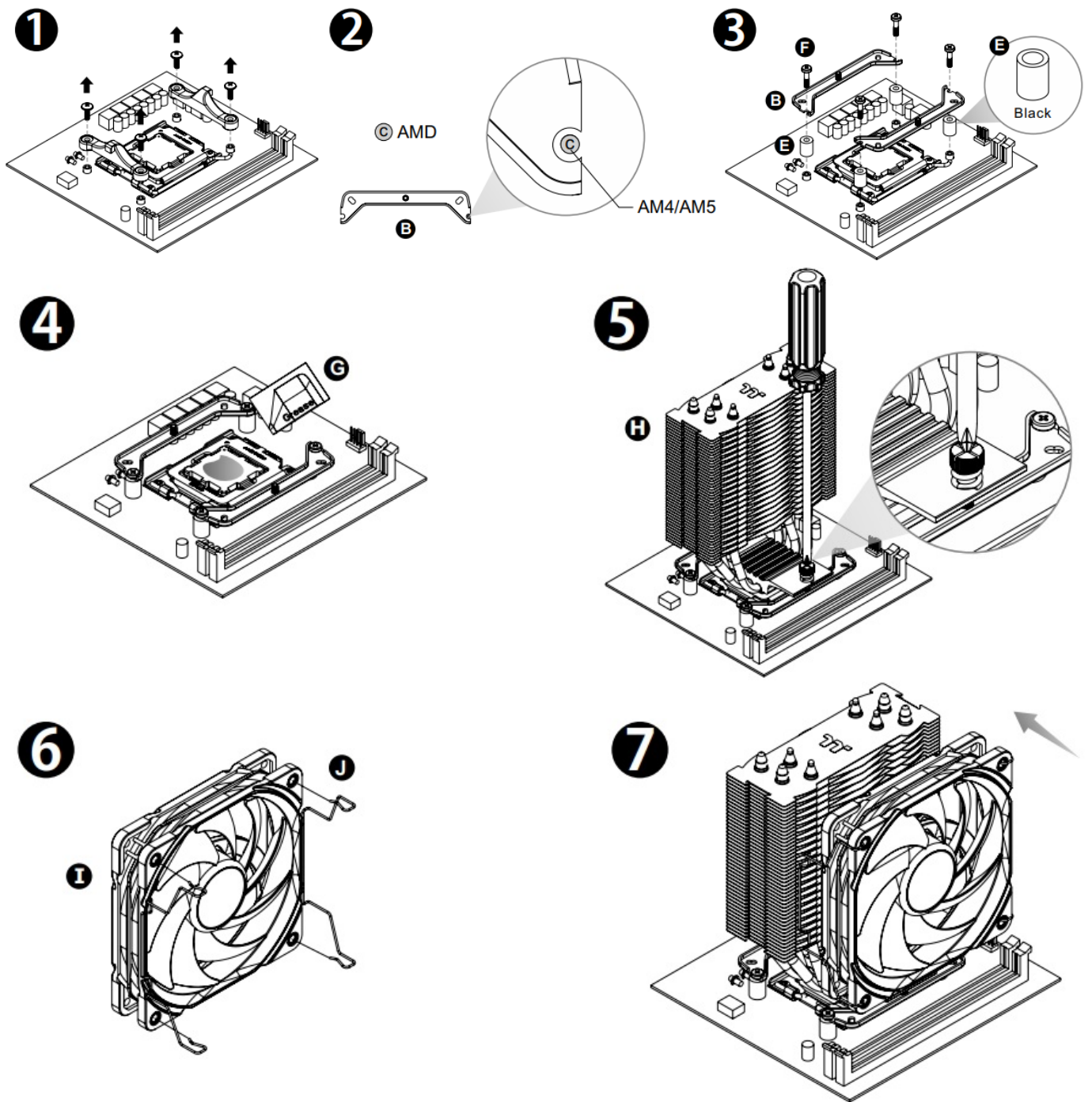
## **Parts List**



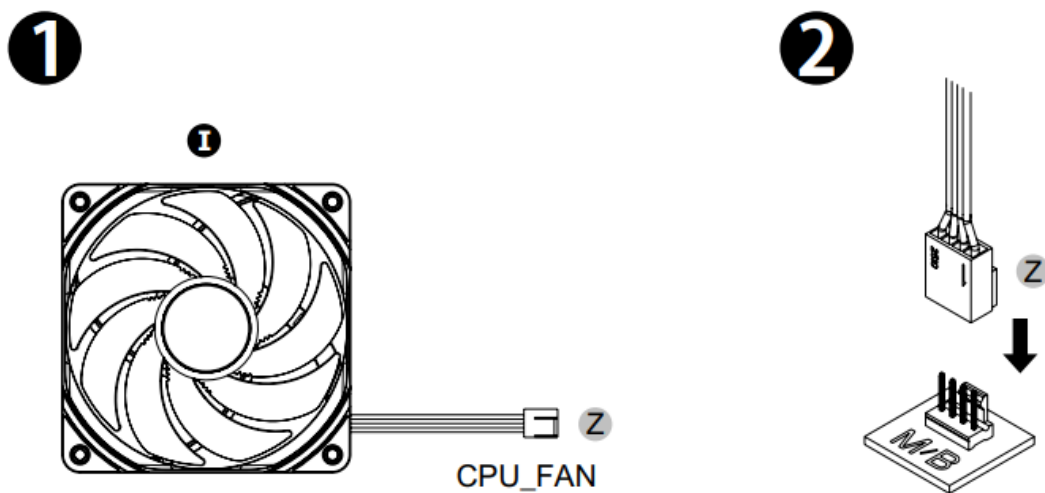
## Intel Installation Guide



## AMD Installation Guide



## Fan Installation Guide







Scan Here Installation Guide



© 2025 Thermaltake Technology Co., Ltd. All Rights Reserved.

[www.thermaltake.com](http://www.thermaltake.com)

## FAQs

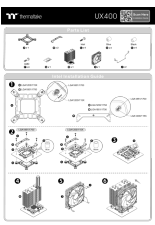
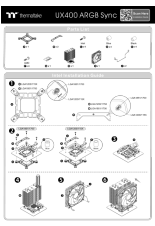
### 1. How do I know which socket type to use for my CPU?

You can refer to your CPU's specifications or consult your motherboard manual to determine the compatible socket type.

### 2. Can this cooler be used with both Intel and AMD CPUs?

Yes, the UX400 cooler is designed to be compatible with both Intel and AMD processors. Simply follow the respective installation guides provided.

## Documents / Resources

	<a href="#">thermaltake UX400 ARGB Sync CPU Cooler [pdf]</a> Installation Guide LGA1200-115X, LGA1851-1700, UX400 ARGB Sync CPU Cooler, UX400, ARGB Sync CPU Cooler, CPU Cooler, Cooler
	<a href="#">Thermaltake UX400 ARGB Sync CPU Cooler [pdf]</a> Installation Guide P142-AL12SW-A, UX400, UX400 ARGB Sync CPU Cooler, UX400 ARGB , Sync CPU Cooler, CPU Cooler, Cooler

## References

- [User Manual](#)

thermaltake

ARGB Sync CPU Cooler, cooler, CPU Cooler, LGA1200-115X, LGA1851-1700, thermaltake, UX400, UX400 ARGB Sync CPU Cooler



---

# Leave a comment

Your email address will not be published. Required fields are marked \*

Comment \*

Name

Email

Website

☐ Save my name, email, and website in this browser for the next time I comment.

**Post Comment**

**Search:**

e.g. whirlpool wrf535swhz

**Search**

[Manuals+](#) | [Upload](#) | [Deep Search](#) | [Privacy Policy](#) | [@manuals.plus](#) | [YouTube](#)

This website is an independent publication and is neither affiliated with nor endorsed by any of the trademark owners. The "Bluetooth®" word mark and logos are registered trademarks owned by Bluetooth SIG, Inc. The "Wi-Fi®" word mark and logos are registered trademarks owned by the Wi-Fi Alliance. Any use of these marks on this website does not imply any affiliation with or endorsement.