



thermaltake TT RGB Plus 2.0 Software User Manual

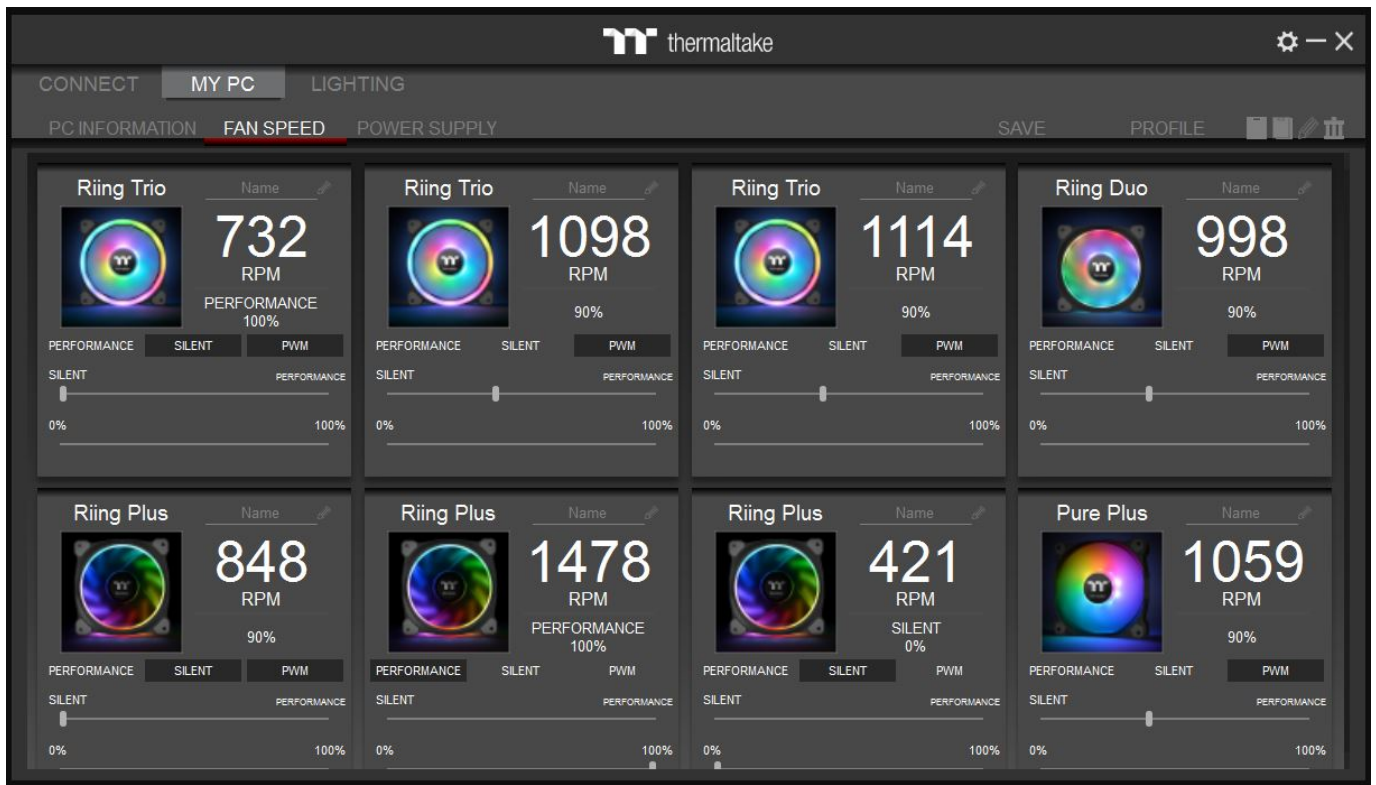
[Home](#) » [thermaltake](#) » thermaltake TT RGB Plus 2.0 Software User Manual 

Contents

- 1 thermaltake TT RGB Plus 2.0 Software
- 2 CONNECT
- 3 MY PC
- 4 LIGHTING
- 5 Ultra LCD Monitor
- 6 SETTINGS
- 7 NOTIFICATIONS
- 8 ACCOUNT
- 9 TT RGB PLUSQ&A
- 10 TT RGB PLUS supported products
- 11 TT SYNC supported Thermaltake gaming products
- 12 The following products are not supported
- 13 TT RGB PLUS lighting effects supports third-party products
- 14 Documents / Resources
 - 14.1 References
- 15 Related Posts



thermaltake TT RGB Plus 2.0 Software



Please download TT RGB PLUS 2.0 from Thermaltake's Official website.

<https://www.thermaltake.com/downloads>

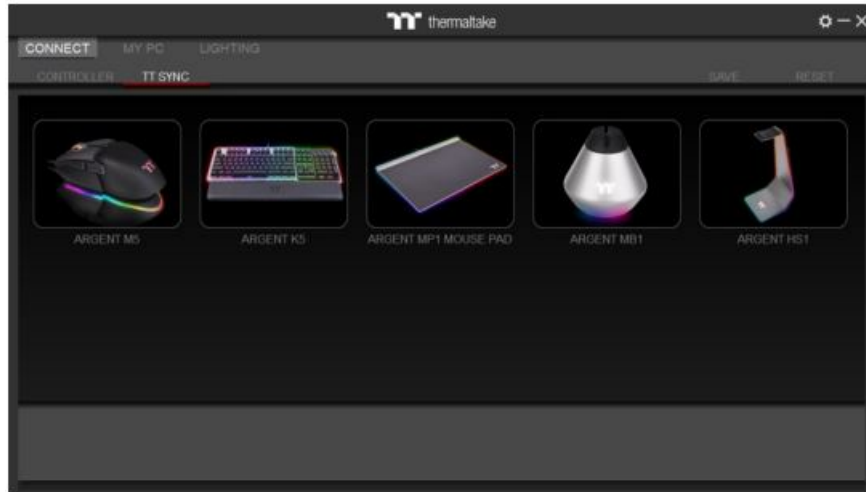
CONNECT

CONTROLLER



- a. Drag & drop to pair the liquid cooling products and case fans.
- b. Click the controller port to make the LEDs glow red to pair.
- c. The controller port is empty if you click the controller port without a red lighting effect.
- d. Show the controller DIP number.
- e. SAVE: Save the controller pairing settings.
- f. RESET: Reset the controller pairing.
- g. RESCAN: Rescan the controller connection.

TT SYNC



- Sync RGB lighting for TT gaming products and third parties.
- If user can't find the products on this page, please check if the USB driver is installed correctly.

MY PC

PC INFORMATION



Show PC Information

- CPU Information: Temperature, Load, Fan Speed, Wattages, Clock.
- GPU Information: Temperature, Load, Fan Speed, Wattages, Clock (Supports SLI).
- Memory Information: Channel, tRCD, CL, Frequency, Type, Temperature, Size.
- Sensors: Show W5 / W6 / W7 Plus / MX1 / TF2 / Floe RC Ultra / TOUGHLIQUID Ultra coolant liquid temperature and flow rate.

Q: Why doesn't the display fan speed, wattage, and temperature data of certain CPUs', GPUs' and memory?

A: The fan speed, wattage, and temperature data of certain CPUs', GPUs' and memories fail to display due to product design variances of individual manufacturers (e.g.: Intel, AMD, NVIDIA or motherboard manufacturers).

FAN SPEED



Case Fan Speed Information and PWM Performance Settings

- PERFORMANCE: 0% → 100% (1500rpm.)
- SILENT: 0% (300~500 rpm.)
- PWM: Set PWM silent (50%) to PWM performance (100%).
- NAME: Edit the case fan name.
- Radiator fan controller DIP number.

POWER SUPPLY

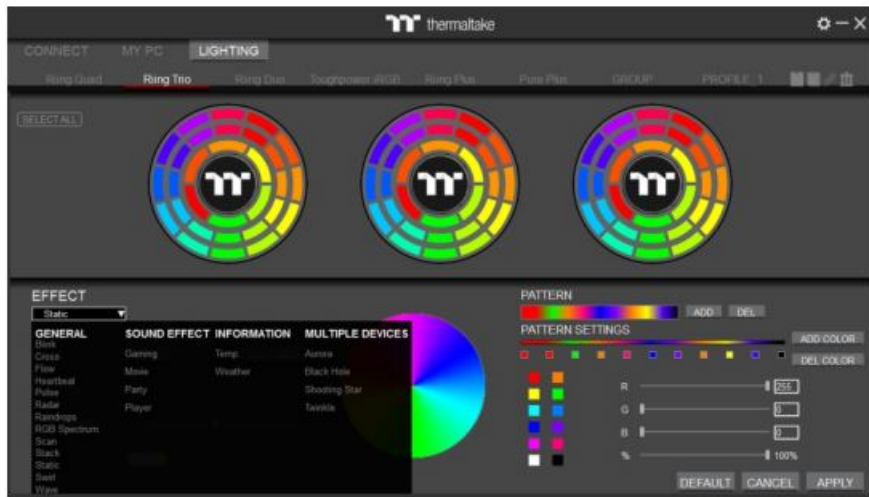


- If you have installed the iRGB DPS G power supply series, the power supply information will be displayed here.
- PSU Fan Speed: Set power fan silent, performance, zero and customize.
- For more software information about power supply, please refer to SPM website.

<https://dps.thermaltake.com/>

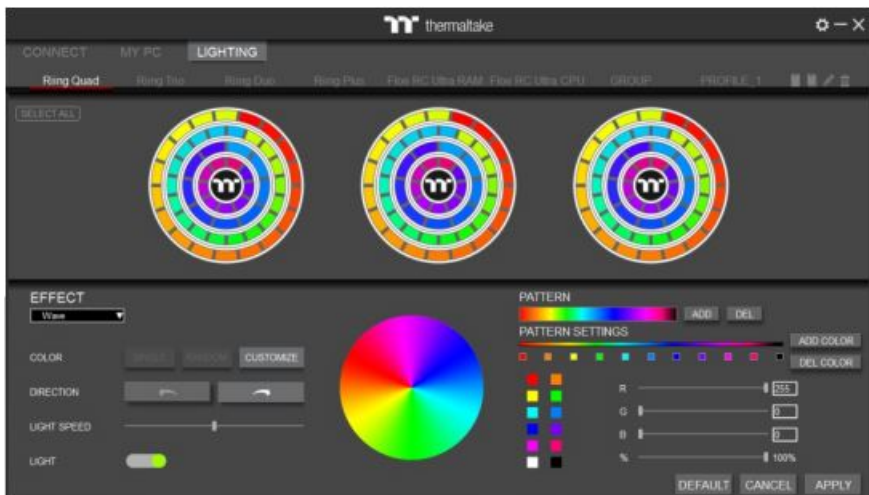
LIGHTING

Select 23 Lighting Effects.



- GENERAL
- SOUND EFFECTS
- INFORMATION
- MULTIPLE DEVICES

Preview and Set Products Lighting Effects



1. Click the TT logo to select all LEDs
2. COLOR
 - SINGLE: Select single ring to change color.
 - RANDOM: Random light show.
 - CUSTOMIZE: Set up a single LED color.
3. DIRECTION

Clockwise and counter-clockwise.
4. LIGHTING SPEED

Set up lighting effect speed.
5. LIGHT

Turn on and turn off.
6. RGB SETTINGS
 - Color palette.

- Quick color selection.
- RGB value setting.

7. PATTERN

Set up the color pattern ring.

8. PROFILE

- NEW: Add a new profile.
- COPY: Copy the profile.
- EDIT: Edit the profile name.
- DELETE: Delete profile.

9. DEFAULT

Reset the lighting effects.

10. CANCEL

Unselect all.

11. APPLY

Apply and save lighting effects.

12. SELECT ALL

Click to select all products' LEDs.

13. GROUP



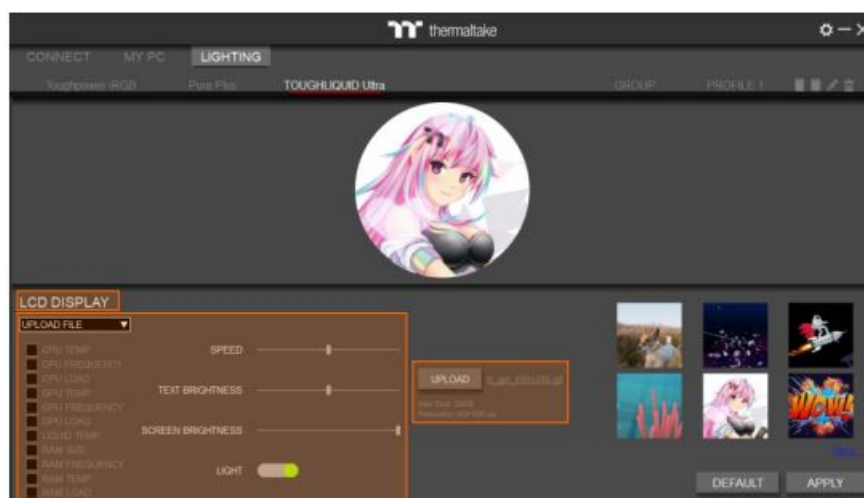
Select products to synchronize lighting effects. For example, sync lighting with Riing Quad, Riing Trio, Riing Plus, Toughpower iRGB, and ARGENT K5 RGB Keyboard.

Ultra LCD Monitor

- After installation of TT RGB PLUS, you can select “TOUGHLIQUID Ultra” on the “LIGHTING” page.
- Preview the CPU water block LCD
- LCD DISPLAY function list.
 - UPLOAD FILE
 - CPU TEMP.
 - CPU FREQUENCY
 - CPU LOAD
 - GPU TEMP.
 - GPU FREQUENCY
 - GPU LOAD

- RAM SIZE
- RAM FREQUENCY
- RAM TEMP.
- RAM LOAD
- LIQUID TEMP.
- CAROUSEL (Switches between CPU/GPU/Liquid information)
- WINDOW STREAM
- WEATHER
- CLOCK
- LCD visual effect settings.
 - Set LCD background, text and visual color, and screen brightness, or turn off the LCD screen.

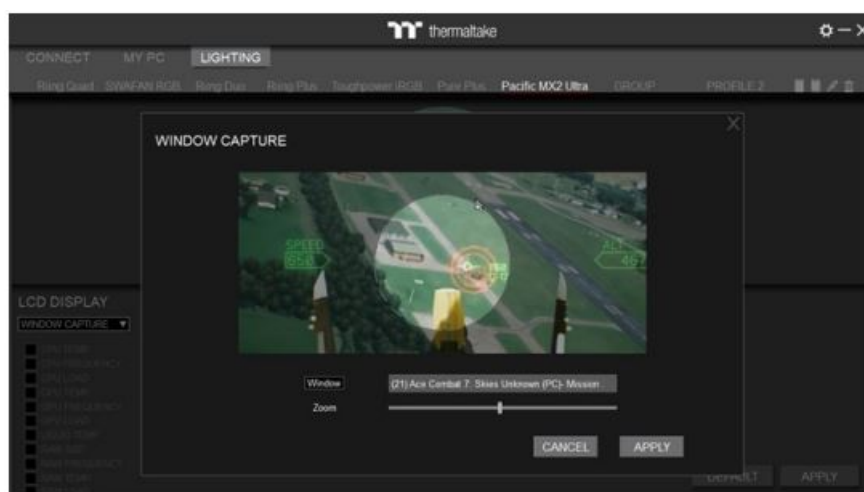
UPLOAD FILE



- Select “UPLOAD FILE” from “LCD DISPLAY”. You can upload a file to show the picture on the LCD screen.
- Set the LCD text information, speed, and brightness, or turn off the LCD screen.
- Click “UPLOAD” to upload the file.

File type: gif, jpg, png, mp4, avi, mov. Max size: 20MB

WINDOW STREAM



Set the Window to be Played on the LCD Screen

- Window: Select the window to play on the LCD.
- Zoom: Set zoom in and out.

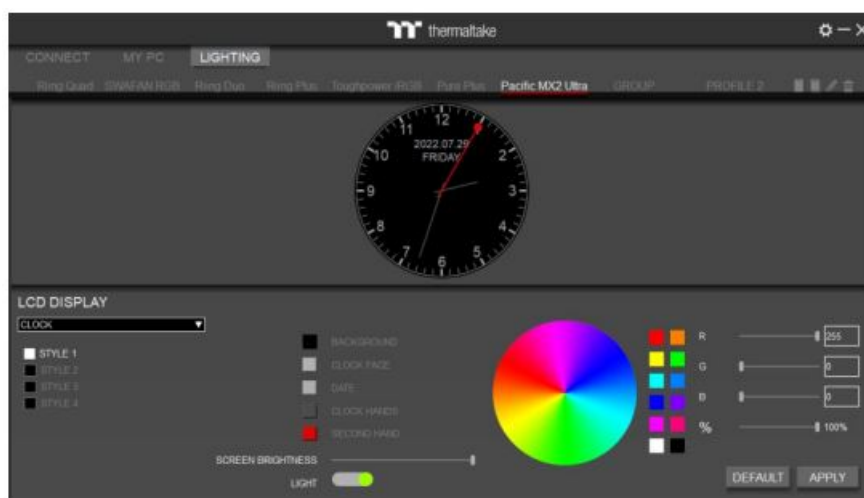
WEATHER



Select “WEATHER” to Show the Local City Weather. Users Can Set the Word Colors:

- DATE & CITY
- TIME
- TEMPERATURE
- TEMPERATURE RANGE
- HUMIDITY

CLOCK

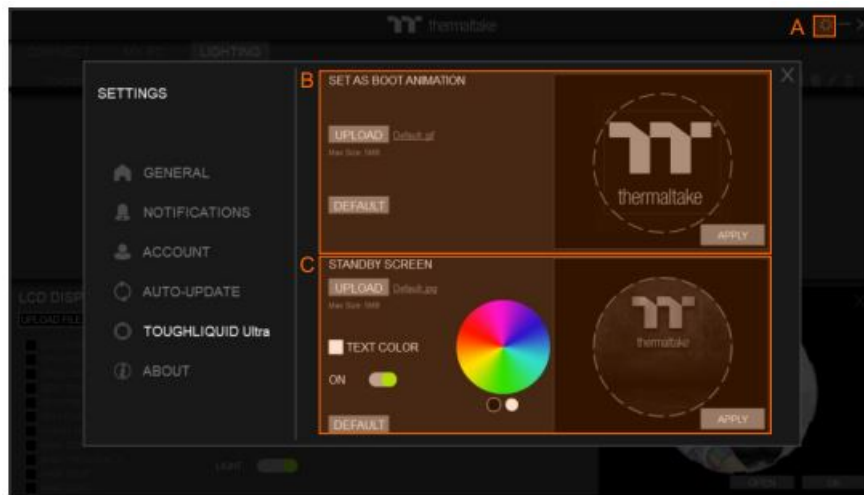


Select “CLOCK” to Show the Local Time. Users Have 4 Clock Styles to Set the Colors.

- BACKGROUND
- CLOCK FACE

- DATE
- CLOCK HANDS
- SECOND HAND

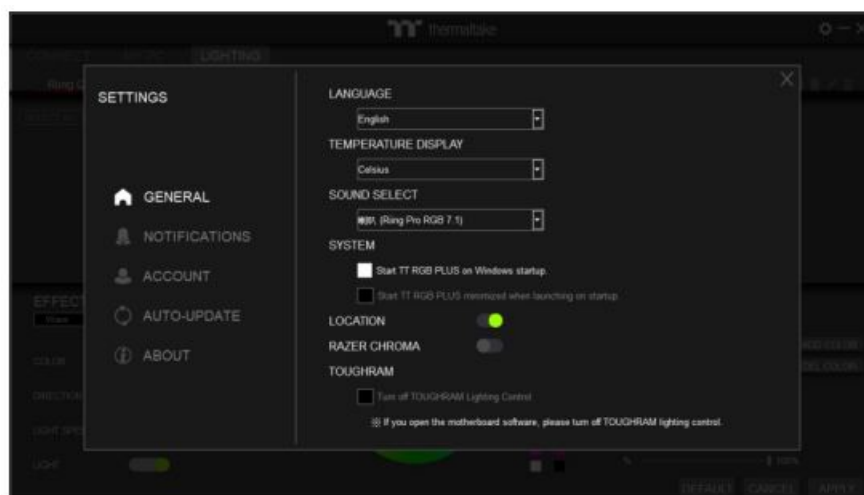
SETTINGS



- A. Click the gear icon on the upper right corner to enter the “SETTINGS” menu.
- B. Upload the picture to set it as LCD boot animation. (GIF only, Max size: 5MB)
- C. Upload the picture to set it as LCD standby screen. (JPG only, Max size: 5MB)

SETTINGS

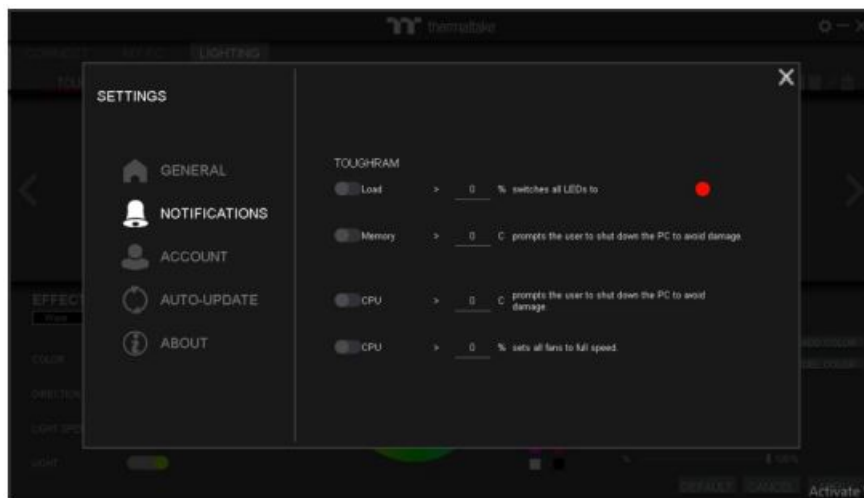
GENERAL



- LANGUAGE
 - English/ / /Français/Deutsch/ /■■■■/Русский /Spanish /■■■■
- TEMPERATURE
 - Celsius / Fahrenheit
- SOUND SELECT
 - Select the sound resource outputs.

- **SYSTEM**
 - Start TT RGB PLUS on Windows startup.
 - Start TT RGB PLUS minimized when launching on startup.
- **LOCATION**
 - Allow Location.
- **RAZER CHROMA**
 - Allow Razer chroma lighting sync.
- **TOUGHRAM**
 - If you open the motherboard software, please turn off TOUGHRAM lighting control.

NOTIFICATIONS



TOUGHRAM

- Set the percentage of TOUGHRAM load greater than switches all LEDs to custom color.
- Setting the temperature of TOUGHRAM prompts the user to shut down the PC to avoid damage.
- Setting the CPU temperature prompts the user to shut down the PC to avoid damage.
- Set the percentage of CPU load greater than makes all fans to full speed.

POWER SUPPLY

Turn off the PSU warning alert.

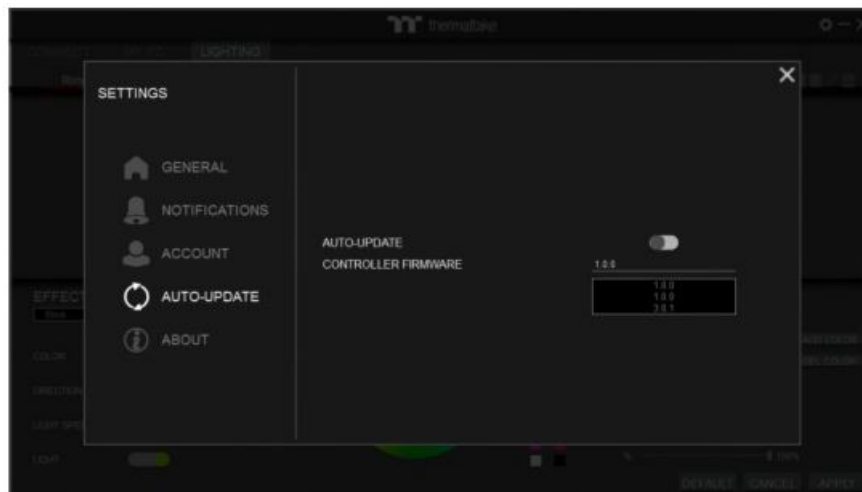
ACCOUNT



TT LOGIN

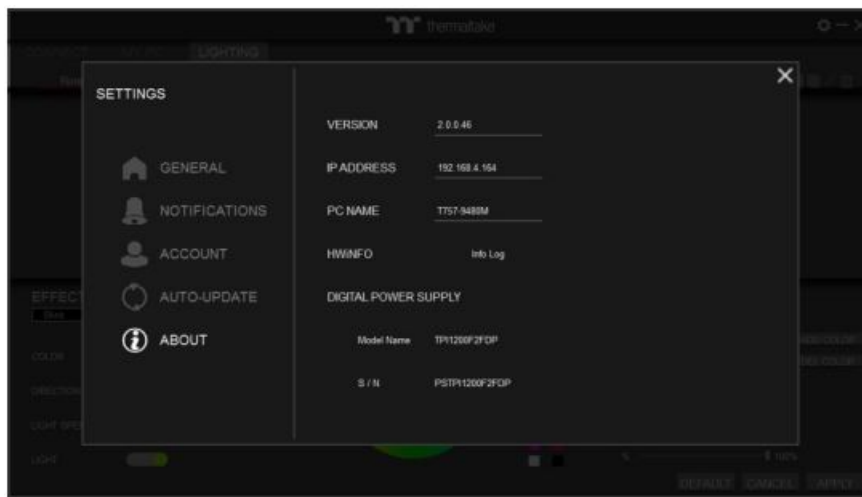
- Login TT account to upload DPS G PSU data.
- Amazon Alexa Status.

AUTO-UPDATE



- Automatic update switch
- Controller firmware

ABOUT



TT RGB PLUS Client App Information

- VERSION
- IP ADDRESS
- PC NAME
- HWINFO: Hardware information log
- DIGITAL POWER SUPPLY: Model Name and S / N.

TT RGB PLUSQ&A

- What operating systems are supported by the TT RGB PLUS PC Client software?

OS compatibility: Windows 10 and Windows 11

TT RGB PLUS official download link: <https://www.thermaltake.com/downloads>

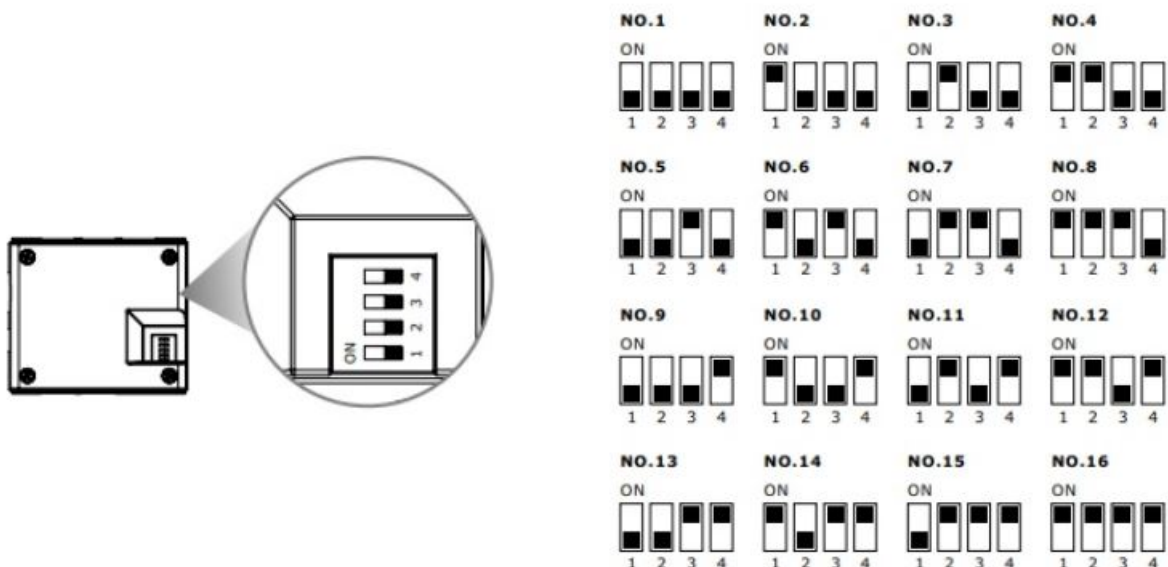
- What's different with TT RGB PLUS 1.0 and 2.0?

TT RGB PLUS 2.0 integrates TT products in one software: Liquid Cooler, Case fan, Power Supply & Memory.

TT RGB PLUS 2.0 and TT RGB PLUS 1.0 will overwrite one another; users can only install one version of TT RGB PLUS.

- How to set controller number?

Set the DIP switch on the backside of the controller to assign the number of the controller. TT RGB PLUS can support 16 controllers.



- How to reset controller settings?

Please refer to the TT RGB PLUS user manual A-1.

- Cannot find product to pair?

Please check the product is correctly inserted the controller port.

- Cannot find controller?

Check the controller is correctly inserted into the motherboard USB port. Check whether the 4-pin power cable is connected to too many controllers. Turn off computer power and restart.

- Why doesn't the fan speed, wattage, and temperature data of certain CPUs', GPUs' and memory display?

The fan speed, wattage, and temperature data of certain CPU's, CPUs', GPUs' and memories fail to display due to product design variances of individual manufacturers (e.g.: Intel, AMD, NVIDIA or motherboard manufacturers).

- How to set fan speed?

Please refer to the TT RGB PLUS user manual B-2.

- How to edit the case fan name?

Please refer to the TT RGB PLUS user manual B-2.

- How to set profile?

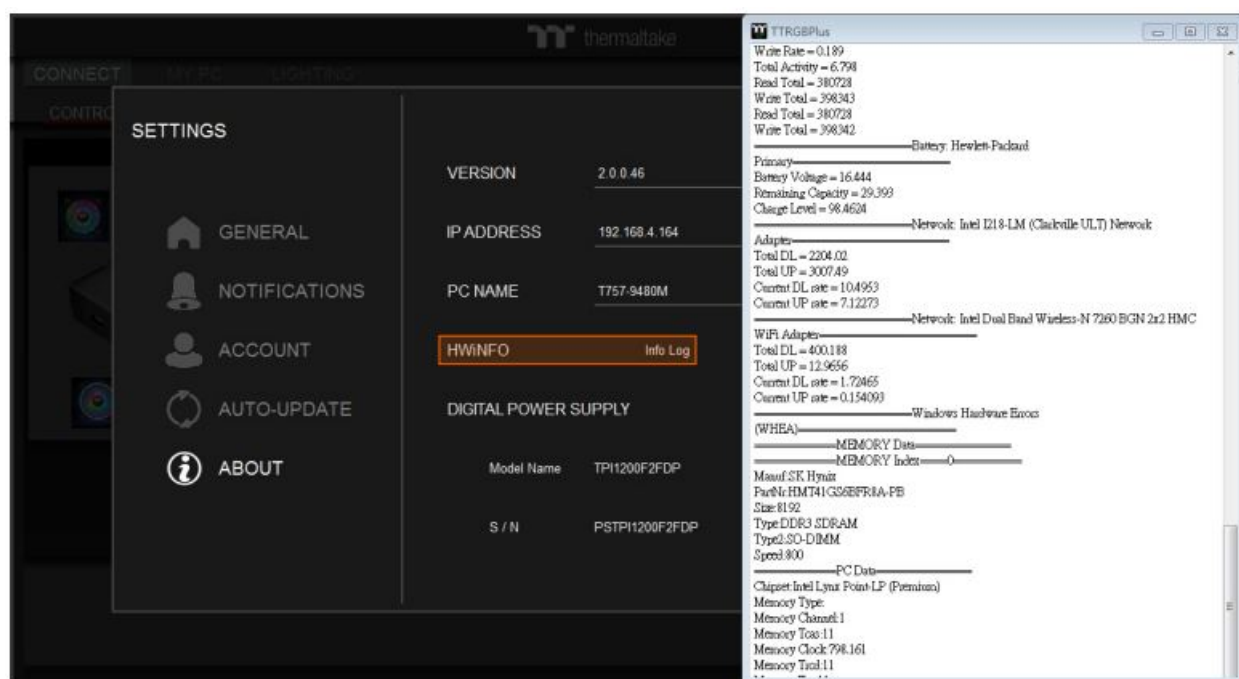
Please refer to the TT RGB PLUS user manual C-8.

- How to sync all products lighting effects?

Please refer to the TT RGB PLUS user manual C-13.

- How to get TT RGB PLUS hardware information log?

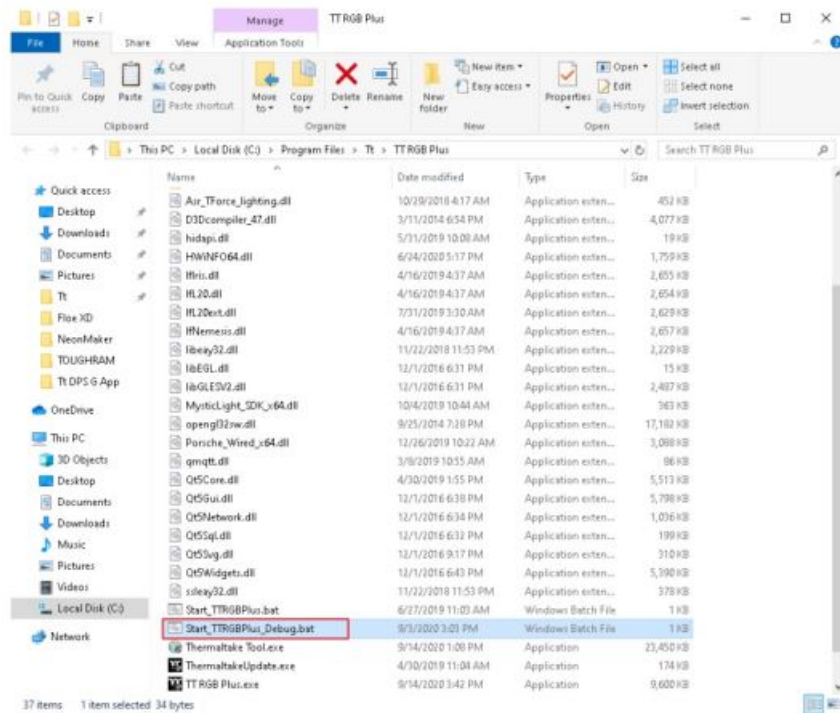
SETTINGS >> ABOUT >> HWiNFO >> Info Log



- How to get TT RGB PLUS debug log?

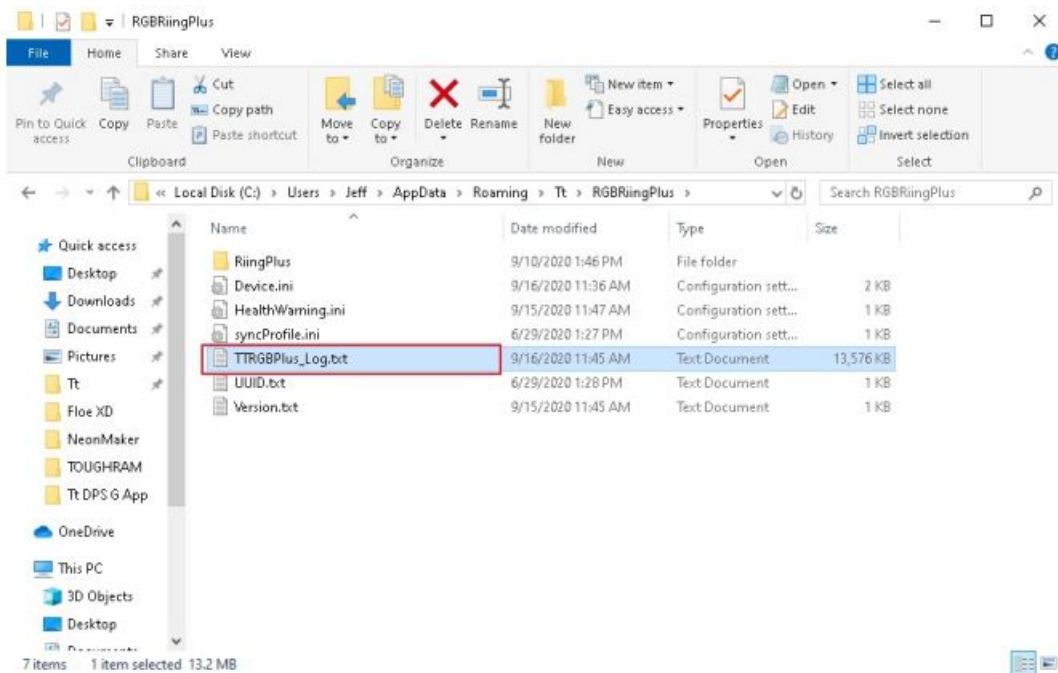
Ensure TT RGB PLUS software was closed.

Open the installation folder C:\Program Files\Tt\TT RGB PLUS Find the "Start_TTRGBPlus_Debug.bat" file and double-click it.



Open the hidden folder and check the log file TTRGBPlus_Log.txt

C:\Users\user\AppData\Roaming\Tt\TTRGBPlus2.0

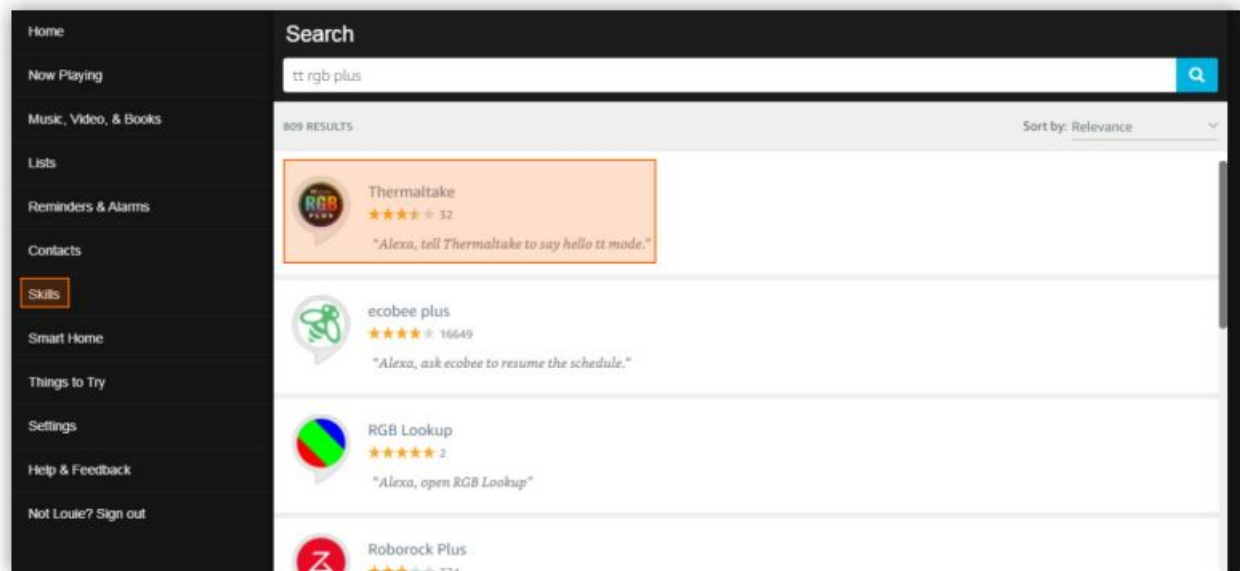


Send the software log and hardware information log to the Thermaltake team.

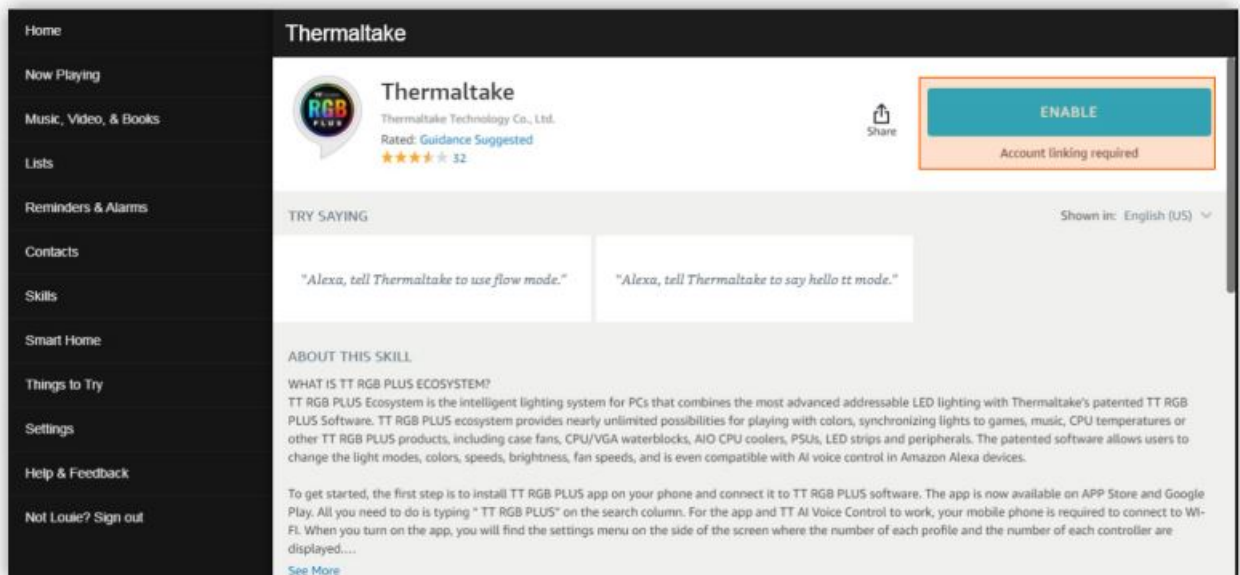
- How to use Amazon Alexa?

Go to <https://alexa.amazon.com/spa/index.html#cards> and log in using an Amazon account.

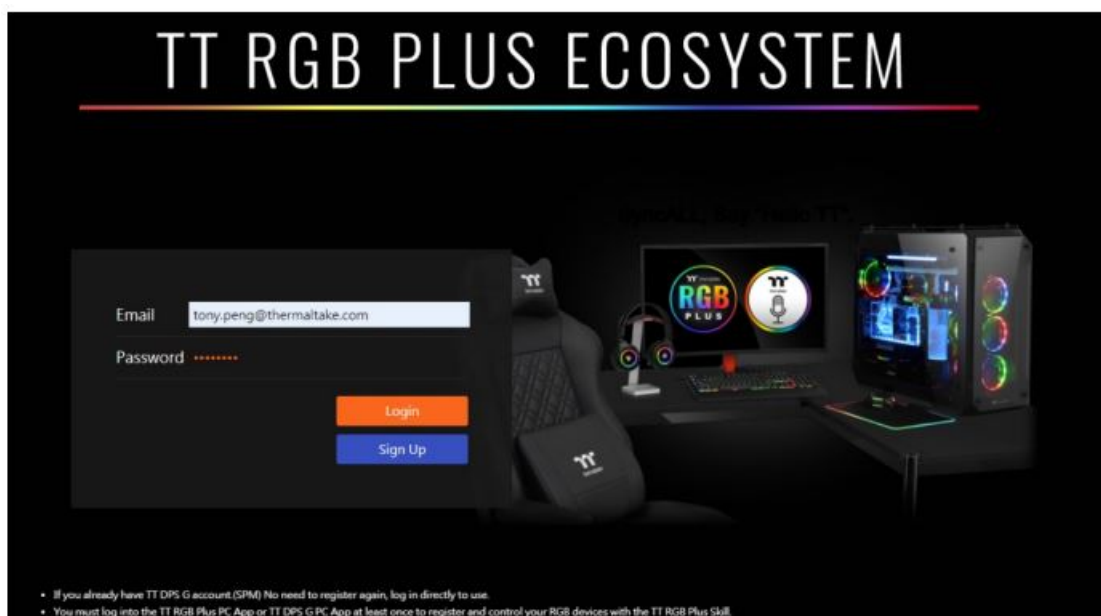
Click "Skills" to search "TT RGB PLUS" and select this skill.



Click “ENABLE”



“Login” or “Sign Up” the TT account

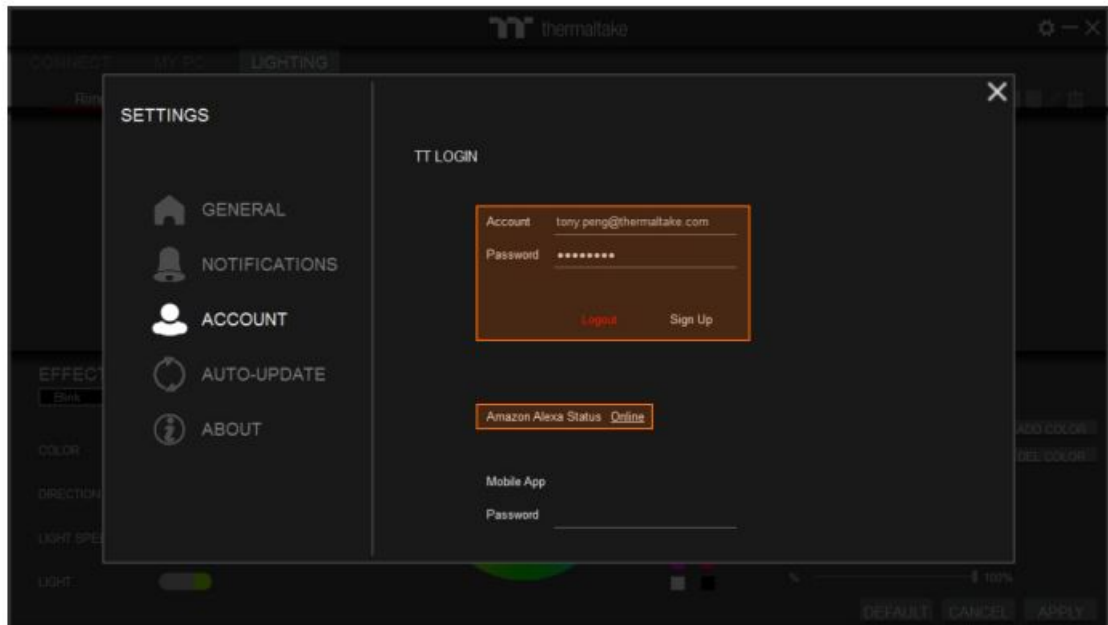


- If you already have a TT DPS G (SPM) account, there is NO need to register again. Please log in using

your existing TT DPS G account.

- You must log into the TT RGB PLUS PC App at least once to register and control your RGB devices with the TT RGB Plus Skill.

Within TT RGB PLUS Software, Click the gear icon to enter the settings menu and select “ACCOUNT”, then use your created or existing account to log in. Once the login is successful and Alexa is paired, “Online” is shown near Amazon Alexa Status.



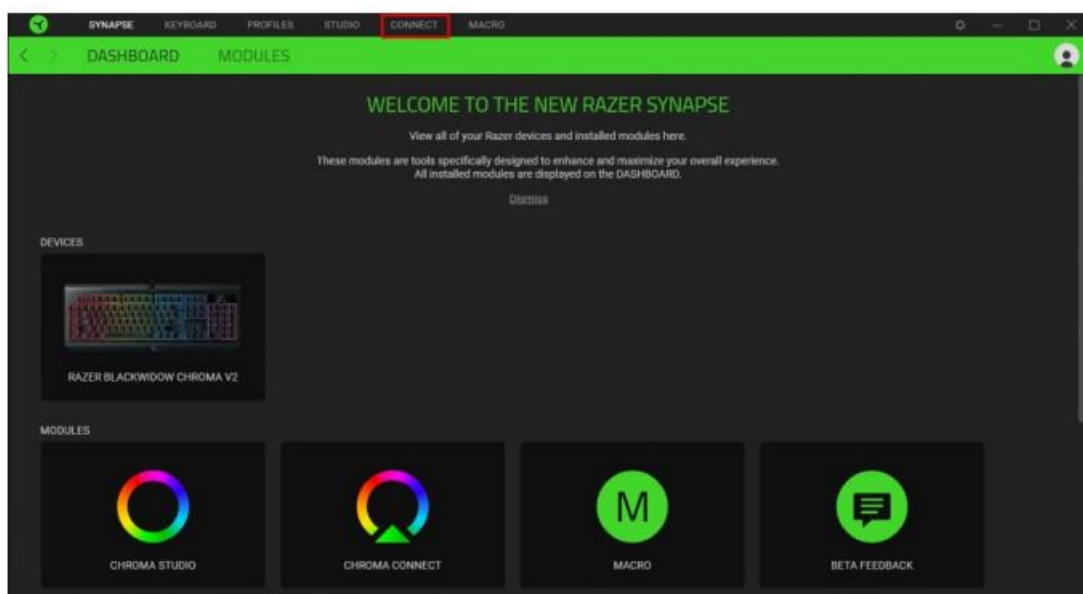
- How to use RAZER CHORMA sync?

Make sure your product has a RAZER CHROMA logo on the website as shown in the picture below.

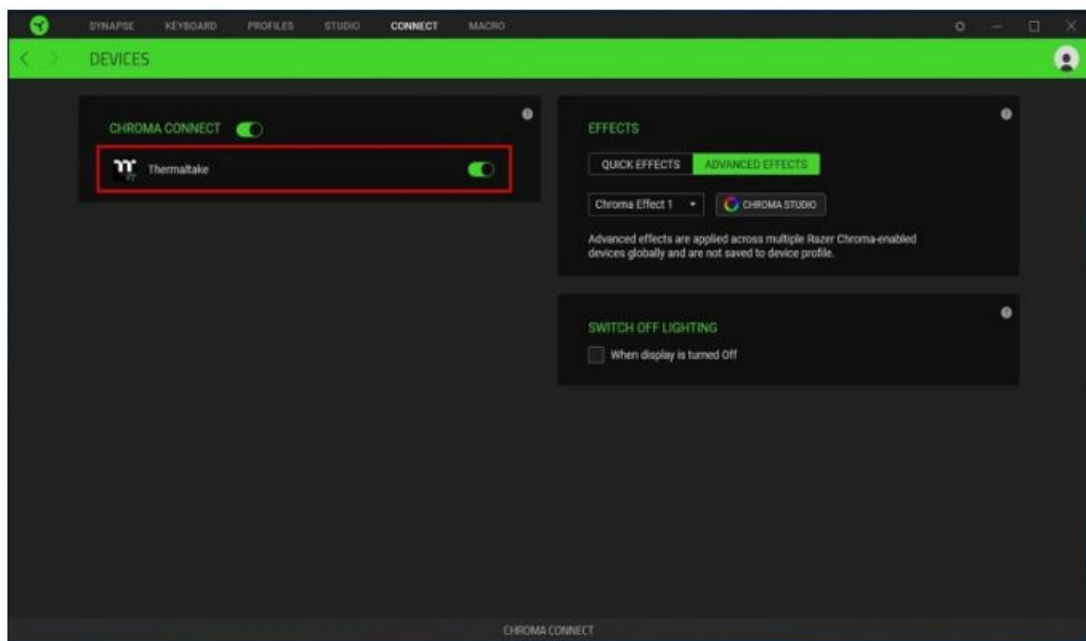


<https://www.razer.com/campaigns/chroma-mania/chroma-collection> (Razer products supported list)

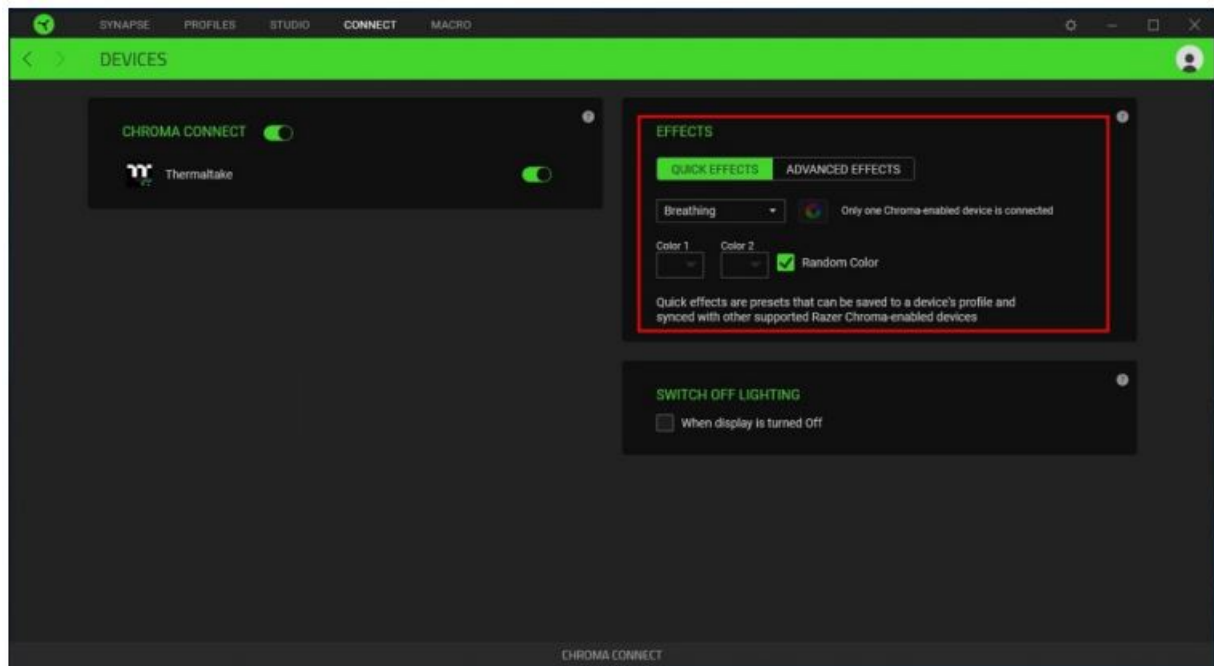
Open “RAZER SYNAPSE” and Enable “TT RGB PLUS” Connection



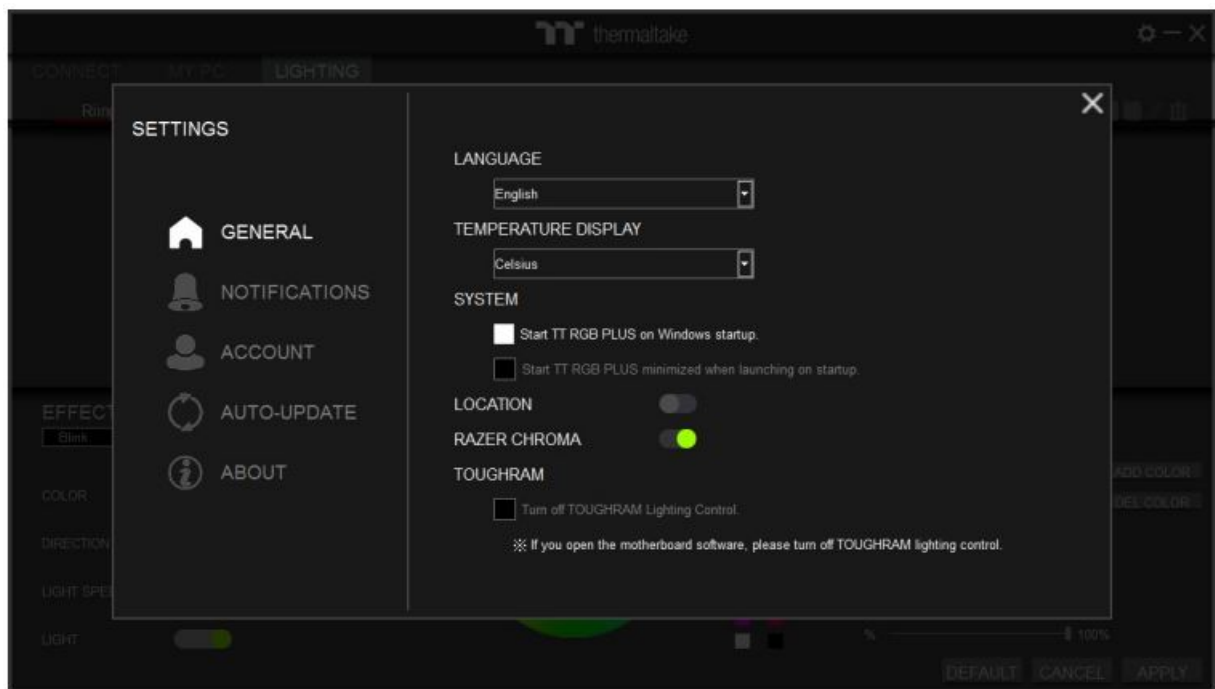
Click “CONNECT” and enable “Thermaltake” label.



Set lighting effect. You can customize lighting effects yourself. Sync “TT RGB PLUS” with Razer Chroma Effects.



Click gear icon to enter the settings menu and select “GENERAL”, then enable “RAZER CHROMA”.



TT RGB PLUS supported products

Chassis:

- DistroCase™ 350P Mid Tower Chassis.
- View 71 Tempered Glass RGB Plus Edition
- View 21 Tempered Glass RGB Plus Edition
- Level 20
- Level 20 GT RGB Plus
- View 91 Tempered Glass RGB Edition

Case Fan:

- SWAFAN RGB Radiator Fan
- TOUGHFAN RGB Radiator Fan
- Riing Quad RGB Radiator Fan
- Riing Trio RGB Radiator Fan
- Riing Duo RGB Radiator Fan
- Riing Plus RGB Radiator Fan
- Pure Plus RGB Radiator Fan

AIO Liquid Cooling:

- Floe Ultra RGB
- Floe DX RGB
- Floe Riing RGB
- Floe RC Ultra
- TOUGHLIQUID Ultra

Custom Liquid Cooling:

- Pacific Lumi Plus
- Pacific W4 Plus CPU Water Block
- Pacific W5 CPU Water Block
- Pacific W6 CPU Water Block (AMD Ryzen Threadripper TR4)
- Pacific W7 Plus CPU Water Block
- Pacific MX1 Plus CPU Water Block
- Pacific MX2 Ultra CPU Water Block
- Pacific VGA Plus GPU Waterblock
- Pacific PR12/22/32-D5 Plus
- Pacific Core P5 DP-D5 Plus Distro-Plate with Pump Combo
- Pacific DP100-D5 Plus Distro-Plate with Pump Combo
- Pacific DP200-D5 Plus Distro-Plate with Pump Combo
- Pacific Core P6 DP-D5 Plus
- Pacific Core P8 DP-D5 Plus
- Pacific TF2 Temperature and Flow Indicator
- Pacific CL/RL 360 RGB Radiator
- Pacific RGB Plus Fittings

Memory:

- TOUGHRAM
- TOUGHRAM RC
- TOUGHRAM
- TOUGHRAM RGB
- TOUGHRAM XG RGB
- TOUGHRAM Z-ONE
- TOUGHRAM Z-ONE RGB
- TOUGHRAM RC
- Pacific A1 DDR4 RAM Water Block
- Pacific A2 Ultra Memory Water Block
- Pacific R1 Plus DDR4 Memory Lighting Kit
- Pacific R2 Ultra Memory LCD Monitor Kit
- Divider 550 TG Ultra LCD Monitor
- TT 3.9-inch LCD Panel Monitor

Power Supply:

- Toughpower iRGB PLUS Series
- Toughpower DPS G RGB Series

TT SYNC supported Thermaltake gaming products

Keyboards:

- TT Premium X1 RGB Gaming Keyboard
- ARGENT K5 RGB Gaming Keyboard
- ARGENT K6 RGB Gaming Keyboard
- Level 20 RGB Gaming Keyboard
- Level 20 GT RGB Gaming Keyboard

Mice:

- NEMESIS SWITCH Optical RGB
- IRIS Optical RGB
- Level 20 RGB Gaming Mouse
- ARGENT M5 RGB Gaming Mouse

Mouse Pads:

- Level 20 RGB Gaming Mouse Pad
- Level 20 RGB Extended Gaming Mouse Pad
- M900 XXL RGB Mouse Pad
- ARGENT MP1 RGB Gaming Mouse Pad

Mice Accessories:

ARGENT MB1 RGB Mouse Bungee

Headsets:

- CRONOS Riing RGB 7.1
- RIING Pro RGB 7.1 Gaming Headset
- ARGENT H5 RGB 7.1 Gaming Headset

Headset Accessories:

- E1 RGB Gaming Headset Stand
- ARGENT HS1 RGB Headset Stand

Gaming Desks:

Level 20 BattleStation RGB Gaming Desk

The following products are not supported

- TT RGB PLUS 2.0 does not support lighting control for Toughpower DPS G Series, Toughpower DPS Series and Smart DPS G Series.
- TT RGB PLUS 2.0 does not support Riing 12/14 RGB Radiator Fan.

TT RGB PLUS lighting effects supports third-party products

ViewSonic:

- ELITE XG240R
- ELITE XG270QC
- ELITE XG270R
- ELITE XG350R-C

DRAM:

- T-FORCE XCALIBUR RGB DDR4 Memory Module
- T-FORCE DELTA RGB DDR4 Memory Module
- T-FORCE NIGHT HAWK RGB DDR4 Memory Module

Motherboard:


MSI Motherboard

Nanoleaf:

- NanoLeaf Light Panel
- NanoLeaf Canvas

The software interface may vary with feature updates, please download the latest software version from www.thermaltake.com

Documents / Resources

	<p>thermaltake TT RGB Plus 2.0 Software [pdf] User Manual</p> <p>TT RGB Plus 2.0, Software, TT RGB Plus 2.0 Software</p>
---	--

References

-  [ThermalTake](#)
-  [Amazon.com](#)
-  [DPS G PC APP 3.0](#)
-  thermaltake.com/downloads