

thermaltake GEA-GDP-DPMBLK-01 Pegboard Software Control and Monitoring



thermaltake GEA-GDP-DPMBLK-01 Pegboard Software Control and Monitoring Instruction Manual

[Home](#) » [thermaltake](#) » thermaltake GEA-GDP-DPMBLK-01 Pegboard Software Control and Monitoring Instruction Manual 

Contents

- [1 thermaltake GEA-GDP-DPMBLK-01 Pegboard Software Control and Monitoring](#)
- [2 Specifications](#)
- [3 Product Using Instruction](#)
- [4 FAQs](#)
- [5 SAFETY INSTRUCTION](#)
- [6 PARTS](#)
- [7 INSTALLATION INSTRUCTION](#)
- [8 Documents / Resources](#)
 - [8.1 References](#)
- [9 Related Posts](#)



thermaltake GEA-GDP-DPMBLK-01 Pegboard Software Control and Monitoring



Specifications

Model Number	GEA-GDP-DPMBLK-01
--------------	-------------------

Product Using Instruction

• Safety Instructions

- Before you begin, read the entire instruction manual to ensure safe installation and assembly.
- If you have any questions or doubts about these instructions or the product's components, contact your place of purchase.

• The following are key warnings to consider:

- Ensure that the product's load does not exceed the maximum limit, as instability could result in personal injury.
- Protect power cords from being pinched or damaged during installation and assembly.
- Do not use the product if any parts are missing, damaged, or compromised.
- Keep components out of children's reach to prevent choking hazards.
- Inspect the product regularly to ensure it is secure and to maintain its condition.

• Maintenance & Cleaning

- To maintain the product in good condition, perform regular inspections, tighten any loose screws, and keep the product clean.
- Do not use abrasive cleaners or solvents, as they may damage the finish of the product. Use a soft, dry cloth for cleaning.

• Installation Overview

- The instruction manual provides a visual guide to the components and the assembly process. The components include:
 - **A** – Pegboard
 - **B (x2)** – Clamps
 - **C (x2)** – Clamp Handle
 - **D (x1)** – Shelf Bracket
 - **E (x2)** – Cable Clip
 - **F (x3)** – Multi-Holder
 - **G (x4), H (x4)** – Screws
 - **I (x1)** – Hex Key
- The manual demonstrates a horizontal and vertical installation method for affixing the pegboard to a desk surface.
- **Assembly Instructions**
 - Choose between horizontal or vertical installation and attach the clamps (B) to the pegboard (A) using screws (G, H) and the hex key (I).
 - Adjust the clamps to fit the desk thickness, which can range from 19-60mm.
 - Attach accessories such as the shelf bracket (D), cable clips (E), and multi-holders (F) to the pegboard.

• Diagrams & Visual Aids

- The diagrams provide a clear, step-by-step visual representation of the installation process, including the orientation of the pegboard, the placement of clamps, and the attachment of accessories.

• Additional Information

- The manual includes multilingual instructions to support a wide range of users. For specific instructions in your preferred language, consult the corresponding section of the manual.

FAQs

What is the maximum desk thickness the pegboard clamps can accommodate?

The clamps can accommodate a desk thickness ranging from 19 to 60mm.

Can the pegboard be installed both horizontally and vertically?

Yes, the pegboard can be installed in both orientations as shown in the diagrams.

How often should I check and maintain the pegboard?

It is recommended to inspect the pegboard and its attachments regularly to ensure stability and safety.

What should I use to clean the pegboard?

Use a soft, dry cloth to clean the pegboard. Avoid abrasive cleaners or solvents.

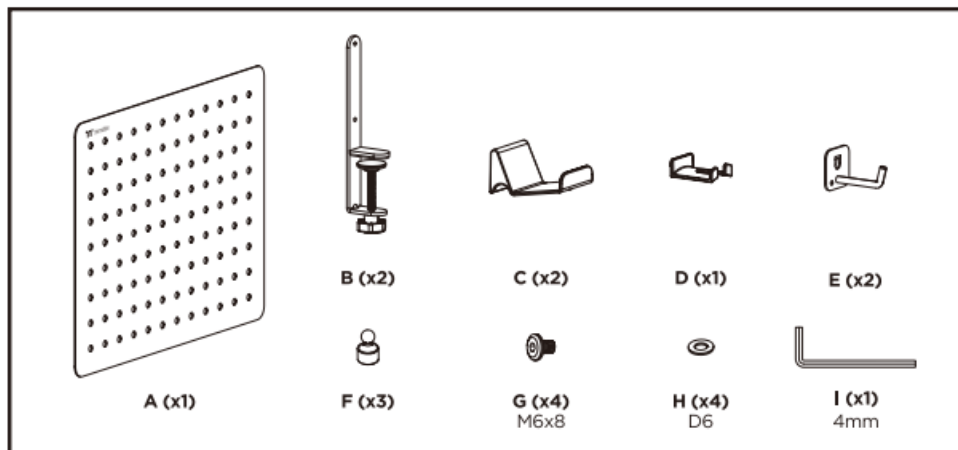
SAFETY INSTRUCTION

Read the entire instruction manual before you start installation and assembly. If you have any questions regarding any of the instructions or warnings, please contact your local distributor for assistance.

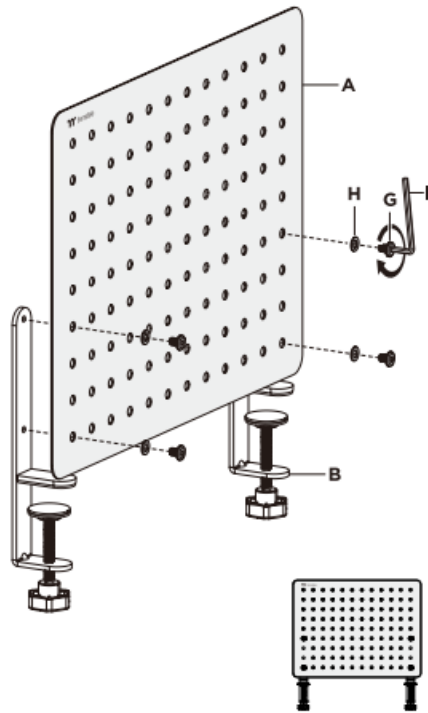
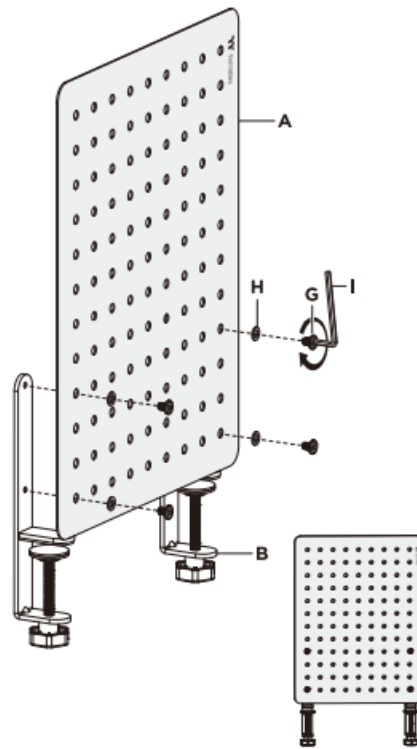
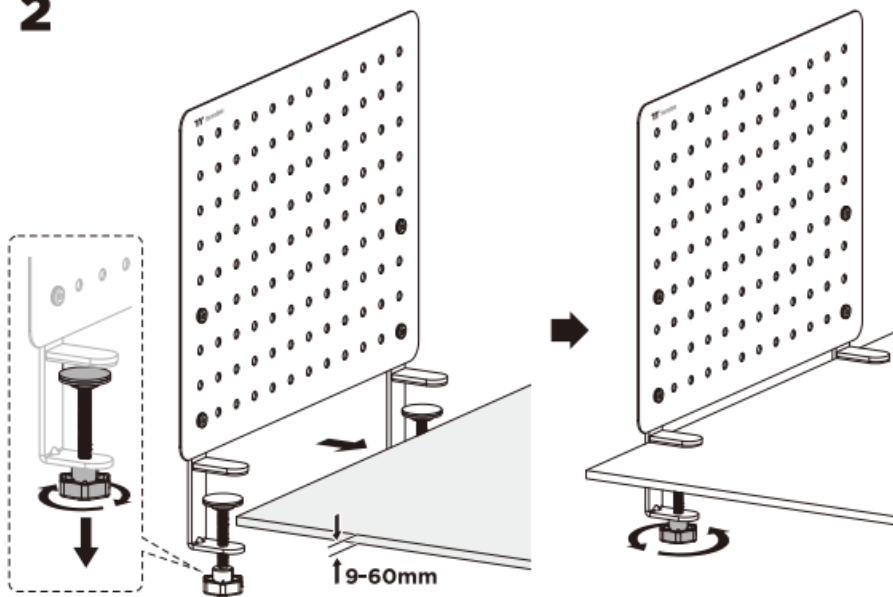
CAUTION: Use with products heavier than the rated weights indicated may result in instability causing possible injury.

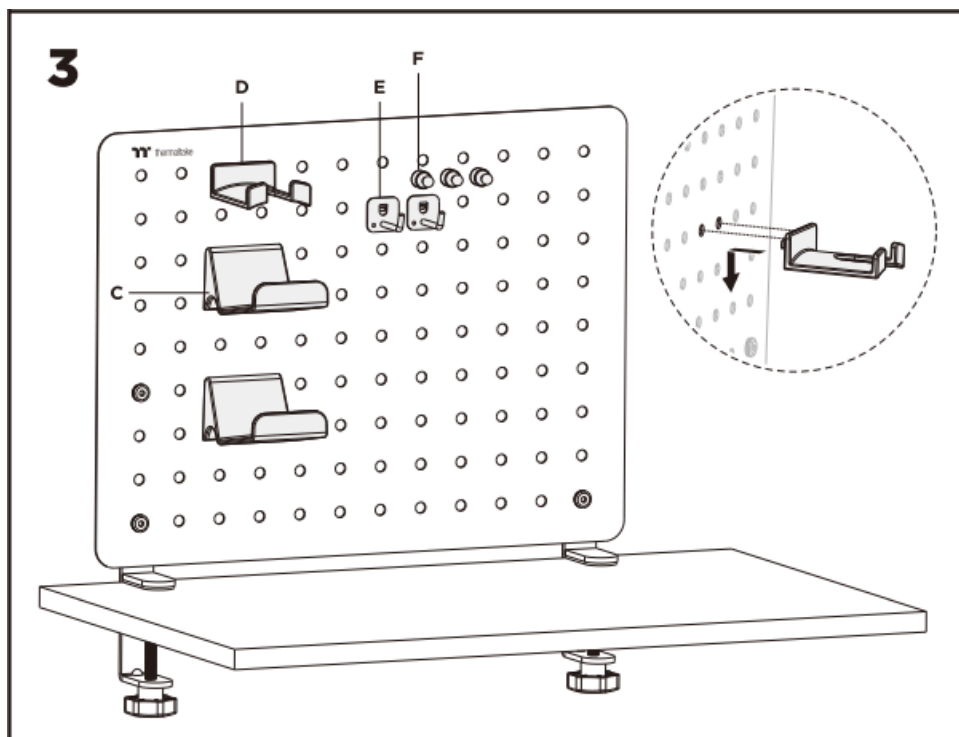
- Please closely follow the assembly instructions. Improper installation may result in damage or serious personal injury.
- Safety gear and proper tools must be used. This product should only be installed by professionals.
- Make sure that the supporting surface will safely support the combined weight of the equipment and all attached hardware and components.
- Use the mounting screws provided and **DO NOT OVER-TIGHTEN** mounting screws.
- This product contains small items that could be a choking hazard if swallowed. Keep these items away from children.
- This product is intended for indoor use only. Using this product outdoors could lead to product failure and personal injury.
- **IMPORTANT:** Ensure that you have received all parts according to the component checklist before installation. If any parts are missing or faulty, contact your place of purchase for a replacement.
- **MAINTENANCE:** Check that the product is secure and safe to use at regular intervals (at least every three months).

PARTS




INSTALLATION INSTRUCTION

1**HORIZONTAL INSTALLATION****OR****VERTICAL INSTALLATION****2**



Documents / Resources

	<p>thermaltake GEA-GDP-DPMBLK-01 Pegboard Software Control and Monitoring [pdf] Instruction Manual</p> <p>GEA-GDP-DPMBLK-01 Pegboard Software Control and Monitoring, GEA-GDP-DPMBLK-01, Pegboard Software Control and Monitoring, Software Control and Monitoring, Control and Monitoring, Monitoring</p>
---	--

References

- [User Manual](#)

[Manuals+.](#) [Privacy Policy](#)

This website is an independent publication and is neither affiliated with nor endorsed by any of the trademark owners. The "Bluetooth®" word mark and logos are registered trademarks owned by Bluetooth SIG, Inc. The "Wi-Fi®" word mark and logos are registered trademarks owned by the Wi-Fi Alliance. Any use of these marks on this website does not imply any affiliation with or endorsement.