



THERMALRIGHT AXP90-X47 Full Low Profile Desktop CPU Cooler Installation Guide

[Home](#) » [THERMALRIGHT](#) » THERMALRIGHT AXP90-X47 Full Low Profile Desktop CPU Cooler Installation Guide 

THERMALRIGHT AXP90-X47 Full Low Profile Desktop CPU Cooler Installation Guide

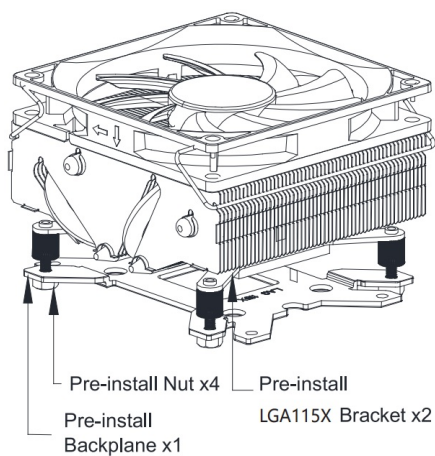


Contents

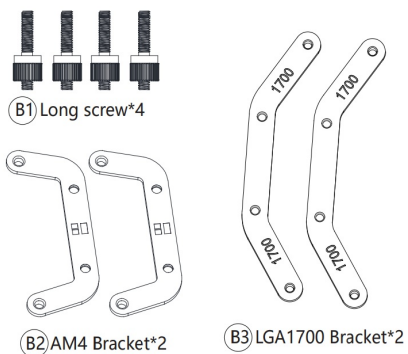
- [1 parts list](#)
- [2 Documents / Resources](#)
- [3 Related Posts](#)

parts list

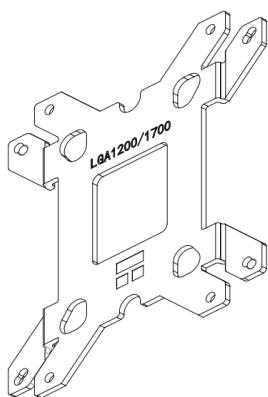
- A Heatsink x1



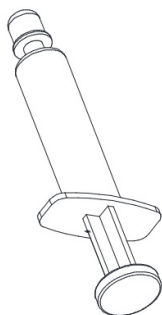
- **B Bracket'2+2 + screw *4**



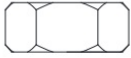
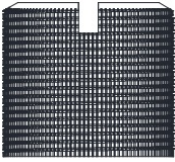
- **C Backplane x1**



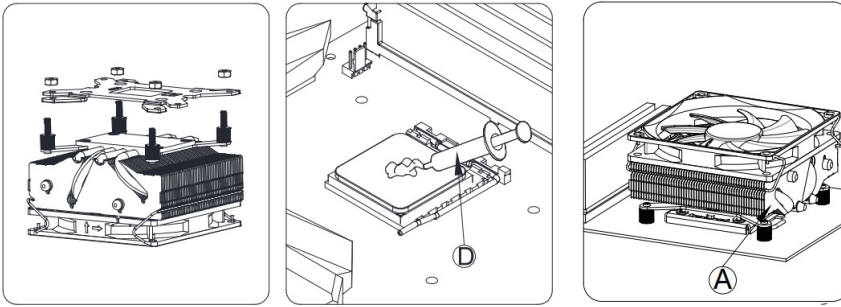
- **D thermal Greasa x1**



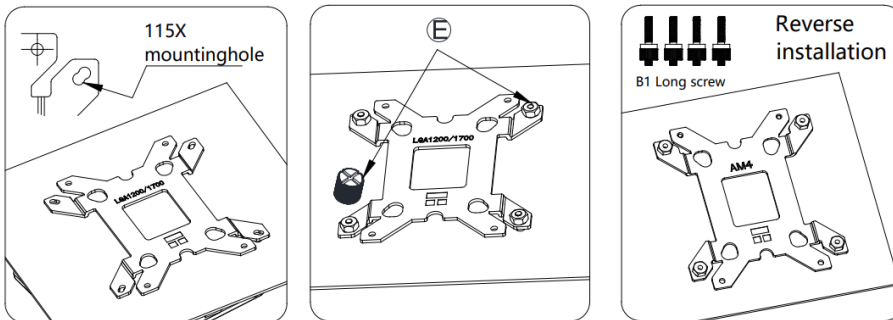
- **E Nut x1 +tool x1**



INTEL LGA 115X /1200

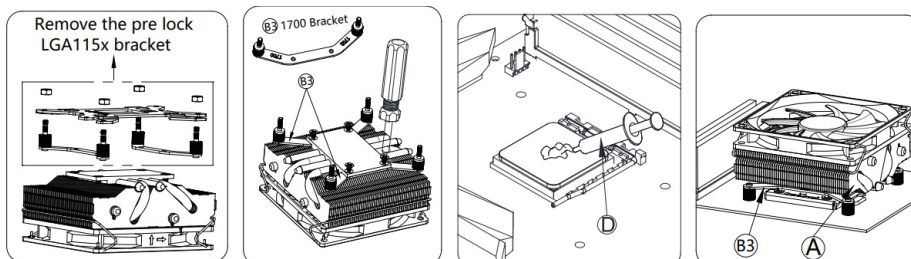


Remove the pre-installed nut X4. back plate on the radiator; CPU apply the heat conduction paste to push the four support screws of the radiator through the main board hole and press the CPU

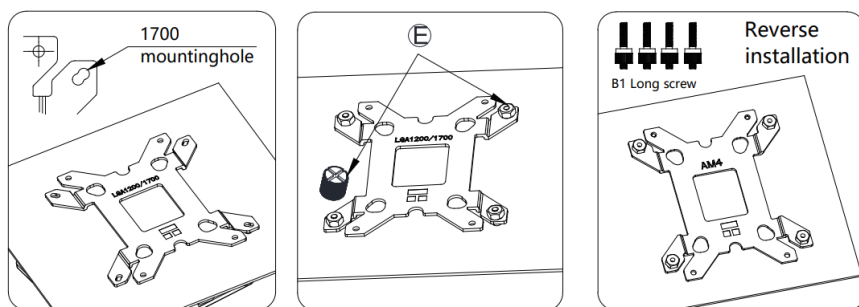


Install backplane on the back of the motherboard, and pay attention to the backplane direction: AM4 is the sticker. Close the main board surface, and use the nut auxiliary tool to fix the screw on the bottom of the main board. Pay attention to the direction that the back board fits the main board, and the insulation sheet must be pasted. If there is power supply interference on the back of the motherboard, please use B1 long screw to install the backplane reversely. LGA 115x is to the motherboard surface, and fix the nuts on the bottom screw of the motherboard.

INTEL LGA 1700

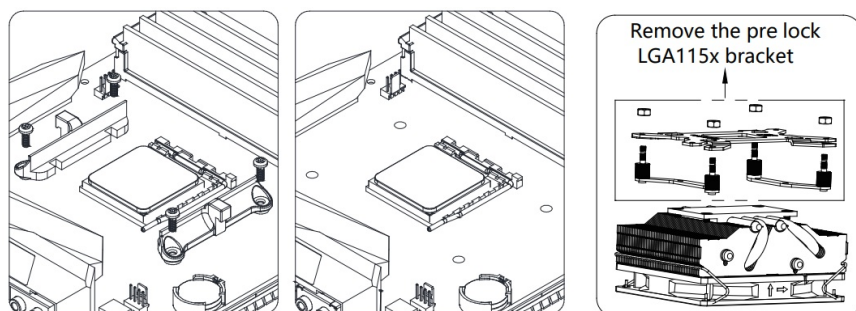


Remove the pre installed back plate of the radiator and the support of Lga115x, and replace the double head screws of Lga115x. On the Lga1700 bracket, coat the CPU with heat transfer paste, and press the pre locked radiator according to the corresponding The hole position is installed on the main board

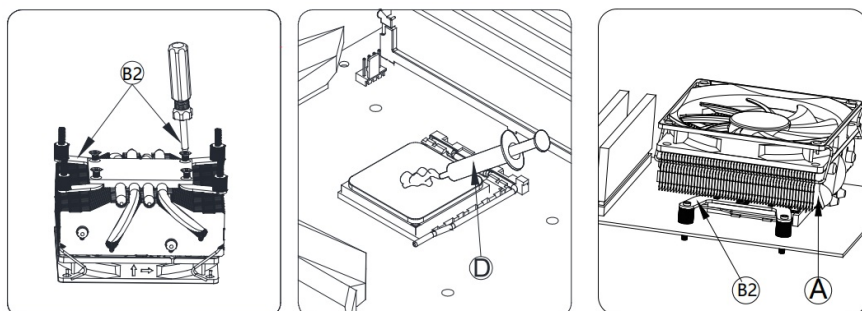


Install backplane on the back of the motherboard, and pay attention to the backplane direction: AM4 is the sticker. Close the main board surface, and use the nut auxiliary tool to fix the screw on the bottom of the main board. Pay attention to the direction that the back board fits the main board, and the insulation sheet must be pasted. If there is power supply interference on the back of the motherboard, please use B1 long screw to install the backplane reversely. LGA 115x is to fit the motherboard surface, and fix the nuts on the bottom screw of the motherboard.

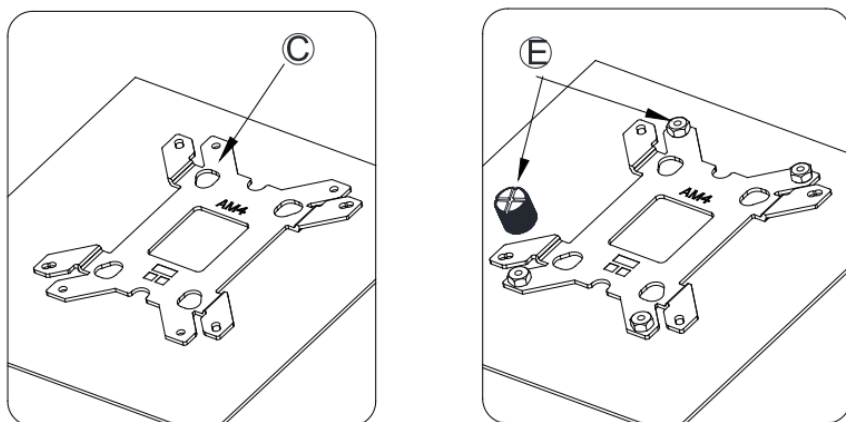
AMD AM4



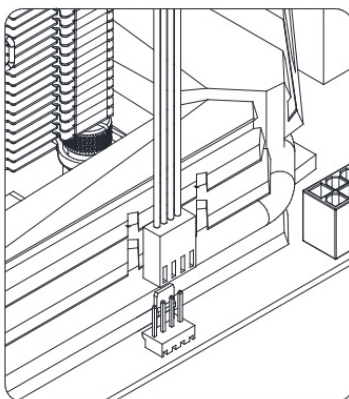
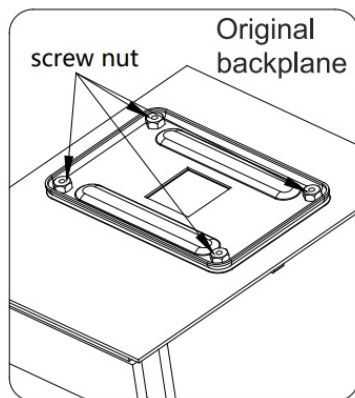
Remove the original plastic support and back plate of main board with screwdriver, remove the pre installed nut x4. back plate, support x2. on radiator



The distribution support x2 is x2 through the copper bottom of the radiator with four small screws, the distribution support x2 is fixed with the radiator, the heat conduction paste is applied CPU, and the four support screws of the radiator are pressed through the copper bottom of the radiator in the main board hole CPU. pressed



Install backplane on the back of the motherboard. The backplane direction: LGA 115x is to fit the motherboard surface. Use the nut auxiliary tool to fix the screws on the bottom of the motherboard. Pay attention to the direction of the backplane sticking to the motherboard, the insulation sheet must be pasted



Fan wiring installation

- If there is power supply interference on the back of the motherboard, please install the backplane reversely. LGA 115x s to fit the motherboard surface, and fix the nuts on the bottom screw. of the motherboard.
- Insert fan 4-pin connector into main board CPU_FAN4 pin socket

Reminder

1. Remove the copper bottom protective film before using the radiator.
2. Pay attention to the fitting direction of the backplane and the motherboard.
3. One side of the back board pasted with insulating sheet is in the direction of the main board

www.thermalright.com

Documents / Resources

	<p>THERMALRIGHT AXP90-X47 Full Low Profile Desktop CPU Cooler [pdf] Installation Guide AXP90-X47 Full Low Profile Desktop CPU Cooler, AXP90-X47, Full Low Profile Desktop CPU C ooler, Low Profile Desktop CPU Cooler, Profile Desktop CPU Cooler, Desktop CPU Cooler, CPU Cooler, Cooler</p>
--	---