



# Therm TE-02Pro Reusable Temperature Data Logger User Manual

[Home](#) » [Therm](#) » Therm TE-02Pro Reusable Temperature Data Logger User Manual 

## **Therm** ELC TOOLS THAT PROS TRUST **TE-02 PRO PDF** Temperature Data Logger User Manual

### Contents

- [1 Product Introductions](#)
- [2 Main feature](#)
- [3 First Time Set Up](#)
- [4 Quick start](#)
- [5 Configuration of a ThermElc TE-02 PRO](#)
- [6 Operation Functions](#)
- [7 LCD Display Instructions](#)
- [8 Battery Replacement](#)
- [9 Documents / Resources](#)
  - [9.1 References](#)

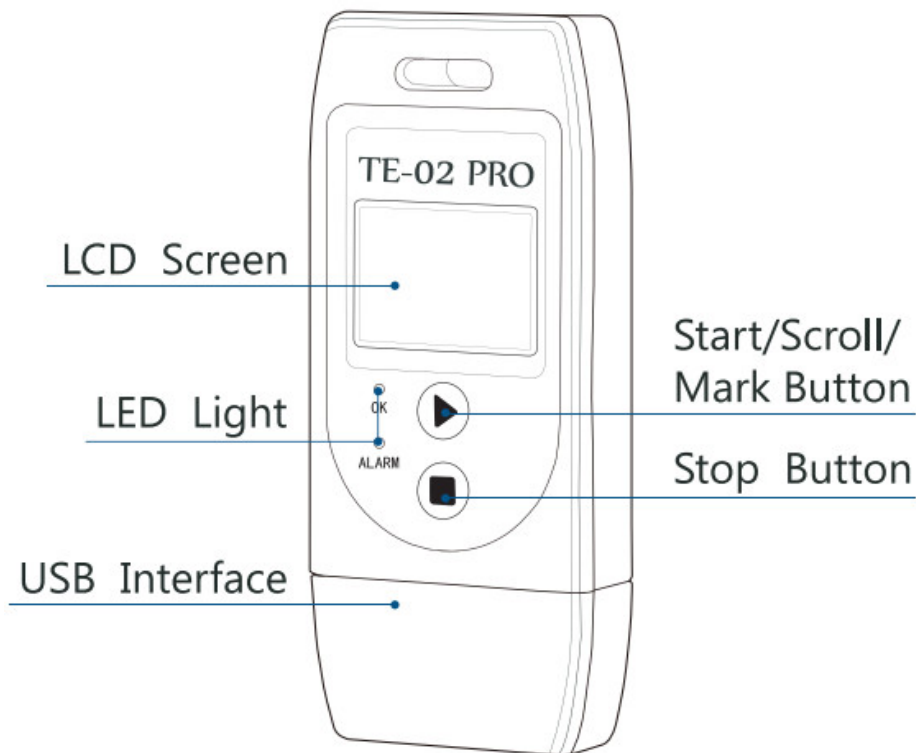
## Product Introductions

ThermElc TE-02 PRO is used for monitoring temperature of the sensitive goods during storage and transportation. After the recording is finished, the ThermElc TE-02 PRO is connected to any USB port and automatically generates a PDF report with the temperature logging results. No additional software is required to read out the ThermElc TE-02 PRO.

## Main feature

- Multiple use logger

- Auto PDF logger
- Auto generate CSV reports
- Logging of 32,000 values
- Interval of 10 seconds to 18 hours
- No special device driver required
- MKT alarm and Temperature Alarm



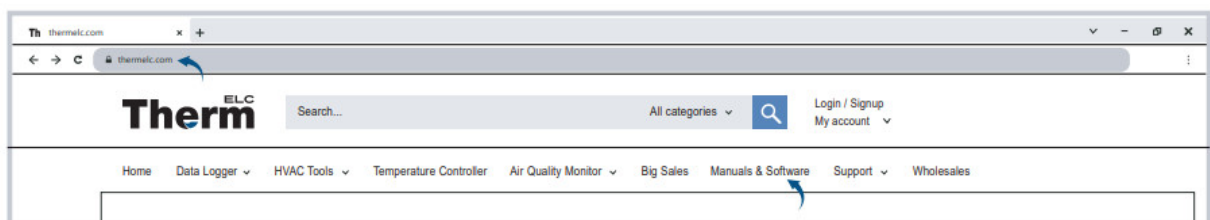
#### PLEASE NOTE:

After the device is configured for the first time or after re-configuration, please leave the device in an open environment over 30 minutes. This will ensure the device is calibrated with the accurate current temperature.

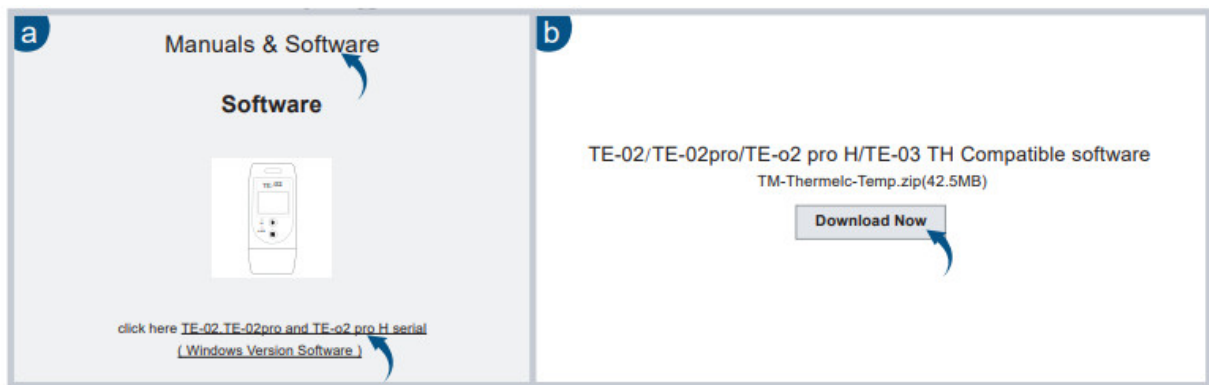
#### First Time Set Up

1. Open your Internet browser and type in [thermelc.com](http://thermelc.com).

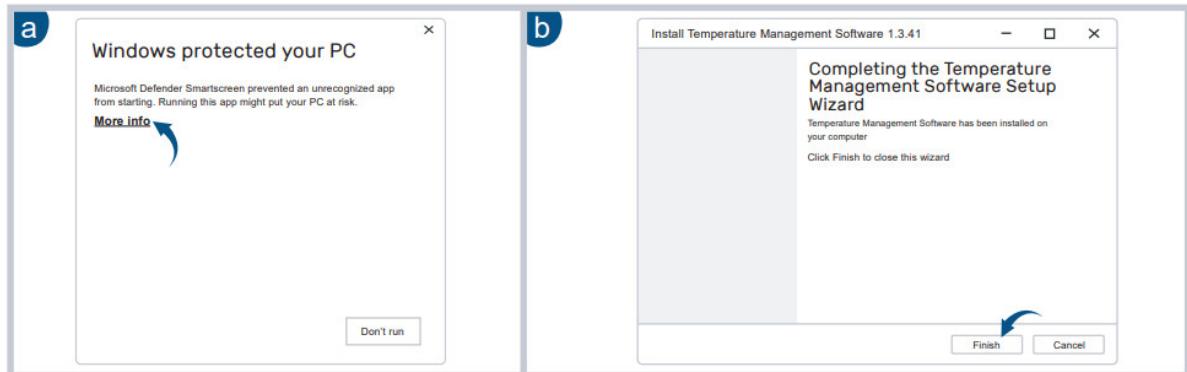
Navigate to the menu bar, click on 'Manuals & Software'.



2. Select the appropriate software for your model. Click on the download link or the model picture to access the software download page.

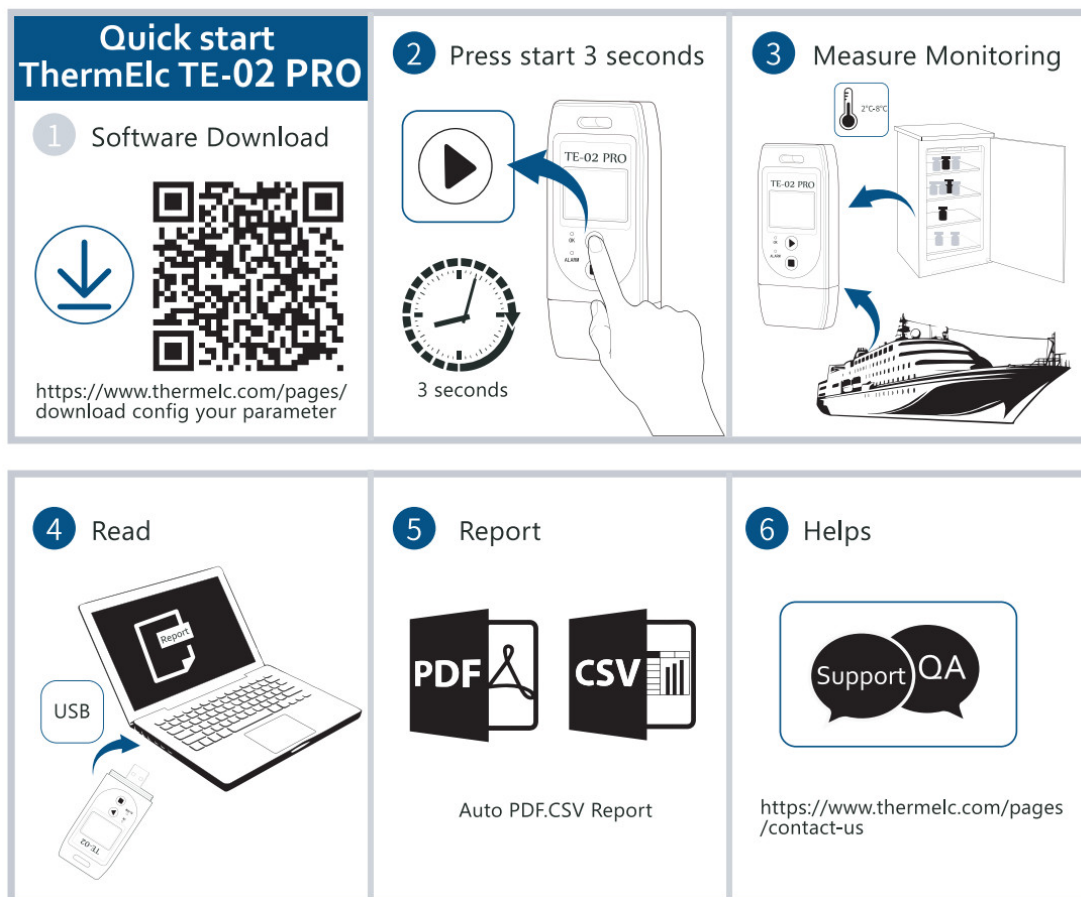


3. Once the download is complete, click on the downloaded file to initiate the installation. Follow the steps to complete the installation process.



4. After installation, you can access the Temperature Management Software. by clicking on the shortcut icon on your desktop.
5. Full video instructions please go to [youtube.com/@thermelc2389](https://youtube.com/@thermelc2389) Click Playlists – How to use your ThermELC Data logger

## Quick start



## Configuration of a ThermElc TE-02 PRO

The device can be configured using the free Data Management software.

- Time zone: UTC
- Temperature scales: °C /°F
- Screen display: Always on/ Timed
- Log interval: 10s to 18 hours
- Start delays: 0/ timed
- Stop mode: Press button/ disabled
- Time format: DD/MM/YY or MM/DD/YY
- Start mode : Press button or Timed
- Alarm setting: Upper Limit and Lower Limit
- Description : Your reference which will appear on the report

## Operation Functions

### 1. Start Recording

Press and hold the PLAY ( ► ) button for approximately 3sec.The 'OK' light is on and the ( ► ) or ( WAIT ) indicates the logger is started.

### 2. Mark

When the device is recording, press and hold the PLAY ( ► ) button for more than 3sec, and the screen will switch to the 'MARK' interface. The number of 'MARK' will increase by one, indicating data was marked successfully.

(Note: One record interval can mark one time only, the logger can mark 6 times in one recording trip. Under status of start delay, the mark operation is disabled.)

### 3. Stop Recording

Press and hold the STOP ( ■ ) button for more than 3sec until the 'ALARM' light is on, and the STOP ( ■ ) symbol displays on the screen, indicating stopping recording successfully.

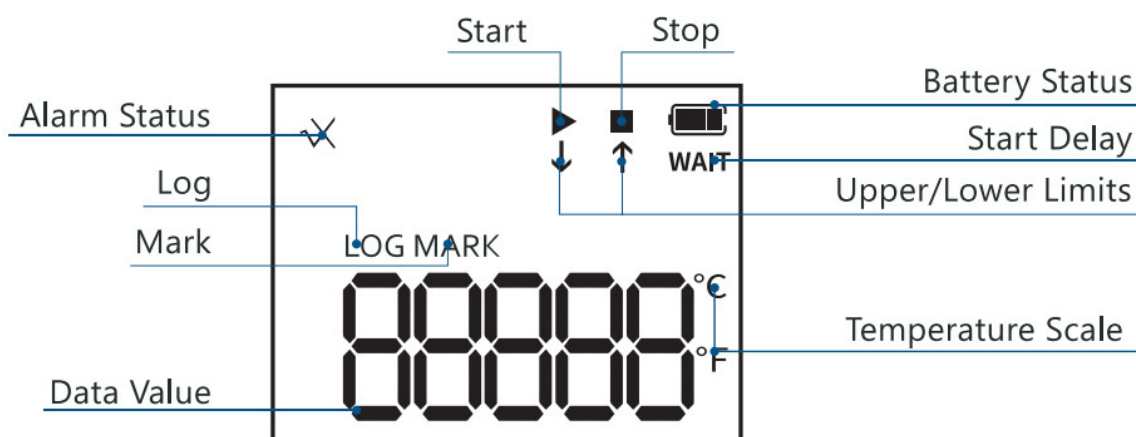
(Note: If the logger is stopped during the status of start delay, a PDF report is generated when inserted into PC but without data.) During normal recording process, shortly press PLAY ( ► ) to switch to different display interface.

The interfaces shown in sequence are respectively: Real-time Temperature > LOG > MARK > Temperature Upper Limit > Temperature Lower Limit.

### 4. Get Report

Connect logger to PC via USB, and it will auto-generate PDF and CSV file.

## LCD Display Instructions



►	Data logger is recording
■	Data logger has stopped recording
WAIT	Data logger is in Start Delay status
✓	Temperature is within the limited range
X and ↑	Measured temperature exceeds its upper limit
X and ↓	Measured temperature exceeds its lower limit


## Battery Replacement



Technical Specifications	Video instructions
 <a href="https://thermelc.com/pages/support">https://thermelc.com/pages/support</a>	 <a href="https://www.youtube.com/channel/UC1NbEXALU3GHMIKydeSvfbQ/videos">https://www.youtube.com/channel/UC1NbEXALU3GHMIKydeSvfbQ/videos</a>

**Therm** <sup>ELC</sup>  
 TOOLS THAT PROS TRUST  
<https://www.thermelc.com>  
[sales@thermelc.com](mailto:sales@thermelc.com)  
 +44 (0)207 1939 488

## Documents / Resources

	<a href="#">Therm TE-02Pro Reusable Temperature Data Logger</a> [pdf] User Manual TE-02Pro Reusable Temperature Data Logger, TE-02Pro, Reusable Temperature Data Logger, Temperature Data Logger, Data Logger
---	--

## References

- [User Manual](#)