



Therm TE-02 PRO Reusable Temperature Data Logger User Manual

[Home](#) » [Therm](#) » Therm TE-02 PRO Reusable Temperature Data Logger User Manual 

Therm TE-02 PRO Reusable Temperature Data Logger User Manual



Contents

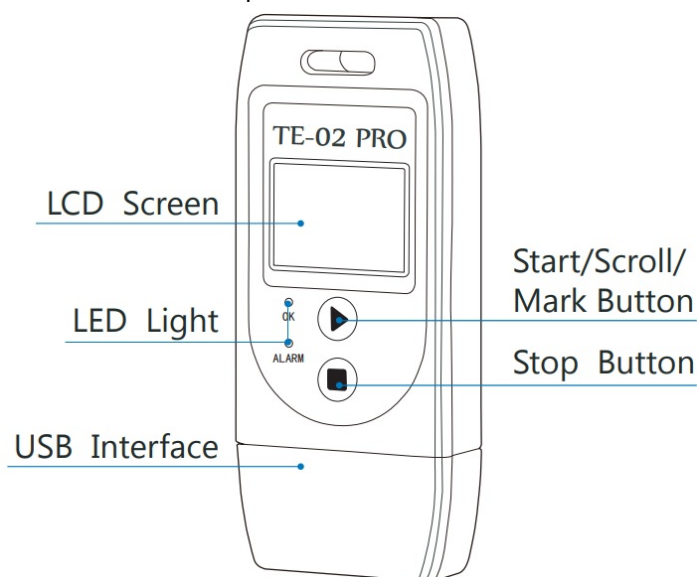
- 1 Product Introductions
- 2 Main feature
- 3 Quick start
- 4 Configuration of a ThermElc TE-02 PRO
- 5 Operation Functions
- 6 LCD Display Instructions
- 7 Battery Replacement
- 8 Technical Specifications
- 9 Video instructions
- 10 Documents / Resources
 - 10.1 References
- 11 Related Posts

Product Introductions

ThermElc TE-02 PRO is used for monitoring temperature of the sensitive goods during storage and transportation. After the recording is finished, the ThermElc TE-02 PRO is connected to any USB port and automatically generates a PDF report with the temperature logging results. No additional software is required to read out the ThermElc TE-02 PRO.

Main feature

- Multiple use logger
- Auto PDF logger
- Auto generate CSV reports
- Logging of 32,000 values
- Interval of 10 seconds to 18 hours
- No special device driver required
- MKT alarm and Temperature Alarm



PLEASE NOTE: Technical Specifications Video instructions After the device is configured for the first time or after re-configuration, please leave the device in an open environment over 30 minutes. This will ensure the device is calibrated with the accurate current temperature.

Quick start

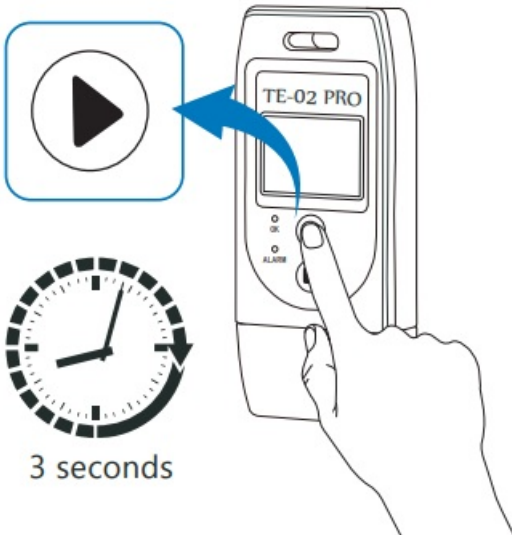
1. Software Download



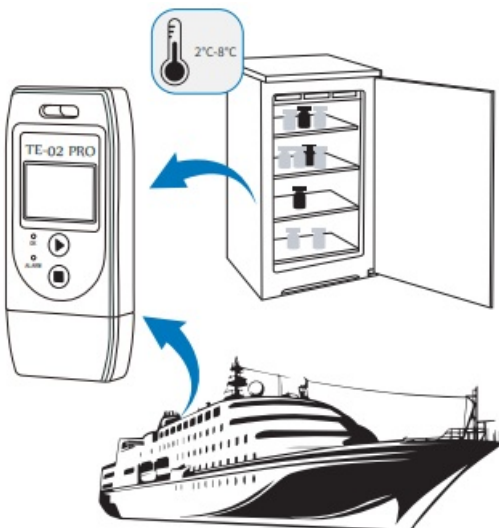
<https://www.thermelc.com/pages/>

download config your paramete

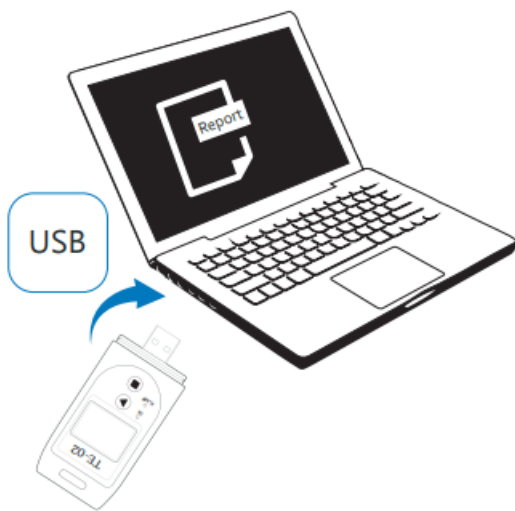
2. Press start 3 seconds



3. Measure Monitoring



4. Read



5. Report



Auto PDF.CSV Report

6. Helps



<https://www.thermelc.com/pages/contact-us>

Configuration of a ThermElc TE-02 PRO

The device can be configured using the free Data Management software.

- **Time zone:** UTC
- **Temperature scales:** °C /°F
- **Screen display:** Always on / Timed
- **Log interval:** 10s to 18 hours
- **Start delays:** 0/ timed
- **Stop mode:** Press button/ disabled
- **Time format:** DD/MM/YY or MM/DD/YY
- **Start mode :** Press button or Timed
- **Alarm setting:** Upper Limit and Lower Limit

- **Description :** Your reference which will appear on the report

The screenshot shows a configuration interface for a temperature recorder. At the top are four buttons: Read, Save, About, and Exit. The interface is divided into several sections:

- Device Info:** Contains fields for Device ID (TZ0421066463), Device Time (2021/11/04 02:28:25(+1:0)), System Time (2021/11/17 20:34:31), Time Zone (UTC), Temperature Scale (°C/°F), LCD settings (Always bright/Close after), and Temperature Calibration (0).
- Log Setting:** Contains fields for Log Interval, Start Delay, Stop Mode (Press Button), Time Format (DD/MM/YY HH:MM:SS), Startup Mode (Press Button/Timed), and Time Start Time.
- Alarm Setting:** Contains fields for Lower Temperature Limit (2), Upper Temperature Limit (8), and Alarm Delay.
- Description:** A text field containing "Temperature Recorder".
- Hardware:** A field showing "030202000108".

Operation Functions

1. Start Recording

Press and hold the PLAY (▶) button for approximately 3sec. The 'OK' light is on and the (▶) or (WAIT) indicates the logger is started.

2. Mark

When the device is recording, press and hold the PLAY (■) button for more than 3sec, and the screen will switch to the 'MARK' interface. The number of 'MARK' will increase by one, indicating data was marked successfully.

(Note: One record interval can mark one time only, the logger can mark 6 times in one recording trip. Under status of start delay, the mark operation is disabled.)

3. Stop Recording

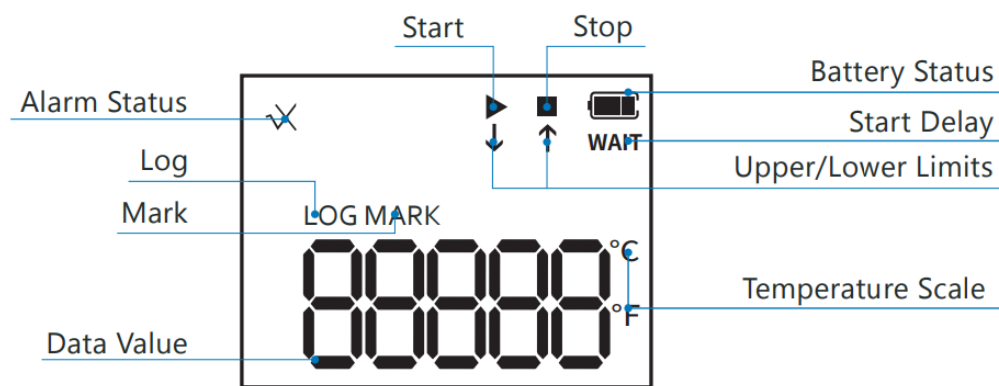
Press and hold the STOP (■) button for more than 3sec until the 'ALARM' light is on, and the STOP () symbol displays on the screen, indicating stopping recording successfully. (Note: If the logger is stopped during the status of start delay, a PDF report is generated when inserted into PC but without data.) During normal recording process, shortly press PLAY (▶) to switch to different display interface.

4. The interfaces shown in sequence are respectively: Real-time Temperature > LOG > MARK > Temperature Upper Limit > Temperature Lower Limit.

5. Get Report

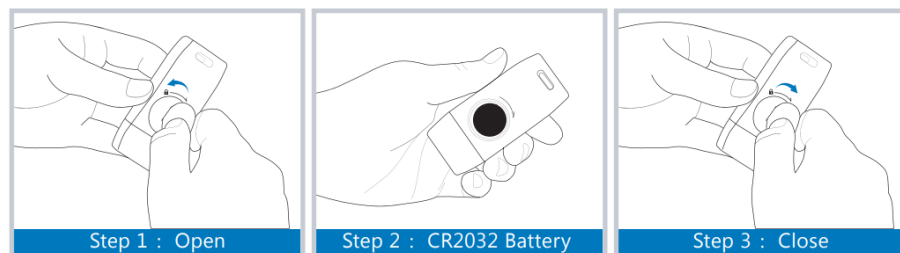
Connect logger to PC via USB, and it will auto-generate PDF and CSV file.

LCD Display Instructions



	Data logger is recording
	Data logger has stopped recording
WAIT	Data logger is in Start Delay status
√	Temperature is within the limited range
x and ↑	Measured temperature exceeds its upper limit
x and ↓	Measured temperature exceeds its lower limit

Battery Replacement



Technical Specifications



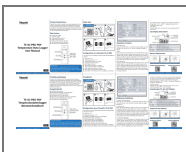
Video instructions



<https://www.thermelc.com/pages/download>
sales@thermelc.com
+44 (0)207 1939 488



Documents / Resources



[Therm TE-02 PRO Reusable Temperature Data Logger](#) [pdf] User Manual
TE-02 PRO Reusable Temperature Data Logger, TE-02 PRO, Reusable Temperature Data Log
ger, Temperature Data Logger, Data Logger, Logger

References

- [Th Temperature Data Logger leading manufacturer – Therm ELC](#)
- [User Manual](#)