

# thecoopidea CP-KB01 TAPPY Wireless Keyboard Set – Hello Kitty User Manual

[Home](#) » [Thecoopidea](#) » thecoopidea CP-KB01 TAPPY Wireless Keyboard Set – Hello Kitty User Manual 

# thecoopidea

Model: CP-KB01

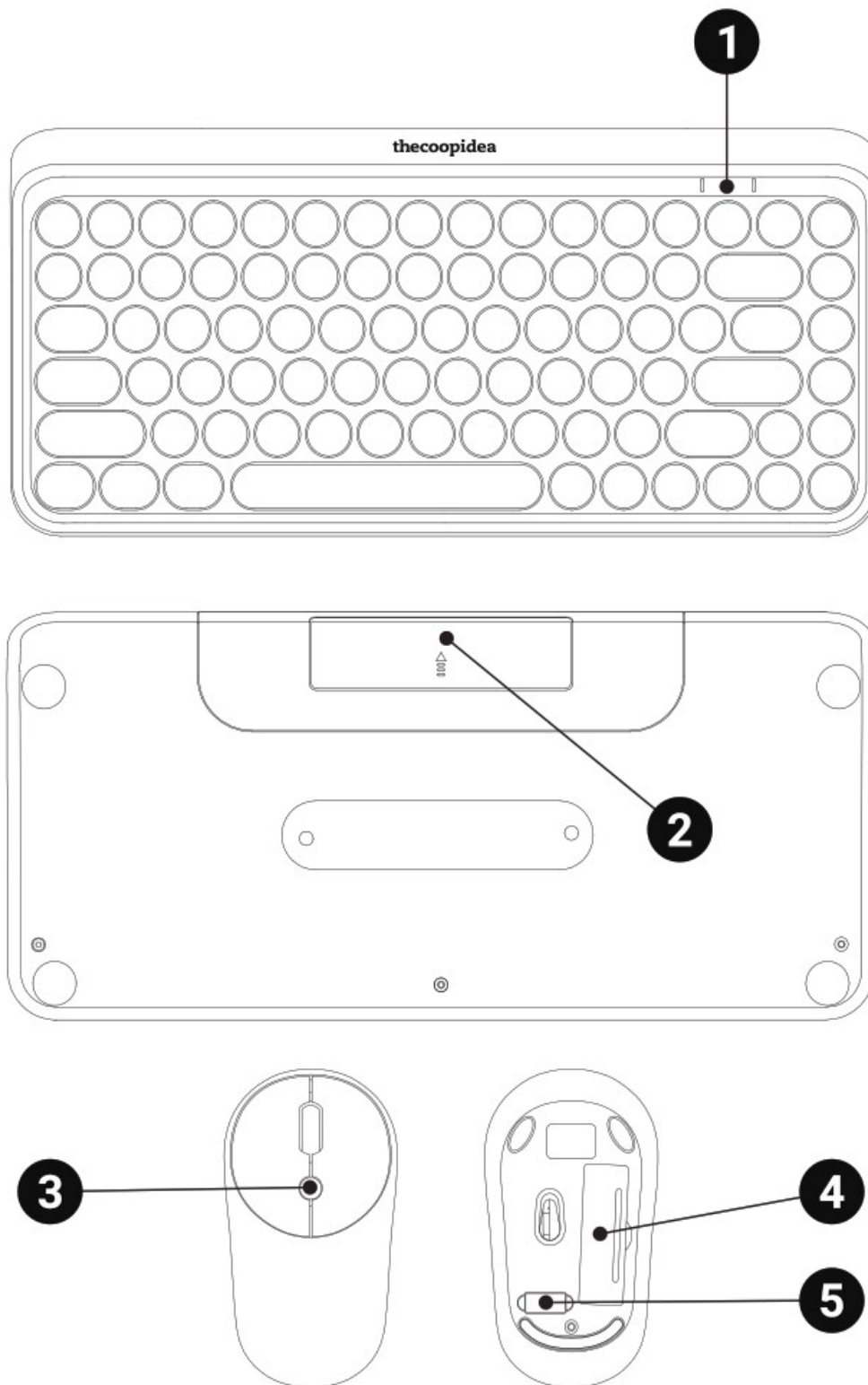
## USER MANUAL TAPPY WIRELESS KEYBOARD & MOUSE SET

### Contents

- [1 Inside the Box](#)
- [2 Keyboard Batteries Installation](#)
- [3 Mouse Battery Installation](#)
- [4 Connecting To Device](#)
- [5 Energy Saving Mode](#)
- [6 Keyboard Hotkeys](#)
- [7 Safety Note](#)
- [8 Specifications](#)
- [9 Warranty Terms & Conditions](#)
- [10 Explanation Of Warning Symbols & Notes](#)
- [11 Documents / Resources](#)
- [12 Related Posts](#)

### Inside the Box

1. TAPPY Wireless Keyboard x1 (Battery Not Included)
2. TAPPY Wireless Mouse x 1 (Battery Not Included)
3. Mouse Pad x 1

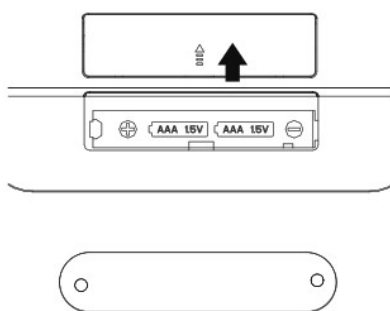


- |   |  |
|---|--|
| 1. LED Indicator<br>2. Battery Compartment (AAA Battery)<br>3. DP! switcher | 4. Battery Compartment (AA Battery)<br>5. Mini Connector |
|---|--|

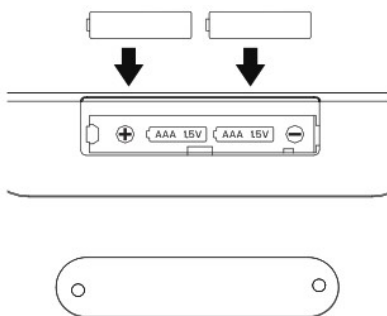


### Keyboard Batteries Installation

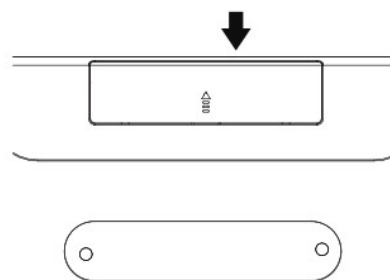
Please prepare 2 AAA alkaline batteries.



1. Open the cover of battery compartment.



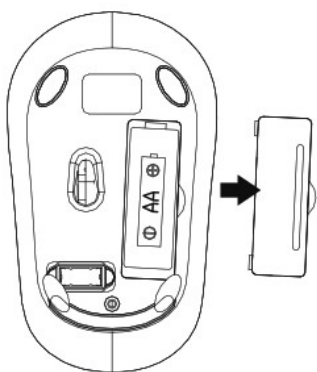
2. Insert 2 AAA alkaline batteries into the battery compartment.



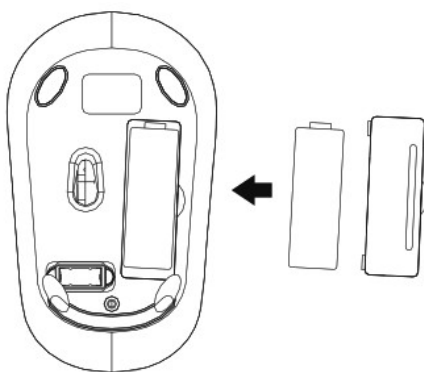
3. Close the battery compartment cover.

## Mouse Battery Installation

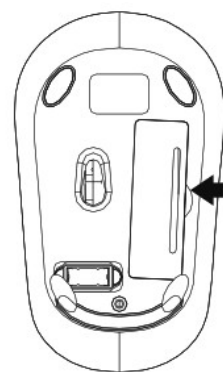
Please prepare one AA alkaline battery.



1. Open the cover of battery compartment.



2. Insert one AA alkaline battery into the battery compartment.

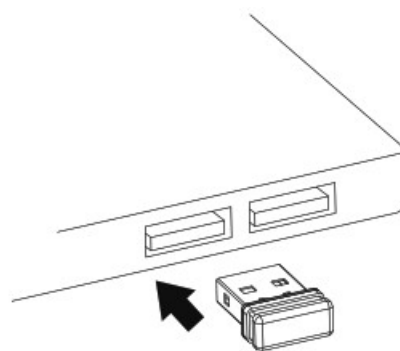


3. Close the battery compartment cover.

## Connecting To Device



1. Take the Mini Connector out from the Wireless Mouse.



2. Plug in the Mini Connector to the USB port of the device.

\*\* TAPPY Wireless Mouse and Keyboard should be connected automatically.

## Energy Saving Mode

TAPPY Wireless Mouse automatically goes into energy saving mode when: Mini Connector is not plugged into any device, or the mouse is no longer in use after 30 minutes. With the energy saving mode turned on, the mouse switches to sleep mode after 8 minutes. To get the mouse out of energy saving or sleep mode, please use the scroll wheel or click any buttons to resume using the mouse.

## Keyboard Hotkeys

FN + ESC = Media Player

FN+F1 = Play/Pause

FN+F2 = Previous Track

FN+F3 = Next Track

FN+F4 = Volume Up

FN+F5 = Volume Down

FN+F6 = Mute

FN+F7 = Web Home

FN+F8 = Search

FN+F9 = My Favorite

FN +F10 = Mail

FN+F11 = Key Lock

FN +F12 = My Computer

## Safety Note

- Protect the product from dirt, moisture and overheating and use in dry rooms only.
- Do not drop the product and do not expose it to any major shocks.
- Do not operate the product outside the power limits given in the specifications.
- Do not modify the product in any way. Doing so voids the warranty.
- Do not continue to operate the product if it becomes visibly damaged.
- Use the product for its intended purpose only.
- Keep this product, as all electrical products, out of the reach of children.
- Do not use the product in the immediate vicinity of heaters or other heat sources or in direct sunlight.
- Dispose of packaging material immediately according to locally applicable regulations.
- Please do not use any alcohol to clean up the printing area of the product.

## Specifications

Battery Type :	Keyboard	: 2 x AAA Alkaline Batteries
	Mouse	: 1 x AA Alkaline Battery
Dimensions :	Keyboard	: 32 x 15 x 3 cm (L x W x H)
	Mouse	: 11 x 6 x 3.5 cm (L x W x H)
	Mouse Pad	: Pikachu : 58.3 x 26.5 cm (L x W)
		Eevee : 62.9 x 28.4 cm (L x W)
Net Weight :		Snorlax : 56 x 20.8 cm (L x W)
	Keyboard	: 490g
	Mouse	: 59g
	Mouse Pad	: Pikachu : 156g
DPI		Eevee : 160g
		Snorlax : 146g
		: 1200
Wireless Frequency Bands		: 2.4 GHz

## Warranty Terms & Conditions

The product comes with a factory warranty of twelve (12) months from the date of purchase. Your product is in perfect condition. In the event where a replacement unit is needed, the owner must provide the original receipt of purchase in order to grant replacement, providing the defect falls under warranty terms. If your unit has been disassembled or repaired without the manufacturer's authorization, the warranty will be immediately voided. The owner is responsible for any fee and charges of delivering the unit back to the agent or manufacturer.

## Explanation Of Warning Symbols & Notes



This product is compliant with the CE directive.



This product is compliant with RoHS (Restriction of Hazardous Substances Directive 2002/95/EC).



This symbol indicates direct current.



Do not dispose of your product with other household waste. Please act according to local rules on the separate collection of electrical and electronic products and batteries. The correct disposal of those products helps prevent potentially negative consequences on the environment and human health.

The Coop Idea Ltd. Inspirations from New Zealand.  
Design in Hong Kong. Produced in China,

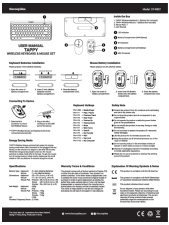


[www.thecoopidea.com](http://www.thecoopidea.com)



thecoopidea

## Documents / Resources



[thecoopidea CP-KB01 TAPPY Wireless Keyboard Set - Hello Kitty](#) [pdf] User Manual  
CP-KB01 TAPPY Wireless Keyboard Set - Hello Kitty, CP-KB01, TAPPY Wireless Keyboard Set  
- Hello Kitty, Wireless Keyboard Set - Hello Kitty, Keyboard Set - Hello Kitty, Hello Kitty