



theben 1610011 Analog Timer with Synchronous Motor Instruction Manual

[Home](#) » [theben](#) » theben 1610011 Analog Timer with Synchronous Motor Instruction Manual 

Contents

- 1 theben 1610011 Analog Timer with Synchronous Motor
- 2 Product Information
- 3 Product Usage Instructions
- 4 Installation
 - 4.1 General information
 - 4.2 Technical data
 - 4.3 Installation
- 5 Documents / Resources
 - 5.1 References

theben
theben 1610011 Analog Timer with Synchronous Motor



Product Information

Specifications

- Model: SYN 161 d
- Part Number: 1610011

Product Usage Instructions

Safety Precautions

Before using the product, please read and understand the following safety precautions:

- Ensure the power supply is disconnected before installation or maintenance.
- Do not touch any live parts to avoid electric shock.
- Avoid using the product in wet or damp conditions.
- Keep the product away from flammable materials to prevent fire hazards.

Installation

To install the product, follow these steps:

1. Consult a qualified electrician for installation to ensure proper electrical connections.
2. Disconnect the power supply before proceeding with the installation.
3. Mount the product securely on a suitable surface.
4. Connect the necessary electrical wires according to the provided wiring diagram.
5. Ensure all connections are tight and secure.
6. Once installed, double-check all connections before restoring power.

Operation

To operate the product, follow these instructions:

1. Ensure the power supply is connected and turned on.
2. Refer to the user manual for specific functions and settings.
3. Use the provided controls or interface to adjust the desired settings.
4. Observe any safety guidelines or restrictions mentioned in the user manual.
5. If any issues or malfunctions occur during operation, disconnect the power supply and consult a qualified technician.

Maintenance

To maintain the product and ensure its longevity, follow these guidelines:

- Regularly clean the product using a soft, dry cloth. Avoid using abrasive materials or solvents.
- Inspect the product for any signs of damage or wear. Replace any damaged parts immediately.
- Keep the product free from dust and debris by cleaning it regularly.
- Do not attempt to repair or modify the product yourself. Contact an authorized service center for assistance.

FAQ

Q: Can I install the product myself without consulting an electrician?

A: It is highly recommended to consult a qualified electrician for installation to ensure proper electrical connections and safety.

Q: What should I do if there is a power outage?

A: During a power outage, the product will not function. Once the power is restored, the product will resume normal operation.

Q: How often should I clean the product?

A: It is recommended to clean the product regularly using a soft, dry cloth to remove dust and debris. The frequency of cleaning depends on the environment in which the product is used.

WARNING

Danger of death through electric shock or fire!

- Installation should only be carried out by professional electrician!
- Disconnect the mains power supply prior to installation and/or disassembly!

General information

- Analogue time switch
- Daily programme

- 1 channel
- Shortest switching time 15 min

Technical data

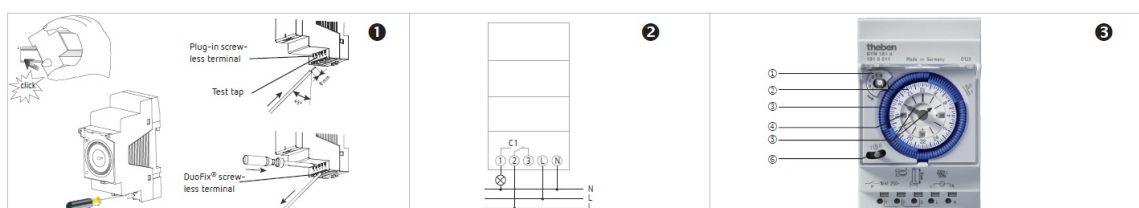
- **Operating voltage:** 230 V~, +10 %/-15 %
- **Frequency:** 50 Hz
- **Power consumption:** 1 VA
- **Rated impulse voltage:** 4 kV
- **Contact:** wo way switch
- **Opening width:** < 3 mm (μ)
- **Switching capacity:** 16 A, 250 V~, $\cos \phi = 1$
 - 4 A, 250 V~, $\cos \phi = 0,6$
- **Min. switching capacity:** 24 V / 100 mA AC
- **Incandescent lamp load:** 1100 W
- **Operating temperature:** -20 °C ... +55 °C
- **Protection class:** II in accordance with EN 60669-1 subject to designated installation
- **Protection rating:** IP 20 in accordance with EN 60529
- **Time accuracy:** synchronised with mains
- **Pollution degree:** 2
- **Type:** 1 BRTU

Designated Use

- The time switch can be used for lighting, ventilation, fountains, advertising hoardings etc.
- Only for use in closed, dry rooms
- Installation on DIN top hat rail (in accordance with DIN EN 60715)
- The switching of any external wire is permitted, switching of SELV is not permitted.

Installation

- Install on DIN top hair rails (in accordance with EN 60715)
- Disconnect power source
- Strip cable by 8 mm (max. 9 mm)
- Insert cable at 45° in the open terminal L 2 cables per terminal is possible
- Only with lexible wires: Press screwdriver downwards to open spring terminal



Disconnecting the cable

- Use the screwdriver to push the load line connection opener downwards

Connection

- Note connection diagram

Description

1. Switching pre-selection/ switching status indicator
 1. – 0 = off
 2. – 1 = on
2. Timing disc for time display (switching time)
3. Switching segments for programming SYN 161 d (1 = 15 min)
4. Morning/afternoon (AM/PM) time display (current time)
5. Hand for setting time (hours and minutes) can be adjusted clockwise; turn minute hand firmly to right
6. Three way switch: Permanent ON – AUTO – Permanent OFF

Do not turn at the switching disc! Set the times only with the clock hand

1. Set time

1. Set current time
2. e.g. 3:00 (morning)
3. e.g. 15:00 (afternoon)

2. Set switching times

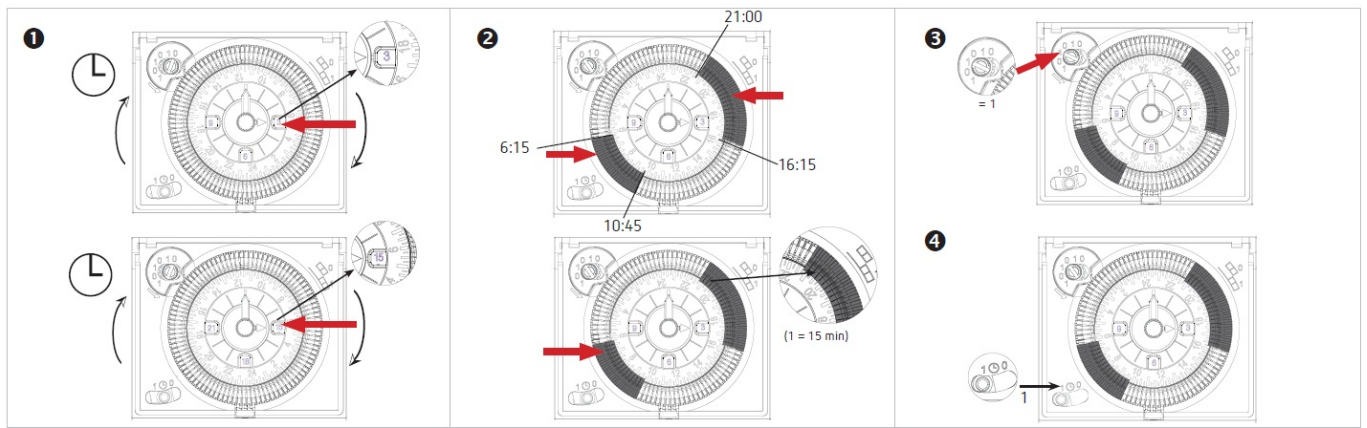
1. e.g. 6:15–10:45; 16:15–21:00 ON

3. Set manual operation / switching pre-selection

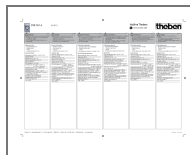
1. in advance 3:00 ON (= 1)
→ The time switch operates the set switching times, i.e. it returns to program.

4. Set 1 – – 0 permanent switching

1. → Program is not operated.
2. 1 = Permanent ON
3. 0 = Permanent OFF



Documents / Resources



[theben 1610011 Analog Timer with Synchronous Motor](#) [pdf] Instruction Manual
 1610011 Analog Timer with Synchronous Motor, 1610011, Analog Timer with Synchronous Motor, Synchronous Motor, Motor

References

- [t Theben AG - KNX, DALI, Zeitschaltuhren, Bewegungsmelder, Smart Home | Theben AG](#)
- [User Manual](#)