



The ToolShed TSDBS Electric Drill Bit Sharpener User Manual

[Home](#) » [The ToolShed](#) » The ToolShed TSDBS Electric Drill Bit Sharpener User Manual 

Contents

- [1 The ToolShed TSDBS Electric Drill Bit Sharpener](#)
- [2 WARRANTY](#)
- [3 SPECIFICATIONS](#)
- [4 IMPORTANT INFORMATION](#)
 - [4.1 GENERAL SAFETY GUIDELINES](#)
- [5 POWER TOOL AND MACHINERY USE AND CARE](#)
- [6 SERVICE](#)
- [7 OPERATION](#)
- [8 PARTS LIST](#)
- [9 Documents / Resources](#)
 - [9.1 References](#)
- [10 Related Posts](#)



The ToolShed TSDBS Electric Drill Bit Sharpener

**NOTE:**

This manual is only for your reference. Due to the continuous improvement of the ToolShed products, changes may be made at any time without obligation or notice.

WARRANTY

This product may be covered under the ToolShed warranty. For more information see our Terms & Conditions at www.thetoolshed.co.nz

SPECIFICATIONS

| | |
|-------------|-----------------|
| Voltage | 230v / 50Hz |
| Power | 80W |
| Speed | 4200RPM |
| Stone | 80 grit diamond |
| Drill Sizes | 3mm – 13mm |
| Min. Length | 85mm |

IMPORTANT INFORMATION**GENERAL SAFETY GUIDELINES**

WARNING READ ALL SAFETY WARNINGS AND ALL INSTRUCTIONS. Failure to follow instructions and warnings could lead to serious injury, electric shock, or fire. Save ALL warnings and instructions for future reference.

WORK AREA SAFETY

- Ensure that your work area is kept well-lit and clean. Lack of visibility and clutter greatly increase the risk of

accident.

- Keep bystanders and children clear when operating a power tool or machine. They can cause distraction or risk injury themselves.
- Ensure you are not operating the power tool or machinery in the presence of flammable gases, dust, liquids, or anything that creates an explosive atmosphere. Power tools and machinery can create sparks which can lead to ignition in these environments.

PERSONAL SAFETY

- Always wear personal protective equipment. Eye protection, ear protection, dust masks and other protective equipment will help to reduce the risk of personal injury.
- Dress appropriately. Do NOT wear jewellery or loose clothing that can get caught in moving parts. Keep hair, loose clothing, jewellery, and anything else that could be of risk away from moving parts or they could be caught.
- Always remain alert and do NOT operate the power tool or machinery under the influences of any substances (drugs, medication, alcohol). Losing focus could lead to injury while operating power tools and machinery.
- Always keep proper footing and balance. Overreaching can lead to slipping and falling which can result in injury.
- Ensure the power switch is in the off position before connecting any battery or power source to the power tool or machinery. This can lead to accidents as tools and machinery can fire suddenly when it is not expected and lead to accident.
- Use all provided dust collection and extraction attachments if included. This with the use of dust masks can help keep you safe from dust and keep your work site clear while working.
- Ensure loose parts such as a wrench or adjusting key are removed before starting the power tool or machinery. Failure to remove these can result in serious injury.

ELECTRICAL SAFETY

- Do NOT use the power tool or machinery in raining conditions or wet areas where the power tool or machinery could get wet. Water in the power tool or machinery can lead to electric shock.
- Only use the power tool or machinery when the plug correctly matches the power outlet. Modifying plugs greatly increases the risk of electric shock.
- Keep the power cord away from anything that could damage it such as sharp edges, moving parts or heat. A damaged power cord increases the risk of electric shock.
- Only operate outdoors with the use of an outdoor extension lead. Not all extension leads are suited to outdoor use and using one which is not can greatly increase the risk of electric shock.
- Avoid body contact with grounded or earthed surfaces. Surfaces such as radiators, ranges, pipes, and refrigerators can increase risk of electric shock due to your body being earthed or grounded.

POWER TOOL AND MACHINERY USE AND CARE

- Use the correct tool for the job. Forcing a tool to do a job it was not designed for increases the risk of accident or injury.
- Disconnect power tools and machinery from power or remove batteries before storing tools and machinery or

making any changes or adjustments to them. This reduces or removes the risk of power the tool or machinery accidentally firing which can help prevent injury or accident.

- Check the power tool for damage or any condition that could affect the way the tool or machine works. An unrepaired tool or machine can lead to accident and injury. Only have your tool or machine repaired with genuine parts from The ToolShed.
- Only use the power tool and machinery with genuine parts or accessories that are designed to be used with the power tool and machinery. Failure to do so could result in accident or injury or damage your tool or machinery.
- Store your tool or machinery out of reach of children and away from untrained personnel when not in use. Use by somebody untrained or a child could lead to accident or serious injury.

SERVICE

- Have your tools and machinery serviced at The ToolShed with ToolShed replacement parts. This will ensure that the safety of the power tool or machine is maintained.

ADDITIONAL SAFETY FOR ELECTRIC DRILL BIT SHARPENER

- Be careful of bits when sharpening. Bits will become hot. Be careful when handling and allow tips to cool for some time before storing.
- Sharpening head may become hot while using. Be careful when handling.

OPERATION

1. Loosely insert your drill bit into the positioning sleeve.



2. Hold back the toggle and position the sleeve into the depth adjustment cylinder. Push the drill bit in as far as it will go.



3. Release the toggle while rotating the drill bit so that it grips the flutes of the drill bit firmly.
4. Tighten the rear of the sleeve to hold the bit in position



5. Turn the sharpener on and place the sleeve into the sharpening cylinder.



6. Rotate the sleeve back and forth until there is minimal contact with the grinding wheel.



7. Remove the sleeve from the cylinder, rotate it 180°, put it back into the cylinder, and repeat the process.

FOR SPLIT POINT SHARPENING

1. Repeat the drill bit alignment process.
2. Place the sleeve into the cylinder on top of the drill bit sharpener.

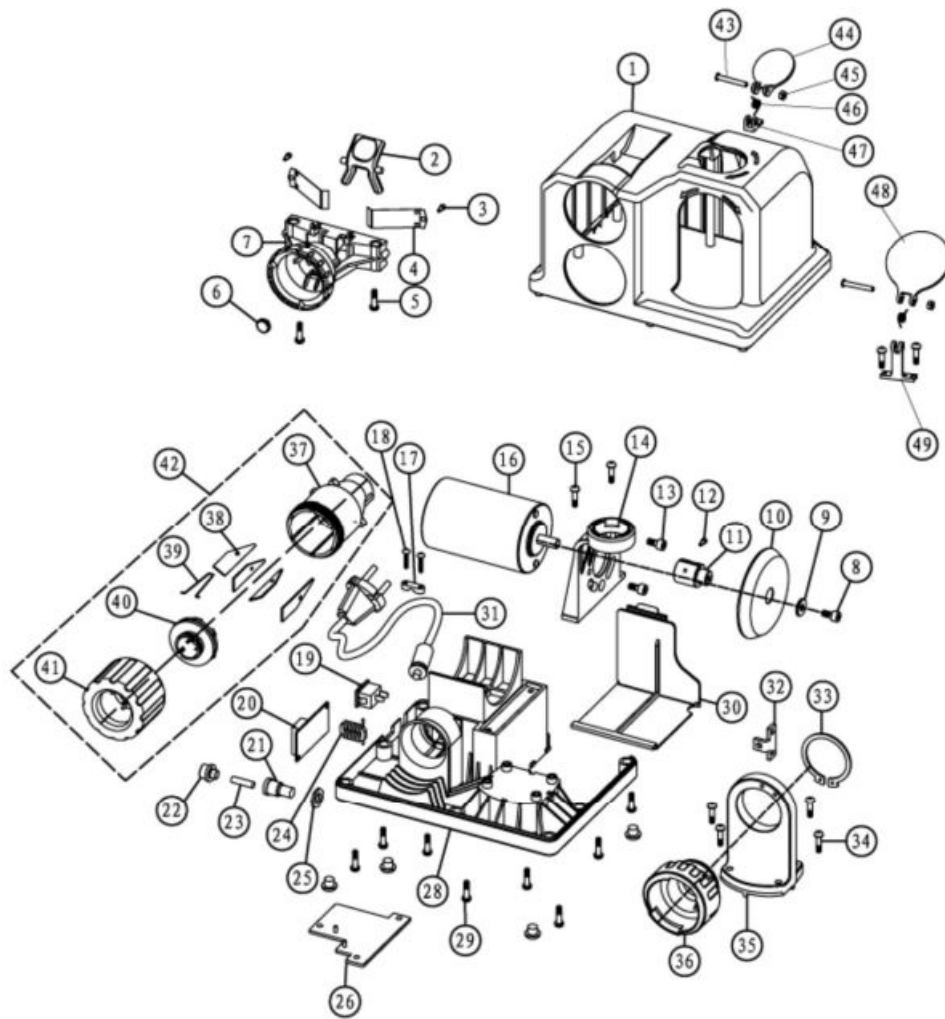


3. Rotate until minimum contact, take out and rotate 180°, place back in and repeat the process.

CLEANING

- Make sure to keep the surface of your unit free of grit, dirt, and grease. Use soapy water or non-toxic solvents. Do not use petroleum-based solvents.
- Keep air vents free of foreign matter at all times.

PARTS LIST



| Part No. | Description | Qty. | Part No. | Description | Qty. |
|----------|-------------|------|----------|-------------|------|
| 1 | Top Housing | 1 | 26 | Cover | 1 |
| 2 | Button | 1 | 27 | Cushion | 4 |
| 3 | Screw | 2 | 28 | Base | 1 |
| 4 | Spring Leaf | 2 | 29 | Screw | 11 |

| | | | | | |
|----|------------------|---|----|------------------------------|---|
| 5 | Screw | 2 | 30 | Dust Cap | 1 |
| 6 | Terminal | 1 | 31 | Cord | 1 |
| 7 | Fixing Shelf | 1 | 32 | Connector Board | 1 |
| 8 | Screw | 2 | 33 | Clamp Spring | 1 |
| 9 | Pad | 1 | 34 | Screw | 4 |
| 10 | Grinding Wheel | 1 | 35 | Bracket | 1 |
| 11 | Connector | 1 | 36 | Stand Socket | 1 |
| 12 | Screw | 1 | 37 | Positioner for Blade | 1 |
| 13 | Screw | 2 | 38 | Blade Holder | 6 |
| 14 | Positioner | 1 | 39 | Steel Spring | 6 |
| 15 | Screw | 5 | 40 | Transition Tube | 1 |
| 16 | Motor | 1 | 41 | Locknut | 1 |
| 17 | Wire Restraining | 1 | 42 | Hold Accessory (incl.#35-39) | |
| 18 | Screw | 2 | 43 | Screw | 2 |

| | | | | | |
|----|------------------|---|----|-----------------|---|
| 19 | Switch | 1 | 44 | Small Cover | 1 |
| 20 | PCB | 1 | 45 | Nut | 2 |
| 21 | Fuse Block | 1 | 46 | Pressure Spring | 2 |
| 22 | Nut for Fuse | 1 | 47 | Cover Support | 1 |
| 23 | Fuse | 1 | 48 | Big Cover | 1 |
| 24 | Inductance | 1 | 49 | Cover Support | 1 |
| 25 | Locknut for Fuse | 1 | 50 | | |
| | | | | | |
| | | | | | |
| | | | | | |
| | | | | | |
| | | | | | |
| | | | | | |



[The ToolShed TSDBS Electric Drill Bit Sharpener](#) [pdf] User Manual
TSDBS Electric Drill Bit Sharpener, TSDBS, Electric Drill Bit Sharpener, Drill Bit Sharpener, Bit Sharpener, Sharpener

References

- [The ToolShed - NZ | Power Tools | Hand Tools | Air Tools](#)