



## The Source Metro Aroma Diffuser Instruction Manual

[Home](#) » [The Source](#) » The Source Metro Aroma Diffuser Instruction Manual 

### The Source Metro Aroma Diffuser Instruction Manual



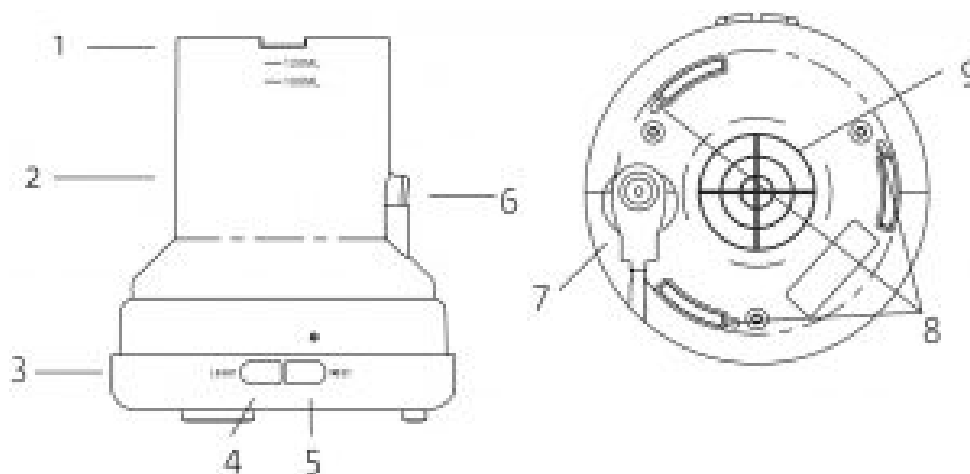
## Contents

- 1 INCLUDED
- 2 Product Overview
- 3 GETTING STARTED OPERATING INSTRUCTIONS
- 4 DIFFUSER SETTINGS
- 5 LIGHT SETTINGS
- 6 MOVING AND STORAGE INSTRUCTIONS
- 7 CARE AND MAINTENANCE
- 8 THE SOURCE WARRANTY
- 9 Documents / Resources
- 10 Related Posts

## INCLUDED

- Aroma diffuser
- One 10mL bottle of lavender essential oil
- AC adapter
- Instruction manual

## Product Overview

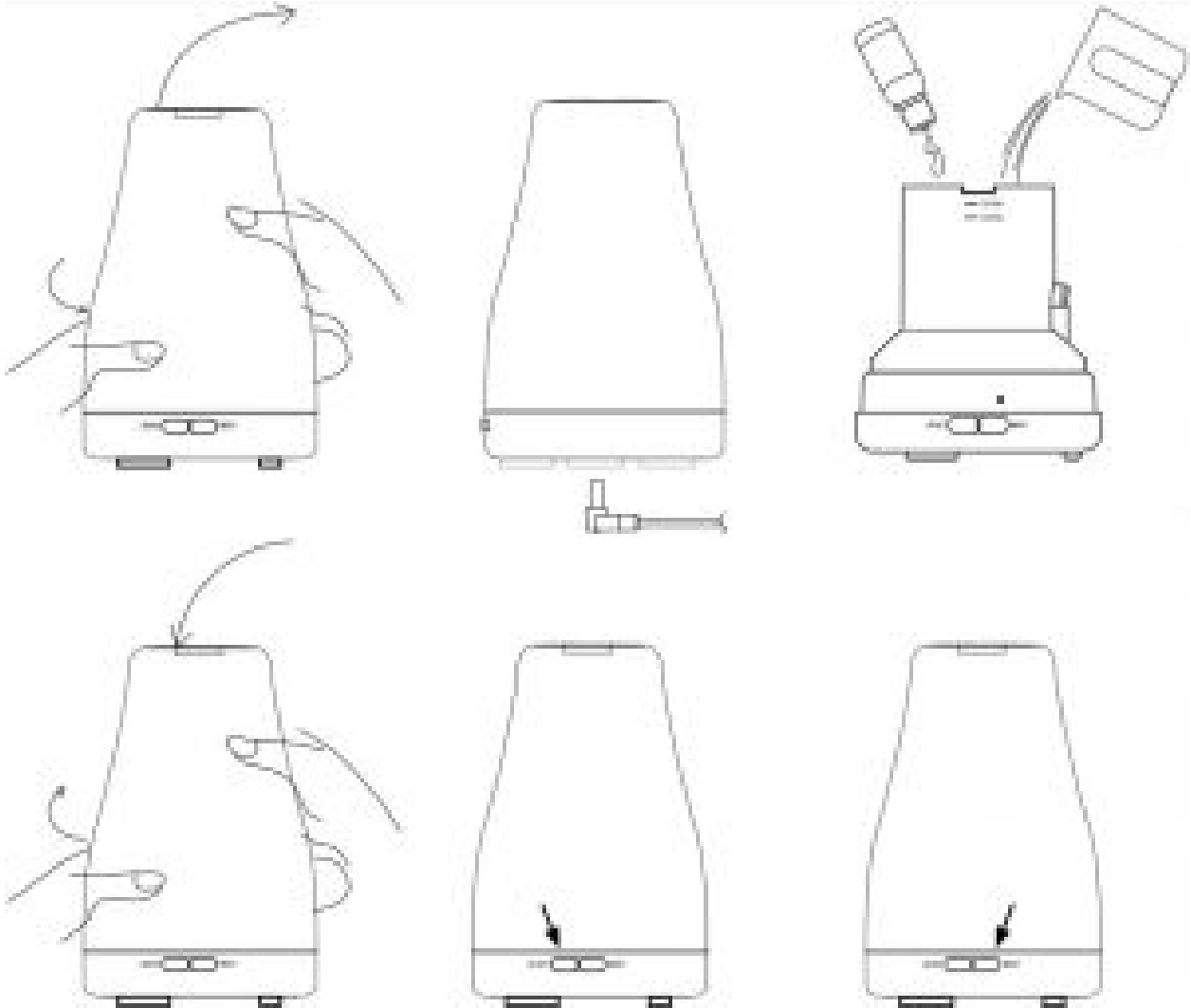


1. Drainage outlet
2. Water tank
3. Base
4. Light button
5. Mist button
6. Air outlet
7. DC socket
8. Outlet
9. Air intake

## GETTING STARTED OPERATING INSTRUCTIONS

- Firmly hold the base while twisting the reservoir lid to remove

- Plug in power plug into the bottom of the base
- Fill diffuser with water. The maximum capacity is 120m L , but we suggest to fill to best line — loom L Use water under 45°C (13°F), and avoid getting water into the air vent
- Add 2 to 3 drops of essential oil to full tank (i2omL) of water. For stronger fragrance add more drops of oil
- DO NOT add more fragrance oil than 2 drops to 2omL of water. Over dosage of fragrance can shorten the life of the diffuser
- DO NOT overfill diffuser unit
- Replace reservoir lid and canopy ensuring they are secure
- Plug AC adapter into wall outlet



## DIFFUSER SETTINGS

- Place diffuser on solid, level surface
- Press the mist button and the green indicator light will turn ON. The diffuser will be in interval mist mode (30 seconds on, 30 seconds off)
- Press the mist button again and the red indicator light will come on and diffuser will be in contentious mode
- The diffuser will turn OFF automatically when the reservoir is out of water
- Press the mist button for the third time to turn OFF mist

## LIGHT SETTINGS

- Press the light button **(4)** on the left for lights
- There are 8 light settings:
- Press once for colour-changing rainbow mode, where it will gradually switch between all colours
- Keep pressing the button to change to solid colours with a bright and soft light function

## **MOVING AND STORAGE INSTRUCTIONS**

- DO NOT move diffuser while in use (fluid in reservoir could spill and cause damage)
- Thoroughly clean diffuser before storing
- DO NOT carry the unit from the top, lid or decorative canopy

## **CLEANING**

Every 5-6 uses the diffuser should be cleaned as follows:

1. Unplug the diffuser, disconnect the power supply and remove cover.
2. Pour out water from the drain side of the tank.
3. Measure 1 tablespoon of citric acid into the tank and fill with just under 100mL of warm water (up to 70°C/158 °F).
4. Allow to sit for 5 minutes, then drain.
5. Wipe with a soft cloth avoiding the ultrasonic vibration plate area which can be cleaned using a cotton swab.

## **CARE AND MAINTENANCE**

- Clean when switching to a new fragrance
- DO NOT use metal or hard abrasive to scrape the ultra-high sonic disc
- Clean the sonic disc while it is wet. Allowing it to dry will cause any buildup to harden making it more difficult to remove
- If the sonic disc becomes excessively scaled, it may be necessary to clean the unit repeatedly to remove the buildup
- Wipe dry and allow to air dry fully
- DO NOT use vinegar or other corrosive cleaning agents
- Avoid water getting into the air vent
- Periodically wipe off the fan intake on the bottom of the unit with a dry, soft cloth.

## **Warning**

- DO NOT block bottom of the unit or use on, or near flammable surfaces, substances, heat sources or open flames
- DO NOT use on any surface that can be easily damaged, such as wood or surfaces that can be harmed by humidity or moisture
- DO NOT use if cord or plug is damaged. If diffuser malfunctions, is damaged or immersed in water discontinue use
- Use power supply and cord provided only
- For indoor use only

- DO NOT touch the sonic disc with bare fingers or scrape it with metal tools. This can cause damage and reduces mist output
- Always supervise diffuser use around children, disabled persons and pets
- DO NOT use diffuser in wet locations, anywhere it could get wet, or when user is wet. Water may damage diffuser and increase risk of electrical shock or death. Never rinse or immerse unit in water or any other liquid
- Always dilute fragrance with water. Never use only fragrance
- DO NOT leave powered on or unattended overnight
- Use with essential oils or water-based fragrances only. Acidic oils can affect the longevity of the diffuser. Follow fragrance dilution instructions.

## THE SOURCE WARRANTY

The Source warrants that this product will be free from defects in materials and workmanship for a period of 6 months from the date of purchase. Within this period, simply take the product and your proof of purchase to any The Source store or participating dealer and the product will be replaced (where available) without charge. Any product which has been subject to misuse or accidental damage is excluded from this warranty. This warranty is only applicable to a product purchased through The Source company-owned stores or participating dealers in Canada where the warranty is included with the product. While this warranty does not confer any legal rights other than those set out above, you may have additional statutory rights which will vary under the laws of the various countries, states, provinces and other governmental entities in which The Source operates. This warranty is subject to all statutory rights you may have in Canada.

### Imported by:

The Source, Barrie, Ontario, Canada, L4M 4W5

Manufactured in China


[www.thesource.ca](http://www.thesource.ca)

© 2021 The Source. All rights reserved.

- Please Recycle



## Documents / Resources

|   |  |
|---|--|
|  | <p><a href="#">The Source Metro Aroma Diffuser</a> [pdf] Instruction Manual<br/>The Source, Metro Aroma Diffuser</p> |
|---|--|