

The Replicant VA 22553 Key Making Kit Covert



The Replicant VA 22553 Key Making Kit Covert User Guide

[Home](#) » [The Replicant](#) » The Replicant VA 22553 Key Making Kit Covert User Guide 

Contents

- [1 The Replicant VA 22553 Key Making Kit Covert](#)
- [2 Product Specifications](#)
- [3 Product Usage Instructions](#)
- [4 HOW TO USE THE REPLICANT](#)
- [5 Documents / Resources](#)
 - [5.1 References](#)
- [6 Related Posts](#)

Making Kit

The Replicant VA 22553 Key Making Kit Covert



Product Specifications

- **Product Name:** The Replicant
- **Features:** Mold making, Air channel creation, Key making, Touch-up capabilities
- **Additional Info:** Lighter not included

Product Usage Instructions

Preparation

Before using The Replicant, ensure you have all necessary materials and tools ready for the process.

Making the Mold

Follow the instructions provided in the manual to create a mold using The Replicant.

Air Channel Creation

Utilize the tool to create an air channel as needed for your specific project.

Making the Key

Refer to the manual for detailed steps on creating a key using The Replicant. Remember that a lighter is not included.

Touch-Up:

At times, touch-ups may be required to ensure the success of the key. Use the finely serrated side of the utility spoon to file the key. This process may require some trial and error.

FAQ (Frequently Asked Questions)

- **Q: Is a lighter included with The Replicant?**

A: No, a lighter is not included with The Replicant. It needs to be sourced separately.

- **Q: How do I know if my key needs touch-up?**

A: Ridges, bumps, and ghosting on the key may indicate that touch-up is needed. Use the serrated edge of the utility spoon for touch-up.

HOW TO USE THE REPLICANT

PREP

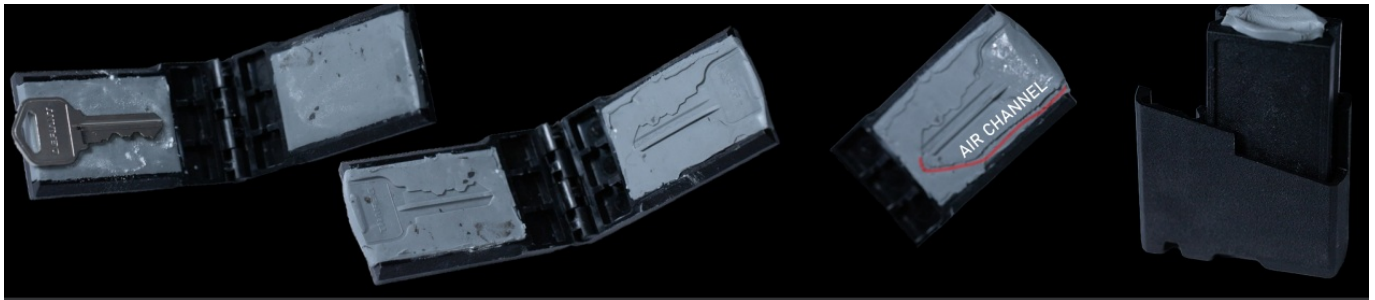
- **STEP 1.)** REMOVE BAND AND SET ASIDE LIGHTER (NOT INCLUDED), WOODS METAL, AND UTILITY SPOON
- **STEP 2.)** OPEN CASE AND REMOVE CASTING MOLD AND OPEN CLAY
- **STEP 3.)** TAKE ONE SECTION OF CLAY AND FILL ONE SIDE OF MOLD. USE THE ROLLER TO FLATTEN AND SMOOTH CLAY. REPEAT ON OTHER SIDE
- **STEP 4.)** ROLLER DOUBLES AS CONTAINER FOR RELEASE AGENT SUCH AS BABY POWDER (NOT INCLUDED). PUT A LIGHT COATING OF RELEASE AGENT ON CLAY TO PREVENT STICKING.
- **STEP 5.** PLACE THREE WOODS METAL CUBES IN MOLD SLOTS. CLOSE MOLD AND PLACE PARTS BACK IN CASE
- **STEP 6.)** USE BRANDED BAND TO KEEP SPOON AND LIGHTER (NOT INCLUDED) TO BOTTOM AND TOP OF CASE



MAKING THE MOLD

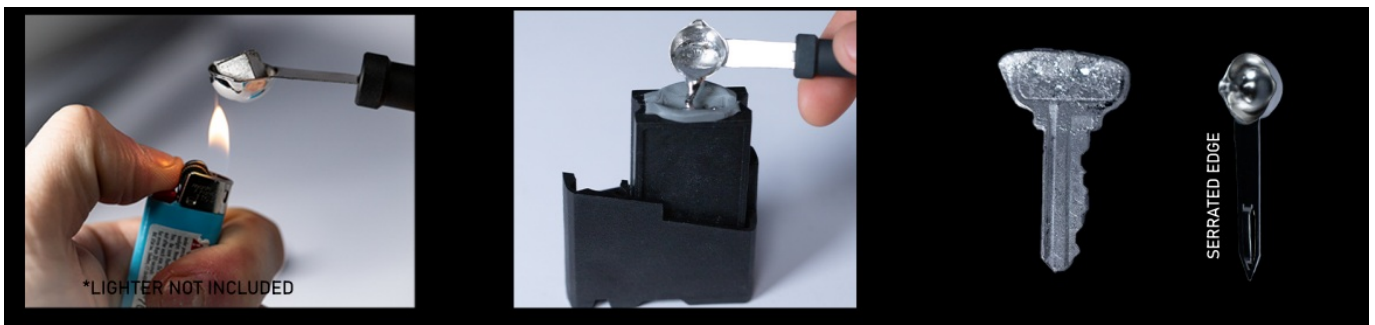
1. **STEP 1.)** REMOVE BAND AND SET ASIDE SPOON AND LIGHTER.
2. **STEP 2.)** OPEN PREPPED MOLD AND REMOVE A SINGLE CUBE OF WOODS METAL.
3. **STEP 3.)** PLACE KEY YOU ARE IMPRESSIONING LIGHTLY (DO NOT PRESS KEY DOWN) ON TOP OF CLAY. CLOSE THE MOLD OVER THE KEY. PLACE CLOSED MOLD BACK IN THE CASE. THIS HELPS ADD COMPRESSION.
4. **STEP 4.)** REMOVE MOLD AND OPEN SLOWLY. GENTLY REMOVE KEY FROM CLAY. INSPECT IMPRESSION.

5. **STEP 5.)** ADD AIR CHANNEL WITH THE POINTED END OF SPOON FROM TIP OF IMPRESSION TO THE TOP OF THE CLAY. PRESS DOWN SOME OF THE CLAY NEAR THE TOP TO FORM A SMALL FUNNEL INTO THE CLAY.
6. **STEP 6.)** CLOSE MOLD AND PLACE BACK IN HALF OF THE REPLICANT CASE WITH THE OPEN SIDE OF THE MOLD FACING UPWARDS.



MAKING THE KEY

1. **STEP 1.)** PLACE SPOON IN THE SLOT ON THE BOTTOM OF THE ROLLER. THE ROLLER BECOMES A HANDLE FOR THE SPOON.
2. **STEP 2.)** PLACE ONE CUBE OF WOODS METAL IN SPOON. USING LIGHTER (NOT INCLUDED) MELT CUBE ENTIRELY. HEAT FOR AN ADDITIONAL 10-15 SECONDS AFTER IT HAS MELTED ALL THE WAY. CAUTION: DO THIS IN A WELL VENTILATED AREA AND WASH HANDS AFTER HANDLING WOODS METAL.
3. **STEP 3.)** CAREFULLY, AND SLOWLY POOR MELTED WOODS METAL INTO TOP OF MOLD.
4. **STEP 4.)** WAIT A FEW MINUTES UNTIL METAL HAS COMPLETELY COOLED AND HARDENED.
5. **STEP 5.)** SLOWLY OPEN THE MOLD AND INSPECT KEY. THERE WILL BE SOME TOUCH UP REQUIRED. USE THE SERRATED SIDE OF THE SPOON TO FILE AWAY ANY GHOSTING OR EDGES THAT NEED TO BE CLEANED UP.
6. **STEP 6.)** TRY THE KEY AND MAKE ANY NECESSARY ADJUSTMENTS. TURN KEY GENTLY AS WOODS METAL IS STILL FRAGILE AND CAN BREAK OFF IN THE KEYWAY. DO NOT USE ON AN ACTIVELY USED LOCK.




TOUCH UP

OFTEN TIMES SOME TOUCH UP WILL BE NEEDED. RIDGES, BUMPS AND GHOSTING WILL EFFECT THE SUCCESS OF THE KEY. THE FINELY SERRATED SIDE OF THE UTILITY SPOON CAN BE USED TO FILE THE KEY. THIS TAKES SOME TRIAL AND ERROR.



Documents / Resources

	The Replicant VA 22553 Key Making Kit Covert [pdf] User Guide VA 22553 Key Making Kit Covert, VA 22553, Key Making Kit Covert, Making Kit Covert, Kit Cove rt
---	---

References

- [User Manual](#)

[Manuals+](#), [Privacy Policy](#)

This website is an independent publication and is neither affiliated with nor endorsed by any of the trademark owners. The "Bluetooth®" word mark and logos are registered trademarks owned by Bluetooth SIG, Inc. The "Wi-Fi®" word mark and logos are registered trademarks owned by the Wi-Fi Alliance. Any use of these marks on this website does not imply any affiliation with or endorsement.