



THE HOME DEPOT PeerBasics Corner Tool Storage Rack Instruction Manual

[Home](#) » [THE HOME DEPOT](#) » THE HOME DEPOT PeerBasics Corner Tool Storage Rack Instruction Manual 

Contents

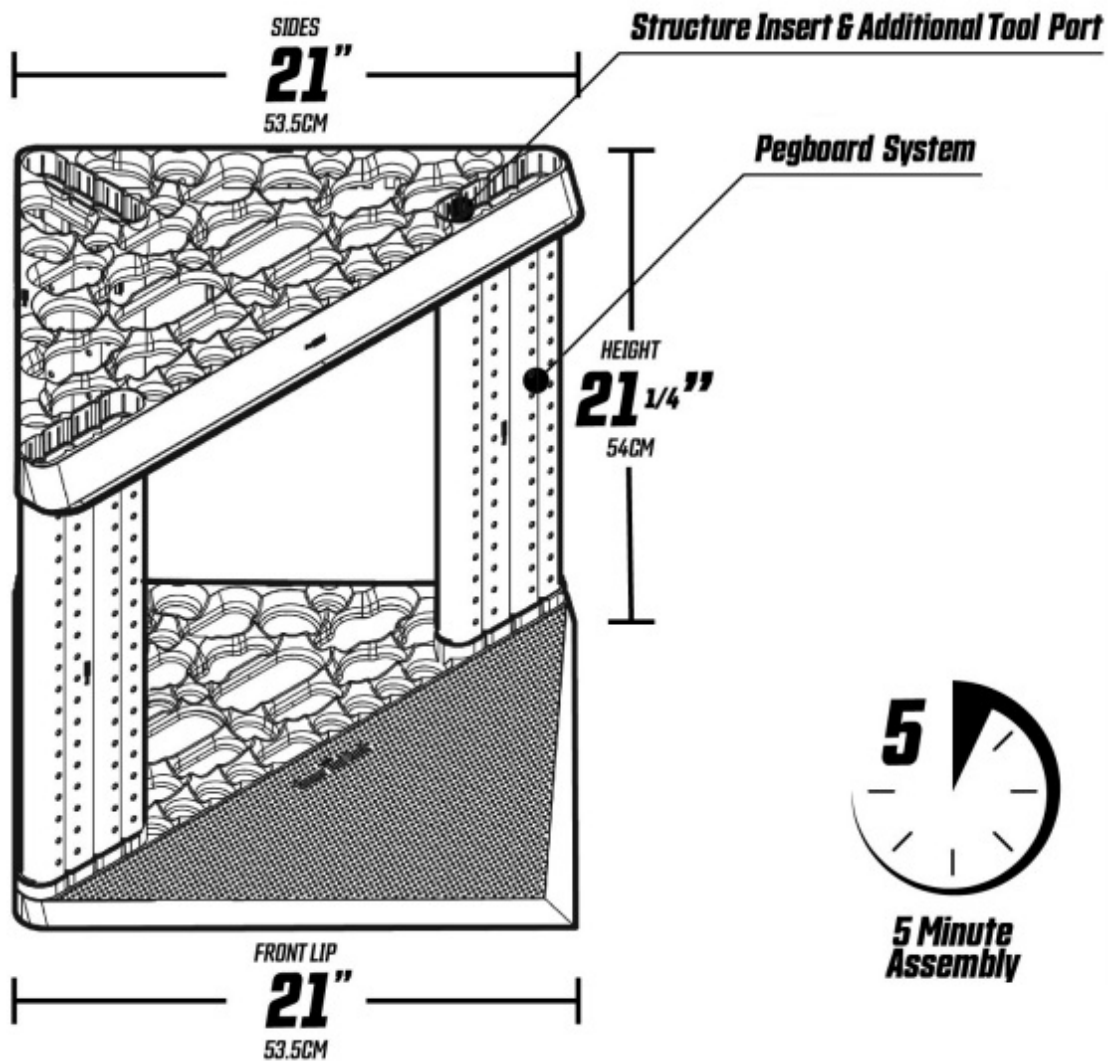
- [1 THE HOME DEPOT PeerBasics Corner Tool Storage Rack](#)
- [2 Features](#)
- [3 ASSEMBLY](#)
- [4 Interlocking svstem](#)
- [5 Wall Haunting](#)
- [6 Pegboard system](#)
- [7 Documents / Resources](#)



THE HOME DEPOT PeerBasics Corner Tool Storage Rack



Features



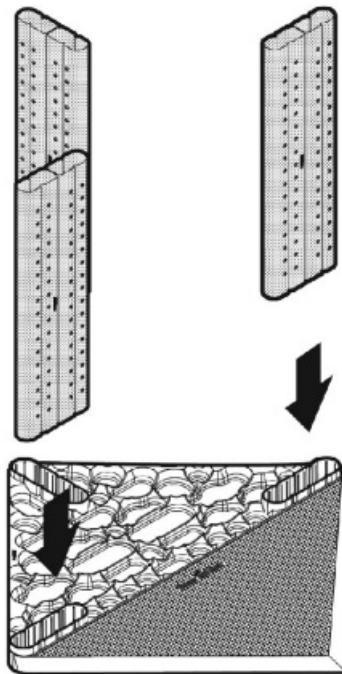
- STORES MORE THAN 40 TOOLS
- WALL MOUNT OR STANDALONE
- UNIQUE PEGBOARD DESIGN
- EASY ASSEMBLY
- MODULAR CONNECTORS

- DURABLE PLASTIC WON'T RUST DR ROT

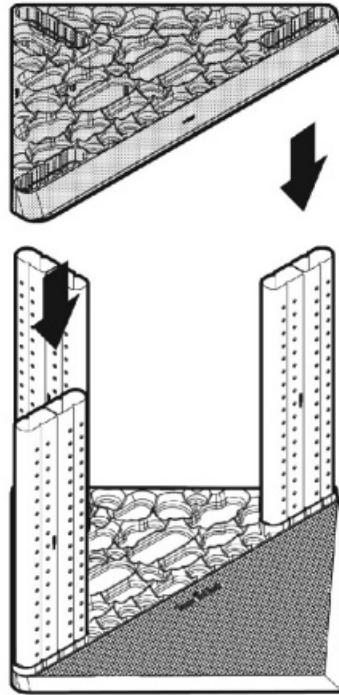
READ BEFORE INSTALLING

- Beware at overloading. While the corner rock can stand alone without being wall mounted it is highly recommended to secure the corner rock to a wall by screwing in the rock at its multiple hanging positions. Different tools weigh different amounts and overloading or not securing may cause the system to tip and fall.
- Beware at the balance at the corner rock. Placing too many tools on one side or too much weight on one side may cause the corner rock to tip. For best results screw in the corner rock to the wall to prevent tipping or falling.
- Always make sure screw installation points are along stud or are properly secured, using the wall plugs, to the wall it is being installed on. Consult an experienced handyman or contractor for best results.

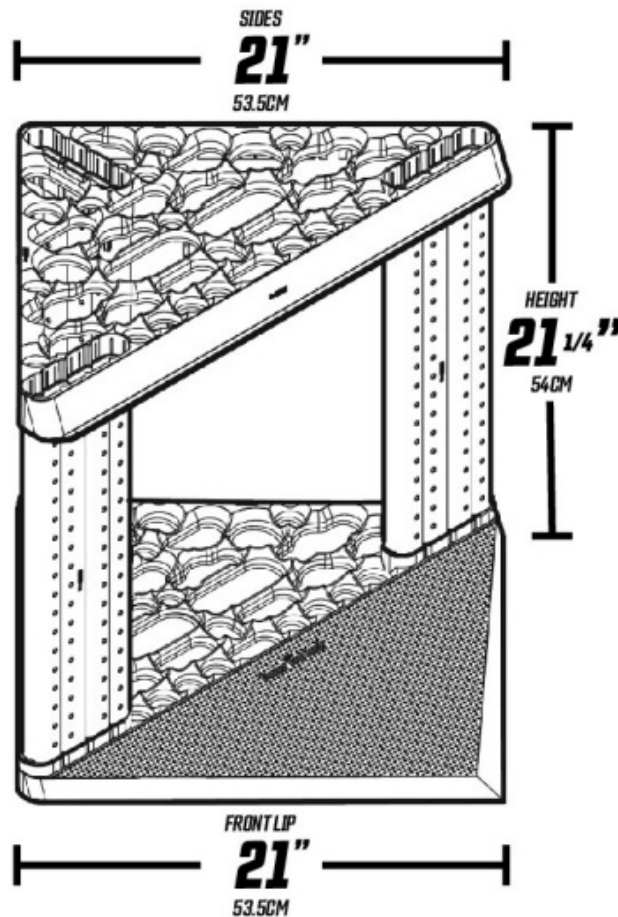
ASSEMBLY



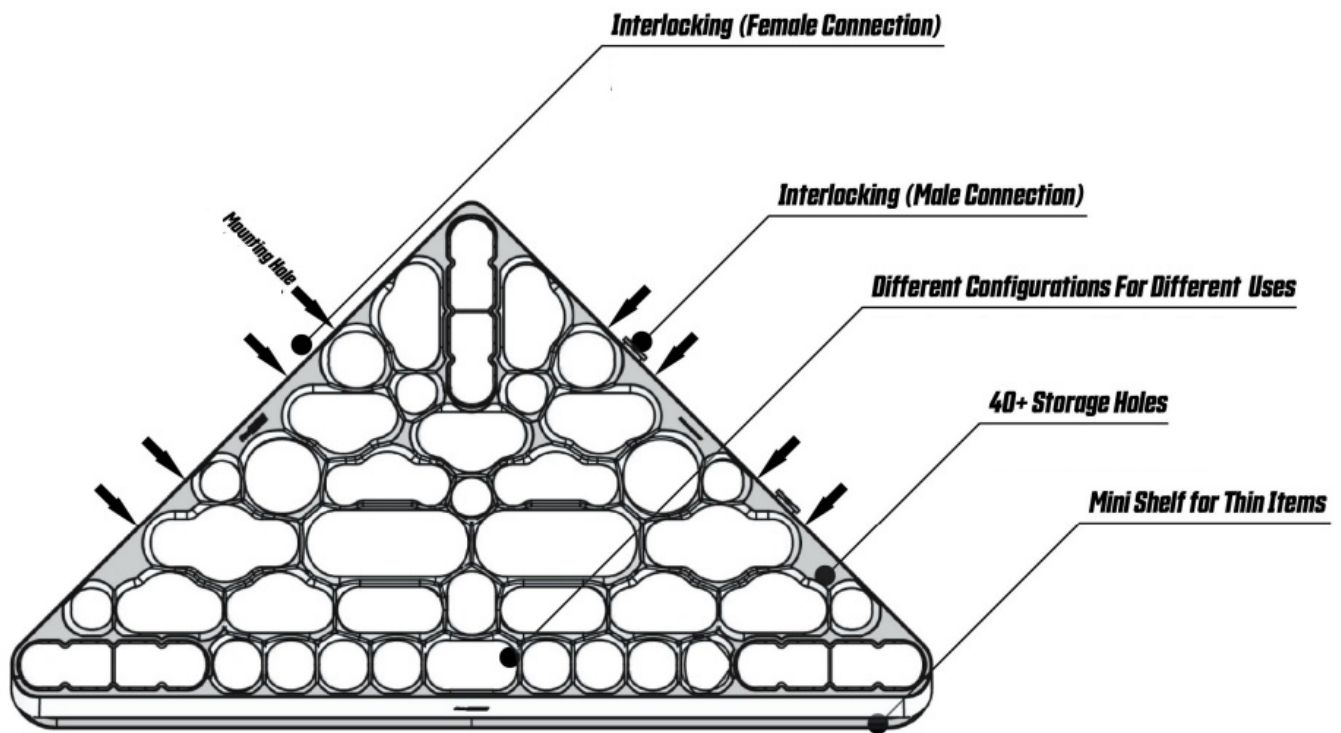
- Place base down on a flat surface.
- Insert the three (3) structures inside the hose. Make sure to match the structure profile to the hose profile port.
- No tools are necessary, but a rubber mallet can be used to make sure the structures are inserted fully.



- Place tap panel and structural pieces so they light/V fit inside the tap panels receiving holes.
- Slightly push each side into the structure until they're firmly inserted.

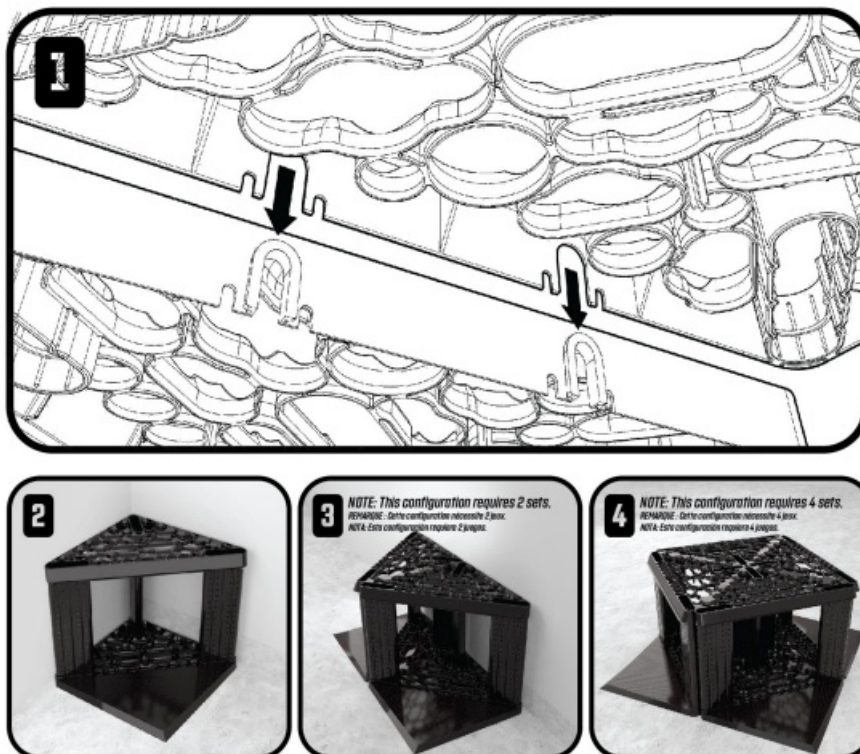


- The structure is now complete.
- If the set is flimsy or rocks from side-to-side check to make sure the structures are fully inserted into the base and top panel.
- It is highly recommended to use the included screws and wall plugs to tie the rack to the wall for added support.



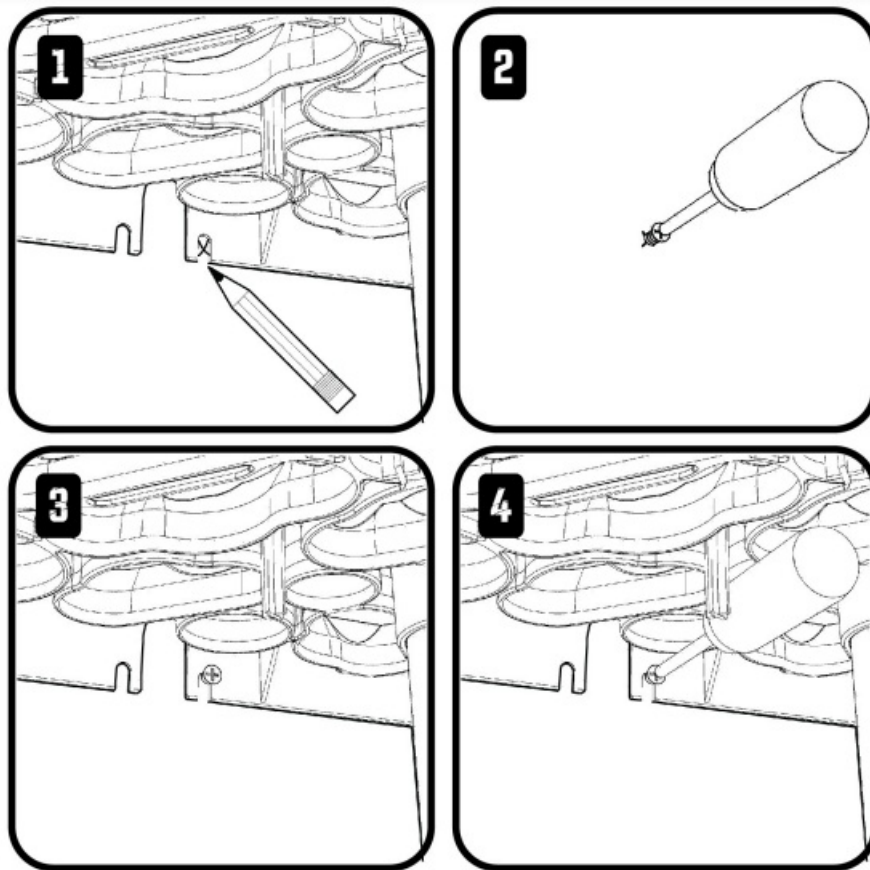
Interlocking system

NOTE: ONE SET PER BOX. 3 li 4 require two or mare sets.



1. Align the male li female connectors at 2 ar mare sets.
2. Single set. In Carner.
3. Two sets combined, along wall.
4. Faur sets combined, freestanding.

Wall Haunting



1. Set the rack into position.

Mark desired drill location in the openings on the underside of the top panel. There are a total of eight locations to mark. The more tie back screws installed the more secure the rack.

Wall plugs are also provided for different wall constructions.

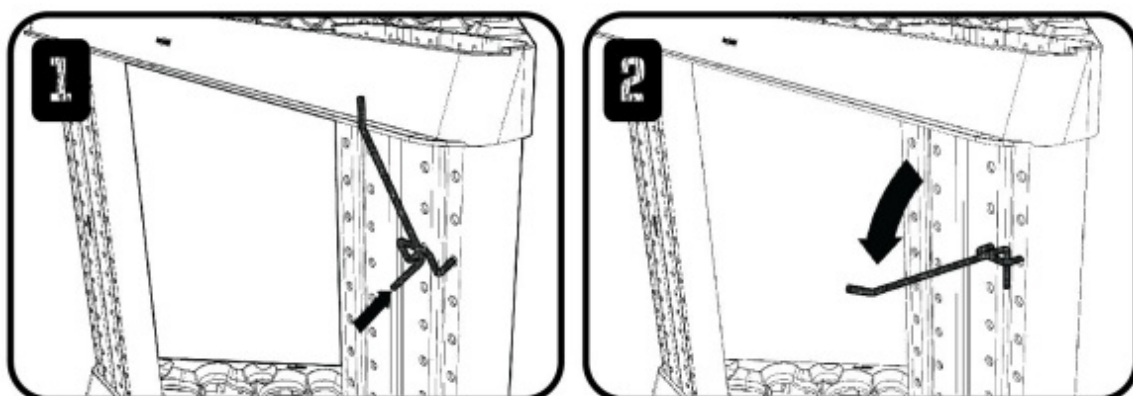
Move the rack away from the position.

2. Drill the screws into marked position. Leave gap of 1/8" between wall.

3. Lift the rack back into the desired location. Dropping it into place over the inserted screws.

4. Tighten the screws once the rack is in position. Be careful not to over tighten as it may crack the rack material.

Pegboard system




1. Insert two prong side into the pegboard at an angle, pictured.

2. Rotate the hook down until it rests in place.

DO NOT OVERLOAD HOOKS, OVERLOADING CAN CAUSE DEFORMATION OF THE PEGBOARD.

Documents / Resources

	<p>THE HOME DEPOT PeerBasics Corner Tool Storage Rack [pdf] Instruction Manual 08959, 860001408959, 0860001408959, 1007730014, PeerBasics Corner Tool Storage Rack, PeerBasics, PeerBasics Tool Storage Rack, Corner Tool Storage Rack, Tool Storage Rack, Storage Rack, Rack</p>
---	---